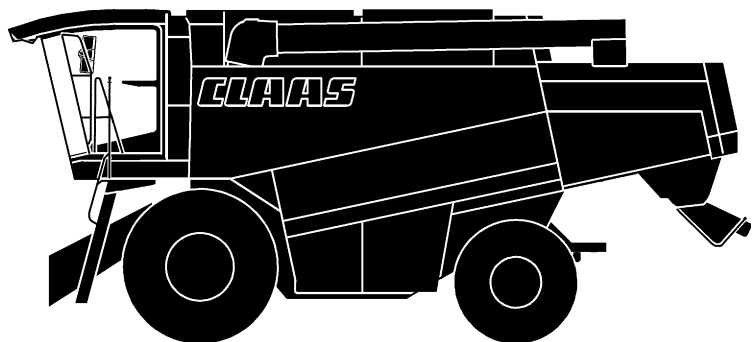


OPERATOR'S MANUAL

CLAAS



CLAAS
LEXION 460 / LEXION 450
LEXION 440 / LEXION 430
LEXION 420 / LEXION 415
LEXION 410 / LEXION 405
CEBIS

Contents

Introduction

1. Specifications

2. Prior to operation

3. Operation – cutterbar

4. Operation – CEBIS

5. Operation – basic machine

6. Maintenance – basic machine, cutterbar

7. Maintenance – engine

Road traffic regulations	6
Important instructions	7
Identification plate	9
Identification plate – basic machine	10
Combine serial number	10
Engine serial number	10
Cutterbar identification plate	11
Straw chopper identification plate	12
Serial number of cab	12
Cutterbar trailer identification plate	12
Maize picker head	12
Serial number of maize head stalk chopper	13
6-row maize picker front attachment, folding	13
Safety rules	14
Safety decals with pictorials	17
1. Specifications	
CLAAS LEXION 460 / 450 / 440	1. 3
CLAAS LEXION 430 / 420 / 415	1.12
CLAAS LEXION 410 / 405	1.22
FRONT ATTACHMENTS – weights and dimensions	1.30
Safety features	1.31
Machine overview	1.32
2. Prior to operation	
Perform the following steps prior to operation	2. 3
Operator's platform	2. 4
Cab	2. 5
Cab with fan	2. 6
Cab with fan and compressor-type air conditioning system	2. 6
Cab with fan and heater	2. 7
Reheat system	2. 8
Malfunction, cause and/or remedy	2. 9
Switch console	2.10
Monitor (Vehicle information display)	2.11
Monitor (Harvest display)	2.12
C-keys	2.14
Rotary switch D	2.14
Steering column	2.15
Multi-function switch	2.15
Vehicle information unit	2.16
Multi-function lever M	2.16
Central electrics	2.17
List of contents of central electrics compartment	2.18
Module (M3) CLAAS Autopilot	2.21
Swing grain tank unloading tube out and in	2.21
Switching grain tank unloading on and off	2.22
Switching threshing mechanism on and off	2.22
Adjusting the steering column	2.23
Steering wheel height adjustment	2.23
Operator's seat	2.24
Adjusting the operator's seat	2.24
Operator's seat "air suspension" (extra equipment) (up to serial no. ...)	2.25
Adjusting the air suspension	2.25
Operator's seat "air suspension" (extra equipment) (from serial no. ...)	2.26
Adjusting the air suspension	2.26
Ladders	2.27
Front ladder	2.27
Hinged ladder	2.27
Access and ladder extension	2.27
Position side lights in case of excess width	2.34
Side lights in case of excess width	2.35
Rear ladder	2.36
Other uses of the rear ladder	2.36
Opening and closing the cab roof (from serial no. ...)	2.37

Driving the combine	2.38	Standard crop divider	3. 9
Engine speed rotary switch	2.38	Special crop divider	3.11
Manoeuvring	2.38	Folding the crop divider tips	3.11
Automatic engine cut-off	2.39	Grain lifters	3.12
Starting the engine	2.39	Knife	3.12
Gear ranges	2.40	Removing the knife	3.13
Servo gearshift (option)	2.40	Installing the knife	3.13
Adjusting the binds of the ground speed control lever	2.40	Adjusting the height of the knife	3.13
Stopping	2.41	Adjusting the knife clips	3.14
Driving behaviour	2.41	Spare knife	3.14
Steering	2.41	Knife drive	3.14
Brakes	2.41	Cutterbar skids	3.15
Parking brake	2.42	Working in grass	3.15
Stopping the engine	2.43	Reel	3.15
CLAAS Autopilot (Maize header)	2.44	Reel safety locks	3.15
CLAAS Autopilot (Grain cutterbar)	2.45	Reel tines	3.16
Settings	2.45	Reel drive	3.16
Adjusting the directional stability of the combine	2.45	Fore and aft reel adjustment	3.17
Setting the laser sensor in the field	2.47	Variable-speed reel drive	3.18
Putting the CLAAS Autopilot into operation	2.49	Main table auger	3.18
Cutterbar hydraulic cylinders	2.51	Adjusting clearance to cutterbar bottom	3.18
Attaching in cutterbar hydraulic cylinders	2.51	Adjusting the stripper profiles on the cutterbar	3.21
Third cutterbar cylinder required / cutterbar spring lockouts	2.51	Locking cutterbars and maize picker heads (cutterbars without Auto-contour)	3.22
Adjustable rear axle	2.52	Replacing knife sections in the field	3.22
Rear wheel drive axle	2.54		
Adjusting rear wheel drive axle from transport to working position	2.54	4. Operation – CEBIS	
Wheel tread adjustment – Rear wheel drive axle	2.56	5. Operation – basic machine	
Rear axle wheel turn limit devices (adjustable rear axle)	2.58	Feeder house	5. 3
Rear axle 8 t	2.58	Cutterbar reverse drive	5. 4
Installing dual wheels	2.61	Cutterbar floatation springs	5. 4
Operating the front ladder with dual tyres installed	2.65	Checking the setting of the cutterbar floatation springs	5. 4
Opening and closing the big side panels and the rear door	2.66	Cutting height indicator	5. 5
Adjusting the side panel / rear door locks	2.67	Cutterbar spring pressure indicator	5. 5
Headlights, worklights and rear view mirrors	2.68	Blocking the cutterbar springs	5. 5
Towing	2.69	Adjusting drop rate of the front attachment	5. 6
Forwards	2.69	Cutterbar clutch	5. 6
Backwards	2.69	Engaging and disengaging the cutterbar	5. 7
Safety lock	2.70	Threshing mechanism	5. 7
Fire extinguisher	2.70	Stone trap	5. 7
Wheel chocks (up to serial no. ...)	2.70	Engaging and disengaging the threshing mechanism	5. 9
Positioning the wheel chocks	2.71	Threshing drum	5. 9
Windscreen washer system	2.71	Cleaning the threshing parts	5.10
Battery master switch	2.72	Basic concave setting	5.10
Crop inspection	2.72	Learning the limit stops	5.14
Additional weights	2.73	Threshing drum speed	5.14
Liquid filling of rear axle wheels	2.76	Threshing drum drives	5.15
Installing the rear axle ballast	2.76	Threshing drum two-step variable speed drive	5.15
Parts – rear axle ballast (adjustable and rigid axle)	2.77	Installing and removing preconconcave segments	5.16
Parts – rear axle ballast (rear wheel drive axle)	2.78	Threshing segment	5.16
Parts – rear axle wheel ballast	2.79	Removing threshing segment	5.17
Closing the grain tank openings	2.80	Installing threshing segment	5.18
3. Operation – cutterbar		Disawning	5.19
Cutterbar	3. 3	Unslugging the threshing drum	5.20
Tilting the cutterbar from transport position	3. 3	Deflector curtain	5.20
Mounting the cutterbar	3. 3	Straw walkers and cleaning	5.21
Machines equipped with CLAAS Auto-contour	3. 3	Straw walkers	5.21
Adjusting the hydraulic cylinder for transverse cutterbar control	3. 4	Intensive separation system	5.21
Machines without Auto-contour	3. 4	Cleaning the straw walkers	5.22
Connecting the universal drive shafts	3. 6	Warning signal	5.22
Fitting the stand	3. 7	Straw walker risers	5.23
Removing the cutterbar	3. 7	Sieve pan	5.24
Adjustments on the cutterbar	3. 9	Preparation floor	5.24
Crop divider	3. 9	Frogmouth sieves	5.25
		Mechanical sieve adjustment	5.25
		Electrical sieve adjustment	5.25
		Removing and installing the sieves (up to serial no. ...)	5.26

Tightening torques of axial mountings for the upper and lower sieves	5.29
Removing the sieves	5.29
Installing the sieves	5.31
Tightening torques of axial mountings for the upper and lower sieves	5.31
Basic sieve setting (electrical sieve adjustment – up to serial no. ...)	5.32
Basic sieve setting (electrical sieve adjustment – from serial no. ...)	5.32
Harvesting without lower sieves	5.33
Removing the lower positioning motor (from serial no. ...)	5.34
Cleaning fan	5.35
Electric fan speed adjustment	5.35
Wind-controlled cleaning step	5.36
Adjustment of primary wind duct LEXION 460 – 415	5.36
Windboard LEXION 460 – 415	5.36
Windboard LEXION 415 / 410 / 405	5.36
Fan shutters for combining grass seed and other special crops (extra equipment)	5.37
3-D cleaning system (powered sideways thrust on top sieve)	5.38
Returns	5.39
Combine performance monitor	5.40
Grain delivery	5.41
Augers and auger troughs	5.41
Elevators	5.42
Adjusting the tension on elevator chains	5.43
Grain tank	5.44
Grain tank extension 9300/8500 litres (electric)	5.44
Grain tank covers (8100/7800/7300 litres grain tank)	5.44
Unloading the grain tank	5.46
Grain tank unloading aid (extra equipment)	5.46
Grain tank walkway (up to serial no. ...)	5.47
Grain tank unloading tube	5.48
Swinging the unloading tube out and in	5.48
Inspection doors on the grain tank unloading tube	5.49
Shear bolt for grain tank unloading	5.50
Grain tank discharge – engaging and disengaging	5.50
Grain tank access	5.50
Automatic chain lubrication – grain tank unloading	5.51
Straw chopper	5.51
Before using the straw chopper for the first time	5.51
Adjusting the spreading width	5.52
Spreading unit height adjustment LEXION 460 – 415	5.52
Spreading unit height adjustment LEXION 410 / 405	5.52
Electric deflector adjustment	5.52
Adjusting the length of cut	5.53
Adjusting the cross blade	5.53
Putting the straw chopper into operation LEXION 460 – 415	5.53
Taking the straw chopper out of operation LEXION 460 – 415	5.54
Putting the straw chopper into operation LEXION 410 / 405	5.54
Taking the straw chopper out of operation LEXION 410 / 405	5.55
Chopper position for hitching the cutterbar trailer LEXION 460 – 415	5.55
Chopper position for hitching the cutterbar trailer LEXION 410 / 405	5.55
Reducing the straw chopper speed LEXION 460 – 415	5.56
Moving the V-belt (12) on the pulley	5.57
Reducing the straw chopper speed LEXION 410 / 405	5.58
Chaff spreader	5.59

Folding open the chaff spreader	5.60
Straw spreader	5.61
Retracting the coupling lug cylinders at the feeder house (machines with Auto-Contour)	5.62
Sieves	5.63
Suggested combine adjustments	5.65
Problem, cause and/or remedy	5.73

6. Maintenance – basic machine, cutterbar

Important maintenance instructions	6. 2
Maintenance schedule	6. 4
Lubricants chart	6. 6
Hydraulic system	6. 7
Checking the oil level	6. 7
Changing hydraulic oil	6. 7
Changing the hydraulic oilfilter on the hydrostatic pump	6. 8
Changing the hydraulic oil filter on the low-pressure hydraulic circuit (up to serial no. ...)	6. 8
Cleaning the screen filter	6. 9
Refilling the system after a hydraulic oil change	6. 9
Bleeding the reel cylinders	6.10
Bleeding the reel cylinders for the reel fore-and-aft adjustment	6.10
Bleeding the hydraulic cylinders for cutterbar lateral levelling (machines with Auto-contour)	6.10
Gearboxes	6.11
Transmission gearbox	6.11
Checking the oil level	6.11
Oil change	6.12
2-step final drives	6.12
1-step final drives	6.13
Final drives (planetary gear)	6.13
Knife drive casing	6.14
Threshing drum two-step variable speed drive	6.14
Oil change	6.14
Checking the oil level	6.15
Transfer gearbox (engine)	6.15
Foot brake and brake fluid	6.15
Parking brake	6.15
Gear shift control adjustment	6.16
Drives	6.16
Drive system diagram	6.17
Drive system diagram	6.18
Changing drive belts	6.19
Removing and installing the variable-speed drum belt	6.19
Removing the threshing drum power band drive belt	6.19
Installing the threshing drum power band drive belt	6.20
Removing the accelerator drive belt	6.20
Installing the accelerator drive belt	6.20
Removing the variable-speed fan belt	6.20
Installing the variable-speed fan belt	6.21
Removing the intermediate fan drive belt	6.21
Installing the intermediate fan drive belt	6.21
Removing the intermediate cutterbar drive belt	6.22
Installing the intermediate cutterbar drive belt	6.22
Removing the variable-speed cutterbar belts	6.22
Installing the variable-speed cutterbar belts	6.22
Removing the cutterbar drive belt (1/2)	6.23
Installing the cutterbar drive belt (1/2)	6.23
Removing the impeller drive belt	6.23
Installing the impeller drive belt	6.23
Cutterbar drive adjustment (Cutterbar drive without variable speed pulley)	6.24
Removing and installing V-belt (1)	6.24
Cutterbar drive adjustment (Cutterbar drive with variable speed pulley)	6.26
Removing and installing V-belt (2)	6.26

Impeller drive adjustment	6.28	Speed monitoring	6.58
Installing and tensioning V-belt (4)	6.29	Setting the magnetic pick-ups (sensors)	6.58
Cutterbar intermediate drive adjustment	6.30	Spreading unit	6.59
Removing and installing cutterbar intermediate		Installing and adjusting the toothed belt	6.59
drive belt (5)	6.30	Compressed air system (extra equipment)	6.61
Intermediate drive adjustment – main drive	6.32	Compressed air connections	6.61
Intermediate drive adjustment for grain tank		Draining the compressed air accumulator	6.61
unloading mechanism	6.33	Compressor	6.62
Straw chopper drive adjustment LEXION 460 – 415	6.34	Pressure controller	6.62
Relieving the tension on V-belt (10) at		Winter storage instructions for combines	6.63
spring-loaded cylinder (G) and removing the belt	6.35		
Installing V-belt (10) and tensioning the			
belts by means of spring guide tube (G)	6.35		
Straw chopper drive adjustment LEXION 460 – 415	6.36		
Relieving the tension on the drive belt (11) at			
spring-loaded cylinder (G) and removing the belt	6.36		
Relieving the tension on V-belt (12) and			
removing the belt	6.37		
Straw chopper drive adjustment LEXION 410 / 405	6.38		
Relieving the tension on the V-belt (10) at			
spring-loaded cylinder (G) and removing the belt	6.38		
Installing V-belt (10) and tensioning the belt at			
tension spring guide tube (G)	6.38		
Relieving the tension on the V-belt (12) at			
spring-loaded cylinder (F) and removing the belt	6.39		
Installing V-belt (12) and tensioning the belt at			
tension spring guide tube (G)	6.39		
Sieve pan and straw walker drive adjustment	6.40		
Sieve pan drive adjustment	6.41		
Straw walker drive adjustment	6.42		
Grain tank discharge drive adjustment			
(up to serial no. ...)	6.43		
Grain tank discharge drive adjustment			
(from serial no. ...)	6.44		
Relieving the tension on the drive chain			
tensioner and removing the chain	6.44		
Installing and tensioning drive chain (17)	6.45		
Intensive separation system drive adjustment	6.46		
Removing the drive belts (18 and 19)	6.46		
Installing and tensioning the drive belts (18 and 19)	6.47		
Fan intermediate drive adjustment	6.47		
Relieving the tension on the V-belt (20)			
and removing the belt	6.47		
Relieving the tension on the intermediate fan			
drive belt (20)	6.47		
Installing and tensioning V-belt (20)	6.48		
Drum drive adjustment	6.49		
Releasing the tension on threshing drum drive			
belt (23)	6.49		
Tensioning the threshing drum drive belt (23)	6.50		
Releasing the tension on accelerator			
drive belt (24)	6.50		
Tensioning the accelerator drive belt (24)	6.51		
Hydraulic pump – chaff spreader	6.51		
Fire extinguisher	6.51		
Cab	6.51		
Cleaning the filters	6.51		
Cleaning the units located in the cab roof	6.52		
Compressor-type air-conditioning system	6.52		
Tensioning the compressor drive belt	6.52		
Cleaning the condenser	6.53		
Checking the refrigerant level	6.53		
Replacing the filter receiver-drier	6.54		
Required refrigerant charge – refrigerant R 134 a	6.54		
Compressor oil	6.55		
Maintenance work before the harvest	6.55		
Straw chopper	6.56		
Swinging down the straw guide plate	6.56		
Replacing the free-swinging knives	6.56		
Replacing the stationary knives	6.58		
		7. Maintenance – engine	
		Important maintenance instructions	7. 3
		Maintenance schedule	7. 4
		Lubricants chart	7. 5
		Mercedes OM 401 LA	7. 6
		Perkins 1306 – 9T	7. 6
		Mercedes OM 366 LA	7. 7
		Perkins 1006.6 TA	7. 7
		Perkins 1006.6 TW	7. 8
		Perkins 1306–9 HEUI	7. 8
		Walkway (up to serial no. ...)	7. 9
		Raising the walkway	7. 9
		Fuel system	7.10
		Fuel tank	7.10
		Fuel tap	7.10
		Fuel pre-filter	7.11
		Water separator/fuel pre-filter	7.11
		Fuel filter	7.12
		Bleeding the fuel system	7.13
		Checking engine oil level	7.14
		Changing engine oil	7.14
		Oil filter	7.15
		Pouring in engine oil	7.16
		V-Belts	7.17
		Adjusting fan drive	7.17
		Releasing the tension on the fan drive belt (27) at	
		the spring-loaded cylinder and removing the belt	7.17
		Installing and tensioning the fan drive belt	7.18
		Tensioning alternator V-belt	7.19
		Cooling system	7.20
		Coolant	7.20
		Water drain plugs on engine block	7.20
		Water drain plug on engine block	7.21
		Radiator	7.22
		Coolant filter (Perkins 1306 – 9T /	
		Perkins 1306–9 HEUI)	7.22
		Filling cooling system with coolant	7.22
		Excessive pressure	7.23
		Corrosion protection	7.23
		Warning sign	7.23
		Coolant temperature	7.23
		Stopping the engine when overheated	7.24
		Warning signal	7.24
		Radiator rotary screen	7.25
		Cleaning the radiator	7.26
		Adjusting the radiator rotary screen drive	7.27
		Adjusting the radiator rotary screen drive	7.29
		Dry-type air cleaner	7.30
		Warning device	7.30
		Cleaning the air cleaner intake screen	7.30
		Cleaning dry-type air cleaner with dust	
		extractor unit	7.30
		Cleaning air cleaner	7.31
		Dry-type air cleaner with safety filter cartridge	7.32
		Battery	7.33
		Battery isolating switch	7.33
		Alternator	7.34
		Engine problems, cause and/or remedy	7.35
		Engine winter storage	7.36

Road traffic regulations

NOTE: Road traffic regulations may vary between countries. In case of discrepancies between the instructions provided by the manufacturer and the traffic regulations of the relevant countries, the traffic regulations of the countries concerned apply.

In addition to his driving licence, the operator must always carry the copy of the vehicle type approval registration issued by the Kraftfahrt-Bundesamt (the Federal Motor Vehicle Executive).

A warning triangle and, on machines over 4 t permissible total weight, at least one wheel chock must always be carried on the combine.

When driving on public roads with the vehicle, comply with the requirements stated under letter C in the copy of the vehicle type approval registration (§ 18 Section 5 StVZO) issued by the Kraftfahrt-Bundesamt (the Federal Motor Vehicle Executive).

On machines with exceptional width (width over the tyres), a vehicle type approval registration for individual vehicles (single expert opinion) and a special approval in accordance with § 70, Section 1, clauses 1 and 2 of the StVZO must be carried instead of the machine's General Operating Permit. Furthermore, all the requirements stated in the vehicle type approval registration for individual vehicles and in the special approval must be observed. The issue of a special approval differs from country to country. The excess width must be marked in accordance with the regulations for the marking of road vehicles with excess width (two marker boards at the front and back, protective bar, two amber flashing warning beacons).

If any part(s) of the combine is/are subsequently modified whose condition is prescribed or the operation of which (after being modified) could represent a hazard to other road users, then the vehicle type approval registration shall no longer be valid and application must be made for a new vehicle type approval registration. In this case the machine must be presented to the motor vehicle safety inspection authority responsible (TÜV) in order to obtain an expert opinion certificate (§19 Section 2 StVZO).

If you are in any doubt as to whether this situation applies in your case, please contact us as manufacturers.

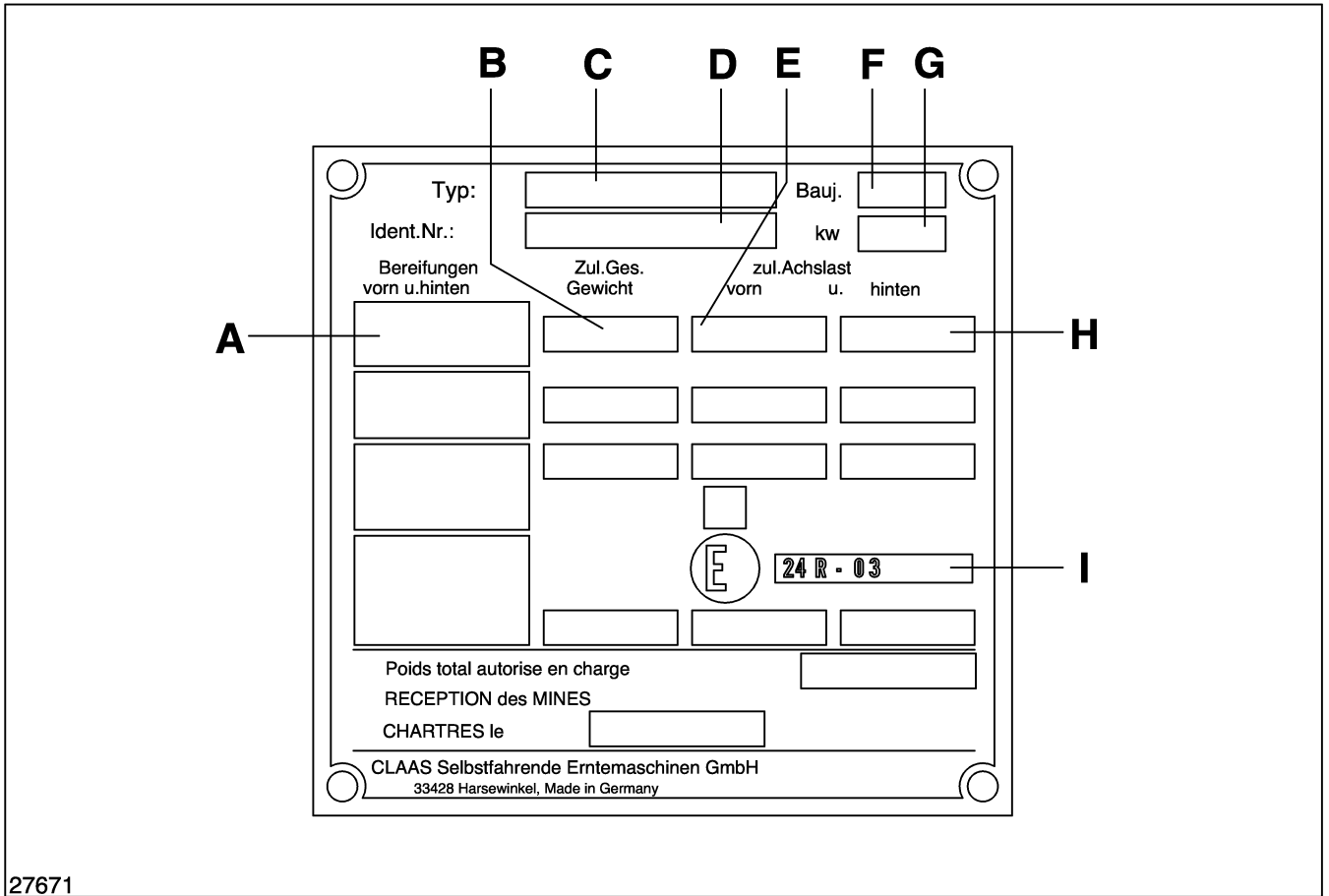
If a transport vehicle for front end attachments is towed behind the combine then the cable for the lighting system must be connected and the good condition of the lighting system assured.

If the combine is equipped with a maize header or folding cutterbar, the regulations and requirements of the machine's General Operating Permit must be observed, in particular the requirements concerning ballast weights and tyres.

Registration

As a self-propelled working machine with a maximum speed of less than 20 km/h, the combine is not subject to the normal registration regulations and is not required to bear a registration plate. The machine must, however, be clearly and indelibly marked on the left-hand side with the Christian name and surname of the owner and his address.

The towing of trailers in the trailer hitch when driving on public roads is **not** permitted.

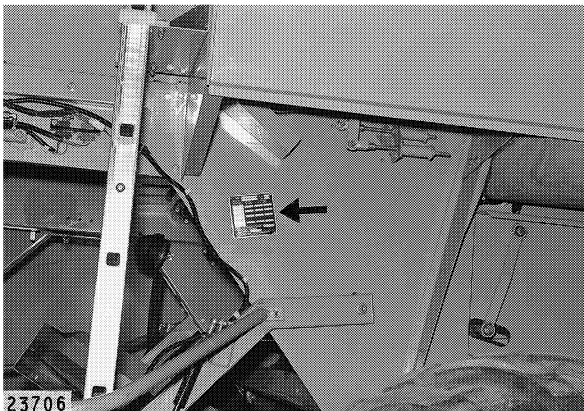


27671

Identification plate

- A = Tyres
- B = Authorized gross weight
- C = Type
- D = Identification No. (serial number of machine)
- E = Authorized front axle load
- F = Year of manufacture
- G = Rated capacity of engine (kW)
- H = Authorized rear axle load
- I = ECE-engine designation

When ordering spare parts and requesting technical information always specify the serial number of the machine. When ordering spare parts and requesting technical information concerning the engine also quote the engine serial number. When ordering spare parts and requesting technical information concerning mounted implements, the cutterbar and the maize picker head, also specify the respective serial numbers. This is necessary to prevent incorrect spare parts deliveries.



Identification plate – basic machine

The identification plate is located above the rear axle on the right hand side of the machine.

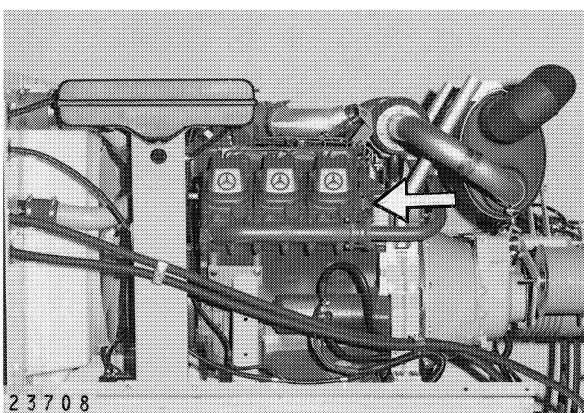
(Fig. 1)



Combine serial number

The combine serial number is stamped on the engine frame underneath the operator's platform on the right hand side of the machine.

(Fig. 2)



Engine serial number

MERCEDES OM 401 LA

The identification plate with the engine serial number is attached to the front end of the engine, on the left side next to the cylinder head.

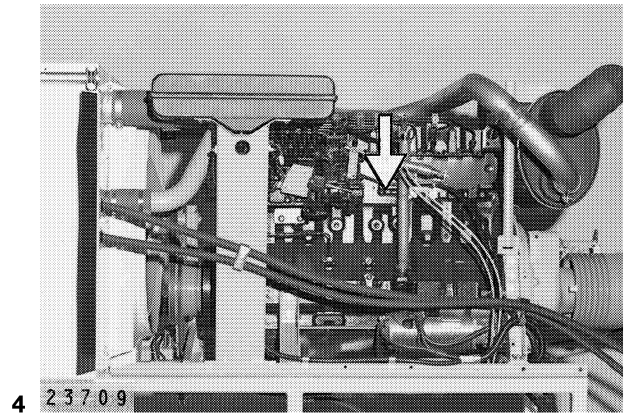
(Fig. 3)

Engine serial number

PERKINS – 1306.9TA

The engine serial number is stamped on the engine block next to the injection pump.

(Fig. 4)

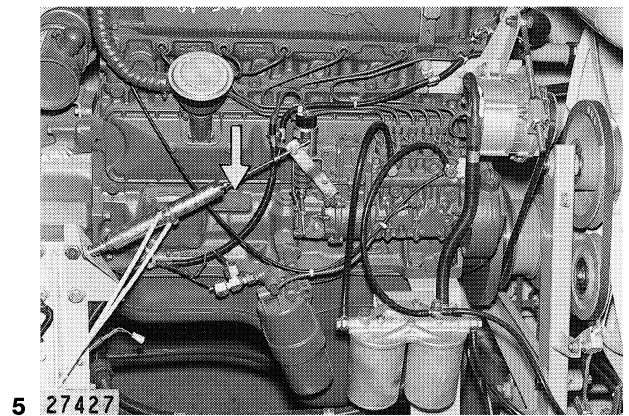


Engine serial number

MERCEDES OM 366 LA

The identification plate showing the engine serial number is attached next to the injection pump.

(Fig. 5)

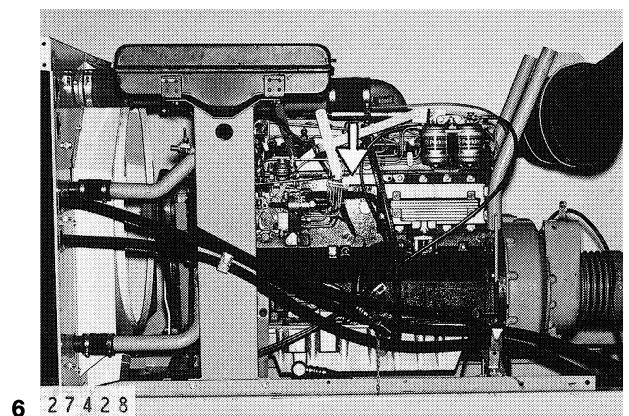


Engine serial number

PERKINS – 1006.6 TA / 1006.6 TW

The identification plate showing the engine serial number is attached to the engine block between injection pump and oil cooler.

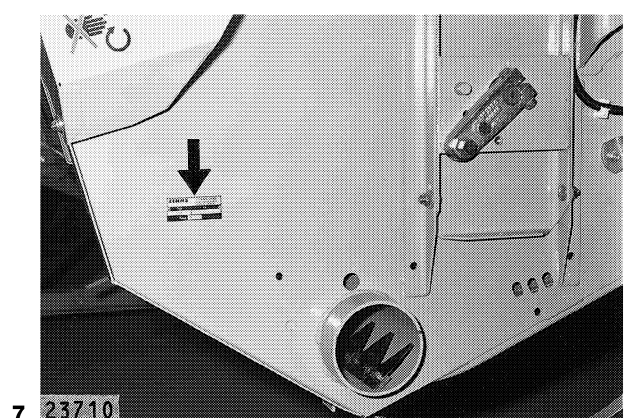
(Fig. 6)

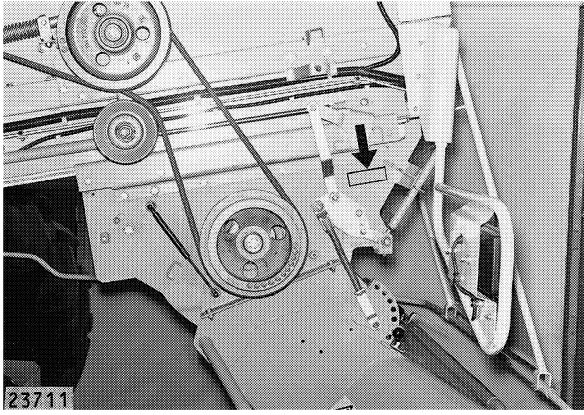


Cutterbar identification plate

The identification plate is attached to the right hand side panel.

(Fig. 7)



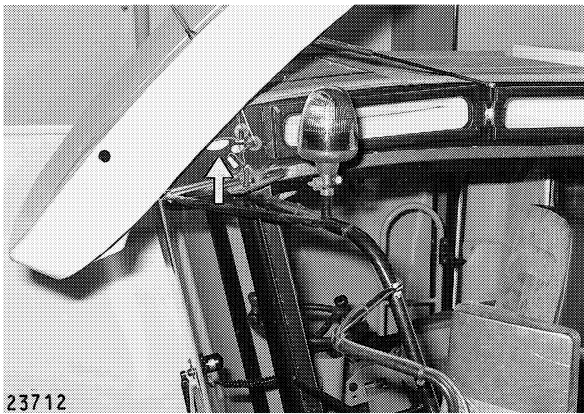


8

Identification plate – straw chopper

The chopper serial number is stamped on the left hand side panel.

(Fig. 8)

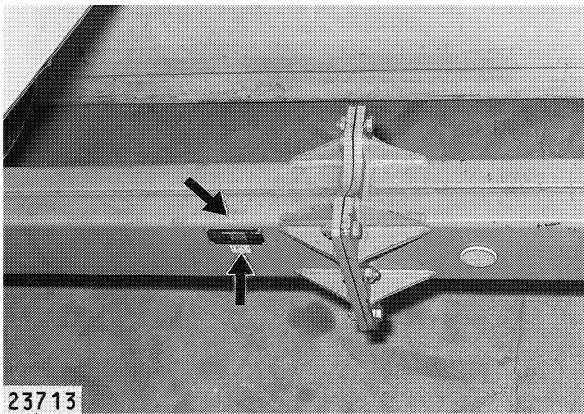


9

Serial number of cab

The serial number is attached to the side frame on the left hand side of the cab.

(Fig. 9)



10

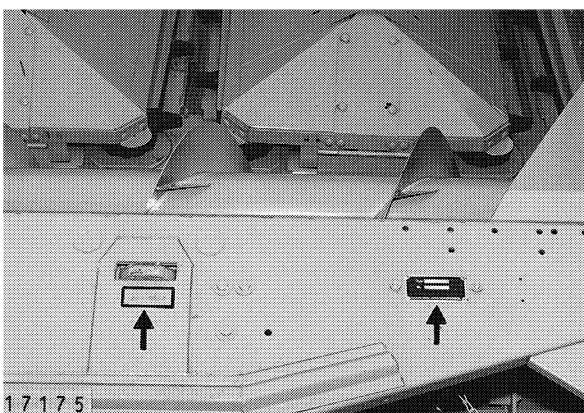
Identification plate – cutterbar trailer

The identification plate is attached to the front end of the trailer drawbar.

Serial number:

The serial number is stamped on the front end of the trailer drawbar.

(Fig. 10)



11

Maize picker head

The identification plate with the number of the picker head is attached to the right hand end of the picker cross plate.

Serial number:

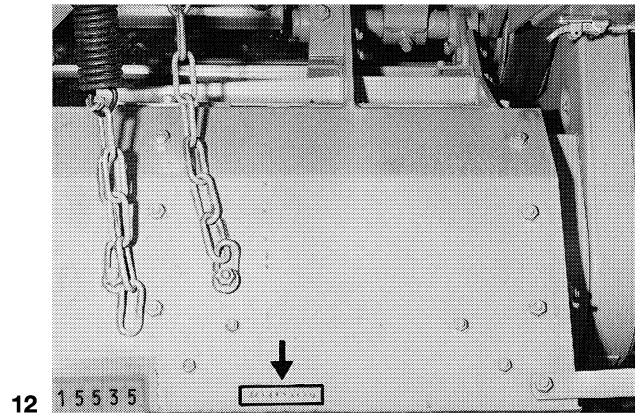
The serial number of the maize picker head is stamped behind the coupling hole on the maize picker's cross plate.

(Fig. 11)

Serial number of maize head stalk chopper

The serial number of the stalk chopper is stamped on the chopper back plate towards the right.

(Fig. 12)



Thank you so much for reading.
Please click the “Buy Now!”
button below to download the
complete manual.



After you pay.

You can download the most
perfect and complete manual in
the world immediately.

Our support email:

ebooklibonline@outlook.com