

# **CLAAS**



**LEXION 560 / 550 Montana**  
from serial no. 58000029

**LEXION 530 / 520 Montana**  
from serial no. 58200052

## **Operator's Manual**

***SERVICE & PARTS***

## Contents

### 1 Introduction

<b>1.1 General Information</b> .....	<b>20</b>
1.1.1 How to use this manual .....	20
1.1.2 Validity of instructions .....	22

### 2 General Information

<b>2.1 Road traffic</b> .....	<b>23</b>
<b>2.2 Important notice</b> .....	<b>25</b>
<b>2.3 Identification plate / Serial number</b> .....	<b>26</b>
2.3.1 Identification plate / Serial number .....	26
2.3.2 Identification plate .....	27
2.3.3 Machine serial number .....	27
2.3.4 Engine serial number .....	27
2.3.5 Straw chopper identification plate .....	29
2.3.6 Cab serial number .....	29
<b>2.4 Attachment parts / machine body</b> .....	<b>30</b>
2.4.1 Access to the workplace and maintenance areas .....	30

### 3 Safety Rules

<b>3.1 Safety rules</b> .....	<b>32</b>
3.1.1 General information .....	32
3.1.2 Identification of warning and danger signs .....	32
3.1.3 Intended use .....	33
3.1.4 Reasonable foreseeable misuse .....	34
3.1.5 General safety and accident prevention regulations .....	34
3.1.6 Transporting passengers, instructor, operating personnel .....	35
3.1.7 Driving operations .....	35
3.1.8 Automotive operation of combine harvester .....	36
3.1.9 Leaving the combine harvester .....	36
3.1.10 Front attachments (cutterbar etc.) and other components .....	36
3.1.11 Air conditioner .....	37
3.1.12 Maintenance .....	37
3.1.13 Basic rule .....	37
3.1.14 Accumulators .....	37
3.1.15 Levelling mechanism .....	38
3.1.16 Decommissioning and disposal .....	38
3.1.17 Cylinder safety lock .....	39
3.1.18 Fire extinguisher .....	40
3.1.19 Battery isolating switch .....	41
3.1.20 Wheel chocks .....	41
3.1.21 Jack up the machine .....	42
3.1.22 Loading and tying down the machine .....	42
3.1.23 Hydraulic system .....	43
3.1.24 Danger of injury due to escaping hydraulic liquid .....	44
<b>3.2 Safety decals with pictorials</b> .....	<b>45</b>
3.2.1 General instructions for warning signs .....	45
3.2.2 Safety decals .....	46

## 4 Specifications

<b>4.1 CLAAS LEXION 560 / 550 Montana</b>	<b>69</b>
4.1.1 Cab / Operator's platform	69
4.1.2 Cutterbar	69
4.1.3 Threshing mechanism	69
4.1.4 Separation	71
4.1.5 Cleaning (Standard cleaning system)	71
4.1.6 Grain delivery	71
4.1.7 Engine	72
4.1.8 Chassis	73
4.1.9 Tyres and tyre pressures	74
4.1.10 Torque settings of wheel bolts	75
4.1.11 Track width	76
4.1.12 Transport position / Working position	77
4.1.13 Weights	80
4.1.14 Safety features	80
<b>4.2 CLAAS LEXION 530 / 520 Montana</b>	<b>81</b>
4.2.1 Cab / Operator's platform	81
4.2.2 Cutterbar	81
4.2.3 Threshing mechanism	81
4.2.4 Separation	82
4.2.5 Cleaning (Standard cleaning system)	82
4.2.6 Grain delivery	82
4.2.7 Engine	83
4.2.8 Chassis	84
4.2.9 Tyres and tyre pressures	85
4.2.10 Torque settings of wheel bolts	86
4.2.11 Track width	87
4.2.12 Transport position / Working position	88
4.2.13 Weights	91
4.2.14 Safety features	91

## 5 Prior to operation

<b>5.1 General Information</b>	<b>92</b>
5.1.1 Initial operation check list	92
5.1.2 Loading and tying down the machine	93
<b>5.2 Cab</b>	<b>95</b>
5.2.1 Cab with automatic air conditioner	95
5.2.2 Automatic air conditioner	97
5.2.3 Putting the automatic air conditioner into operation	98
5.2.4 Setting the cab temperature	99
5.2.5 Manually setting the evaporator blower speed	99
5.2.6 Activating ECON operating mode	100
5.2.7 Deactivating ECON operating mode	100
5.2.8 REHEAT operation (Dehumidify cab windows)	101
5.2.9 Displaying the outside temperature	102
5.2.10 Changing the temperature display to °Fahrenheit	102

5.2.11	Floor heating	102
5.2.12	Display of malfunction - Error in thermometer F0 (cab, blue)	103
5.2.13	Display of malfunction - Error in thermometer F1 (exhaust, yellow)	103
5.2.14	Display of malfunction - Error in thermometer F2 (outside, red)	103
5.2.15	Cab with air conditioner (Standard version)	104
5.2.16	Putting the air conditioning system into operation	106
5.2.17	Heater	107
5.2.18	Floor heating	107
5.2.19	REHEAT operation (Dehumidify cab windows)	108
5.2.20	Problem, possible cause or remedy – air conditioner system	109
5.2.21	Cooling box	111
5.2.22	Cooling unit (option)	111
5.2.23	Cooling bag (option)	111
5.2.24	Ice bucket (option)	112
5.2.25	Windscreen washer	112
5.2.26	Crop inspection	112
5.2.27	Opening and closing the cab roof	113
5.2.28	Cab emergency exit	113
5.2.29	Operator's platform overview	114
5.2.30	Control console	116
5.2.31	Screen (vehicle information display)	119
5.2.32	Screen (harvest display)	121
5.2.33	Keys C / Rotary switch D	123
5.2.34	Integrated Montana control system	124
5.2.35	Integrated Montana control in the switch console	125
5.2.36	Checking Montana functions	127
5.2.37	Manually checking Montana functions	127
5.2.38	Activating the integrated Montana control	128
5.2.39	Fully lowering the machine prior to road travel	129
5.2.40	Parking the machine	129
5.2.41	Switching the front attachment automatic system on / off	129
5.2.42	Manual axle control	130
5.2.43	Moving the machine to neutral position	130
5.2.44	Manual front attachment control	131
5.2.45	Correcting / saving the front attachment cutting angle and the front attachment lateral levelling (Montana) in automatic mode	131
5.2.46	Ignition switch	132
5.2.47	Multifunction switch	133
5.2.48	Vehicle information unit	134
5.2.49	Multifunction handle	135
5.2.50	Steering column adjustment	136
5.2.51	Steering wheel height adjustment	137
5.2.52	Central terminal compartment	137
5.2.53	Contents – Central terminal compartment (up to serial no. ...)	139
5.2.54	Fuses (up to serial no. ...)	140
5.2.55	Relays (up to serial no. ...)	142
5.2.56	Contents – Central terminal compartment (from serial no. ...)	145

5.2.57	Fuses (from serial no. ...)	146
5.2.58	Relays (from serial no. ...)	148
5.2.59	Operator's seat	151
5.2.60	Operator's seat, mechanical	151
5.2.61	Air-suspended driver's seat	153
<b>5.3</b>	<b>Lighting and socket outlets</b>	<b>156</b>
5.3.1	Headlights, working lights, mirrors	156
5.3.2	Sidefinder (option)	162
5.3.3	Pathfinder lighting	162
5.3.4	Side position lights in case of excess width	163
5.3.5	Socket outlet 12 V	165
5.3.6	CDS 5000 diagnosis connection socket outlet	167
<b>5.4</b>	<b>Access ladder</b>	<b>168</b>
5.4.1	Access and ladder extension	168
5.4.2	Pre-assembling the front ladder (from serial no. ...)	170
5.4.3	Installing the front ladder	171
5.4.4	Folding the ladder steps	177
5.4.5	Rotating the front ladder	177
5.4.6	Rear ladder	180
<b>5.5</b>	<b>Side panels</b>	<b>182</b>
5.5.1	Opening and closing the side panels and the tailgate	182
5.5.2	Opening the tailgate	183
5.5.3	Adjusting the gripping height of the side panels	184
5.5.4	Adjusting the side panel lock	185
5.5.5	Tool cabinet	185
<b>5.6</b>	<b>Mud guards / Side panels / Hitch block / Transport trailer</b>	<b>187</b>
5.6.1	Installing the mudguards	187
5.6.2	Fitting the hitch block	188
5.6.3	Converting the transport trailer to suit the machine	189
<b>5.7</b>	<b>Rear axles (Standard cleaning system)</b>	<b>190</b>
5.7.1	Rear axle overview	190
5.7.2	Rear drive axle 000 694 642 3	190
5.7.3	Rear axle 000 769 640 4	191
5.7.4	Converting the rear drive axle 000 694 642 3 from transport to working position	191
5.7.5	Rear drive axle 000 694 642 3 - Adjusting the track width	193
5.7.6	Converting the rear axle 000 769 640 4 from transport to working position	195
5.7.7	Rear axle 000 769 640 4 – Adjusting the track width	196
<b>5.8</b>	<b>Additional weights of rear axle</b>	<b>198</b>
5.8.1	Additional weights on rear axle LEXION 560 / 550 Montana Standard cleaning system	198
5.8.2	Additional weights on rear axle LEXION 530 / 520 Montana Standard cleaning system	198
5.8.3	Liquid filling of rear axle tyres	199
5.8.4	Installing the rear axle weight	199
5.8.5	Shipping package – rear axle weight (Rear drive axle)	200
5.8.6	Installing the rear axle weight	201
5.8.7	Shipping package – rear axle weight (adjustable and rigid rear axle)	202
<b>5.9</b>	<b>Cutterbar hydraulic cylinders</b>	<b>203</b>
5.9.1	Cutterbar hydraulic cylinder with springs	203
5.9.2	Number of cutterbar cylinders (LEXION 560 / 550 Montana)	203

5.9.3	Number of cutterbar cylinders (LEXION 530 / 520 Montana)	204
5.9.4	Installing the cutterbar floatation springs hydraulic cylinder	204
<b>5.10</b>	<b>Grain tank</b>	<b>206</b>
5.10.1	Closing the grain tank drain holes	206
5.10.2	Open the grain tank cover completely by hand	207
<b>5.11</b>	<b>Driving the combine with mechanical control</b>	<b>208</b>
5.11.1	Checking indicator lights	208
5.11.2	Driving machine	208
5.11.3	Ground speed control lever variants	208
5.11.4	Engine speed rotary switch	209
5.11.5	Medium engine idle speed	210
5.11.6	Starting the engine	211
5.11.7	Forward travel / reverse travel	212
5.11.8	Gear selection	212
5.11.9	Setting the ground speed control lever to move easily	213
5.11.10	Setting the ground speed control lever to move easily	214
5.11.11	Hydrostatic ground drive	214
5.11.12	Stopping	215
5.11.13	Machine driving characteristics	215
5.11.14	Handling with cutterbar trailer	215
5.11.15	Steering	215
5.11.16	Coupling / decoupling brake pedals of the foot brake	216
5.11.17	Applying / releasing the parking brake	216
5.11.18	Releasing the parking brake mechanically	218
5.11.19	Checking the wheel chocks / brake shoes	218
5.11.20	Manoeuvring the machine	219
5.11.21	Stopping the engine	219
5.11.22	Parking the machine	220
5.11.23	Engaging/disengaging the CLAAS 4-Trac system	220
5.11.24	Towing the machine	220
5.11.25	Gear shift mechanism – emergency operation	221
5.11.26	Differential lock	221
<b>5.12</b>	<b>CLAAS Autopilot (Maize picker)</b>	<b>223</b>
5.12.1	Putting the CLAAS Autopilot into operation	223
<b>5.13</b>	<b>CLAAS Autopilot (Grain cutterbar)</b>	<b>225</b>
5.13.1	Adjusting the directional stability of the combine harvester	225
5.13.2	Setting the laser sensor in the field	227
5.13.3	Rough adjustment	228
5.13.4	Fine adjustment	228
5.13.5	Laser sensor (crop edge has moved out of visible range)	229
5.13.6	Adjusting the right laser sensor (accessory)	230
5.13.7	Putting the CLAAS Autopilot into operation	231
5.13.8	Use in rape with left side cutter	232
<b>5.14</b>	<b>Information about hitching / unhitching trailers</b>	<b>233</b>
5.14.1	General information	233
5.14.2	General safety instructions	233
5.14.3	Hitching the trailer	234
5.14.4	Unhitching the trailer	235

## 6 Installing and removing the cutterbar

<b>6.1 Installing the cutterbar</b>	<b>237</b>
6.1.1 Tilting the cutterbar from transport position	237
6.1.2 Adjusting the cutterbar cross levelling hydraulic cylinder (up to serial no. ...)	238
6.1.3 Adjusting the cutterbar cross levelling hydraulic cylinder (from serial no. ...)	239
6.1.4 Attaching the front attachment	239
6.1.5 Locking cutterbars and maize pickers (Cutterbars without Auto Contour)	241
6.1.6 Connecting the universal drive shaft	242
6.1.7 Mounting the stands	243
<b>6.2 Removing the cutterbar</b>	<b>244</b>
6.2.1 Removing the universal coupling	244
6.2.2 Removing the universal drive shaft	245
6.2.3 Opening the cutterbar locking	245
6.2.4 Laying down the cutterbar on the ground	246
6.2.5 Placing the cutterbar on the cutterbar trailer	247

## 7 CEBIS operation (Version 8.23)

<b>7.1 CLAAS CEBIS on-board information system</b>	<b>249</b>
<b>7.2 CEBIS monitor and rotary switch</b>	<b>250</b>
7.2.1 C keys	250
7.2.2 Rotary switch D	250
7.2.3 Flagging Box	251
7.2.4 Multifunction handle	251
7.2.5 Monitor areas E (Harvest display)	252
<b>7.3 Rotary switch D</b>	<b>256</b>
<b>7.4 Prior to initial operation</b>	<b>258</b>
<b>7.5 Vehicle information display</b>	<b>259</b>
<b>7.6 Harvest display</b>	<b>260</b>
<b>7.7 Montana control system</b>	<b>261</b>
7.7.1 Axle control mode	261
7.7.2 Cutting angle control	261
7.7.3 Lateral levelling control	262
7.7.4 Montana axle end stops	262
7.7.5 Cutting angle limits	262
7.7.6 Lateral levelling limits	263
7.7.7 Display period	263
<b>7.8 CLAAS CRUISE PILOT</b>	<b>264</b>
7.8.1 Maximum ground speed	264
7.8.2 Zero throughput	264
<b>7.9 Yield mapping</b>	<b>265</b>
<b>7.10 Flagging</b>	<b>267</b>
<b>7.11 GPS</b>	<b>268</b>
7.11.1 Mapping ON/OFF	268
7.11.2 Mapping monitor	268
7.11.3 Load GPS data	269
<b>7.12 Preset reel values</b>	<b>270</b>
7.12.1 Horizontal reel position	270
7.12.2 Reel speed	270
7.12.3 Reel height	271

<b>7.13 Preset front attachment values</b> .....	<b>272</b>
7.13.1 Snapping plate clearance .....	272
7.13.2 Cutterbar table length .....	272
7.13.3 CAC settings .....	273
7.13.4 CAC setting for LEXION Montana .....	274
<b>7.14 Partial width selection</b> .....	<b>275</b>
<b>7.15 Yield meter</b> .....	<b>276</b>
7.15.1 Components .....	276
7.15.2 Basic settings and calibration .....	277
7.15.3 Preparations for yield measuring .....	277
7.15.4 Moisture measurement ON/OFF, Moisture correction, Storage moisture .....	279
7.15.5 A quick way to obtain reasonable measuring data .....	279
<b>7.16 Yield measuring</b> .....	<b>280</b>
7.16.1 Calibration factor .....	280
7.16.2 Yield zero point measuring .....	280
7.16.3 Test-weighing .....	281
7.16.4 Weight measured .....	281
7.16.5 Moisture correction .....	281
7.16.6 Moisture measurement ON/OFF .....	282
7.16.7 Zero angle .....	282
7.16.8 Storage moisture .....	282
7.16.9 Display dry yield .....	283
<b>7.17 Crop-dependent settings</b> .....	<b>284</b>
7.17.1 List of crops .....	284
7.17.2 Cleaning by blowing .....	286
<b>7.18 Recording</b> .....	<b>287</b>
7.18.1 Planned records .....	287
7.18.2 Start / Stop .....	289
7.18.3 Completed records .....	289
7.18.4 Daily recorder .....	291
7.18.5 Total recorder .....	292
7.18.6 Crop recorder .....	292
7.18.7 Copying the chip card .....	293
<b>7.19 Adjustments</b> .....	<b>294</b>
7.19.1 Cutterbar .....	294
7.19.2 Speeds .....	299
7.19.3 Tachometer .....	301
7.19.4 Separation .....	304
7.19.5 CEBIS .....	305
7.19.6 Maintenance .....	310
7.19.7 Operator's manual .....	311
7.19.8 Code protection .....	315
<b>7.20 Engine loading</b> .....	<b>316</b>
7.20.1 Engine diagnosis .....	316
<b>7.21 Alarms</b> .....	<b>317</b>
<b>7.22 Messages</b> .....	<b>318</b>
<b>7.23 Fault / Remedy - Yield meter</b> .....	<b>319</b>
<b>7.24 Guideline values for pulses/100 m</b> .....	<b>321</b>

## 8 Operation – Basic machine

<b>8.1 Feed rake conveyor</b>	<b>322</b>
8.1.1 Feeder chain height adjustment (up to serial no. ...)	322
8.1.2 Feeder chain height adjustment (from serial no. ...)	322
8.1.3 Feeder chain safety feature	323
8.1.4 Drum inspection cover	324
8.1.5 Front attachment reverser	325
8.1.6 Checking the setting of the cutterbar floatation springs	325
8.1.7 Cutting height indicator	327
8.1.8 Spring pressure indicator	327
8.1.9 Blocking the front attachment floatation springs (Mechanical blocking)	327
8.1.10 Unlocking the front attachment floatation springs (Mechanical blocking)	327
8.1.11 Setting the drop rate of the front attachment	328
8.1.12 Engaging the front attachment (switch console, up to serial no. ...)	328
8.1.13 Engaging the front attachment (switch console, from serial no. ...)	329
8.1.14 Disengaging the front attachment (switch console)	329
8.1.15 Disengaging the front attachment (multifunction handle)	330
<b>8.2 Threshing mechanism</b>	<b>331</b>
8.2.1 Stone trap (large stone trap)	331
8.2.2 Engaging the threshing mechanism	332
8.2.3 Disengaging the threshing mechanism	333
8.2.4 Threshing drum	333
8.2.5 Cleaning the threshing mechanism	333
8.2.6 Concave setting	334
8.2.7 Basic concave setting	334
8.2.8 Designations and dimensions for grain concave / maize concave (large stone trap)	340
8.2.9 Adjusting the concave position sensor	341
8.2.10 Threshing drum speed	342
8.2.11 Drum drives	342
8.2.12 Two-step variable-speed drive	342
8.2.13 Removing and installing the preconconcave segments (large stone trap)	343
8.2.14 Concave segment	344
8.2.15 Removing a concave segment (large stone trap)	345
8.2.16 Installing the concave segment (large stone trap)	346
8.2.17 Disawner plates	347
8.2.18 Unslugging the threshing drum	347
8.2.19 Deflector curtain	348
8.2.20 Adjusting the deflector curtain	349
<b>8.3 Straw walker</b>	<b>350</b>
8.3.1 Straw walker - General	350
8.3.2 Cleaning the straw walker	350
8.3.3 Straw walker house plugging warning signal	351
8.3.4 Multiple finger separation system	351
8.3.5 Straw walker performance monitor	352
8.3.6 Straw walker sensors	352
8.3.7 Centre risers	353

8.3.8	Side risers	355
8.3.9	Parallel risers	357
8.3.10	CCM risers	358
<b>8.4</b>	<b>Cleaning (Standard cleaning system)</b>	<b>360</b>
8.4.1	Cleaning unit	360
8.4.2	Preparation floor	361
8.4.3	Frogmouth sieves	361
8.4.4	Electric sieve adjustment	361
8.4.5	Removing the sieves	362
8.4.6	Installing the sieves	365
8.4.7	Tightening torques of axial mountings for the upper and lower sieves	366
8.4.8	Sieves – Basic adjustment	367
8.4.9	Harvesting without lower sieves	367
8.4.10	Covering the returns pan	368
8.4.11	Cleaning fan	368
8.4.12	Adjusting the fan speed adjustment	368
8.4.13	Under-ventilated cleaning step	369
8.4.14	Adjusting the pre-separation deflector	369
8.4.15	Wind board	370
8.4.16	Fan shutters for threshing grass seed and similar crops (accessory)	370
8.4.17	3-D cleaning system	371
8.4.18	Returns	372
8.4.19	Inspecting the returns	372
8.4.20	Upper sieve performance monitor	373
8.4.21	Sieve pan sensor	373
<b>8.5</b>	<b>Grain delivery</b>	<b>374</b>
8.5.1	Augers and auger troughs	374
8.5.2	Elevators	374
8.5.3	Grain tank	375
8.5.4	Grain tank extension	376
8.5.5	Unloading the grain tank	377
8.5.6	Emergency unloading grain tank cover	377
8.5.7	Grain tank unloading aid (accessory)	378
8.5.8	Grain tank unloading tube	378
8.5.9	Swinging the grain tank unloading tube out and in	379
8.5.10	Grain tank unloading tube transport position	380
8.5.11	Cleaning covers on the grain tank unloading tube	381
8.5.12	Shear bolt for grain tank unloading	381
8.5.13	Engaging and disengaging grain tank unloading	382
8.5.14	Grain tank access	383
8.5.15	Automatic chain lubrication – grain tank unloading (accessory)	384
8.5.16	Grain tank fill indicator	384
<b>8.6</b>	<b>Straw chopper with standard spreader</b>	<b>385</b>
8.6.1	Straw chopper	385
8.6.2	Checks prior to putting the straw chopper with standard spreader into operation	385
8.6.3	Straw chopper with standard spreader	385

8.6.4	Putting the straw chopper into operation (swinging the standard spreader to chopping position) . . . . .	386
8.6.5	Putting the straw chopper out of operation (swinging the standard spreader to swathing position) . . . . .	386
8.6.6	Swinging the standard spreader to cutterbar trailer transport position . . . . .	388
8.6.7	Adjusting the cross knife (straw chopper with standard spreader) . . . . .	389
8.6.8	Adjusting the length of cut (straw chopper with standard spreader) . . . . .	390
8.6.9	Activating the rasp bar (accessory) (straw chopper with standard spreader) . . . . .	391
8.6.10	Adjusting the standard spreader spreading width (up to serial no. ...) . . . . .	392
8.6.11	Adjusting the standard spreader spreading width (from serial no. ...) . . . . .	393
8.6.12	Adjusting the height of standard spreader . . . . .	394
8.6.13	Adjusting the spreading width centralising switch of standard spreader . . . . .	395
8.6.14	Reducing the chopper speed . . . . .	395
<b>8.7</b>	<b>Chaff spreader . . . . .</b>	<b>398</b>
8.7.1	Chaff spreader . . . . .	398
8.7.2	Adjusting the chaff spreader speed . . . . .	398
8.7.3	Adjusting the spreading width . . . . .	399
8.7.4	Folding the chaff spreader open . . . . .	399
8.7.5	Folding the chaff spreader in . . . . .	401
8.7.6	Removing the chaff spreader feed pan . . . . .	401
8.7.7	Installing the chaff spreader feed pan . . . . .	402
<b>8.8</b>	<b>Straw spreader . . . . .</b>	<b>403</b>
8.8.1	Straw spreader . . . . .	403
8.8.2	Adjusting the spreading width . . . . .	403
8.8.3	Fitting the spreader blades . . . . .	403
<b>8.9</b>	<b>LEXION 560 – 520 Montana sieve charts and suggested combine adjustments (standard cleaning system) . . . . .</b>	<b>404</b>
8.9.1	Sieve chart: LEXION 560 – 520 Montana (standard cleaning system) . . . . .	404
8.9.2	Threshing chart: LEXION 560 – 520 Montana (standard cleaning system) . . . . .	405
<b>8.10</b>	<b>Disawning . . . . .</b>	<b>411</b>
8.10.1	Disawner plates . . . . .	411
8.10.2	Concave segment . . . . .	412
<b>8.11</b>	<b>Problem, cause and / or remedy – Basic machine . . . . .</b>	<b>413</b>
8.11.1	Front attachment . . . . .	413
8.11.2	Montana functions . . . . .	414
8.11.3	Threshing mechanism . . . . .	415
8.11.4	Cleaning unit . . . . .	417
8.11.5	Grain delivery . . . . .	418
8.11.6	Straw / Putting down the material . . . . .	419
<b>9</b>	<b>Maintenance – Basic machine</b>	
<b>9.1</b>	<b>Important maintenance instructions . . . . .</b>	<b>420</b>
9.1.1	Important maintenance instructions and safety rules . . . . .	420
9.1.2	Front attachment . . . . .	420
9.1.3	Correct tension of steel roller chains . . . . .	420
9.1.4	Belts . . . . .	420
9.1.5	Variable-speed drives . . . . .	421
9.1.6	Bolts . . . . .	421
9.1.7	Lubrication . . . . .	421

9.1.8	Brakes	422
9.1.9	Wheels / tyres	423
9.1.10	Hydraulic system	424
9.1.11	Cleanliness of lubricants	424
9.1.12	Electrical system	425
9.1.13	Air conditioner	426
9.1.14	Safety guards / spare parts	427
9.1.15	Unbalance	427
9.1.16	Welding work (up to serial no. ...)	428
9.1.17	Welding work (from serial no. ...)	429
<b>9.2</b>	<b>Maintenance schedules</b>	<b>430</b>
9.2.1	Basic machine maintenance schedule	430
<b>9.3</b>	<b>Lubricants charts</b>	<b>434</b>
9.3.1	Lubricants	434
<b>9.4</b>	<b>Hydraulic system</b>	<b>437</b>
9.4.1	Accumulators	437
9.4.2	Checking the oil level	437
9.4.3	Hydraulic oil change	438
9.4.4	Changing the hydraulic oil filter	439
9.4.5	Saturation of hydraulic oil filter (from serial no. ...)	439
9.4.6	Replacing the return filter (up to serial no. ...)	440
9.4.7	Replacing the return filter (from serial no. ... up to serial no. ...)	441
9.4.8	Replacing the return filter (from serial no. ...)	441
9.4.9	Filling instructions when replacing the hydraulic oil (Sauer 90 R 130 / 90 M 100)	442
9.4.10	Bleeding the cutterbar cross-levelling hydraulic cylinder (machines with Auto Contour) (up to serial no. ...)	443
9.4.11	Bleeding the cutterbar cross-levelling hydraulic cylinder (machines with Auto Contour) (from serial no. ...)	445
<b>9.5</b>	<b>Transmission</b>	<b>447</b>
9.5.1	2-speed gearbox	447
9.5.2	Differential and axle carrier	448
9.5.3	Wheel rockers	449
9.5.4	Final drive gearbox (planetary gear)	450
9.5.5	Threshing drum reduction gearbox	451
9.5.6	Engine output transfer gearbox	452
9.5.7	Grain tank unloading gearbox	453
9.5.8	Lubricating instructions for the wheel rocker ball race slewing rings	454
<b>9.6</b>	<b>Feed rake conveyor</b>	<b>456</b>
9.6.1	Tensioning the feeder chains (up to serial no. ...)	456
9.6.2	Tensioning the feeder chains (from serial no. ...)	457
9.6.3	Adjusting the front attachment cutting angle linkage	458
9.6.4	Adjusting the front attachment lateral levelling linkage (Montana) (from serial no. ...)	458
9.6.5	Cleaning the suction blower (accessory)	459
<b>9.7</b>	<b>Drive axle</b>	<b>460</b>
9.7.1	Adjusting the linkage for wheel rockers	460

<b>9.8 Elevator chains</b> .....	<b>461</b>
9.8.1 Tensioning the grain elevator chain (machine without yield meter) .....	461
9.8.2 Tensioning the grain elevator chain (machine with yield meter / without cock) .....	462
9.8.3 Tensioning the grain elevator chain (machine with yield meter / with cock) .....	462
9.8.4 Relieving the tension of the grain elevator chain (machine with yield meter) .....	463
9.8.5 Tensioning the returns elevator chain .....	464
<b>9.9 Drive belts / drive chains</b> .....	<b>465</b>
9.9.1 General Information .....	465
9.9.2 Drive diagram, left (LEXION 560 - 520 Montana with standard cleaning system) .....	466
9.9.3 Drive diagram, right (LEXION 560 - 520 Montana with standard cleaning system) .....	468
9.9.4 Removing the belt (1) .....	470
9.9.5 Installing the belt (1) .....	470
9.9.6 Removing the belt (2) .....	472
9.9.7 Installing the belt (2) .....	473
9.9.8 Removing the belt (3) .....	475
9.9.9 Installing the belt (3) .....	476
9.9.10 Removing the belt (4) .....	478
9.9.11 Installing the belt (4) .....	480
9.9.12 Removing the belt (5) .....	481
9.9.13 Installing the belt (5) .....	483
9.9.14 Removing belt (6) (without torque support) .....	484
9.9.15 Installing belt (6) (without torque support) .....	485
9.9.16 Removing the belt (7) .....	486
9.9.17 Installing the belt (7) .....	488
9.9.18 Removing the belt (8) .....	490
9.9.19 Installing the belt (8) .....	491
9.9.20 Removing the belt (9) .....	492
9.9.21 Installing the belt (9) .....	495
9.9.22 Removing the belt (10) .....	497
9.9.23 Installing the belt (10) .....	498
9.9.24 Removing the chain (11) .....	500
9.9.25 Installing the chain (11) .....	501
9.9.26 Removing the belt (12) .....	503
9.9.27 Installing the belt (12) .....	504
9.9.28 Removing the belt (13) .....	506
9.9.29 Installing the belt (13) .....	507
9.9.30 Removing the belt (14) .....	509
9.9.31 Installing the belt (14) .....	510
9.9.32 Removing the belt (17) .....	511
9.9.33 Installing the belt (17) .....	512
9.9.34 Removing the belt (18) .....	514
9.9.35 Installing the belt (18) .....	516
9.9.36 Removing the belt (19) .....	517
9.9.37 Installing the belt (19) .....	518
9.9.38 Removing the belt (20) .....	520
9.9.39 Installing the belt (20) .....	522
9.9.40 Removing the belt (22) .....	524

9.9.41	Installing the belt (22)	525
9.9.42	Removing the belt (45)	526
9.9.43	Installing the belt (45)	527
9.9.44	Removing the belt (46)	529
9.9.45	Installing the belt (46)	530
9.9.46	Removing the belt (48)	531
9.9.47	Installing the belt (48)	532
9.9.48	Removing the belt (51)	533
9.9.49	Installing the belt (51)	534
9.9.50	Removing the belt (52)	535
9.9.51	Installing the belt (52)	536
9.9.52	Removing the belt (53)	538
9.9.53	Installing the belt (53)	540
9.9.54	Removing the belt (54)	541
9.9.55	Installing the belt (54)	542
9.9.56	Removing the chain (55)	543
9.9.57	Installing the chain (55)	544
9.9.58	Removing the chain (56)	544
9.9.59	Installing the chain (56)	545
9.9.60	Removing the belt (57)	546
9.9.61	Installing the belt (57)	547
9.9.62	Remove belt (58) (CATERPILLAR C-9 / 3126 B)	549
9.9.63	Install belt (58) (CATERPILLAR C-9 / 3126 B)	550
9.9.64	Remove belt (58) (CATERPILLAR C-13 / C-10)	551
9.9.65	Install belt (58) (CATERPILLAR C-13 / C-10)	552
9.9.66	Removing the belt (59)	553
9.9.67	Installing the belt (59)	553
<b>9.10</b>	<b>Cab / air conditioner</b>	<b>555</b>
9.10.1	Cleaning the cab filters	555
9.10.2	Cleaning the units located in the cab roof	555
9.10.3	Cleaning the windscreen and the side windows	556
9.10.4	Cleaning the condenser	557
9.10.5	Checking the refrigerant level	557
9.10.6	Replacing the filter receiver drier	558
9.10.7	Required refrigerant quantity – refrigerant R 134 a	558
9.10.8	Oil for the compressor	558
9.10.9	Maintenance work before the harvest	558
<b>9.11</b>	<b>Fire extinguisher</b>	<b>560</b>
9.11.1	Checking the fire extinguisher	560
<b>9.12</b>	<b>Compressed-air system (accessory)</b>	<b>561</b>
9.12.1	Compressed-air system	561
9.12.2	Compressed-air connections	562
9.12.3	Compressed-air gun and woven hose	562
9.12.4	Draining the accumulator	563
9.12.5	Pressure controller	563
9.12.6	Checking the safety valve	564

<b>9.13 Straw chopper with standard spreader</b> .....	<b>565</b>
9.13.1 Replacing the free-swinging knives for grain .....	565
9.13.2 Removing the straw guide plate (straw chopper with standard spreader) .....	565
9.13.3 Installing the straw guide plate (straw chopper with standard spreader) .....	567
9.13.4 Removing the free-swinging knives for grain .....	568
9.13.5 Bolting down the free-swinging knives for grain .....	568
9.13.6 Replacing the stationary knives .....	571
<b>9.14 Winter storage</b> .....	<b>572</b>
9.14.1 Winter storage instructions for combines .....	572

## **10 Maintenance – Engine**

<b>10.1 Important maintenance instructions</b> .....	<b>574</b>
10.1.1 Important maintenance instructions and safety rules .....	574
10.1.2 Cooling water and air intake hoses .....	574
10.1.3 Coolant .....	574
10.1.4 Belts .....	574
10.1.5 Cleaning the engine compartment and hazard areas .....	575
10.1.6 Alternator .....	575
10.1.7 Warranty on non genuine CATERPILLAR products .....	575
10.1.8 Approved engine oils .....	575
10.1.9 Engine oils with dry lubricant additives .....	575
<b>10.2 Maintenance schedules</b> .....	<b>576</b>
10.2.1 Maintenance schedule CATERPILLAR C-10 / C-9 / 3126 B, exhaust gas class 2 .....	576
10.2.2 Maintenance schedule CATERPILLAR C-13 / C-9 / C-6.6, exhaust gas class 3a .....	578
<b>10.3 Lubricants charts</b> .....	<b>580</b>
10.3.1 Lubricants chart CATERPILLAR C-10 / C-9 / 3126 B engines, exhaust gas class 2 .....	580
10.3.2 Cooling system lubricants chart of CATERPILLAR C-10 / C-9 / 3126 B, exhaust gas class 2 .....	581
10.3.3 Lubricants chart of CATERPILLAR C-13, C-9, C-6.6 engines, exhaust gas class 3a .....	582
10.3.4 Cooling system lubricants chart of CATERPILLAR C-13, C-9, C-6.6, exhaust gas class 3a .....	583
<b>10.4 Engine overview</b> .....	<b>584</b>
10.4.1 Engine overview CATERPILLAR C-13 .....	584
10.4.2 Engine overview CATERPILLAR C-10 .....	585
10.4.3 Engine overview of CATERPILLAR C-9 (exhaust gas class 3a) .....	586
10.4.4 Engine overview of CATERPILLAR C-9 (exhaust gas class 2) .....	587
10.4.5 Engine overview CATERPILLAR C-6.6 .....	588
10.4.6 Engine overview CATERPILLAR 3126 B .....	589
<b>10.5 Fuel system / engine oil</b> .....	<b>590</b>
10.5.1 Fuel system .....	590
10.5.2 Fuel tank .....	590
10.5.3 Fuel tank breather (from serial no. ...) .....	590
10.5.4 Fuel shut-off tap .....	591
10.5.5 Water separator / fuel prefilter (standard equipment – small version) .....	591
10.5.6 Water separator / Fuel pre-filter (accessory) .....	592
10.5.7 Replacing the fuel filter cartridge (CATERPILLAR C-13 / C-10 / C-9 / 3126 B) .....	593
10.5.8 Replacing the fuel filter cartridge (CATERPILLAR C-6.6) .....	594
10.5.9 Bleeding the fuel system (CATERPILLAR C-13 / C-10 / C-9 / 3126 B) .....	595

10.5.10 Manual fuel primer pump with fuel sediment bowl (CATERPILLAR C-6.6)	596
10.5.11 Engine oil level check	597
10.5.12 Engine oil change	597
10.5.13 Draining used oil	598
10.5.14 Oil filter	600
10.5.15 Topping up engine oil	602
<b>10.6 Cooling system</b>	<b>604</b>
10.6.1 Coolant	604
10.6.2 Draining coolant from the water radiator	604
10.6.3 Topping up coolant	605
10.6.4 Identify the coolant type	606
10.6.5 Coolant mixing ratio	607
10.6.6 Changing the coolant	608
10.6.7 Shut down the overheated engine	609
10.6.8 Rotary chaff screen	610
10.6.9 Cleaning the radiator	612
10.6.10 Diesel engine fault	612
<b>10.7 Dry-type air cleaner</b>	<b>614</b>
10.7.1 Dry-type air cleaner in general	614
10.7.2 Warning device	615
10.7.3 Cleaning the air filter intake screen	616
10.7.4 Cleaning the air filter with plastic housing	616
10.7.5 Cleaning the air filter with metal housing	618
10.7.6 Safety filter cartridge	620
10.7.7 Removing and installing safety cartridge (plastic housing)	621
10.7.8 Removing and installing safety cartridge (metal housing)	622
<b>10.8 Alternator</b>	<b>623</b>
10.8.1 Cleaning the alternator	623
<b>10.9 Electrical system</b>	<b>624</b>
10.9.1 Battery	624
10.9.2 Alternator	625
<b>10.10 Problem, cause and / or remedy</b>	<b>626</b>
10.10.1 Engine	626
<b>10.11 Winter storage</b>	<b>628</b>
10.11.1 Engine winter storage	628

**11 Lubrication chart**

<b>11.1 Lubrication points</b>	<b>629</b>
11.1.1 Greasing cycles	629
11.1.2 Lubrication points - 10 h on the left	632
11.1.3 Lubrication points - 50 h on the left	633
11.1.4 Lubrication points - 50 h on the right	635
11.1.5 Lubrication points - 100 h on the left	636
11.1.6 Lubrication points - 100 h on the right	639
11.1.7 Lubrication points - 500 h on the left	641
11.1.8 Lubrication points - 500 h on the right	642

# 1 Introduction

## 1.1 General Information

102866

### 1.1.1 How to use this manual

This operator's manual is the original operator's manual. In the following texts, it will be referred to simply as the operator's manual.

This operator's manual is intended for all users and provides information on the use, operation, adjustment, maintenance, cleaning and transportation of the machine.

Provided all instructions regarding proper maintenance and operation of your machine are followed, you can count on many years of reliable service.

Failure to perform maintenance or incorrect operation lead to an increased safety risk, premature wear, a reduction in performance, loss of earnings and time. Have the post harvest check / annual check performed regularly by your CLAAS dealer. A combination of the prescribed maintenance work with the post harvest check is recommended.

If you use the latest expertise and experience that went into this machine, it will render you consistently excellent service.

There is a separate operator's manual for front attachments and hitched devices.

#### Texts and figures





Pictures and graphics are neutral. Differences are pointed out by notes beneath the figure.

Texts are short and not machine-specific as far as possible. Differences are pointed out by intermediate headings.

Different types of texts can easily be distinguished from one another by their formats. The following formats are distinguished:

<b>Formatting</b>	<b>Meaning</b>	<b>Description</b>
Description	Text	Further information on the subject.
– Instructions	Operation	Operations which must be carried out one after the other.
<i>Result</i>	Result	Consequence of operations carried out.

References can easily be distinguished by suitable symbols. The following symbols are distinguished:

Symbol	Meaning	Description
	See index	The symbol  indicates that further information on this subject can be found at another point in this manual.
	See index of the relevant Operator's manual	The symbol  indicates that further information on this subject can be found in the Operator's manual of that machine or equipment.

**Document structure based on subassemblies**

As far as the contents permit, the chapters of this manual are structured according to subassemblies. The structure of these subassemblies is the same in all chapters.

Different product groups have different document structures based on subassemblies. CLAAS always takes care to keep these document structures based on subassemblies identical in any documents.

**Search and find**

The wanted subject can easily be found with the recurring subassembly structure, using the table of contents or the header line of this manual.

In addition, the index of this manual is a useful tool for locating a specific subject. The index can be found on the last pages of this manual.

**Directions**

Text elements such as front, rear, right and left always apply to the direction of travel. In figures, the direction of travel may be indicated by a direction arrow.

**Optional equipment and accessories**

Optional equipment includes equipment variants of the machine where different variants are available, but only one variant can be fitted.

Accessories are equipment items that may be additionally fitted to the machine, but are not included in the standard scope of the machine.

Both terms designate possible variants. Standard scopes and equipment variants may differ in other countries.

*Your CLAAS Service Department*

### 1.1.2 Validity of instructions

The present Manual applies to the following machine / front attachment:

Designation	Type	Machine serial number	
		from	to
LEXION 560 / 550 Montana	580	58000029	–
LEXION 530 / 520 Montana	582	58200052	–

## 2 General Information

### 2.1 Road traffic

In addition to his driving licence, the operator must always carry the copy of the vehicle type approval registration issued by the Kraftfahrt-Bundesamt (the German Federal Motor Vehicle Executive). A warning triangle and, on machines over 4 t permissible total weight, at least one wheel chock must always be carried on the combine.

When driving on public roads with the combine harvester comply with all the requirements stated under letter C in the copy of the vehicle type approval registration (§ 18 Section 5 StVZO) issued by the Kraftfahrt-Bundesamt.

On machines with excess width (width over the tyres), a vehicle type approval registration for individual vehicles (single expert opinion) and a special approval in accordance with § 70, Section 1, clauses 1 and 2 of the StVZO must be carried instead of the General Operating Permit. Furthermore, all the requirements stated in the vehicle type approval registration for individual vehicles and in the special approval must be observed. The issue of a special approval differs from country to country. The excess width must be marked in accordance with the regulations for marking of excess-width road vehicles (e.g. two marker boards at the front and the rear each, protective bar, two amber flashing warning beacons).

If any part(s) of the combine harvester is/are subsequently modified whose condition is/are prescribed or the operation of which (after being modified) could represent a hazard to other road users, then the vehicle type approval registration shall no longer be valid and application must be made for a new vehicle type approval registration. In this case the machine must be presented to the motor vehicle safety inspection authority responsible (e.g. TÜV) in order to obtain an expert opinion certificate (§ 19 section 2 StVZO).

If you are in any doubt as to whether this situation applies in your case, please contact us as manufacturers.

If a transport vehicle for front attachments is towed behind the combine harvester, then the cable for the lighting system must be connected and the good condition of the lighting system assured.

If the combine is equipped with a maize picker head or folding cutterbar, the regulations and requirements of the machine's General Operating Permit must be observed, in particular the requirements concerning ballast weights and tyres.

### **Registration**

As a self propelled working machine with a maximum speed **of more than 20 km/h**, the combine is subject to registration and needs to have licence plates fitted.

As a self propelled working machine with a maximum speed **of up to 20 km/h**, the combine is not subject to registration and does not need to have licence plates fitted.

The machine must be clearly and indelibly marked on the left side with the Christian name and surname of the owner and his address.

The towing of trailers in the trailer hitch when driving on public roads is **not** permitted.

Road traffic regulations may vary between countries. In case of discrepancies between the instructions provided by the manufacturer and the traffic regulations of the relevant countries, the traffic regulations of the countries concerned apply.

## 2.2 Important notice

The instructions contained in this manual should be carefully read and observed by all persons involved with the operation, maintenance and inspection of this machine in order to prevent accidents. In particular, read the section "Safety rules".

The use of spare parts, accessories and ancillary equipment other than genuine CLAAS products or those which have been tested and approved by CLAAS, may change the specified design characteristics of this CLAAS machine or detract from its functional performance, with a possible adverse effect on the active and/or passive operational safety of the machine and its occupational safety standards (accident prevention).

CLAAS is in no way liable for any damage or personal injury caused through the use of other than original or approved CLAAS parts, accessories and ancillary equipment.

Technical data, dimensions and weights are given as an indication only. CLAAS reserves the right to make changes subsequently as technical developments continue. Responsibility for errors or omissions is not accepted.

Front, rear, right and left refer to the direction of forward travel.

## 2.3 Identification plate / Serial number

### 2.3.1 Identification plate / Serial number

The diagram shows a rectangular identification plate with the following fields and callouts:

- A:** Points to the 'Appellation commerciale' field.
- B:** Points to the 'Typ/Type' field.
- C:** Points to the 'Ident.Nr.' field.
- D:** Points to the 'Zul.Ges. Gewicht' field.
- E:** Points to the 'charge maximale admissible à L'avant' field.
- F:** Points to the 'auj. année' field.
- G:** Points to the 'kW' field.
- H:** Points to the 'charge maximale admissible à L'arrière' field.
- I:** Points to the '24 R-03' approval code field.
- J:** Points to the 'Absorption coefficient' field.

At the bottom of the plate, it reads: 'RECEPTION à la DRIRE' and 'CLAAS Selbstfahrende Erntemaschinen GmbH 33428 Harsewinkel, Made in Germany'.

603008

3903

1

	Designation
A	Equipment options
B	Maximum admissible total weight
C	Type
D	Identification no. (machine serial number)
E	Maximum admissible load on front axle
F	Year of construction
G	Rated capacity of engine (kW)
H	Maximum admissible load on rear axle
I	Approval no. according to ECE-R 24
J	Absorption coefficient according to ECE-R 24

(Fig. 1)

69967

When ordering spare parts and in case of technical questions, indicate the machine number of the CLAAS combine and when the engine, front attachments, cutterbar and maize picker are concerned, also the respective serial numbers.

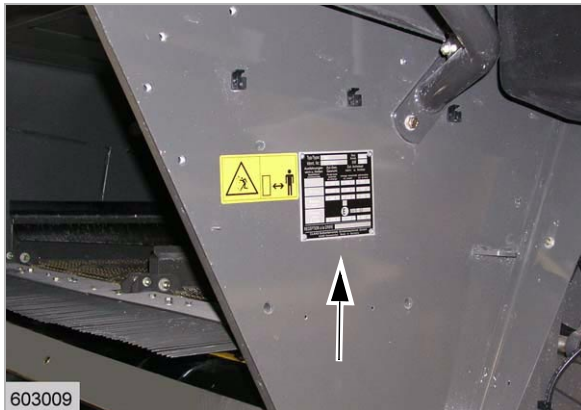
This is necessary as otherwise, incorrect spare part deliveries may result.

5873

**2.3.2 Identification plate**

The identification plate of the machine is located on the right hand side above the rear axle.

*(Fig. 2)*



603009

9502

2

**2.3.3 Machine serial number**

The machine serial number is stamped on the engine frame underneath the operator's platform on the right hand side of the machine.

*(Fig. 3)*



603010

3907

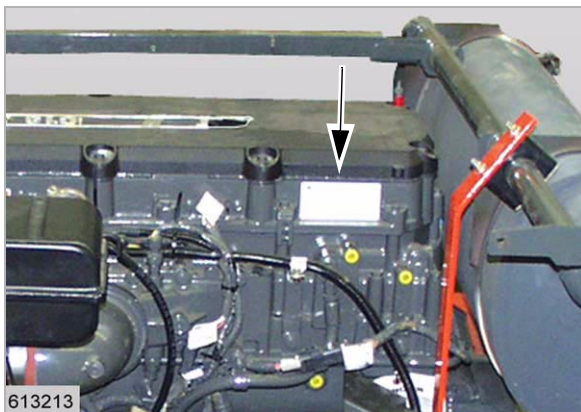
3

**2.3.4 Engine serial number**

**CATERPILLAR C-13, exhaust emission level 3a**

Engine number: MDB ...

*(Fig. 4)*



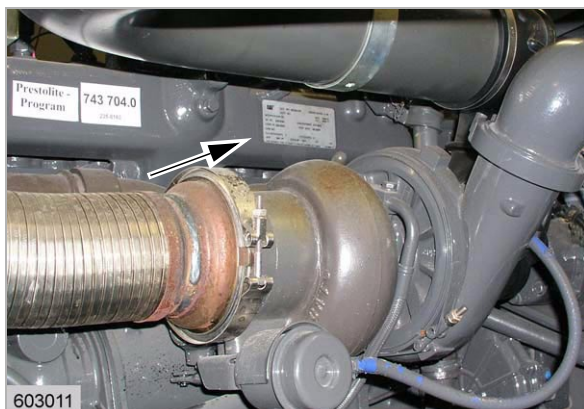
613213

4803

4

5874

24873



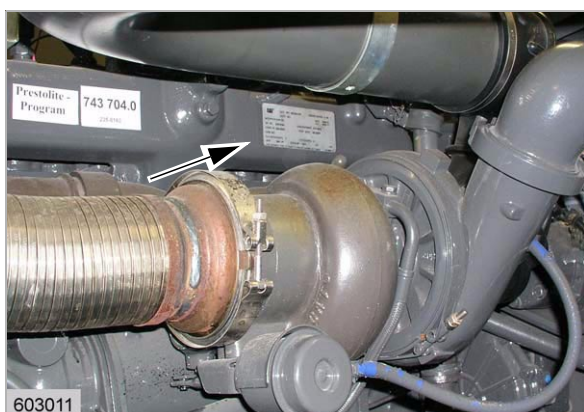
8413

5

### CATERPILLAR C-10

The identification plates showing the engine serial no. are attached above the turboblower.

(Fig. 5)



8413

6

### CATERPILLAR C-9, exhaust emission level 2

Engine no: CLJ ...

The identification plates showing the engine serial no. are attached above the turboblower.

(Fig. 6)



9506

7

### CATERPILLAR C-9, exhaust emission level 3a

Engine number: MDB ...

The identification plates showing the engine serial no. are attached above the turboblower.

(Fig. 7)



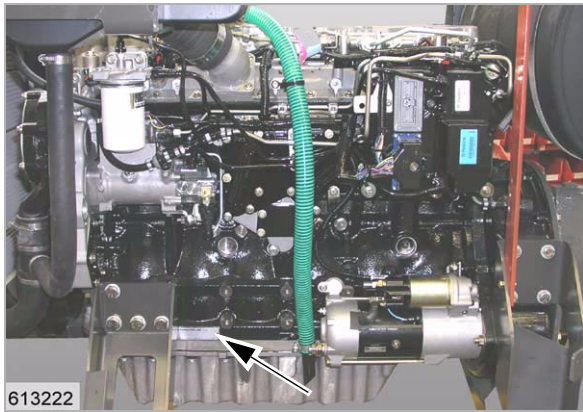
9505

8

### CATERPILLAR 3126 B

The identification plates showing the engine serial no. are attached to the valve cover.

(Fig. 8)



9300

9

**CATERPILLAR C-6.6**

*(Fig. 9)*



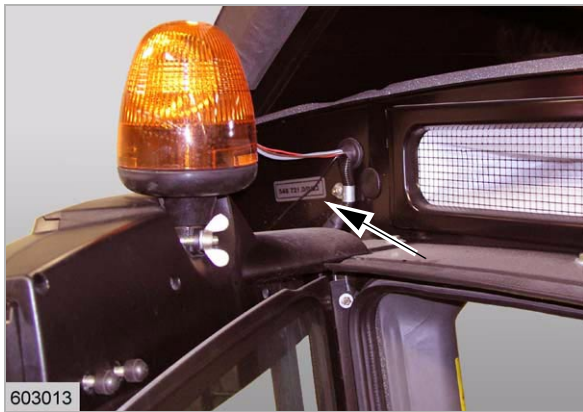
3909

10

**2.3.5 Straw chopper identification plate**

The chopper serial number is provided on the left hand side panel.

*(Fig. 10)*



3910

11

**2.3.6 Cab serial number**

The cab serial number is located at the top of the left hand side, at the rear of the frame.

*(Fig. 11)*

Thank you so much for reading.  
Please click the “Buy Now!”  
button below to download the  
complete manual.



After you pay.

You can download the most  
perfect and complete manual in  
the world immediately.

Our support email:

[ebooklibonline@outlook.com](mailto:ebooklibonline@outlook.com)