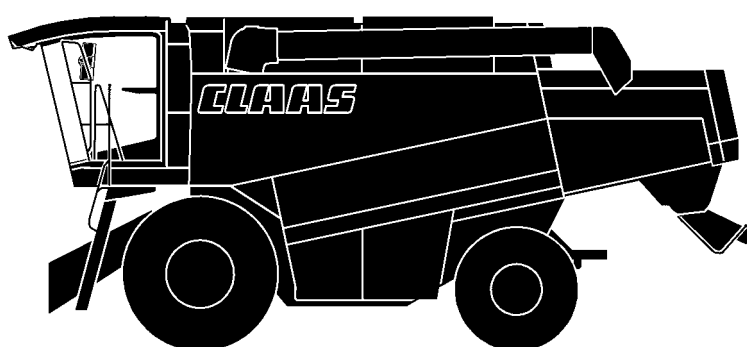


OPERATOR'S MANUAL

CLAAS



LEXION 460 / LEXION 450

LEXION 440 / LEXION 430

LEXION 420 / LEXION 410

CEBIS

1

Introduction

INTRODUCTION

This manual applies to CLAAS LEXION 460 / LEXION 450 / LEXION 440 / LEXION 430 / LEXION 420 and LEXION 410 Combine Harvesters.

It is intended to give the machine operator information on setting, using and servicing the CLAAS Combine Harvester.

Texts and pictures apply, in general, to all combine models covered by this manual, and the information given applies equally, except where reference is made to a particular model in captions to the pictures or in the main text.

Operation and maintenance of important ancillary equipment is also covered by this manual. A separate Operator's Manual is available for cutterbars.

Please read the instructions which apply to the appropriate ancillary equipment on your combine.

Provided you follow the advice on the care and servicing of your machine you will be rewarded with reliable and long service from your Combine Harvester.

We recommend that you allow your authorized CLAAS Dealer to carry out the regular maintenance. Omissions of parts of the maintenance schedule or incorrect operation lead to a drop in performance and cost valuable time. By correct servicing and operation you can make full use of our sound experience and of the latest technical knowledge in combine harvesting with which your combine has been designed and thereby ensure reliability of your Combine Harvester.

This Operator's Manual can be ordered from your CLAAS Dealer as well as the manuals listed below:

- Threshing Instructions for special crops
- Fitting and Operating Instructions for ancillary equipment

CLAAS Service Department

2

Contents

CONTENTS

1. Introduction

Introduction 1.1.1

2. Contents

Contents 2.1.1

3. General information

Road traffic regulations 3.1.1
 Important 3.2.1
 Identification plate / Serial number 3.3.1
 Identification plate 3.3.2
 Combine serial number 3.3.2
 Engine serial number
 CATERPILLAR C9 3.3.2
 Engine serial number
 CATERPILLAR 3126 B 3.3.3
 Straw chopper identification plate 3.3.3
 Cabin serial number 3.3.3

4. Safety rules

Safety rules 4.1.1
 Safety lock 4.1.5
 Fire extinguisher 4.1.5
 Battery master switch 4.1.6
 Wheel chocks 4.1.6
 Positioning the wheel chocks 4.1.6
 Safety decals with pictorials 4.2.1

5. Specifications

Conversion factors 5.1.1
 CLAAS LEXION 460 / 450 / 440 5.2.1
 CLAAS LEXION 430 / 420 5.3.1
 CLAAS LEXION 410 5.4.1
 Safety features 5.5.1
 Front attachments – weights and dimensions 5.6.1

6. Prior to operation

Perform the following steps prior to operation 6.1.1
 Cabin 6.2.1
 Cabin with Climatic 6.2.1
 Climatic 6.2.2
 Operating and display elements 6.2.2
 Putting the Climatic into operation 6.2.3
 Setting the cabin temperature 6.2.4
 Manually setting the evaporator blower speed 6.2.4
 Fully automatic heating 6.2.5
 Manually setting the heating 6.2.6
 Floor heating 6.2.6
 REHEAT operation
 (Dehumidify cab windows) 6.2.7
 Displaying the outside temperature 6.2.8
 Switching the temperature display to Fahrenheit 6.2.8
 Display of malfunction:
 error in thermometer F0 (cabin, blue) 6.2.8
 Display of malfunction:
 error in thermometer F1 (exhaust, yellow) 6.2.8

Display of malfunction:
 error in thermometer F2 (outside, red) 6.2.8
 Cabin with air conditioner
 (Standard version) 6.2.9
 Cabin with compressor-type air conditioning system 6.2.10
 Cabin with heating 6.2.12
 Floor heating 6.2.12
 Demister System
 (Fogged windows) 6.2.12
 Problem, possible cause and / or remedy –
 Compressor-type air conditioner 6.2.13
 Opening and closing the cabin roof 6.2.15
 Windscreen washer system 6.2.15
 Operator's platform 6.3.1
 Operator's platform – Overview 6.3.1
 Switch console 6.3.2
 Monitor
 (Vehicle information display) 6.3.3
 Monitor
 (Harvest display) 6.3.4
 C-keys 6.3.7
 Rotary switch D 6.3.7
 Steering column 6.3.8
 Ignition switch (S) 6.3.8
 Multi-function switch 6.3.9
 Vehicle information unit 6.3.10
 Multi-function handle 6.3.11
 Adjusting the steering column 6.3.12
 Swinging the steering column at the top 6.3.12
 Steering wheel height adjustment 6.3.13
 Central electrics 6.3.13
 Swing grain tank unloading tube out and in 6.3.17
 Safety feature 6.3.17
 Switching grain tank unloading on and off 6.3.18
 Switching threshing mechanism on and off 6.3.18
 Operator's seat 6.3.19
 Operator's seat, mechanical 6.3.19
 Operator's seat with air suspension
 (Optional equipment) 6.3.22
 Ladders 6.3.25
 Front ladder 6.3.25
 Hinged ladder 6.3.25
 Access and ladder extension 6.3.26
 Side position lights in case of excess width 6.3.32
 Side lights in case of excess width 6.3.33
 Rear ladder 6.3.34
 Other uses of the rear ladder 6.3.34
 Driving the combine 6.4.1
 Engine speed rotary switch 6.4.1
 Manoeuvring 6.4.1
 Starting the engine 6.4.2
 Gear ranges 6.4.2
 Servo gearshift
 (Optional equipment) 6.4.3
 Adjusting the binds of the ground speed control lever 6.4.3
 Stopping 6.4.4
 Driving behaviour 6.4.4

Steering	6.4.4
Brakes	6.4.5
Foot brake	6.4.5
Parking brake	6.4.6
Stopping the engine	6.4.6
CLAAS Autopilot (Maize picker head)	6.4.7
CLAAS Autopilot (Grain cutterbar)	6.4.8
Adjusting the directional stability of the combine	6.4.8
Setting the laser sensor in the field	6.4.10
Putting the CLAAS Autopilot into operation	6.4.12
Use in rape with left-hand side cutter	6.4.13
Cutterbar hydraulic cylinders	6.5.1
Attaching cutterbar hydraulic cylinders	6.5.1
Third cutterbar cylinder	6.5.1
Rear wheel drive axle	6.6.1
Adjusting rear wheel drive axle from transport to working position	6.6.1
Wheel tread adjustment – Rear wheel drive axle	6.6.4
Adjustable rear axle	6.6.6
Rear axle wheels – steering angle limiter (Adjustable rear axle)	6.6.8
Side panels	6.7.1
Opening and closing the side panels and the rear door ..	6.7.1
Adjusting the side panel / rear door locks	6.7.2
Cabin and lighting	6.8.1
Headlights, worklights and mirrors	6.8.1
Towing / Crop inspection / Grain tank	6.9.1
Towing	6.9.1
Forwards	6.9.1
Backwards	6.9.1
Crop inspection	6.9.1
Grain tank	6.9.2
Closing the grain tank openings	6.9.2
Installing dual wheels	6.10.1
Operating the front ladder with dual tyres installed	6.10.5
Additional weights	6.11.1
Liquid filling for rear axle tyres	6.11.5
Installing the rear axle weights	6.11.5

7. Installing and removing the cutterbar

Installing the cutterbar	7.1.1
Tilting the cutterbar from transport position	7.1.1
Machines equipped with CLAAS Auto Contour	7.1.2
Adjusting the hydraulic cylinder for transverse cutterbar control	7.1.2
Machines without CLAAS Auto Contour	7.1.3
Locking cutterbars and maize pickers (Cutterbars without Auto Contour)	7.1.5
Connecting the universal drive shafts	7.1.6
Fitting the stand	7.1.6
Removing the cutterbar	7.2.1
Removing the cutterbar	7.2.1
Laying down the cutterbar on the ground	7.2.1
Placing the cutterbar on the cutterbar trailer	7.2.2

8. Operation CEBIS

9. Operation – basic machine

Feeder housing	9.1.1
Chains	9.1.1
Cutterbar reverse drive	9.1.2
Cutterbar floatation springs	9.1.2
Checking the setting of the cutterbar floatation springs ..	9.1.2
Cutting height indicator	9.1.3
Cutterbar spring pressure indicator	9.1.3
Blocking the cutterbar floatation springs	9.1.4
Adjusting drop rate of the front attachment	9.1.4
Cutterbar clutch	9.1.5
Engaging and disengaging the cutterbar	9.1.5
Threshing mechanism	9.2.1
Stone trap	9.2.1
Engaging and disengaging the threshing mechanism	9.2.2
Threshing drum	9.2.3
Cleaning the threshing parts	9.2.3
Basic concave setting	9.2.4
Learning the limit stops	9.2.9
Threshing drum speed	9.2.10
Threshing drum drives	9.2.10
Threshing drum two-step variable speed drive	9.2.10
Installing and removing preconconcave segments	9.2.11
Concave segment	9.2.12
Removing the concave segment	9.2.12
Installing the concave segment	9.2.13
Disawning	9.2.14
Unslugging the threshing drum	9.2.14
Deflector curtain	9.2.15
Straw walkers	9.3.1
Straw walkers	9.3.1
Intensive separation system	9.3.1
Multiple finger separation system	9.3.2
Cleaning the straw walkers	9.3.3
Warning signal	9.3.3
Straw walker risers	9.3.4
Rice risers	9.3.4
Centre risers	9.3.5
Side risers	9.3.6
Parallel risers	9.3.7
CCM risers	9.3.8
Cleaning	9.4.1
Sieve pan	9.4.1
Preparation floor	9.4.1
Frogmouth sieves	9.4.2
Electrical sieve adjustment	9.4.2
Removing the sieves	9.4.3
Installing the sieves	9.4.6
Tightening torques of axial mountings for the upper and lower sieves	9.4.6
Sieves – Basic setting	9.4.7
Harvesting without finishing sieves	9.4.7
Cleaning fan	9.4.8
Electric fan speed adjustment	9.4.9
Wind-controlled cleaning step LEXION 460 – 420	9.4.9

Adjustment of primary wind duct		Chaff spreader / Straw spreader	9.8.1
LEXION 460 – 420	9.4.9	Chaff spreader	9.8.1
Wind board		Folding the chaff spreader open	9.8.2
LEXION 460 – 420	9.4.10	Straw spreader	9.8.4
Wind boards		Adjusting the spread pattern	9.8.4
LEXION 410	9.4.10	Sieve chart and suggested combine adjustments	9.9.1
Fan shutters for combining grass seed and other special crops (Extra equipment)	9.4.11	Sieve chart	9.9.1
Dynamic sidehill levelling (3-D cleaning system)	9.4.12	Suggested combine adjustments	9.9.2
Returns	9.4.12	Disawner plates	9.9.8
Combine performance monitor	9.4.14	Threshing segment	9.9.8
Grain delivery	9.5.1	Problem, cause and / or remedy – Basic machine	9.10.1
Augers and auger troughs	9.5.1	10. Maintenance – basic machine	
Elevators	9.5.2	Important maintenance instructions	10.1.1
Grain tank	9.5.3	Important maintenance instructions and safety rules	10.1.1
Grain tank extension – electrical (9300 / 8500 litres grain tank)	9.5.3	Maintenance schedules and lubricants charts	10.2.1
Grain tank extension – mechanical (8100 / 7800 / 7300 litres grain tank)	9.5.4	Maintenance schedules	10.2.1
Unloading the grain tank	9.5.5	Lubricants charts	10.2.4
Grain tank unloading aid (Extra equipment)	9.5.6	Hydraulic system	10.3.1
Grain tank unloading tube	9.5.6	Hydraulic accumulators	10.3.1
Swinging the unloading tube out and in	9.5.6	Checking the oil level	10.3.1
Inspection doors on the grain tank unloading tube	9.5.8	Changing hydraulic oil	10.3.2
Shear bolt for grain tank unloading	9.5.8	Changing the hydraulic oil filter	10.3.3
Grain tank unloading – engaging and disengaging	9.5.9	Cleaning the coarse filter	10.3.3
Grain tank access	9.5.9	Refilling the system after a hydraulic oil change (Sauer 90 R 130 / 90 M 100)	10.3.4
Automatic chain lubrication – grain tank unloading (Extra equipment)	9.5.10	Bleeding the hydraulic cylinders for cutterbar transverse control	10.3.5
Straw chopper	9.6.1	Transmission / Brakes	10.4.1
Straw chopper (hydraulic)	9.6.1	Transmission gearbox	10.4.1
Before using the straw chopper, check	9.6.1	Checking the oil level	10.4.1
Adjusting spreading width	9.6.2	Oil change	10.4.1
Spreader hopper height adjustment	9.6.2	Final drives (2-step) (20 t / 19 t / 20 t HD)	10.4.2
Electric deflector adjustment	9.6.2	Checking the oil level	10.4.2
Adjusting the length of cut	9.6.3	Oil change	10.4.2
Adjusting cross knife	9.6.3	Final drives	
Putting the straw chopper into operation	9.6.4	(Planetary gear)	10.4.3
Putting the straw chopper out of operation	9.6.5	Checking the oil level	10.4.3
Chopper position for hitching the cutterbar trailer	9.6.5	Oil change	10.4.3
Reducing the speed of the straw chopper	9.6.6	Threshing drum two-step variable speed drive	10.4.4
Moving the V-belt (12) on the pulley	9.6.8	Oil change	10.4.4
Straw chopper	9.7.1	Checking the oil level	10.4.4
Straw chopper (rigid straw chopper)	9.7.1	Transfer gearbox	10.4.5
Before using the straw chopper, check	9.7.1	Checking the oil level	10.4.5
Adjusting spreading width	9.7.2	Oil change	10.4.5
Spreader hopper height adjustment	9.7.2	Grain tank unloading transmission	10.4.5
Electric deflector adjustment	9.7.3	Checking the oil level	10.4.5
Adjusting the length of cut	9.7.3	Oil change	10.4.5
Adjusting cross knife	9.7.4	Gear shift control adjustment	10.4.5
Putting the straw chopper into operation	9.7.4	Foot brake and brake fluid	10.4.6
Putting the straw chopper out of operation	9.7.5	Parking brake	10.4.6
Chopper position for cutterbar trailer hitching	9.7.5	Feeder housing	10.5.1
Reducing the chopper speed	9.7.5	Tension feeder chains	10.5.1
		Cleaning the suction blower (extra equipment)	10.5.1

Elevator Chains	10.6.1	Removing the sieve pan intermediate drive belt (13)	10.7.28
Tensioning the grain elevator chain (Combines without yield meter)	10.6.1	Installing and adjusting the sieve pan intermediate drive belt (13)	10.7.29
Tensioning the grain elevator chain (Combines with yield meter)	10.6.2	Removing the sieve pan intermediate drive belt (14)	10.7.30
Tensioning the returns elevator chain	10.6.2	Installing and adjusting the sieve pan intermediate drive belt (14)	10.7.30
Drive belts / drive chains – basic machine	10.7.1	Removing the sieve pan drive belt (15)	10.7.31
General notes	10.7.1	Installing and adjusting the sieve pan drive belt (15)	10.7.33
Drive system diagram, left-hand side	10.7.2	Removing the fan intermediate drive belt (20)	10.7.34
Drive belts and chains	10.7.2	Installing and adjusting the fan intermediate drive belt (20)	10.7.35
Drive system diagram, right-hand side	10.7.3	Removing the fan drive belt (21)	10.7.36
Drive belts	10.7.3	Installing the fan drive belt (21)	10.7.36
Removing the cutterbar drive belt (1) (Cutterbar drive without variable-speed drive)	10.7.4	Removing the threshing mechanism variable speed drive belt (22)	10.7.37
Installing and adjusting the cutterbar drive belt (1)	10.7.6	Installing the threshing mechanism variable speed drive belt (22)	10.7.38
Removing the cutterbar drive belt (2) (Cutterbar drive with variable-speed drive)	10.7.7	Removing the threshing drum drive belt (23)	10.7.39
Installing and tensioning the cutterbar drive belt (2)	10.7.8	Installing and adjusting the threshing drum drive belt (23)	10.7.40
Removing the cutterbar variable-speed drive belt (3)	10.7.9	Removing the accelerator drive belt (24)	10.7.41
Installing the cutterbar variable-speed drive belt (3)	10.7.10	Installing and adjusting the accelerator drive belt (24)	10.7.42
Removing the impeller drive belt (4)	10.7.11	Removing the rotary radiator screen suction drive belt (28)	10.7.43
Installing and adjusting the impeller drive belt (4)	10.7.12	Installing and adjusting the rotary radiator screen suction drive belt (28)	10.7.44
Removing the cutterbar intermediate drive belt (5)	10.7.13	Tensioning the rotary radiator screen drive belt (32)	10.7.44
Installing and adjusting the cutterbar intermediate drive belt (5)	10.7.14	Tensioning the suction blower drive belt (34)	10.7.44
Removing the hydraulic pump drive belt (6) for straw spreader / chaff spreader	10.7.15	Removing the grain tank unloading drive chain (17)	10.7.45
Installing and adjusting the hydraulic pump drive belt (6) for straw spreader / chaff spreader	10.7.15	Installing and adjusting the grain tank unloading drive chain (17)	10.7.46
Removing the main intermediate drive belt (7)	10.7.16	Cabin / Compressor-type air conditioner	10.8.1
Installing and adjusting the main intermediate drive belt (7)	10.7.18	Cabin	10.8.1
Removing the intermediate drive belt for grain tank unloading (8)	10.7.20	Cleaning the filters	10.8.1
Installing and adjusting the intermediate drive belt for grain tank unloading (8)	10.7.21	Cleaning the units located in the cabin roof	10.8.1
Removing the straw chopper intermediate drive belt (9)	10.7.22	Compressor-type air conditioning system	10.8.2
Installing and adjusting the straw chopper intermediate drive belt (9)	10.7.23	Cleaning the condenser	10.8.2
Straw chopper drive adjustment	10.7.24	Checking the refrigerant level	10.8.3
Relieving the tension on V-belt (10) at spring-loaded cylinder (G) and removing the belt	10.7.25	Replacing the filter receiver-drier	10.8.3
Installing the V-belt (10) and tensioning the belt by means of spring-loaded cylinder (G)	10.7.25	Required refrigerant charge – refrigerant R 134 a	10.8.3
Relieving the tension on drive belt (11) at spring-loaded cylinder (G) and removing the belt	10.7.26	Compressor oil	10.8.4
Installing the drive belt (11) and tensioning it at spring-loaded cylinder (G)	10.7.26	Maintenance work before the harvest	10.8.4
Relieving the tension on straw chopper drive belt (12) and removing the belt (hydraulic straw chopper)	10.7.27	Fire extinguisher	10.9.1
Installing the straw chopper drive belt (12) and tensioning it at spring-loaded cylinder (F) (hydraulic straw chopper)	10.7.27	Fire extinguisher	10.9.1
		Compressed air system (Extra equipment)	10.10.1
		Compressed air connections	10.10.1
		Draining the compressed air accumulator	10.10.2
		Pressure controller	10.10.2
		Straw chopper	10.11.1
		Swinging down the straw guide plate	10.11.1
		Replacing the free-swinging knives	10.11.2

Swinging back the straw guide plate	10.11.3	Engine problems, cause and / or remedy	11.7.1
Replacing the knives		Engine winter storage	11.8.1
(rigid straw chopper)	10.11.3	Engine preservation	11.8.1
Removing the straw guide plate	10.11.4	12. Lubrication chart	
Replacing the free-swinging knives	10.11.5	Lubricants and lubrication instructions	12.1.1
Installing the straw guide plate	10.11.6	13. Index	
Replacing the stationary knives	10.11.7	Index	13.1.1
Spreading unit	10.12.1		
Installing and adjusting the toothed belt	10.12.1		
Speed monitoring	10.13.1		
Setting the magnetic pick-ups (sensors)	10.13.1		
Winter storage instructions for combines	10.14.1		
11. Maintenance – engine			
Important maintenance instructions	11.1.1		
Important maintenance instructions			
and safety rules	11.1.1		
Maintenance schedules and lubricants charts	11.2.1		
Maintenance schedule	11.2.1		
Lubricants chart	11.2.2		
Maintenance – engine	11.3.1		
Engine overview	11.3.1		
Fuel system	11.3.2		
Fuel tank	11.3.2		
Fuel tap	11.3.2		
Water separator / fuel pre-filter			
(Extra equipment – small version)	11.3.3		
Water separator / Fuel pre-filter			
(Extra equipment, replaces fuel pre-filter Fig. 8)	11.3.4		
Fuel filter	11.3.5		
Replacing the filter cartridge	11.3.5		
Bleeding the fuel system	11.3.6		
Checking engine oil level	11.3.6		
Engine oil change	11.3.6		
Draining the old oil	11.3.7		
Oil filter	11.3.8		
Filling in engine oil	11.3.8		
Cooling system	11.4.1		
Coolant	11.4.1		
Water drain plugs on the engine block	11.4.1		
Water cooler	11.4.2		
Filling the cooling system with coolant	11.4.2		
Overpressure	11.4.2		
Antifreeze / corrosion protection	11.4.3		
Warning notice	11.4.3		
Cooling water temperature	11.4.3		
Stopping the engine when overheated	11.4.3		
Radiator rotary screen	11.4.4		
Cleaning the radiator	11.4.5		
Dry-type air cleaner	11.5.1		
Warning device	11.5.1		
Cleaning the air cleaner intake screen	11.5.1		
Cleaning dry-type air cleaner	11.5.2		
Cleaning the air cleaner	11.5.2		
Safety filter cartridge	11.5.4		
Electrical equipment	11.6.1		
Battery	11.6.1		
Alternator	11.6.2		

3

General information

ROAD TRAFFIC REGULATIONS

IMPORTANT: Road traffic regulations may vary between countries. In case of discrepancies between the instructions provided by the manufacturer and the traffic regulations of the relevant countries, the traffic regulations of the countries concerned apply.

In addition to his driving licence, the operator must always carry the copy of the vehicle type approval registration issued by the Kraftfahrt-Bundesamt (the Federal Motor Vehicle Executive). A warning triangle and, on machines over 4 t permissible total weight, at least one wheel chock must always be carried on the combine.

When driving on public roads with the combine, comply with all the requirements stated under letter C in the copy of the vehicle type approval registration (§ 18 Section 5 StVZO) issued by the Kraftfahrt-Bundesamt (the Federal Motor Vehicle Executive).

On machines with exceptional width (width over the tyres), a vehicle type approval registration for individual vehicles (single expert opinion) and a special approval in accordance with § 70, Section 1, clauses 1 and 2 of the StVZO must be carried instead of the machine's General Operating Permit. Furthermore, all the requirements stated in the vehicle type approval registration for individual vehicles and in the special approval must be observed. The issue of a special approval differs from country to country. The excess width must be marked in accordance with the regulations for the marking of road vehicles with excess width (two marker boards at the front and back, protective bar, two amber flashing warning beacons).

If any part(s) of the combine is/are subsequently modified whose condition is/are prescribed or the operation of which (after being modified) could represent a hazard to other road users, then the vehicle type approval registration shall no longer be valid and application must be made for a new vehicle type approval registration. In this case the machine must be presented to the motor vehicle safety inspection authority responsible (TÜV) in order to obtain an expert opinion certificate (§ 19 section 2 STVZO).

If you are in any doubt as to whether this situation applies in your case, please contact us as manufacturers.

If a transport vehicle for front end attachments is towed behind the combine then the cable for the lighting system must be connected and the good condition of the lighting system assured.

If the combine is equipped with a maize picker head or folding cutterbar, the regulations and requirements of the machine's General Operating Permit must be observed, in particular the requirements concerning ballast weights and tyres.

Registration

As a self-propelled working machine with a maximum speed of up to 20 kph, the combine is not subject to the normal registration regulations and is not required to bear a registration plate. The machine must, however, be clearly and indelibly marked on the left-hand side with the Christian name and surname of the owner and his address.

The towing of trailers in the trailer hitch when driving on public roads is **not** permitted.

IMPORTANT

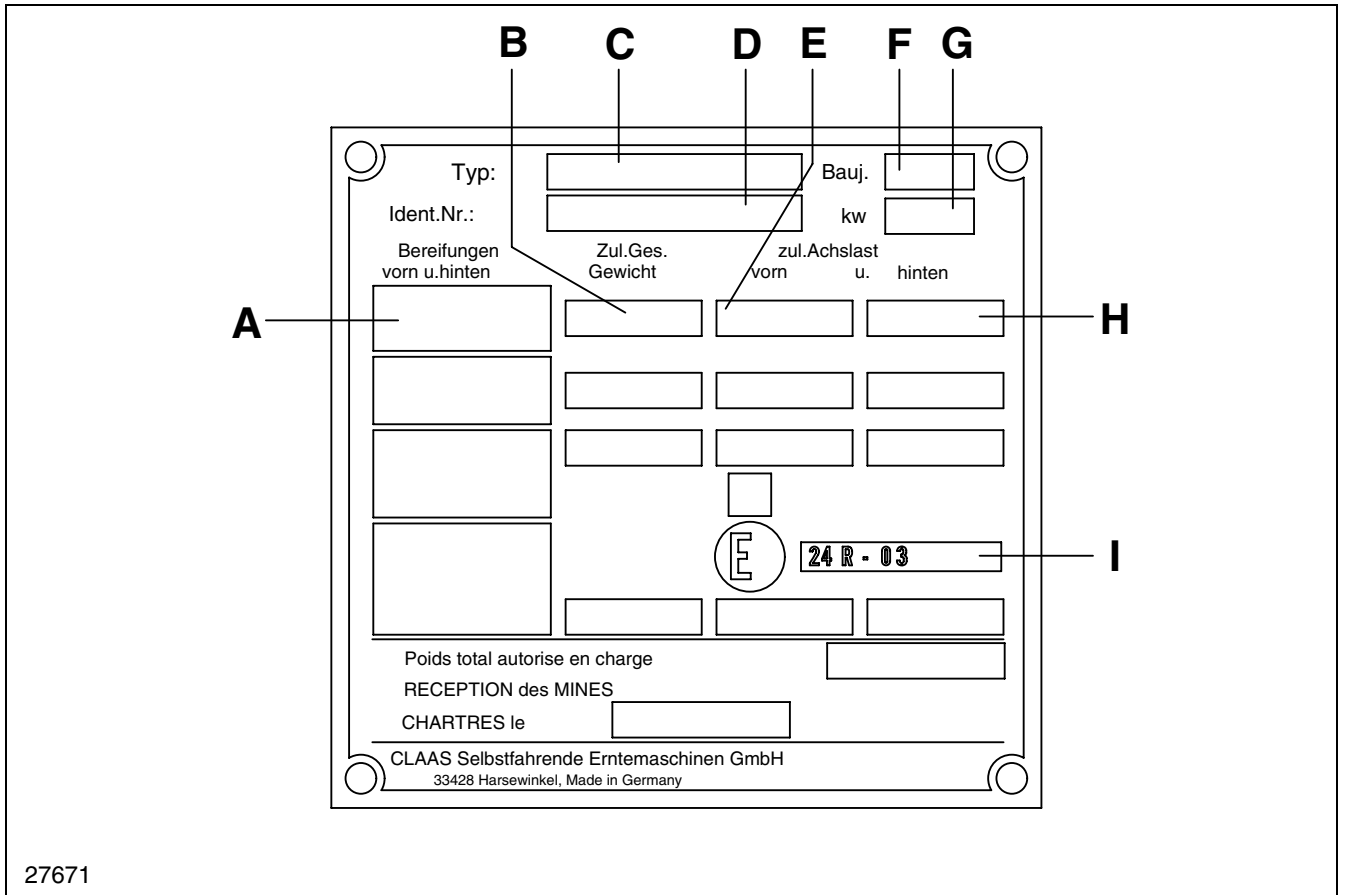
The instructions contained in this manual should be carefully read and observed by all persons who are concerned with the operation, maintenance and inspection of this machine, in order to prevent accidents. Especially the «SAFETY RULES» in this manual should be read with the utmost care and adhered to.

The use of spare parts, accessories and ancillary equipment, which are not originally manufactured by CLAAS, can change the specified design characteristics of this CLAAS machine or can detract from its functional performance, with a possible adverse affect on the active and/or passive operational safety of the machine and its occupational safety standards (accident prevention).

CLAAS are in no way liable for any damage or personal injury caused through the use of other than original or approved CLAAS parts, accessories and ancillary equipment.

Technical data, dimensions and weights are given as an indication only. CLAAS reserve the right to make changes subsequently as technical developments continue. Responsibility for errors or omissions not accepted.

IMPORTANT: Front, rear, right and left refer to the direction of forward travel.



27671

IDENTIFICATION PLATE / SERIAL NUMBER

- A = Tyres
- B = Authorized gross weight
- C = Type
- D = Identification No. (serial number of machine)
- E = Authorized front axle load
- F = Year of manufacture
- G = Rated capacity of engine (kW)
- H = Authorized rear axle load
- I = ECE-engine designation

(Fig. 1)

When ordering spare parts and requesting technical information concerning the engine, mounted implements, the cutterbar or maize picker head always specify the respective serial numbers. This is necessary to prevent incorrect spare parts deliveries.

Identification plate

The identification plate of the machine is located on the right hand side on the operator's platform.

(Fig. 2)

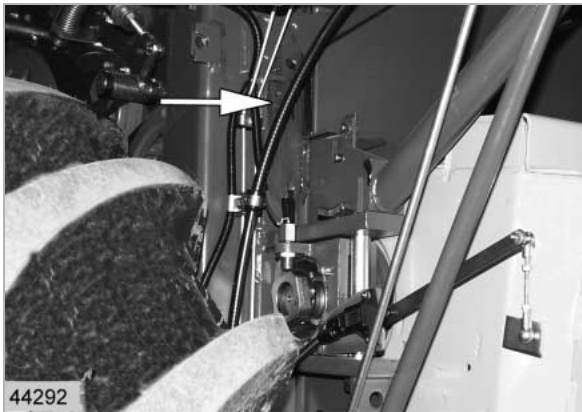


2

Combine serial number

The combine serial number is stamped on the engine frame underneath the operator's platform on the right hand side of the machine.

(Fig. 3)



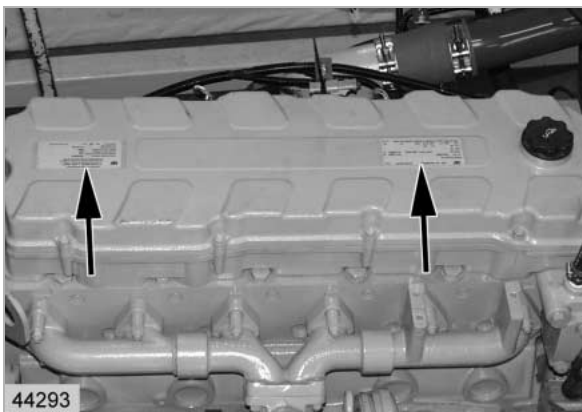
3

Engine serial number

CATERPILLAR C9

The identification plates showing the engine serial no. are attached to the valve cover.

(Fig. 4)



4



5

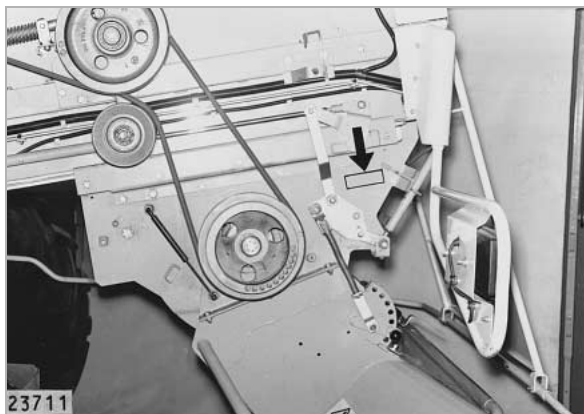
Engine serial number

CATERPILLAR 3126 B

The identification plates showing the engine serial no. are attached to the valve cover.

(Fig. 5)

hydraulic



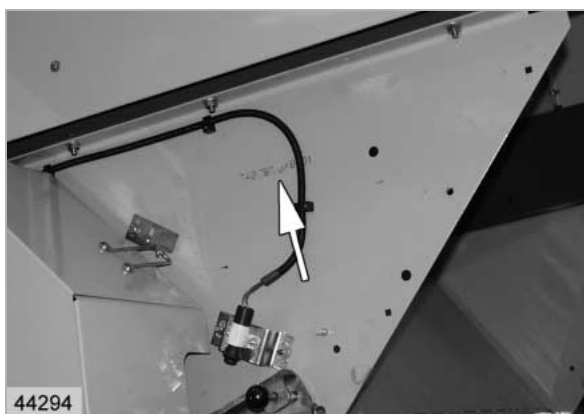
6

Straw chopper identification plate

The chopper serial number is stamped on the left hand side panel.

(Fig. 6, 7)

mechanic



7

Cabin serial number

The cabin serial number is located at the top of the left hand side, at the rear of the frame.

(Fig. 8)



8

Thank you so much for reading.
Please click the “Buy Now!”
button below to download the
complete manual.



After you pay.

You can download the most
perfect and complete manual in
the world immediately.

Our support email:

ebooklibonline@outlook.com