

CLAAS



LEXION 580
LEXION 570 / 570 C

Operator's Manual

SERVICE & PARTS

Contents

1 Introduction

1.1 General Information **25**
 1.1.1 How to use this manual 25
 1.1.2 Validity of Operator's manual 27

2 General Information

2.1 Road traffic **28**
2.2 Important notice **30**
2.3 Identification plate / Serial number **31**
 2.3.1 Identification plate / Serial number 31
 2.3.2 Identification plate 32
 2.3.3 Machine serial number 32
 2.3.4 Engine serial number 32
 2.3.5 Straw chopper identification plate 33
 2.3.6 Cab serial number 34
2.4 Attachment parts / machine body **35**
 2.4.1 Access to the workplace and maintenance areas 35

3 Safety Rules

3.1 Safety rules **38**
 3.1.1 General information 38
 3.1.2 Identification of warning and danger signs 38
 3.1.3 Intended use 39
 3.1.4 Reasonable foreseeable misuse 40
 3.1.5 General safety and accident prevention regulations 40
 3.1.6 Transporting passengers, instructor, operating personnel 41
 3.1.7 Driving operations 41
 3.1.8 Automotive operation of combine harvester 42
 3.1.9 Leaving the combine harvester 42
 3.1.10 Front attachments (cutterbar etc.) and other components 42
 3.1.11 Air conditioner 43
 3.1.12 Maintenance 43
 3.1.13 Basic rule 43
 3.1.14 Accumulators 43
 3.1.15 Decommissioning and disposal 44
 3.1.16 Cylinder safety lock 44
 3.1.17 Fire extinguisher 45
 3.1.18 Battery isolating switch 46
 3.1.19 Wheel chocks 46
 3.1.20 Jack up the machine 47
 3.1.21 Loading and tying down the machine 47
 3.1.22 Hydraulic system 48
 3.1.23 Danger of injury due to escaping hydraulic liquid 49
 3.1.24 Accumulators 49
 3.1.25 Relieving the concave adjustment accumulator 50
3.2 Safety decals with pictorials **51**
 3.2.1 General instructions for warning signs 51

3.2.2 Safety decals 52

4 Specifications

4.1 CLAAS LEXION 580 84

4.1.1 Cab / Operator's platform 84

4.1.2 Cutterbar 84

4.1.3 Threshing mechanism 85

4.1.4 Separation 85

4.1.5 Cleaning (Standard cleaning system) 86

4.1.6 Grain delivery 86

4.1.7 Engine 87

4.1.8 Chassis 88

4.1.9 Tyres and tyre pressures 89

4.1.10 Torque settings of wheel bolts 89

4.1.11 Track width 90

4.1.12 Transport position / Working position 93

4.1.13 Weights 96

4.1.14 Safety features 96

4.2 CLAAS LEXION 570 / 570 C 97

4.2.1 Cab / Operator's platform 97

4.2.2 Cutterbar 97

4.2.3 Threshing mechanism 98

4.2.4 Separation 98

4.2.5 Cleaning (Standard cleaning system) 98

4.2.6 Cleaning (JET STREAM cleaning system) 99

4.2.7 Grain delivery 99

4.2.8 Engine 100

4.2.9 Chassis 101

4.2.10 Tyres and tyre pressures 102

4.2.11 Torque settings of wheel bolts 103

4.2.12 Track width 104

4.2.13 Transport position / Working position 107

4.2.14 Weights 110

4.2.15 Safety features 110

5 Prior to operation

5.1 General Information 111

5.1.1 Initial operation check list 111

5.1.2 Loading and tying down the machine 112

5.2 Cab 114

5.2.1 Cab with automatic air conditioner 114

5.2.2 Automatic air conditioner 116

5.2.3 Putting the automatic air conditioner into operation 117

5.2.4 Setting the cab temperature 118

5.2.5 Manually setting the evaporator blower speed 118

5.2.6 Activating ECON operating mode 119

5.2.7 Deactivating ECON operating mode 119

5.2.8 REHEAT operation (Dehumidify cab windows) 120

5.2.9	Displaying the outside temperature	121
5.2.10	Changing the temperature display to °Fahrenheit	121
5.2.11	Floor heating	121
5.2.12	Display of malfunction - Error in thermometer F0 (cab, blue)	122
5.2.13	Display of malfunction - Error in thermometer F1 (exhaust, yellow)	122
5.2.14	Display of malfunction - Error in thermometer F2 (outside, red)	122
5.2.15	Cab with air conditioner (Standard version)	123
5.2.16	Putting the air conditioning system into operation	125
5.2.17	Heater	126
5.2.18	Floor heating	126
5.2.19	REHEAT operation (Dehumidify cab windows)	127
5.2.20	Problem, possible cause or remedy – air conditioner system	128
5.2.21	Cooling box	130
5.2.22	Cooling unit (option)	130
5.2.23	Cooling bag (option)	130
5.2.24	Ice bucket (option)	131
5.2.25	Windscreen washer	131
5.2.26	Crop inspection	131
5.2.27	Opening and closing the cab roof	132
5.2.28	Cab emergency exit	132
5.2.29	Operator's platform overview	133
5.2.30	Control console	135
5.2.31	Screen (harvest display)	138
5.2.32	Screen (vehicle information display)	140
5.2.33	Keys C / Rotary switch D	142
5.2.34	Ignition switch	143
5.2.35	Multifunction switch	144
5.2.36	Vehicle information unit	145
5.2.37	Multifunction handle	146
5.2.38	Reel height limitation	147
5.2.39	Steering column adjustment	147
5.2.40	Steering wheel height adjustment	148
5.2.41	Central terminal compartment	149
5.2.42	Contents – Central terminal compartment (up to serial no. ...)	150
5.2.43	Fuses (up to serial no. ...)	151
5.2.44	Relays (up to serial no. ...)	153
5.2.45	Contents – Central terminal compartment (from serial no. ...)	156
5.2.46	Fuses (from serial no. ...)	157
5.2.47	Relays (from serial no. ...)	159
5.2.48	Operator's seat	162
5.2.49	Operator's seat, mechanical	162
5.2.50	Air-suspended driver's seat	164
5.3	Lighting and socket outlets	167
5.3.1	Headlights, working lights, mirrors	167
5.3.2	Sidelfinder (option)	173
5.3.3	Pathfinder lighting	173
5.3.4	Side position lights in case of excess width	174

5.3.5	Socket outlet 12 V	176
5.3.6	CDS 5000 diagnosis connection socket outlet	178
5.4	Access ladder	179
5.4.1	Access and ladder extension	179
5.4.2	Pre-assembling the front ladder (from serial no. ...)	184
5.4.3	Installing the front ladder	184
5.4.4	Swivelling the front ladder (up to serial no. ...)	187
5.4.5	Swivelling the front ladder (from serial no. ...)	188
5.4.6	Ladder starting protection	190
5.4.7	Rear ladder	191
5.5	Side panels	193
5.5.1	Opening and closing the side panels and the tailgate	193
5.5.2	Opening the tailgate	194
5.5.3	Adjusting the gripping height of the side panels	195
5.5.4	Adjusting the side panel lock	196
5.5.5	Tool cabinet	196
5.6	Mud guards / Side panels / Hitch block / Transport trailer	198
5.6.1	Installing the mudguards	198
5.6.2	Adapting the side panels (Rice harvesting machines)	199
5.6.3	Fitting the hitch block	199
5.7	Rear axles (Standard cleaning system)	200
5.7.1	Overview of rear axle	200
5.7.2	Rear drive axle 000 660 287 0	200
5.7.3	Rear drive axle 000 694 760 1	201
5.7.4	Rear drive axle 000 669 835 6	201
5.7.5	Rear axle 000 770 920 1	201
5.7.6	Rear axle 000 768 705 1	202
5.7.7	Rear axle 000 769 610 3	202
5.7.8	Converting the rear drive axle from transport to working position	202
5.7.9	Rear drive axle - Adjusting the track width	203
5.7.10	Rear drive axle 000 694 760 1 - Adjusting the steering stop	207
5.7.11	Converting the rear axle 000 770 920 1 / 000 768 705 1 from transport to working position	208
5.7.12	Converting the rear axle 000 769 610 3 from transport to working position	210
5.8	Rear axles (JET STREAM cleaning system)	211
5.8.1	Overview of rear axle	211
5.8.2	Rear axle 000 769 155 1	211
5.8.3	Rear axle 000 769 100 1	212
5.8.4	Rear drive axle 000 694 900 2	212
5.8.5	Rear axle 000 768 980 1	212
5.8.6	Converting the rear axle 000 769 155 1 from transport to working position	213
5.8.7	Rear axle 000 769 155 1 – Track width	217
5.8.8	Rear axle 000 769 100 1 – Track width	218
5.8.9	Converting the rear drive axle 000 694 900 2 from transport to working position	218
5.8.10	Rear drive axle 000 770 589 2 - Adjusting the track width	221
5.8.11	Adjusting the rear drive axle 000 694 900 2 to the track width	223
5.8.12	Converting the rear axle 000 768 980 1 from transport to working position	224
5.8.13	Rear axle 000 768 980 1 – Adjusting the track width	227

5.9 Additional weights of rear axle	229
5.9.1 Additional rear axle weights LEXION 580 Standard cleaning system	229
5.9.2 Additional rear axle weights LEXION 570 Standard cleaning system	230
5.9.3 Additional rear axle weights LEXION 570 / 570 C JET STREAM cleaning system	231
5.9.4 Liquid filling of rear axle tyres	232
5.9.5 Installing the rear axle weight	232
5.9.6 Shipping package – rear axle weight (Rear drive axle)	234
5.10 Cutterbar hydraulic cylinders	235
5.10.1 Fitting the cutterbar hydraulic cylinders with springs	235
5.10.2 Number of cutterbar cylinders (LEXION 580)	235
5.10.3 Number of cutterbar cylinders (LEXION 570 / 570 C)	237
5.10.4 Installing the cutterbar floatation springs hydraulic cylinder	238
5.11 Accumulator	240
5.11.1 Filling the accumulator for CLAAS AUTO CONTOUR II	240
5.11.2 Special tool for filling the CLAAS AUTO CONTOUR II accumulator	244
5.12 Dual fitments	245
5.12.1 Installing the dual wheels	245
5.12.2 Use of front ladder when dual fitments are fitted (up to serial no.)	248
5.12.3 Use of front ladder when dual fitments are fitted (from serial no.)	249
5.13 Grain tank	251
5.13.1 Closing the grain tank drain holes	251
5.14 Driving the combine with mechanical control	252
5.14.1 Driving machine	252
5.14.2 Ground speed control lever variants	252
5.14.3 Engine speed rotary switch	253
5.14.4 Medium engine idle speed	254
5.14.5 Starting the engine	255
5.14.6 Forward travel / reverse travel	256
5.14.7 Gear selection	256
5.14.8 Setting the ground speed control lever to move easily	257
5.14.9 Setting the ground speed control lever to move easily	258
5.14.10 Stopping	258
5.14.11 Machine driving characteristics	258
5.14.12 Handling with cutterbar trailer	259
5.14.13 Steering	259
5.14.14 Coupling / decoupling brake pedals of the foot brake	259
5.14.15 Brake lining wear indicator (up to serial no.)	260
5.14.16 Parking brake	260
5.14.17 Stopping the engine	261
5.14.18 Engaging / disengaging the CLAAS 4-Trac system	261
5.14.19 Towing the machine	262
5.14.20 Forward towing	262
5.14.21 Reverse towing	262
5.14.22 EHS emergency shifting using the gear pushbutton (from serial no.)	263
5.14.23 Emergency operation decal – Electro-hydraulic gearshift (EHS)	265
5.14.24 Engaging the neutral gearbox position mechanically	266
5.14.25 Restoring the original state (gearbox can again be shifted electro-hydraulically)	267
5.14.26 Engaging the neutral gearbox position hydraulically	270

5.14.27 Engaging the 2nd gear hydraulically	271
5.15 CLAAS Autopilot (Maize picker)	272
5.15.1 Putting the CLAAS Autopilot into operation	272
5.16 CLAAS Autopilot (Grain cutterbar)	274
5.16.1 Adjusting the directional stability of the combine harvester	274
5.16.2 Setting the laser sensor in the field	276
5.16.3 Rough adjustment	277
5.16.4 Fine adjustment	277
5.16.5 Laser sensor (crop edge has moved out of visible range)	278
5.16.6 Adjusting the right laser sensor (accessory)	279
5.16.7 Putting the CLAAS Autopilot into operation	280
5.16.8 Use in rape with left side cutter	281
5.17 Information about hitching / unhitching trailers	282
5.17.1 General information	282
5.17.2 General safety instructions	282
5.17.3 Hitching the trailer	283
5.17.4 Unhitching the trailer	284

6 Installing and removing the cutterbar

6.1 Installing the cutterbar	286
6.1.1 Tilting the cutterbar from transport position	286
6.1.2 Adjusting the cutterbar cross levelling hydraulic cylinder (up to serial no. ...)	287
6.1.3 Adjusting the cutterbar cross levelling hydraulic cylinder (from serial no. ...)	288
6.1.4 Attaching the front attachment	288
6.1.5 Locking cutterbars and maize pickers (Cutterbars without Auto Contour)	290
6.1.6 Connecting the universal drive shaft	291
6.1.7 Mounting the stands	292
6.2 Removing the cutterbar	293
6.2.1 Removing the universal coupling	293
6.2.2 Removing the universal drive shaft	294
6.2.3 Opening the cutterbar locking	294
6.2.4 Laying down the cutterbar on the ground	295
6.2.5 Placing the cutterbar on the cutterbar trailer	295

7 CEBIS operation (Version 8.23)

7.1 CLAAS CEBIS on-board information system	298
7.2 CEBIS monitor and rotary switch	299
7.2.1 C keys	299
7.2.2 Rotary switch D	299
7.2.3 Flagging Box	300
7.2.4 Multifunction handle	300
7.2.5 Monitor areas E (Harvest display)	301
7.3 Rotary switch D	305
7.4 Prior to initial operation	307
7.5 Vehicle information display	308
7.6 Harvest display	309
7.7 Montana control system	310
7.7.1 Axle control mode	310
7.7.2 Cutting angle control	310

7.7.3	Lateral levelling control	311
7.7.4	Montana axle end stops	311
7.7.5	Cutting angle limits	311
7.7.6	Lateral levelling limits	312
7.7.7	Display period	312
7.8	CLAAS CRUISE PILOT	313
7.8.1	Maximum ground speed	313
7.8.2	Zero throughput	313
7.9	Yield mapping	314
7.10	Flagging	316
7.11	GPS	317
7.11.1	Mapping ON/OFF	317
7.11.2	Mapping monitor	317
7.11.3	Load GPS data	318
7.12	Preset reel values	319
7.12.1	Horizontal reel position	319
7.12.2	Reel speed	319
7.12.3	Reel height	320
7.13	Preset front attachment values	321
7.13.1	Snapping plate clearance	321
7.13.2	Cutterbar table length	321
7.13.3	CAC settings	322
7.13.4	CAC setting for LEXION Montana	323
7.14	Partial width selection	324
7.15	Yield meter	325
7.15.1	Components	325
7.15.2	Basic settings and calibration	326
7.15.3	Preparations for yield measuring	326
7.15.4	Moisture measurement ON/OFF, Moisture correction, Storage moisture	328
7.15.5	A quick way to obtain reasonable measuring data	328
7.16	Yield measuring	329
7.16.1	Calibration factor	329
7.16.2	Yield zero point measuring	329
7.16.3	Test-weighing	330
7.16.4	Weight measured	330
7.16.5	Moisture correction	330
7.16.6	Moisture measurement ON/OFF	331
7.16.7	Zero angle	331
7.16.8	Storage moisture	331
7.16.9	Display dry yield	332
7.17	Crop-dependent settings	333
7.17.1	List of crops	333
7.17.2	Cleaning by blowing	335
7.18	Recording	336
7.18.1	Planned records	336
7.18.2	Start / Stop	338
7.18.3	Completed records	338
7.18.4	Daily recorder	340

7.18.5	Total recorder	341
7.18.6	Crop recorder	341
7.18.7	Copying the chip card	342
7.19	Adjustments	343
7.19.1	Cutterbar	343
7.19.2	Speeds	348
7.19.3	Tachometer	350
7.19.4	Separation	353
7.19.5	CEBIS	354
7.19.6	Maintenance	359
7.19.7	Operator's manual	360
7.19.8	Code protection	364
7.20	Engine loading	365
7.20.1	Engine diagnosis	365
7.21	Alarms	366
7.22	Messages	367
7.23	Fault / Remedy - Yield meter	368
7.24	Guideline values for pulses/100 m	370

8 Operation – Basic machine

8.1	HP feed rake conveyor	371
8.1.1	Adjusting the height of feeder chains	371
8.1.2	Adjusting the cutting angle of the HP feed rake conveyor (option) to its basic adjustment	371
8.1.3	Adjusting the cutting angle of the HP feed rake conveyor (optional equipment)	374
8.1.4	Front attachment reverser	376
8.1.5	Cutting height indicator	376
8.1.6	Setting the drop rate of the front attachment	377
8.1.7	Engaging the front attachment	378
8.1.8	Disengaging the front attachment on the switch console	378
8.1.9	Disengaging the front attachment on the multifunction handle	379
8.1.10	Adjusting the feeder chain speeds with the front attachment step drive, step 2 (optional equipment)	380
8.2	Standard feed rake conveyor	384
8.2.1	Adjusting the height of feeder chains	384
8.2.2	Feeder chain safety feature	385
8.2.3	Front attachment reverser	385
8.2.4	Checking the setting of the cutterbar floatation springs	386
8.2.5	Cutting height indicator	387
8.2.6	Spring pressure indicator	387
8.2.7	Blocking the front attachment floatation springs (Hydraulic lock)	388
8.2.8	Unlocking the front attachment floatation springs (Hydraulic lock)	388
8.2.9	Blocking the front attachment floatation springs (Mechanical blocking)	388
8.2.10	Unlocking the front attachment floatation springs (Mechanical blocking)	389
8.2.11	Setting the drop rate of the front attachment	389
8.2.12	Engaging the front attachment (switch console, up to serial no. ...)	389
8.2.13	Engaging the front attachment (switch console, from serial no. ...)	390
8.2.14	Disengaging the front attachment on the switch console	391

8.2.15	Disengaging the front attachment on the multifunction handle	391
8.2.16	Adjusting the feeder chain speeds with the front attachment step drive, step 2 (optional equipment)	392
8.3	Threshing mechanism	396
8.3.1	Stone trap (large stone trap)	396
8.3.2	Engaging the threshing mechanism	397
8.3.3	Disengaging the threshing mechanism	398
8.3.4	Threshing drum	398
8.3.5	Cleaning the threshing mechanism	398
8.3.6	Concave setting	399
8.3.7	Central concave readjustment	399
8.3.8	Readjusting the left concave	400
8.3.9	Adjusting the oil pressure of the concave adjustment accumulators	401
8.3.10	Basic concave setting	401
8.3.11	Designations and dimensions for grain concave / maize concave	408
8.3.12	Designations and measures for spike tooth concave	410
8.3.13	Adjusting the concave position sensor	412
8.3.14	Threshing drum speed	413
8.3.15	Drum drives	413
8.3.16	Two-step variable-speed drive	413
8.3.17	Removing and installing the preconconcave segments (large stone trap)	414
8.3.18	Concave segment	415
8.3.19	Removing a concave segment (large stone trap)	416
8.3.20	Installing the concave segment (large stone trap)	417
8.3.21	Disawner plates	418
8.3.22	Unslugging the threshing drum	418
8.4	Grain rotor	419
8.4.1	Axial rotors	419
8.4.2	Axial rotors variable-speed drive (option)	419
8.4.3	Axial rotors step drive	420
8.4.4	Grain rotors speed table	421
8.4.5	Installing and removing the separating grates	422
8.4.6	Removing the separating grates	422
8.4.7	Installing the separating grates	425
8.4.8	Axial rotors straw blockage warning signal	426
8.4.9	Rotors performance monitor	426
8.4.10	Rotor sensors	426
8.4.11	Covering up the separating jackets	427
8.4.12	Separating jackets – Shipping package	428
8.5	Universal rotor	429
8.5.1	Axial rotors	429
8.5.2	Axial rotors variable-speed drive (option)	429
8.5.3	Axial rotors step drive	430
8.5.4	Universal rotors speed table	431
8.5.5	Closing the separating grates	431
8.5.6	Replacing separating grates by dummy concaves (option)	432
8.5.7	Closing the separating grates electrically with flaps (option)	432

8.5.8	Removing and installing the dummy concaves / separating grates	432
8.5.9	Removing the dummy concaves / separating grates	433
8.5.10	Installing the dummy concaves / separating grates	436
8.5.11	Axial rotor straw blockage warning signal	436
8.5.12	Rotors performance monitor	437
8.5.13	Rotor sensors	437
8.6	Cleaning (Standard cleaning system)	438
8.6.1	Cleaning unit	438
8.6.2	Preparation floor	439
8.6.3	Frogmouth sieves	439
8.6.4	Electric sieve adjustment	439
8.6.5	Removing the sieves	440
8.6.6	Installing the sieves	443
8.6.7	Tightening torques of axial mountings for the upper and lower sieves	444
8.6.8	Sieves – Basic adjustment	445
8.6.9	Harvesting without lower sieves	445
8.6.10	Covering the returns pan	446
8.6.11	Cleaning fan	446
8.6.12	Adjusting the fan speed adjustment	446
8.6.13	Under-ventilated cleaning step	447
8.6.14	Adjusting the pre-separation deflector	447
8.6.15	Wind board	448
8.6.16	Fan shutters for threshing grass seed and similar crops (accessory)	448
8.6.17	3-D cleaning system	449
8.6.18	Returns	450
8.6.19	Inspecting the returns	450
8.6.20	Upper sieve performance monitor	451
8.6.21	Sieve pan sensor	451
8.7	Cleaning (JET STREAM cleaning system)	452
8.7.1	Cleaning unit	452
8.7.2	Preparation floor	453
8.7.3	Frogmouth sieves	453
8.7.4	Electric sieve adjustment	453
8.7.5	Removing the sieves	454
8.7.6	Installing the sieves	456
8.7.7	Tightening torques of axial mountings for the upper and lower sieves	457
8.7.8	Sieves – Basic adjustment	457
8.7.9	Harvesting without lower sieves	458
8.7.10	Covering up the return pan (accessory for maize)	459
8.7.11	Cleaning fan	459
8.7.12	Adjusting the fan speed adjustment	460
8.7.13	Fitting the fan speed adjustment for grass seed threshing	460
8.7.14	Under-ventilated cleaning step	463
8.7.15	3-D cleaning system	463
8.7.16	Returns	464
8.7.17	Inspecting the returns	465
8.7.18	Upper sieve performance monitor	465

8.7.19 Sieve pan sensor	465
8.8 Grain delivery	467
8.8.1 Augers and auger troughs	467
8.8.2 Elevators	467
8.8.3 Grain tank	468
8.8.4 Grain tank extension	469
8.8.5 Unloading the grain tank	470
8.8.6 Emergency unloading grain tank cover	470
8.8.7 Grain tank unloading aid (accessory)	471
8.8.8 Grain tank unloading tube	471
8.8.9 Swinging the grain tank unloading tube out and in	472
8.8.10 Grain tank unloading tube transport position	473
8.8.11 Cleaning covers on the grain tank unloading tube	474
8.8.12 Shear bolt for grain tank unloading	474
8.8.13 Engaging and disengaging grain tank unloading	475
8.8.14 Grain tank access	476
8.8.15 Automatic chain lubrication – grain tank unloading (accessory)	477
8.8.16 Grain tank fill indicator	477
8.9 Straw chopper with uni-spreader	478
8.9.1 Straw chopper	478
8.9.2 Checks prior to putting the straw chopper with uni-spreader into operation	478
8.9.3 Straw chopper with uni-spreader - Chopping	479
8.9.4 Straw chopper with uni-spreader - Swathing	479
8.9.5 Swinging the uni-spreader to working position	480
8.9.6 Putting the straw chopper with uni-spreader into operation	481
8.9.7 Shut down the straw chopper with the uni-spreader and convert it to swathing	482
8.9.8 Swinging the uni-spreader to the cutterbar trailer transport position	484
8.9.9 Adjusting the cross knife (straw chopper with uni-spreader)	485
8.9.10 Adjusting the length of cut (straw chopper with uni-spreader)	486
8.9.11 Adjusting the uni-spreader spreading width to the front attachment	487
8.9.12 Adjusting the spreading width of the uni-spreader	489
8.9.13 Adjusting the spreading width centralising of the uni-spreader	490
8.9.14 Adjusting the angle of throw of the outlet spouts	490
8.9.15 Reducing the chopper speed	490
8.9.16 Uni-spreader feed pan (grain, maize)	492
8.10 Rice straw chopper with standard spreader	495
8.10.1 Straw chopper	495
8.10.2 Checks prior to putting the rice straw chopper with standard spreader into operation	495
8.10.3 Rice straw chopper with standard spreader	496
8.10.4 Putting the rice straw chopper into operation (swinging standard spreader to chopping position)	496
8.10.5 Putting the rice straw chopper out of operation (swinging standard spreader to swathing position)	497
8.10.6 Swinging the standard spreader to cutterbar trailer transport position	499
8.10.7 Adjusting the cross knife (rice straw chopper with standard spreader)	500
8.10.8 Adjusting the length of cut (rice straw chopper with standard spreader)	501
8.10.9 Adjusting the standard spreader spreading width (up to serial no. ...)	502

8.10.10	Adjusting the standard spreader spreading width (from serial no. ...)	503
8.10.11	Adjusting the height of standard spreader	504
8.10.12	Adjusting the spreading width centralising switch of standard spreader	505
8.10.13	Reducing the chopper speed	505
8.11	Straw chopper with radial spreader	508
8.11.1	Straw chopper	508
8.11.2	Checks prior to putting the straw chopper with radial spreader into operation	508
8.11.3	Putting the straw chopper into operation (swinging the radial spreader to chopping position)	509
8.11.4	Putting the straw chopper out of operation (swinging the radial spreader to swathing position)	510
8.11.5	Swinging the radial spreader to cutterbar trailer transport position	511
8.11.6	Adjusting the cross knife (straw chopper with radial spreader)	512
8.11.7	Adjusting the length of cut (straw chopper with radial spreader)	513
8.11.8	Activating the rasp bar (accessory) (straw chopper with radial spreader)	514
8.11.9	Adjusting the spreading width of radial spreader	515
8.11.10	Adjusting the spreading width centralising switch of radial spreader	516
8.11.11	Converting the radial spreader (spreader disc) to grain	517
8.11.12	Converting the radial spreader (spreader disc) to maize	518
8.11.13	Reducing the chopper speed	519
8.12	Straw chopper with standard spreader	521
8.12.1	Straw chopper	521
8.12.2	Checks prior to putting the straw chopper with standard spreader into operation	521
8.12.3	Straw chopper with standard spreader	522
8.12.4	Putting the straw chopper into operation (swinging the standard spreader to chopping position)	522
8.12.5	Putting the straw chopper out of operation (swinging the standard spreader to swathing position)	523
8.12.6	Swinging the standard spreader to cutterbar trailer transport position	525
8.12.7	Adjusting the cross knife (straw chopper with standard spreader)	526
8.12.8	Adjusting the length of cut (straw chopper with standard spreader)	527
8.12.9	Activating the rasp bar (accessory) (straw chopper with standard spreader)	528
8.12.10	Adjusting the standard spreader spreading width (up to serial no. ...)	529
8.12.11	Adjusting the standard spreader spreading width (from serial no. ...)	530
8.12.12	Adjusting the height of standard spreader	531
8.12.13	Adjusting the spreading width centralising switch of standard spreader	532
8.12.14	Reducing the chopper speed	532
8.13	Chaff spreader (up to serial no. ...)	535
8.13.1	Chaff spreader (up to serial no. ...)	535
8.13.2	Adjusting the spreading width of chaff spreader	535
8.13.3	Folding the chaff spreader open	535
8.13.4	Folding in the chaff spreader (working position)	536
8.14	Chaff spreader (from serial no. ...)	538
8.14.1	Chaff spreader (from serial no. ...)	538
8.14.2	Adjusting the spreading width of chaff spreader	538
8.14.3	Swinging the chaff spreader to the rear	538
8.14.4	Swinging the chaff spreader to the front	539
8.14.5	Removing the chaff spreader feed pan	540

8.14.6	Installing the chaff spreader feed pan	540
8.14.7	Grain / maize chaff spreader	540
8.15	Uni-spreader	541
8.15.1	Uni-spreader	541
8.15.2	Swinging the uni-spreader to the rear	541
8.15.3	Swinging the uni-spreader to the front	542
8.15.4	Removing the uni-spreader feed pan	542
8.15.5	Installing the uni-spreader feed pan	543
8.15.6	Converting the uni-spreader to grain	543
8.15.7	Converting the uni-spreader to maize	544
8.16	Straw spreader	545
8.16.1	Straw spreader	545
8.16.2	Adjusting the spreading width	545
8.16.3	Fitting the spreader blades	545
8.17	LEXION 580 sieve charts and suggested combine adjustments (standard cleaning system)	546
8.17.1	LEXION 580 sieve chart (standard cleaning system)	546
8.17.2	LEXION 580 suggested combine adjustments (standard cleaning system)	547
8.18	LEXION 570 / 570 Montana sieve charts and suggested combine adjustments (standard cleaning system)	553
8.18.1	LEXION 570 / 570 Montana sieve chart (standard cleaning system)	553
8.18.2	LEXION 570 / 570 Montana suggested combine adjustments (standard cleaning system)	554
8.19	LEXION 570 / 570 C / 570 Montana sieve charts and suggested combine adjustments (JET STREAM cleaning system)	559
8.19.1	LEXION 570 / 570 C / 570 Montana sieve charts (JET STREAM cleaning system)	559
8.19.2	LEXION 570 / 570 C / 570 Montana suggested combine adjustments	560
8.20	Disawning	565
8.20.1	Disawner plates	565
8.20.2	Concave segment	566
8.20.3	Rotor cover plates	567
8.21	Problem, cause and / or remedy – Basic machine	568
8.21.1	Front attachment	568
8.21.2	Threshing mechanism	569
8.21.3	Cleaning unit	570
8.21.4	Grain delivery	572
8.21.5	Straw / Putting down the material	573

9 Maintenance – Basic machine

9.1	Important maintenance instructions	574
9.1.1	Important maintenance instructions and safety rules	574
9.1.2	Front attachment	574
9.1.3	Correct tension of steel roller chains	574
9.1.4	Belts	574
9.1.5	Variable-speed drives	575
9.1.6	Bolts	575
9.1.7	Lubrication	575
9.1.8	Brakes	576

9.1.9	Wheels / tyres	577
9.1.10	Hydraulic system	578
9.1.11	Cleanliness of lubricants	578
9.1.12	Electrical system	579
9.1.13	Air conditioner	580
9.1.14	Safety guards / spare parts	581
9.1.15	Unbalance	581
9.1.16	Welding work (up to serial no. ...)	582
9.1.17	Welding work (from serial no. ...)	583
9.2	Maintenance schedules	585
9.2.1	Basic machine maintenance schedule	585
9.3	Lubricants charts	589
9.3.1	Lubricants	589
9.4	Hydraulic system	593
9.4.1	Accumulators	593
9.4.2	Checking the oil level	593
9.4.3	Hydraulic oil change	594
9.4.4	Changing the hydraulic oil filter	595
9.4.5	Saturation of hydraulic oil filter (from serial no. ...)	595
9.4.6	Replacing the return filter (up to serial no. ...)	596
9.4.7	Replacing the return filter (from serial no. ... up to serial no. ...)	597
9.4.8	Replacing the return filter (from serial no. ...)	597
9.4.9	Filling instructions when replacing the hydraulic oil (Sauer 90 R 130 / 90 M 100)	598
9.4.10	Bleeding the cutterbar cross-levelling hydraulic cylinder (machines with Auto Contour) (up to serial no. ...)	599
9.4.11	Bleeding the cutterbar cross-levelling hydraulic cylinder (machines with Auto Contour) (from serial no. ...)	601
9.5	Transmission / Brakes	603
9.5.1	Manual gearbox	603
9.5.2	Final drive (2-step)	604
9.5.3	Final drives (1-step)	605
9.5.4	Final drive gearbox (planetary gear)	606
9.5.5	10 t rear axle with JET STREAM cleaning system	606
9.5.6	Threshing drum reduction gearbox	607
9.5.7	Engine output transfer gearbox	608
9.5.8	Grain tank unloading gearbox	609
9.5.9	Rotor gearbox (up to serial no. ...)	609
9.5.10	Rotor gearbox (from serial no. ...)	610
9.5.11	Uni-spreader gearbox (LEXION 580, straw chopper)	611
9.5.12	Foot brake and brake fluid	611
9.5.13	Parking brake	612
9.6	HP feed rake conveyor	613
9.6.1	Tensioning the feeder chains	613
9.6.2	Cleaning the suction blower (accessory)	614
9.7	Standard feed rake conveyor	615
9.7.1	Tensioning the feeder chains	615
9.7.2	Cleaning the suction blower (accessory)	616

9.8 Separation	617
9.8.1 Cleaning the separating grates flaps linkage	617
9.9 Elevator chains	618
9.9.1 Tensioning the grain elevator chain (machine without yield meter)	618
9.9.2 Tensioning the grain elevator chain (machine with yield meter / without cock)	619
9.9.3 Tensioning the grain elevator chain (machine with yield meter / with cock)	619
9.9.4 Relieving the tension of the grain elevator chain (machine with yield meter)	620
9.9.5 Tensioning the returns elevator chain	621
9.10 Drive belts / drive chains	622
9.10.1 General Information	622
9.10.2 Left drive diagram (LEXION 580 with standard cleaning system)	623
9.10.3 Right drive diagram (LEXION 580 with standard cleaning system)	625
9.10.4 Left drive diagram (LEXION 570 with standard cleaning system)	627
9.10.5 Right drive diagram (LEXION 570 with standard cleaning system)	629
9.10.6 Drive diagram, left side (LEXION 570 with JET STREAM cleaning system)	631
9.10.7 Drive diagram, right side (LEXION 570 with JET STREAM cleaning system)	633
9.10.8 Removing the belt (1)	635
9.10.9 Installing the belt (1)	635
9.10.10 Removing the belt (2)	636
9.10.11 Installing the belt (2)	638
9.10.12 Removing the belt (3)	639
9.10.13 Installing the belt (3)	640
9.10.14 Removing the belt (4)	642
9.10.15 Installing the belt (4)	644
9.10.16 Removing the belt (5)	645
9.10.17 Installing the belt (5)	647
9.10.18 Removing belt (6) (without torque support)	648
9.10.19 Installing belt (6) (without torque support)	649
9.10.20 Removing belt (6) (with torque support)	650
9.10.21 Installing belt (6) (with torque support)	651
9.10.22 Removing the belt (7)	652
9.10.23 Installing the belt (7)	655
9.10.24 Removing the belt (8)	657
9.10.25 Installing the belt (8)	658
9.10.26 Removing the belt (9)	659
9.10.27 Installing the belt (9)	662
9.10.28 Removing the belt (10)	664
9.10.29 Installing the belt (10)	665
9.10.30 Removing the chain (11)	667
9.10.31 Installing the chain (11)	668
9.10.32 Removing the belt (12)	669
9.10.33 Installing the belt (12)	670
9.10.34 Removing the belt (13)	672
9.10.35 Installing the belt (13)	673
9.10.36 Removing the belt (14)	674
9.10.37 Installing the belt (14)	675
9.10.38 Removing the belt (15)	676

9.10.39	Installing the belt (15)	677
9.10.40	Removing the belt (16)	678
9.10.41	Installing the belt (16)	679
9.10.42	Removing the belt (17)	680
9.10.43	Installing the belt (17)	681
9.10.44	Removing the belt (18)	683
9.10.45	Installing the belt (18)	685
9.10.46	Removing the belt (19)	686
9.10.47	Installing the belt (19)	687
9.10.48	Removing the belt (20)	689
9.10.49	Installing the belt (20)	691
9.10.50	Removing belt (21) (up to serial no. ...)	693
9.10.51	Installing belt (21) (up to serial no. ...)	695
9.10.52	Removing the belt (21) (from serial no. ...)	696
9.10.53	Installing belt (21) (from serial no. ...)	698
9.10.54	Removing the belt (23)	699
9.10.55	Installing the belt (23)	700
9.10.56	Removing the belt (24)	701
9.10.57	Installing the belt (24)	702
9.10.58	Removing the belt (25)	702
9.10.59	Installing the belt (25)	704
9.10.60	Removing the belt (26)	707
9.10.61	Installing the belt (26)	709
9.10.62	Removing the belt (40)	711
9.10.63	Installing the belt (40)	712
9.10.64	Removing the belt (41)	713
9.10.65	Installing the belt (41)	714
9.10.66	Removing the belt (42)	716
9.10.67	Installing the belt (42)	717
9.10.68	Removing the belt (46)	718
9.10.69	Installing the belt (46)	719
9.10.70	Removing belt (R47)	720
9.10.71	Installing belt (R47)	721
9.10.72	Adjusting belt (R47)	722
9.10.73	Removing the belt (48)	723
9.10.74	Installing the belt (48)	724
9.10.75	Removing the belt (49)	725
9.10.76	Installing the belt (49)	726
9.10.77	Removing the belt (50)	727
9.10.78	Installing the belt (50)	729
9.10.79	Removing the belt (51)	730
9.10.80	Installing the belt (51)	731
9.10.81	Removing the belt (52)	732
9.10.82	Installing the belt (52)	733
9.10.83	Removing the belt (53)	735
9.10.84	Installing the belt (53)	737
9.10.85	Removing the belt (54)	738

9.10.86	Installing the belt (54)	739
9.10.87	Removing the chain (55)	740
9.10.88	Installing the chain (55)	741
9.10.89	Removing the chain (56)	741
9.10.90	Installing the chain (56)	742
9.10.91	Removing the belt (57)	743
9.10.92	Installing the belt (57)	744
9.10.93	Removing and installing belts (58), (60) and (61)	745
9.10.94	Removing chain (K62)	745
9.10.95	Installing the chain (K62)	746
9.10.96	Adjusting chain (K62)	746
9.10.97	Removing belt (R63)	747
9.10.98	Installing belt (R63)	747
9.10.99	Adjusting belt (R63)	747
9.11	Cab / air conditioner	749
9.11.1	Cleaning the cab filters	749
9.11.2	Cleaning the units located in the cab roof	749
9.11.3	Cleaning the windscreen and the side windows	750
9.11.4	Cleaning the condenser	751
9.11.5	Checking the refrigerant level	751
9.11.6	Replacing the filter receiver drier	752
9.11.7	Required refrigerant quantity – refrigerant R 134 a	752
9.11.8	Oil for the compressor	752
9.11.9	Maintenance work before the harvest	752
9.11.10	Putting the air conditioner into operation	753
9.12	Fire extinguisher	754
9.12.1	Checking the fire extinguisher	754
9.13	Compressed-air system (accessory)	755
9.13.1	Compressed-air system	755
9.13.2	Compressed-air connections	756
9.13.3	Compressed-air gun and woven hose	756
9.13.4	Draining the accumulator	757
9.13.5	Pressure controller	757
9.13.6	Checking the safety valve	758
9.14	Straw chopper with uni-spreader	759
9.14.1	Replacing the free-swinging knives for grain	759
9.14.2	Removing the straw guide plate (straw chopper with uni-spreader)	759
9.14.3	Installing the straw guide plate (straw chopper with uni-spreader)	760
9.14.4	Removing the straw guide plate (rice straw chopper with standard spreader)	760
9.14.5	Installing the straw guide plate (rice straw chopper with standard spreader)	762
9.14.6	Removing the free-swinging knives for grain	763
9.14.7	Bolting down the free-swinging knives for grain	764
9.14.8	Replacing the stationary knives	766
9.15	Rice straw chopper with standard spreader	767
9.15.1	Replacing the free-swinging knives for grain	767
9.15.2	Removing the straw guide plate (rice straw chopper with standard spreader)	767
9.15.3	Installing the straw guide plate (rice straw chopper with standard spreader)	769
9.15.4	Removing the free-swinging knives for grain	770

9.15.5	Bolting down the free-swinging knives for grain	771
9.15.6	Replacing the stationary knives	773
9.16	Straw chopper with radial spreader	774
9.16.1	Replacing the free-swinging knives for grain	774
9.16.2	Removing the straw guide plate (straw chopper with radial spreader)	774
9.16.3	Installing the straw guide plate (straw chopper with radial spreader)	775
9.16.4	Removing the free-swinging knives for grain	776
9.16.5	Bolting down the free-swinging knives for grain	777
9.16.6	Replacing the stationary knives	779
9.17	Straw chopper with standard spreader	780
9.17.1	Replacing the free-swinging knives for grain	780
9.17.2	Removing the straw guide plate (straw chopper with standard spreader)	780
9.17.3	Installing the straw guide plate (straw chopper with standard spreader)	782
9.17.4	Removing the free-swinging knives for grain	783
9.17.5	Bolting down the free-swinging knives for grain	784
9.17.6	Replacing the stationary knives	786
9.18	Winter storage	787
9.18.1	Winter storage instructions for combines	787

10 Maintenance – Engine

10.1	Important maintenance instructions	789
10.1.1	Important maintenance instructions and safety rules	789
10.1.2	Cooling water and air intake hoses	789
10.1.3	Coolant	789
10.1.4	Belts	789
10.1.5	Cleaning the engine compartment and hazard areas	790
10.1.6	Alternator	790
10.1.7	Warranty on non genuine CATERPILLAR products	790
10.1.8	Approved engine oils	790
10.1.9	Engine oils with dry lubricant additives	790
10.2	Maintenance schedules	791
10.2.1	Maintenance schedule Mercedes-Benz OM 502 LA	791
10.2.2	CATERPILLAR C-12 maintenance schedule	793
10.2.3	Maintenance schedule CATERPILLAR C-13	795
10.3	Lubricants charts	797
10.3.1	Lubricants chart of Mercedes-Benz OM 502 LA engine	797
10.3.2	Lubricants chart of Mercedes-Benz OM 502 LA cooling system	797
10.3.3	Engine lubricants chart CATERPILLAR C13, C12	798
10.3.4	Cooling system lubricants chart CATERPILLAR C13, C12	799
10.4	Engine overview	800
10.4.1	Engine overview of Mercedes-Benz OM 502 LA	800
10.4.2	Engine overview CATERPILLAR C-13	801
10.4.3	Engine overview CATERPILLAR C-12	802
10.5	Fuel system / engine oil	803
10.5.1	Fuel system	803
10.5.2	Fuel tank	803
10.5.3	Fuel tank breather (from serial no. ...)	804
10.5.4	Additional fuel tank (LEXION 580, accessory)	804

10.5.5 Shut-off tap for additional fuel tank (LEXION 580, accessory)	804
10.5.6 Replaceable filter – Additional fuel tank (LEXION 580, up to serial no. ...)	805
10.5.7 Replaceable filter – Additional fuel tank (LEXION 580 from serial no. ...)	805
10.5.8 Fuel shut-off tap	806
10.5.9 Water separator / fuel prefilter (standard equipment – small version)	806
10.5.10 Water separator / Fuel pre-filter (accessory)	807
10.5.11 Manual fuel pump with fuel sediment bowl (Mercedes-Benz OM 502 LA)	808
10.5.12 Replacing the fuel filter element (Mercedes-Benz OM 502 LA)	808
10.5.13 Replacing the fuel filter cartridge (CATERPILLAR C-13 / C-12)	809
10.5.14 Bleeding the fuel system	810
10.5.15 Engine oil level check	810
10.5.16 Engine oil change	811
10.5.17 Draining used oil	812
10.5.18 Oil filter	813
10.5.19 Topping up engine oil	814
10.6 Cooling system	815
10.6.1 Coolant	815
10.6.2 Draining coolant from the water radiator	815
10.6.3 Topping up coolant	816
10.6.4 Identify the coolant type	818
10.6.5 Coolant mixing ratio	819
10.6.6 Changing the coolant	819
10.6.7 Shut down the overheated engine	821
10.6.8 Rotary chaff screen	822
10.6.9 Cleaning the water cooler (rotary chaff screen)	823
10.6.10 Cleaning the cooling unit (planar rotary chaff screen)	824
10.6.11 Greasing the chain (K62)	827
10.6.12 Installing the deflector (planar rotary chaff screen)	827
10.6.13 Adjusting the nozzle (planar rotary chaff screen)	829
10.6.14 Diesel engine fault	830
10.7 Dry-type air cleaner	832
10.7.1 Dry-type air cleaner in general	832
10.7.2 Warning device	833
10.7.3 Cleaning the air filter suction screen (up to serial no. ...)	834
10.7.4 Cleaning the air filter suction screen (from serial no. ...)	834
10.7.5 Cleaning the air filter with plastic housing	835
10.7.6 Cleaning the air filter with metal housing	837
10.7.7 Safety filter cartridge	839
10.7.8 Removing and installing safety cartridge (plastic housing)	840
10.7.9 Removing and installing safety cartridge (metal housing)	841
10.8 Alternator	842
10.8.1 Cleaning the alternator	842
10.9 Electrical system	843
10.9.1 Battery	843
10.9.2 Alternator	844
10.10 Problem, cause and / or remedy	845
10.10.1 Engine	845

10.11 Winter storage	847
10.11.1 Engine winter storage	847

11 Lubrication chart

11.1 Lubrication points	848
11.1.1 Greasing cycles	848
11.1.2 Lubrication points - 10 h on the left	851
11.1.3 Lubrication points - 50 h on the left	852
11.1.4 Lubrication points - 50 h on the right	854
11.1.5 Lubrication points - 100 h on the left	856
11.1.6 Lubrication points - 100 h on the right	859
11.1.7 Lubrication points - 500 h on the left	861
11.1.8 Lubrication points - 500 h on the right	862

1 Introduction

1.1 General Information

102866

1.1.1 How to use this manual

This operator's manual is the original operator's manual. In the following texts, it will be referred to simply as the operator's manual.

This operator's manual is intended for all users and provides information on the use, operation, adjustment, maintenance, cleaning and transportation of the machine.

Provided all instructions regarding proper maintenance and operation of your machine are followed, you can count on many years of reliable service.

Failure to perform maintenance or incorrect operation lead to an increased safety risk, premature wear, a reduction in performance, loss of earnings and time. Have the post harvest check / annual check performed regularly by your CLAAS dealer. A combination of the prescribed maintenance work with the post harvest check is recommended.

If you use the latest expertise and experience that went into this machine, it will render you consistently excellent service.

There is a separate operator's manual for front attachments and hitched devices.

Texts and figures





Pictures and graphics are neutral. Differences are pointed out by notes beneath the figure.

Texts are short and not machine-specific as far as possible. Differences are pointed out by intermediate headings.

Different types of texts can easily be distinguished from one another by their formats. The following formats are distinguished:

Formatting	Meaning	Description
Description	Text	Further information on the subject.
– Instructions	Operation	Operations which must be carried out one after the other.
<i>Result</i>	Result	Consequence of operations carried out.

References can easily be distinguished by suitable symbols. The following symbols are distinguished:

Symbol	Meaning	Description
	See index	The symbol  indicates that further information on this subject can be found at another point in this manual.
	See index of the relevant Operator's manual	The symbol  indicates that further information on this subject can be found in the Operator's manual of that machine or equipment.

Document structure based on subassemblies

As far as the contents permit, the chapters of this manual are structured according to subassemblies. The structure of these subassemblies is the same in all chapters.

Different product groups have different document structures based on subassemblies. CLAAS always takes care to keep these document structures based on subassemblies identical in any documents.

Search and find

The wanted subject can easily be found with the recurring subassembly structure, using the table of contents or the header line of this manual.

In addition, the index of this manual is a useful tool for locating a specific subject. The index can be found on the last pages of this manual.

Directions

Text elements such as front, rear, right and left always apply to the direction of travel. In figures, the direction of travel may be indicated by a direction arrow.

Optional equipment and accessories

Optional equipment includes equipment variants of the machine where different variants are available, but only one variant can be fitted.

Accessories are equipment items that may be additionally fitted to the machine, but are not included in the standard scope of the machine.

Both terms designate possible variants. Standard scopes and equipment variants may differ in other countries.

Your CLAAS Service Department

1.1.2 Validity of Operator's manual

The present Manual applies to the following machine / front attachment:

Designation	Type	Machine serial number	
		from	to
LEXION 580	586	58600011	—
LEXION 570, 570 C	585	58500011	—

2 General Information

2.1 Road traffic

In addition to his driving licence, the operator must always carry the copy of the vehicle type approval registration issued by the Kraffahrt-Bundesamt (the German Federal Motor Vehicle Executive). A warning triangle and, on machines over 4 t permissible total weight, at least one wheel chock must always be carried on the combine.

When driving on public roads with the combine harvester comply with all the requirements stated under letter C in the copy of the vehicle type approval registration (§ 18 Section 5 StVZO) issued by the Kraffahrt-Bundesamt.

On machines with excess width (width over the tyres), a vehicle type approval registration for individual vehicles (single expert opinion) and a special approval in accordance with § 70, Section 1, clauses 1 and 2 of the StVZO must be carried instead of the General Operating Permit. Furthermore, all the requirements stated in the vehicle type approval registration for individual vehicles and in the special approval must be observed. The issue of a special approval differs from country to country. The excess width must be marked in accordance with the regulations for marking of excess-width road vehicles (e.g. two marker boards at the front and the rear each, protective bar, two amber flashing warning beacons).

If any part(s) of the combine harvester is/are subsequently modified whose condition is/are prescribed or the operation of which (after being modified) could represent a hazard to other road users, then the vehicle type approval registration shall no longer be valid and application must be made for a new vehicle type approval registration. In this case the machine must be presented to the motor vehicle safety inspection authority responsible (e.g. TÜV) in order to obtain an expert opinion certificate (§ 19 section 2 StVZO).

If you are in any doubt as to whether this situation applies in your case, please contact us as manufacturers.

If a transport vehicle for front attachments is towed behind the combine harvester, then the cable for the lighting system must be connected and the good condition of the lighting system assured.

If the combine is equipped with a maize picker head or folding cutterbar, the regulations and requirements of the machine's General Operating Permit must be observed, in particular the requirements concerning ballast weights and tyres.

Registration

As a self propelled working machine with a maximum speed **of more than 20 km/h**, the combine is subject to registration and needs to have licence plates fitted.

As a self propelled working machine with a maximum speed **of up to 20 km/h**, the combine is not subject to registration and does not need to have licence plates fitted.

The machine must be clearly and indelibly marked on the left side with the Christian name and surname of the owner and his address.

The towing of trailers in the trailer hitch when driving on public roads is **not** permitted.

Road traffic regulations may vary between countries. In case of discrepancies between the instructions provided by the manufacturer and the traffic regulations of the relevant countries, the traffic regulations of the countries concerned apply.

2.2 Important notice

The instructions contained in this manual should be carefully read and observed by all persons involved with the operation, maintenance and inspection of this machine in order to prevent accidents. In particular, read the section "Safety rules".

The use of spare parts, accessories and ancillary equipment other than genuine CLAAS products or those which have been tested and approved by CLAAS, may change the specified design characteristics of this CLAAS machine or detract from its functional performance, with a possible adverse effect on the active and/or passive operational safety of the machine and its occupational safety standards (accident prevention).

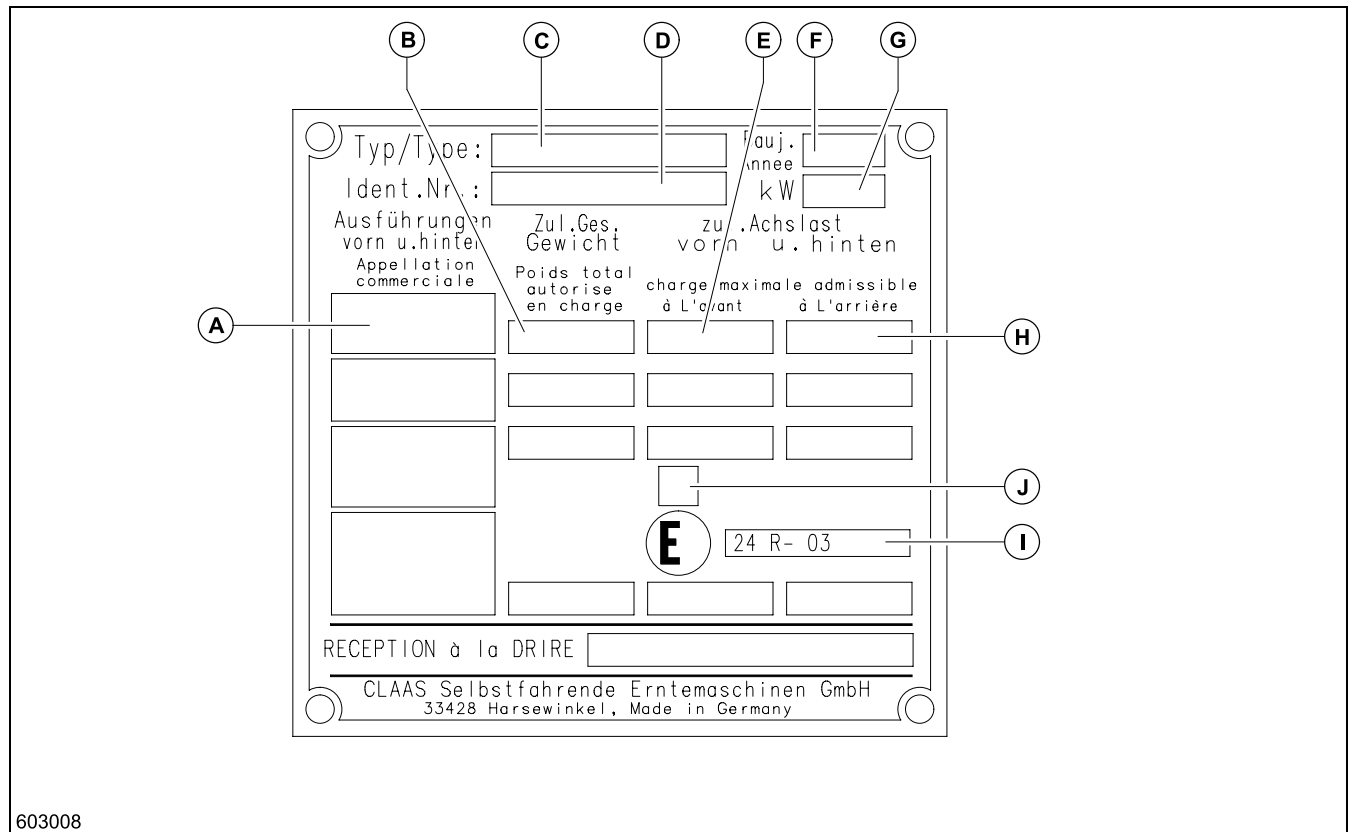
CLAAS is in no way liable for any damage or personal injury caused through the use of other than original or approved CLAAS parts, accessories and ancillary equipment.

Technical data, dimensions and weights are given as an indication only. CLAAS reserves the right to make changes subsequently as technical developments continue. Responsibility for errors or omissions is not accepted.

Front, rear, right and left refer to the direction of forward travel.

2.3 Identification plate / Serial number

2.3.1 Identification plate / Serial number



603008

3903

1

	Designation
A	Equipment options
B	Maximum admissible total weight
C	Type
D	Identification no. (machine serial number)
E	Maximum admissible load on front axle
F	Year of construction
G	Rated capacity of engine (kW)
H	Maximum admissible load on rear axle
I	Approval no. according to ECE-R 24
J	Absorption coefficient according to ECE-R 24

(Fig. 1)

69707

When ordering spare parts and in case of technical questions, indicate the machine number of the CLAAS combine and when the engine, front attachments, cutterbar and maize picker are concerned, also the respective serial numbers.

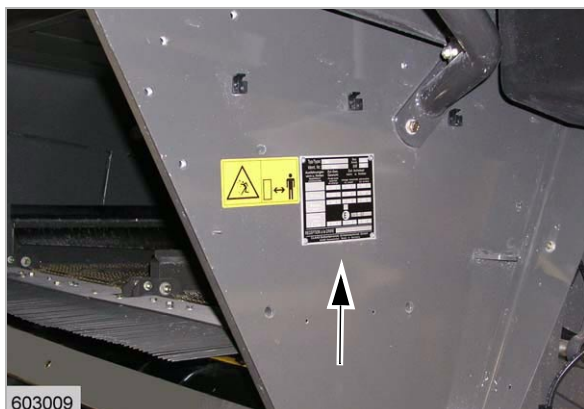
This is necessary as otherwise, incorrect spare part deliveries may result.

5873

2.3.2 Identification plate

The identification plate of the machine is located on the right hand side above the rear axle.

(Fig. 2)



2

9502

2.3.3 Machine serial number

The machine serial number is stamped on the engine frame underneath the operator's platform on the right hand side of the machine.

(Fig. 3)



3

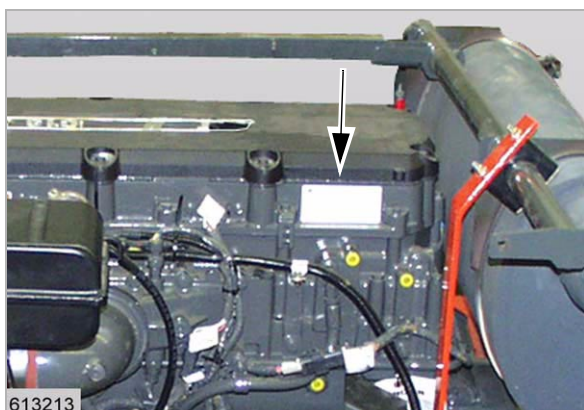
3907

2.3.4 Engine serial number

CATERPILLAR C-13, exhaust emission level 3a

Engine number: MDB ...

(Fig. 4)



4

4803

5874

10378

Thank you so much for reading.
Please click the “Buy Now!”
button below to download the
complete manual.



After you pay.

You can download the most
perfect and complete manual in
the world immediately.

Our support email:

ebooklibonline@outlook.com