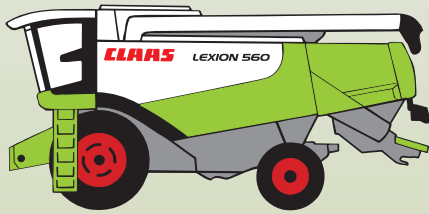


# **CLAAS**



**LEXION 560 / 550**  
**LEXION 540 / 540 C**  
**LEXION 530 / 520 / 510**

## **Operator's Manual**

***SERVICE & PARTS***

**Contents**

**1 Introduction**

**1.1 General Information** ..... **22**  
 1.1.1 How to use this manual ..... 22  
 1.1.2 Validity of instructions ..... 24

**2 General Information**

**2.1 Road traffic** ..... **25**  
**2.2 Important notice** ..... **27**  
**2.3 Identification plate / Serial number** ..... **28**  
 2.3.1 Identification plate / Serial number ..... 28  
 2.3.2 Identification plate ..... 29  
 2.3.3 Machine serial number ..... 29  
 2.3.4 Engine serial number ..... 29  
 2.3.5 Straw chopper identification plate ..... 31  
 2.3.6 Cab serial number ..... 31  
**2.4 Attachment parts / machine body** ..... **32**  
 2.4.1 Access to the workplace and maintenance areas ..... 32

**3 Safety Rules**

**3.1 Safety rules** ..... **35**  
 3.1.1 General information ..... 35  
 3.1.2 Identification of warning and danger signs ..... 35  
 3.1.3 Intended use ..... 36  
 3.1.4 Reasonable foreseeable misuse ..... 37  
 3.1.5 General safety and accident prevention regulations ..... 37  
 3.1.6 Transporting passengers, instructor, operating personnel ..... 38  
 3.1.7 Driving operations ..... 38  
 3.1.8 Leaving the combine harvester ..... 39  
 3.1.9 Front attachments (cutterbar etc.) and other components ..... 39  
 3.1.10 Air conditioner ..... 40  
 3.1.11 Maintenance ..... 40  
 3.1.12 Basic rule ..... 40  
 3.1.13 Accumulators ..... 40  
 3.1.14 Decommissioning and disposal ..... 41  
 3.1.15 Cylinder safety lock ..... 41  
 3.1.16 Fire extinguisher ..... 42  
 3.1.17 Battery isolating switch ..... 43  
 3.1.18 Wheel chocks ..... 43  
 3.1.19 Jack up the machine ..... 44  
 3.1.20 Loading and tying down the machine ..... 45  
 3.1.21 Hydraulic system ..... 46  
 3.1.22 Danger of injury due to escaping hydraulic liquid ..... 46  
**3.2 Safety decals with pictorials** ..... **47**  
 3.2.1 General information on safety decals ..... 47  
 3.2.2 Safety decals ..... 48

## 4 Specifications

<b>4.1</b>	<b>CLAAS LEXION 560 / 550 / 540 / 540 C</b>	<b>72</b>
4.1.1	Cab / Operator's platform	72
4.1.2	Cutterbar	72
4.1.3	Threshing mechanism	73
4.1.4	Separation	73
4.1.5	Cleaning (Standard cleaning system)	74
4.1.6	Grain delivery	74
4.1.7	Engine	75
4.1.8	Chassis	77
4.1.9	Tyres and tyre pressures	78
4.1.10	Torque settings of wheel bolts	80
4.1.11	Track width	81
4.1.12	Transport position / Working position	84
4.1.13	Weights	87
4.1.14	Safety features	87
<b>4.2</b>	<b>CLAAS LEXION 530 / 520</b>	<b>88</b>
4.2.1	Cab / Operator's platform	88
4.2.2	Cutterbar	88
4.2.3	Threshing mechanism	89
4.2.4	Separation	89
4.2.5	Cleaning (Standard cleaning system)	90
4.2.6	Grain delivery	90
4.2.7	Engine	91
4.2.8	Chassis	92
4.2.9	Tyres and tyre pressures	93
4.2.10	Torque settings of wheel bolts	94
4.2.11	Track width	95
4.2.12	Transport position / Working position	99
4.2.13	Weights	102
4.2.14	Safety features	102
<b>4.3</b>	<b>CLAAS LEXION 510</b>	<b>103</b>
4.3.1	Cab / Operator's platform	103
4.3.2	Cutterbar	103
4.3.3	Threshing mechanism	104
4.3.4	Separation	105
4.3.5	Cleaning (Standard cleaning system)	105
4.3.6	Grain delivery	105
4.3.7	Engine	106
4.3.8	Chassis	107
4.3.9	Tyres and tyre pressures	108
4.3.10	Torque settings of wheel bolts	108
4.3.11	Track width	109
4.3.12	Transport position / Working position	113
4.3.13	Weights	116
4.3.14	Safety features	116

## 5 Prior to operation

<b>5.1</b>	<b>General Information</b>	<b>117</b>
5.1.1	Initial operation check list	117
5.1.2	Loading and tying down the machine	118
<b>5.2</b>	<b>Cab</b>	<b>120</b>
5.2.1	Cab with automatic air conditioner	120
5.2.2	Automatic air conditioner	122
5.2.3	Putting the automatic air conditioner into operation	123
5.2.4	Setting the cab temperature	124
5.2.5	Manually setting the evaporator blower speed	124
5.2.6	Activating ECON operating mode	125
5.2.7	Deactivating ECON operating mode	125
5.2.8	REHEAT operation (Dehumidify cab windows)	126
5.2.9	Displaying the outside temperature	127
5.2.10	Changing the temperature display to °Fahrenheit	127
5.2.11	Floor heating	127
5.2.12	Display of malfunction - Error in thermometer F0 (cab, blue)	128
5.2.13	Display of malfunction - Error in thermometer F1 (exhaust, yellow)	128
5.2.14	Display of malfunction - Error in thermometer F2 (outside, red)	128
5.2.15	Cab with air conditioner (Standard version)	129
5.2.16	Putting the air conditioning system into operation	131
5.2.17	Heater	132
5.2.18	Floor heating	133
5.2.19	REHEAT operation (Dehumidify cab windows)	133
5.2.20	Problem, possible cause or remedy – air conditioner system	134
5.2.21	Cooling box	136
5.2.22	Cooling unit (option)	136
5.2.23	Cooling bag (option)	136
5.2.24	Ice bucket (option)	137
5.2.25	Windscreen washer	137
5.2.26	Crop inspection	137
5.2.27	Opening and closing the cab roof	138
5.2.28	Cab emergency exit	138
5.2.29	Operator's platform overview	139
5.2.30	Control console	141
5.2.31	Screen (vehicle information display)	144
5.2.32	Screen (harvest display)	146
5.2.33	Keys C / Rotary switch D	148
5.2.34	Ignition switch	149
5.2.35	Multifunction switch	150
5.2.36	Vehicle information unit	151
5.2.37	Multifunction handle	152
5.2.38	Reel height limitation	153
5.2.39	Steering column adjustment	154
5.2.40	Steering wheel height adjustment	154
5.2.41	Central terminal compartment	155
5.2.42	Contents – Central terminal compartment (up to serial no. ...)	156

5.2.43	Fuses (up to serial no. ...)	157
5.2.44	Relays (up to serial no. ...)	159
5.2.45	Contents – Central terminal compartment (from serial no. ...)	162
5.2.46	Fuses (from serial no. ...)	163
5.2.47	Relays (from serial no. ...)	165
5.2.48	Operator's seat	168
5.2.49	Operator's seat, mechanical	168
5.2.50	Air-suspended driver's seat	170
<b>5.3</b>	<b>Lighting and socket outlets</b>	<b>173</b>
5.3.1	Headlights, working lights, mirrors	173
5.3.2	Sidefinder (option)	179
5.3.3	Pathfinder lighting	179
5.3.4	Side position lights in case of excess width	180
5.3.5	Socket outlet 12 V	182
5.3.6	CDS 5000 diagnosis connection socket outlet	184
<b>5.4</b>	<b>Access ladder</b>	<b>185</b>
5.4.1	Access and ladder extension	185
5.4.2	Pre-assembling the front ladder (from serial no. ...)	190
5.4.3	Installing the front ladder	190
5.4.4	Swivelling the front ladder (up to serial no. ...)	193
5.4.5	Swivelling the front ladder (from serial no. ...)	195
5.4.6	Ladder starting protection	196
5.4.7	Rear ladder	197
<b>5.5</b>	<b>Side panels</b>	<b>199</b>
5.5.1	Opening and closing the side panels and the tailgate	199
5.5.2	Opening the tailgate	200
5.5.3	Adjusting the gripping height of the side panels	201
5.5.4	Adjusting the side panel lock	202
5.5.5	Tool cabinet	202
<b>5.6</b>	<b>Mud guards / Side panels / Hitch block / Transport trailer</b>	<b>204</b>
5.6.1	Installing the mudguards	204
5.6.2	Adapting the side panels (Rice harvesting machines)	205
5.6.3	Fitting the hitch block	205
5.6.4	Converting the transport trailer to suit the machine	206
<b>5.7</b>	<b>Rear axles (Standard cleaning system)</b>	<b>207</b>
5.7.1	Rear axle overview	207
5.7.2	Rear drive axle 000 669 835 6	207
5.7.3	Rear axle 000 768 705 1	208
5.7.4	Rear axle 000 770 920 1	208
5.7.5	Rear axle 000 769 600 4	208
5.7.6	Rear axle 000 770 347 1	209
5.7.7	Rear axle 000 770 810 1	209
5.7.8	Converting the rear drive axle from transport to working position	209
5.7.9	Rear drive axle - Adjusting the track width	210
5.7.10	Rear drive axle 000 694 760 1 - Adjusting the steering stop	214
5.7.11	Converting the rear axle 000 770 920 1 / 000 768 705 1 from transport to working position	215
5.7.12	Converting the rear axle 000 769 600 4 from transport to working position	217

5.7.13	Rear axle 000 769 600 4 – Adjusting the track width	218
5.7.14	Converting the rear axle 000 770 347 1 / 000 770 810 1 from transport to working position	220
5.7.15	Rear axle 000 770 347 1 – Adjusting the track width	221
<b>5.8</b>	<b>Additional weights of rear axle</b>	<b>224</b>
5.8.1	Additional weights on rear axle LEXION 560 – 540 Standard cleaning system	224
5.8.2	Additional weights on rear axle LEXION 530 – 510 Standard cleaning system	225
5.8.3	Liquid filling of rear axle tyres	226
5.8.4	Installing the rear axle weight	227
5.8.5	Shipping package – rear axle weight (Rear drive axle)	228
5.8.6	Installing the rear axle weight	229
5.8.7	Shipping package – rear axle weight (adjustable and rigid rear axle)	230
<b>5.9</b>	<b>Cutterbar hydraulic cylinders</b>	<b>231</b>
5.9.1	Fitting the cutterbar hydraulic cylinders with springs	231
5.9.2	Number of cutterbar cylinders (LEXION 560 – 540)	231
5.9.3	Number of cutterbar cylinders (LEXION 530 – 510)	233
5.9.4	Installing the cutterbar floatation springs hydraulic cylinder	234
<b>5.10</b>	<b>Accumulator</b>	<b>235</b>
5.10.1	Filling the accumulator for CLAAS AUTO CONTOUR II	235
5.10.2	Special tool for filling the CLAAS AUTO CONTOUR II accumulator	240
<b>5.11</b>	<b>Dual fitments</b>	<b>241</b>
5.11.1	Installing the dual wheels	241
5.11.2	Use of front ladder when dual fitments are fitted (up to serial no. ...)	243
5.11.3	Use of front ladder when dual fitments are fitted (from serial no. ...)	244
<b>5.12</b>	<b>Grain tank</b>	<b>246</b>
5.12.1	Closing the grain tank drain holes	246
5.12.2	Open the grain tank cover completely by hand	247
<b>5.13</b>	<b>Driving the combine with mechanical control</b>	<b>248</b>
5.13.1	Driving the combine in general	248
5.13.2	Ground speed control lever variants	248
5.13.3	Engine speed rotary switch	249
5.13.4	Medium engine idle speed	250
5.13.5	Starting the engine	251
5.13.6	Forward travel / reverse travel	252
5.13.7	Gear selection	252
5.13.8	Setting the ground speed control lever to move easily	254
5.13.9	Setting the ground speed control lever to move easily	254
5.13.10	Stopping	255
5.13.11	Machine driving characteristics	255
5.13.12	Handling with cutterbar trailer	255
5.13.13	Steering	255
5.13.14	Coupling / decoupling brake pedals of the foot brake	256
5.13.15	Brake lining wear indicator (up to serial no. ...)	256
5.13.16	Parking brake	256
5.13.17	Stopping the engine	257
5.13.18	Engaging/disengaging the CLAAS 4-Trac system	258
5.13.19	Towing the machine	258
5.13.20	Forward towing	259

5.13.21 Reverse towing	259
5.13.22 EHS emergency shifting using the gear pushbutton (from serial no. ...)	260
5.13.23 Emergency operation decal – Electro-hydraulic gearshift (EHS)	262
5.13.24 Engaging the neutral gearbox position mechanically	263
5.13.25 Restoring the original state (gearbox can again be shifted electro-hydraulically)	264
5.13.26 Engaging the neutral gearbox position hydraulically	267
5.13.27 Engaging the 2nd gear hydraulically	268
<b>5.14 CLAAS Autopilot (Maize picker)</b>	<b>269</b>
5.14.1 Putting the CLAAS Autopilot into operation	269
<b>5.15 CLAAS Autopilot (Grain cutterbar)</b>	<b>271</b>
5.15.1 Adjusting the directional stability of the combine harvester	271
5.15.2 Setting the laser sensor in the field	273
5.15.3 Rough adjustment	274
5.15.4 Fine adjustment	275
5.15.5 Laser sensor (crop edge has moved out of visible range)	275
5.15.6 Adjusting the right laser sensor (accessory)	276
5.15.7 Putting the CLAAS Autopilot into operation	277
5.15.8 Use in rape with left side cutter	278
<b>5.16 Information about hitching/unhitching trailers</b>	<b>279</b>
5.16.1 General information	279
5.16.2 General safety instructions	279
5.16.3 Hitching the trailer	280
5.16.4 Unhitching the trailer	282
<b>6 Installing and removing the cutterbar</b>	
<b>6.1 Installing the cutterbar</b>	<b>283</b>
6.1.1 Tilting the cutterbar from transport position	283
6.1.2 Adjusting the cutterbar cross levelling hydraulic cylinder (up to serial no. ...)	284
6.1.3 Adjusting the cutterbar cross levelling hydraulic cylinder (from serial no. ...)	285
6.1.4 Aligning the coupling pins	285
6.1.5 Attaching the front attachment	286
6.1.6 Locking cutterbars and maize pickers (Cutterbars without Auto Contour)	287
6.1.7 Connecting the universal drive shaft	288
6.1.8 Mounting the stands	289
<b>6.2 Removing the cutterbar</b>	<b>290</b>
6.2.1 Removing the universal coupling	290
6.2.2 Removing the universal drive shaft	291
6.2.3 Opening the cutterbar locking	291
6.2.4 Laying down the cutterbar on the ground	292
6.2.5 Placing the cutterbar on the cutterbar trailer	292
<b>7 CEBIS operation (Version 8.23)</b>	
<b>7.1 CLAAS CEBIS on-board information system</b>	<b>295</b>
<b>7.2 CEBIS monitor and rotary switch</b>	<b>296</b>
7.2.1 C keys	296
7.2.2 Rotary switch D	296
7.2.3 Flagging Box	297
7.2.4 Multifunction handle	297
7.2.5 Monitor areas E (Harvest display)	298

<b>7.3 Rotary switch D</b> .....	<b>302</b>
<b>7.4 Prior to initial operation</b> .....	<b>304</b>
<b>7.5 Vehicle information display</b> .....	<b>305</b>
<b>7.6 Harvest display</b> .....	<b>306</b>
<b>7.7 Montana control system</b> .....	<b>307</b>
7.7.1 Axle control mode .....	307
7.7.2 Cutting angle control .....	307
7.7.3 Lateral levelling control .....	308
7.7.4 Montana axle end stops .....	308
7.7.5 Cutting angle limits .....	308
7.7.6 Lateral levelling limits .....	309
7.7.7 Display period .....	309
<b>7.8 CLAAS CRUISE PILOT</b> .....	<b>310</b>
7.8.1 Maximum ground speed .....	310
7.8.2 Zero throughput .....	310
<b>7.9 Yield mapping</b> .....	<b>311</b>
<b>7.10 Flagging</b> .....	<b>313</b>
<b>7.11 GPS</b> .....	<b>314</b>
7.11.1 Mapping ON/OFF .....	314
7.11.2 Mapping monitor .....	314
7.11.3 Load GPS data .....	315
<b>7.12 Preset reel values</b> .....	<b>316</b>
7.12.1 Horizontal reel position .....	316
7.12.2 Reel speed .....	316
7.12.3 Reel height .....	317
<b>7.13 Preset front attachment values</b> .....	<b>318</b>
7.13.1 Snapping plate clearance .....	318
7.13.2 Cutterbar table length .....	318
7.13.3 CAC settings .....	319
7.13.4 CAC setting for LEXION Montana .....	320
<b>7.14 Partial width selection</b> .....	<b>321</b>
<b>7.15 Yield meter</b> .....	<b>322</b>
7.15.1 Components .....	322
7.15.2 Basic settings and calibration .....	323
7.15.3 Preparations for yield measuring .....	323
7.15.4 Moisture measurement ON/OFF, Moisture correction, Storage moisture .....	325
7.15.5 A quick way to obtain reasonable measuring data .....	325
<b>7.16 Yield measuring</b> .....	<b>326</b>
7.16.1 Calibration factor .....	326
7.16.2 Yield zero point measuring .....	326
7.16.3 Test-weighing .....	327
7.16.4 Weight measured .....	327
7.16.5 Moisture correction .....	327
7.16.6 Moisture measurement ON/OFF .....	328
7.16.7 Zero angle .....	328
7.16.8 Storage moisture .....	328
7.16.9 Display dry yield .....	329
<b>7.17 Crop-dependent settings</b> .....	<b>330</b>
7.17.1 List of crops .....	330

7.17.2	Cleaning by blowing	332
<b>7.18</b>	<b>Recording</b>	<b>333</b>
7.18.1	Planned records	333
7.18.2	Start / Stop	335
7.18.3	Completed records	335
7.18.4	Daily recorder	337
7.18.5	Total recorder	338
7.18.6	Crop recorder	338
7.18.7	Copying the chip card	339
<b>7.19</b>	<b>Adjustments</b>	<b>340</b>
7.19.1	Cutterbar	340
7.19.2	Speeds	345
7.19.3	Tachometer	347
7.19.4	Separation	350
7.19.5	CEBIS	351
7.19.6	Maintenance	356
7.19.7	Operator's manual	357
7.19.8	Code protection	361
<b>7.20</b>	<b>Engine loading</b>	<b>362</b>
7.20.1	Engine diagnosis	362
<b>7.21</b>	<b>Alarms</b>	<b>363</b>
<b>7.22</b>	<b>Messages</b>	<b>364</b>
<b>7.23</b>	<b>Fault / Remedy - Yield meter</b>	<b>365</b>
<b>7.24</b>	<b>Guideline values for pulses/100 m</b>	<b>367</b>
<b>8</b>	<b>Operation – Basic machine</b>	
<b>8.1</b>	<b>HP feed rake conveyor</b>	<b>368</b>
8.1.1	Adjusting the height of feeder chains	368
8.1.2	Adjusting the cutting angle of the HP feed rake conveyor (option) to its basic adjustment	368
8.1.3	Adjusting the cutting angle of the HP feed rake conveyor (optional equipment)	371
8.1.4	Front attachment reverser	373
8.1.5	Cutting height indicator	373
8.1.6	Setting the drop rate of the front attachment	374
8.1.7	Engaging the front attachment	374
8.1.8	Disengaging the front attachment (switch console)	375
8.1.9	Disengaging the front attachment (multifunction handle)	375
<b>8.2</b>	<b>Standard feed rake conveyor</b>	<b>376</b>
8.2.1	Adjusting the height of feeder chains	376
8.2.2	Feeder chain safety feature	377
8.2.3	Front attachment reverser	377
8.2.4	Checking the setting of the cutterbar floatation springs	378
8.2.5	Cutting height indicator	379
8.2.6	Spring pressure indicator	380
8.2.7	Blocking the front attachment floatation springs (Hydraulic lock)	380
8.2.8	Unlocking the front attachment floatation springs (Hydraulic lock)	380
8.2.9	Blocking the front attachment floatation springs (Mechanical blocking)	381
8.2.10	Unlocking the front attachment floatation springs (Mechanical blocking)	381
8.2.11	Setting the drop rate of the front attachment	381

8.2.12	Engaging the front attachment (switch console, up to serial no. ...)	382
8.2.13	Engaging the front attachment (switch console, from serial no. ...)	382
8.2.14	Disengaging the front attachment (switch console)	383
8.2.15	Disengaging the front attachment (multifunction handle)	383
<b>8.3</b>	<b>Threshing mechanism</b>	<b>384</b>
8.3.1	Stone trap (small stone trap)	384
8.3.2	Stone trap (large stone trap)	385
8.3.3	Engaging the threshing mechanism	385
8.3.4	Disengaging the threshing mechanism	386
8.3.5	Threshing drum	387
8.3.6	Cleaning the threshing mechanism	387
8.3.7	Concave setting	387
8.3.8	Basic concave setting	388
8.3.9	Designations and dimensions for grain concave / maize concave (small stone trap)	393
8.3.10	Designations and dimensions for grain concave / maize concave (large stone trap)	394
8.3.11	Designations and dimensions on spike tooth concave (large stone trap)	395
8.3.12	Designations and dimensions on spike tooth concave (small stone trap)	396
8.3.13	Adjusting the concave position sensor	397
8.3.14	Threshing drum speed	398
8.3.15	Drum drives	398
8.3.16	Two-step variable-speed drive	398
8.3.17	Removing and installing the preconconcave segments (small stone trap)	399
8.3.18	Removing and installing the preconconcave segments (large stone trap)	401
8.3.19	Concave segment	402
8.3.20	Removing the concave segment (small stone trap)	403
8.3.21	Installing the concave segment (small stone trap)	404
8.3.22	Removing a concave segment (large stone trap)	405
8.3.23	Installing the concave segment (large stone trap)	406
8.3.24	Disawner plates	407
8.3.25	Unslugging the threshing drum	407
8.3.26	Deflector curtain	408
8.3.27	Adjusting the deflector curtain	409
<b>8.4</b>	<b>Straw walker</b>	<b>410</b>
8.4.1	Straw walker - General	410
8.4.2	Cleaning the straw walker	410
8.4.3	Straw walker house plugging warning signal	411
8.4.4	Multiple finger separation system	411
8.4.5	Straw walker performance monitor	412
8.4.6	Straw walker sensors	412
8.4.7	Rice risers	413
8.4.8	Centre risers	415
8.4.9	Side risers	417
8.4.10	Parallel risers	419
8.4.11	CCM risers	420
<b>8.5</b>	<b>Cleaning (Standard cleaning system)</b>	<b>422</b>
8.5.1	Cleaning unit	422
8.5.2	Preparation floor	423

8.5.3	Frogmouth sieves	423
8.5.4	Electric sieve adjustment	423
8.5.5	Removing the sieves	424
8.5.6	Installing the sieves	427
8.5.7	Tightening torques of axial mountings for the upper and lower sieves	428
8.5.8	Sieves – Basic adjustment	429
8.5.9	Harvesting without lower sieves	429
8.5.10	Covering the returns pan	430
8.5.11	Cleaning fan	430
8.5.12	Adjusting the fan speed adjustment	430
8.5.13	Under-ventilated cleaning step (LEXION 560 – 520)	431
8.5.14	Adjusting the pre-separation deflector (LEXION 560 – 520)	431
8.5.15	Wind board (LEXION 560 – 520)	431
8.5.16	Straw walker step (LEXION 510)	432
8.5.17	Wind boards (LEXION 510)	432
8.5.18	Fan shutters for threshing grass seed and similar crops (accessory)	433
8.5.19	3-D cleaning system	434
8.5.20	Returns	434
8.5.21	Inspecting the returns	435
8.5.22	Upper sieve performance monitor	435
8.5.23	Sieve pan sensor	436
<b>8.6</b>	<b>Grain delivery</b>	<b>437</b>
8.6.1	Augers and auger troughs	437
8.6.2	Elevators	437
8.6.3	Grain tank	438
8.6.4	Grain tank extension	439
8.6.5	Unloading the grain tank	440
8.6.6	Emergency unloading grain tank cover	440
8.6.7	Grain tank unloading aid (accessory)	441
8.6.8	Grain tank unloading tube	441
8.6.9	Swinging the grain tank unloading tube out and in	442
8.6.10	Grain tank unloading tube transport position	443
8.6.11	Cleaning covers on the grain tank unloading tube	444
8.6.12	Shear bolt for grain tank unloading	444
8.6.13	Engaging and disengaging grain tank unloading	445
8.6.14	Grain tank access	446
8.6.15	Automatic chain lubrication – grain tank unloading (accessory)	447
8.6.16	Grain tank fill indicator	447
<b>8.7</b>	<b>Straw chopper with radial spreader</b>	<b>448</b>
8.7.1	Straw chopper	448
8.7.2	Checks prior to putting the straw chopper with radial spreader into operation	448
8.7.3	Putting the straw chopper into operation (swinging the radial spreader to chopping position)	449
8.7.4	Putting the straw chopper out of operation (swinging the radial spreader to swathing position)	450
8.7.5	Swinging the radial spreader to cutterbar trailer transport position	451
8.7.6	Adjusting the cross knife (straw chopper with radial spreader)	452

8.7.7	Adjusting the length of cut (straw chopper with radial spreader)	453
8.7.8	Activating the rasp bar (accessory) (straw chopper with radial spreader)	454
8.7.9	Adjusting the spreading width of radial spreader	455
8.7.10	Adjusting the spreading width centralising switch of radial spreader	456
8.7.11	Converting the radial spreader (spreader disc) to grain	457
8.7.12	Converting the radial spreader (spreader disc) to maize	458
8.7.13	Reducing the chopper speed	458
<b>8.8</b>	<b>Straw chopper with standard spreader</b>	<b>461</b>
8.8.1	Straw chopper	461
8.8.2	Checks prior to putting the straw chopper with standard spreader into operation	461
8.8.3	Straw chopper with standard spreader	461
8.8.4	Putting the straw chopper into operation (swinging the standard spreader to chopping position)	462
8.8.5	Putting the straw chopper out of operation (swinging the standard spreader to swathing position)	463
8.8.6	Swinging the standard spreader to cutterbar trailer transport position	464
8.8.7	Adjusting the cross knife (straw chopper with standard spreader)	465
8.8.8	Adjusting the length of cut (straw chopper with standard spreader)	466
8.8.9	Activating the rasp bar (accessory) (straw chopper with standard spreader)	467
8.8.10	Adjusting the standard spreader spreading width (up to serial no. ...)	468
8.8.11	Adjusting the standard spreader spreading width (from serial no. ...)	469
8.8.12	Adjusting the height of standard spreader	470
8.8.13	Adjusting the spreading width centralising switch of standard spreader	471
8.8.14	Reducing the chopper speed	471
<b>8.9</b>	<b>Chaff spreader</b>	<b>474</b>
8.9.1	Chaff spreader	474
8.9.2	Adjusting the chaff spreader speed	474
8.9.3	Adjusting the spreading width	475
8.9.4	Folding the chaff spreader open	475
8.9.5	Folding the chaff spreader in	477
8.9.6	Removing the chaff spreader feed pan	477
8.9.7	Installing the chaff spreader feed pan	478
<b>8.10</b>	<b>Uni-spreader</b>	<b>479</b>
8.10.1	Uni-spreader	479
8.10.2	Swinging the uni-spreader to the rear	479
8.10.3	Swinging the uni-spreader to the front	480
8.10.4	Removing the uni-spreader feed pan	480
8.10.5	Installing the uni-spreader feed pan	481
8.10.6	Converting the uni-spreader to grain	481
8.10.7	Converting the uni-spreader to maize	482
<b>8.11</b>	<b>Straw spreader</b>	<b>483</b>
8.11.1	Straw spreader	483
8.11.2	Adjusting the spreading width	483
8.11.3	Fitting the spreader blades	483
<b>8.12</b>	<b>LEXION 560 – 510 sieve charts and suggested combine adjustments (standard cleaning system)</b>	<b>484</b>
8.12.1	LEXION 560 – 510 sieve chart (standard cleaning system)	484
8.12.2	Suggested combine adjustments LEXION 560 – 510 (standard cleaning system)	485

<b>8.13 Disawning</b> .....	<b>491</b>
8.13.1 Disawner plates .....	491
8.13.2 Concave segment .....	492
<b>8.14 Problem, cause and / or remedy – Basic machine</b> .....	<b>493</b>
8.14.1 Front attachment .....	493
8.14.2 Threshing mechanism .....	494
8.14.3 Separation .....	495
8.14.4 Cleaning unit .....	496
8.14.5 Grain delivery .....	497
8.14.6 Straw / Putting down the material .....	499

## 9 Maintenance – Basic machine

<b>9.1 Important maintenance instructions</b> .....	<b>500</b>
9.1.1 Important maintenance instructions and safety rules .....	500
9.1.2 Front attachment .....	500
9.1.3 Correct tension of steel roller chains .....	500
9.1.4 Belts .....	500
9.1.5 Variable-speed drives .....	501
9.1.6 Bolts .....	501
9.1.7 Lubrication .....	501
9.1.8 Brakes .....	502
9.1.9 Wheels / tyres .....	503
9.1.10 Hydraulic system .....	504
9.1.11 Electrical system .....	505
9.1.12 Air conditioner .....	506
9.1.13 Safety guards / spare parts .....	507
9.1.14 Unbalance .....	507
9.1.15 Welding work (up to serial no. ...)	508
9.1.16 Welding work (from serial no. ...)	509
<b>9.2 Maintenance schedules</b> .....	<b>510</b>
9.2.1 Basic machine maintenance schedule .....	510
<b>9.3 Lubricants charts</b> .....	<b>514</b>
9.3.1 Lubricants .....	514
<b>9.4 Hydraulic system</b> .....	<b>517</b>
9.4.1 Accumulators .....	517
9.4.2 Checking the oil level .....	517
9.4.3 Hydraulic oil change .....	518
9.4.4 Changing the hydraulic oil filter .....	519
9.4.5 Saturation of hydraulic oil filter (from serial no. ...)	519
9.4.6 Replacing the return filter (up to serial no. ...)	520
9.4.7 Replacing the return filter (from serial no. ... up to serial no. ...)	521
9.4.8 Replacing the return filter (from serial no. ...)	521
9.4.9 Filling instructions when replacing the hydraulic oil (Sauer 90 R 130 / 90 M 100)	522
9.4.10 Bleeding the cutterbar cross-levelling hydraulic cylinder (machines with Auto Contour) (up to serial no. ...)	523
9.4.11 Bleeding the cutterbar cross-levelling hydraulic cylinder (machines with Auto Contour) (from serial no. ...)	525

<b>9.5</b>	<b>Transmission / Brakes</b> .....	<b>527</b>
9.5.1	Manual gearbox .....	527
9.5.2	Final drive (2-step) .....	528
9.5.3	Final drive 21 t, 1-step .....	529
9.5.4	Final drive gearbox (planetary gear) .....	529
9.5.5	Threshing drum reduction gearbox .....	530
9.5.6	Engine output transfer gearbox .....	531
9.5.7	Grain tank unloading gearbox .....	532
9.5.8	Foot brake and brake fluid .....	532
9.5.9	Parking brake .....	533
<b>9.6</b>	<b>HP feed rake conveyor</b> .....	<b>534</b>
9.6.1	Tensioning the feeder chains .....	534
9.6.2	Cleaning the suction blower (accessory) .....	535
<b>9.7</b>	<b>Standard feed rake conveyor</b> .....	<b>536</b>
9.7.1	Tensioning the feeder chains .....	536
9.7.2	Cleaning the suction blower (accessory) .....	537
<b>9.8</b>	<b>Elevator chains</b> .....	<b>538</b>
9.8.1	Tensioning the grain elevator chain (machine without yield meter) .....	538
9.8.2	Tensioning the grain elevator chain (machine with yield meter / without cock) .....	539
9.8.3	Tensioning the grain elevator chain (machine with yield meter / with cock) .....	539
9.8.4	Relieving the tension of the grain elevator chain (machine with yield meter) .....	540
9.8.5	Tensioning the returns elevator chain .....	541
<b>9.9</b>	<b>Drive belts / drive chains</b> .....	<b>542</b>
9.9.1	General Information .....	542
9.9.2	Drive diagram, left side (LEXION 560 - 510 with standard cleaning system) .....	543
9.9.3	Drive diagram, right side (LEXION 560 - 510 with standard cleaning system) .....	545
9.9.4	Removing the belt (1) .....	547
9.9.5	Installing the belt (1) .....	547
9.9.6	Removing the belt (2) .....	548
9.9.7	Installing the belt (2) .....	550
9.9.8	Removing the belt (3) .....	551
9.9.9	Installing the belt (3) .....	552
9.9.10	Removing the belt (4) .....	554
9.9.11	Installing the belt (4) .....	556
9.9.12	Removing the belt (5) .....	557
9.9.13	Installing the belt (5) .....	559
9.9.14	Removing belt (6) (without torque support) .....	560
9.9.15	Installing belt (6) (without torque support) .....	561
9.9.16	Removing the belt (7) .....	562
9.9.17	Installing the belt (7) .....	564
9.9.18	Removing the belt (8) .....	566
9.9.19	Installing the belt (8) .....	568
9.9.20	Removing the belt (9) .....	569
9.9.21	Installing the belt (9) .....	571
9.9.22	Removing the belt (10) .....	573
9.9.23	Installing the belt (10) .....	574
9.9.24	Removing the chain (11) .....	576
9.9.25	Installing the chain (11) .....	577

9.9.26	Removing the belt (12)	578
9.9.27	Installing the belt (12)	579
9.9.28	Removing the belt (13)	581
9.9.29	Installing the belt (13)	583
9.9.30	Removing the belt (14)	584
9.9.31	Installing the belt (14)	585
9.9.32	Removing the belt (17)	586
9.9.33	Installing the belt (17)	587
9.9.34	Removing the belt (18)	589
9.9.35	Installing the belt (18)	591
9.9.36	Removing the belt (19)	592
9.9.37	Installing the belt (19)	593
9.9.38	Removing the belt (20)	595
9.9.39	Installing the belt (20)	597
9.9.40	Removing the belt (22)	599
9.9.41	Installing the belt (22)	600
9.9.42	Removing the belt (45)	601
9.9.43	Installing the belt (45)	602
9.9.44	Removing the belt (46)	604
9.9.45	Installing the belt (46)	605
9.9.46	Removing the belt (48)	606
9.9.47	Installing the belt (48)	607
9.9.48	Removing the belt (51)	608
9.9.49	Installing the belt (51)	609
9.9.50	Removing the belt (52)	610
9.9.51	Installing the belt (52)	611
9.9.52	Removing the belt (53)	613
9.9.53	Installing the belt (53)	615
9.9.54	Removing the belt (54)	616
9.9.55	Installing the belt (54)	617
9.9.56	Removing the chain (55)	618
9.9.57	Installing the chain (55)	619
9.9.58	Removing the chain (56)	619
9.9.59	Installing the chain (56)	620
9.9.60	Removing the belt (57)	621
9.9.61	Installing the belt (57)	622
9.9.62	Remove belt (58) (CATERPILLAR C-9 / 3126 B)	624
9.9.63	Install belt (58) (CATERPILLAR C-9 / 3126 B)	625
9.9.64	Remove belt (58) (CATERPILLAR C-13 / C-10)	626
9.9.65	Install belt (58) (CATERPILLAR C-13 / C-10)	627
9.9.66	Removing the belt (59)	628
9.9.67	Installing the belt (59)	629
<b>9.10</b>	<b>Cab / air conditioner</b>	<b>630</b>
9.10.1	Cleaning the cab filters	630
9.10.2	Cleaning the units located in the cab roof	630
9.10.3	Cleaning the windscreen and the side windows	631
9.10.4	Cleaning the condenser	632

9.10.5	Checking the refrigerant level . . . . .	632
9.10.6	Replacing the filter receiver drier . . . . .	633
9.10.7	Required refrigerant quantity – refrigerant R 134 a . . . . .	633
9.10.8	Oil for the compressor . . . . .	633
9.10.9	Maintenance work before the harvest . . . . .	633
<b>9.11</b>	<b>Fire extinguisher . . . . .</b>	<b>634</b>
9.11.1	Checking the fire extinguisher . . . . .	634
<b>9.12</b>	<b>Compressed-air system (accessory) . . . . .</b>	<b>635</b>
9.12.1	Compressed-air system . . . . .	635
9.12.2	Compressed-air connections . . . . .	636
9.12.3	Compressed-air gun and woven hose . . . . .	636
9.12.4	Draining the accumulator . . . . .	637
9.12.5	Pressure controller . . . . .	637
9.12.6	Checking the safety valve . . . . .	638
<b>9.13</b>	<b>Straw chopper with radial spreader . . . . .</b>	<b>639</b>
9.13.1	Replacing the free-swinging knives for grain . . . . .	639
9.13.2	Removing the straw guide plate (straw chopper with radial spreader) . . . . .	639
9.13.3	Installing the straw guide plate (straw chopper with radial spreader) . . . . .	640
9.13.4	Removing the free-swinging knives for grain . . . . .	641
9.13.5	Bolting down the free-swinging knives for grain . . . . .	642
9.13.6	Replacing the stationary knives . . . . .	644
<b>9.14</b>	<b>Straw chopper with standard spreader . . . . .</b>	<b>645</b>
9.14.1	Replacing the free-swinging knives for grain . . . . .	645
9.14.2	Removing the straw guide plate (straw chopper with standard spreader) . . . . .	645
9.14.3	Installing the straw guide plate (straw chopper with standard spreader) . . . . .	647
9.14.4	Removing the free-swinging knives for grain . . . . .	648
9.14.5	Bolting down the free-swinging knives for grain . . . . .	648
9.14.6	Replacing the stationary knives . . . . .	651
<b>9.15</b>	<b>Winter storage . . . . .</b>	<b>652</b>
9.15.1	Winter storage instructions for combines . . . . .	652

**10 Maintenance – Engine**

<b>10.1</b>	<b>Important maintenance instructions . . . . .</b>	<b>653</b>
10.1.1	Important maintenance instructions and safety rules . . . . .	653
10.1.2	Cooling water and air intake hoses . . . . .	653
10.1.3	Coolant . . . . .	653
10.1.4	Belts . . . . .	653
10.1.5	Cleaning the engine compartment and hazard areas . . . . .	654
10.1.6	Alternator . . . . .	654
10.1.7	Warranty on non genuine CATERPILLAR products . . . . .	654
10.1.8	Approved engine oils . . . . .	654
10.1.9	Engine oils with dry lubricant additives . . . . .	654
<b>10.2</b>	<b>Maintenance schedules . . . . .</b>	<b>655</b>
10.2.1	Maintenance schedule CATERPILLAR C-10 / C-9 / 3126 B, exhaust gas class 2 . . . . .	655
10.2.2	Maintenance schedule CATERPILLAR C-13 / C-9 / C-6.6, exhaust gas class 3a . . . . .	657
<b>10.3</b>	<b>Lubricants charts . . . . .</b>	<b>659</b>
10.3.1	Lubricants chart CATERPILLAR C-10 / C-9 / 3126 B engines, exhaust gas class 2 . . . . .	659

10.3.2	Cooling system lubricants chart of CATERPILLAR C-10 / C-9 / 3126 B, exhaust gas class 2	660
10.3.3	Lubricants chart of CATERPILLAR C-13, C-9, C-6.6 engines, exhaust gas class 3a	661
10.3.4	Cooling system lubricants chart of CATERPILLAR C-13, C-9, C-6.6, exhaust gas class 3a	662
<b>10.4</b>	<b>Engine overview</b>	<b>663</b>
10.4.1	Engine overview CATERPILLAR C-13	663
10.4.2	Engine overview CATERPILLAR C-10	664
10.4.3	Engine overview of CATERPILLAR C-9 (exhaust gas class 3a)	665
10.4.4	Engine overview of CATERPILLAR C-9 (exhaust gas class 2)	666
10.4.5	Engine overview CATERPILLAR C-6.6	667
10.4.6	Engine overview CATERPILLAR 3126 B	668
<b>10.5</b>	<b>Fuel system / engine oil</b>	<b>669</b>
10.5.1	Fuel system	669
10.5.2	Fuel tank	669
10.5.3	Fuel tank breather (from serial no. ...)	670
10.5.4	Fuel shut-off tap	670
10.5.5	Water separator / fuel prefilter (standard equipment – small version)	670
10.5.6	Water separator / Fuel pre-filter (accessory)	671
10.5.7	Replacing the fuel filter cartridge (CATERPILLAR C-13 / C-10 / C-9 / 3126 B)	672
10.5.8	Replacing the fuel filter cartridge (CATERPILLAR C-6.6)	673
10.5.9	Bleeding the fuel system (CATERPILLAR C-13 / C-10 / C-9 / 3126 B)	674
10.5.10	Manual fuel primer pump with fuel sediment bowl (CATERPILLAR C-6.6)	675
10.5.11	Engine oil level check	676
10.5.12	Engine oil change	676
10.5.13	Draining used oil	677
10.5.14	Oil filter	679
10.5.15	Topping up engine oil	681
<b>10.6</b>	<b>Cooling system</b>	<b>683</b>
10.6.1	Coolant	683
10.6.2	Draining coolant from the water radiator	683
10.6.3	Topping up coolant	684
10.6.4	Identify the coolant type	686
10.6.5	Checking the coolant mixing ratio	687
10.6.6	Changing the coolant	687
10.6.7	Shut down the overheated engine	689
10.6.8	Rotary chaff screen	690
10.6.9	Cleaning the radiator	692
10.6.10	Diesel engine fault	693
<b>10.7</b>	<b>Dry-type air cleaner</b>	<b>694</b>
10.7.1	Dry-type air cleaner in general	694
10.7.2	Warning device	695
10.7.3	Cleaning the air filter intake screen	696
10.7.4	Cleaning the air filter with plastic housing	696
10.7.5	Cleaning the air filter with metal housing	698
10.7.6	Safety filter cartridge	700
10.7.7	Removing and installing safety cartridge (plastic housing)	701

10.7.8 Removing and installing safety cartridge (metal housing) .....	702
<b>10.8 Alternator .....</b>	<b>703</b>
10.8.1 Cleaning the alternator .....	703
<b>10.9 Electrical / electronic equipment .....</b>	<b>704</b>
10.9.1 Battery .....	704
10.9.2 Alternator .....	705
<b>10.10 Problem, cause and / or remedy .....</b>	<b>706</b>
10.10.1 Engine .....	706
<b>10.11 Winter storage .....</b>	<b>708</b>
10.11.1 Engine winter storage .....	708
<b>11 Lubrication chart</b>	
<b>11.1 Lubrication points .....</b>	<b>709</b>
11.1.1 Greasing cycles .....	709
11.1.2 Lubrication points - 10 h on the left .....	712
11.1.3 Lubrication points - 50 h on the left .....	713
11.1.4 Lubrication points - 50 h on the right .....	715
11.1.5 Lubrication points - 100 h on the left .....	716
11.1.6 Lubrication points - 100 h on the right .....	719
11.1.7 Lubrication points - 500 h on the left .....	721
11.1.8 Lubrication points - 500 h on the right .....	722

# 1 Introduction

## 1.1 General Information

102866

### 1.1.1 How to use this manual

This operator's manual is the original operator's manual. In the following texts, it will be referred to simply as the operator's manual.

This operator's manual is intended for all users and provides information on the use, operation, adjustment, maintenance, cleaning and transportation of the machine.

Provided all instructions regarding proper maintenance and operation of your machine are followed, you can count on many years of reliable service.

Failure to perform maintenance or incorrect operation lead to an increased safety risk, premature wear, a reduction in performance, loss of earnings and time. Have the post harvest check / annual check performed regularly by your CLAAS dealer. A combination of the prescribed maintenance work with the post harvest check is recommended.

If you use the latest expertise and experience that went into this machine, it will render you consistently excellent service.

There is a separate operator's manual for front attachments and hitched devices.

#### Texts and figures





Pictures and graphics are neutral. Differences are pointed out by notes beneath the figure.

Texts are short and not machine-specific as far as possible. Differences are pointed out by intermediate headings.

Different types of texts can easily be distinguished from one another by their formats. The following formats are distinguished:

<b>Formatting</b>	<b>Meaning</b>	<b>Description</b>
Description	Text	Further information on the subject.
– Instructions	Operation	Operations which must be carried out one after the other.
<i>Result</i>	Result	Consequence of operations carried out.

References can easily be distinguished by suitable symbols. The following symbols are distinguished:

Symbol	Meaning	Description
	See index	The symbol  indicates that further information on this subject can be found at another point in this manual.
	See index of the relevant Operator's manual	The symbol  indicates that further information on this subject can be found in the Operator's manual of that machine or equipment.

**Document structure based on subassemblies**

As far as the contents permit, the chapters of this manual are structured according to subassemblies. The structure of these subassemblies is the same in all chapters.

Different product groups have different document structures based on subassemblies. CLAAS always takes care to keep these document structures based on subassemblies identical in any documents.

**Search and find**

The wanted subject can easily be found with the recurring subassembly structure, using the table of contents or the header line of this manual.

In addition, the index of this manual is a useful tool for locating a specific subject. The index can be found on the last pages of this manual.

**Directions**

Text elements such as front, rear, right and left always apply to the direction of travel. In figures, the direction of travel may be indicated by a direction arrow.

**Optional equipment and accessories**

Optional equipment includes equipment variants of the machine where different variants are available, but only one variant can be fitted.

Accessories are equipment items that may be additionally fitted to the machine, but are not included in the standard scope of the machine.

Both terms designate possible variants. Standard scopes and equipment variants may differ in other countries.

*Your CLAAS Service Department*

### 1.1.2 Validity of instructions

The present Operator's Manual applies to the following machine / front attachment:

Designation	Type	Machine serial number	
		from	to
LEXION 560	584	58400011	–
LEXION 550	584	58400011	–
LEXION 540	584	58400011	–
LEXION 540 C	584	58400011	–
LEXION 530	583	58300011	–
LEXION 520	583	58300011	–
LEXION 510	583	58300011	–

## 2 General Information

### 2.1 Road traffic

In addition to his driving licence, the operator must always carry the copy of the vehicle type approval registration issued by the Kraftfahrt-Bundesamt (the German Federal Motor Vehicle Executive). A warning triangle and, on machines over 4 t permissible total weight, at least one wheel chock must always be carried on the combine.

When driving on public roads with the combine harvester comply with all the requirements stated under letter C in the copy of the vehicle type approval registration (§ 18 Section 5 StVZO) issued by the Kraftfahrt-Bundesamt.

On machines with excess width (width over the tyres), a vehicle type approval registration for individual vehicles (single expert opinion) and a special approval in accordance with § 70, Section 1, clauses 1 and 2 of the StVZO must be carried instead of the General Operating Permit. Furthermore, all the requirements stated in the vehicle type approval registration for individual vehicles and in the special approval must be observed. The issue of a special approval differs from country to country. The excess width must be marked in accordance with the regulations for marking of excess-width road vehicles (e.g. two marker boards at the front and the rear each, protective bar, two amber flashing warning beacons).

If any part(s) of the combine harvester is/are subsequently modified whose condition is/are prescribed or the operation of which (after being modified) could represent a hazard to other road users, then the vehicle type approval registration shall no longer be valid and application must be made for a new vehicle type approval registration. In this case the machine must be presented to the motor vehicle safety inspection authority responsible (e.g. TÜV) in order to obtain an expert opinion certificate (§ 19 section 2 StVZO).

If you are in any doubt as to whether this situation applies in your case, please contact us as manufacturers.

If a transport vehicle for front attachments is towed behind the combine harvester, then the cable for the lighting system must be connected and the good condition of the lighting system assured.

If the combine is equipped with a maize picker head or folding cutterbar, the regulations and requirements of the machine's General Operating Permit must be observed, in particular the requirements concerning ballast weights and tyres.

### **Registration**

As a self propelled working machine with a maximum speed **of more than 20 km/h**, the combine is subject to registration and needs to have licence plates fitted.

As a self propelled working machine with a maximum speed **of up to 20 km/h**, the combine is not subject to registration and does not need to have licence plates fitted.

The machine must be clearly and indelibly marked on the left side with the Christian name and surname of the owner and his address.

The towing of trailers in the trailer hitch when driving on public roads is **not** permitted.

Road traffic regulations may vary between countries. In case of discrepancies between the instructions provided by the manufacturer and the traffic regulations of the relevant countries, the traffic regulations of the countries concerned apply.

## **2.2 Important notice**

The instructions contained in this manual should be carefully read and observed by all persons involved with the operation, maintenance and inspection of this machine in order to prevent accidents. In particular, read the section "Safety rules".

The use of spare parts, accessories and ancillary equipment other than genuine CLAAS products or those which have been tested and approved by CLAAS, may change the specified design characteristics of this CLAAS machine or detract from its functional performance, with a possible adverse effect on the active and/or passive operational safety of the machine and its occupational safety standards (accident prevention).

CLAAS is in no way liable for any damage or personal injury caused through the use of other than original or approved CLAAS parts, accessories and ancillary equipment.

Technical data, dimensions and weights are given as an indication only. CLAAS reserves the right to make changes subsequently as technical developments continue. Responsibility for errors or omissions is not accepted.

Front, rear, right and left refer to the direction of forward travel.

## 2.3 Identification plate / Serial number

### 2.3.1 Identification plate / Serial number

The diagram shows a rectangular identification plate with the following fields and callouts:

- A:** Points to the 'Appellation commerciale' field.
- B:** Points to the 'Typ/Type' field.
- C:** Points to the 'Ident.Nr.' field.
- D:** Points to the 'Zul.Ges. Gewicht' field.
- E:** Points to the 'charge maximale admissible à L'avant' field.
- F:** Points to the 'auj. année' field.
- G:** Points to the 'kW' field.
- H:** Points to the 'charge maximale admissible à L'arrière' field.
- I:** Points to the '24 R-03' approval code field.
- J:** Points to the 'Absorption coefficient' field.

At the bottom of the plate, it reads: 'RECEPTION à la DRIRE' and 'CLAAS Selbstfahrende Erntemaschinen GmbH 33428 Harsewinkel, Made in Germany'.

603008

3903

1

	Designation
A	Equipment options
B	Maximum admissible total weight
C	Type
D	Identification no. (machine serial number)
E	Maximum admissible load on front axle
F	Year of construction
G	Rated capacity of engine (kW)
H	Maximum admissible load on rear axle
I	Approval no. according to ECE-R 24
J	Absorption coefficient according to ECE-R 24

(Fig. 1)

66258

When ordering spare parts and in case of technical questions, indicate the machine number of the CLAAS combine and when the engine, front attachments, cutterbar and maize picker are concerned, also the respective serial numbers.

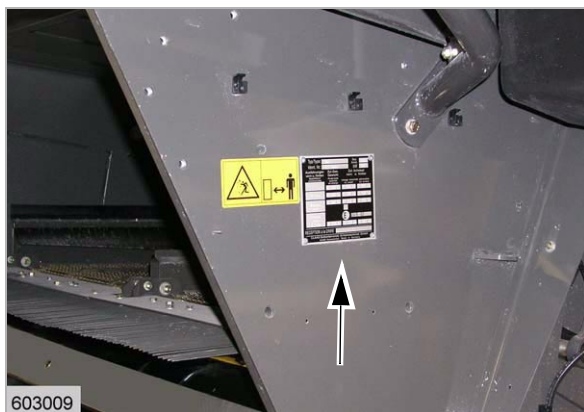
This is necessary as otherwise, incorrect spare part deliveries may result.

5873

**2.3.2 Identification plate**

The identification plate of the machine is located on the right hand side above the rear axle.

*(Fig. 2)*



2

9502

5874

**2.3.3 Machine serial number**

The machine serial number is stamped on the engine frame underneath the operator's platform on the right hand side of the machine.

*(Fig. 3)*



3

3907

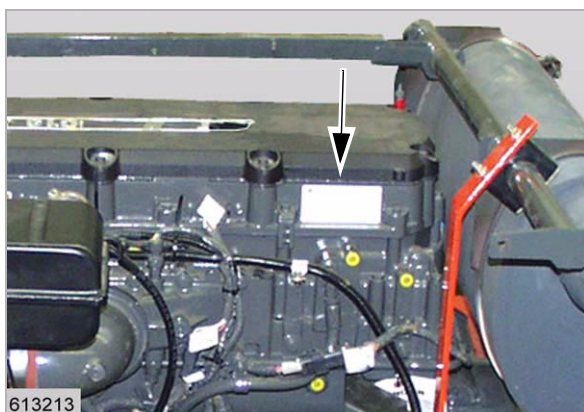
24873

**2.3.4 Engine serial number**

**CATERPILLAR C-13, exhaust emission level 3a**

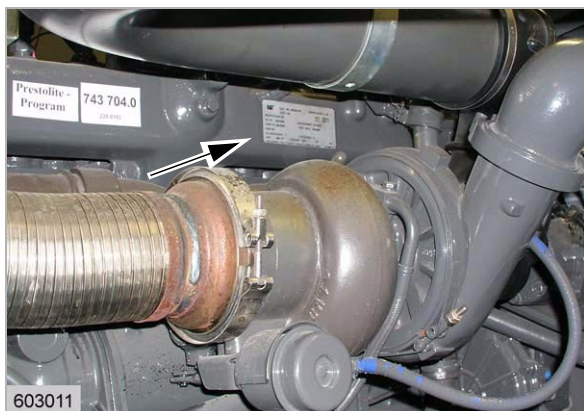
Engine number: MDB ...

*(Fig. 4)*



4

4803



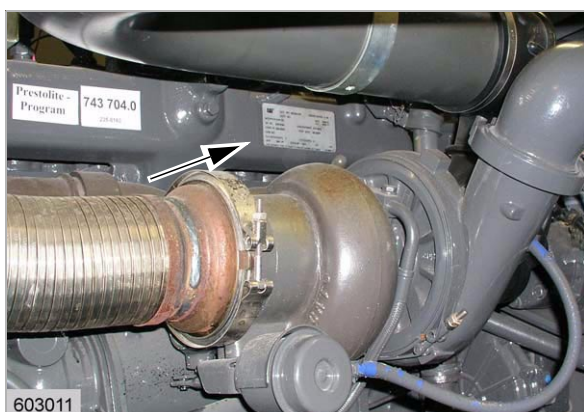
8413

5

### CATERPILLAR C-10

The identification plates showing the engine serial no. are attached above the turboblower.

(Fig. 5)



8413

6

### CATERPILLAR C-9, exhaust emission level 2

Engine no: CLJ ...

The identification plates showing the engine serial no. are attached above the turboblower.

(Fig. 6)



9506

7

### CATERPILLAR C-9, exhaust emission level 3a

Engine number: MDB ...

The identification plates showing the engine serial no. are attached above the turboblower.

(Fig. 7)



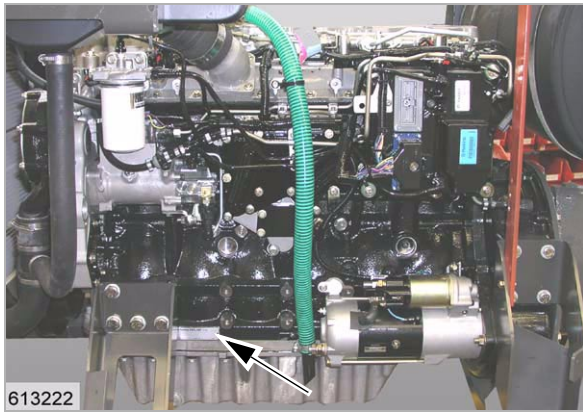
9505

8

### CATERPILLAR 3126 B

The identification plates showing the engine serial no. are attached to the valve cover.

(Fig. 8)



9300

9

**CATERPILLAR C-6.6**

*(Fig. 9)*



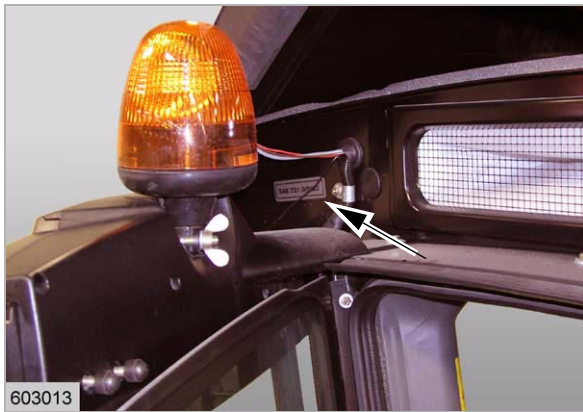
3909

10

**2.3.5 Straw chopper identification plate**

The chopper serial number is provided on the left hand side panel.

*(Fig. 10)*



3910

11

**2.3.6 Cab serial number**

The cab serial number is located at the top of the left hand side, at the rear of the frame.


*(Fig. 11)*

## 2.4 Attachment parts / machine body

107692

### 2.4.1 Access to the workplace and maintenance areas

The operator's workplace / driver's seat (1) is in the machine cab. The operating elements in the workplace are used to start or shut down the machine.



The machine maintenance areas allow maintenance  or adjustment work to be performed.



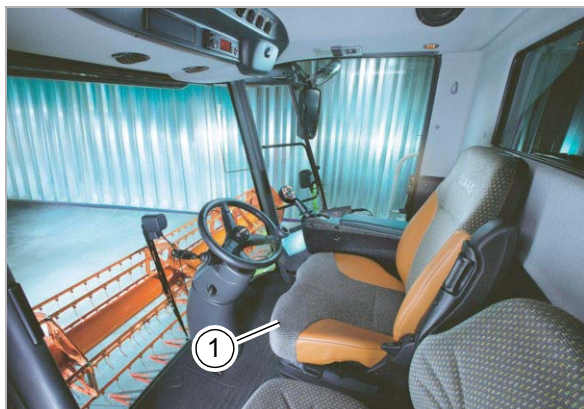
#### Danger!

Danger of falling!

Death or serious injuries!

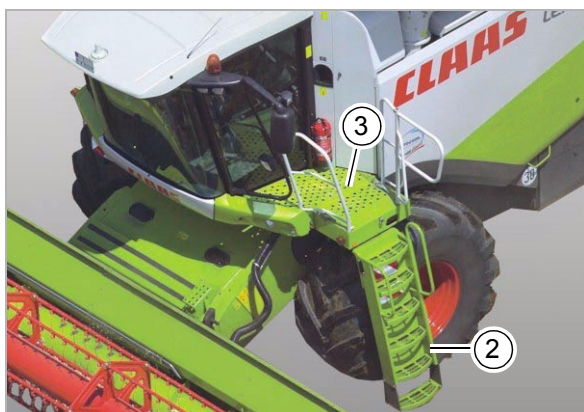
- Only enter areas that are designated as workplaces  or maintenance areas  and are secured by railings or similar.
- Other areas must be secured by additional rails / safety measures before they are entered.

12



39598

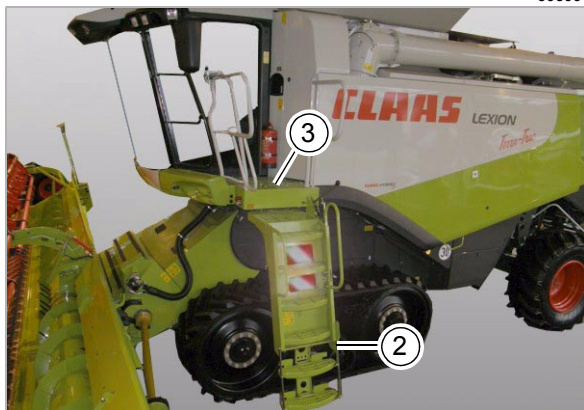
13



LEXION 560-510

39599

14



LEXION 560 Terra-Trac

39601

Thank you so much for reading.  
Please click the “Buy Now!”  
button below to download the  
complete manual.



After you pay.

You can download the most  
perfect and complete manual in  
the world immediately.

Our support email:

[ebooklibonline@outlook.com](mailto:ebooklibonline@outlook.com)