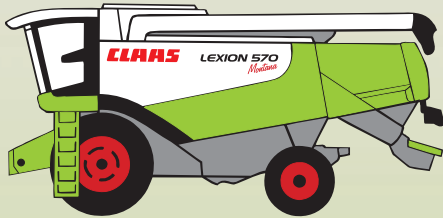


CLAAS



LEXION 570 MONTANA

Operator's Manual

SERVICE & PARTS

CONTENTS

1. Introduction

Introduction 1.1.1

2. Contents

Contents 2.1.1

3. General information

Road traffic regulations 3.1.1
 Important notice 3.2.1
 Identification plate / Serial number 3.3.1
 Identification plate 3.3.2
 Machine serial number 3.3.2
 Engine serial number
 CATERPILLAR C-12 3.3.2
 Straw chopper identification plate 3.3.3
 Cab serial number 3.3.3

4. Safety Rules

Safety Rules 4.1.1
 Cylinder safety lock 4.1.4
 Fire extinguisher 4.1.4
 Battery isolating switch 4.1.5
 Wheel chocks 4.1.5
 Positioning the wheel chocks 4.1.5
 Hydraulic system 4.1.6
 Danger of injury due
 to escaping hydraulic liquid 4.1.6
 Accumulators 4.1.7
 Relieving the Auto-Contour accumulator 4.1.7
 Relieving the Autopilot accumulator 4.1.7
 Relieving the concave adjustment accumulator 4.1.8
 Relieving the radial spreader accumulator 4.1.9
 Relieving the standard spreader accumulator 4.1.10
 Safety decals with pictorials 4.2.1

5. Specifications

Conversion factors 5.1.1
 CLAAS LEXION 570 Montana 5.2.1
 Front attachments –
 weights and dimensions 5.2.8
 Safety features 5.3.1

6. Prior to operation

Carry out prior to initial operation 6.1.1
 Cab 6.2.1
 Cab with automatic climate control 6.2.1
 Automatic climate control 6.2.2
 Operating and display elements 6.2.2
 Putting the automatic climate control
 into operation 6.2.3
 Setting the cab temperature 6.2.4
 Manually setting the evaporator
 blower speed 6.2.4
 Activating ECON operating mode 6.2.5
 Deactivating ECON operating mode 6.2.5

REHEAT operation
 (Dehumidify cab windows) 6.2.6
 Displaying the outside temperature 6.2.7
 Changing the temperature display
 to °Fahrenheit 6.2.7
 Floor heating 6.2.7
 Display of malfunction:
 error in thermometer F0
 (cab, blue) 6.2.8
 Display of malfunction:
 error in thermometer F1
 (exhaust, yellow) 6.2.8
 Display of malfunction:
 error in thermometer F2
 (outside, red) 6.2.8
 Cab with air conditioner
 (standard version) 6.2.9
 Putting the air conditioning system
 into operation 6.2.10
 Heater 6.2.12
 Floor heating 6.2.12
 Reheat system
 (Steamed up windows) 6.2.12
 Malfunction, possible cause or remedy –
 air conditioner system 6.2.13
 Cooling box 6.2.15
 Cooling unit
 (option) 6.2.15
 Cooling bag
 (option) 6.2.15
 Ice bucket
 (option) 6.2.15
 Windscreen washer 6.2.16
 Crop inspection 6.2.16
 Opening and closing the cab roof 6.2.16
 Operator's platform 6.3.1
 Operator's platform overview 6.3.1
 Control console 6.3.3
 Monitor
 (vehicle information display) 6.3.4
 Monitor
 (harvest display) 6.3.5
 C-keys 6.3.6
 Rotary switch D 6.3.6
 Slope compensation 6.3.7
 Slope compensation control box 6.3.8
 Monitor 6.3.9
 Machine operation 6.3.10
 Axle (wheel angle) 6.3.10
 Cutterbar 6.3.10
 Axle (wheel angle) and cutterbar 6.3.11
 Menu 6.3.13
 Cutterbar adjustment key pad (yellow) 6.3.13
 Axle adjustment key pad (green) 6.3.13
 Calibration 6.3.14
 Calibrating the inclinometer 6.3.14
 Calibrating the wheel rams 6.3.15

Calibrating the cutting angle	6.3.15	Altering the 2.71 m – 3.16 m rear axle	
Calibrating the cross levelling	6.3.15	from transport to working position	6.8.8
Calibrating the trunking		Adjusting the track width	6.8.9
(feeder housing)	6.3.16	Additional weights of rear axle	6.9.1
Setup	6.3.17	Additional weights of rear axle	
System info	6.3.18	LEXION 570 Montana	6.9.1
Inclinoinfo	6.3.18	Liquid filling for rear axle tyres	6.9.2
Steering column	6.3.19	Mounting the rear axle weight	6.9.2
Ignition switch	6.3.19	Cutterbar hydraulic cylinders	6.10.1
Multi-function switch	6.3.20	Cutterbar hydraulic cylinders	6.10.1
Vehicle information unit	6.3.21	Third cutterbar cylinder	6.10.1
Multi-function handle	6.3.22	Grain tank	6.11.1
Steering column adjustment	6.3.23	Closing the grain tank drain holes	6.11.1
Adjusting the steering column top	6.3.23	Driving the combine	6.12.1
Steering wheel height adjustment	6.3.24	Checking the control lights	6.12.1
Central terminal compartment	6.3.24	Driving the combine	6.12.1
Fuses	6.3.26	Engine speed rotary switch	6.12.1
Relays	6.3.28	Average engine idle speed	6.12.2
Operator's seat	6.3.30	Starting the engine	6.12.2
Operator's seat, mechanical	6.3.30	Stopping the engine	6.12.3
Operator's seat "air suspension"		Gear selection	6.12.3
(option)	6.3.33	Manoeuvring	6.12.4
Lighting and socket outlets	6.4.1	Hydrostatic ground drive	6.12.4
Headlights, worklights, mirrors	6.4.1	Adjusting the stiffness	
Sidefinder		of ground speed control lever	6.12.5
(option)	6.4.6	Stopping	6.12.5
Pathfinder lighting	6.4.6	Driving behaviour	6.12.5
Side position lights in case of excess width	6.4.7	Handling with cutterbar trailer	6.12.6
Socket outlets	6.4.11	Steering	6.12.6
Access ladder	6.5.1	Brakes	6.12.6
Access and ladder extension	6.5.1	Foot brake	6.12.6
Front ladder	6.5.2	Parking brake	6.12.7
Mounting the ladder	6.5.2	Releasing the parking brakes mechanically	6.12.8
Folding the ladder steps	6.5.6	Gear shifting – Emergency operation	6.12.8
Swinging the ladder	6.5.6	Turn gears into "0" (neutral position)	6.12.8
Rear ladder	6.5.8	Towing the machine	6.12.9
Other uses of the rear ladder	6.5.9	Differential lock	6.12.9
Side panels	6.6.1	Engaging the differential lock	6.12.9
Opening and closing the side panels		Disengaging the differential lock	6.12.9
and the tailgate	6.6.1	CLAAS Autopilot	
Opening the tailgate	6.6.2	(Maize picker head)	6.13.1
Adjusting the gripping height		Putting the CLAAS Autopilot into operation	6.13.1
of the side panels	6.6.2	CLAAS Autopilot	
Adjusting the side panel lock	6.6.3	(Grain cutterbar)	6.13.3
Tool cabinet	6.6.3	Adjusting the directional stability	
Toolbox	6.6.3	of the combine harvester	6.13.3
Folding down the tool cabinet	6.6.4	Setting the laser sensor in the field	6.13.5
Fender / Mud-guards	6.7.1	Rough adjustment	6.13.6
Installing the fenders / mud-guards	6.7.1	Fine adjustment	6.13.7
Rear axles	6.8.1	Laser sensor	
Adjustable rear drive axle		(crop edge has moved out of visible range)	6.13.7
(2.60 m – 3.20 m)	6.8.2	Setting up the right-hand laser sensor	
Altering the adjustable 2.60 m – 3.20 m		(accessory)	6.13.8
rear drive axle from transport		Putting the CLAAS Autopilot into operation	6.13.9
to working position	6.8.2	Use in rape with left-hand side cutter	6.13.10
Adjusting the track width	6.8.4	Malfunction, possible cause or remedy –	
Rear axle		Slope compensation	6.14.1
(2.71 m – 3.16 m)	6.8.8		

7. Installing and removing the cutterbar

Installing the cutterbar	7.1.1
Tilting the cutterbar from transport position	7.1.1
Adjusting the hydraulic cylinder for transverse cutterbar control	7.1.2
Machines equipped with Auto Contour	7.1.2
Locking cutterbars and maize pickers (Cutterbars without Auto Contour)	7.1.4
Connecting the universal drive shaft	7.1.5
Mounting the stands	7.1.6
Removing the cutterbar	7.2.1
Removing the universal coupling	7.2.1
Removing the universal drive shaft	7.2.1
Opening the cutterbar locking	7.2.2
Laying down the cutterbar on the ground	7.2.2
Placing the cutterbar on the cutterbar trailer	7.2.2

8. Operation CEBIS

Contents	8.1.1
CLAAS on-board information system (CEBIS)	8.2.1
CEBIS Monitor and rotary switch	8.2.3
C-keys	8.2.3
Rotary switch D	8.2.3
Multifunctional handle M	8.2.3
Window sections E (Harvest display)	8.2.3
Flagging box	8.2.3
Rotary switch D	8.2.6
Prior-to-initial operation	8.2.7
Vehicle information display	8.2.9
Harvest display	8.2.9
Yield mapping	8.2.10
Flagging	8.2.11
GPS	8.2.13
Mapping ON/OFF	8.2.13
Mapping monitor	8.2.13
Load GPS data	8.2.13
Presettings reel	8.2.15
Reel horizontal position	8.2.15
Reel speed	8.2.15
Reel height	8.2.17
Presettings front attachment	8.2.19
Clearance between snapping plates	8.2.19
Cutterbar table length	8.2.19
Cutting height settings (CAC)	8.2.21
Cutting height settings for LEXION Montana	8.2.23
Partial width selection	8.2.25
Yield meter	8.2.26
Componentes	8.2.26
Basic setting and calibration	8.2.26
Preparation for yield measurement	8.2.27
Moisture measurement ON/OFF, moisture correction, storage moisture	8.2.27
Quick guide to accurate measuring data	8.2.27
Yield measurement	8.2.29
Calibration factor	8.2.29

Set zero yield	8.2.29
Test-weighing	8.2.31
Weight measured	8.2.31
Moisture correction	8.2.31
Moisture measurement ON/OFF	8.2.31
Set zero angle	8.2.33
Storage moisture	8.2.33
Display dry yield	8.2.33
Setting combine to type of crop	8.2.35
List of threshable crops	8.2.35
Load CLAAS adjustments	8.2.35
Load own adjustments	8.2.37
Save own adjustments	8.2.37
Print machine adjustments	8.2.37
Display of CLAAS adjustments	8.2.37
Display of own adjustments	8.2.37
Cleaning by blowing	8.2.39
Recording harvest work	8.2.41
Planned work records	8.2.41
Next planned work record	8.2.41
Previous planned work record	8.2.43
New planned work record	8.2.43
Change a planned work record	8.2.43
Start / Stop	8.2.45
Completed work records	8.2.47
Next or previous completed work record	8.2.47
Restart a completed work record	8.2.47
Printer	8.2.47
Area correction	8.2.47
Daily recorder	8.2.49
Printing daily recordings	8.2.49
Clear daily recordings	8.2.49
Total recorder	8.2.51
Printing recorder summaries	8.2.51
Crop recorder	8.2.51
Copy the chip card	8.2.53
Adjustments	8.2.55
Cutterbar	8.2.55
Sensitivity CAC	8.2.55
Cutterbar upper and lower limits	8.2.57
Partial width proportions	8.2.57
Working position	8.2.57
Working width	8.2.59
Auto reel height	8.2.59
Reel end stops	8.2.59
Cutterbar automatics	8.2.61
Cutterbar table length stops	8.2.61
Fore & aft reel adjustment stops	8.2.61
Vario automatics ON/OFF	8.2.63
Snapping plate end stops	8.2.63
Speeds	8.2.65
Learning speeds	8.2.65
Learning max. no-load speed	8.2.65
Belt slip limit indicator	8.2.67
Chaff spreader speed monitor	8.2.67
Returns elevator speed monitor	8.2.67
Tachometer	8.2.69
Calibration run	8.2.69

Impulses/100	8.2.69	Front attachment QUICK STOP	
Sensitivity Autopilot	8.2.71	(Switch console)	9.1.8
Zero Autopilot front attachment	8.2.71	Disengaging the front attachment	
Zero steering	8.2.71	(Multi-function handle)	9.1.9
Separation	8.2.73	Front attachment QUICK STOP	
Sensor test	8.2.73	(Multi-function handle)	9.1.9
Upper and lower sieve end stops	8.2.73	Threshing mechanism	9.2.1
Upper and lower sieve adjustment	8.2.75	Stone trap	9.2.1
Returns limit	8.2.75	Engaging the threshing mechanism	9.2.2
Set zero returns	8.2.75	Disengaging the threshing mechanism	9.2.2
CEBIS	8.2.77	Threshing drum	9.2.3
Language	8.2.77	Cleaning the threshing mechanism	9.2.3
Date/Time	8.2.79	Concave setting	9.2.4
Display positive/negative	8.2.79	Central concave re-adjustment	9.2.4
Measuring units	8.2.81	Re-adjusting the left-hand concave	9.2.5
Version	8.2.81	Adjusting the oil pressure of the concave	
Own display	8.2.83	adjustment accumulators	9.2.6
Maintenance	8.2.85	Basic concave setting	9.2.7
XXh OK	8.2.85	Adjusting the concave position sensor	9.2.18
XXh service list	8.2.85	Threshing drum speed	9.2.19
Operator's manual	8.2.87	Drum drives	9.2.19
Basic settings	8.2.87	Two-step variable-speed drive	9.2.19
Guide to adjustments	8.2.89	Removing and installing	
Problems/Remedies	8.2.89	the preconconcave segments	9.2.20
CEBIS	8.2.91	Concave segment	9.2.21
Check list	8.2.91	Removing the concave segment	9.2.21
Safety rules	8.2.91	Installing the concave segment	9.2.22
Code protection	8.2.93	Disawning	9.2.23
Engine load	8.2.95	Unslugging the threshing drum	9.2.23
Engine diagnosis	8.2.95	Axial rotors	
Alarms	8.2.96	LEXION 570 Montana	9.3.1
Alerts	8.2.96	Axial rotors	9.3.1
Problems / remedies - yield meter	8.2.97	Axial rotor variable-speed drive	
Guide for impulses / 100 m	8.2.98	(optional equipment)	9.3.1
9. Operation –		Axial rotors step drive	9.3.2
basic machine		Closing the separating grates	9.3.4
Feeder housing	9.1.1	Replacing the separating grates	
Feeder chains	9.1.1	by dummy concaves	
Threshing drum door	9.1.2	(optional equipment)	9.3.4
Front attachment reverser	9.1.3	Closing the separating grates electrically	
Front attachment floatation springs	9.1.3	by means of flaps	
Checking the setting		(optional equipment)	9.3.4
of the floatation springs	9.1.3	Removing and installing the dummy	
Cutting height indicator	9.1.5	concaves / separating grates	9.3.5
Spring pressure indicator	9.1.5	Removing the dummy concaves /	
Blocking the front attachment		separating grates	9.3.5
floatation springs		Installing the dummy concaves /	
(Mechanical lock)	9.1.6	separating grates	9.3.8
Unlocking the front attachment		Warning signal	9.3.8
floatation springs		Cleaning unit	9.4.1
(Mechanical lock)	9.1.6	Sieve pan	9.4.1
Adjusting the drop rate		Preparation floor	9.4.1
of the front attachment	9.1.6	Frogmouth sieves	9.4.2
Engaging the front attachment		Electric sieve adjustment	9.4.2
(Switch console)	9.1.7	Removing the sieves	9.4.3
Disengaging the front attachment		Removing the upper sieves	9.4.3
(Switch console)	9.1.8	Removing the lower sieves	9.4.5
		Installing the sieves	9.4.6

Tightening torques of axial mountings for the upper and lower sieves	9.4.6	Adjusting the length of cut	9.6.6
Sieves – Basic setting	9.4.7	Activating the rasp bar (optional extra)	9.6.7
Harvesting without lower sieves	9.4.8	Adjusting the spreading width of radial spreader	9.6.7
Covering the returns pan	9.4.8	Adjusting the spreading width centre of radial spreader	9.6.8
Cleaning fan	9.4.9	Straw chopper with standard spreader	9.6.9
Fan speed adjustment	9.4.9	Putting the straw chopper into operation (Swing standard spreader to chopping position)	9.6.9
Under-ventilated cleaning step	9.4.9	Putting the straw chopper out of operation (Swing standard spreader to swathing position)	9.6.10
Adjustment of primary pre-separation duct deflector	9.4.9	Swinging the standard spreader to cutterbar trailer transport position	9.6.10
Wind board	9.4.10	Adjusting the cross blade	9.6.11
Fan shutters for combining grass seed and other special crops (optional extra)	9.4.10	Adjusting the length of cut	9.6.12
Dynamic slope compensation (3-D cleaning system)	9.4.11	Activating the rasp bar (optional extra)	9.6.13
Returns	9.4.12	Adjusting the spreading width of standard spreader	9.6.13
Inspecting the returns	9.4.12	Adjusting the height of standard spreader	9.6.14
Combine performance monitor	9.4.13	Adjusting the spreading width centre of standard spreader	9.6.15
Rotor sensors	9.4.13	Reducing the chopper speed	9.6.16
Sieve pan sensor	9.4.14	Chaff spreader / straw spreader	
Grain delivery	9.5.1	LEXION 570 Montana	9.7.1
Augers and auger troughs	9.5.1	Chaff spreader	
Elevators	9.5.2	LEXION 570 Montana	9.7.1
Grain tank	9.5.3	Folding the chaff spreader open	9.7.2
Safety decal (0516 275.1)	9.5.3	Folding the chaff spreader in (Working position)	9.7.3
Grain tank extension	9.5.3	Straw spreader	
Unloading the grain tank	9.5.4	LEXION 570 Montana	9.7.4
Emergency unloading grain tank cover	9.5.5	Adjusting the spreading width	9.7.4
Grain tank unloading aid (optional extra)	9.5.5	Fitting the spreader rotors	9.7.4
Grain tank unloading tube	9.5.6	Sieve chart and suggested combine adjustments	
Swinging the grain tank unloading tube out and in	9.5.6	LEXION 570 Montana	9.8.1
Grain tank unloading tube transport position	9.5.7	Sieve chart	
Cleaning covers on the grain tank unloading tube	9.5.8	LEXION 570 Montana	9.8.1
Shear bolt for grain tank unloading	9.5.8	Suggested combine adjustment	
Engaging and disengaging the grain tank unloading	9.5.9	LEXION 570 Montana	9.8.2
Grain tank access	9.5.9	Disawner plates	9.8.8
Automatic chain lubrication – grain tank unloading (optional extra)	9.5.10	Concave segment	9.8.8
Straw chopper		Malfunction, cause and / or remedy – Basic machine	9.9.1
LEXION 570 Montana	9.6.1	10. Maintenance – basic machine	
Straw chopper	9.6.1	Important maintenance instructions	10.1.1
Before using the chopper for the first time, check	9.6.1	Important maintenance instructions and safety rules	10.1.1
Straw chopper with radial spreader	9.6.2	Maintenance schedules and lubricants charts	10.2.1
Putting the straw chopper into operation (Swing radial spreader to chopping position)	9.6.3	Maintenance schedules	10.2.1
Putting the straw chopper out of operation (Swing radial spreader to swathing position)	9.6.4	Lubricants charts	10.2.4
Swinging the radial spreader to cutterbar trailer transport position	9.6.5	Hydraulic system	10.3.1
Adjusting the cross blade	9.6.5	Accumulators	10.3.1
		Checking the oil level	10.3.1
		Changing hydraulic oil	10.3.2

Changing the hydraulic oil filter	10.3.3	Drive system diagram, right-hand side	
Changing the return flow filters	10.3.3	(LEXION 570 Montana)	10.8.3
Filling instructions when carrying out		Drive belts, drive chains	10.8.3
hydraulic oil change		Front attachment drive 2nd step	
(Sauer 90 R 130 / 90 M 100)	10.3.4	(without variable-speed drive) –	
Bleed hydraulic cylinders		Tensioning belt (2)	10.8.4
for lateral levelling of cutterbar	10.3.4	Front attachment drive 3rd step	
Gearboxes	10.4.1	(with variable-speed drive) –	
2-speed manual gearbox	10.4.1	Tensioning belt (3)	10.8.5
Checking the oil level	10.4.1	Impeller drive – Tensioning belt (5)	10.8.6
Oil change	10.4.1	Reel hydraulic pump drive –	
Differential and axle support	10.4.2	Tensioning belt (6)	10.8.7
Checking the oil level	10.4.2	Front attachment drive 1st step –	
Oil change	10.4.2	Tensioning belt (7)	
Wheel pivots	10.4.3	(without front attachment QUICK STOP)	10.8.8
Checking the oil level	10.4.3	Front attachment drive 1st step –	
Oil change	10.4.3	Tensioning belt (7)	
Final drives		(with front attachment QUICK STOP)	10.8.9
(Planetary gear)	10.4.3	Straw /chaff / radial spreader	
Checking the oil level	10.4.3	hydraulic pump drive –	
Oil change	10.4.3	Tensioning belt (8)	10.8.10
Threshing drum reduction gearbox	10.4.4	Threshing mechanism drive –	
Oil change	10.4.4	Tensioning belt (9)	10.8.11
Checking the oil level	10.4.4	Grain tank unloading drive 1st step –	
Transfer gearbox		Tensioning belt (10)	10.8.12
(Engine)	10.4.5	Grain tank unloading drive 2nd step –	
Checking the oil level	10.4.5	Removing chain (11)	10.8.14
Oil change	10.4.5	Grain tank unloading drive 2nd step –	
Grain tank unloading gearbox	10.4.5	Installing and adjusting chain (11)	10.8.15
Checking the oil level	10.4.5	Straw chopper drive 1st step –	
Oil change	10.4.5	Tensioning belt (12)	10.8.16
Rotor drives	10.4.6	Straw chopper drive 2nd and 3rd step –	
Checking the oil level	10.4.6	Tensioning belts (13) and (14)	10.8.17
Oil change	10.4.6	Sieve pan drive 1st step –	
Lubricate ball-bearing slewing rings		Tensioning belt (18)	10.8.19
of wheel pivots	10.4.7	Sieve pan drive 2nd step –	
Ball-bearing slewing rings		Tensioning belt (19)	10.8.20
greasing instructions	10.4.8	Sieve pan drive 3rd step –	
Feeder housing	10.5.1	Tensioning belt (20)	10.8.21
Tension feeder chains	10.5.1	Axial rotors step drive 2nd step –	
Adjusting the sensor		Tensioning belt (40)	10.8.22
for the cutting angle adjustment	10.5.1	Axial rotors drive 1st step –	
Cleaning the suction blower		Tensioning belt (42)	10.8.23
(accessory)	10.5.2	Fan drive 1st step –	
Drive axle	10.6.1	Tensioning belt (46)	10.8.24
Adjusting the sensor		Rotary radiator screen suction blower drive –	
for the wheel pivots	10.6.1	Tensioning belt (51)	10.8.25
Elevator chains	10.7.1	Threshing drum drive –	
Tensioning the grain elevator chain		Tensioning belt (53)	10.8.26
(Combines without yield meter)	10.7.1	Accelerator drive –	
Tensioning the grain elevator chain		Tensioning belt (54)	10.8.27
(Combines with yield meter)	10.7.1	Rotary radiator screen drive –	
Tensioning the returns elevator chain	10.7.2	Tensioning belt (57)	10.8.28
Drive belts / drive chains – basic machine	10.8.1	Cab / Air conditioner	10.9.1
General Information	10.8.1	Cab	10.9.1
Drive diagram, left-hand		Cleaning the filters	10.9.1
(LEXION 570 Montana)	10.8.2	Cleaning the units located in the cab roof	10.9.1
Drive belts, drive chains	10.8.2	Cleaning the cab screens	10.9.2

Air conditioner	10.9.3	Cooling system	11.5.1
Cleaning the condenser	10.9.3	Coolant	11.5.1
Checking refrigerant level	10.9.3	Water drain plugs on the engine block	11.5.1
Replacing the filter receiver drier	10.9.4	Radiator	11.5.2
Required refrigerant quantity – refrigerant R 134 a	10.9.4	Filling the cooling system with coolant	11.5.2
Oil for the compressor	10.9.4	Overpressure	11.5.3
Maintenance work before the harvest	10.9.5	Frost protection / corrosion protection	11.5.3
Fire extinguisher	10.10.1	Warning sign	11.5.3
Compressed air system (accessory)	10.11.1	Coolant temperature	11.5.3
Compressed air connections	10.11.2	Stopping the engine when overheated	11.5.3
Compressed-air gun and woven hose	10.11.2	Rotary chaff screen	11.5.4
Draining the accumulator	10.11.3	Cleaning the radiator	11.5.6
Pressure controller	10.11.3	Dry-type air cleaner	11.6.1
Checking the safety valve	10.11.4	Warning device	11.6.2
Straw chopper (LEXION 570 Montana)	10.12.1	Cleaning the air cleaner intake screen	11.6.2
Replacing the free-swinging knives for grain	10.12.1	Cleaning the air filter with plastic housing	11.6.3
Removing the straw guide plate (Radial spreader)	10.12.1	Removing the air filter main cartridge	11.6.3
Installing the straw guide plate (Radial spreader)	10.12.2	Cleaning the air filter main cartridge	11.6.4
Removing the straw guide plate (Standard spreader)	10.12.4	Installing the air filter main cartridge	11.6.4
Installing the straw guide plate (Standard spreader)	10.12.5	Cleaning the air filter with metal housing	11.6.5
Removing the free-swinging knives for grain	10.12.7	Removing the air filter main cartridge	11.6.5
Bolting down the free-swinging knives for grain	10.12.7	Cleaning the air filter main cartridge	11.6.6
Replacing the stationary knives	10.12.9	Installing the air filter main cartridge	11.6.7
Winter storage instructions for combines	10.13.1	Safety filter cartridge	11.6.7
11. Maintenance – engine		Removing and installing safety cartridge (plastic housing)	11.6.8
Important maintenance instructions	11.1.1	Removing and installing safety cartridge (metal housing)	11.6.9
Important maintenance instructions and safety rules	11.1.1	Alternator	11.7.1
Maintenance schedules and lubricants charts	11.2.1	Cleaning the alternator	11.7.1
Maintenance schedule	11.2.1	Electric system	11.8.1
Lubricants chart	11.2.2	Battery	11.8.1
Engine maintenance	11.3.1	Alternator	11.8.2
Engine overview	11.3.1	Engine problems, cause and / or remedy	11.9.1
Fuel system / engine oil	11.4.1	Engine winter storage	11.10.1
Fuel system	11.4.1	Engine preservation	11.10.1
Fuel tank	11.4.1	12. Lubrication chart	
Fuel shut-off tap	11.4.1	Lubricants and lubrication instructions	12.1.1
Water separator / fuel pre-filter (Standard equipment – small version)	11.4.2	13. Index	
Water separator / fuel pre-filter (optional extra, replaces fuel pre-filter Fig. 4)	11.4.3	Index	13.1.1
Replacing the filter cartridge	11.4.4		
Bleed fuel system	11.4.4		
Engine oil level check	11.4.5		
Engine oil change	11.4.5		
Draining used oil	11.4.6		
Oil filter	11.4.7		
Topping up engine oil	11.4.7		

3

General information

ROAD TRAFFIC REGULATIONS

In addition to his driving licence, the operator must always carry the copy of the vehicle type approval registration issued by the Kraftfahrt-Bundesamt (the Federal Motor Vehicle Executive). A warning triangle and, on machines over 4 t permissible total weight, at least one wheel chock must always be carried on the combine.

When driving on public roads with the combine harvester comply with all the requirements stated under letter C in the copy of the vehicle type approval registration (§ 18 Section 5 StVZO) issued by the Kraftfahrt-Bundesamt (the Federal Motor Vehicle Executive).

On machines with excess width (width over the tyres), a vehicle type approval registration for individual vehicles (single expert opinion) and a special approval in accordance with § 70, Section 1, clauses 1 and 2 of the StVZO must be carried instead of the General Operating Permit. Furthermore, all the requirements stated in the vehicle type approval registration for individual vehicles and in the special approval must be observed. The issue of a special approval differs from country to country. The excess width must be marked in accordance with the regulations for the marking of road vehicles with excess width. (two marker boards at the front and back, protective bar, two amber flashing warning beacons)

If any part(s) of the combine harvester is/are subsequently modified whose condition is/are prescribed or the operation of which (after being modified) could represent a hazard to other road users, then the vehicle type approval registration shall no longer be valid and application must be made for a new vehicle type approval registration. In this case the machine must be presented to the motor vehicle safety inspection authority responsible (TÜV) in order to obtain an expert opinion certificate (§ 19 section 2 StVZO).

If you are in any doubt as to whether this situation applies in your case, please contact us as manufacturers.

If a transport vehicle for front end attachments is towed behind the combine harvester then the cable for the lighting system must be connected and the good condition of the lighting system assured.

If the combine is equipped with a maize picker head or folding cutterbar, the regulations and requirements of the machine's General Operating Permit must be observed, in particular the requirements concerning ballast weights and tyres.

Registration

As a self propelled working machine with a maximum speed of up to 20 km/h, the combine is not subject to registration and does not need to have licence plates fitted. The machine must be clearly and indelibly marked on the left-hand side with the Christian name and surname of the owner and his address.

The towing of trailers in the trailer hitch when driving on public roads is **not** permitted.

Road traffic regulations may vary between countries. In case of discrepancies between the instructions provided by the manufacturer and the traffic regulations of the relevant countries, the traffic regulations of the countries concerned apply.

IMPORTANT NOTICE

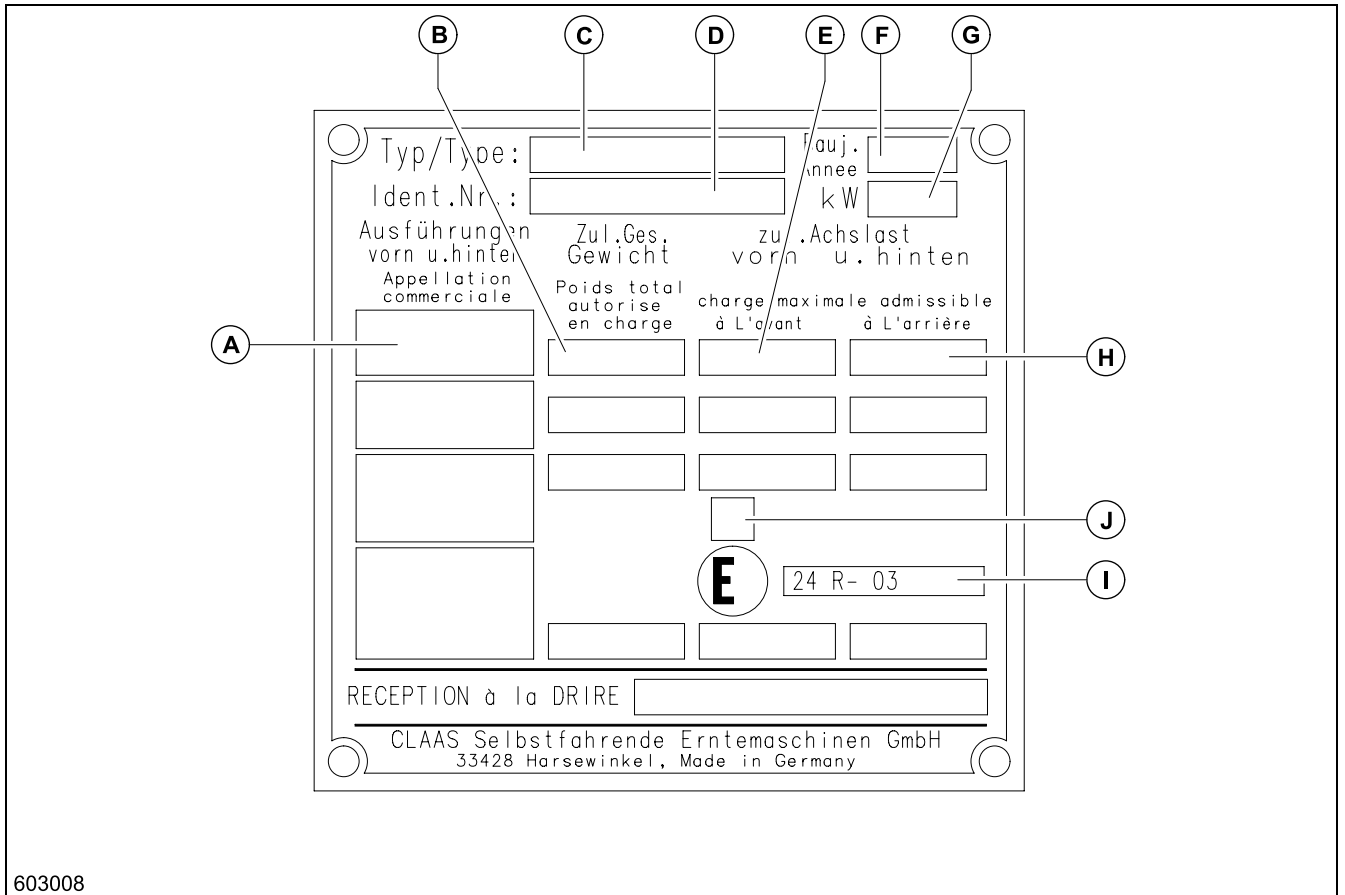
The instructions contained in this manual should be carefully read and observed by all persons involved with the operation, maintenance and inspection of this machine in order to prevent accidents. In particular, read the section "Safety rules".

The use of spare parts, accessories and ancillary equipment other than genuine CLAAS products or those which have been tested and approved by CLAAS, may change the specified design characteristics of this CLAAS machine or detract from its functional performance, with a possible adverse effect on the active and/or passive operational safety of the machine and its occupational safety standards (accident prevention).

CLAAS is in no way liable for any damage or personal injury caused through the use of other than original or approved CLAAS parts, accessories and ancillary equipment.

Technical data, dimensions and weights are given as an indication only. CLAAS reserve the right to make changes subsequently as technical developments continue. Responsibility for errors or omissions not accepted.

Front, rear, right and left refer to the direction of forward travel.



603008

IDENTIFICATION PLATE / SERIAL NUMBER

- A = Optional equipment
- B = Authorized gross weight
- C = Type
- D = Identification no. (serial number of machine)
- E = Authorized front axle load
- F = Year of manufacture
- G = Rated capacity of combine harvester (kW)
- H = Authorized rear axle load
- I = Approval no. according to ECE-R 24
- J = Absorption coefficient according to ECE-R 24

(Fig. 1)

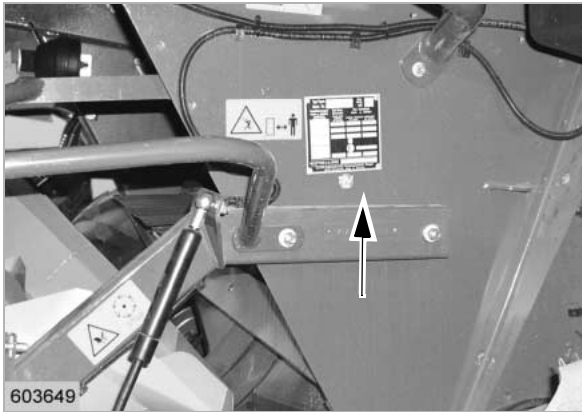
Indicate the machine number of the CLAAS combine and when the engine, front attachments, cutterbar and maize picker are concerned, also the respective serial numbers when ordering spare parts and in case of technical questions.

This is necessary as otherwise, incorrect spare part deliveries may result.

Identification plate

The identification plate of the machine is located on the right hand side above the rear axle.

(Fig. 2)



2

Machine serial number

The machine serial number is stamped on the engine frame underneath the operator's platform on the right hand side of the machine.

(Fig. 3)



3

Engine serial number

CATERPILLAR C-12

The identification plates showing the engine serial no. are attached above the turboblower.

(Fig. 4)



4



5

Straw chopper identification plate

The chopper serial number is provided on the left hand side panel.

(Fig. 5)



6

Cab serial number

The cab serial number is located at the top of the left hand side, at the rear of the frame.

(Fig. 6)

Thank you so much for reading.
Please click the “Buy Now!”
button below to download the
complete manual.



After you pay.

You can download the most
perfect and complete manual in
the world immediately.

Our support email:

ebooklibonline@outlook.com