

AXION 810-820-830-840-850





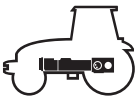
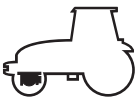
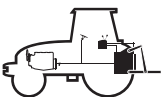

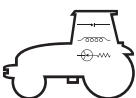




Use and Maintenance

DESCRIPTION



	MODEL	TYPE
40 km/h	Axion 810 without booster	A0904EA
	Axion 810 with booster	A0954EA
	Axion 820 without booster	A0914EA
	Axion 820 with booster	A0964EA
	Axion 830	A0924EA
	Axion 840	A0934EA
	Axion 850	A0944EA
50 km/h	Axion 810 without booster	A0904EC
	Axion 810 with booster	A0954EC
	Axion 820 without booster	A0914EC
	Axion 820 with booster	A0964EC
	Axion 830	A0924EC
	Axion 840	A0934EC
	Axion 850	A0944EC

DESCRIPTION: CHAPTER SYMBOLS

REF	CHAPTERS	SYMBOLS
A	IDENTIFICATION - APPROVAL	<div style="border: 1px solid black; padding: 5px; width: fit-content;"> HOMOLOGATION ACCORDÉE AU TYPE/VERSION [R] ANNÉE [] PAR LE MINISTÈRE DE L'AGRICULTURE SOUS LE NUMÉRO [] </div>
	SAFETY	
B	CAB	
C	ELECTRICAL SERVICES	
D	ENGINE	
E	TRANSMISSION	
F	FRONT AXLE	
G	HYDRAULICS - REAR LINKAGE AND HITCH	
H	FRONT POWER TAKEOFF, LINKAGE AND FRONT COUPLING	
I	ON-BOARD COMPUTER	
J	WHEELS AND TYRES	
K	DIMENSIONS, WEIGHTS, CAPACITIES AND BALLAST	
L	MAINTENANCE	
M	OPERATIONS THAT ARE MANDATORY UNDER THE GUARANTEE	

CONTENTS

A – IDENTIFICATION - CERTIFICATION - SAFETY

IDENTIFICATION	A.2
TRACTOR PLATE	A.2
ENGINE PLATE.....	A.3
CERTIFICATION	A.4
SAFETY	A.5
SAFETY INSTRUCTIONS.....	A.5
SAFETY STICKERS WITH WARNING PICTOGRAMS.....	A.17

B – DRIVING POSITION

OPERATING AND WORKING ENVIRONMENT	B.2
INSTRUMENTS AND CONTROLS (PANEL).....	B.4
STOWAGE AND ACCESSORIES.....	B.5
LIGHTING, INDICATORS AND SAFETY	B.6
DESCRIPTION	B.6
DRIVING LIGHTS AND HORN.....	B.9
WORKING LIGHTS AND ROTATING BEACON.....	B.10
OVERHEAD LIGHT	B.11
REAR VIEW MIRRORS.....	B.11
MAIN SWITCH (KEY OPERATED)	B.13
DESCRIPTION	B.13
MULTIFUNCTION ARMREST	B.14
ADJUSTMENT.....	B.14
SEAT	B.15
OPERATION.....	B.15
STEERING WHEEL	B.18
ADJUSTMENT.....	B.18
INSTRUMENT PANEL	B.19
DESCRIPTION	B.19
OPERATION.....	B.21
OPERATION.....	B.24
CALIBRATION.....	B.25
DISPLAY	B.26
CEBIS PANEL	B.26
NATURAL VENTILATION AND WINDOWS	B.27
OPERATION.....	B.27
HEATING - VENTILATION - MANUAL AIR CONDITIONING	B.30
DESCRIPTION	B.30
OPERATION.....	B.30
HEATING/VENTILATION/AUTOMATIC CLIMATE CONTROL	B.32
DESCRIPTION	B.32
OPERATION.....	B.32
CAB SUSPENSION	B.35
ADJUSTMENT.....	B.35

C – ELECTRICAL SYSTEM

TRAILER/IMPLEMENT LIGHT SOCKET	C.2
DESCRIPTION	C.2
ELECTRIC CABINET SUPPLY SOCKET	C.3
DESCRIPTION	C.3
EVENT COUNTER SOCKET	C.4
DESCRIPTION	C.4
ISO SOCKET	C.5
DESCRIPTION	C.5
PROVISION FOR THE INSTALLATION OF A CONTROL CASING IN THE CAB	C.6
FITTING BOX MOUNTING.....	C.6
CABLE ROUTING	C.6
BATTERY.....	C.7
DESCRIPTION	C.7
BATTERY MASTER SWITCH	C.8
DESCRIPTION	C.8
FUSES AND RELAYS	C.9
RECOMMENDATIONS	C.9
CAB-MOUNTED SERVICES FUSE BOX.....	C.9
CAB TOP FUSE BOX.....	C.12
PRIMARY SERVICES FUSE BOX.....	C.14

D –ENGINE

CHARACTERISTICS	D.2
DISPLAYS.....	D.3
DESCRIPTION	D.3
SAFETY	D.4
SAFETY: MECHANICAL PROTECTION.....	D.4
ENGINE CONTROL.....	D.6
STARTING THE ENGINE.....	D.6
ACCELERATOR CONTROLS.....	D.11
STOPPING THE ENGINE	D.14
CLAAS POWER MANAGEMENT	D.15
OPERATION.....	D.15
FUEL	D.16
RECOMMENDATIONS	D.16

E – TRANSMISSION

TRANSMISSION SPECIFICATIONS.....	E.2
GEARBOX.....	E.2
ROAD SPEED	E.2
REAR AXLE.....	E.22
POWER TAKE OFFS (PTO)	E.24
DISPLAYS.....	E.25
CEBIS PANEL	E.25

SAFETY	E.27
REVERSER NEUTRAL	E.27
TRANSMISSION NEUTRAL.....	E.28
MECHANICAL PROTECTION.....	E.29
GEARBOX.....	E.31
STARTING THE TRACTOR.....	E.31
MANUAL GEAR CHANGES.....	E.35
AUTOMATIC GEAR CHANGES.....	E.38
RATIO MANAGEMENT	E.43
LOW RANGE.....	E.44
REAR AXLE	E.45
DIFFERENTIAL LOCK	E.45
TRACTOR BRAKES.....	E.47
TRAILER BRAKE	E.49
POWER TAKE OFFS (PTO)	E.51
STATIONARY WORKING.....	E.60
REQUIREMENTS.....	E.60
TOWING	E.61
REQUIREMENTS.....	E.61

F – FRONT AXLE

FRONT AXLE	F.2
CHARACTERISTICS.....	F.2
MECHANICAL PROTECTION	F.4
OPERATION.....	F.4
INSTRUMENT PANEL	F.4
CEBIS PANEL	F.4
FRONT AXLE ENGAGEMENT	F.5
OPERATION.....	F.5
AUTOMATIC MODE.....	F.6
PERMANENT MODE	F.7
DIFFERENTIAL LOCK.....	F.8
RECOMMENDATIONS	F.8
OPERATION.....	F.8
AUTOMATIC MODE.....	F.8
PERMANENT MODE	F.9
PROACTIV SUSPENSION.....	F.11
OPERATION.....	F.11
FIXED MODE	F.11
AUTOMATIC MODE.....	F.12

G – HYDRAULICS - REAR LINKAGE AND HITCH

CHARACTERISTICS.....	G.2
HYDRAULIC SYSTEMS.....	G.2
LINKAGE	G.2
HITCH.....	G.3

HYDRAULIC SYSTEMS	G.4
AUXILIARY SPOOL VALVES.....	G.4
POWER BEYOND	G.17
LINKAGE	G.18
CONTROLS.....	G.18
DISPLAY.....	G.19
SAFETY	G.19
USING THE LINKAGE.....	G.21
MODE SELECTION.....	G.21
POSITION CONTROL	G.22
FORCE CONTROL.....	G.22
UPPER LIMIT	G.24
LOWERING SPEED	G.25
TRANSPORT DAMPER	G.25
ACTIVE WHEEL SLIP MANAGEMENT	G.27
EXTERNAL CONTROLS.....	G.28
HITCH.....	G.29
RECOMMENDATIONS	G.29
ADJUSTABLE LINKS	G.29
TOP LINK.....	G.30
STABILISERS.....	G.30
AUTOMATIC HOOKS.....	G.32
DRAW BAR COUPLINGS	G.33
TOW HOOK.....	G.34
AUTOMATIC PICK-UP HITCH.....	G.34

H – FRONT POWER TAKEOFF, LINKAGE AND FRONT COUPLING

FRONT LINKAGE	H.2
CHARACTERISTICS.....	H.2
FRONT POWER TAKE-OFF	H.3
CHARACTERISTICS.....	H.3
FRONT LINKAGE	H.4
CONTROLS.....	H.4
ACTIVATION	H.5
WITHOUT POSITION MONITORING	H.6
HITCH	H.7
FRONT POWER TAKE-OFF	H.10
OPERATION.....	H.10

I –ON BOARD COMPUTER

CEBIS PANEL	I.2
DESCRIPTION	I.2
OPERATION.....	I.2
OPERATION.....	I.3
MULTIFUNCTION DISPLAY	I.3
DIRECT ACCESS.....	I.10
MALFUNCTIONS	I.11
MENU	I.16

CLAAS SEQUENCE MANAGEMENT	I.55
OPERATION.....	I.55
OPERATION.....	I.55
CLAAS SEQUENCE MANAGEMENT COMMANDS	I.56
SAFETY.....	I.56
SAVING A SEQUENCE.....	I.56
LAUNCHING A SEQUENCE.....	I.59
VIEWING A SEQUENCE.....	I.65
J – WHEELS AND TYRES	
TYRES	J.2
RECOMMENDATIONS	J.2
INFLATION PRESSURE	J.2
TWIN WHEELS	J.4
TRACK WIDTHS	J.6
CHARACTERISTICS : SETTING THE TRACK.....	J.6
FRONT TRACKS.....	J.8
REAR TRACKS	J.24
TYRE COMBINATIONS	J.40
SPECIAL CASES	J.42
TOOLS OPERATING AT GREAT DEPTH	J.42
K – DIMENSIONS, WEIGHTS, CAPACITIES AND BALLAST	
DIMENSIONS AND WEIGHTS.....	K.2
DESCRIPTION	K.2
CAPACITIES	K.4
DESCRIPTION	K.4
BALLAST	K.6
DESCRIPTION	K.6
L – MAINTENANCE	
GENERAL.....	L.2
RECOMMENDATIONS	L.2
FREQUENCY.....	L.3
SUMMARY TABLE	L.3
OPERATIONS	L.5
BLEEDING AIR FROM THE INJECTION SYSTEM	L.36
DESCRIPTION	L.36
MAINTENANCE LOGBOOK.....	L.37
RECOMMENDATIONS	L.37
M – OPERATIONS THAT ARE MANDATORY UNDER THE GUARANTEE	
OPERATIONS MANDATORY UNDER THE TERMS OF THE CONTRACTUAL GUARANTEE	M.2
PRE-DELIVERY INSPECTION - HANDING OVER TO THE CUSTOMER	M.2
MANDATORY ROUTINE MAINTENANCE	M.2
MANDATORY INSPECTIONS	M.3



A – IDENTIFICATION - CERTIFICATION - SAFETY



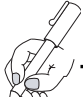


IDENTIFICATION

In any correspondence or order, always include the tractor identification number, the engine type and serial number, and the CEE structural certification N°.

TRACTOR PLATE

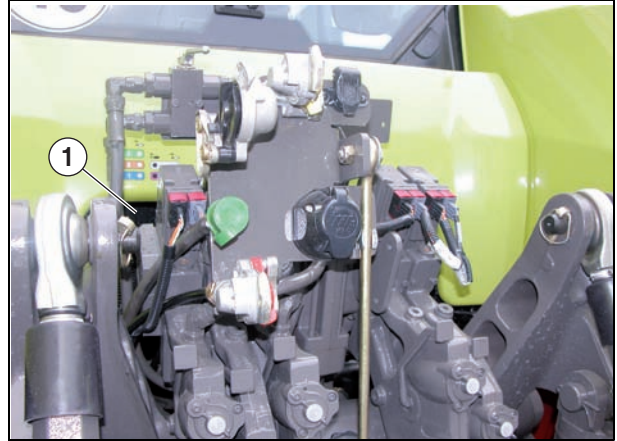
Plate (1) is riveted behind the cab



TYPE :



SERIAL NO:



841hsn58

- A – Tractor type.
- B – The tractor identification N° (this n° is also stamped on the front right of the chassis).
- C – The CEE certification N° (German certification n° for 50 km/h version tractors).
- D – Maximum loaded weight depending on tyre fit (in kg).
- E – Maximum front axle loaded weight depending on tyre fit (in kg).
- F – Maximum rear axle loaded weight depending on tyre fit (in kg).
- G – Maximum unbraked trailer weight (in kg).
- H – Maximum trailer weight - mechanical brake (in kg).
- I – Maximum trailer weight - inertia brake (in kg).
- J – Maximum trailer weight - servo brake (in kg).

CLAAS KGaA mbH	
Type	A
N° CEE	C
N° identification	B
Masse totale admissible (kg) (suivant pneumatiques)	D
Essieu AV	E
Essieu AR	F
Masse remorquable admissible (kg)	G
sans frein	H
frein mécanique	I
frein à inertie	J
freins assistés	J
Fabriqué par RENAULT Agriculture	

841hsn50



ENGINE PLATE

Remove the cover (2) located on the right side of the engine to expose the identification plate (3).

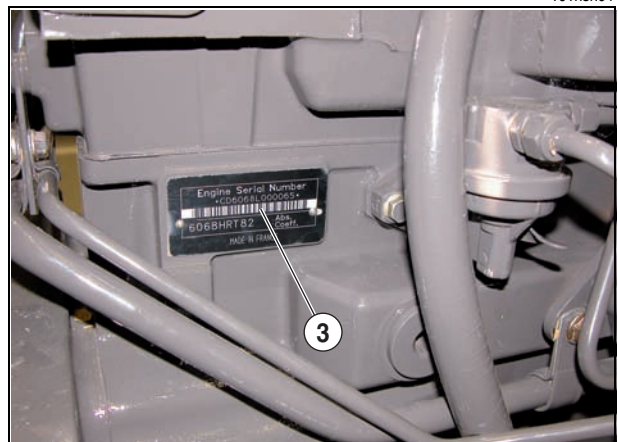
This plate contains the engine type and serial number.

The label (4), on the right-hand side of the engine, specifies:

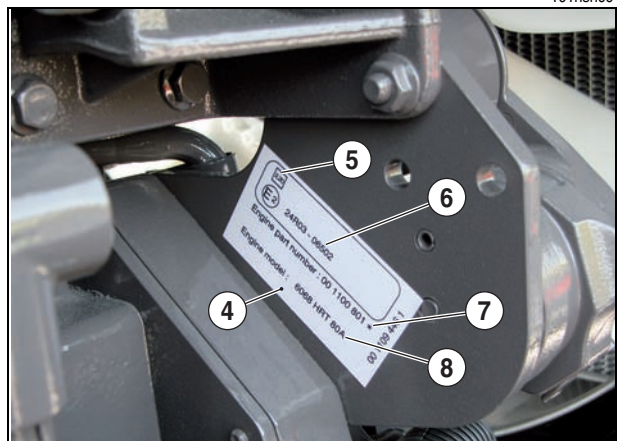
- 5- The rate of absorption
- 6- The certification Nr
- 7- Engine serial n°
- 8- The type of engine.



101hsn04



101hsn00



101hsn14



CERTIFICATION

Plates (1) and (2) are riveted behind the cab.

Description

A- Tractor type.

B- The tractor identification N° (this n° is also stamped on the front right of the chassis).

C- The CEE certification N° (German certification n° for 50 km/h version tractors).

D- Maximum loaded weight depending on tyre fit.

E- Maximum front axle loaded weight depending on tyre fit.

F- Maximum rear axle loaded weight depending on tyre fit.

G- Maximum unbraked trailer weight (in kg).

H- Maximum trailer weight - mechanical brake (in kg).

I- Maximum trailer weight - inertia brake (in kg).

J- Maximum trailer weight - servo brake (in kg).

K- EMC (electromagnetic compatibility) acceptance.

L- EMC (electromagnetic compatibility) acceptance N°.

M- Smoke absorption coefficient.

N- CEE structure acceptance.

O- CEE structure acceptance N°.



841hsn59

1		2	
CLAAS KGaA mbH			
Type	A	e2	
N° CEE	C	023003 L	
N° identification	B	1,28 M	
Masse totale admissible (kg) (suivant pneumatiques)	D	S e2 N	
Essieu AV	E	072 O	
Essieu AR	F		
Masse remorquable admissible (kg)			
sans frein	G		
frein mécanique	H		
frein à inertie	I		
freins assistés	J		
Fabriqué par RENAULT Agriculture			

841hsn49

Certification number

- Certification of Axion tractors (40 km/h version) in accordance with European directives 2003/37/CE .
- Certification of Axion tractors (50 km/h version) in accordance with German construction and use regulations (Styzo) .
- Certification of Axion structures in accordance with European directives 79/622/CEE (amended 1999/40/CE) .
- CEE certification N° for Axion tractor (40 km/h version): e2*2003/37*0001.
- German certification N° for Axion tractor (50 km/h version) : L973
- Certification N° of safety structures of Axion tractors: e2 S 128.



SAFETY**SAFETY INSTRUCTIONS****FOREWORD**



CLAAS Tractors are designed and built to give you optimum service over many years. They are designed to provide the most comfortable and safe working conditions. However, accidents can easily happen in agricultural work. It is important to know the dangers and how to avoid them. We respectively draw your attention to certain aspects that merit constant attention (non exhaustive list).

The guarantee is canceled if the standards, instructions, maintenance planned by the user manual are not applied. The guarantee does not cover damages resulting from using components and spare parts not provided by Claas or not approved by Claas.

Changing the ECU parameters fully releases Claas from responsibility.



PRECAUTIONS BEFORE STARTING



Caution is the best guarantee against any risk of accident. The driver must be fully familiar with the tractor and must understand all the controls, their position and their purpose. This manual must be read carefully.

If the tractor is used by anybody other than the owner, he must be given all explanations required to allow him to work safely. The driving position must be clean (instrument panel, steering wheel, floor and pedals).

Footsteps must be clean (no mud) to avoid slipping when climbing or descending.

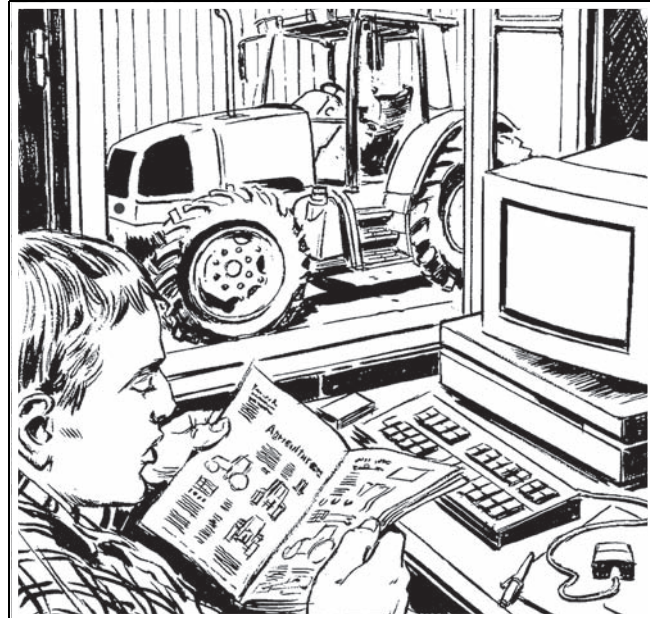
Use the steps and handles provided when getting into or out of the tractor. Before starting the engine, make sure that all controls are in the neutral position, particularly the power take-off lever.

Only run the engine in well ventilated areas.

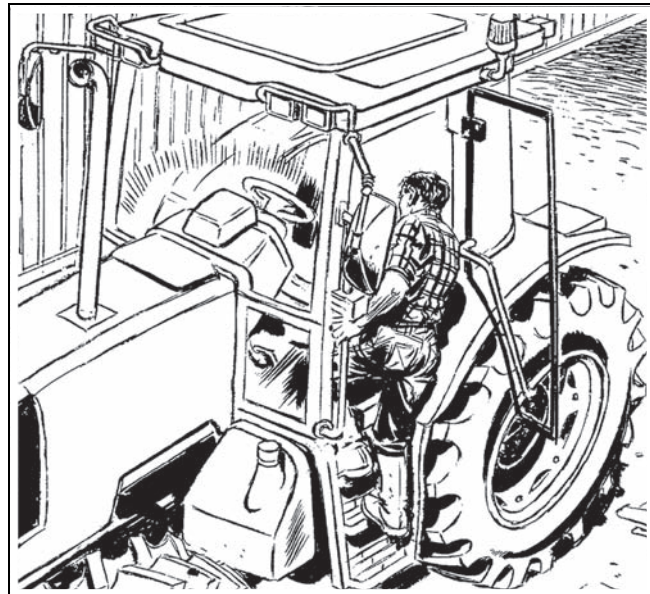
Make sure there is nobody nearby before starting the tractor.

Fully release the handbrake before starting.

Do not start work if the tractor is not working properly.



001hsn25



001hsn26

Thank you so much for reading.
Please click the “Buy Now!”
button below to download the
complete manual.



After you pay.

You can download the most
perfect and complete manual in
the world immediately.

Our support email:

ebooklibonline@outlook.com