

CLAAS



AXION 850-840-830-820-810 CEBIS

Operator's manual

SERVICE & PARTS

VALIDITY OF THE OPERATOR'S MANUAL

6544

This operator's manual is valid for the following tractors:

Type of tractor	Tractor serial number	
	From	To
AXION 800	A3000050	

The operator's manual describes the possible equipment for your tractor. Your tractor's equipment is listed in your order confirmation.

UNITS

The units used in this document are in line with international system of units:

<i>Physical</i>	<i>Unit Name</i>	<i>Symbol of unity</i>	<i>Multiples and sub-multiples of the unit</i>
Size	Metre	m	mm - cm
Volume	Cubic meter	m ³	cm ³ - dm ³
	Liter	l	ml - cl
Angle	Degree	°	
Time	Second	s	
	Minute	min	
	Hour	h	
Linear speed	Kilometer per hour	km/h	m/h
Rotation speed	Revolution per minute	1/min	
Weight	Kilogram	kg	g
Forced	Newton	N	
Torque	Newton meter	Nm	
Pressure	Pascal	Pa	
Power	Watt	W	kW
Flow rate	Liter per minute	l/min	
Temperature	Degree Celsius	°C	
Power voltage	Volt	V	mV
Electric intensity	Ampere	A	mA
Resistor	Ohm	Ω	kΩ
Sound level	Bel	B(A)	dB(A)









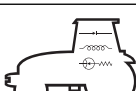



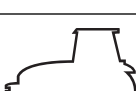
The date format used in this document also complies with the international system:

Year-Month-Day

Example: 2010-07-15

CHAPTER SYMBOLS

5618

REF	CHAPTERS	SYMBOLS
A	IDENTIFICATION - CERTIFICATION - SAFETY	
B	CAB	
C	ELECTRICAL SERVICES	
D	ENGINE	
E	TRANSMISSION	
F	FRONT AXLE	
G	REAR EQUIPMENT	
H	FRONT EQUIPMENT	
I	CEBIS TERMINAL	
J	WHEELS AND TYRES	
K	CHARACTERISTICS	
L	MAINTENANCE	
M	OPERATIONS THAT ARE MANDATORY UNDER THE GUARANTEE	

CONTENTS

A - IDENTIFICATION - CERTIFICATION - SAFETY

1	TRACTOR INFORMATION PLATE	A. 2
2	TRACTOR POWER LABEL	A. 4
3	MOTOR INFORMATION PLATE	A. 5
4	CAB IDENTIFICATION PLATE	A. 6
5	EUROPEAN REGULATION	A. 7
6	SAFETY	A. 8
6.1	SAFETY INSTRUCTIONS	A. 8
6.2	SAFETY STICKERS WITH WARNING PICTOGRAMS	A. 23

B - CAB

1	OPERATING AND WORKING ENVIRONMENT	B. 2
1.1	INSTRUMENTS AND CONTROLS (DRIVING POSITION)	B. 2
1.2	INSTRUMENTS AND CONTROLS (PANEL)	B. 4
1.3	STOWAGE AND ACCESSORIES	B. 5
2	LIGHTING, INDICATORS AND SAFETY	B. 6
2.1	DESCRIPTION	B. 6
2.2	LOW/HIGH BEAMS AND HORN	B. 7
2.3	WORKING LIGHTS AND ROTATING BEACON	B. 8
2.4	OVERHEAD LIGHT	B. 9
2.5	REAR VIEW MIRRORS	B. 9
3	STARTING CONTACT	B. 11
4	MULTIFUNCTION ARMREST	B. 12
5	CAB SUSPENSION	B. 13
5.1	Z-ACTIV CAB	B. 13
5.2	Z CAB	B. 14
6	SEATS	B. 16
6.1	DRIVER'S SEAT	B. 16
6.2	PASSENGER SEAT	B. 18
7	STEERING WHEEL	B. 20
8	INSTRUMENT PANEL	B. 21
8.1	DESCRIPTION	B. 21
8.2	OPERATION	B. 23
8.3	OPERATION	B. 25
8.4	CALIBRATION	B. 26
9	DISPLAY	B. 27
9.1	CEBIS TERMINAL	B. 27

10	HINGED PANELS AND WINDOWS	B. 28
11	SIGHT	B. 32
12	HEATING - VENTILATION - MANUAL AIR CONDITIONING	B. 33
12.1	DESCRIPTION	B. 33
12.2	OPERATION	B. 33
13	HEATING/VENTILATION/AUTOMATIC CLIMATE CONTROL	B. 38
13.1	DESCRIPTION	B. 38
13.2	OPERATION	B. 38

C - ELECTRICAL SYSTEM

1	CHARACTERISTICS	C. 2
2	TRAILER/IMPLEMENT LIGHT SOCKET	C. 3
3	ELECTRIC CABINET SUPPLY SOCKET	C. 5
4	EVENT COUNTER SOCKET	C. 6
5	ISO SOCKET	C. 7
6	ISOBUS SOCKET	C. 8
7	PROVISION FOR THE INSTALLATION OF A CONTROL CASING IN THE CAB	C. 9
7.1	FITTING BOX MOUNTING	C. 9
7.2	CABLE ROUTING	C. 9
8	BATTERY	C. 10
8.1	BATTERY COMPARTMENT	C. 10
8.2	BATTERY MASTER SWITCH	C. 11
9	FUSES AND RELAYS	C. 12
9.1	RECOMMENDATIONS	C. 12
9.2	CAB-MOUNTED SERVICES FUSE BOX	C. 12
9.3	CAB TOP FUSE BOX	C. 15
9.4	PRIMARY SERVICES FUSE BOX	C. 18

D - ENGINE

1	CHARACTERISTICS	D. 2
2	DISPLAYS	D. 4
2.1	INSTRUMENT PANEL	D. 4
2.2	CEBIS TERMINAL	D. 4
3	SAFETY	D. 5
3.1	OPERATION	D. 5
3.2	CEBIS TERMINAL	D. 5
3.3	INSTRUMENT PANEL	D. 5
3.4	RECOMMENDATIONS	D. 5
4	ENGINE HOOD	D. 7
4.1	ONE-PIECE HOOD	D. 7
4.2	SIDE PANELS	D. 7

5	ENGINE CONTROL	D. 9
5.1	STARTING THE ENGINE	D. 9
5.2	USING THE ACCELERATOR PEDAL AND LEVER	D. 12
5.3	STOPPING THE ENGINE	D. 15
6	CLAAS POWER MANAGEMENT	D. 16
7	FUEL	D. 17
7.1	RECOMMENDATIONS	D. 17
7.2	BLEEDING AIR FROM THE INJECTION SYSTEM	D. 18

E - TRANSMISSION

GEARBOX

1	CHARACTERISTICS	E. 4
2	FORWARD SPEEDS	E. 5
3	DISPLAY	E. 25
3.1	CEBIS TERMINAL	E. 25
3.2	INSTRUMENT PANEL	E. 26
4	SAFETY	E. 27
4.1	REVERSER NEUTRAL	E. 27
4.2	TRANSMISSION NEUTRAL	E. 28
4.3	PROTECTION OF MECHANICAL PARTS	E. 30
5	STARTING THE TRACTOR	E. 31
5.1	CLUTCH	E. 31
5.2	SELECTION OF MOVEMENT DIRECTION	E. 32
5.3	REVERSER PROGRESSIVITY ADJUSTMENT	E. 33
5.4	COUPLING/DECOUPLING FORWARD/REVERSE GEARS	E. 34
6	MANUAL GEAR CHANGES	E. 36
6.1	START RATIO	E. 36
6.2	WORK MODE	E. 36
6.3	ROAD MODE	E. 37
7	AUTOMATIC GEAR CHANGES	E. 39
7.1	SKIP SHIFT	E. 39
7.2	AUTOMATIC SPEED ADAPTATION (SPEED MATCHING)	E. 39
7.3	MANOEUVRING GEAR	E. 40
7.4	HEXACTIV	E. 41
8	RATIO MANAGEMENT	E. 47
8.1	OPERATION	E. 47
9	CREEP GEAR RANGE	E. 48
9.1	OPERATION	E. 48
9.2	OPERATION	E. 48

REAR AXLE

1	CHARACTERISTICS	E. 50
2	DISPLAY	E. 52
3	PROTECTION OF MECHANICAL PARTS	E. 53
3.1	OPERATION	E. 53
3.2	INSTRUMENT PANEL	E. 53
3.3	CEBIS TERMINAL	E. 53
4	DIFFERENTIAL LOCK	E. 54
4.1	RECOMMENDATIONS	E. 54
4.2	OPERATION	E. 54
4.3	AUTOMATIC MODE	E. 54
4.4	PERMANENT MODE	E. 56
5	BRAKES	E. 57
5.1	SERVICE BRAKES	E. 57
5.2	HANDBRAKE (AUXILIARY AND PARKING BRAKE)	E. 57
6	TRAILER BRAKE	E. 60
6.1	HYDRAULIC BRAKE	E. 60
6.2	PNEUMATIC BRAKE	E. 61

F - FRONT AXLE

1	CHARACTERISTICS	F. 2
2	PROTECTION OF MECHANICAL PARTS	F. 5
2.1	OPERATION	F. 5
2.2	INSTRUMENT PANEL	F. 5
2.3	CEBIS TERMINAL	F. 5
3	FRONT AXLE ENGAGEMENT	F. 6
3.1	OPERATION	F. 6
3.2	AUTOMATIC MODE	F. 6
3.3	PERMANENT MODE	F. 7
4	DIFFERENTIAL LOCK	F. 9
4.1	RECOMMENDATIONS	F. 9
4.2	OPERATION	F. 9
4.3	AUTOMATIC MODE	F. 9
4.4	PERMANENT MODE	F. 11
5	SUSPENDED FRONT AXLE	F. 12
5.1	OPERATION	F. 12
5.2	FIXED MODE	F. 12
5.3	AUTOMATIC MODE	F. 13

G - REAR EQUIPMENT

HYDRAULIC SYSTEMS

1	CHARACTERISTICS	G. 4
2	AUXILIARY SPOOL VALVES	G. 5
2.1	ASSOCIATION BETWEEN CONTROLS/REAR PRESSURE CONNECTORS	G. 5
2.2	PRESSURE CONNECTORS	G. 7
2.3	CONTROLS	G. 10
2.4	SAFETY	G. 11
2.5	START UP	G. 11
2.6	LINEAR CONTROLS	G. 13
2.7	JOYSTICK	G. 13
2.8	EXTERNAL CONTROLS	G. 15
2.9	MANAGEMENT OF ELECTROHYDRAULIC SPOOL VALVES	G. 15
3	POWER BEYOND	G. 19
3.1	DESCRIPTION	G. 19
3.2	OPERATION	G. 19
3.3	OPERATION	G. 19
4	STATIONARY WORKING	G. 20

REAR LIFT

1	CHARACTERISTICS	G. 22
2	CONTROLS	G. 23
3	DISPLAY	G. 25
4	SAFETY	G. 26
4.1	PROTECTION OF MECHANICAL PARTS	G. 26
4.2	WARNING LIGHT	G. 26
4.3	CEBIS TERMINAL	G. 26
4.4	ROAD TRANSPORT SAFETY	G. 26
5	USING THE LINKAGE	G. 28
6	MODE SELECTION	G. 29
7	POSITION CONTROL	G. 30
8	FORCE CONTROL	G. 31
9	UPPER LIMIT	G. 33
10	LOWERING SPEED	G. 34
11	TRANSPORT DAMPER	G. 35
12	ACTIVE WHEEL SLIP MANAGEMENT	G. 36
12.1	OPERATION	G. 36
12.2	ADJUSTMENT	G. 36
12.3	OPERATION	G. 37

13	EXTERNAL CONTROLS	G. 38
13.1	OPERATION	G. 38
13.2	OPERATION	G. 38

REAR POWER TAKE-OFF

1	CHARACTERISTICS	G. 42
2	RECOMMENDATIONS	G. 43
3	CONTROLS	G. 44
4	DISPLAY	G. 45
5	PTO SPEED SELECTION	G. 46
6	OPERATION	G. 47
7	EXTERNAL CONTROLS	G. 48
8	OPERATION	G. 49
9	PTO AUTOMATION	G. 50
9.1	OPERATION	G. 50
9.2	MANUAL ADJUSTMENT	G. 50
9.3	CEBIS PANEL ADJUSTMENT	G. 51
10	POWER TAKE-OFF END FITTING	G. 52
11	CONNECTING IMPLEMENTS TO THE POWER TAKE-OFF	G. 53
12	STATIONARY WORKING	G. 54

REAR HITCH

1	CHARACTERISTICS	G. 56
2	RECOMMENDATIONS	G. 58
3	ADJUSTABLE LINKS	G. 60
4	UPPER LINK	G. 61
4.1	MECHANICAL UPPER ROD	G. 61
4.2	UPPER TOP LINKAGE	G. 61
5	AUTOMATIC HOOKS	G. 62
6	STABILISERS	G. 64
6.1	OPERATION	G. 64
6.2	MECHANICAL STABILISERS	G. 64
6.3	SELF-LOCKING STABILISERS	G. 64

7	DRAW BAR COUPLINGS	G. 65
8	TOW HOOK	G. 67
9	SWINGING DRAWBAR	G. 68
10	AUTOMATIC PICK-UP HITCH	G. 70

H - FRONT EQUIPMENT

HYDRAULIC SYSTEMS

1	CHARACTERISTICS	H. 4
2	PRESSURE CONNECTORS	H. 5
2.1	RECOMMENDATIONS	H. 5
2.2	OPERATION	H. 5
2.3	FREE RETURN TO THE TANK	H. 6
3	SAFETY	H. 7
3.1	PROTECTION OF MECHANICAL PARTS	H. 7
3.2	CEBIS TERMINAL	H. 7
4	FRONT PRESSURE TAPS CONTROLLED BY SPOOL VALVE 3	H. 8
4.1	DESCRIPTION	H. 8
4.2	CONTROLS	H. 8
4.3	PRELIMINARY OPERATIONS	H. 9
4.4	OPERATION	H. 9
5	FRONT PRESSURE TAPS CONTROLLED BY SPOOL VALVE 7	H. 11
5.1	DESCRIPTION	H. 11
5.2	CONTROLS	H. 11
5.3	PRELIMINARY OPERATIONS	H. 12
5.4	OPERATION	H. 13
6	FRONT PRESSURE TAPS CONTROLLED BY SPOOL VALVES 7 AND 8	H. 15
6.1	DESCRIPTION	H. 15
6.2	CONTROLS	H. 15
6.3	PRELIMINARY OPERATIONS	H. 16
6.4	OPERATION	H. 16
7	MANAGEMENT OF ELECTROHYDRAULIC SPOOL VALVES	H. 19

FRONT LINKAGE

1	CHARACTERISTICS	H. 22
2	FRONT LINKAGE CONTROLLED BY SPOOL VALVE 1	H. 23
2.1	CONTROLS	H. 23
2.2	SAFETY	H. 24
2.3	PRELIMINARY OPERATIONS	H. 25
2.4	OPERATION	H. 26
2.5	EXTERNAL CONTROLS	H. 28

3	FRONT LINKAGE CONTROLLED BY SPOOL VALVE 6	H. 29
3.1	CONTROLS	H. 29
3.2	SAFETY	H. 30
3.3	PRELIMINARY OPERATIONS	H. 31
3.4	OPERATION	H. 32
3.5	EXTERNAL CONTROLS	H. 34
4	TRANSPORT DAMPER	H. 35
5	POSITION CONTROL	H. 36
5.1	DISPLAY	H. 36
5.2	DESCRIPTION OF ADJUSTMENTS	H. 37
5.3	ACTIVATION OF POSITION CONTROL	H. 37
5.4	UPPER LIMIT ADJUSTMENT	H. 38
5.5	ADJUSTMENT OF THE BOTTOM STOP	H. 38
5.6	RAISING SPEED ADJUSTMENT	H. 39
5.7	RATE OF DESCENT ADJUSTMENT	H. 39
5.8	USING THE POSITION CONTROL	H. 40
6	3-POINT HITCH	H. 42
6.1	LOWER LINKS	H. 42
6.2	UPPER LINK	H. 43
6.3	HITCHING AND UNHITCHING THE TOOL	H. 43

FRONT POWER TAKE-OFF

1	CHARACTERISTICS	H. 48
2	DISPLAY	H. 49
3	RECOMMENDATIONS	H. 50
4	FRONT POWER TAKE-OFF ENGAGEMENT	H. 52
5	STOP OF THE FRONT POWER TAKE-OFF	H. 53

FRONT LOADER

1	FITTING A FRONTAL LOADER ADAPTATION FRAME	H. 56
2	OPERATION	H. 58

I - CEBIS TERMINAL

USING THE CEBIS TERMINAL

1	DESCRIPTION	I. 4
2	OPERATION	I. 5
3	OPERATION	I. 6
4	MULTIFUNCTION DISPLAY	I. 7
4.1	OPERATION	I. 7
4.2	WORK SCREEN	I. 8
4.3	ROAD SCREEN	I. 11
5	DIRECT ACCESS	I. 14
5.1	OPERATION	I. 14
5.2	OPERATION	I. 15
6	MALFUNCTIONS	I. 16
6.1	OPERATION	I. 16
6.2	WARNINGS	I. 16
6.3	WARNING	I. 17
6.4	INFORMATION	I. 19
6.5	ICON	I. 20
7	MENU	I. 21
7.1	MAIN MENU	I. 21
7.2	TRANSMISSION	I. 22
7.3	LIFT	I. 23
7.4	HYDRAULICS	I. 24
7.5	ON BOARD COMPUTER	I. 25
7.6	CLAAS SEQUENCE MANAGEMENT	I. 28
7.7	PREVIEWING A CLAAS SEQUENCE MANAGEMENT SEQUENCE IN REAL TIME	I. 29

ON BOARD COMPUTER

1	OPERATION	I. 32
2	GENERAL PERFORMANCE	I. 33
2.1	OPERATION	I. 33
2.2	SELECTING INFORMATION FOR DISPLAY IN THE PROGRAMMABLE WINDOW	I. 34
2.3	COUNTER RESETTING	I. 34
3	PLOT MANAGEMENT	I. 35
3.1	OPERATION	I. 35
3.2	COMPUTER START/SHUT DOWN	I. 36
3.3	PLOT MANAGEMENT EDITOR	I. 37
4	IMPLEMENT SETTINGS	I. 39
4.1	WORKING WIDTH	I. 39
4.2	COUNTING MODE	I. 39
4.3	SELECTING THE THEORETICAL OR ACTUAL SPEED	I. 40
4.4	TOOL MANAGEMENT	I. 40
5	MAINTENANCE	I. 46
5.1	MAINTENANCE COUNTER	I. 46
5.2	LIST OF ACTIVE DEFECTS	I. 47
5.3	GEARBOX OIL TEMPERATURE	I. 48
6	F1, F2, F3 AND F4 FUNCTION CONTACTS	I. 49
6.1	OPERATION	I. 49
6.2	ADJUSTMENT	I. 49
7	CEBIS	I. 53
7.1	BRIGHTNESS	I. 53
7.2	LANGUAGES AND UNITS	I. 55
7.3	DATE AND TIME	I. 56

CLAAS SEQUENCE MANAGEMENT

1	OPERATION	I. 58
2	OPERATION	I. 59
3	CONTROLS	I. 60
3.1	DESCRIPTION	I. 60
4	SAFETY	I. 61
4.1	PROTECTION OF MECHANICAL PARTS	I. 61
5	LAUNCHING A SEQUENCE	I. 62
5.1	OPERATION	I. 62
5.2	OPERATION	I. 64

6	SAVING A SEQUENCE	I. 68
7	INTERRUPTING A SEQUENCE	I. 71
7.1	TO RESUME THE CURRENT SEQUENCE, PRESS THE SAME CONTACT	I. 71
7.2	CANCELLING A PAUSED SEQUENCE	I. 71
7.3	CANCELLING AN ONGOING SEQUENCE	I. 72
7.4	CANCELLING ONGOING ACTIONS	I. 72
7.5	EMERGENCY STOP	I. 73
8	VIEWING A SEQUENCE	I. 74
8.1	VIEWING IN THE INFO MODE	I. 74
8.2	VIEWING IN REAL-TIME MODE	I. 75
9	SEQUENCE MODIFICATION	I. 76
9.1	OPERATION	I. 76
9.2	MODIFYING A STAGE IN A SEQUENCE	I. 77
9.3	ADDING A STAGE IN A SEQUENCE	I. 79
9.4	DELETING A STAGE IN A SEQUENCE	I. 80
9.5	SELECTING THE REGISTRATION MODE OF A SEQUENCE	I. 80

J - WHEELS AND TYRES

1	TYRES	J. 2
1.1	RECOMMENDATIONS	J. 2
1.2	INFLATION PRESSURE	J. 3
1.3	LOAD INDEX	J. 4
1.4	SPEED CODE	J. 5
2	TRACK WIDTHS	J. 6
2.1	SETTING THE TRACK	J. 6
2.2	FRONT TRACKS	J. 8
2.3	REAR TRACKS	J. 24
2.4	TYRE COMBINATIONS	J. 42
3	WHEELS	J. 46
3.1	GENERAL	J. 46
3.2	DUAL WHEELS	J. 46

K - CHARACTERISTICS

1	DIMENSIONS	K. 2
2	WEIGHT	K. 3
3	LOAD-BEARING CAPABILITIES	K. 4
4	MAXIMUM TOW WEIGHT AUTHORIZED	K. 5
5	CAPACITIES	K. 6
6	BALLAST	K. 8
6.1	BALLASTING AVAILABLE	K. 8
6.2	TRACTOR BALANCING	K. 13

7	CAB COMFORT	K. 16
7.1	SOUND LEVEL	K. 16
7.2	VIBRATION LEVEL	K. 17

L - MAINTENANCE

1	RECOMMENDATIONS	L. 2
2	TOWING	L. 8
3	TRANSPORT	L. 10
4	USING A JACK	L. 11
5	REPLACING A WHEEL	L. 12
6	LOADING AND STOWING THE TRACTOR	L. 13
7	STORAGE	L. 14
8	DECOMMISSIONING AND DESTRUCTION	L. 16
9	FREQUENCIES	L. 17
9.1	SUMMARY TABLE	L. 17
9.2	OPERATIONS	L. 20
10	BLEEDING AIR FROM THE INJECTION SYSTEM	L. 68
11	MAINTENANCE LOGBOOK	L. 69

M - OPERATIONS THAT ARE MANDATORY UNDER THE GUARANTEE

1	OPERATIONS MANDATORY UNDER THE TERMS OF THE CONTRACTUAL GUARANTEE	M. 2
1.1	PRE-DELIVERY INSPECTION	M. 2
1.2	HANDING OVER TO THE CUSTOMER	M. 2
1.3	MANDATORY ROUTINE MAINTENANCE	M. 2
1.4	MANDATORY INSPECTIONS	M. 3

A - IDENTIFICATION - CERTIFICATION - SAFETY

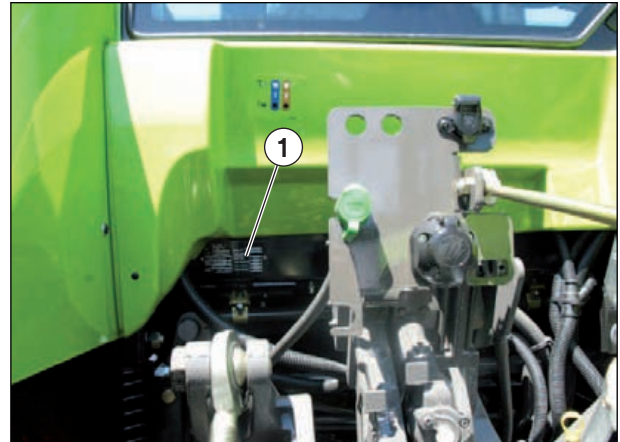




1 TRACTOR INFORMATION PLATE

6563

In any mail or order, always indicate the tractor identification number, tractor model, and engine serial number. The tractor information plate (1) is located on the left, behind the cab.



841msn44m

	Type :
	Vehicle identification number:

- A – Type of tractor.
- B – Tractor identification number (This number is also stamped on the right-hand side of the front chassis).
- C – Reception number per CE type.
- D – Maximum acceptable weight (kg).
- E – Maximum acceptable load on the front axle according to the tires (kg).
- F – Maximum load acceptable on the rear axle according to the tires (kg).
- G – Acceptable tow weight without brake (kg).
- H – Acceptable tow weight with independent brake (kg).
- I – Acceptable tow weight with inertia brake (kg).
- J – Acceptable tow weight with power brakes (hydraulic/pneumatic) (kg).

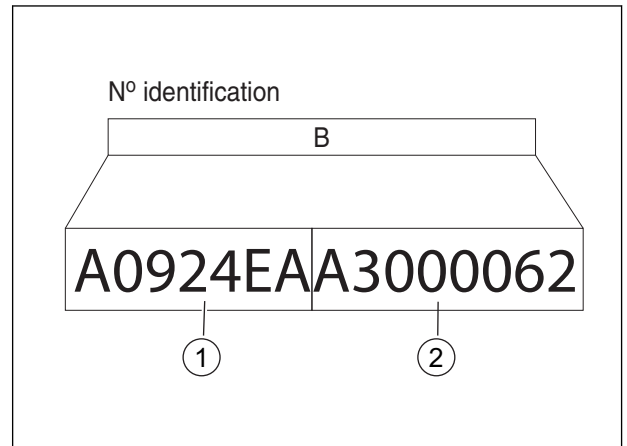
①

CLAAS		
Type	A	Essieu AR
N° CEE	C	F
N° identification	B	Masse remorquable admissible (Kg)
Masse totale admissible (Kg) (suivant pneumatiques)	D	sans frein
Essieu AV	E	frein mécanique
		frein à inertie
		freins assistés
		G
		H
		I
		J

841hsn50m



The tractor's identification number (B) is composed of the regulation type (1) and serial number (2) of the tractor (the example given opposite is completely fictitious).



841hsn03m

Tractor regulation type

The regulation type (1) is broken down in the following manner:

Type of tractor	Engine power code	Number of drive wheels	Cabin type	Maximum tractor speed
A09	5: AXION 810 6: AXION 820 2: AXION 830 3: AXION 840 4: AXION 850	4	E: Suspended cabin F: Suspended actuated cab	A: 40 km/h C: 50 km/h

Tractor serial number

The tractor's serial number (2) is composed of the tractor type "A30" followed by a 5 digit number.

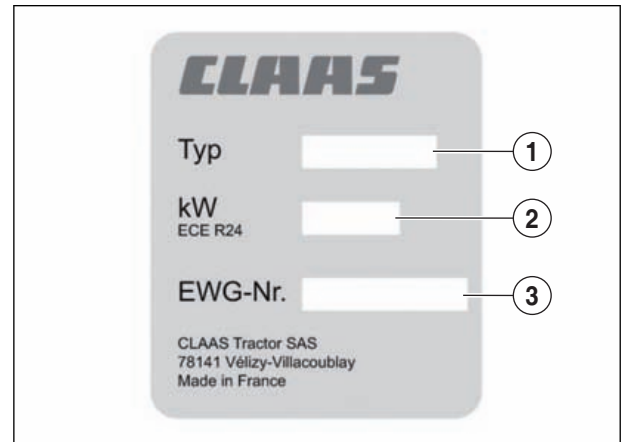


2 TRACTOR POWER LABEL

6564

A label indicating the tractor's power is affixed to the left-hand side of the cab's rear apron (according to the national legislation in force in the country where the tractor is used).

- 1 – Tractor type.
- 2 – Power.
- 3 – EEC certification number.



841hsn04m



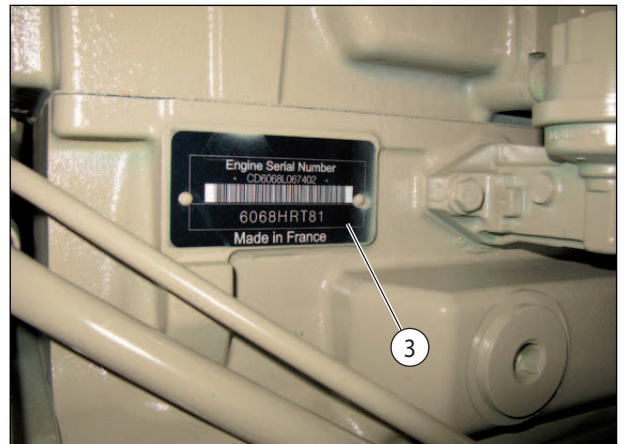
3 MOTOR INFORMATION PLATE

6565

Remove the cover (2) located on the right side of the engine to expose the identification plate (3).
This plate contains the engine type and serial number.



101hsn04



101hsn00

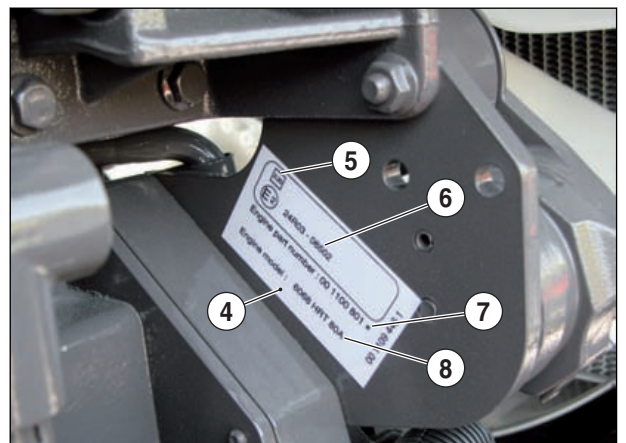
	Type :
--	---------------

	Serial number:
--	-----------------------

The emissions (4) certification label is located on the right-hand side of the engine.

This label provides information on the engine (Manufacturer data).

- 5- The rate of absorption.
- 6- The certification Nr.
- 7- Engine serial n°.
- 8- The type of engine.



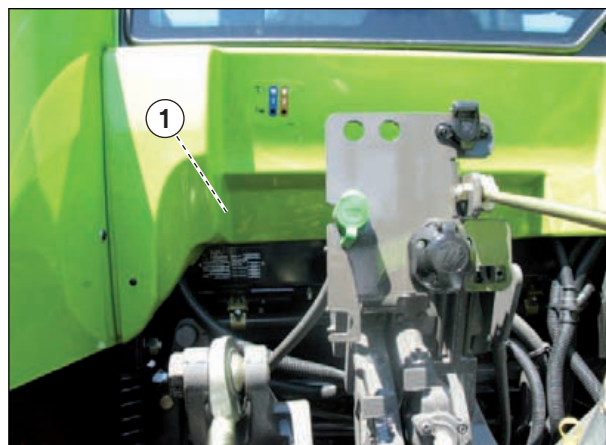
101hsn14



4 CAB IDENTIFICATION PLATE

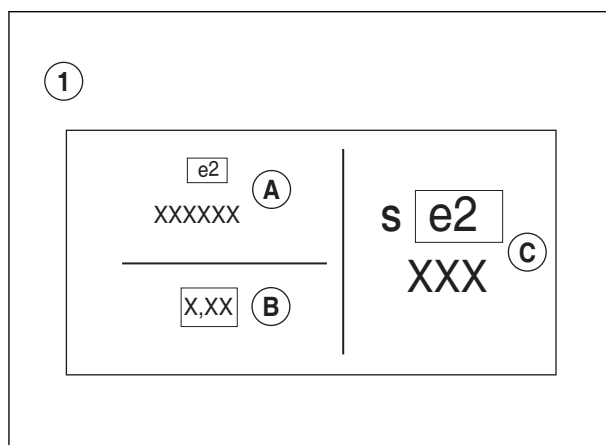
6566

Plate (1) is located behind the rear panel.



841msn03m

- A – Reception number per EMC type (Electromagnetic compatibility).
- B – Absorption ratio.
- C – Homologation number per cab type.



841hsn01m

Thank you so much for reading.
Please click the “Buy Now!”
button below to download the
complete manual.



After you pay.

You can download the most
perfect and complete manual in
the world immediately.

Our support email:

ebooklibonline@outlook.com