

CLAAS



AXION 840-820-810 CMATIC

Operator's manual

SERVICE & PARTS

VALIDITY OF THE INSTRUCTIONS

5542

This operator's manual is valid for the following tractors:

Type of tractor	Tractor serial number	
	From	To
AXION	A3100050	

The operator's manual describes the possible equipment for your tractor. Your tractor's equipment is listed in your order confirmation.

UNITS

The units used in this document are in line with international system of units:

<i>Physical</i>	<i>Unit Name</i>	<i>Symbol of unity</i>	<i>Multiples and sub-multiples of the unit</i>
Size	Metre	m	mm - cm
Volume	Cubic meter	m ³	cm ³ - dm ³
	Liter	l	ml - cl
Angle	Degree	°	
Time	Second	s	
	Minute	min	
	Hour	h	
Linear speed	Kilometer per hour	km/h	m/h
Rotation speed	Revolution per minute	1/min	
Weight	Kilogram	kg	g
Forced	Newton	N	
Torque	Newton meter	Nm	
Pressure	Pascal	Pa	
Power	Watt	W	kW
Flow rate	Liter per minute	l/min	
Temperature	Degree Celsius	°C	
Power voltage	Volt	V	mV
Electric intensity	Ampere	A	mA
Resistor	Ohm	Ω	kΩ
Sound level	Bel	B(A)	dB(A)









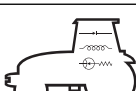



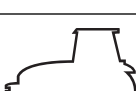
The date format used in this document also complies with the international system:

Year-Month-Day

Example: 2010-07-15

CHAPTER SYMBOLS

5618

REF	CHAPTERS	SYMBOLS
A	IDENTIFICATION - CERTIFICATION - SAFETY	
B	CAB	
C	ELECTRICAL SERVICES	
D	ENGINE	
E	TRANSMISSION	
F	FRONT AXLE	
G	REAR EQUIPMENT	
H	FRONT EQUIPMENT	
I	CEBIS TERMINAL	
J	WHEELS AND TYRES	
K	CHARACTERISTICS	
L	MAINTENANCE	
M	OPERATIONS THAT ARE MANDATORY UNDER THE GUARANTEE	

CONTENTS

A - IDENTIFICATION - CERTIFICATION - SAFETY

1	TRACTOR INFORMATION PLATE	A. 2
2	TRACTOR POWER LABEL	A. 4
3	MOTOR INFORMATION PLATE	A. 5
4	CAB IDENTIFICATION PLATE	A. 6
5	EUROPEAN REGULATION	A. 7
6	SAFETY	A. 8
6.1	SAFETY INSTRUCTIONS	A. 8
6.2	SAFETY STICKERS WITH WARNING PICTOGRAMS	A. 23

B - CAB

1	OPERATING AND WORKING ENVIRONMENT	B. 2
1.1	INSTRUMENTS AND CONTROLS (DRIVING POSITION)	B. 2
1.2	INSTRUMENTS AND CONTROLS (PANEL)	B. 4
1.3	STOWAGE AND ACCESSORIES	B. 5
2	LIGHTING, INDICATORS AND SAFETY	B. 6
2.1	DESCRIPTION	B. 6
2.2	LOW/HIGH BEAMS AND HORN	B. 7
2.3	WORKING LIGHTS AND ROTATING BEACON	B. 8
2.4	OVERHEAD LIGHT	B. 9
2.5	REAR VIEW MIRRORS	B. 9
3	STARTING CONTACT	B. 11
4	MULTIFUNCTION ARMREST	B. 12
5	CAB SUSPENSION	B. 13
5.1	Z-ACTIV CAB	B. 13
5.2	Z CAB	B. 14
6	SEATS	B. 16
6.1	DRIVER'S SEAT	B. 16
6.2	PASSENGER SEAT	B. 18
7	STEERING WHEEL	B. 20
8	INSTRUMENT PANEL	B. 21
8.1	DESCRIPTION	B. 21
8.2	OPERATION	B. 23
8.3	OPERATION	B. 25
8.4	CALIBRATION	B. 26
9	DISPLAY	B. 28
9.1	CEBIS TERMINAL	B. 28

10	HINGED PANELS AND WINDOWS	B. 29
11	SIGHT	B. 33
12	HEATING - VENTILATION - MANUAL AIR CONDITIONING	B. 34
12.1	DESCRIPTION	B. 34
12.2	OPERATION	B. 34
13	HEATING/VENTILATION/AUTOMATIC CLIMATE CONTROL	B. 39
13.1	DESCRIPTION	B. 39
13.2	OPERATION	B. 39

C - ELECTRICAL SYSTEM

1	CHARACTERISTICS	C. 2
2	TRAILER/IMPLEMENT LIGHT SOCKET	C. 3
3	ELECTRIC CABINET SUPPLY SOCKET	C. 5
4	EVENT COUNTER SOCKET	C. 6
5	ISO SOCKET	C. 7
6	ISOBUS SOCKET	C. 8
7	PROVISION FOR THE INSTALLATION OF A CONTROL CASING IN THE CAB	C. 9
7.1	FITTING BOX MOUNTING	C. 9
7.2	CABLE ROUTING	C. 9
8	BATTERY	C. 10
8.1	BATTERY COMPARTMENT	C. 10
8.2	BATTERY MASTER SWITCH	C. 11
9	FUSES AND RELAYS	C. 12
9.1	RECOMMENDATIONS	C. 12
9.2	CAB-MOUNTED SERVICES FUSE BOX	C. 12
9.3	CAB TOP FUSE BOX	C. 15
9.4	PRIMARY SERVICES FUSE BOX	C. 18

D - ENGINE

1	CHARACTERISTICS	D. 2
2	DISPLAYS	D. 5
2.1	INSTRUMENT PANEL	D. 5
2.2	CEBIS TERMINAL	D. 5
3	SAFETY	D. 6
3.1	OPERATION	D. 6
3.2	CEBIS TERMINAL	D. 6
3.3	INSTRUMENT PANEL	D. 6
3.4	RECOMMENDATIONS	D. 6
4	ENGINE HOOD	D. 8
4.1	ONE-PIECE HOOD	D. 8
4.2	SIDE PANELS	D. 8

5	ENGINE CONTROL	D. 10
5.1	STARTING THE ENGINE	D. 10
5.2	USING THE ACCELERATOR PEDAL AND LEVER	D. 13
5.3	STOPPING THE ENGINE	D. 16
6	CLAAS POWER MANAGEMENT	D. 17
7	FUEL	D. 18
7.1	RECOMMENDATIONS	D. 18
7.2	BLEEDING AIR FROM THE INJECTION SYSTEM	D. 19

E - TRANSMISSION

GEARBOX

1	CHARACTERISTICS	E. 4
2	DISPLAY	E. 5
3	SAFETY	E. 6
3.1	REVERSER NEUTRAL	E. 6
3.2	TRANSMISSION NEUTRAL	E. 6
3.3	ENGINE ANTI-STALL	E. 7
3.4	PROTECTION OF MECHANICAL PARTS	E. 8
4	STARTING THE TRACTOR	E. 9
4.1	CLUTCH	E. 9
4.2	SELECTION OF MOVEMENT DIRECTION	E. 10
4.3	ACTIVE STOP	E. 11
5	BASIC OPERATION	E. 12
6	ADVANCED DRIVING	E. 14
6.1	OPERATION	E. 14
6.2	AUTOMATIC MODE	E. 16
6.3	DRIVESTICK MODE	E. 20
6.4	MANUAL	E. 24
6.5	SPEED RANGES	E. 29
6.6	MAXIMUM SPEEDS AND SET SPEEDS	E. 30
6.7	ACCELERATION	E. 34
6.8	DROOP	E. 35
6.9	DEGRADED MODE	E. 36

REAR AXLE

1	CHARACTERISTICS	E. 38
2	DISPLAY	E. 40
3	PROTECTION OF MECHANICAL PARTS	E. 41
3.1	OPERATION	E. 41
3.2	INSTRUMENT PANEL	E. 41
3.3	CEBIS TERMINAL	E. 41
4	DIFFERENTIAL LOCK	E. 42
4.1	RECOMMENDATIONS	E. 42
4.2	OPERATION	E. 42
4.3	AUTOMATIC MODE	E. 42
4.4	PERMANENT MODE	E. 44
5	BRAKES	E. 45
5.1	SERVICE BRAKES	E. 45
5.2	HANDBRAKE (AUXILIARY AND PARKING BRAKE)	E. 45
6	TRAILER BRAKE	E. 48
6.1	HYDRAULIC BRAKE	E. 48
6.2	PNEUMATIC BRAKE	E. 49

F - FRONT AXLE

1	CHARACTERISTICS	F. 2
2	PROTECTION OF MECHANICAL PARTS	F. 4
2.1	OPERATION	F. 4
2.2	INSTRUMENT PANEL	F. 4
2.3	CEBIS TERMINAL	F. 4
3	FRONT AXLE ENGAGEMENT	F. 5
3.1	OPERATION	F. 5
3.2	AUTOMATIC MODE	F. 5
3.3	PERMANENT MODE	F. 6
4	DIFFERENTIAL LOCK	F. 8
4.1	RECOMMENDATIONS	F. 8
4.2	OPERATION	F. 8
4.3	AUTOMATIC MODE	F. 8
4.4	PERMANENT MODE	F. 10
5	SUSPENDED FRONT AXLE	F. 11
5.1	OPERATION	F. 11
5.2	FIXED MODE	F. 11
5.3	AUTOMATIC MODE	F. 12

G - REAR EQUIPMENT

HYDRAULIC SYSTEMS

1	CHARACTERISTICS	G. 4
2	AUXILIARY SPOOL VALVES	G. 5
2.1	ASSOCIATION BETWEEN CONTROLS/REAR PRESSURE CONNECTORS	G. 5
2.2	PRESSURE CONNECTORS	G. 7
2.3	CONTROLS	G. 10
2.4	SAFETY	G. 11
2.5	START UP	G. 11
2.6	LINEAR CONTROLS	G. 13
2.7	JOYSTICK	G. 13
2.8	EXTERNAL CONTROLS	G. 15
2.9	MANAGEMENT OF ELECTROHYDRAULIC SPOOL VALVES	G. 15
3	POWER BEYOND	G. 19
3.1	DESCRIPTION	G. 19
3.2	OPERATION	G. 19
3.3	OPERATION	G. 19
4	STATIONARY WORKING	G. 20

REAR LIFT

1	CHARACTERISTICS	G. 22
2	CONTROLS	G. 23
3	DISPLAY	G. 25
4	SAFETY	G. 26
4.1	PROTECTION OF MECHANICAL PARTS	G. 26
4.2	WARNING LIGHT	G. 26
4.3	CEBIS TERMINAL	G. 26
4.4	ROAD TRANSPORT SAFETY	G. 26
5	USING THE LINKAGE	G. 28
6	MODE SELECTION	G. 29
7	POSITION CONTROL	G. 30
8	FORCE CONTROL	G. 31
9	UPPER LIMIT	G. 33
10	LOWERING SPEED	G. 34
11	TRANSPORT DAMPER	G. 35
12	ACTIVE WHEEL SLIP MANAGEMENT	G. 36
12.1	OPERATION	G. 36
12.2	ADJUSTMENT	G. 36
12.3	OPERATION	G. 37

13	EXTERNAL CONTROLS	G. 38
13.1	OPERATION	G. 38
13.2	OPERATION	G. 38

REAR POWER TAKE-OFF

1	CHARACTERISTICS	G. 42
2	RECOMMENDATIONS	G. 43
3	CONTROLS	G. 44
4	DISPLAY	G. 45
5	PTO SPEED SELECTION	G. 46
6	OPERATION	G. 47
7	EXTERNAL CONTROLS	G. 48
8	OPERATION	G. 49
9	PTO AUTOMATION	G. 50
9.1	OPERATION	G. 50
9.2	MANUAL ADJUSTMENT	G. 50
9.3	CEBIS PANEL ADJUSTMENT	G. 51
10	POWER TAKE-OFF END FITTING	G. 52
11	CONNECTING IMPLEMENTS TO THE POWER TAKE-OFF	G. 53
12	STATIONARY WORKING	G. 54

REAR HITCH

1	CHARACTERISTICS	G. 56
2	RECOMMENDATIONS	G. 58
3	ADJUSTABLE LINKS	G. 60
4	UPPER LINK	G. 61
4.1	MECHANICAL UPPER ROD	G. 61
4.2	UPPER TOP LINKAGE	G. 61
5	AUTOMATIC HOOKS	G. 62
6	STABILISERS	G. 64
6.1	OPERATION	G. 64
6.2	MECHANICAL STABILISERS	G. 64
6.3	SELF-LOCKING STABILISERS	G. 64

7	DRAW BAR COUPLINGS	G. 65
8	SWINGING DRAWBAR	G. 67
9	TOW HOOK	G. 69
10	AUTOMATIC PICK-UP HITCH	G. 70

H - FRONT EQUIPMENT

HYDRAULIC SYSTEMS

1	CHARACTERISTICS	H. 4
2	PRESSURE CONNECTORS	H. 5
2.1	RECOMMENDATIONS	H. 5
2.2	OPERATION	H. 5
2.3	FREE RETURN TO THE TANK	H. 6
3	SAFETY	H. 7
3.1	PROTECTION OF MECHANICAL PARTS	H. 7
3.2	CEBIS TERMINAL	H. 7
4	FRONT PRESSURE TAPS CONTROLLED BY SPOOL VALVE 3	H. 8
4.1	DESCRIPTION	H. 8
4.2	CONTROLS	H. 8
4.3	PRELIMINARY OPERATIONS	H. 9
4.4	OPERATION	H. 9
5	FRONT PRESSURE TAPS CONTROLLED BY SPOOL VALVE 7	H. 11
5.1	DESCRIPTION	H. 11
5.2	CONTROLS	H. 11
5.3	PRELIMINARY OPERATIONS	H. 12
5.4	OPERATION	H. 13
6	FRONT PRESSURE TAPS CONTROLLED BY SPOOL VALVES 7 AND 8	H. 15
6.1	DESCRIPTION	H. 15
6.2	CONTROLS	H. 15
6.3	PRELIMINARY OPERATIONS	H. 16
6.4	OPERATION	H. 16
7	MANAGEMENT OF ELECTROHYDRAULIC SPOOL VALVES	H. 19

FRONT LINKAGE

1	CHARACTERISTICS	H. 22
2	FRONT LINKAGE CONTROLLED BY SPOOL VALVE 1	H. 23
2.1	CONTROLS	H. 23
2.2	SAFETY	H. 24
2.3	PRELIMINARY OPERATIONS	H. 25
2.4	OPERATION	H. 26
2.5	EXTERNAL CONTROLS	H. 28

3	TRANSPORT DAMPER	H. 29
4	FRONT LINKAGE CONTROLLED BY SPOOL VALVE 6	H. 30
4.1	CONTROLS	H. 30
4.2	SAFETY	H. 31
4.3	PRELIMINARY OPERATIONS	H. 32
4.4	OPERATION	H. 33
4.5	EXTERNAL CONTROLS	H. 35
5	POSITION CONTROL	H. 36
5.1	DISPLAY	H. 36
5.2	DESCRIPTION OF ADJUSTMENTS	H. 37
5.3	ACTIVATION OF POSITION CONTROL	H. 37
5.4	UPPER LIMIT ADJUSTMENT	H. 38
5.5	ADJUSTMENT OF THE BOTTOM STOP	H. 38
5.6	RAISING SPEED ADJUSTMENT	H. 39
5.7	RATE OF DESCENT ADJUSTMENT	H. 39
5.8	USING THE POSITION CONTROL	H. 40
6	3-POINT HITCH	H. 42
6.1	LOWER LINKS	H. 42
6.2	UPPER LINK	H. 43
6.3	HITCHING AND UNHITCHING THE TOOL	H. 43

FRONT POWER TAKE-OFF

1	CHARACTERISTICS	H. 48
2	DISPLAY	H. 49
3	RECOMMENDATIONS	H. 50
4	FRONT POWER TAKE-OFF ENGAGEMENT	H. 52
5	STOP OF THE FRONT POWER TAKE-OFF	H. 53

FRONT LOADER

1	FITTING A FRONTAL LOADER ADAPTATION FRAME	H. 56
2	OPERATION	H. 58

I - CEBIS TERMINAL

USING THE CEBIS TERMINAL

1	DESCRIPTION	I. 4
2	OPERATION	I. 5
3	OPERATION	I. 6
4	MULTIFUNCTION DISPLAY	I. 7
4.1	OPERATION	I. 7
4.2	WORK SCREEN	I. 8
4.3	ROAD SCREEN	I. 11
5	DIRECT ACCESS	I. 14
5.1	OPERATION	I. 14
5.2	OPERATION	I. 15
6	MALFUNCTIONS	I. 16
6.1	OPERATION	I. 16
6.2	WARNINGS	I. 16
6.3	WARNING	I. 17
6.4	INFORMATION	I. 19
6.5	ICON	I. 20
7	MENU	I. 21
7.1	MAIN MENU	I. 21
7.2	TRANSMISSION	I. 22
7.3	LIFT	I. 24
7.4	HYDRAULICS	I. 25
7.5	ON BOARD COMPUTER	I. 26
7.6	CLAAS SEQUENCE MANAGEMENT	I. 29
7.7	PREVIEWING A CLAAS SEQUENCE MANAGEMENT SEQUENCE IN REAL TIME	I. 30

ON BOARD COMPUTER

1	OPERATION	I. 32
2	GENERAL PERFORMANCE	I. 33
2.1	OPERATION	I. 33
2.2	SELECTING INFORMATION FOR DISPLAY IN THE PROGRAMMABLE WINDOW	I. 34
2.3	COUNTER RESETTING	I. 34
3	PLOT MANAGEMENT	I. 35
3.1	OPERATION	I. 35
3.2	COMPUTER START/SHUT DOWN	I. 36
3.3	PLOT MANAGEMENT EDITOR	I. 37
4	IMPLEMENT SETTINGS	I. 39
4.1	WORKING WIDTH	I. 39
4.2	COUNTING MODE	I. 39
4.3	SELECTING THE THEORETICAL OR ACTUAL SPEED	I. 40
4.4	TOOL MANAGEMENT	I. 40
5	MAINTENANCE	I. 46
5.1	MAINTENANCE COUNTER	I. 46
5.2	LIST OF ACTIVE DEFECTS	I. 47
5.3	GEARBOX OIL TEMPERATURE	I. 48
6	F1, F2, F3 AND F4 FUNCTION CONTACTS	I. 49
6.1	OPERATION	I. 49
6.2	ADJUSTMENT	I. 49
7	CEBIS	I. 53
7.1	BRIGHTNESS	I. 53
7.2	LANGUAGES AND UNITS	I. 55
7.3	DATE AND TIME	I. 56

CLAAS SEQUENCE MANAGEMENT

1	OPERATION	I. 58
2	OPERATION	I. 59
3	CONTROLS	I. 60
3.1	DESCRIPTION	I. 60
4	SAFETY	I. 61
4.1	PROTECTION OF MECHANICAL PARTS	I. 61
5	LAUNCHING A SEQUENCE	I. 62
5.1	OPERATION	I. 62
5.2	OPERATION	I. 64

6	SAVING A SEQUENCE	I. 68
7	INTERRUPTING A SEQUENCE	I. 71
7.1	TO RESUME THE CURRENT SEQUENCE, PRESS THE SAME CONTACT	I. 71
7.2	CANCELLING A PAUSED SEQUENCE	I. 71
7.3	CANCELLING AN ONGOING SEQUENCE	I. 72
7.4	CANCELLING ONGOING ACTIONS	I. 72
7.5	EMERGENCY STOP	I. 73
8	VIEWING A SEQUENCE	I. 74
8.1	VIEWING IN THE INFO MODE	I. 74
8.2	VIEWING IN REAL-TIME MODE	I. 75
9	SEQUENCE MODIFICATION	I. 76
9.1	OPERATION	I. 76
9.2	MODIFYING A STAGE IN A SEQUENCE	I. 77
9.3	ADDING A STAGE IN A SEQUENCE	I. 79
9.4	DELETING A STAGE IN A SEQUENCE	I. 80
9.5	SELECTING THE REGISTRATION MODE OF A SEQUENCE	I. 80

J - WHEELS AND TYRES

1	TYRES	J. 2
1.1	RECOMMENDATIONS	J. 2
1.2	INFLATION PRESSURE	J. 3
1.3	LOAD INDEX	J. 4
1.4	SPEED CODE	J. 5
2	TRACK WIDTHS	J. 6
2.1	SETTING THE TRACK	J. 6
2.2	FRONT TRACKS	J. 8
2.3	REAR TRACKS	J. 17
2.4	TYRE COMBINATIONS	J. 29
3	WHEELS	J. 32
3.1	GENERAL	J. 32
3.2	DUAL WHEELS	J. 32

K - CHARACTERISTICS

1	DIMENSIONS	K. 2
2	WEIGHT	K. 3
3	LOAD-BEARING CAPABILITIES	K. 4
4	MAXIMUM TOW WEIGHT AUTHORIZED	K. 5
5	CAPACITIES	K. 6
6	BALLAST	K. 8
6.1	BALLASTING AVAILABLE	K. 8
6.2	TRACTOR BALANCING	K. 13

7	CAB COMFORT	K. 16
7.1	SOUND LEVEL	K. 16
7.2	VIBRATION LEVEL	K. 17

L - MAINTENANCE

1	RECOMMENDATIONS	L. 2
2	TOWING	L. 8
3	TRANSPORT	L. 10
4	USING A JACK	L. 11
5	REPLACING A WHEEL	L. 12
6	LOADING AND STOWING THE TRACTOR	L. 13
7	STORAGE	L. 14
8	DECOMMISSIONING AND DESTRUCTION	L. 16
9	FREQUENCY	L. 17
9.1	SUMMARY TABLE	L. 17
9.2	OPERATIONS	L. 20
10	BLEEDING AIR FROM THE INJECTION SYSTEM	L. 70
11	MAINTENANCE LOGBOOK	L. 71

M - OPERATIONS THAT ARE MANDATORY UNDER THE GUARANTEE

1	OPERATIONS MANDATORY UNDER THE TERMS OF THE CONTRACTUAL GUARANTEE	M. 2
1.1	PRE-DELIVERY INSPECTION	M. 2
1.2	HANDING OVER TO THE CUSTOMER	M. 2
1.3	MANDATORY ROUTINE MAINTENANCE	M. 2
1.4	MANDATORY INSPECTIONS	M. 3

A - IDENTIFICATION - CERTIFICATION - SAFETY

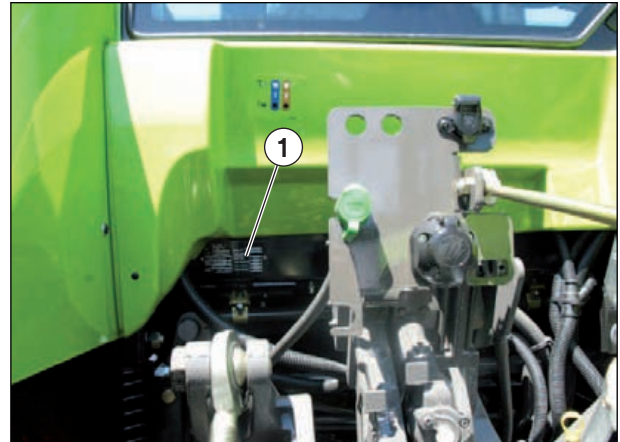




1 TRACTOR INFORMATION PLATE

6573

In any mail or order, always indicate the tractor identification number, tractor model, and engine serial number.
The tractor information plate (1) is located on the left, behind the cab.



841msn44m

	Type :
	Vehicle identification number:

- A – Type of tractor.
- B – Tractor identification number (This number is also stamped on the right-hand side of the front chassis).
- C – Reception number per CE type.
- D – Maximum acceptable weight (kg).
- E – Maximum acceptable load on the front axle according to the tires (kg).
- F – Maximum load acceptable on the rear axle according to the tires (kg).
- G – Acceptable tow weight without brake (kg).
- H – Acceptable tow weight with independent brake (kg).
- I – Acceptable tow weight with inertia brake (kg).
- J – Acceptable tow weight with power brakes (hydraulic/pneumatic) (kg).

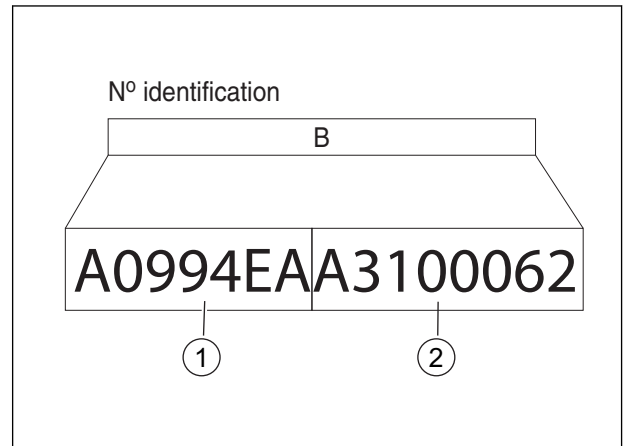
1

CLAAS			
Type	A	Essieu AR	F
N° CEE	C	Masse remorquable admissible (Kg)	
N° identification	B	sans frein	G
Masse totale admissible (Kg) (suivant pneumatiques)		frein mécanique	H
	D	frein à inertie	I
Essieu AV	E	freins assistés	J

841hsn50m



The tractor's identification number (B) is composed of the regulation type (1) and serial number (2) of the tractor (the example given opposite is completely fictitious).



841hsn05m

Tractor regulation type

The regulation type (1) is broken down in the following manner:

Type of tractor	Engine power code	Number of drive wheels	Cabin type	Maximum tractor speed
A31	7: AXION 810 8: AXION 820 9: AXION 840	4	E: Suspended cabin F: Suspended actuated cab	A: 40 km/h C: 50 km/h

Tractor serial number

The tractor's serial number (2) is composed of the tractor type "A31" followed by a 5 digit number.

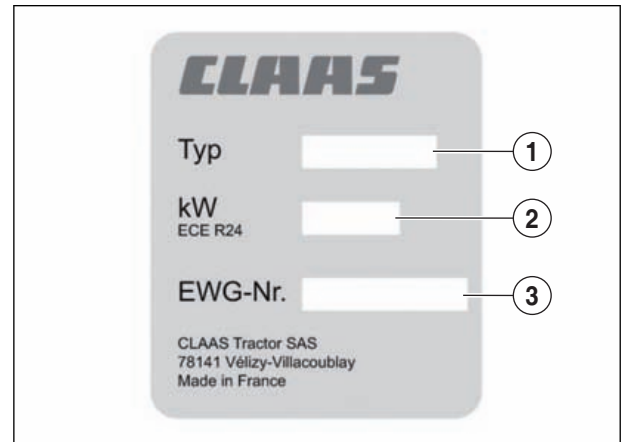


2 TRACTOR POWER LABEL

6564

A label indicating the tractor's power is affixed to the left-hand side of the cab's rear apron (according to the national legislation in force in the country where the tractor is used).

- 1 – Tractor type.
- 2 – Power.
- 3 – EEC certification number.



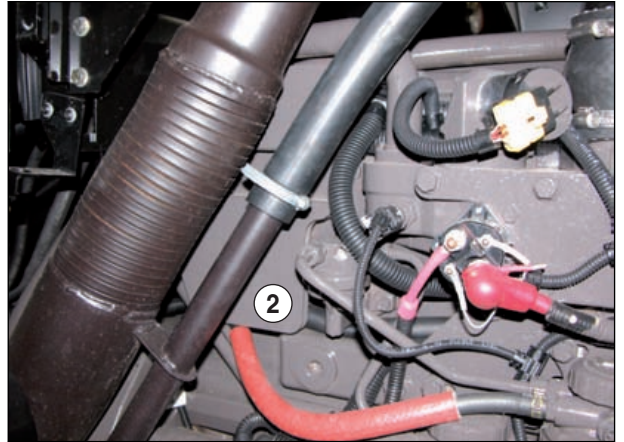
841hsn04m



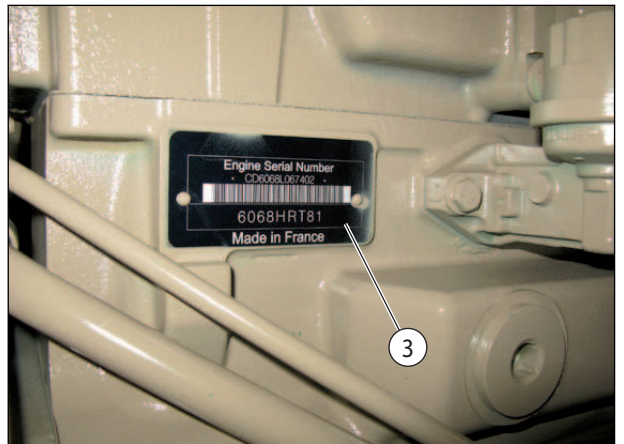
3 MOTOR INFORMATION PLATE

6565

Remove the cover (2) located on the right side of the engine to expose the identification plate (3).
This plate contains the engine type and serial number.



101hsn04



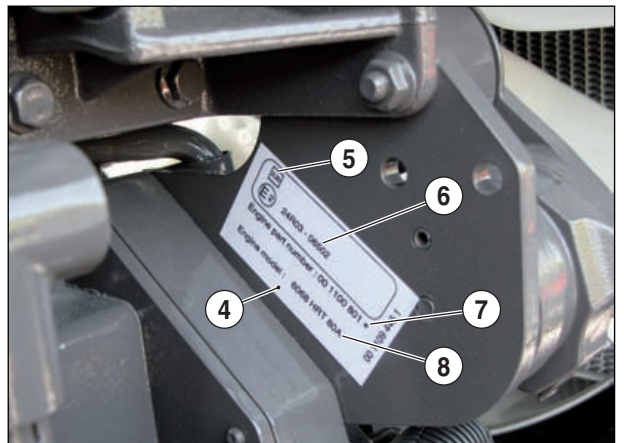
101hsn00

	<p>Type :</p>
	<p>Serial number:</p>

The emissions (4) certification label is located on the right-hand side of the engine.

This label provides information on the engine (Manufacturer data).

- 5- The rate of absorption.
- 6- The certification Nr.
- 7- Engine serial n°.
- 8- The type of engine.



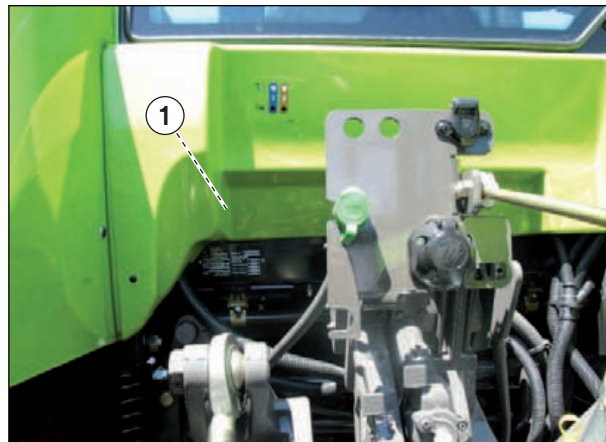
101hsn14



4 CAB IDENTIFICATION PLATE

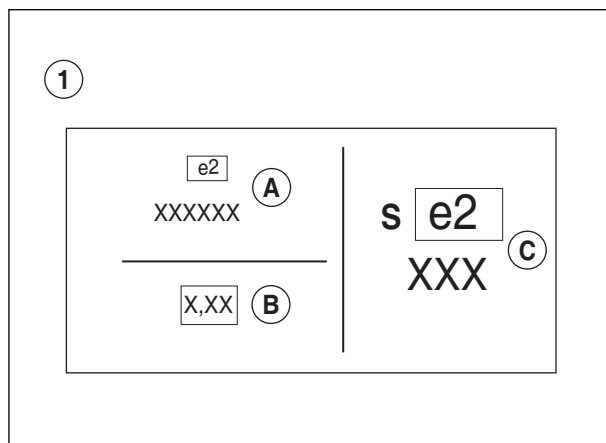
6566

Plate (1) is located behind the rear panel.



841msn03m

- A – Reception number per EMC type (Electromagnetic compatibility).
- B – Absorption ratio.
- C – Homologation number per cab type.



841hsn01m



5 EUROPEAN REGULATION

6552

CLAAS tractors put in circulation in the European Community meet modified European Directive 2003/37. A certificate of conformity is supplied when each tractor is delivered. Hence, the tractor's manufacturer ensures conformance of the tractor with the CE directive mentioned previously upon initial marketing.

In countries outside the European Union, apply the appropriate national provisions.



6 SAFETY

6.1 SAFETY INSTRUCTIONS

6.1.1 Appropriate use

6568

CLAAS tractors and farm tractors have been designed exclusively for professional use in line with the recognised rules governing farming practices and agricultural work.

CLAAS farm tractors have been designed and adapted to tow, move or carry tools / equipment / loads authorised by the manufacturer, and to control certain tools or compact using tools (weights) authorised by the manufacturer in the field and on public highways in line with the provisions of the highway code.

The agricultural tractor must be used, serviced and overhauled only by persons with perfect knowledge of the tractor, and informed of any risks.

A use conforming with the purpose presumes compliance with the instructions in the user manual, as well as rules of use, maintenance, and overhaul indicated by the manufacturer.

The user and owner is liable for complying with particular accident prevention instructions, as well as general rules in terms of safety, occupational medicine, and road legislation.

Any use other than that defined above is considered to be non-compliant with the purpose, and waives the manufacturer from any liability in case of damage ; the user will support alone any risks resulting from such a use.

Please call CLAAS for detailed and customised information to ensure compliant use in particular cases.

6.1.2 Use non conformant with the purpose

6569

Any use not foreseen by the manufacturer shall be considered to be inappropriate, and therefore incorrect. The manufacturer waives any liability in case of damage ; the user will support alone any risks resulting from such a use.

Examples of incorrect use of CLAAS tractors / farm tractors:

- Use of surfaces and spaces not defined as being work or maintenance zones in the user manual.
- Adjustment, cleaning, and maintenance operations contrary to the indications in the user manual.
- Performing repair and maintenance work while the system is on and / or the engine running.
- Non-compliance with the warnings on the tractor and in the user manual.
- Overhauling and repairing by staff not trained to this effect.
- Arbitrary modifications made to the tractor.
- Installation of unauthorised optional equipment.
- Use of spare parts not manufactured by CLAAS.
- Use of devices / equipment not authorised by the manufacturer.
- Use of the tractor to participate in sports events.
- Exceeding the total technical weight acceptable.
- Transporting persons outside of the seats intended for this purpose (Depending on the tractor equipment, a passenger seat may be used to transport one person).

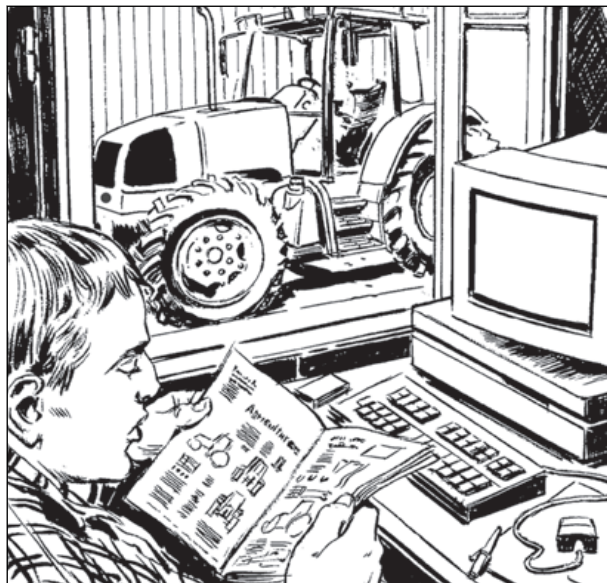


6.1.3 Precautions to be taken before starting up

5747

Caution is the best guarantee against any risk of accident. Before starting the operation of the tractor, read the operator's manual and all safety tips. Take into account all this information when using the tractor. This rule applies to everyone who uses the tractor involved in its maintenance, maintenance or inspections.

When the tractor is used by a person other than the owner, the latter must provide all explanations necessary to ensure risk-free work. The driver's position must be clean (Dashboard - Steering wheel - Floor - Pedals - Windscreen - Rear view mirrors - etc.).



001hsn25

Foosteps must always be clean (no mud) to avoid slipping when climbing or descending.

To climb into the tractor:

- Turn towards the driving position.
- Open the left-/right-hand door (Depending on equipment fit).
- When climbing the steps, always use the handles/handrails provided:
 - Only move one hand when both feet are supported.
 - Only move one foot when gripping with both hands.
- Sit in the driver's seat.
- Close the door (Depending on equipment fit).
- Buckle your seatbelt.

Do not climb into/out of a moving tractor.

Do not use the front wheels or any other accessory to climb into or out of the tractor.

Before starting the engine, make sure that all controls are in the neutral position, particularly the power take-off lever.

Only run the engine in well ventilated areas.

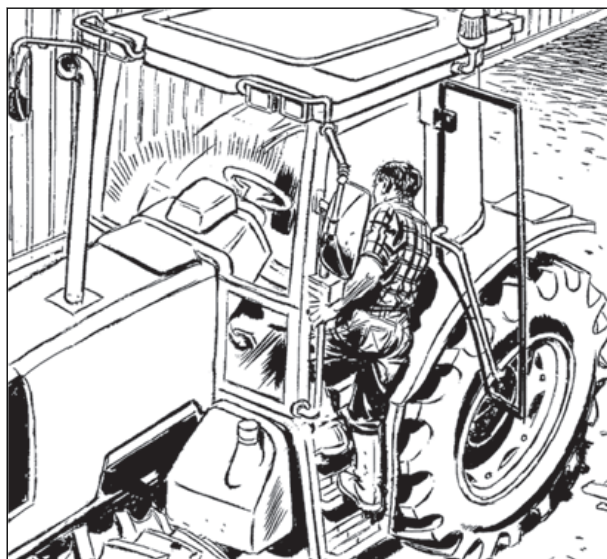
Make sure there is nobody nearby before starting the tractor.

Fully release the handbrake before moving the tractor forward.

Do not start work if the tractor is not working properly.

To climb down the tractor:

- Check that all commands are in neutral.
- Lower the tools against the ground.
- If required, stop the engine.
- Apply the handbrake.
- Remove your seatbelt.
- Open the door (Depending on equipment fit).
- Turn round to face the driving position when leaving the tractor.
- When descending the steps, always use the handles/handrails provided:



001hsn26



- Only move one hand when both feet are supported.
- Only move one foot when gripping with both hands.
- Close the door (Depending on equipment fit).

Do not exit the tractor by jumping.

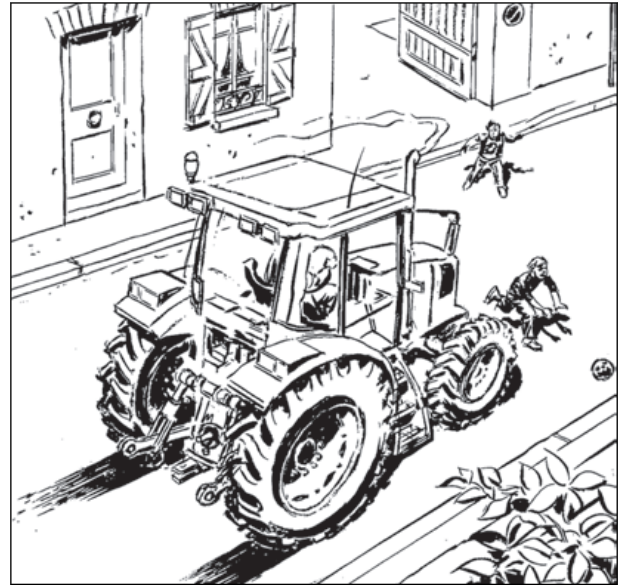
6.1.4 Tractor state

5748

Maintaining the tractor in the best possible condition, by carrying out all routine maintenance (oil changes, level checks, overhauls, adjustments and thorough cleaning) will allow it to be used in the safest and most profitable way.

Check the following items first:

- High temperature components:
 - Check that airborne particles such as straw, grass, wood chips etc., do not accumulate in high temperature areas.
 - Clear debris from around the engine and the exhaust system.
 - For tools attached to the front or the side of the tractor, inspect and clean the areas around the attachments for the various supports.
- Brakes:
 - Check that the brakes work properly.
 - Check the operation of the hand brake and foot brake.
 - Check that the front axle of the tractor is engaged when the brakes are actuated (service brakes or handbrake) (For tractors with 4 wheel drive).
- Steering:
 - Check the operation of the hydrostatic steering.
- Transmission:
 - Check the transmission fluid level (especially if external services are used).
- Hydraulic system:
 - Check the condition of the system (unions, pipes, hoses), particularly the hoses to the steering actuators.
- Electrical system:
 - Check the condition of the electrical system (batteries, wiring, headlights, indicator lights, hazard lights, rotating beacons, windscreen wipers, etc.).
- Lighting - indicators:
 - All lighting and indicating equipment must not only be in working order, but must be fully visible; clean them.
 - Carry a spare set of bulbs.
 - Replace any defective element.



001hsn27



001hsn28

Thank you so much for reading.
Please click the “Buy Now!”
button below to download the
complete manual.



After you pay.

You can download the most
perfect and complete manual in
the world immediately.

Our support email:

ebooklibonline@outlook.com