

Product: INDUSTRIAL ENGINE
Model: 3054C INDUSTRIAL ENGINE 334
Configuration: 3054C Industrial Engine 33400001-UP

Disassembly and Assembly 3054C Industrial Engine

Media Number -REN2433-03

Publication Date -01/11/2012

Date Updated -28/04/2017

i01913195

Fuel Injection Pump - Install - Bosch EVPE

SMCS - 1251-012

Installation Procedure

Table 1

Required Tools			
Tool	Part Number	Part Name	Qty
A	230-6284	Timing Pin (Camshaft)	1
B	230-6283	Timing Pin (Crankshaft)	1
C	9U-6198	Crankshaft Turning Tool	1

NOTICE

Keep all parts clean from contaminants.

Contaminants may cause rapid wear and shortened component life.

1. Use Tooling (C) to ensure that the No. 1 cylinder is at the top center compression stroke. Refer to Testing and Adjusting, "Fuel Injection Timing - Check".

Note: Install Tooling (A) through the camshaft gear. Install Tooling (B) through the crankshaft web.

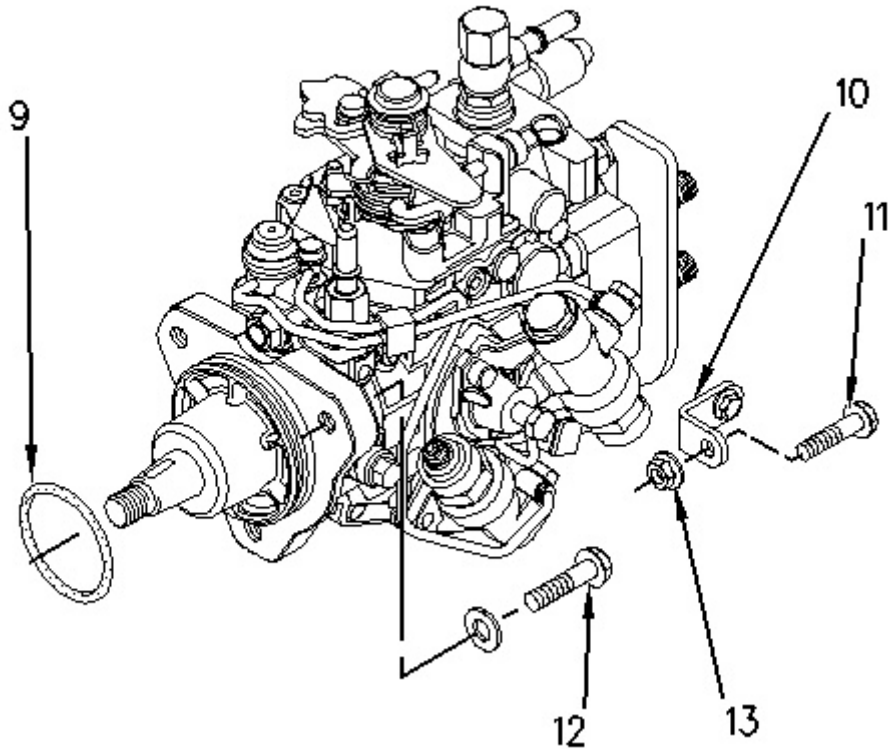


Illustration 1

g00996474

2. Install O-ring seal (9) on the fuel injection pump. Position the fuel injection pump on the front housing. Install bolts (12). Tighten the bolts to a torque of 25 N·m (18 lb ft).
3. If necessary, install the bolt and bracket (10) on the cylinder block. Tighten the bolt to a torque of 44 N·m (32 lb ft).
4. Install bolt (11) and nut (13).

Note: Ensure that the mating surfaces of the fuel injection pump gear and the shaft of the fuel injection pump are clean. Lubricate the threads of the shaft for the fuel injection pump. The nut must turn freely until contact is made with the fuel injection pump gear.

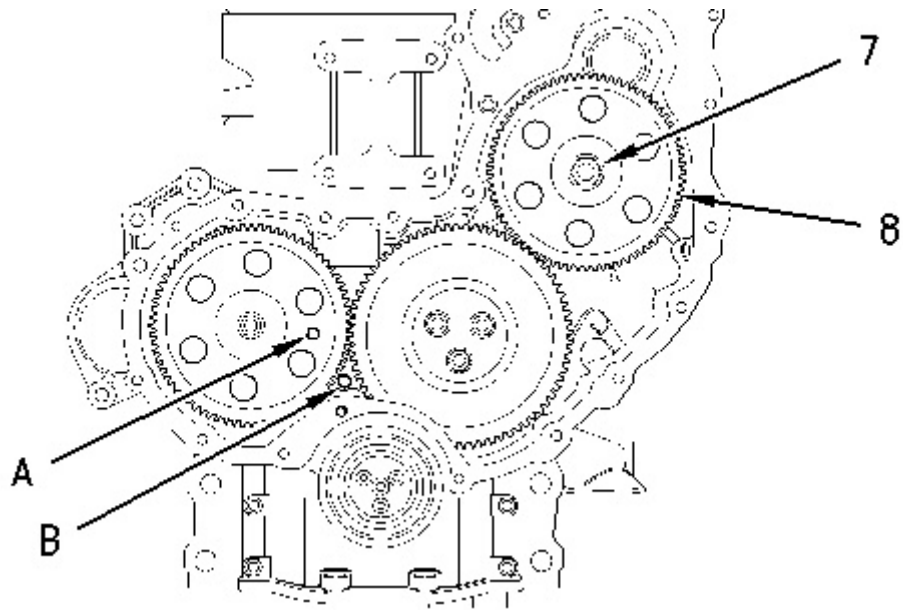


Illustration 2

g00996413

5. Position fuel injection pump gear (8) on the shaft of the fuel injection pump. Install the washer and nut (7). Rotate the fuel injection pump gear in a counterclockwise direction in order to remove the backlash. Tighten nut (7) to a torque of 24 N·m (17 lb ft).

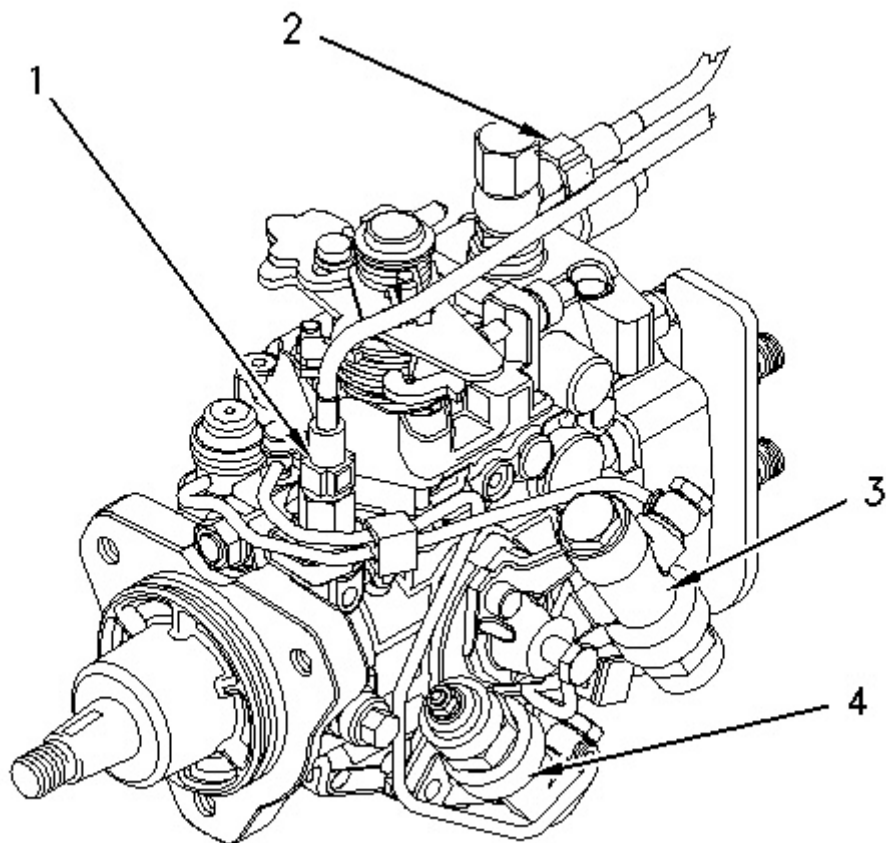


Illustration 3

g00996409

Thank you so much for reading.
Please click the “Buy Now!”
button below to download the
complete manual.



After you pay.

You can download the most
perfect and complete manual in
the world immediately.

Our support email:

ebooklibonline@outlook.com