

Product: EXCAVATOR

Model: 352F-VG EXCAVATOR KBP

Configuration: 352F-VG Excavator KBP00001-UP (MACHINE) POWERED BY C13 Engine

## Disassembly and Assembly 349F and 352F Excavators Machine Systems

Media Number -UENR0194-04

Publication Date -01/02/2018

Date Updated -21/02/2018

i07214355

## Travel Motor - Assemble

SMCS - 4351-016

## Assembly Procedure

Table 1

Required Tools			
Tool	Part Number	Part Description	Qty
A	1P-2420	Transmission Repair Stand	1
B	421-5662	Lifting Eye Assembly	1
C	154-6182	M12x1.75 mm Forcing Bolt	2
	6V-8149	M12x1.75 mm Nut	4
	5P-8245	M12 Hard Washer	4
E	8T-0276	M8x45mm Bolt	2
	9M-1974	M8 Hard Washer	2
F	6V-2055	Grease	-

---

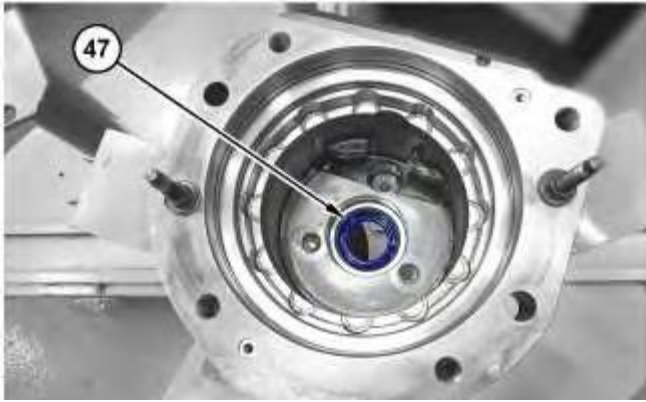


Illustration 1

g06254480



Illustration 2

g06254730

1. Install lip seal (47).

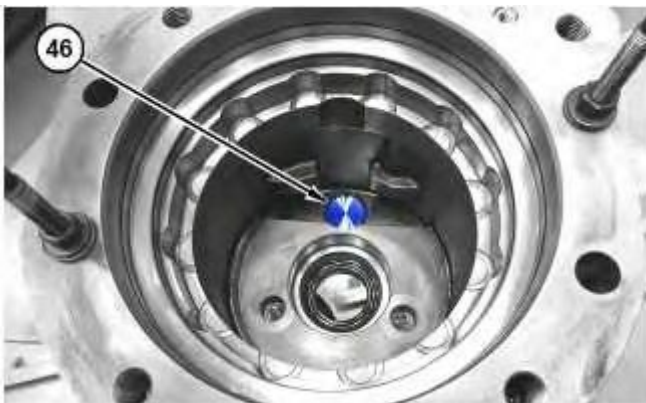


Illustration 3

g06254467

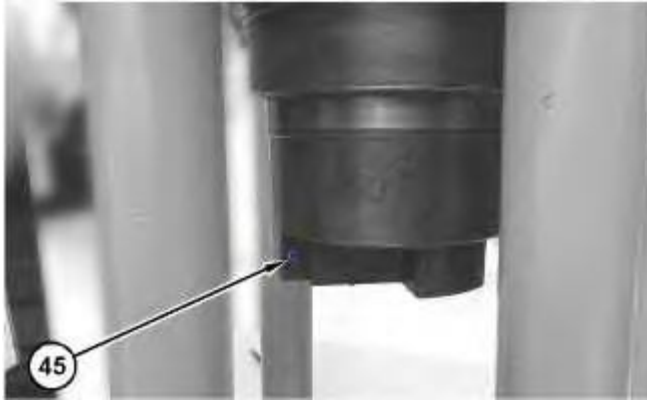


Illustration 4

g06254465

2. Install piston (46) and plug (45).

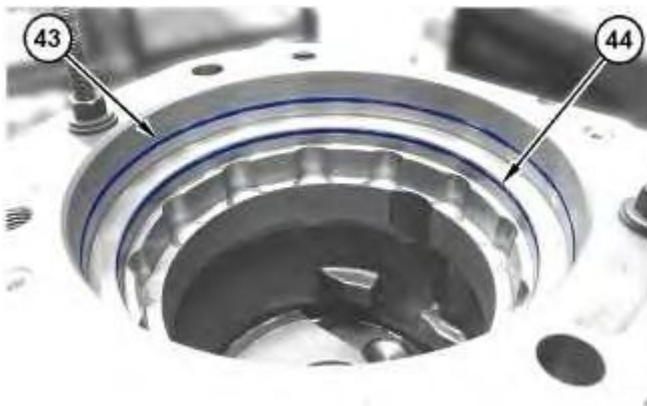


Illustration 5

g06254449

3. Install O-ring seal (44) and O-ring seal (43).



Illustration 6

g06254781

4. Use a suitable press to install bearing (42) on shaft assembly (39).

Thank you so much for reading.  
Please click the “Buy Now!”  
button below to download the  
complete manual.



After you pay.

You can download the most  
perfect and complete manual in  
the world immediately.

Our support email:

[ebooklibonline@outlook.com](mailto:ebooklibonline@outlook.com)