

Product: EXCAVATOR

Model: 390F L EXCAVATOR TYE

Configuration: 390F L Excavator TYE00001-UP (MACHINE) POWERED BY C18 Engine

Disassembly and Assembly 390F Excavator Machine Systems

Media Number -UENR0165-05

Publication Date -01/01/2018

Date Updated -24/01/2018

i05680270

Travel Motor - Disassemble

SMCS - 4351-015

Disassembly Procedure

Table 1

Required Tools			
Tool	Part Number	Part Description	Qty
A	138-7575	Link Bracket	2
B	1P-0074	Slide Hammer Puller Gp	1
C	123-4370	Threaded Rod M20 - 2.5	2
D	1P-1864	Pliers	1
E	1P-1858	Pliers	1
F	1P-0520	Driver Group	1
G	8T-0349	Bolt	2

Start By:

- a. Remove the travel motor.

NOTICE

Care must be taken to ensure that fluids are contained during performance of inspection, maintenance, testing, adjusting, and repair of the product. Be prepared to collect the fluid with suitable containers before opening any compartment or disassembling any component containing fluids.

Refer to Special Publication, NENG2500, "Dealer Service Tool Catalog" for tools and supplies suitable to collect and contain fluids on Cat products.

Dispose of all fluids according to local regulations and mandates.

Note: Cleanliness is an important factor. Before you begin the disassembly procedure, the exterior of the components should be thoroughly cleaned. This will help to prevent dirt from entering the internal mechanism. Precision components can be damaged by contaminants or by dirt. Perform disassembly procedures on a clean work surface. Keep components covered and protected at all times.

1. Place an alignment mark across all housings of the travel motor for assembly purposes.



Illustration 1

g01282832



Personal injury can result from parts and/or covers under spring pressure.

Spring force will be released when covers are removed.

Be prepared to hold spring loaded covers as the bolts are loosened.

2. Remove two socket head bolts (2) from head (1) that are 180 degrees from each other. Replace these two bolts with Tooling (G). Tooling (G) will retain the brake cover when the remaining socket head bolts (2) are removed.
 3. Carefully remove the remaining socket head bolts (2) that retain head (1) in position. Remove socket head bolts (2) evenly, in a crisscross pattern.
 4. Remove Tooling (G) from head (1).
-



Illustration 2

g01283040

5. Install Tooling (A) and a suitable lifting device to head (1).
6. Remove head (1) from the travel motor. The weight of head (1) is approximately 68 kg (150 lb).

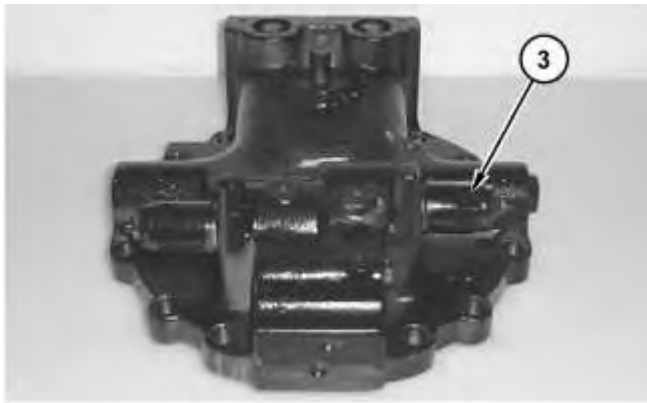


Illustration 3

g01283045

7. Remove relief valve (3).

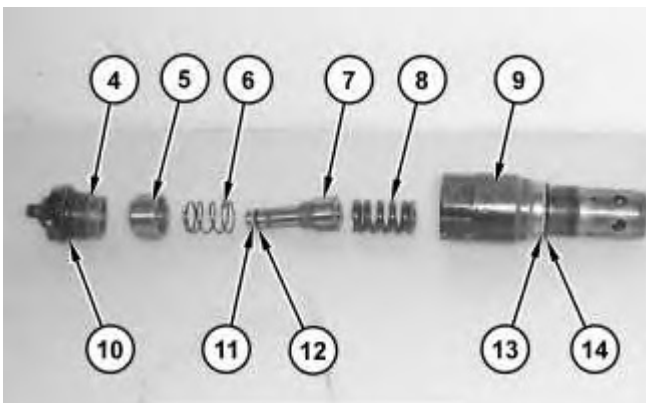


Illustration 4

g01283049

Thank you so much for reading.
Please click the “Buy Now!”
button below to download the
complete manual.



After you pay.

You can download the most
perfect and complete manual in
the world immediately.

Our support email:

ebooklibonline@outlook.com