

Model T6 Tractor Spreader

Operators Manual

DD-1469

Reprinted



5-146

Operator's Instruction Manual

#718

CASE



TRACTOR SPREADER

MODEL T6

Reference Library
DO NOT REMOVE
Service & Educational Dept.

Fifth Edition

J. I. Case Co.
 RACINE, WISCONSIN - U.S.A.



TO PURCHASERS OF CASE SPREADERS

Congratulations on your purchase of a Case Spreader and welcome to the ever-increasing number of satisfied Case Owners.

The dependability and economical performance of your new Case Spreader will prove that you were wise in making this choice.

The organization back of your spreader has been building quality farm equipment for more than a century. Your Case Spreader was built in one of the largest and best equipped plants in the world. In this factory quality materials, precision machinery, high grade workmanship, thorough inspection, and complete testing equipment are combined to give you the best in performance and economical operation.

The care which you give your spreader will have a great deal to do with the service and satisfaction you get from it. By observing the precautions and suggestions in this manual, your Case Spreader will serve you well for many years. Make this manual your guide. Should you need information not covered here, or should your spreader require special servicing, contact your Case Dealer. He has trained men who are kept informed on the best methods of servicing Case Farming Equipment in the field or in his shop.

When it becomes necessary, after long use, to replace certain parts on your spreader, be sure to use only genuine Case Parts, thus insuring proper fit and continuous good service. These may be obtained from your Case Dealer. It is always helpful to provide him with the Model of your spreader in addition to a description and part number, if available, of the parts required.

INTRODUCTION

The Case Model T-6 Manure Spreader is especially designed in size, capacity, weight, and maneuverability to handle the daily manure hauling and spreading requirements of the average size farm.

Some of the outstanding advantages of the Model T-6 Spreader are as follows:

Convenient Size

The seventy bushel load capacity of the T-6 Spreader is just right for the average size farming operation. A spreader of this size and weight is easily maneuvered in barns and feeding lots. It can be pulled with any tractor of small to medium power rating.

Self-Raising Hitch

For easy loading, the front of the box can be lowered and when filled can be raised to the transport position without a jack or heavy lifting.

Many farmers equip their tractor with a power loader and use the same tractor to pull and load the spreader. The Self-Raising Hitch means that the tractor can be hooked to the spreader without effort after the spreader has been loaded.

Convenient Controls

Two Control Levers (one for engaging and disengaging the unloading drive, and one for regulating the rate of discharge) are conveniently located so that they can be operated by the tractor driver.

Construction Features

The Axle and all Cross Shafts rotate on roller bearings for longer service life. The Axle is also supported by a roller bearing in the center to prevent sag under heavy loads.

Each board in the specially seasoned and treated wood floor is double bolted to prevent warpage.

The Box is wider at the rear than at the front for easy movement of the load to the Beaters and the Widespread.

The chisel point Beater Teeth are mounted in spirals for thorough shredding.

All of these construction features combine to provide a uniform controlled rate of spreading and a long service life with minimum upkeep costs.

Extra equipment for the spreader includes, Lime Spreader Attachment — Tongue Truck—Neckyoke—Eveners—and Adjustable End Gate.

TABLE OF CONTENTS

	Page No.
GENERAL SPECIFICATIONS.....	5
SETTING UP INSTRUCTIONS.....	7
LUBRICATION.....	25
ADJUSTING INSTRUCTIONS.....	26
FIELD OPERATION.....	28
GENERAL MAINTENANCE.....	30
EXTRA AND OPTIONAL EQUIPMENT.....	33

GENERAL SPECIFICATIONS

Loaded Capacity	70 Bushels
Weight (empty)	1357 lbs.
Length of Spreader	17 feet
Loading height at front of box	31 inches
Hitch	Automatic Self-Raising
Rate of Spreading	5, 10, 15 or 20 Bushels per acre
Construction	Steel Body with Long Life Wood Bottom
Size of Tires	7:50 x 18—4 ply Traction Tires
Axle Bearings	5 Roller Bearings
Apron Drive	Ratchet
Beater Drive	Chain
Beater Assembly	Needle Bearing Mounted

SHIPPING BUNDLES

Bottom	Widespread
Main Side—R.H.	Drive Sprocket
Main Side—L.H.	Upper Beater
Tractor Hitch	Lower Beater
Axle	Chain Shields
Shield and Endgate	Apron
Box of Parts	Wheel Hub—(2)
Control Levers	Wheels—(2)
Tires and Tubes—(2)	

OPTIONAL AND EXTRA EQUIPMENT

Spreader can be ordered less tires and tubes	Lime Spreader Attachment
Tongue Truck	Adjustable Rear Endgate
Eveners	Neckyoke
Set of 20 inch Wheels and Hubs for 20 inch truck, bus or implement tires (Special set of Hubs for 20 inch Dodge, Ford or Chevrolet truck wheels)	

PREVENT ACCIDENTS

When operating tractors or self-propelled farm machines, or when trailing a farm machine or implement over a public thoroughfare after dark — —

- 1. Be sure the unit is equipped with headlights and that they are adjusted for highway use.**
- 2. Place suitable red lights and reflectors on the rear and sides of the unit so that its outline is well defined.**
- 3. COMPLY WITH YOUR STATE AND LOCAL LAWS GOVERNING LIGHTING REGULATIONS AND MAXIMUM WIDTH REGULATIONS.**

SETTING UP INSTRUCTIONS

GENERAL ASSEMBLY INFORMATION

This manual has been prepared as an aid to the dealer in setting up and for the operator to acquaint himself with the adjustment and operation of the Model T 6 Spreader.

It is important that a new spreader be properly assembled and adjusted to assure satisfactory field operation.

When assembling this spreader, take the time to clean, oil, and grease all bearings and working parts. If they are tight from paint, scrape off the paint or use paint remover; then oil and work by hand until the parts move freely.

To set up the spreader, place all bundles where they will be handy, cut all wires, and arrange the loose parts so they can be readily seen.

The terms **Right** and **Left** hand when used in this manual, apply when facing in the direction the machine will move in forward operation.

The dark or shaded portions of the pictures show the parts to be assembled. The numbers, letters, symbols, and arrows are used to show the proper order, how, and where the parts are to be attached.

The bolts, cotter pins, etc. are ordinarily used in the holes in which they are found or where the instructions and pictures locate them.

When attaching a part with two or more bolts or screws, do not tighten until all bolts are in place. Then tighten all bolts or screws evenly.

IMPORTANT: This manual should be handed to the owner or operator when the spreader is delivered. It should be referred to when giving any operating instructions.

REGARDLESS OF THE CARE USED in the design and construction of farm equipment, there are many points that cannot be completely safeguarded without interfering with accessibility and efficient operation.

—National Safety Council.

PREPARING FOR ASSEMBLY OF SIDES

Place the bottom assembly on blocks about 2 feet high. Remove the apron tightener brackets from front end of bottom. See Figure 4. Remove the outside bottom boards (one on each side). These are removed to provide room for heads of bolts when assembling sides. Remove all of the bolts from the side angles in the bottom and arrange them so they can be replaced in their original location when putting on sides.

LEFT HAND SIDE ASSEMBLY

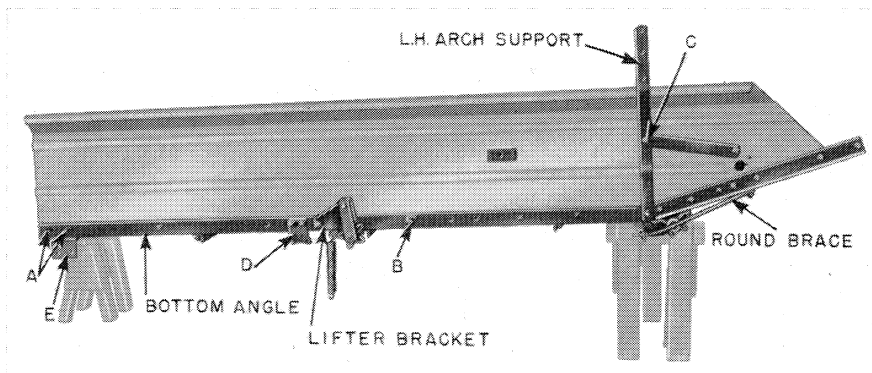


Figure 1. Main Side-Left Hand

Attach the left hand side to inner edge of bottom angle with five bolts. The angle extension on the rear of side overlaps the bottom angle. Do not tighten bolts in conveyor guide until later.

Attach the chain lifter bracket to side and bottom angle with two bolts.

Remove nut from bolt (C) in brace on side. Attach the left hand arch and upper beater support to side and bottom with two bolts having brace on bolt, under support. Left hand support can be identified by matching with hole (C) in side.

Insert the bolts (A) for conveyor tightener bracket and (B) chain lifter cam through side and bottom side angle, but do not put nuts on conveyor tightener bolts. Be sure to replace the steel spacer and cast stud on the chain lifter cam bolt.

Attach round brace to inner hole of cross angle and to side angle having one nut on each side of cross angle. Adjust the nuts on this rod to straighten up the side and then lock brace in place. **NOTE:** See operation under Figure 10 or adjusting the brace.

Buy Now



Our support email:

ebooklibonline@outlook.com