

FORD

RIDING MOWER TRACTOR

**MODELS: 09GN-2051/2052/2053
40205130**

REPAIR MANUAL

Reprinted

TABLE OF CONTENTS

RIDER MOWER TRACTORS R8 & R11 (Model 09GN-2051/2052/2053)	PAGE
INTRODUCTION AND SAFETY	1
LUBRICATION AND MAINTENANCE	2
ADJUSTMENT AND SERVICING	
Engine	3
Mower Deck	
Mower Deck Removal And Replacement	4
Blade Removal And Replacement	5
Blade Sharpening And Balancing	6
Mower Spindle Removal And Replacement	6
Mower Drive Brake Adjustment	7
Belts	
Mower Drive Belt Adjustment	8
Mower Drive Belt Replacement	9
Traction Drive Belt Adjustment	9
Traction Drive Belt Replacement	9
Traction Drive Brake	
Brake Adjustment	10
Brake Pad Replacement	11
Traction Drive Chain	
Chain Adjustment	12
Chain Replacement	12
Differential Removal And Replacement	13
Transmission Removal And Replacement	13
Transmission Shift Linkage Adjustment	14
Throttle Control Removal And Replacement	15
Electrical System	
System Functions	16
Battery	17
Solenoid	17
Ignition Switch	18
Interlock Switch System Check	19
Fuse	21
Wiring Diagram	22
Electric Start System	22
Recoil Start System	23
TROUBLE-SHOOTING	24
BOLT TORQUE SPECIFICATIONS	26

IMPORTANT: The replacement of any part on this product by other than the manufacturer's authorized replacement part may adversely affect the performance, durability or safety of this product.

The manufacturer reserves the right to make changes on and to add improvements upon its products at any time without notice or obligation. The manufacturer also reserves the right to discontinue manufacture of any product at its discretion at any time.

Notice to Serviceman in the State of California — The engine on this unit is NOT equipped with a spark arresting muffler.

IMPORTANT: USE OR OPERATION OF THIS ENGINE ON ANY FOREST COVERED, BRUSH COVERED, OR GRASS COVERED LAND WITHOUT A STATE APPROVED SPARK ARRESTOR IN EFFECTIVE WORKING ORDER CONSTITUTES A VIOLATION OF THE LAW OF THE STATE OF CALIFORNIA.

REAR ENGINE RIDER

INTRODUCTION

This manual contains service and maintenance instructions for Rear Engine Riders. It has been prepared to provide the information the serviceman needs to correctly service and maintain a rear engine rider. All sections of this manual should be carefully studied by the serviceman before beginning to work on the rider.

ALL WARNINGS used throughout this manual should be heeded and followed very closely. Failure to obey these rules could result in personal injury or death to yourself or others.

All references made to the left side, right side, front and rear are given from the operator's position.

SAFETY



Safety is No Accident Be Alert!

This symbol is used to attract your attention to the safety precautions that should be understood by the servicemen to avoid accidents.

Please read and follow these instructions on safety procedures before servicing the rider.

PERSONAL CONSIDERATIONS

1. Never let shop rags, used for cleaning, lay around to become fire hazards.
2. Always use safety glasses when servicing or inspecting the rider.
3. Do not wear loose fitting clothing that might get caught in moving parts. Also, keep hands and feet away from moving parts.
4. Be certain that the work bench or support being used is strong enough. The weight of the part plus the force applied to it during assembly or disassembly may put a great strain on the bench or support.
5. Use jack stands or blocks to hold up the unit in any potentially dangerous positions required for access. Do not rely only on jack for support.


EQUIPMENT CONSIDERATIONS

1. Always disconnect spark plug wire and secure away from spark plug. This **must** be performed every time any servicing is done and will prevent accidental starting of engine.
2. Always store gasoline or flammable solvents used for cleaning in closed containers specifically designed for that purpose.
3. Before cleaning, servicing or inspecting rider, make certain all moving parts have stopped and engine and exhaust assemblies have cooled down.

4. Never operate rider without proper guards, plates or other safety protective devices in place.
5. Never store rider with gasoline in the tank inside a building where fumes may reach an open flame or spark. Allow engine to cool before storing in any enclosure.
6. Disengage power to attachment(s) and stop engine before servicing, repairing or making any adjustments.
7. Disengage power to attachment(s) when transporting or not in use.
8. Take all possible precautions when leaving the vehicle unattended, such as disengaging the power-take-off, lowering the attachment, shifting into neutral, setting the parking brake, stopping the engine and removing the key.
9. Do not change governor setting or over speed the engine.
10. Be certain that any part being removed is properly supported or held to prevent injury or damage.

OPERATIONAL CONSIDERATIONS

1. Do not start or run the engine indoors. Fumes from engine exhaust can kill.
2. Disengage all clutches and place gear shift lever in neutral before attempting to start engine.
3. Be sure that all parts are securely fastened before starting rider.
4. Be sure all tools and cleaning materials are removed before starting rider.
5. If the equipment should start to vibrate abnormally, stop engine and check immediately for the cause. Vibration is generally a warning of trouble.
6. If test running is required, make sure you are thoroughly familiar with the complete operation of the rider. Know how to stop the rider.
7. Never operate machine at high transport speeds on slippery surfaces. Use care when backing.
8. Never operate without good visibility or light.

Whenever you see this symbol  it means:
ATTENTION! BECOME ALERT! YOUR SAFETY IS INVOLVED!

IDENTIFICATION PLATE LOCATION:

The rear engine rider model and serial number identification plate is located on left side of main frame just behind mower deck lift lever. (Fig. 1)

Refer to engine manufacturer's engine literature for location of engine model and serial number.

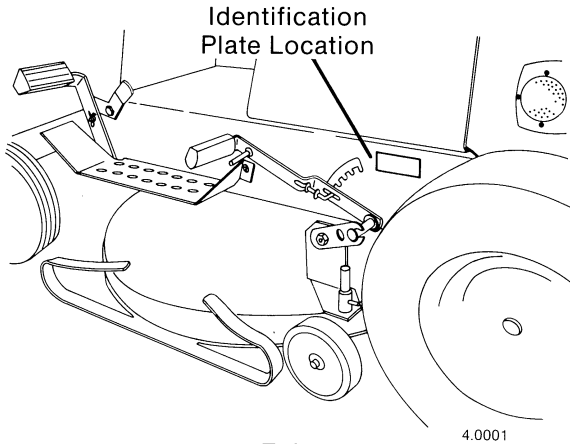


FIG. 1

LUBRICATION AND MAINTENANCE

LUBRICATION:

1. Engine - Check engine oil level before each engine operation. Change engine oil every 25 operating hours. Consult engine manufacturer's service manual for all lubrication and maintenance specifications.
2. Front Wheels - Grease with NLGI Grade 2 Lithium base EP grease (Ford 1T-M1C137-B), every 25 operating hours. (Fig. 2)

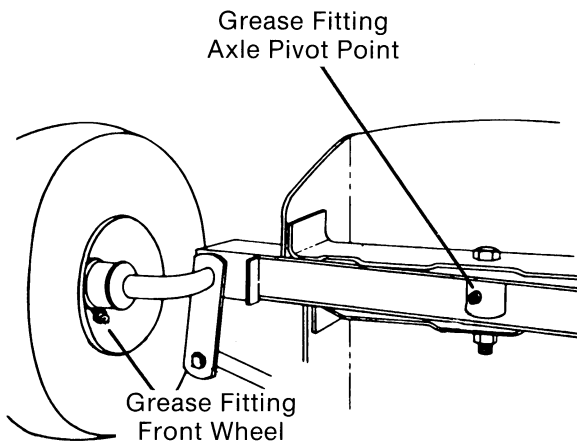


FIG. 2

RE1016

3. Front Axle Pivot Point - Grease with NLGI Grade 2 Lithium base EP grease (Ford 1T-M1C137-B), every 25 operating hours. (Fig. 2)
4. Mower Deck Gauge Wheels - Oil shaft liberally, turning wheels to work oil in every 25 operating hours with SAE 30 oil. (Fig. 3)

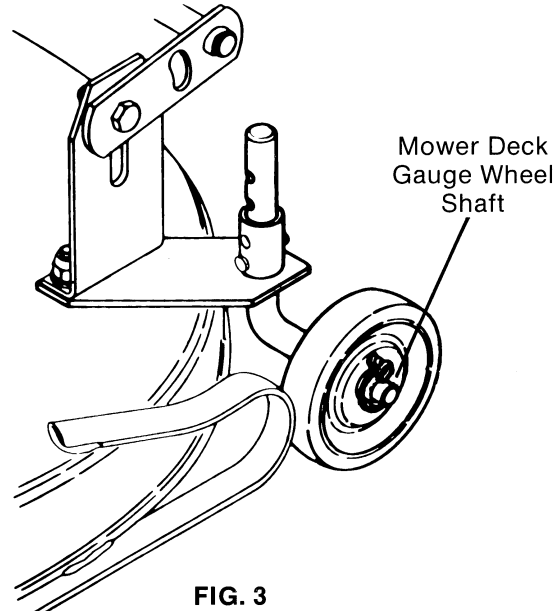


FIG. 3

5. All Other Pivot Points - Clean all pivot points and linkages and oil with SAE 30 oil every 25 operating hours.
6. Transmission and Differential - The transmission and differential are filled for life and should not require additional lubrication. Make periodic visual inspections for damage or leaks every 100 operating hours. If damage or leaks occur, consult transmission or differential manufacturer's service manual for proper lubrication and maintenance specifications. (transmission lubricant type - E.P. Lithium Grease, 12 ounces).

MAINTENANCE:

1. General - Make a visual inspection for loose or damaged parts. Damaged parts should be repaired or replaced.
2. Battery - Terminals should be tight and free of corrosion. Retainer rod should be snug over battery. Top of battery should be clean and dry. Check level of electrolyte. Add clean distilled water as needed.
3. Belts - Inspect for cracking, excessive wear and for proper tension. Refer to "ADJUSTMENTS AND SERVICING" section.
4. Tire Pressures - Recommended pressure for both front and rear tires is 14 p.s.i.

ADJUSTMENT AND SERVICING

ENGINE:

1. Refer to Engine Manufacturer's Service Manual for all adjustments and servicing information.
2. Maximum engine RPM high speed operation no load range is 3400 RPM to 3600 RPM.

3. Engine Removal —

WARNING: To avoid accidental starting, remove spark plug wire and secure away from spark plug.

- A. Set parking brake and drain gas from fuel tank if tank is more than half full.
- B. Turn ignition key "OFF". Remove battery retainer rod from battery and slide battery forward.

WARNING: To avoid burns, be careful not to short the positive (+) terminal of battery to the rider when removing from mounting.

- C. Disconnect both battery cables from battery. Disconnect negative (-) terminal first. Remove battery from rider.
- D. Disconnect throttle cable at engine, by loosening throttle cable clamp screw enough so that cable can be removed. Disconnect cable end from throttle speed control block. (Fig. 4)

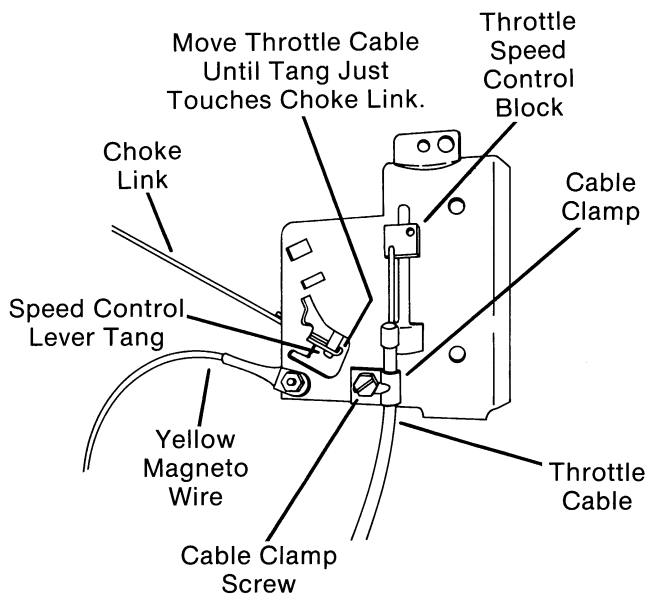


FIG. 4

- E. Disconnect yellow wire to magneto at left rear corner of engine next to throttle cable clamp screw. (Fig. 4)

- F. (Electric start only) Disconnect red starter wire and red alternator wire at connector at right rear corner of engine. (Fig. 5)

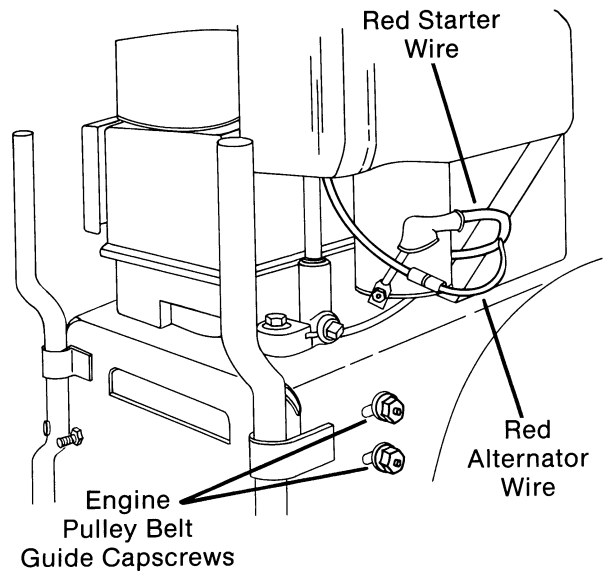


FIG. 5

WARNING: To avoid personal injury when raising or lowering the rear engine rider, make sure you are capable of handling the weight. When in doubt get assistance.

- G. Raise front of rider up and stand on rear support bars. (Fig. 6)

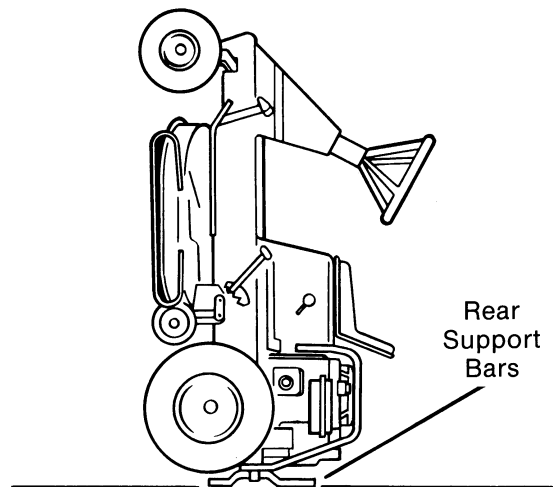


FIG. 6

- H. Remove carriage bolts, washers and locknuts securing engine pulley belt guide and remove belt guide. (Fig. 5)
- I. With mower drive lever disengaged, remove drive belt from engine pulley.

Thank you so much for reading.
Please click the “Buy Now!”
button below to download the
complete manual.



After you pay.

You can download the most
perfect and complete manual in
the world immediately.

Our support email:

ebooklibonline@outlook.com