

LEXION 770 - 620

Operator's Manual

Genuine Operator's Manual!

Validity of Operator's manual

This manual applies to the machine / front attachment:

Designation	Type	Serial number	
		From	To
LEXION 770 TERRA TRAC / 770	C59	C59 00011	–
LEXION 760 TERRA TRAC / 760	C56	C56 00011	–
LEXION 750 TERRA TRAC / 750 / 740	C55	C55 00011	–
LEXION 670 TERRA TRAC / 670 / 660 / 650 / 640	C54	C54 00011	–
LEXION 630 / 620	C53	C53 00011	–
LEXION 630 MONTANA	C52	C52 00011	–
LEXION 750 MONTANA	C51	C51 00011	–
LEXION 670 MONTANA	C50	C50 00011	–

Technical data

Technical specifications, dimensions and weights are non-binding. Changes reflecting the technical development and errors reserved.

Road traffic

The provisions of road traffic regulations in the various countries may differ. In case of discrepancies between the instructions provided by the manufacturer and the traffic regulations of the relevant countries, the traffic regulations of the countries concerned apply.

The information below primarily refers to the Federal Republic of Germany.

This self-propelled machine usually requires an operating permit and an exceptional approval for driving on public roads.

When travelling on public roads and lanes with this self-propelled machine, all conditions imposed in the operating permit and the exceptional approval must be met.

Documents to be carried on the machine

Besides the driver's licence, the driver must permanently carry the original of the operating permit and of the exceptional approval.

Objects to be carried on the machine

A warning triangle must be carried on all self-propelled machines.

A warning triangle, a warning light and a first-aid box must be carried on all commercially used machines.

In addition, at least one wheel chock must be carried on all motor vehicles above 4 t of admissible gross weight.

CLAAS self-propelled machines are usually equipped with 1 rigid or 2 folding wheel chocks. These may be used on the front wheels only.

Excess-width machines

In case of excess-width self-propelled machines (width exceeding 3 m across tyres), an individual operating permit based on a specific certificate, an exceptional approval according to § 70, section 1 of German Regulations Authorizing the Use of Vehicles for Road Traffic and the exceptional permit according to § 29 of the German Road Traffic Regulations must be carried.

All conditions imposed there must be met and all information observed. Especially the information regarding the marking of excess-width road vehicles must be followed. (two red/white striped warning plates each at the front and the rear, two yellow warning beacons).

The granting of the exceptional approval and the exceptional permit follows different rules in the various Federal States. Information can usually be obtained from the road traffic departments in charge.

Additional weights

Self-propelled machines with a rear steering axle and with front attachments fitted that are approved by CLAAS must be equipped with additional weights acting on the rear axle when driving on public roads.

This is required to ensure that the machine will not lift off at the rear and remain steerable when braking and travelling on slopes.

The required additional weights can be implements, rear-axle weights and liquid filling of the rear axle wheels.

Depending on the type of front attachment and the components fitted on the machine, additional weights must be added at the rear of the self-propelled machines.

Specific relevant information and tables can be requested from CLAAS.

Changes on the machine

When subsequently modifying machine parts whose condition is prescribed or fitting parts that may cause a hazard to other road users when in operation, the operating permit (individual operating permit) and the exceptional approval shall cease to be valid.

Obtaining a new individual operating permit requires that the machine be presented to the technical inspection agency in charge (TUEV, DEKRA) in order to prepare a specific certificate according to 19 of Regulations Authorizing the Use of Vehicles for Road Traffic.

If in doubt whether this is the case, please contact CLAAS as the manufacturer.

Carrying a transport trailer

A transport carriage for front attachments may be carried only when not exceeding the permitted trailing capacity.

When trailing a transport carriage behind the machine, the lighting cable must be connected and the proper condition of the entire lighting equipment must be checked.

Moreover, proper locking of the trailer drawbar must specifically be ensured.

Carrying other trailers in the trailer hitch is **not** allowed to self-propelled combine-harvesters when travelling on public roads.

Registration

All CLAAS self-propelled machines must be marked with 3 top speed decals at the longitudinal sides and at the rear according to § 58 of the Regulations Authorizing the Use of Vehicles for Road Traffic.

As a self-propelled machine with an allowed top speed of **up to 20 km/h**, this machine is subject only to the obligation of having an operating permit. An official number plate is not required.

According to § 4 FZV, however, the first name and the last name as well as the place of residence (company and headquarters) of the keeper must be provided permanently and clearly legible on the left side of the machine.

As a self-propelled machine with an allowed top speed of **more than 20 km/h**, this machine is subject to the obligation of having an operating permit and registration plates fitted.

The obligation of having registration plates fitted is also involves regularly recurring vehicle inspections by a technical inspection agency (TUEV, DEKRA).

Warning beacons

When travelling on public roads and lanes, the yellow warning beacons may be switched on **only** if this is explicitly prescribed in the individual operating permit or in the exceptional approval (e.g. in case of excess width).

Work lights

The work lights must absolutely be switched off when travelling on public roads and lanes.

Folding front attachments

The subsequent fitting of folding front attachments will void the individual operating permit of the machine and the exceptional approval.

Obtaining a new individual operating permit requires that the machine be presented to the technical inspection agency in charge (TUEV, DEKRA) in order to prepare a specific certificate according to 19 of Regulations Authorizing the Use of Vehicles for Road Traffic.

A new individual operating permit must be applied for with the administration authority in charge (registration office) after submitting a new specific certificate and the exceptional approval.

To make the process for obtaining the specific certificate easier for the technical inspection agency, CLAAS can issue a sample certificate while stating the machine type, the serial no. and the year of construction.

Especially the required weight increase on the rear axle must be observed so that the machine will not lift off when braking and remains steerable.

If the required additional weights are missing, the technical inspection agency will usually not issue a specific certificate.

If the machine is a new CLAAS self-propelled machine with a folding front attachment fitted and acceptance has been carried out by the technical inspection agency in the works, the above shall not apply.

Hints regarding the diesel engine

NOTICE

Operation of diesel engine under unsuitable operating conditions.

Increased fuel consumption.

Increased diesel engine wear.

- ▶ Do not let the diesel engine warm up at idle speed.
 - ▶ Stop the diesel engine during operational waiting times.
 - ▶ Check fuel consumption at regular intervals.
 - ▶ Carry out the specified maintenance work at regular intervals.
-

Hint regarding the electronic engine management

Modern, powerful diesel engines such as those used in CLAAS machines are equipped with an electronic engine management. The engines as well as the electronic engine management are optimally matched to the machine in question and the legal requirements in force regarding the emission of noise and pollutants.

Every intervention into the engine management programmed by the manufacturer results in adverse changes of the factory-set and optimum interplay of engine and machine and in failure to comply with both legal requirements regarding environmental properties and road traffic licensing regulations.

Any subsequent intervention into the electronic engine management will usually void the Operating permit and using the machine on public roads will be prohibited. A fine may be imposed to the owner/user of a machine that has been subsequently fiddled with.

Fiddling with the electronic engine management may result in an increased risk from an insurance law point of view, and consequently in loss of insurance cover in comprehensive and liability insurance.

The manufacturer's warranty shall be excluded in case of damage to the machine caused by subsequent interventions. In case the machine was financed, rented or leased, the forbidden intervention into the engine management may constitute a violation of the contract and may cause liability for damages.

CLAAS expressly dissociates from subsequent interventions into the electronic engine management of CLAAS machines and urgently advises sales partners and end customers not to carry out such interventions. If sales partners participate in such interventions, they may be liable for damage to the machine and any consequential damage.

Spare parts and technical questions

Please quote the respective identification numbers when ordering spare parts or making technical enquiries.

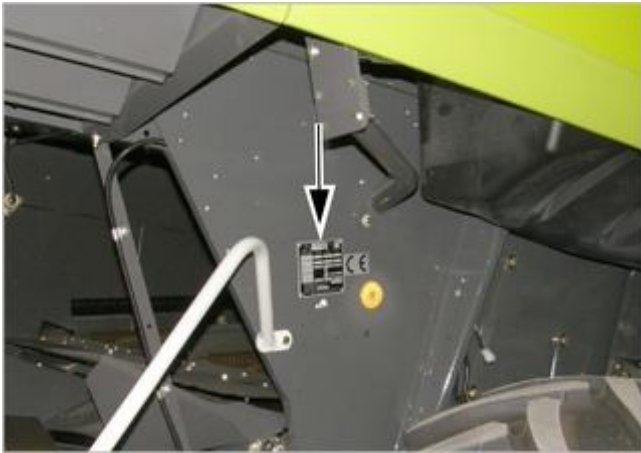
- Machine
- Front attachment
- Engine
- Assembly group
and / or
- Software version / versions

This is necessary because otherwise incorrect spare parts may be delivered.

The identification number can be found on the respective identification plate.

The identification number / numbers of software can be found in the respective menu.

Machine identification plate



The identification plate is fitted on the right machine side above the rear axle.

Wheel machines identification plate

♻

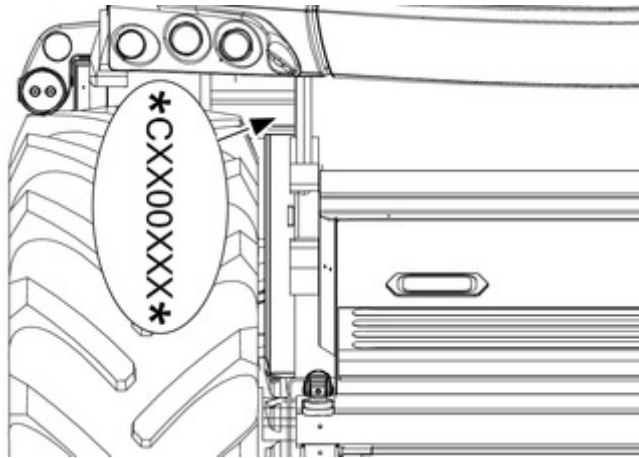
Wheel machines	
	Designation
1	Option
2	Admissible gross weight
3	Type
4	Identification number (serial number)
5	Authorized front axle load
6	Year of construction
7	Rated output of engine (kW)
8	Admissible rear axle load

Identification plate of TERRA TRAC machines

2 Typ
 3 Ident Nr.:
 4
 5 Bauj. kW
 6
 7
 8
 1 Ausführungen vorn u hinten
 zul Ges Gewicht kg
 zul Lautrollenlast kg
 zul Achslast hinten kg
 kg kg kg
 kg kg kg
 CLAAS Selbstfahrende Erntemaschinen GmbH
 33428 Harsumwinkel, Made in Germany

p

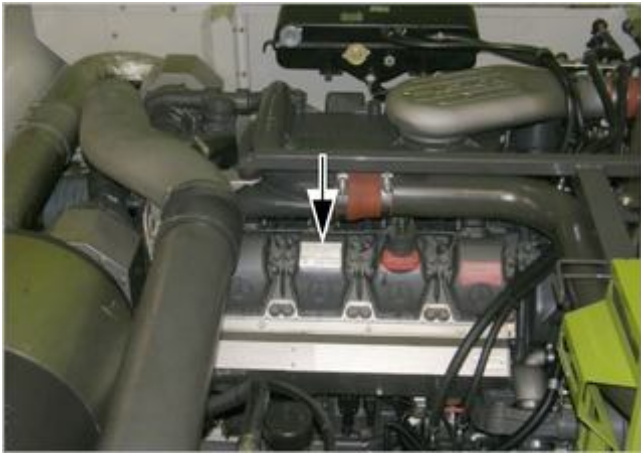
TERRA TRAC machines	
	Designation
1	Option
2	Permissible total weight
3	Type
4	Identification no. (serial number)
5	Permissible load on guide roller
6	Year of construction
7	Rated output of engine (kW)
8	Maximum permissible rear axle load



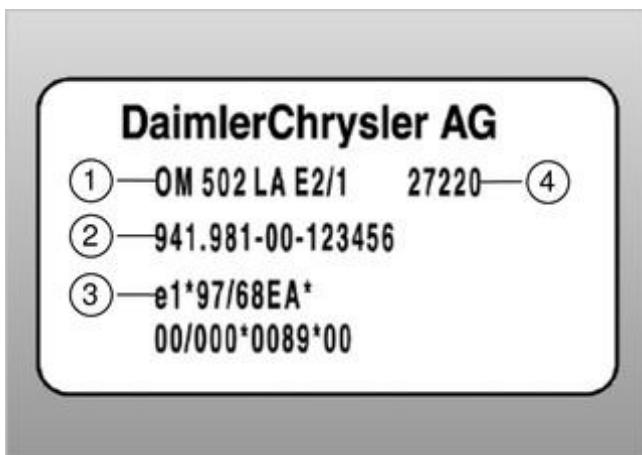
p

In addition, the identification number of the machine is punched into the frame beneath the operator's platform on the right machine side.

Engine identification plates of Mercedes-Benz OM 502 LA



The identification plate is located on the front of the diesel engine.



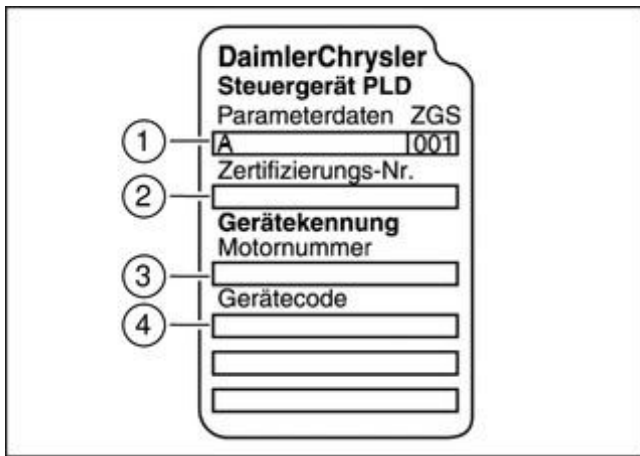
In addition to the manufacturer's information, the following data are provided:

	Designation
1	Engine type designation
2	Engine serial number
3	Approval number
4	Engine family



Control unit identification plate

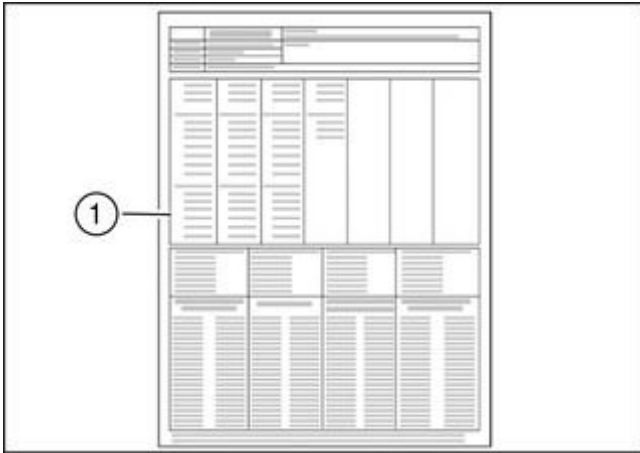
The identification plate with the identification number is fitted at the bottom on the engine block.



In addition to the manufacturer's information, the following data are provided:

	Designation
1	Data record
2	Certification
3	Engine serial number
4	Unit code

Engine data card



Example:

Type designation OM 502 L A

	Designation
OM	Diesel engine
502	Engine type
L	Charge air cooling
A	Turbocharger

The engine data card (1) (DIN A4 sheet) is part of the engine documentation and should always be kept together with the Operator's Manual. It contains information about the design status of the engine including the special versions.

When procuring genuine spare parts, submitting the engine data card is absolutely necessary.

The engine data card describes the shipping package ex Mercedes-Benz works. Changes of the shipping package carried out at a later date are not recorded in the data card.

Identification plate of CATERPILLAR C-13 engine



The identification plate is located on the front of the diesel engine.

Thank you so much for reading.
Please click the “Buy Now!”
button below to download the
complete manual.



After you pay.

You can download the most
perfect and complete manual in
the world immediately.

Our support email:

ebooklibonline@outlook.com