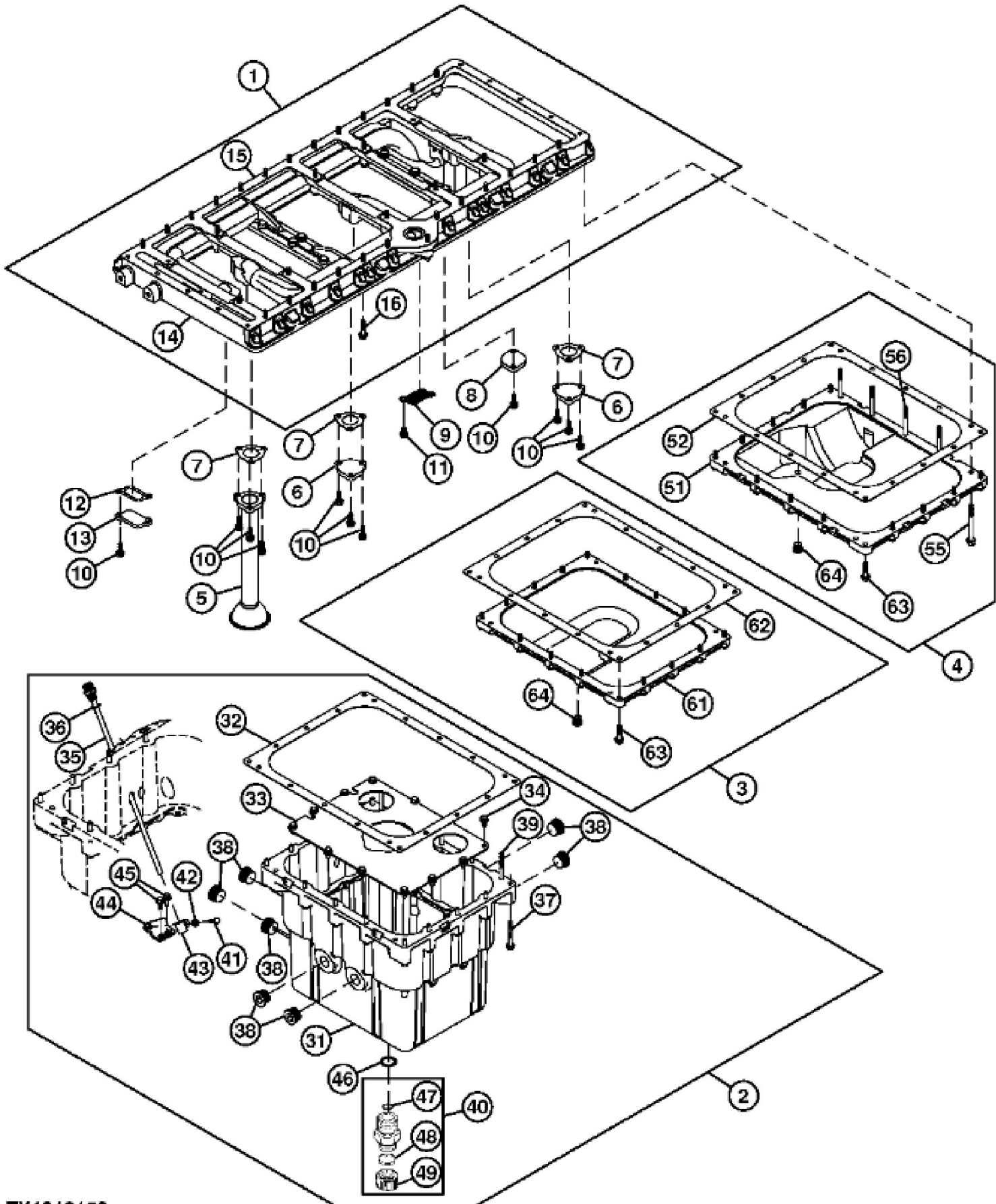


John Deere > Construction And Forestry >DOZER, CRAWLER >1050J - DOZER, CRAWLER >1050J Crawler >04 ENGINE >0404 CYLINDER BLOCK >ST30108 - ENGINE CYLINDER BLOCK AND MAIN BEARING CAPS

KEY	PART NO.	PART NAME	QTY	REMARKS
1	LW10116162	SHORT BLOCK ASSEMBLY	1	
2	AT276882	PLUG	5	
3	AT274036	PLUG	12	
4	AT314883	SELF-LOCKING SCREW	2	
5	LW7382203	PIPE PLUG	6	
6	AT266609	PLUG	2	
7	PMH3085	SELF-LOCKING SCREW	2	SUB FOR LW7362698
7	PMH3831	FITTING	1	
9	LW9074798	PIN FASTENER	12	
16	LW10011832	VALVE	1	
17	AT279935	SEALING RING	1	
20	LW9073745	BUSHING	7	
25	AT275334	BOLT	14	
26	AT275341	SPACER	14	
31	LW10147409	COVER	1	SUB FOR LW10147269, LW9078880 AND LW9076564
32	LW7381361	O-RING	2	
36	19M9448	SCREW	2	M10 X 20

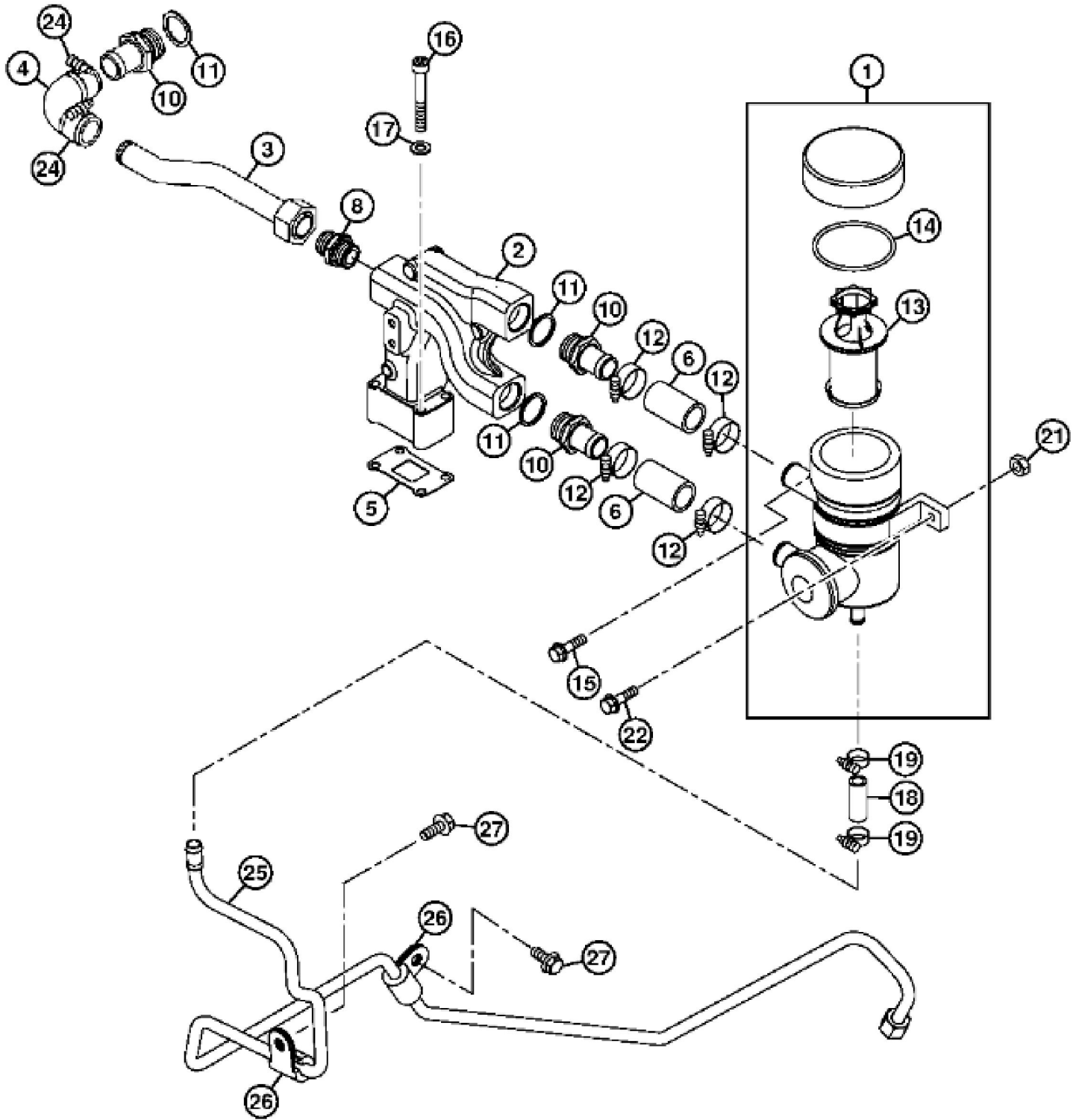


TX1016153

John Deere > Construction And Forestry >DOZER, CRAWLER >1050J - DOZER, CRAWLER >1050J Crawler >04 ENGINE >0407 ENGINE OILING SYSTEM >ST30109 - ENGINE OIL PAN, DIPSTICK AND TUBE, AND OIL PAN DRAIN VALVE

KEY	PART NO.	PART NAME	QTY	REMARKS
1	LW10118702	STEP	1	
2	LW9079482	OIL PAN	1	
3	LW9079491	PLATE	1	
4	LW9079958	OIL PAN	1	
5	LW10145779	OIL TUBE	1	NLA, SUB FOR LW9079128
6	LW9079122	COVER	2	
7	LW9079124	GASKET	3	
8	AT311904	COVER	1	
9	LW9079126	STRAINER	1	
10	19M9569	SCREW	13	M8 X 25
11	19M9446	SCREW	2	M8 X 12
12	LW9079125	GASKET	1	
13	LW9079123	COVER	1	
14	LW10118656	LADDER	1	
15	LW10123734	GASKET	1	SUB FOR LW10118549
16	LW10333554	SCREW	34	
31	LW10123868	OIL PAN	1	SUB FOR LW9079481
32	LW10123735	GASKET	1	SUB FOR LW9079556 AND LW10118551
33	LW9079494	PLATE	1	
34	19M9567	SCREW	12	M8 X 16, SUB FOR LW10005511
35	LW9079845	FITTING	1	
36	AT260902	RING	1	
37	19M10239	SCREW	13	M8 X 65, SUB FOR LW10100304
38	AT320741	DRAIN PLUG	7	
39	LW10017158	SCREW	5	
40	AT218506	DRAIN VALVE	1	
41	19M7923	CAP SCREW	1	M6 X 12, SUB FOR 19M6614
42	24M7088	WASHER	1	6.600 X 12 X 1.600 mm
43	AT274709	CLIP	1	
44	LW9079844	BRACKET	1	
45	19M9443	SCREW	1	M6 X 16, SUB FOR LW407350208
46	AT218825	SEALING WASHER	1	
47	R104558	O-RING	1	
48	AT218659	SEALING WASHER	1	

KEY	PART NO.	PART NAME	QTY	REMARKS	
49	AT218722	CAP	1		
51	LW10123873	PLATE	1	SUB FOR LW9079959	
52	LW10123735	GASKET	1	SUB FOR LW9079556 AND LW10118551	
55	LW10100303	CAP SCREW	5		
56	LW10017158	SCREW	1	SUB FOR LW10011260	
61	LW9079555	PLATE	1		
62	LW10123735	GASKET	1	SUB FOR LW9079556 AND LW10118551	
63	19M7897	SCREW	16	M8 X 35	
64	AT266609	PLUG	1		



TX1014282

John Deere > Construction And Forestry >DOZER, CRAWLER >1050J - DOZER, CRAWLER >1050J Crawler >04 ENGINE >0407 ENGINE OILING SYSTEM >ST30110 - ENGINE CRANKCASE BREATHER AND LINES (E.S.N.- 2006045711)

KEY	PART NO.	PART NAME	QTY	REMARKS
1	LW9075483	BREATHER	1	
2	LW9079009	HOUSING	1	
3	LW10117788	LINE	1	
4	LW10116310	HOSE	1	
5	LW9079130	GASKET	1	
6	AT275431	HOSE	2	
8	XGE22LMEDCF	FITTING	1	SUB FOR AT218841
8	PMH3831	FITTING	1	
10	LW9274720	HOSE FITTING	3	
11	LW10113731	SEAL	3	
12	AT218492	HOSE CLAMP	4	
13	LW10032835	FILTER ELEMENT	1	
14	LW10295116	O-RING	1	
15	19M9569	SCREW	1	M8 X 25
16	19M8658	SCREW	4	M8 X 60
17	24M7055	WASHER	4	8.400 X 16 X 1.600 mm, SUB FOR LW10017181
18	LW9079603	HOSE	1	
19	AT276902	HOSE CLAMP	2	
21	14M7273	NUT	1	M8
22	LW10016907	CAP SCREW	1	
24	AT274237	HOSE CLAMP	2	
25	LW9080854	LINE	1	
26	LW7382092	CLAMP	2	
27	19M9261	SCREW	2	M8 X 20

Thank you so much for reading.
Please click the “Buy Now!”
button below to download the
complete manual.



After you pay.

You can download the most
perfect and complete manual in
the world immediately.

Our support email:

ebooklibonline@outlook.com