

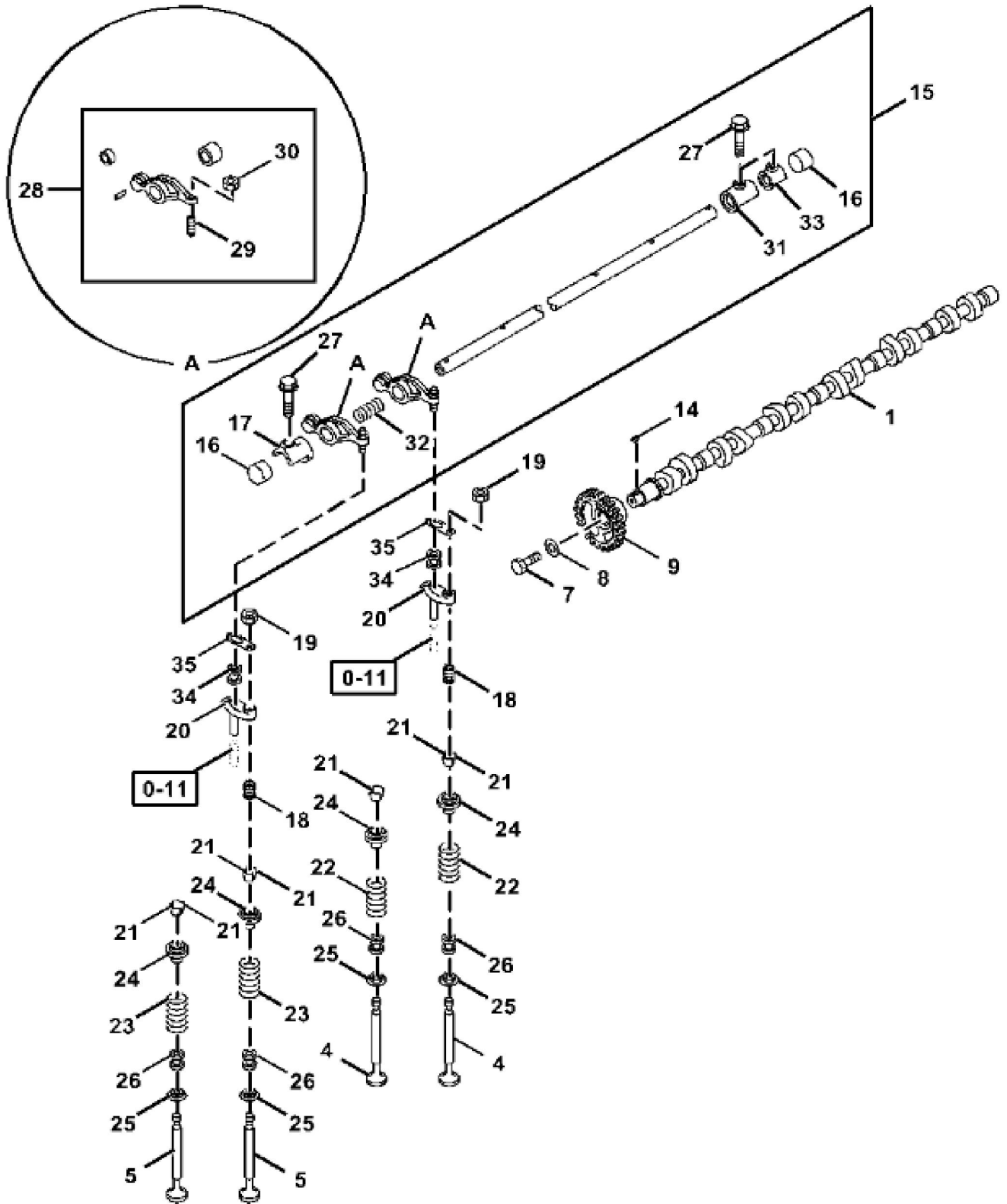
ENGINE CYLINDER BLOCK

KEY	PART NO.	PART NAME	QTY	REMARKS
1	1112106914	CYLINDER BLOCK	1	
2	1878154270	CYLINDER LINER	6	GRADE = 1X, SUB FOR 1878139880
2	1878154280	CYLINDER LINER	6	GRADE = 3X, SUB FOR 1878139890
4	1112613792	CYLINDER LINER	6	Also Included In Liner Set, OD GRADE = 1X
4	1112613802	CYLINDER LINER	6	Also Included In Liner Set, OD GRADE = 3X
5	9081510180	DOWEL PIN	2	
6	8943255061	DOWEL PIN	2	
7	1131600303	PRESSURE RELIEF VALVE	1	
8	1096232970	GASKET	1	Also Included In Gasket Set (Engine)
9	8973514510	BEARING CUP	4	
10	1096000160	PLUG	1	
11	8942416370	PLUG	13	
12	1096000651	PLUG	2	
13	9081510180	DOWEL PIN	2	
14	1133490140	BOLT	6	
15	1133421392	ORIFICE	6	
16	1096000122	PLUG	1	
17	1096000160	PLUG	4	
18	9081514280	PIN FASTENER	2	
19	8980274560	SENSOR	1	Oil
20	1090701510	BOLT	14	M18X150
21	1090700873	BOLT	28	M12X114
22	1097400681	DOWEL PIN	2	
23	1096300830	GASKET	1	Also Included In Gasket Set (Engine)
24	8982513440	GASKET	1	Also Included In Gasket Set (Engine)
25	1096300890	GASKET	1	Also Included In Gasket Set (Engine)
26	1096301410	GASKET	2	Also Included In Gasket Set (Engine)
27	1097490251	DOWEL PIN	2	
28	9081605100	PIN FASTENER	2	
29	1096301410	GASKET	1	Also Included In Gasket Set (Engine)
30	5111290030	PIPE PLUG	1	
31	1096040350	PLUG	1	M22X12
32	1096040940	PLUG	1	M10X7
33	8980470540	PLUG	1	M12X9

KEY	PART NO.	PART NAME	QTY	REMARKS	
34	8980429440	PLUG	2	M14X9	

ENGINE OIL PAN AND DIPSTICK

KEY	PART NO.	PART NAME	QTY	REMARKS
1	1113609170	OIL PAN	1	
2	1117604461	LEVEL GAUGE	1	Dipstick
3	1096300900	GASKET	1	Also Included In Gasket Set (Engine)
4	1096040220	PIPE PLUG	1	
5	8981056140	OIL TUBE	1	
6	5096230023	GASKET	2	SUB FOR 1096234690
7	0281510200	BOLT	1	M10X20
8	8980281760	BRACKET	1	
9	8980630320	GASKET	1	Also Included In Gasket Set (Engine)
10	0506408250	BOLT	34	M8X25
11	1096040980	PLUG	1	
12	8971312230	SENSOR	1	Oil Level
13	8976049160	GASKET	1	Also Included In Gasket Set (Engine), SUB FOR 1096233550
14	5113690720	SPACER	1	
15	0506406280	BOLT	3	M8X28
16	8980900130	SPACER	1	
17	1154196840	BRACKET	2	
18	0281560110	BOLT	4	M10X110
19	0280510200	BOLT	1	M10X20
20	0281510500	BOLT	4	M10X50
21	0281510350	BOLT	28	M10X35



Thank you so much for reading.
Please click the “Buy Now!”
button below to download the
complete manual.



After you pay.

You can download the most
perfect and complete manual in
the world immediately.

Our support email:

ebooklibonline@outlook.com