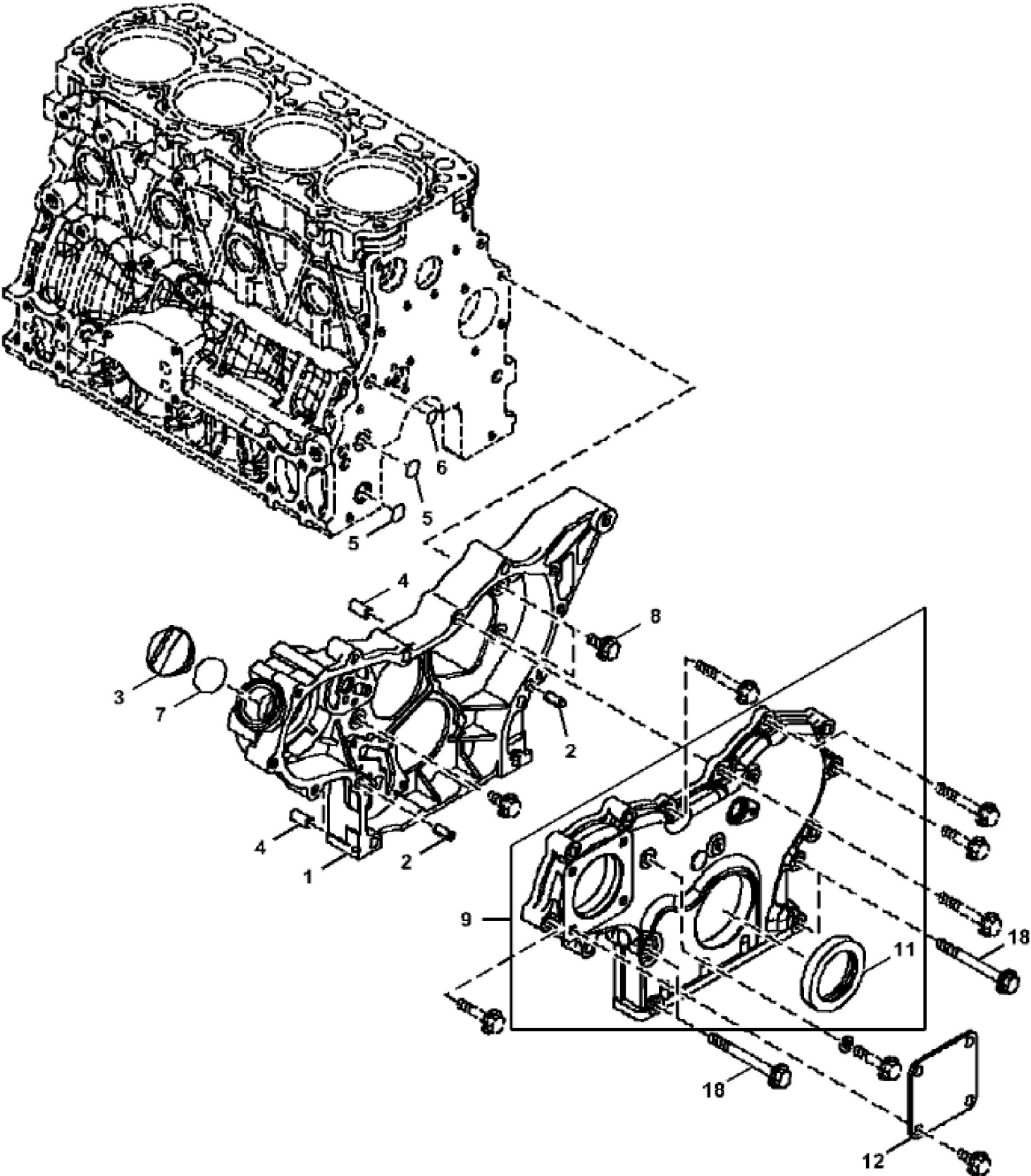


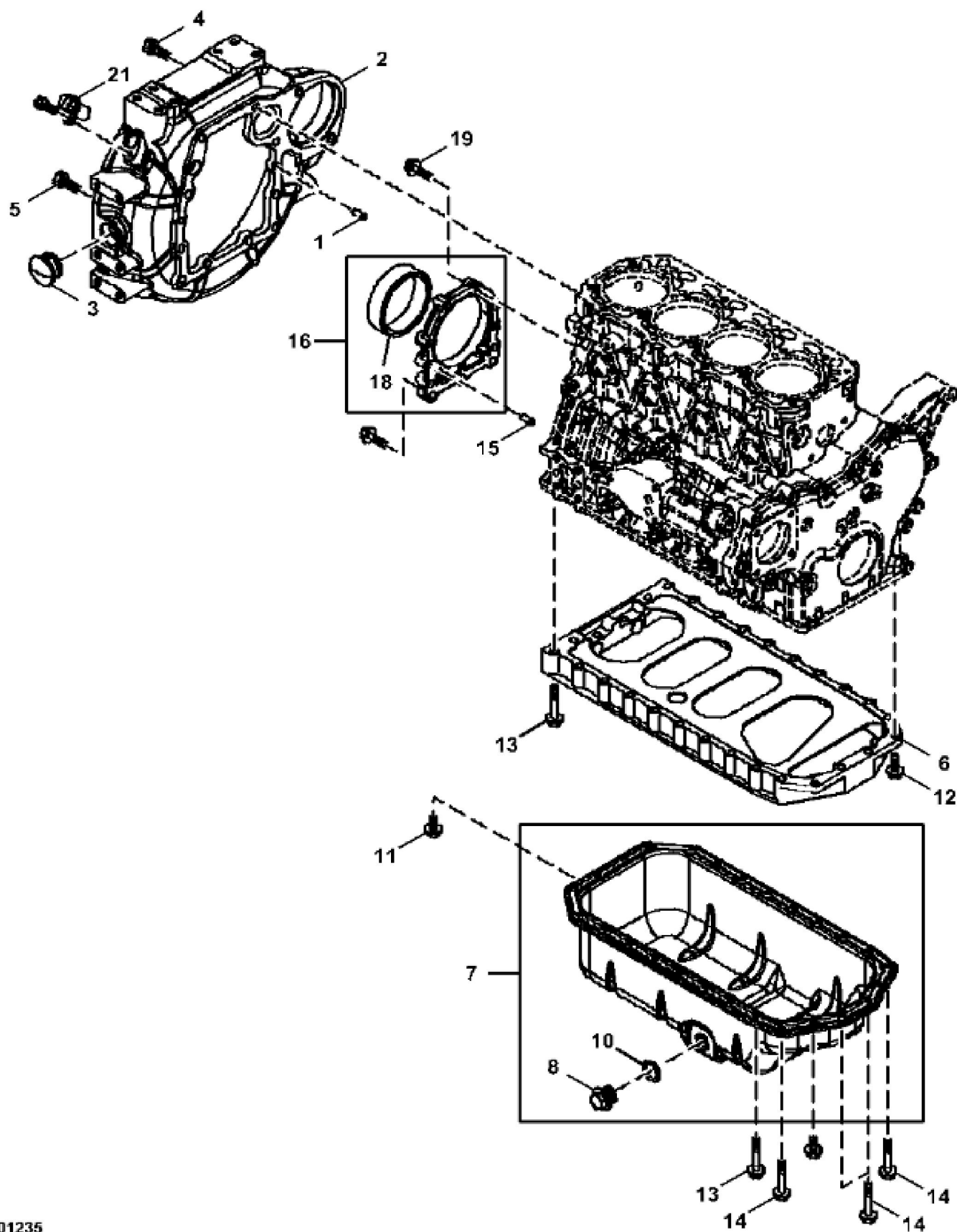
John Deere > Turf And Utility >LOADER, SKID-STEER >4TNV86CHT - LOADER, SKID-STEER >317G Compact Track Loader (PIN: 1T0317G\_\_J288093- ) >04 ENGINE AT416882 >0443 FINISH ASSEMBLY, ENGINE >ST845479 - CYLINDER BLOCK

KEY	PART NO.	PART NAME	QTY	REMARKS	
4	M809565	DRAIN PLUG	1		
6	M801189	BOLT	10		
9	MIU800573	CAMSHAFT	1		
11	CH10314	PLUG	1		
12	CH10335	PLUG	2		
13	CH10335	PLUG	1		
17	MIA880555	BEARING	2		
20	M87801	PLUG	1		
21	M801186	BOLT	18		
22	MIA882027	GASKET KIT	1		
23	MIA880554	BEARING	5		



John Deere > Turf And Utility >LOADER, SKID-STEER >4TNV86CHT - LOADER, SKID-STEER >317G Compact Track Loader (PIN: 1T0317G\_\_J288093- ) >04 ENGINE AT416882 >0443 FINISH ASSEMBLY, ENGINE >ST845458 - GEAR HOUSING

KEY	PART NO.	PART NAME	QTY	REMARKS	
1	MIU802098	GEAR CASE	1		
2	M802255	PIN	2		
3	M805710	CAP	1		
4	M800974	PIPE	2		
5	M810185	O-RING	2		
6	M809204	O-RING	1		
7	M805711	PACKING	1		
8	CH18390	BOLT	3		
9	MIA881991	COVER	1		
11	M811078	SEAL	1		
12	CH18096	COVER	1		
18	CH19136	BOLT	4		



John Deere > Turf And Utility >LOADER, SKID-STEER >4TNV86CHT - LOADER, SKID-STEER >317G Compact Track Loader (PIN: 1T0317G\_\_J288093- ) >04 ENGINE AT416882 >0443 FINISH ASSEMBLY, ENGINE >ST845457 - FLYWHEEL HOUSING AND OIL SUMP

KEY	PART NO.	PART NAME	QTY	REMARKS	
1	M802255	PIN	2		
2	MIU802741	FLYWHEEL	1		
3	M88659	PLUG	1		
4	M800077	BOLT	6		
5	M801201	BOLT	4		
6	M801207	INTERMEDIATE HOUSING	1		
7	MIA884136	OIL PAN	1		
8	M806544	DRAIN PLUG	1		
10	M806545	WASHER	1		
12	CH19085	BOLT	2		
13	CH19101	BOLT	20		
14	CH19086	BOLT	4		
15	M802255	PIN	2		
16	RG60617	CASE	1		
18	M801203	SEAL	1		
19	M808308	BOLT	6		
21	MIU802138	SENSOR	1	Flywheel Rev	

Thank you so much for reading.  
Please click the “Buy Now!”  
button below to download the  
complete manual.



After you pay.

You can download the most  
perfect and complete manual in  
the world immediately.

Our support email:

[ebooklibonline@outlook.com](mailto:ebooklibonline@outlook.com)