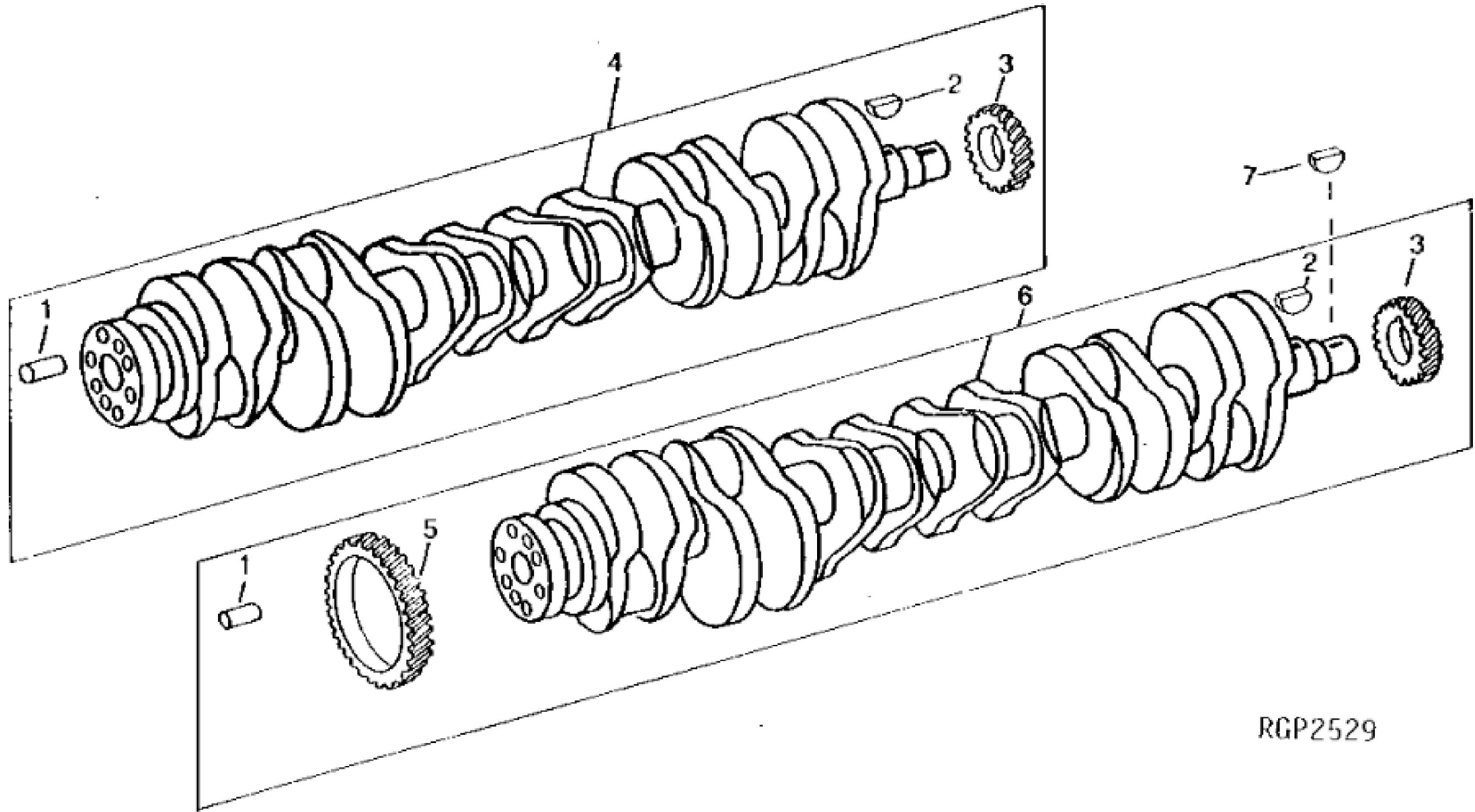


TP30368

HOSES [01C07]

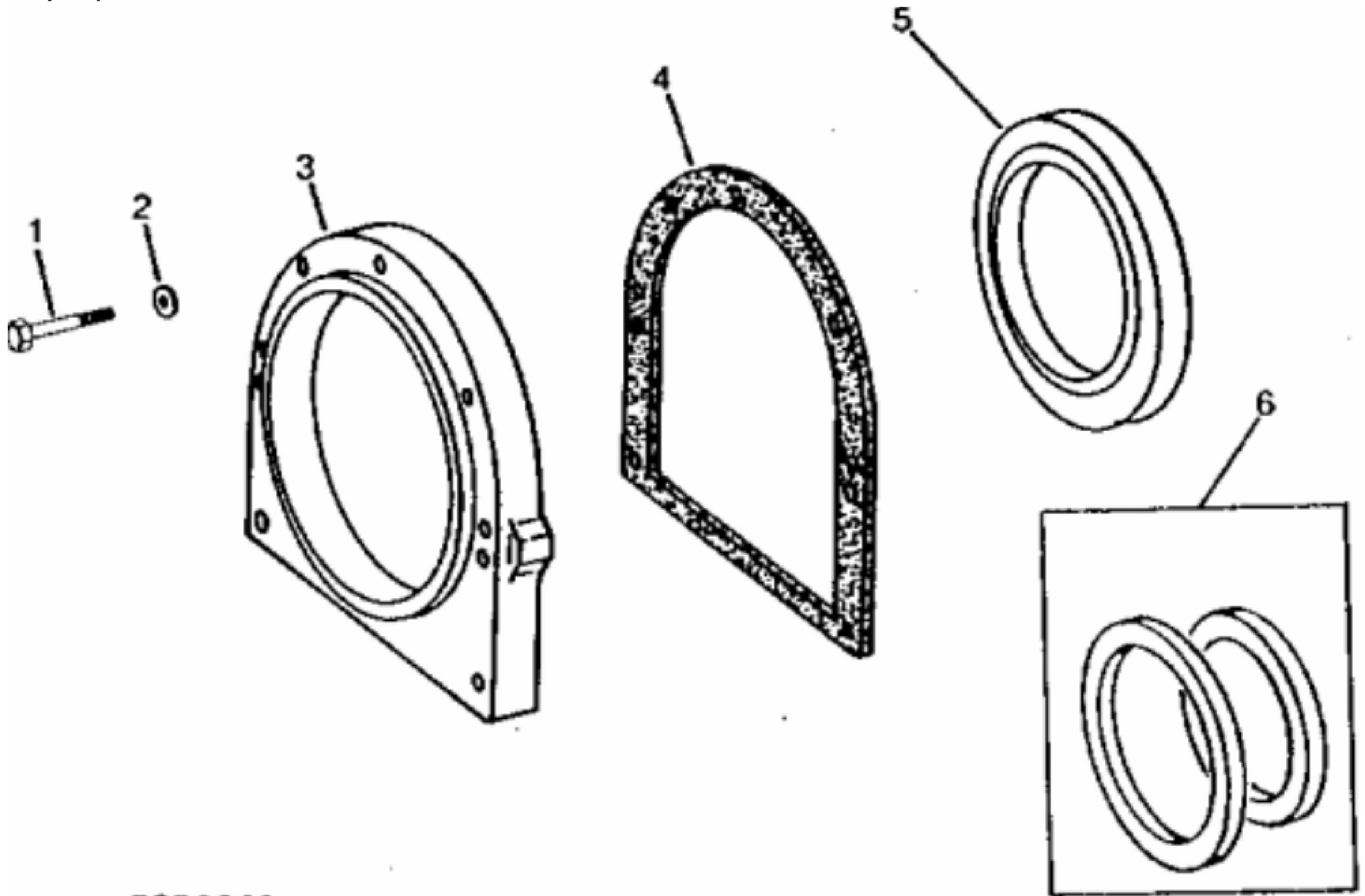
KEY	PART NO.	PART NAME	QTY	REMARKS
2	4183995	CUSHION	4	(SUB FOR AT131720)
3	8045941	BRACKET	2	(SUB FOR AT132114)
4	4247426	BUSHING	2	(SUB FOR AT132006)
5	T56006	WASHER	2	(SUB FOR AT121240)
6	J932215	BOLT	2	(SUB FOR AT131550)
7	J951022	NUT	2	(SUB FOR TH102457)
8	4114405	WASHER	8	(SUB FOR TH101105)
9	19H2588	CAP SCREW	8	5/8" X 1-7/8"
11	4245453	ISOLATOR	4	(SUB FOR AT131999)
12	7020937	BRACKET	1	(SUB FOR AT132054)
13	4236515	BUSHING	2	(SUB FOR AT131959)
14	19M7954	CAP SCREW	2	M16 X 150, (SUB FOR AT131549)
15	14M7276	NUT	2	M16
16	4114405	WASHER	2	(SUB FOR TH101105)
17	T12637	SCREW	4	(SUB FOR 19H2473)
18	4086891	WASHER	4	(SUB FOR 12H301, THIS APPLICATION) (SUB FOR TH104166)
25	AT131661	HOSE	1	
26	AT131662	HOSE	1	
28	AT50923	HOSE CLAMP	1	
67	4247609	BRACKET	1	(SUB FOR AT132553)
68	4249743	STRAP	1	(SUB FOR AT132556)
69	19H2716	CAP SCREW	2	3/4" X 1-1/2"
70	12H236	LOCK WASHER	2	3/4"
72	RE35791	CLAMP	1	(SUB FOR AT132494 OR AT117396)
73	AT39141	HOSE CLAMP	2	(SUB FOR TH108308 OR AH104837, THIS APPLICATION)



RGP2529

KEY	PART NO.	PART NAME	QTY	Engine Serial No.	REMARKS	
1	R60161	DOWEL PIN	AR			
2	26H12	SHAFT KEY	1	____-060732	1/8" X 3/4"	
2	26H72	SHAFT KEY	1	060733-____	1/8" X 5/8"	
3	R35045	GEAR	1			
4	AR72118	CRANKSHAFT	1	____-040631	(MARKED R36350) (SUB AR92533)	
5	R63326	GEAR	1	040632-____	(SUB AR92533, APPL)	
6	AR92533	CRANKSHAFT	1	040632-____	(MARKED R63476, AR78403 OR RE57730)	
7	26H85	SHAFT KEY	1		1/4" X 1"	

KEY	PART NO.	PART NAME	QTY	Engine Serial No.	REMARKS
1	AR89622	THRUST WASHER	1		STD (PKG.(3) R62910)
1	AR89971	THRUST WASHER	1		0.18 MM (.007") OS FLANGE (PKG. (2) R69040 AND R62910)
2	AR101398	THRUST BEARING	1	____-045261	STD (PKG R66339 AND R66340 OR R75146 AND R75147) (SUB AR101269)
2	AR101269	THRUST BEARING	1	045262-____	STD (PKG. R74669 AND R74670) (SUB FOR AR101398)
2	AR104125	THRUST BEARING	1		0.05 MM (.002") US, (PKG. R69032 AND R69033, R75157 AND R75158 OR R76641 AND R76642) (SUB FOR AR101399)
2	AR104126	THRUST BEARING	1		0.25 MM (.010") US, (PKG. R69034 AND R69035, R75159 AND R75160 OR R76643 AND R76644) (SUB FOR AR101400)
2	AR104127	THRUST BEARING	1		0.50 MM (.020") US, (PKG. R69036 AND R69037, R75161 AND R75162 OR R76645 AND R76646) (SUB FOR AR101401)
2	AR104128	THRUST BEARING	1		0.75 MM (.030") US, (PKG. R69038 AND R69039, R75163 AND R75164 OR R76647 AND R76648) (SUB FOR AR101402)
3	AR101268	BEARING	AR		STD (PKG. R74667 AND R74668) (SUB FOR AR101393)
3	AR104121	BEARING	AR		0.05 MM (.002") US, (PKG. R52529 AND R60183 OR R75149 AND R75150 OR R76633 AND R76634) (SUB FOR AR73014)
3	AR104122	BEARING	AR		0.25 MM (.010") US, (PKG. R52530 AND R60184, R75151 AND R75152 OR R76635 AND R76636) (SUB FOR AR73015)
3	AR104123	BEARING	AR		0.50 MM (.020") US, (PKG. R52531 AND R60185, R75153 AND R75154 OR R76637 AND R76638) (SUB FOR AR73016)
3	AR104124	BEARING	AR		0.75 MM (.030") US, (PKG. R52532 AND R60186, R75155 AND R75156 OR R76639 AND R76640) (SUB FOR AR73017)



RGP 3941

Thank you so much for reading.
Please click the “Buy Now!”
button below to download the
complete manual.



After you pay.

You can download the most
perfect and complete manual in
the world immediately.

Our support email:

ebooklibonline@outlook.com