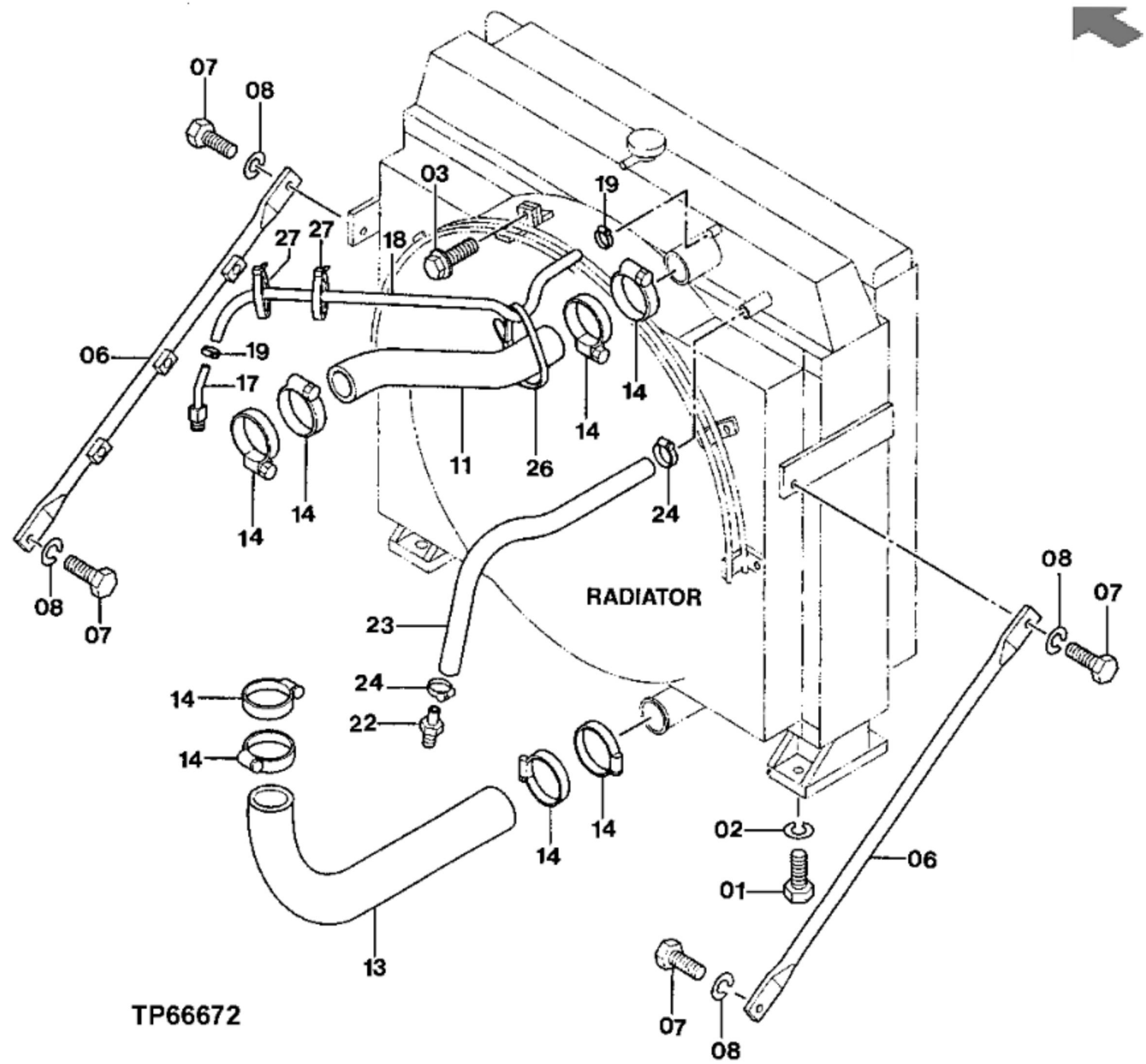


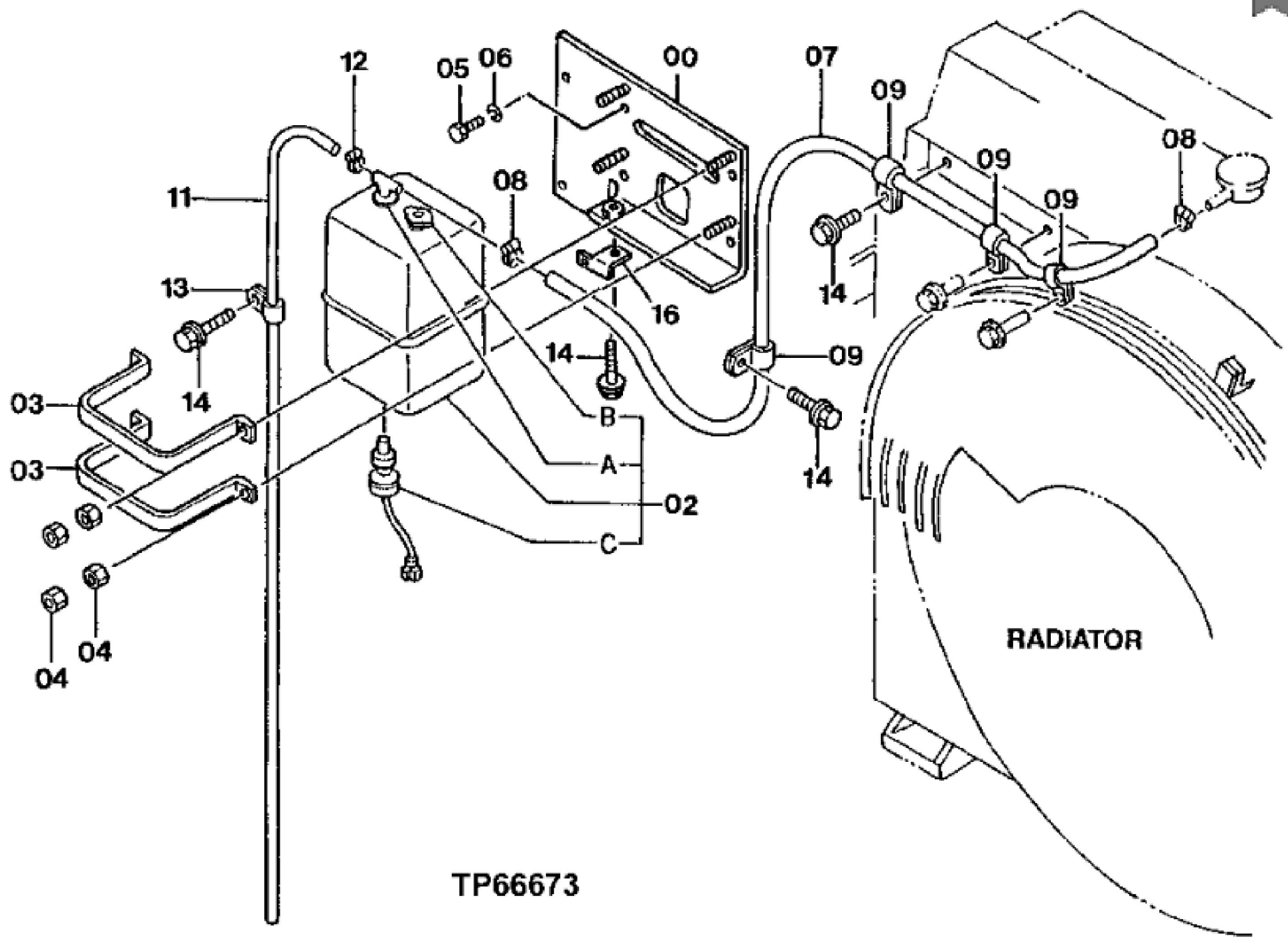
KEY	PART NO.	PART NAME	QTY	REMARKS
1	4410245	CORE	1	SUB FOR 4377448 OR TH4377448
2	4231888	FILLER CAP	1	SUB FOR AT122559
3	4248510	DRAIN PLUG	1	SUB FOR TH4248510
4	4206316	RADIATOR HOSE	1	SUB FOR TH4206316
5	4143888	HOSE CLAMP	1	SUB FOR TH4143888
6	4379474	SHROUD	1	SUB FOR TH4379474
7	19M7662	CAP SCREW	12	M10 X 30
7	12M7066	LOCK WASHER	12	10 mm
7	24M7028	WASHER	12	10.500 X 20 X 2 mm
8	4379472	GUARD	1	SUB FOR TH4379472
9	4296257	OIL COOLER	1	SUB FOR TH4296257
10	19M7662	CAP SCREW	8	M10 X 30
10	12M7066	LOCK WASHER	8	10 mm
10	24M7028	WASHER	8	10.500 X 20 X 2 mm
11	4252612	ISOLATOR	2	SUB FOR TH4252612
12	4325442	SCREEN	1	SUB FOR TH4325442
13	21M1690	WING SCREW	2	M6 X 16
14	4252614	ISOLATOR	4	SUB FOR TH4252614
15	4257370	SHIM	1	SUB FOR TH4257370
16	T116304	BOLT	4	SUB FOR TH4297797 OR 4297797
16	24M7047	WASHER	4	13 X 24 X 2.500 mm
16	12M7067	LOCK WASHER	4	12 mm
17	4252615	ISOLATOR	8	SUB FOR TH4252615
18	4259787	SWITCH	1	Level Switch Not Illustrated



TP66672

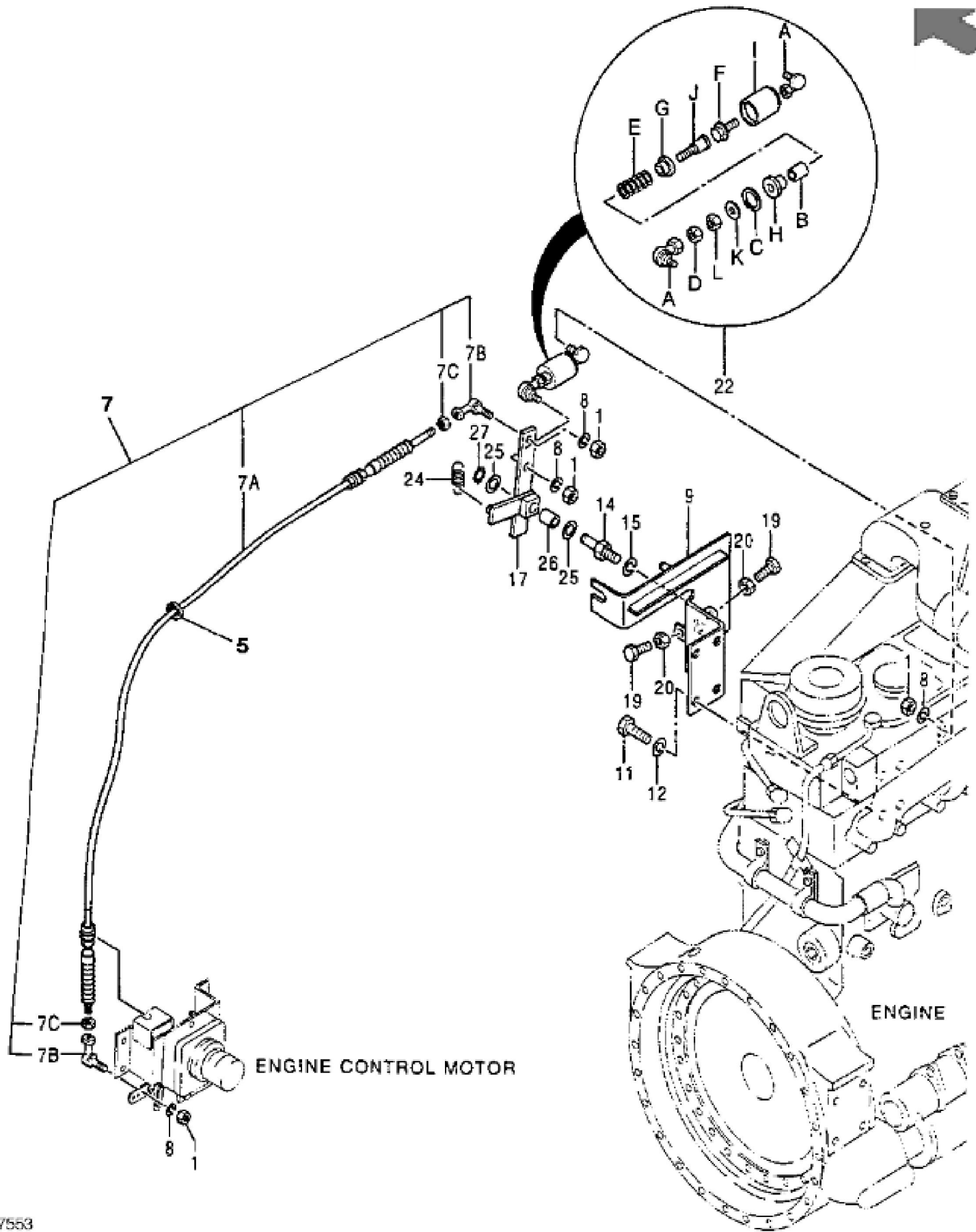
John Deere > Construction And Forestry > EXCAVATOR > 550LC - EXCAVATOR > 550LC Excavator > 05 ENGINE AUXILIARY SYSTEM > 0510 ENGINE COOLING SYSTEMS > ST266783 - RADIATOR, HOSES AND SUPPORTS

KEY	PART NO.	PART NAME	QTY	REMARKS
1	19M7409	CAP SCREW	4	M16 X 50
2	12H294	LOCK WASHER	4	5/8"
3	19M7402	CAP SCREW	6	M10 X 25
3	12M7066	LOCK WASHER	6	10 mm
3	24M7028	WASHER	6	10.500 X 20 X 2 mm
6	8061397	BRACE	2	(SUB FOR TH8061397)
7	19M8035	CAP SCREW	4	M16 X 35
8	12H294	LOCK WASHER	4	5/8"
11	4382251	RADIATOR HOSE	1	(SUB FOR TH4382251)
13	4292043	RADIATOR HOSE	1	(SUB FOR TH4292043)
14	TY22473	CLAMP	8	(SUB FOR AR62936)
17	4224198	FITTING	1	(SUB FOR TH4224198)
18	4375133	RADIATOR HOSE	1	(SUB FOR TH4375133)
19	TY22462	CLAMP	2	(SUB FOR AR48236)
22	4222380	FITTING	1	(SUB FOR TH4222380)
23	.....	BULK HOSE	1	700mm , (SUB FOR TH4222645 OR 4222645)(MAKE FROM TY24403, CUT TO LENGTH 700MM (2))
24	TY22467	CLAMP	2	
26	H77698	TIE BAND	1	
27	H77698	TIE BAND	2	



TP66673

KEY	PART NO.	PART NAME	QTY	REMARKS
0	8060946	BRACKET	1	(SUB FOR TH8060946)
2	4414411	TANK	1	(SUB FOR TH4184198)
2A	4414475	CAP	1	(SUB FOR TH4234534)
2B	4414476	CAP	1	(SUB FOR TH4234535)
2C	4234536	SWITCH	1	(SUB FOR AT131966)
3	4222379	HALF CLAMP	2	(SUB FOR TH4222379)
4	14M7274	NUT	8	M10
5	19M7402	CAP SCREW	4	M10 X 25
6	12M7066	LOCK WASHER	4	10 mm
7	.....	RADIATOR HOSE	1	CUT TO 1160mm FROM BULK , Furnish, (TY25195) (SUB FOR TH4294375)
8	TY22464	CLAMP	2	(SUB FOR AR21836)
9	AH79175	CLIP	4	(SUB FOR TH108600 OR 4190272)
11	.....	BULK HOSE	1	BULK MATERIAL CTL 1500mm , Furnish, (SUB FOR TH4194931, 4194931) (4353956 NLA) (PMK010-0406)
12	TY22462	CLAMP	1	(SUB FOR AR48236)
13	T30367	CLAMP	1	
14	19M7402	CAP SCREW	4	M10 X 25
14	12M7066	LOCK WASHER	4	10 mm
16	4257159	BRACKET	1	(SUB FOR AT154243)



Thank you so much for reading.  
Please click the “Buy Now!”  
button below to download the  
complete manual.



After you pay.

You can download the most  
perfect and complete manual in  
the world immediately.

Our support email:

[ebooklibonline@outlook.com](mailto:ebooklibonline@outlook.com)