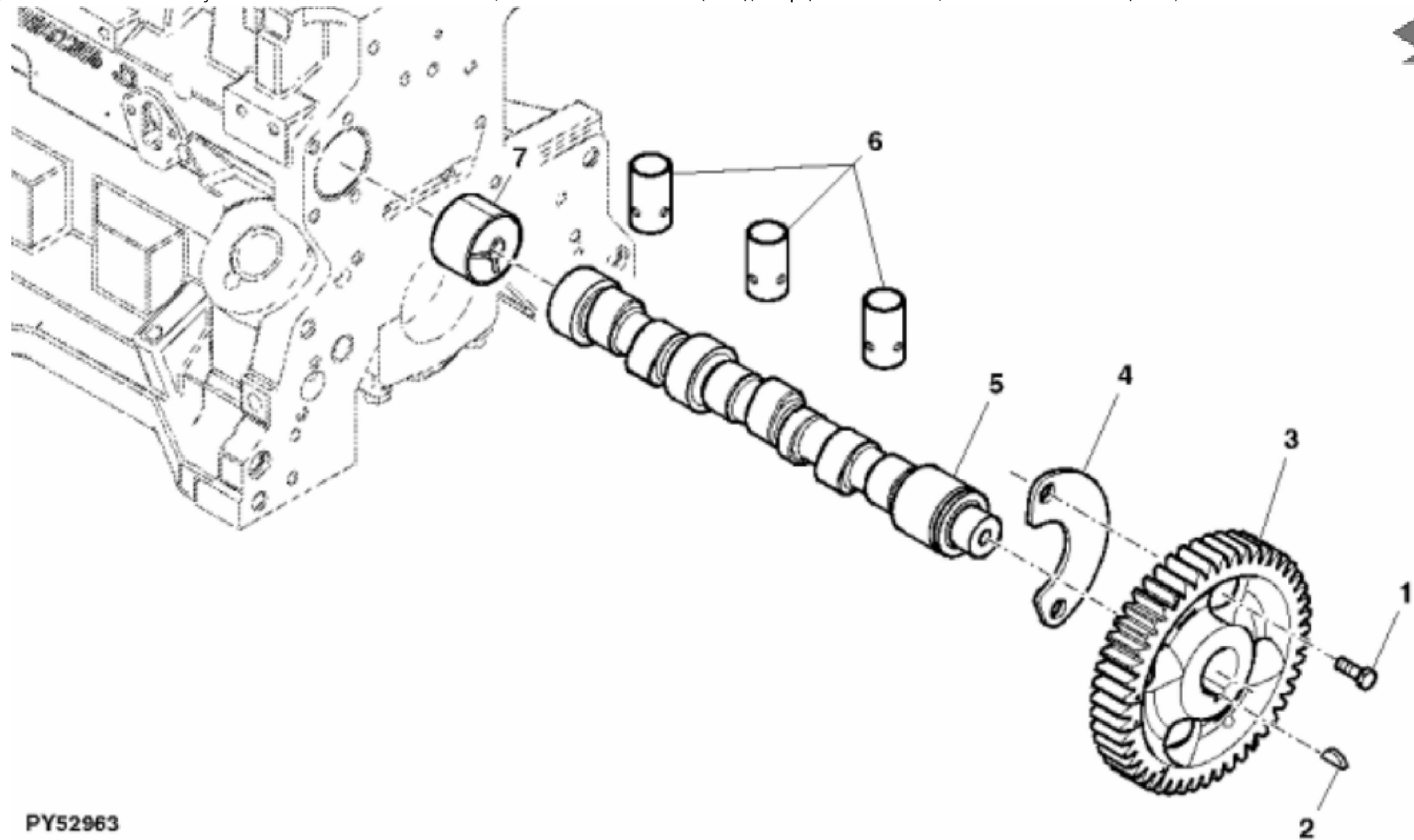


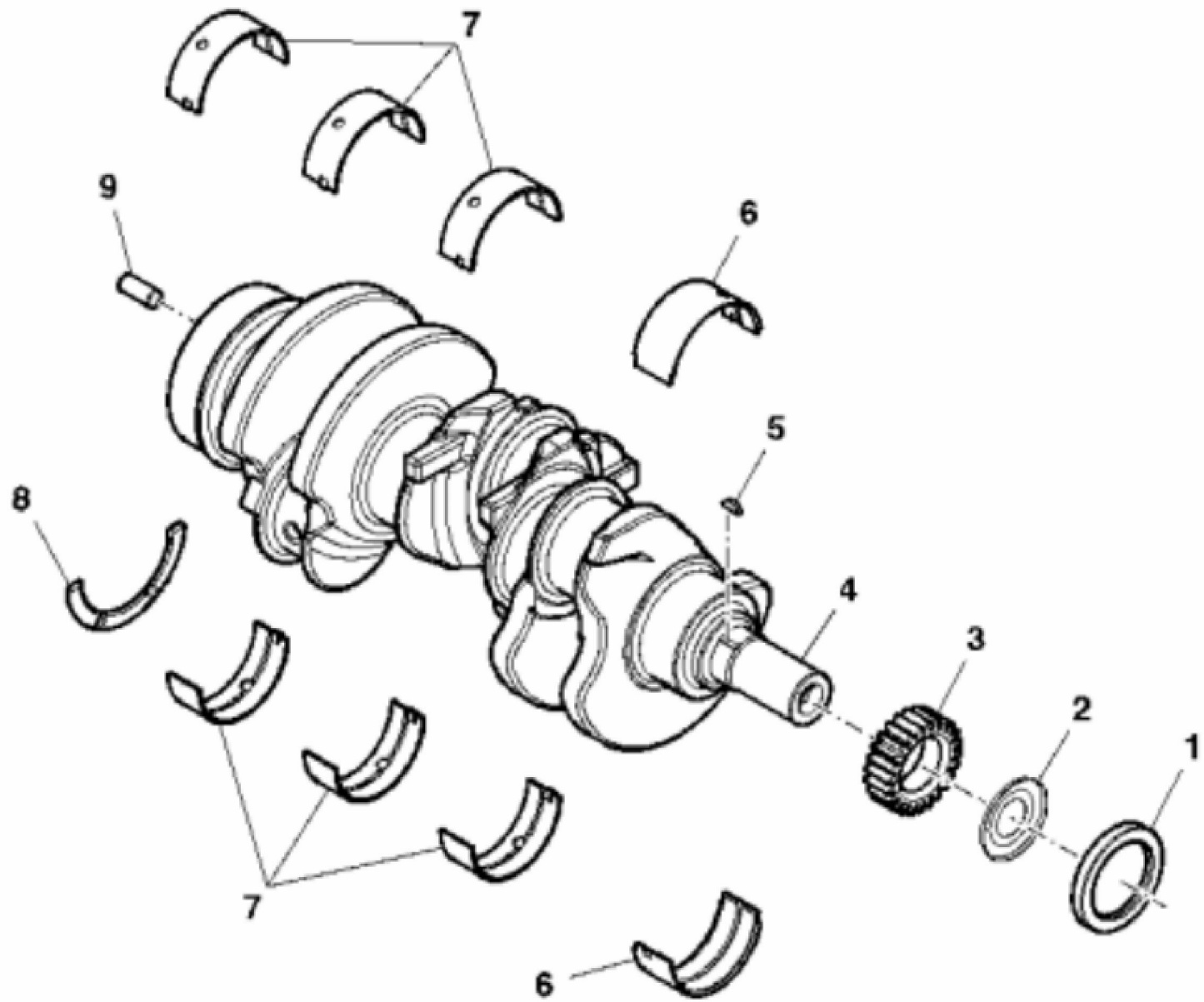
John Deere > Turf And Utility >TRACTOR >5055E - TRACTOR >5055E, 5065E and 5075E Tractors (Tier3)(Europe/Australia Edition, 9X3 TSS Transmission W/ OOS) >20 ENGINE >ST356416 - CYLINDER BLOCK

KEY	PART NO.	PART NAME	QTY	REMARKS
1	R54802	ORIFICE	3	
2	A120R	DOWEL PIN	4	OD= 12.7 MM
3	B153R	DOWEL PIN	2	OD= 9.5 MM
4	19H1912	CAP SCREW	2	3/8" X 3-1/2"
5	T25701	STUD	1	
6	T18891	PLUG	2	
7	R26493	BUSHING	1	
8	R111137	SPRING	1	
9	R121043	VALVE	1	
10	R528387	CAP SCREW	8	
11	R32214	WASHER	8	
12	R65215	BEARING CAP	3	
13	R65214	BEARING CAP	1	
14	R97185	O-RING	1	
15	CYLINDER BLOCK	1	ORDER RE538002; MARKED R130874
16	T23435	THREADED NIPPLE	1	
17	RE71255	PIPE PLUG	2	
18	15H275	PIPE PLUG	1	1/4"
19	15H653	PIPE PLUG	1	1"
20	15H695	PIPE PLUG	1	3/8"
21	14H1076	NUT	1	3/8"
22	D2361R	BALL	1	



PY52963

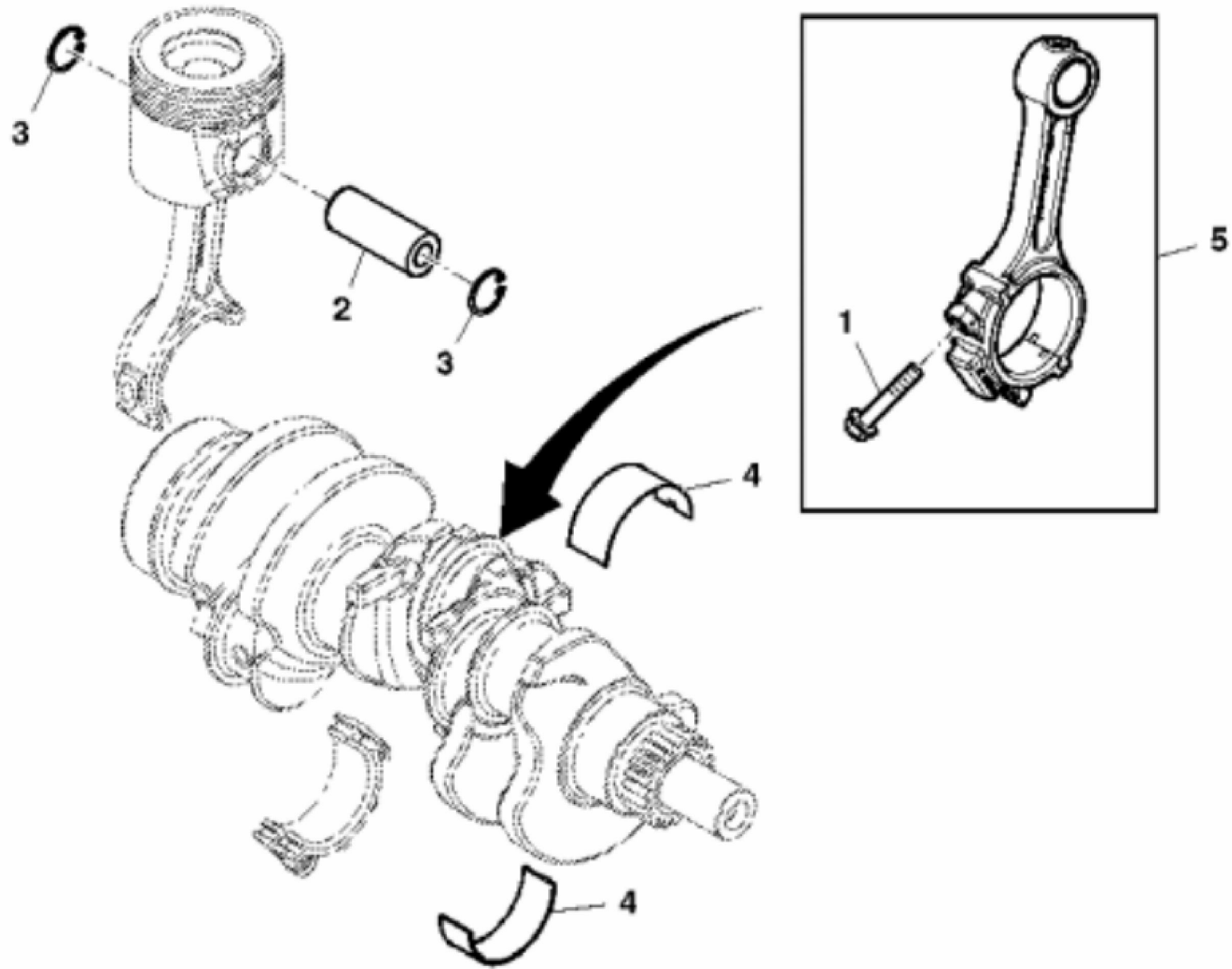
KEY	PART NO.	PART NAME	QTY	REMARKS	
1	19H218	CAP SCREW	2	3/8" X 1"	
2	26H72	SHAFT KEY	1	1/8" X 5/8"	
3	R503793	GEAR	1		
4	R515091	PLATE	1		
5	RE540035	CAMSHAFT	1	(INCL KEYS 2 & 3)	
6	R515092	CAM FOLLOWER	6		
7	R119874	BUSHING	1		



PY52964

John Deere > Turf And Utility >TRACTOR >5055E - TRACTOR >5055E, 5065E and 5075E Tractors (Tier3)(Europe/Australia Edition, 9X3 TSS Transmission W/ OOS) >20 ENGINE >ST356418 - CRANKSHAFT / BEARINGS

KEY	PART NO.	PART NAME	QTY	REMARKS	
1	AR67942	SEAL	1		
2	T20046	OIL SLINGER	1		
3	R538912	GEAR	1	SUB FOR R504262 AND R100850	
4	RE502385	CRANKSHAFT	1	(FOR GRINDING GUIDELINES: SEE RELEVANT CTM)	
5	26H72	SHAFT KEY	1	1/8" X 5/8"	
6	R515305	BEARING	2	STD	
7	R515304	BEARING	6	STD	
8	R516362	THRUST WASHER	3		
9	A120R	DOWEL PIN	1	OD= 12.7 MM	



PY52965

Thank you so much for reading.
Please click the “Buy Now!”
button below to download the
complete manual.



After you pay.

You can download the most
perfect and complete manual in
the world immediately.

Our support email:

ebooklibonline@outlook.com