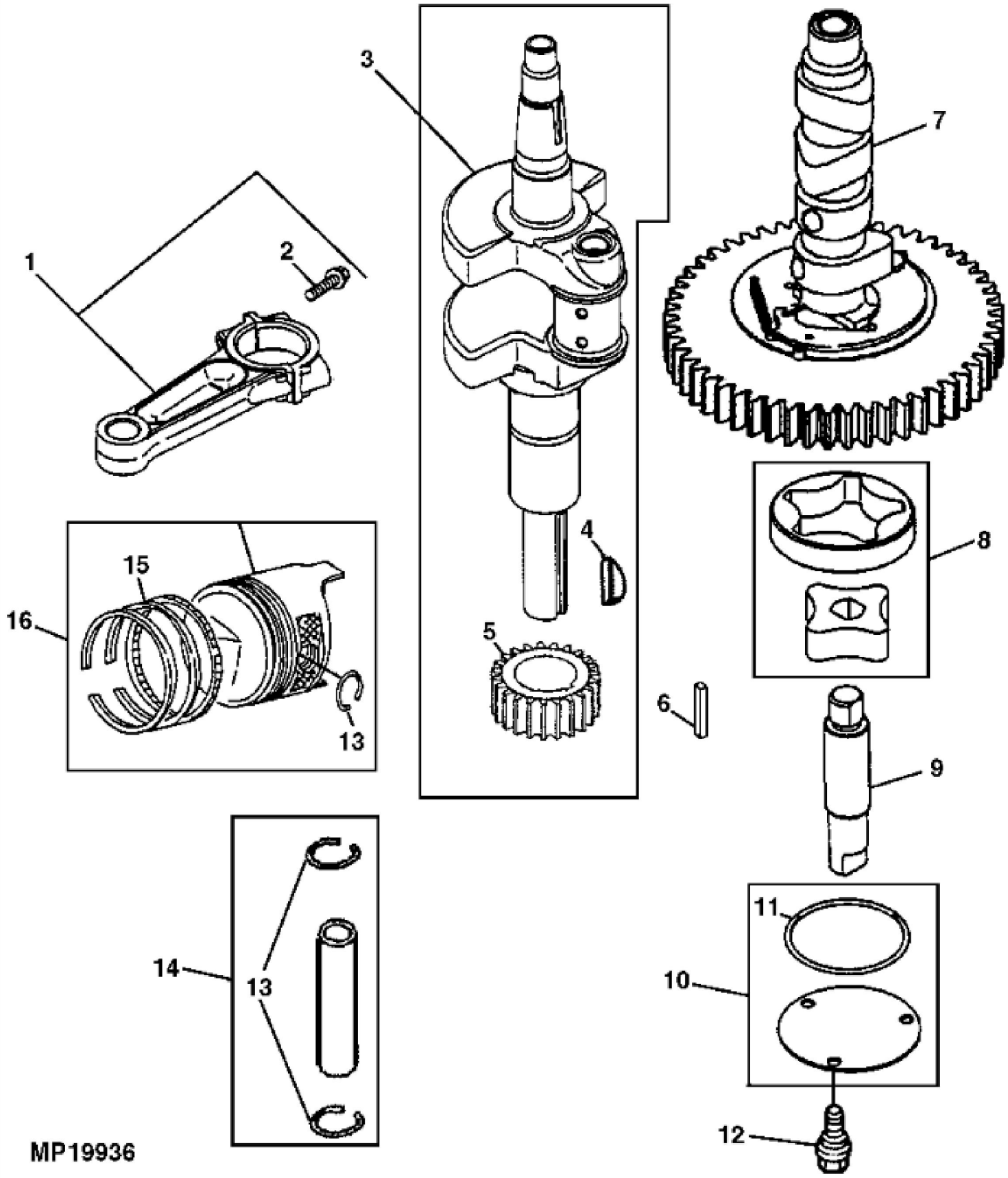


PU01597

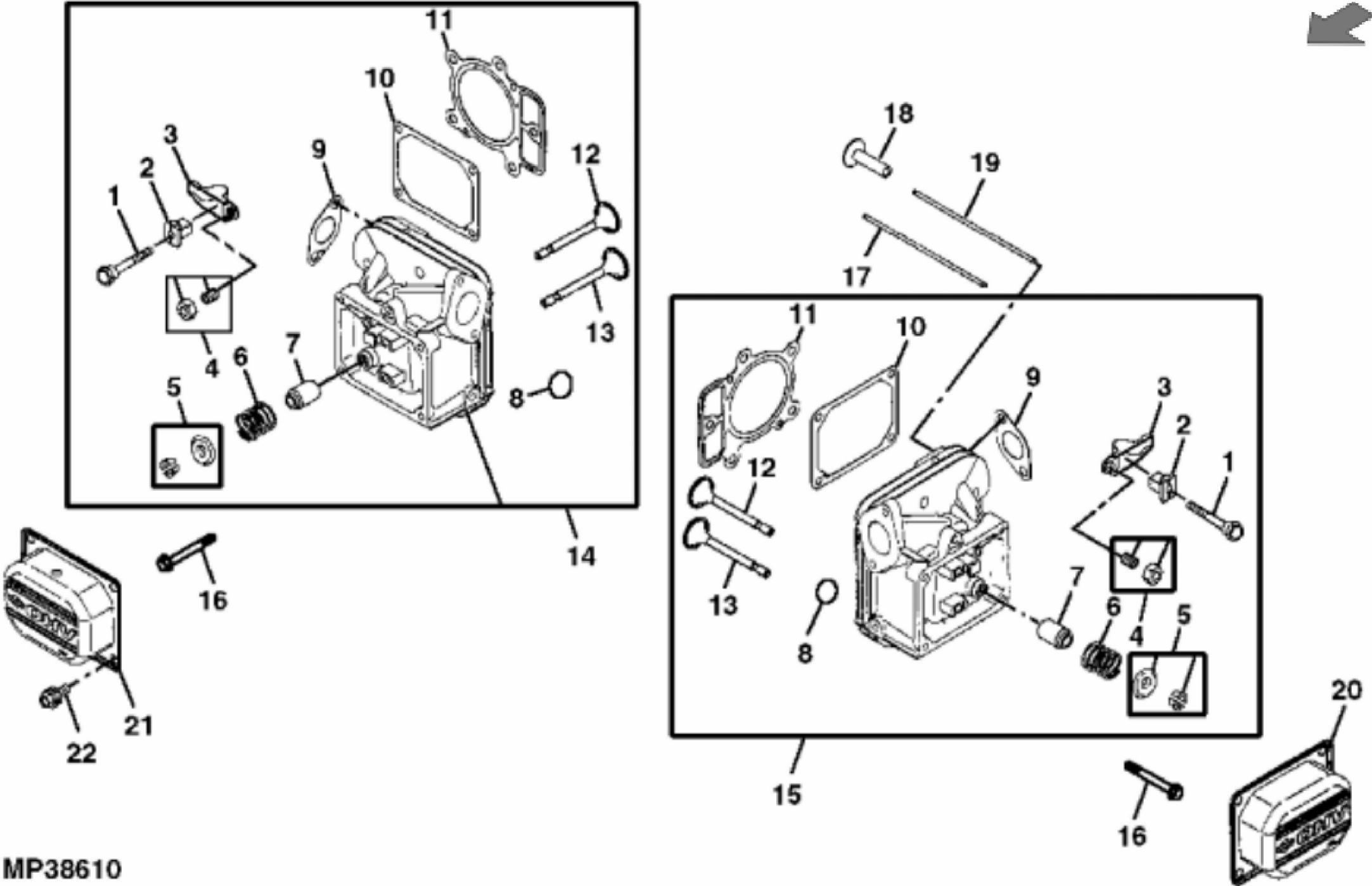
KEY	PART NO.	PART NAME	QTY	REMARKS	
1	UC11104	DIPSTICK	1	SUB FOR LG499602	
2	LG691031	O-RING	1		
3	LG691036	DIPSTICK	1		
4	LG691032	SEAL	1		
5	LG691037	OIL TUBE	1		
6	LG691108	SCREW	1		
6	37H74	SCREW	1		
6	M153266	SCREW	1		
7	LG391086S	SEAL	1		
8	MIA11778	SEAL KIT	1	(SUB FOR LG499585)	
9	LG690959	DOWEL PIN	6		
10	MIA10607	CYLINDER	1	NLA; ORDER MIA11033	
10	MIA11033	CYLINDER	1	NLA; ORDER MIA12510	
10	MIA13076	CYLINDER	1	SUB FOR MIA12510	
11	MIU14436	GASKET	1	SUB FOR M150226 AND MIU13979	
12	LG690770	SCREEN	1		
12	MIU12140	SCREEN	1	(USE WITH MIA11584)	
13	LG690946	DRAIN PLUG	1	NLA; ORDER 15H623 (USE WITH MIA11584)	
13	15H623	PIPE PLUG	1	3/8"	
13	LG691680	DRAIN PLUG	1		
14	LG690954	THREADED NIPPLE	1		
15	15H638	PIPE PLUG	1	1/8"	
16	MIU11958	SEAL	1	(SUB FOR LG690947 OR MIU11212)	
17	M142284	SEAL	1	NLA; ORDER MIU11284; MARKED 445777-0264-E1; Governor Shaft	
17	MIU11284	SEAL	1	MARKED 445877-0130-E1; USE WITH MIA11584; Governor Shaft	
18	M142281	BUSHING	1	GOVERNOR CRANK	
19	AM134054	RESERVOIR	1	NLA (SUB MIA11584)	
19	MIA11584	RESERVOIR	1	(ALSO INCLUDES MIU12143, MIA11464 AND (3) MIU12142)	
20	GY20577	OIL FILTER	1	NLA, KIT (W/ PACKAGING)	
20	AM125424	OIL FILTER	1		
21	LG690957	RETAINER	1		
22	LG690956	FILTER ELEMENT	1	NLA; ORDER MIU11502; ENGINE MARKED 445777-0264-E1	
22	MIU11502	BREATHER	1	ENGINE MARKED 445877-0130-E1; SUB FOR LG690956	

KEY	PART NO.	PART NAME	QTY	REMARKS	
23	LG691108	SCREW	3		
24	LG690942	STRUCTURAL TUBE	1	ORDER MIU11280	
24	MIU14443	TUBE	1	SUB FOR MIU11280	
25	LG690937	GASKET	1		
26	MIA10872	BREATHER	1	(SUB FOR LG499601)	
27	M142896	SCREW	10		
28	LG691045	CRANK	1	GOVERNOR	
29	M142282	BUSHING	2		
30	M142286	RETAINER	1		
31	M142280	WASHER	1		
32	GC00331	SCREW	4	NLA; ORDER GX24210; Engine Mounting	
32	GX24210	SCREW	4		
33	AM131611	DRAIN PLUG	1	OIL DRAIN	
34	TUBE	1		
35	T77932	O-RING	1		
36	M144897	CAP	1		
..	MIA10363	GASOLINE ENGINE	1	NLA; ORDER MIA12447; MARKED 445777-0264-E1; SUB MIA10809	
..	MIA10809	GASOLINE ENGINE	1	MARKED 445877-0130-E1	
..	MIA12447	GASOLINE ENGINE	1	SUB FOR MIA10809	



MP19936

KEY	PART NO.	PART NAME	QTY	REMARKS	
1	MIA11459	CONNECTING ROD	2	(SUB FOR AM135101)	
2	LG690976	SCREW	2		
3	AM135083	CRANKSHAFT	1	(SUB MIA11457)	
3	MIA11457	CRANKSHAFT	1	(INCLUDES LG690980)	
4	26H4	SHAFT KEY	1	1/8" X 3/8"	
5	LG690980	GEAR	1	TIMING	
6	LG222698S	SHAFT KEY	1	FLYWHEEL	
7	MIA10916	CAMSHAFT	1	(ENGINE MARKED 445777-0264-E1) (INCLUDES (4) LG690977) (SUB FOR MIA10636)	
7	MIA11038	CAMSHAFT	1	(ENGINE MARKED 445877-0130-E1) (INCLUDES (4) LG690977)	
8	MIA11172	OIL PUMP	1	(SUB FOR LG499054)	
8	MIU12143	OIL PUMP	1	(USE WITH MIA11584)	
9	LG691042	SHAFT	1	NLA; ORDER MIA11172	
9	MIA11172	OIL PUMP	1		
10	LG499613	COVER	1		
10	MIA11464	COVER	1	(USE WITH MIA11584)	
11	LG690589	SEAL	1		
11	MIU12153	SEAL	1	(USE WITH MIA11584)	
12	M151228	SCREW	3		
12	MIU12142	SCREW	3	(USE WITH MIU12143)	
13	LG690975	LOCK	2		
14	LG690229	PISTON PIN	2		
15	AM129799	PISTON RING KIT	1	STD (ENGINE MARKED 445777-0264-E1) (SUB MIA10996)	
15	MIU11282	PISTON RING KIT	1	SUB FOR MIU11453; USE WITH MIA10996; STD	
15	MIU11283	PISTON RING KIT	1	.020" (.50 MM) OS, (ENGINE MARKED 445877-0130-E1)	
16	MIA10996	PISTON	2	STD (ENGINE MARKED 445777-0264-E1) (SUB FOR AM129798)	
16	MIA11036	PISTON	2	STD (ENGINE MARKED 445877-0130-E1)	
16	MIA11037	PISTON	2	.020" (.50 MM) OS, (ENGINE MARKED 445877-0130-E1)	



MP38610

Thank you so much for reading.
Please click the “Buy Now!”
button below to download the
complete manual.



After you pay.
You can download the most
perfect and complete manual in
the world immediately.

Our support email:
ebooklibonline@outlook.com