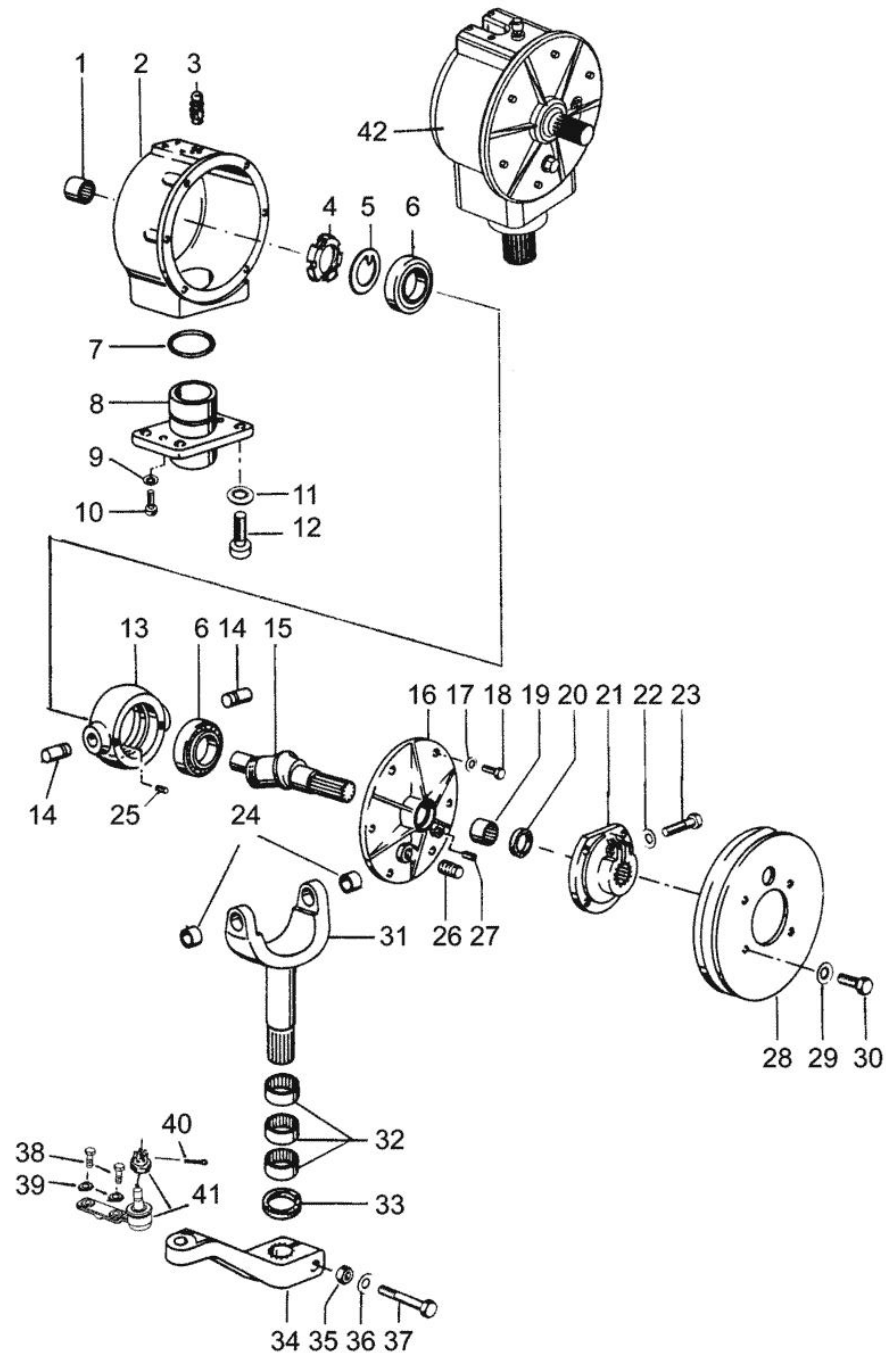


Section: Cutting table and feeding elevator

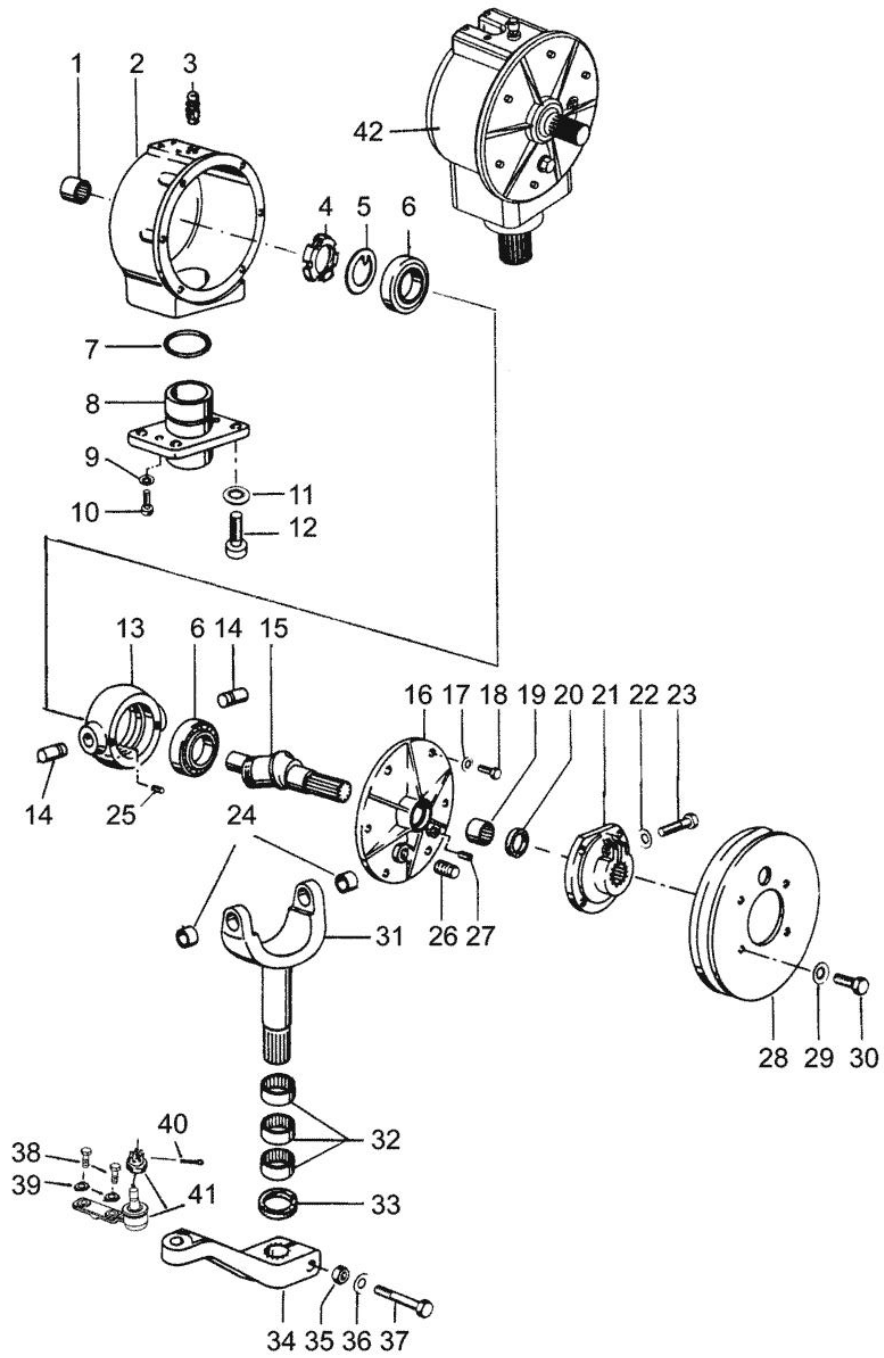
KNIFE DRIVING MECHANISM HD 5,1 - 5,7

| Fig. | P/n | QTY | Name |
|------|-----|-----|------|
|------|-----|-----|------|

Notes:
[5545H]

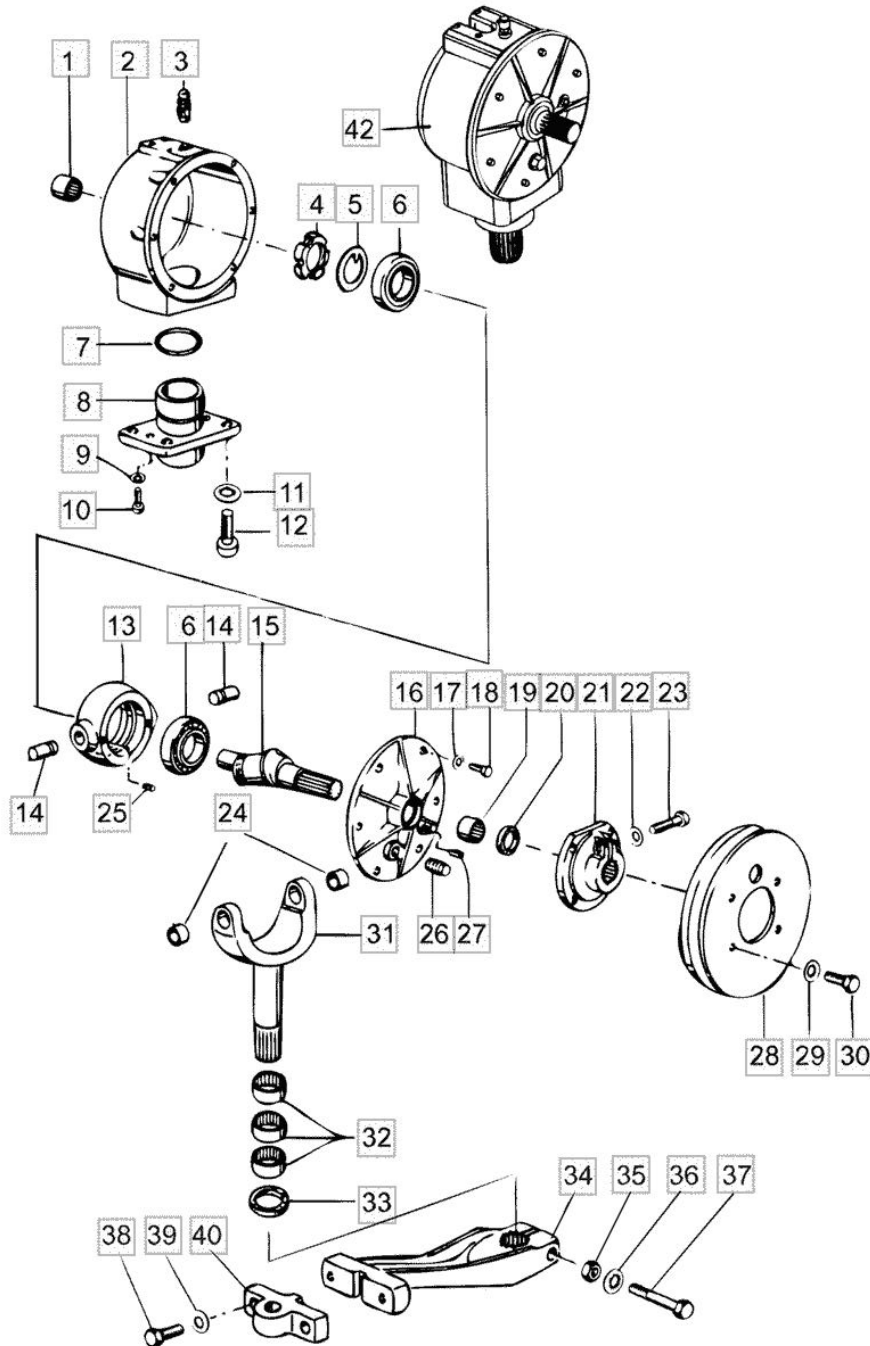
| | | | |
|----|---------|---|----------------------|
| 1 | 0487001 | 1 | bearing |
| 2 | 0487002 | 1 | box |
| 3 | 0487003 | 1 | breather |
| 4 | 0487037 | 1 | nut |
| 5 | 0487038 | 1 | lock-nut |
| 6 | 0487039 | 2 | bearing |
| 7 | 0487015 | 1 | ring |
| 8 | 0487042 | 1 | box |
| 9 | 0487017 | 2 | washer |
| 10 | 0487018 | 2 | screw |
| 11 | 0487032 | 4 | spring washer |
| 12 | 0487033 | 4 | screw |
| 13 | 0487040 | 1 | box |
| 14 | 0487009 | 2 | pin |
| 15 | 0487041 | 1 | injection pump shaft |
| 16 | 0487012 | 1 | cover |
| 17 | 7414469 | 6 | washer |
| 18 | 6221267 | 6 | screw |
| 19 | 0487013 | 1 | bearing |
| 20 | 0487014 | 1 | ring for fitting |
| 21 | 0487026 | 1 | hub |
| 22 | 0487027 | 1 | washer |
| 23 | 0487028 | 1 | screw |
| 24 | 0487020 | 2 | bushing |
| 25 | 0487043 | 2 | screw |
| 26 | 0487024 | 1 | connector |
| 27 | 0487025 | 1 | connector |
| 28 | 0487029 | 1 | square pulley |
| 29 | 0487030 | 4 | spring washer |
| 30 | 0487031 | 4 | screw |
| 31 | 0487044 | 1 | shaft |
| 32 | 0487022 | 3 | bearing |
| 33 | 0487023 | 1 | ring for fitting |
| 34 | 0487034 | 1 | spring rocker arm |
| 35 | 0487035 | 1 | nut |
| 36 | 0487036 | 1 | spring washer |
| 37 | 6233577 | 1 | screw |
| 38 | 6231167 | 2 | screw |
| 39 | 7414473 | 2 | washer |
| 40 | 7812123 | 1 | split pin |
| 41 | 0424375 | 1 | joint |

Section: Cutting table and feeding elevator

KNIFE DRIVING MECHANISM HD 5,1 - 5,7

| Fig. | P/n | QTY | Name |
|------|---------|-----|---------|
| 42 | 0424371 | 1 | gearbox |

Section: Cutting table and feeding elevator

KNIFE DRIVING MECHANISM HD 6,0 -

| Fig. | P/n | QTY | Name |
|------|-----|-----|------|
|------|-----|-----|------|

Notes:
[5545H]

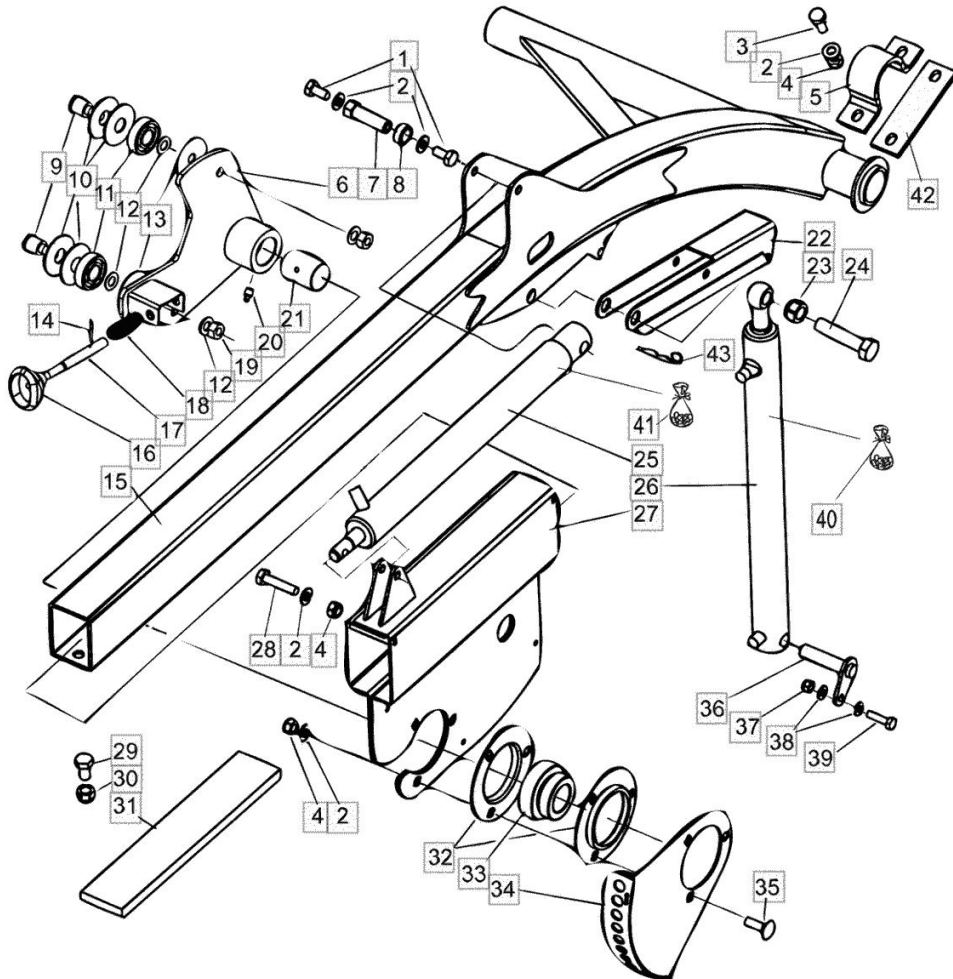
| | | | |
|----|---------|---|----------------------|
| 1 | 0487001 | 1 | bearing |
| 2 | 0487002 | 1 | box |
| 3 | 0487003 | 1 | breather |
| 4 | 0487037 | 1 | nut |
| 5 | 0487038 | 1 | lock-nut |
| 6 | 0487039 | 2 | bearing |
| 7 | 0487015 | 1 | ring |
| 8 | 0487042 | 1 | box |
| 9 | 0487017 | 2 | washer |
| 10 | 0487018 | 2 | screw |
| 11 | 0487032 | 4 | spring washer |
| 12 | 0487033 | 4 | screw |
| 13 | 0487040 | 1 | box |
| 14 | 0487009 | 2 | pin |
| 15 | 0487041 | 1 | injection pump shaft |
| 16 | 0487012 | 1 | cover |
| 17 | 7414469 | 6 | washer |
| 18 | 6221267 | 6 | screw |
| 19 | 0487013 | 1 | bearing |
| 20 | 0487014 | 1 | ring for fitting |
| 21 | 0487026 | 1 | hub |
| 22 | 0487027 | 1 | washer |
| 23 | 0487028 | 1 | screw |
| 24 | 0487020 | 2 | bushing |
| 25 | 0487043 | 2 | screw |
| 26 | 0487024 | 1 | connector |
| 27 | 0487025 | 1 | connector |
| 28 | 0487029 | 1 | square pulley |
| 29 | 0487030 | 4 | spring washer |
| 30 | 0487031 | 4 | screw |
| 31 | 0487044 | 1 | shaft |
| 32 | 0487022 | 3 | bearing |
| 33 | 0487023 | 1 | ring for fitting |
| 34 | 0424452 | 1 | spring rocker arm |
| 35 | 0487035 | 1 | nut |
| 36 | 0487036 | 1 | spring washer |
| 37 | 6233577 | 1 | screw |
| 38 | 6231367 | 2 | screw |
| 39 | 7414473 | 2 | washer |
| 40 | 0424453 | 1 | flange |
| 42 | 0424371 | 1 | gearbox |

REEL CARRIER, LEFT

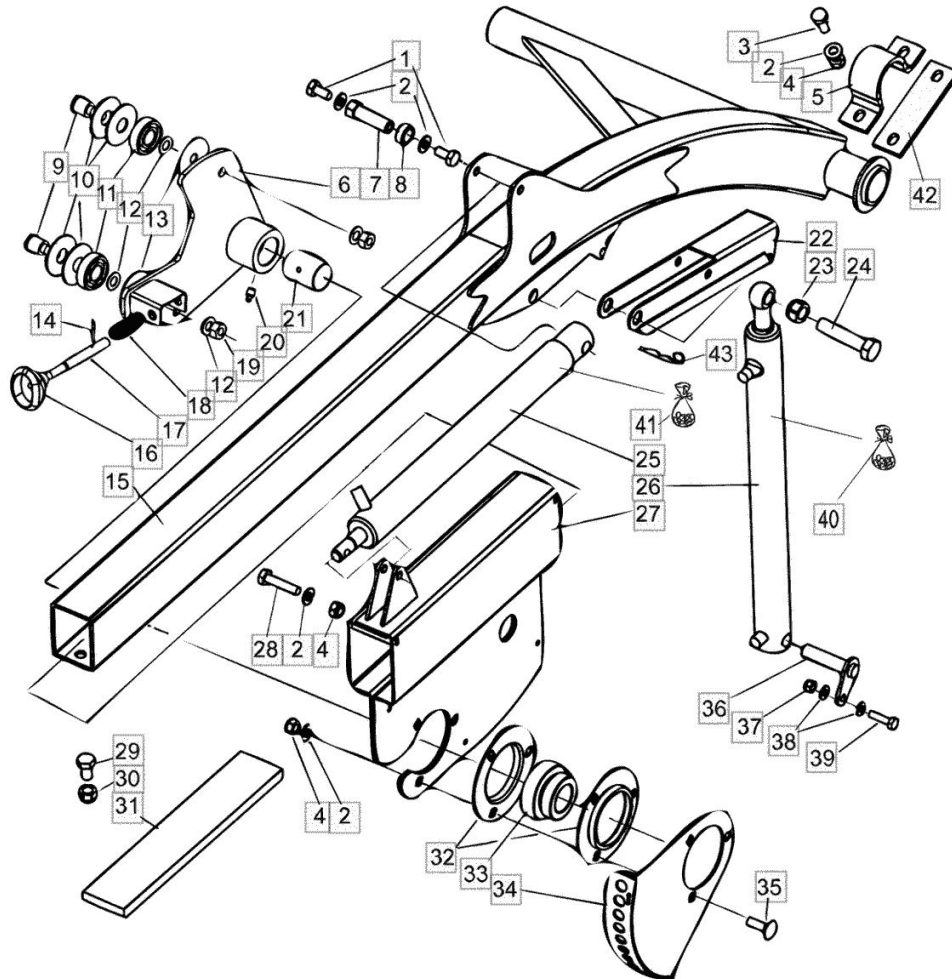
| Fig. | P/n | QTY | Name |
|------|-----|-----|------|
|------|-----|-----|------|

Notes:

[5545H]



| | | | |
|----|---------|---|------------------|
| 1 | 6226160 | 2 | screw |
| 2 | 7400033 | 8 | washer |
| 3 | 6226767 | 2 | screw |
| 4 | 6594148 | 6 | nut |
| 5 | R671440 | 1 | bearing |
| 6 | R698602 | 1 | lever |
| 7 | R698990 | 1 | pin |
| 8 | R698997 | 1 | special bushing |
| 9 | R596050 | 2 | pin |
| 10 | R683448 | 4 | disc |
| 11 | 0502364 | 2 | bearing |
| 12 | 7414473 | 4 | washer |
| 13 | R698606 | 2 | disc |
| 14 | 7414099 | 1 | pin |
| 15 | R698959 | 1 | carrier sx/lh/li |
| 16 | 0879942 | 1 | knob |
| 17 | R698607 | 1 | pin |
| 18 | 0415255 | 1 | spring |
| 19 | 6506634 | 2 | nut |
| 20 | 0252420 | 1 | grease gun |
| 21 | 0553074 | 1 | special bushing |
| 22 | R698982 | 1 | support |
| 23 | 6594438 | 1 | nut |
| 24 | 6242560 | 1 | screw |
| 25 | 0424348 | 1 | cylinder |
| 26 | 0424346 | 1 | cylinder |
| 27 | R698955 | 1 | bearing sx/lh/li |
| 28 | 6227177 | 1 | screw |
| 29 | 6230927 | 1 | screw |
| 30 | 6594238 | 1 | nut |
| 31 | 9698973 | 1 | plate |
| 32 | 0569323 | 2 | flange |
| 33 | 0511335 | 1 | bearing |
| 34 | R698608 | 1 | plate |
| | | | -> 660093 |
| 34 | R698680 | 1 | plate |
| | | | -> 660094 |
| 35 | 6763744 | 3 | screw |
| 36 | R698984 | 1 | pin |
| 37 | 6594048 | 1 | nut |
| 38 | 7400032 | 1 | washer |

REEL CARRIER, LEFT

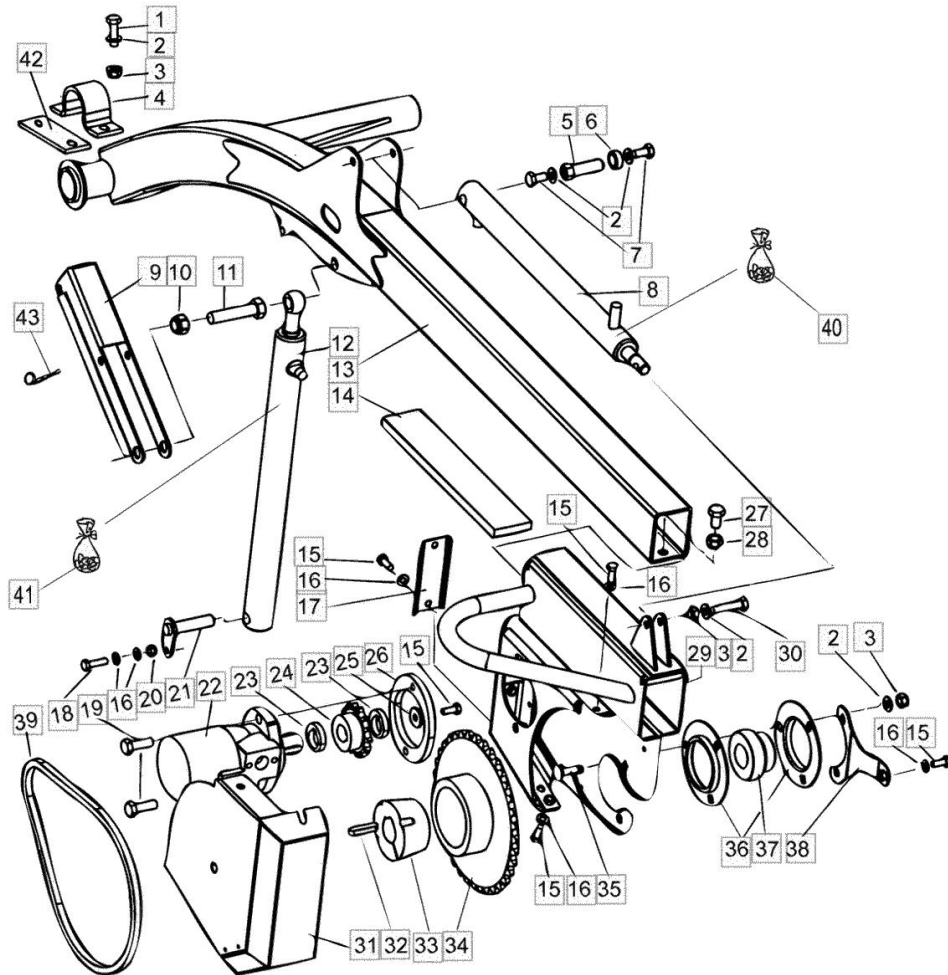
| Fig. | P/n | QTY | Name |
|------|---------|-----|---------------------|
| 39 | 6221667 | 1 | screw |
| 40 | 0482342 | 1 | seal ring kit |
| 41 | 0482344 | 1 | seal ring kit |
| 42 | R700489 | 1 | plate -> 660094 |
| 43 | 7812424 | 1 | pin -> 660094 |

REEL CARRIER, RIGHT

| Fig. | P/n | QTY | Name |
|------|-----|-----|------|
|------|-----|-----|------|

Notes:

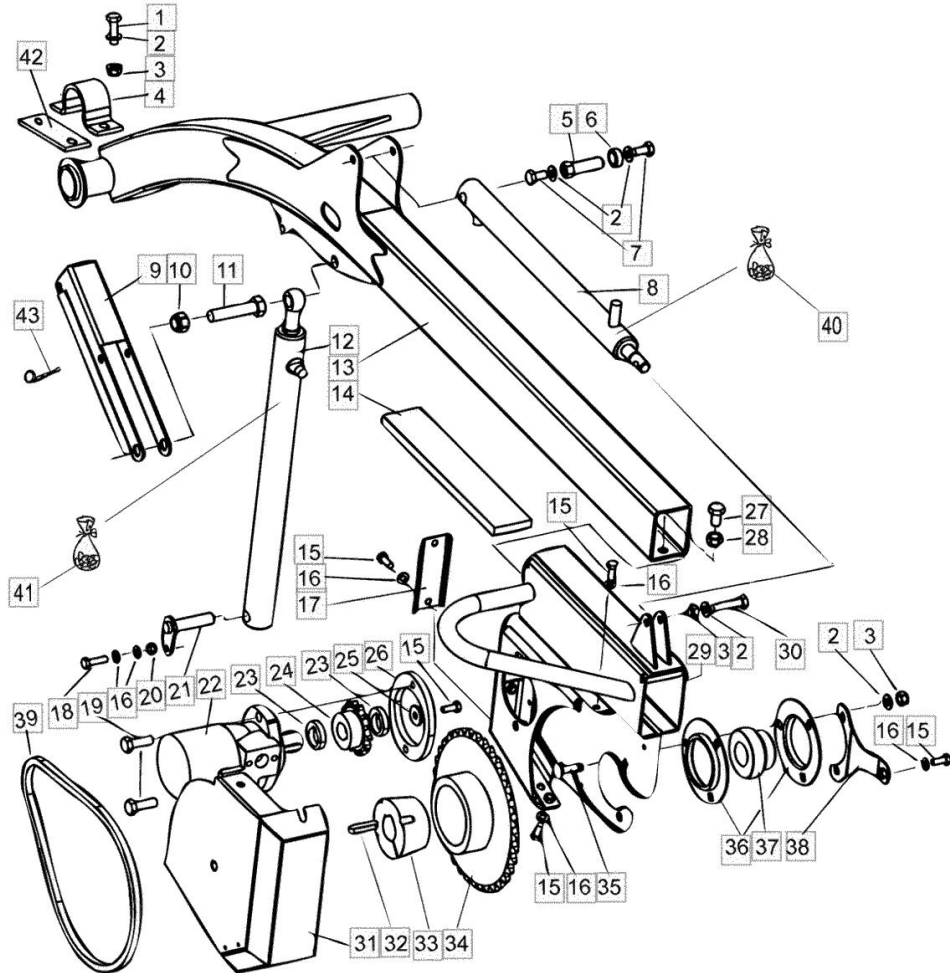
[5545H]



| | | | |
|----|---------|---|--------------------|
| 1 | 6226767 | 2 | screw |
| 2 | 7400033 | 4 | washer |
| 3 | 6594148 | 2 | nut |
| 4 | R671440 | 1 | bearing |
| 5 | R698990 | 1 | pin |
| 6 | R698997 | 1 | special bushing |
| 7 | 6226160 | 1 | screw |
| 8 | 0424349 | 1 | cylinder |
| 9 | R698982 | 1 | support |
| 10 | 6594438 | 1 | nut |
| 11 | 6242560 | 1 | screw |
| 12 | 0424347 | 1 | cylinder |
| 13 | R698958 | 1 | carrier dx/rh/re |
| 14 | 9698973 | 1 | plate |
| 15 | 6221260 | 1 | screw |
| 16 | 7400032 | 5 | washer |
| 17 | R698977 | 1 | cover |
| 18 | 6221667 | 1 | screw |
| 19 | 6231560 | 2 | screw |
| 20 | 6594048 | 1 | nut |
| 21 | R698984 | 1 | pin |
| 22 | 0424367 | 1 | new engine >100 kw |
| 23 | R698978 | 2 | spring washer |
| 24 | 0660056 | 1 | chain wheel |
| 25 | 7414057 | 1 | washer |
| 26 | R698976 | 1 | plate |
| 27 | 6230927 | 1 | screw |
| 28 | 6594238 | 1 | nut |
| 29 | R698956 | 1 | bearing dx/rh/re |
| 30 | 6227177 | 1 | screw |
| 31 | R698981 | 1 | guard |
| 32 | 7716125 | 1 | key |
| 33 | 0660058 | 1 | hub |
| 34 | 0660057 | 1 | chain wheel |
| 35 | 6763744 | 3 | screw |
| 36 | 0569323 | 2 | flange |
| 37 | 0511335 | 1 | bearing |
| 38 | R698989 | 1 | support |
| 39 | 0657116 | 1 | chain |
| 40 | 0482345 | 1 | seal ring kit |
| 41 | 0482343 | 1 | seal ring kit |

REEL CARRIER, RIGHT

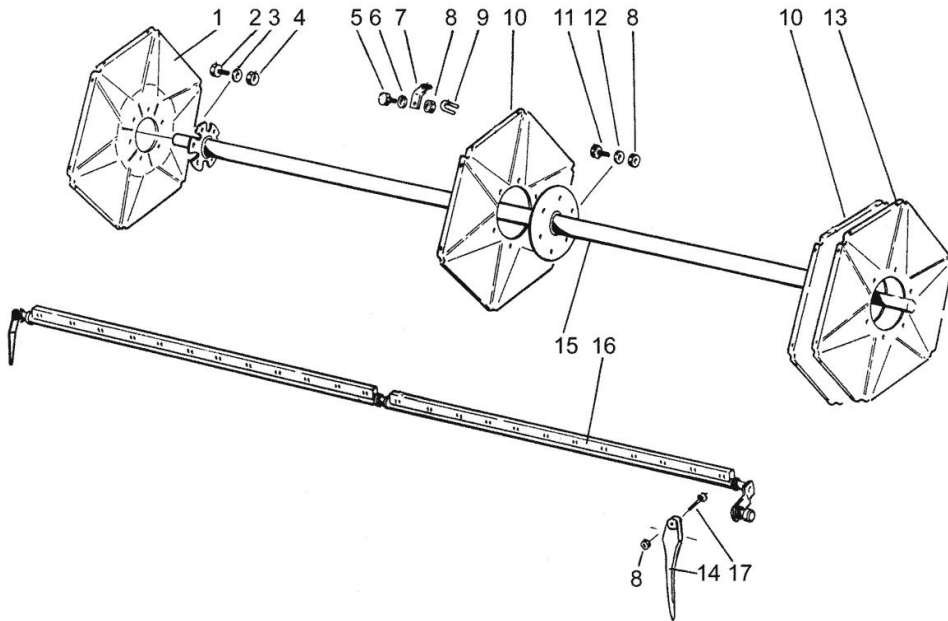
| Fig. | P/n | QTY | Name |
|------|---------|-----|---------------------|
| 42 | R700489 | 1 | plate -> 660094 |
| 43 | 7812424 | 1 | pin -> 660094 |



PICK-UP REEL 4,2M

| Fig. | P/n | QTY | Name |
|------|-----|-----|------|
|------|-----|-----|------|

Notes:
[5545H]



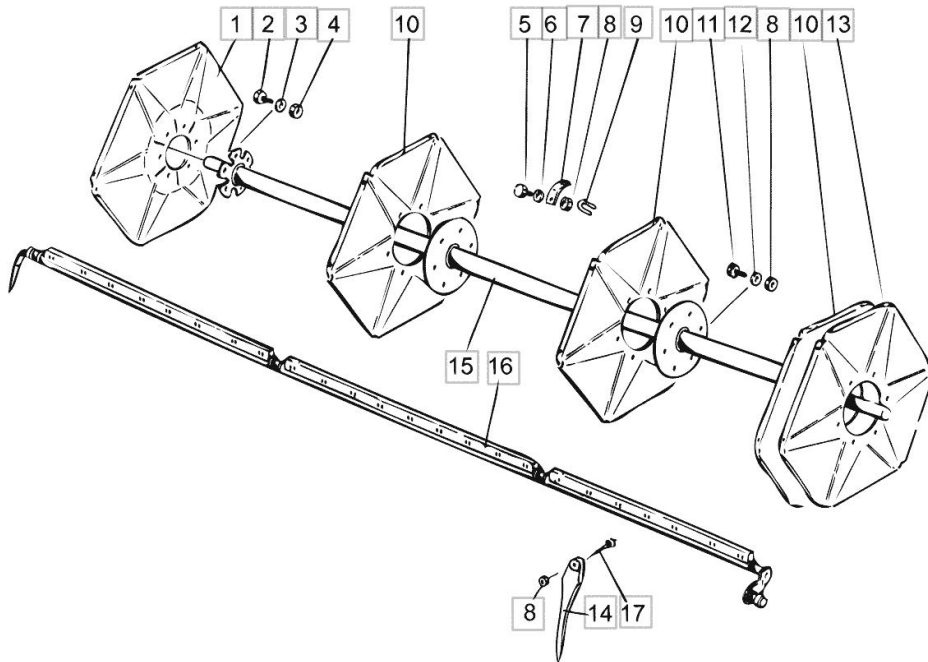
| | | | |
|----|---------|-----|----------------------|
| 1 | R683121 | 1 | disc |
| 2 | 6220867 | 12 | screw |
| 3 | 7400032 | 6 | washer |
| 4 | 6594038 | 6 | nut |
| 5 | 6211067 | 48 | screw |
| 6 | 7400030 | 48 | washer |
| 7 | R672223 | 24 | angular |
| 8 | 6593838 | 216 | nut |
| 9 | R672224 | 24 | clamp |
| 10 | R678094 | 2 | disc |
| 11 | 6210667 | 12 | screw |
| 12 | 7414055 | 12 | washer |
| 13 | R678095 | 1 | disc |
| 14 | 0633837 | 168 | spring |
| 15 | R698644 | 1 | injection pump shaft |
| 16 | R698638 | 1 | shaft |
| 17 | 6754314 | 168 | screw |

PICK-UP REEL 4,5M

| Fig. | P/n | QTY | Name |
|------|-----|-----|------|
|------|-----|-----|------|

Notes:
[5545H]

| | | | |
|----|---------|-----|----------------------|
| 1 | R683121 | 1 | disc |
| 2 | 6220867 | 12 | screw |
| 3 | 7400032 | 6 | washer |
| 4 | 6594038 | 6 | nut |
| 5 | 6211067 | 60 | screw |
| 6 | 7400030 | 60 | washer |
| 7 | R672223 | 30 | angular |
| 8 | 6593838 | 258 | nut |
| 9 | R672224 | 30 | clamp |
| 10 | R678094 | 3 | disc |
| 11 | 6210667 | 18 | screw |
| 12 | 7414055 | 18 | washer |
| 13 | R678095 | 1 | disc |
| 14 | 0633837 | 186 | spring |
| 15 | R698661 | 1 | injection pump shaft |
| 16 | R698647 | 6 | shaft |
| 17 | 6754314 | 186 | screw |

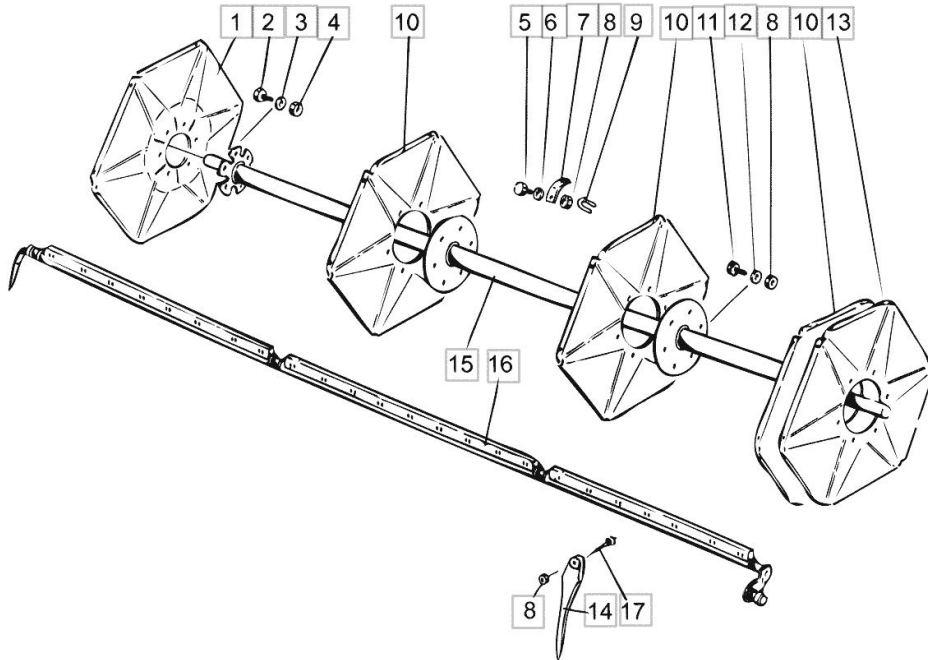


PICK-UP REEL 4,8M

| Fig. | P/n | QTY | Name |
|------|-----|-----|------|
|------|-----|-----|------|

Notes:
[5545H]

| | | | |
|----|---------|-----|----------------------|
| 1 | R683121 | 1 | disc |
| 2 | 6220867 | 12 | screw |
| 3 | 7400032 | 6 | washer |
| 4 | 6594038 | 6 | nut |
| 5 | 6211067 | 60 | screw |
| 6 | 7400030 | 60 | washer |
| 7 | R672223 | 30 | angular |
| 8 | 6593838 | 258 | nut |
| 9 | R672224 | 30 | clamp |
| 10 | R678094 | 3 | disc |
| 11 | 6210667 | 18 | screw |
| 12 | 7414055 | 18 | washer |
| 13 | R678095 | 1 | disc |
| 14 | 0633837 | 192 | spring |
| 15 | R698620 | 1 | injection pump shaft |
| 16 | R698612 | 6 | shaft |
| 17 | 6754314 | 192 | screw |

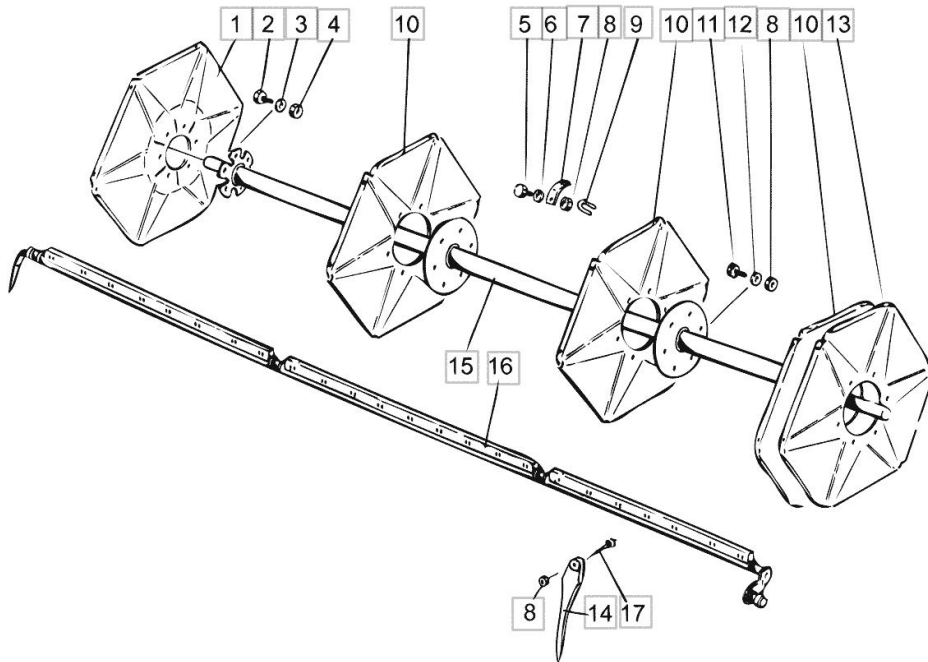


PICK-UP REEL 5,1M

| Fig. | P/n | QTY | Name |
|------|-----|-----|------|
|------|-----|-----|------|

Notes:
[5545H]

| | | | |
|----|---------|-----|----------------------|
| 1 | R683121 | 1 | disc |
| 2 | 6220867 | 12 | screw |
| 3 | 7400032 | 6 | washer |
| 4 | 6594038 | 6 | nut |
| 5 | 6211067 | 60 | screw |
| 6 | 7400030 | 60 | washer |
| 7 | R672223 | 30 | angular |
| 8 | 6593838 | 258 | nut |
| 9 | R672224 | 30 | clamp |
| 10 | R678094 | 3 | disc |
| 11 | 6210667 | 18 | screw |
| 12 | 7414055 | 18 | washer |
| 13 | R678095 | 1 | disc |
| 14 | 0633837 | 210 | spring |
| 15 | R698667 | 1 | injection pump shaft |
| 16 | R698664 | 6 | shaft |
| 17 | 6754314 | 210 | screw |



Thank you so much for reading.
Please click the “Buy Now!”
button below to download the
complete manual.



After you pay.

You can download the most
perfect and complete manual in
the world immediately.

Our support email:

ebooklibonline@outlook.com