

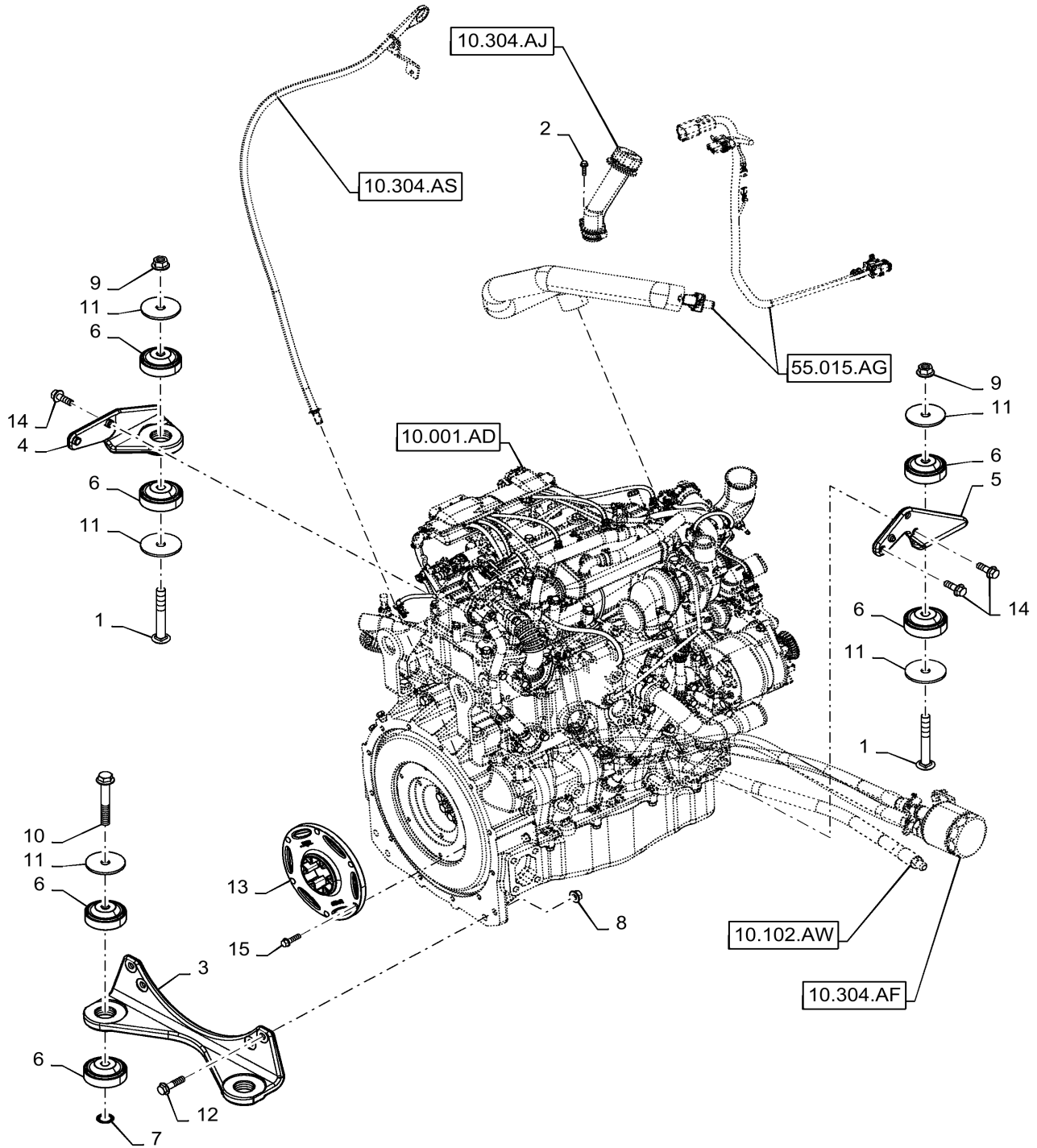
TR340 Compact Track Loader Tier 4B

Parts Catalog

Print No. 550711123
Issued 12/2015



ENGINE MOUNT



ENGINE MOUNT

REF FN	PART NUMBER	YR/SN	QTY DESCRIPTION
1	300663		2 CARRIAGE BOLT M16 x 2.0 x 120mm, CI 8.8
2	9804257		2 FLANGE BOLT Hex, M6 x 1 x 25mm, Full Thd, CI 8.8
3	47674750		1 MOUNT Front, Engine
4	47745326		1 MOUNT RH, Engine
5	47745327		1 MOUNT LH, Engine
6	84201266		8 ISOLATOR 16mm ID x 80mm OD x 41.5mm Thk Engine Mount
7	84367737		2 LOCK WASHER 22.6mm OD x 1.27mm Thk
8	86512497		4 FLANGE NUT M12 - 1.75, CI 10
9	86512498		2 FLANGE NUT M16 x 2.0, CI 10
10	87015923		2 BOLT M16 x 125.4mm, CI 10.9
11	87630175		6 WASHER 0.66" ID x 3" OD x 0.18" Thk
12	87670764		4 BOLT M12 x 61.8mm, CI 10.9
13	87692685		1 FLEXIBLE COUPLING 215.9mm OD 6 - 1/2" Holes, Plate Outline
14	87695414		5 BOLT M12 x 46.8mm, CI 10.9
15	9804260		6 BOLT Hex, M8 x 1.25 x 30mm, Full Thd, CI 8.8 Flexible Coupling, Mounting

TR340-COMPACT TRACK LOADER - TIER 4B

Thank you so much for reading.
Please click the “Buy Now!”
button below to download the
complete manual.



After you pay.

You can download the most
perfect and complete manual in
the world immediately.

Our support email:

ebooklibonline@outlook.com