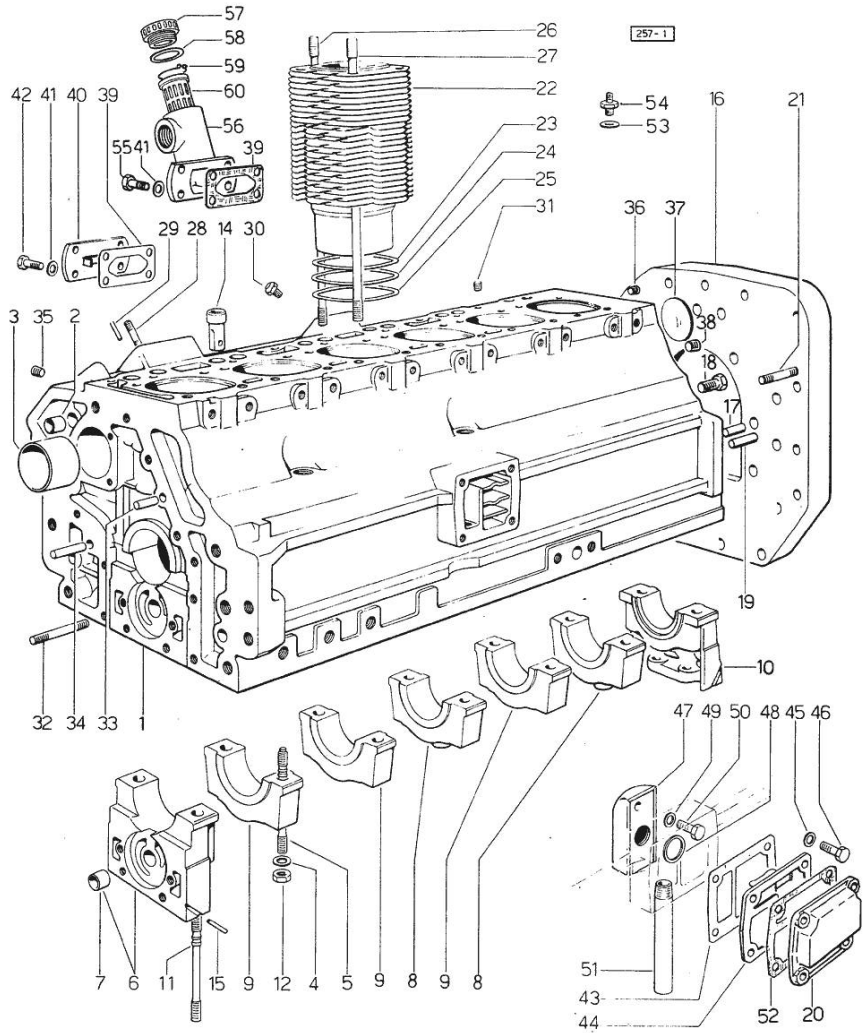


Section: ENGINE  
CRANKCASE

Fig.	P/n	QTY	Name
------	-----	-----	------

Notes:  
[GALAXI 170]

0	0.071.0050.6	1	gasket set
1	0.071.1110.4/30	1	crankcase
2	2.1559.111.0/20	2	special bushing
3	0.037.1155.0	1	bushing
4	2.1599.318.7	14	flat washer
5	0.052.1150.0	10	stud bolt
6	0.071.1112.3	1	support
7	2.1559.090.0/10	1	bushing 14.24x19.06x27
8	0.052.1113.0	2	support
9	0.052.1113.0	3	support
10	0.052.1116.0	1	support
11	0.052.1151.0	4	stud bolt
12	2.1099.064.7	14	special nut
14	0.044.1156.0	12	special bushing
15	0.029.1154.0/10	4	gasket
16	0.071.1150.0	1	flange
17	2.1651.911.0	2	cylindrical plug
18	2.0112.513.2	11	screw m 14 p.2 x 35
19	2.1653.708.0	2	pin 8x18
20	0.071.1154.0	1	small cover
21	2.0432.257.7	2	stud bolt m 12 p.1.75 - 1.25 x 30
22	0.071.1120.0/50	6	engine cylinder
23	2.1589.052.0	12	shoulder ring 115x123x0.2
24	2.1589.051.0	6	shoulder ring 116x123x0.1
25	2.1569.076.0	6	gasket 116x123x0.5
26	0.041.1123.0/10	6	stud bolt
27	0.039.1122.0	24	stud bolt m 12 p.1.5x310
28	2.0432.003.7	8	stud bolt m 8 p.1.25 / p.1 x 20
29	2.1651.306.0	2	cylindrical plug
30	0.074.1151.3/10	6	valve
31	2.3130.001.1	3	plug 1/8" gas
32	2.0432.025.7	2	stud bolt m 8 p.1.25 - 1.00 x 100
33	2.1651.711.0	1	pin 8 x 14
34	2.1699.114.0	1	pin 8x55
35	2.3139.001.1	5	plug
36	2.3130.002.1	1	plug 1/4" gas
37	2.3170.022.1	1	expansion plug 60
38	2.3130.003.1	2	plug 3/8" gas
39	0.044.1151.0	2	gasket
40	0.044.1164.2/10	1	small cover
41	2.1310.004.2	4	flat washer 8.4x17



Section: ENGINE  
CRANKCASE

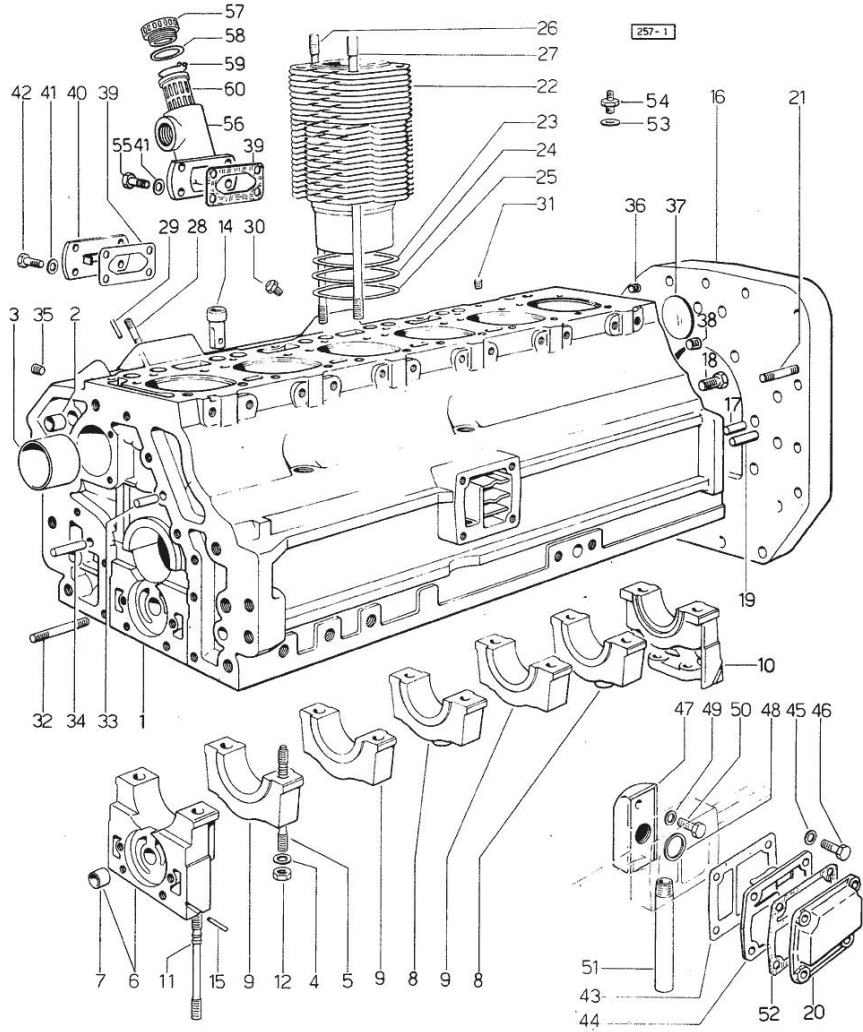


Fig.	P/n	QTY	Name
42	2.0112.204.2	2	screw m 8 p.1.25x14
43	0.044.1153.0/10	1	gasket
44	0.071.1153.0	1	small cover
45	2.1474.009.2	4	spring washer 8
46	2.0112.211.2	4	screw m 8 p.1.25 x 30
47	0.044.1155.2/20	1	cover (...) <-
47	0.071.1155.2	1	small guard (...) <-
48	0.071.1156.0	1	special oil seal
49	2.1480.014.1	1	washer 8
50	2.0312.206.2	1	screw m 8 p 1.25 x 20
51	0.044.1152.0/10	1	tube
52	0.044.1153.0/10	1	gasket (...) <-
52	0.044.1161.0	1	gasket (...) <-
53	2.1560.006.0	2	gasket 10.2 x 16
54	0.054.1150.0	2	pipe fitting
55	2.0112.204.2	2	screw m 8 p.1.25x14
55	2.0112.209.2	4	screw m 8 p 1.25 x 25
55	2.0112.211.2	2	screw m 8 p.1.25 x 30
56	0.062.1150.0/10	1	pipe union 1199 <-
56	0.062.1151.0	1	flange -> 1200
57	0.041.1135.4	1	plug 1" gas
58	2.1569.072.0	1	gasket 32 x 39.5 x 2
59	2.1411.012.1	1	circlip 30
60	0.041.1159.0/10	1	filter

Section: ENGINE  
TIMING CASE

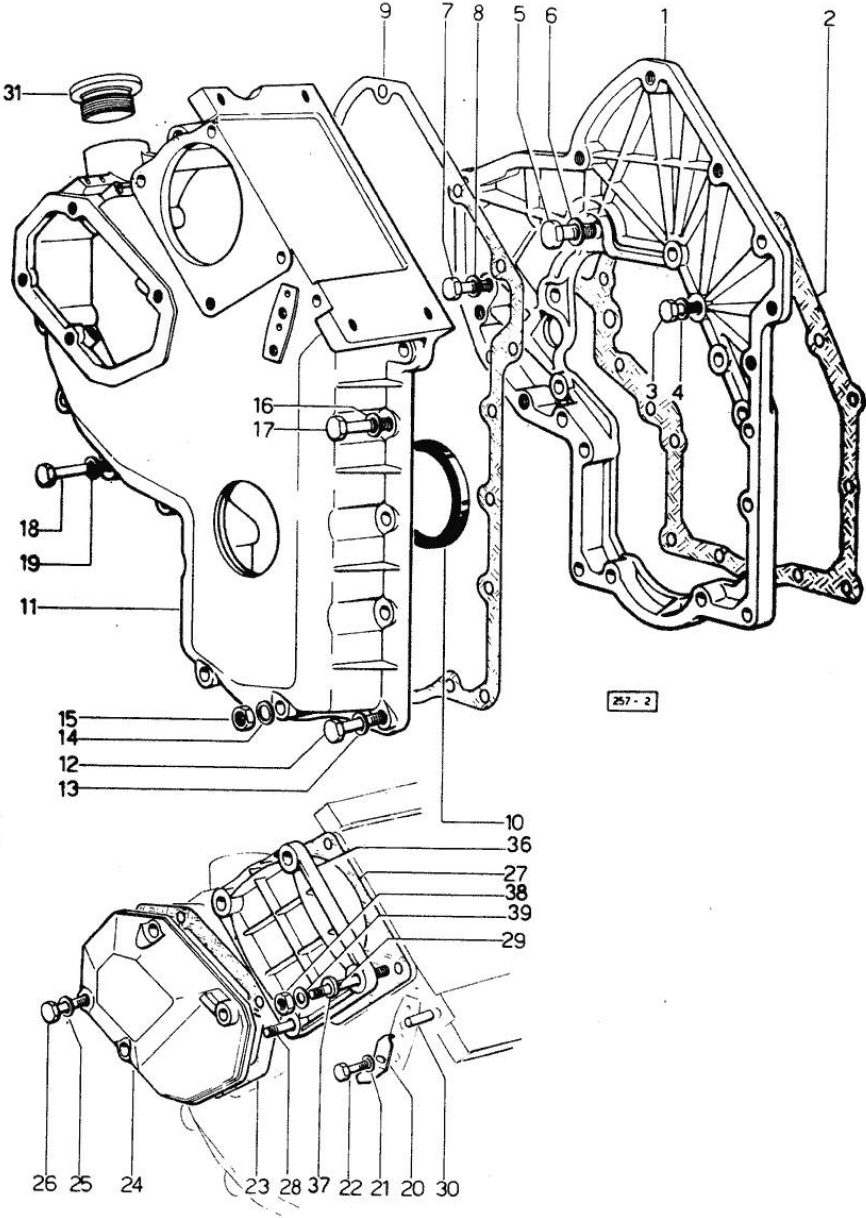


Fig.	P/n	QTY	Name
<b>Notes:</b> [GALAXI 170]			
1	0.048.1131.0	1	flange
2	2.1799.002.0	1	stick 10x13
3	2.0112.209.2	5	screw m 8 p 1.25 x 25
4	2.1480.014.1	5	washer 8
5	2.0119.034.2	1	screw m 14 p.2x20
6	2.1560.010.0	1	gasket 14.2 x 20
7	2.0112.207.2	1	screw m 8 p 1.25 x 20
8	2.1480.014.1	1	washer 8
9	0.041.1152.0/10	1	gasket
10	2.1519.010.0	1	special oil seal 58x80x10
11	0.048.1132.0/40	1	guard
12	2.0112.217.2	5	screw m 8 p.1.25 x 45
13	2.1480.014.1	5	washer 8
14	2.1560.003.0	2	copper gasket 8.2 x 12
15	2.1011.405.2	2	nut m 8 p.1
16	2.1480.014.1	2	washer 8
17	2.0112.211.2	2	screw m 8 p.1.25 x 30
18	2.0112.222.2	2	screw m 8 p.1.25x65
18	2.0119.107.2	2	screw m 8 p.1.25 x 85
19	2.1480.014.1	4	washer 8
20	0.041.1158.0	1	index
21	2.1310.004.2	1	flat washer 8.4x17
22	2.0112.204.2	1	screw m 8 p.1.25x14
23	0.048.1151.0/10	1	gasket
24	0.048.1150.0/20	1	cover
25	2.1560.006.0	4	gasket 10.2 x 16
26	2.0112.315.2	4	screw m 10 p.1.5 x 40
27	0.041.1154.0	1	gasket
28	2.0432.013.7	1	stud bolt m 8 p.1.25 / p.1 x 45
29	2.0432.028.7	3	stud bolt m 8 p.1.25-1x130
30	2.1653.717.0	1	pin 8 x 40
31	2.3199.002.2	1	plug 1 gas
36	0.037.1151.0/10	1	cover
37	2.1579.191.2	3	spacer 8.5 x 18 x 20
38	2.1011.405.2	4	nut m 8 p.1
39	2.1310.004.2	4	flat washer 8.4x17

Section: ENGINE  
**CRANKSHAFT**

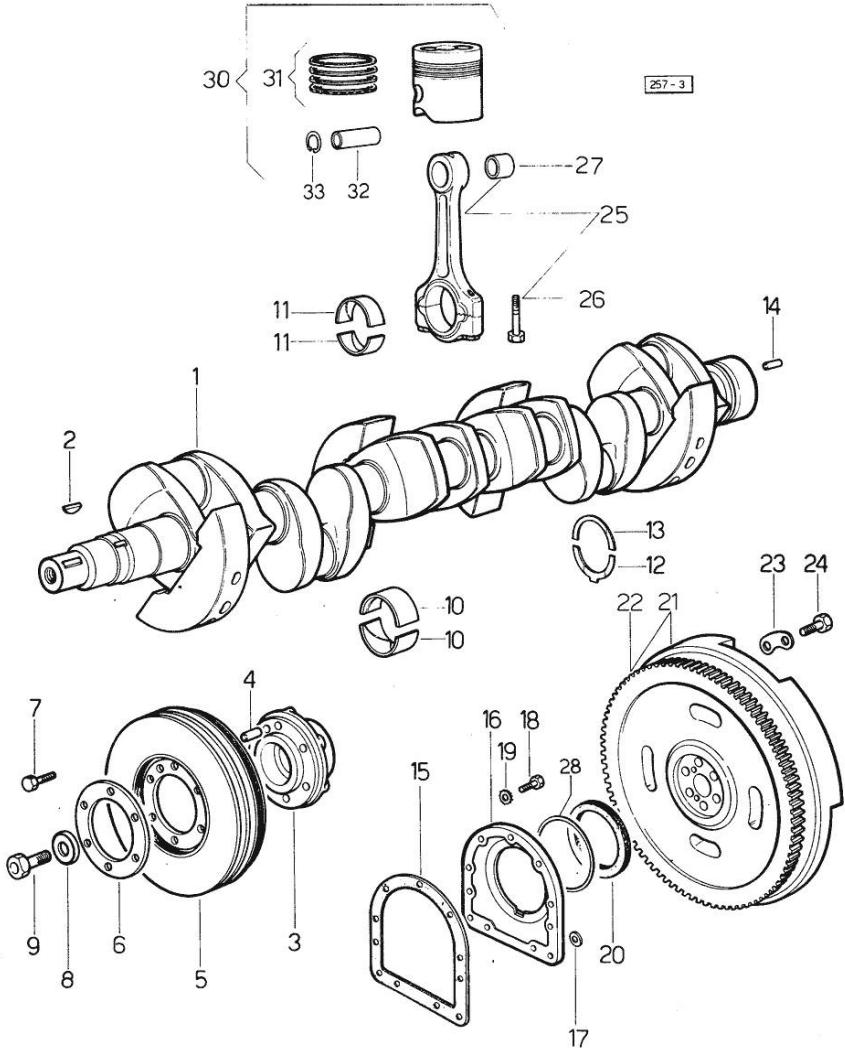


Fig.	P/n	QTY	Name
<b>Notes:</b>			
[GALAXI 170]			
1	0.037.1210.4/30	1	crankshaft
2	2.1799.002.0	1	stick 10x13 1199 <=
2	2.1799.026.0	1	key 10x10 => 1200
3	0.037.1250.0/10	1	hub
4	2.1651.911.0	1	cylindrical plug
5	0.071.1246.3/10	1	antivibration pulley
6	0.037.1255.0	1	flange
7	2.0122.461.2	6	screw m 12 p.1.25x30
8	0.001.6020.0	1	shoulder
9	2.0129.032.2	1	screw m 24 p.2x45
10	0.073.0059.0	14	main half bushing - mm 1.00
10	0.073.1215.0	14	main half bushing STANDARD
10	0.073.1215.7	14	main half bushing - mm 0.25
10	0.073.1215.8	14	main half bushing - mm 0.50
10	0.073.1215.9	14	main half bushing - mm 0.75
11	0.062.0059.0	12	con.rod half bushing - mm 1.00
11	0.062.1225.0	12	con.rod half bushing STANDARD
11	0.062.1225.7	12	con.rod half bushing - mm 0.25
11	0.062.1225.8	12	con.rod half bushing - mm 0.50
11	0.062.1225.9	12	con.rod half bushing - mm 0.75
12	0.001.4547.0	2	shoulder ring + mm 0.05
12	0.001.4548.0	2	shoulder ring + mm 0.10
12	0.001.4549.0	2	shoulder ring + mm 0.15
12	0.042.1219.0	2	shoulder ring STANDARD
13	0.001.4544.0	2	shoulder ring + mm 0.05
13	0.001.4545.0	2	shoulder ring + mm 0.10
13	0.001.4546.0	2	shoulder ring + mm 0.15
13	0.042.1218.0	2	shoulder ring STANDARD
14	2.1651.915.0	2	pin 12x35
15	0.029.1250.0/10	1	gasket
16	0.029.1240.0/10	1	flange 1110 <-
16	0.045.1240.0	1	flange -> 1111
17	2.1560.006.0	2	gasket 10.2 x 16
18	2.0112.309.2	11	screw m 10 p.1.5 x 25
19	2.1474.010.2	1	washer 10
19	2.1480.015.1	7	washer 10
20	2.1519.009.0/10	1	special oil seal

Section: ENGINE  
**CRANKSHAFT**

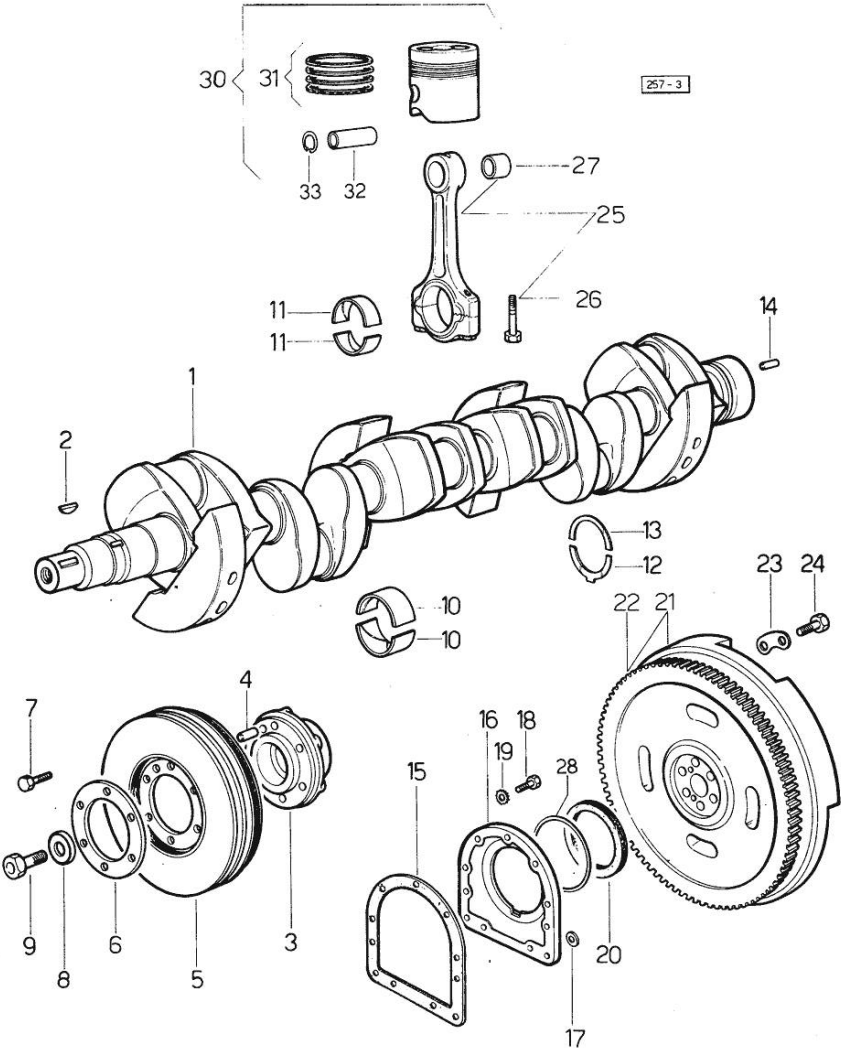


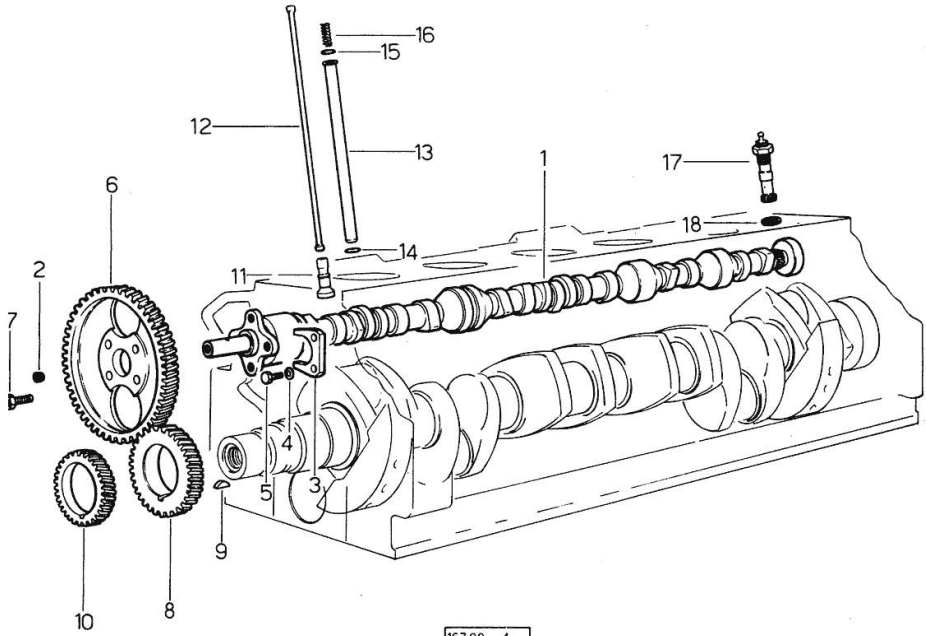
Fig.	P/n	QTY	Name
21	0.046.1256.3	1	flywheel
22	0.047.1242.0	1	crown wheel z=128
23	2.1379.006.0	3	lock-tab 15x15x36,5
24	2.0122.517.7	6	screw m 14 p.1.5x45
25	0.039.1220.3/30	6	engine connecting rod
26	0.039.1250.0	12	screw m 14 p.1.5x63
27	2.1559.114.0/10	6	special bushing
28	2.1599.404.0	1	shoulder ring
30	0.052.0060.6/30	6	complete piston STANDARD
30	0.052.0061.6/30	6	complete piston + mm 0.50
30	0.052.0062.6/30	6	complete piston + mm 1.0
31	0.071.0052.6/30	6	piston ring set
31	0.071.0053.6/30	6	piston ring set + mm 0.50
31	0.071.0054.6/30	6	piston ring set + mm 1.0
32	0.038.1236.0/10	6	piston pin Ø 18 / Ø 35 / L = mm 90
33	2.1411.014.1	12	circlip 35

Section: ENGINE  
CAMSHAFT

Fig.	P/n	QTY	Name
------	-----	-----	------

Notes:  
[GALAXI 170]

1	0.071.1310.0	1	camshaft
2	2.3130.001.1	1	plug 1/8" gas
3	0.027.1314.0/20	1	flange
4	2.1470.004.2	2	lock washer 8
5	2.0112.207.2	2	screw m 8 p 1.25 x 20
6	0.062.1321.0	1	gear z=66
7	2.0139.005.1	4	screw m 10 p.1 x 25
8	0.040.1320.0	1	gear z = 33
9	2.1720.010.0	1	key 5x9
10	0.040.1323.0/10	1	gear Z = 38
11	0.052.1330.0/20	12	tappets
12	0.052.1331.3	12	rod
13	0.041.1332.0	12	sleeve
14	2.1539.020.0	12	special oil seal 13.95x2.62
15	2.1539.022.0	12	special oil seal 12.37x2.62
16	2.4019.162.1/20	12	spring 17.2x46x1.8
17	0.041.1355.3	1	transmission
18	2.1560.014.0	1	washer 18.2 x 24



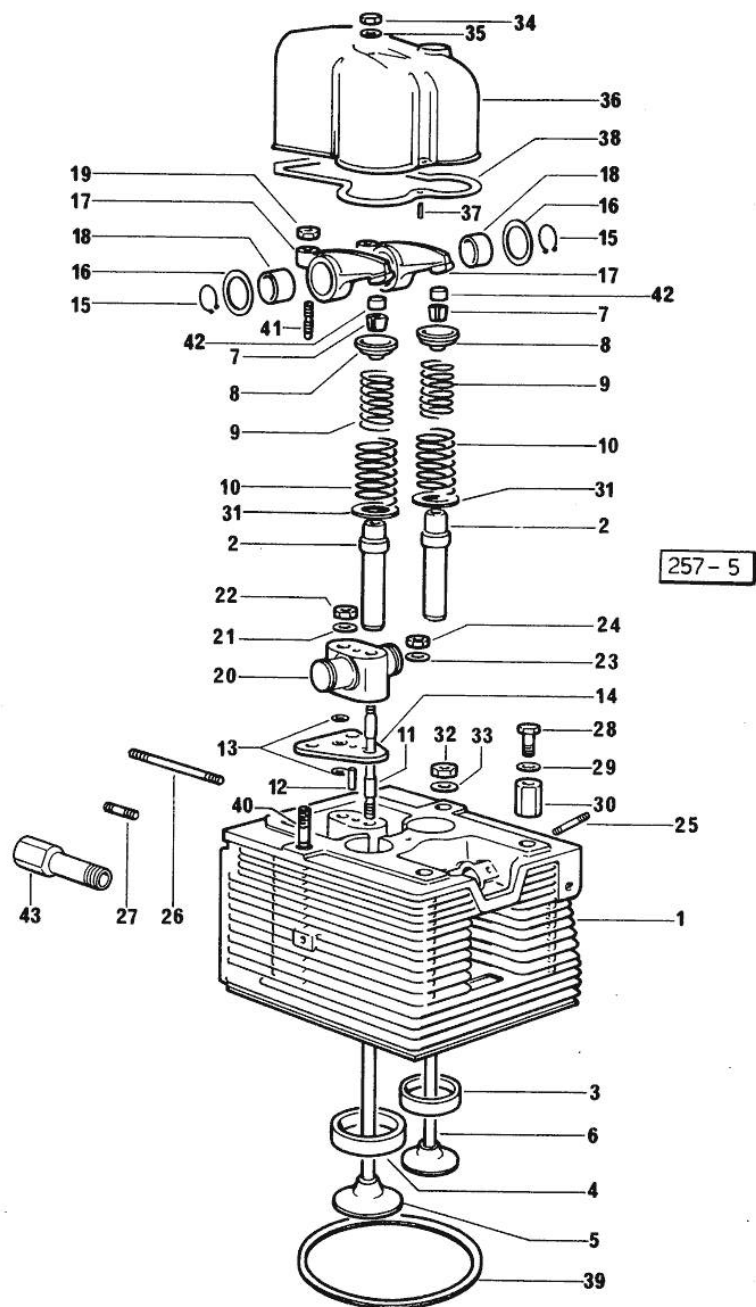
167.00 - 4

Section: ENGINE  
CYLINDER HEAD

Fig.	P/n	QTY	Name
------	-----	-----	------

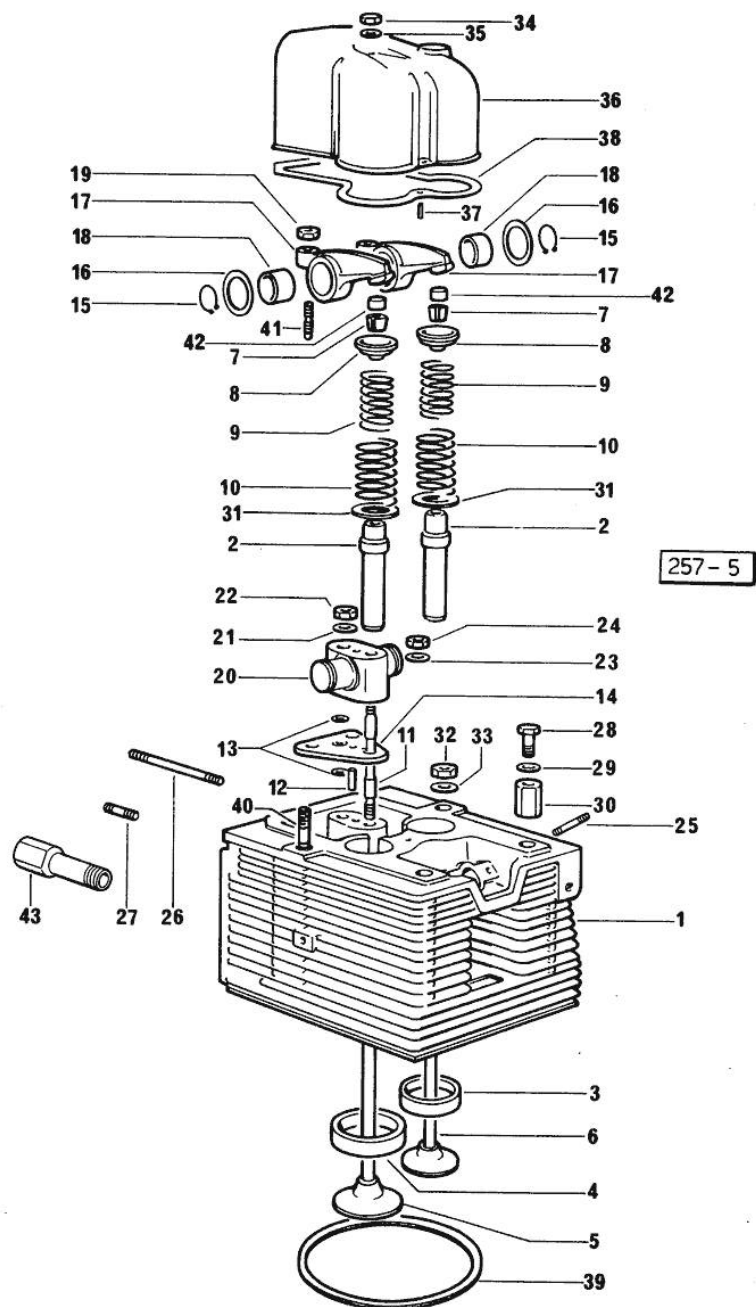
Notes:  
[GALAXI 170]

0	0.071.0057.6	1	gasket set
1	0.071.1410.3	5	engine head 1260 <-
1	0.071.1410.3/20	5	engine head -> 1261
1	0.071.1411.3	1	engine head 1260 <- - FOR TRANSMITTER ASSEMBLY
1	0.071.1411.3/20	1	engine head -> 1261 - FOR TRANSMITTER ASSEMBLY
2	0.006.1952.0	12	valve guide
3	0.052.1452.0	6	valve seat
4	0.052.1451.0/10	6	valve seat
5	0.009.7264.2	6	inlet valve Ø mm 9 -> 1261
5	0.071.1420.2	6	exhaust valve Ø mm 8 1260 <-
6	0.071.1421.2	6	exhaust valve Ø mm 8 1260 <-
6	0.074.1421.2/20	6	- -> 1261
7	0.062.1423.0/10	12	conical valve cotter 1260 <-
7	0.074.1423.0	12	conical valve cotter -> 1261
8	0.002.9215.0/20	12	cup -> 1261
8	0.062.1425.0	12	cup 1260 <-
9	2.4019.279.7	12	spring
10	2.4019.280.7	12	spring
11	0.052.1455.0	6	stud bolt
12	2.1651.509.0	6	pin 6x20
13	2.1532.035.0	12	oil seal 14x1.78
14	0.052.1454.0	6	small plate
15	2.1410.055.7	12	circlip 19
16	2.1599.019.0	12	shoulder ring 19.5x31x2
17	0.052.1432.3/10	12	rocker arm
18	2.1559.021.0/40	2	bushing 15x19x22
19	2.1011.405.2	12	nut m 8 p.1
20	0.052.1430.0	6	support
21	2.1310.006.2	6	flat washer 10.5x21



Section: ENGINE  
CYLINDER HEAD

Fig.	P/n	QTY	Name
22	2.1099.035.0	6	special nut m 10 p.1.25
23	2.1599.160.0	6	washer 10.5x19x4
24	2.1011.421.2	6	nut m 10 p.1.25
25	2.0439.111.1/20	12	stud bolt
26	2.0439.113.7	6	stud bolt m 8 p.1.25 - 1.00 x 110
26	2.0439.143.7	5	stud bolt m 8 p.1.25 x 90
26	2.0439.157.7	6	stud bolt m 8 p.1.25 - 1.00 x 100
27	2.0439.110.7	2	stud bolt m 8 x 30 -> 1200
28	2.0119.053.1	4	screw
29	2.1310.007.2	4	flat washer 13 x 24
30	2.1019.037.0	4	special nut m 12 p.1.5
31	2.1599.411.2	12	shoulder ring
32	2.1019.025.0	20	special nut m 12 p.1.5
33	2.1599.144.7	24	shoulder ring 12.5x23x4
34	2.1099.056.2	6	special nut m 8 p.1 x 8
35	2.1560.004.0	6	copper gasket 8.2 x 14
36	0.052.1440.0	6	small cap
37	2.1630.208.0	6	roll pin 3x16
38	0.052.1453.0/20	6	tappet gasket
39	2.1589.157.0	6	shoulder ring
40	2.0439.169.7	4	stud bolt
41	0.021.1434.0	12	screw
42	0.062.1452.0	12	small cover
43	0.071.1450.0/10	1	pipe fitting



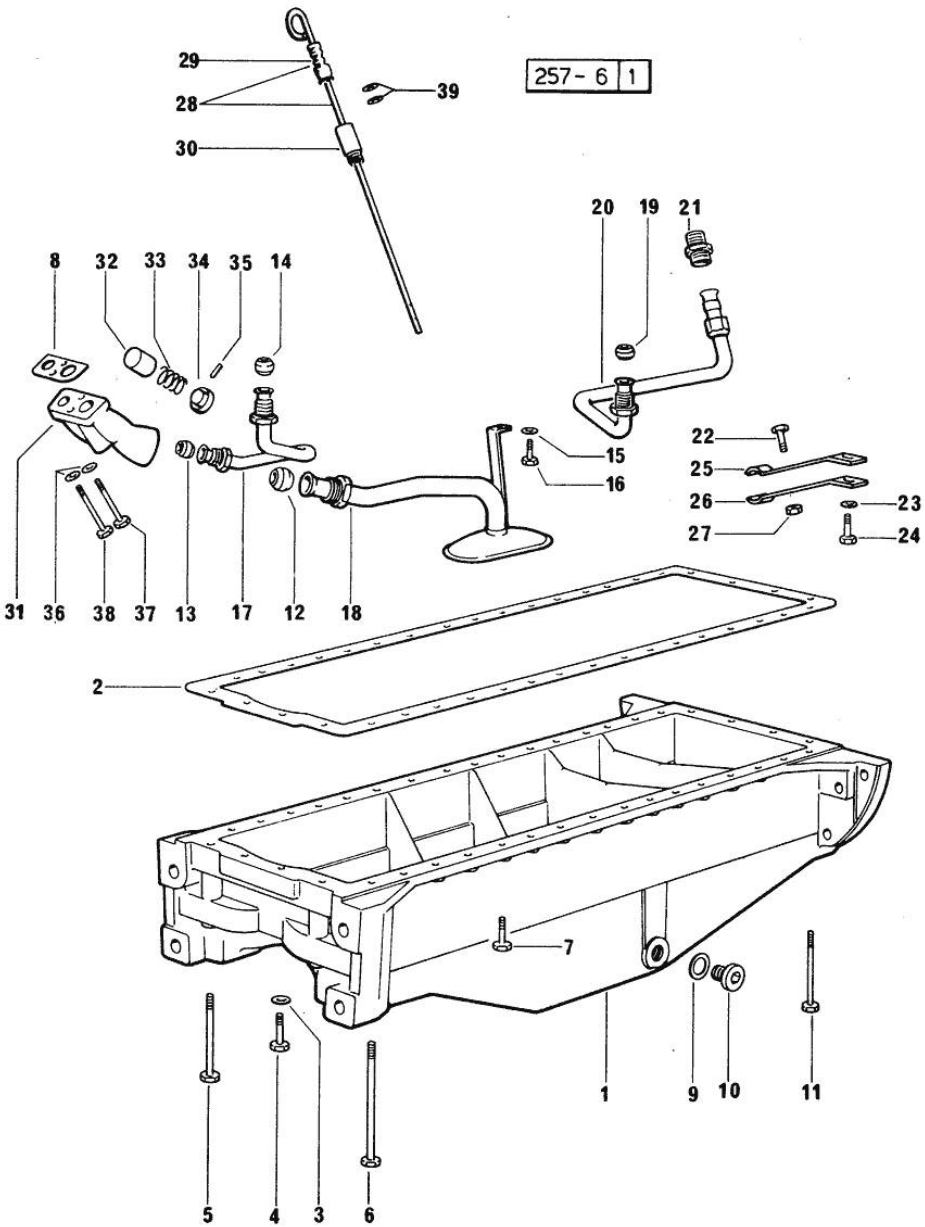


Section: ENGINE  
LUBRICATION

Fig.	P/n	QTY	Name
------	-----	-----	------

Notes:  
[GALAXI 170]

1	0.071.1510.0	1	oil sump
2	0.037.1512.0	1	gasket
3	2.1560.004.0	4	copper gasket 8.2 x 14
4	2.0112.217.2	2	screw m 8 p.1.25 x 45
5	2.0112.231.2	2	screw m 8 p.1.25 x 110
6	2.0112.244.2	2	screw m 8 p.1.25 x 180
7	2.0112.215.2	30	screw m 8 p.1.25 x 40
8	0.037.1557.0/20	1	gasket
9	2.1560.054.0	1	gasket 21 x 26
10	2.3199.001.2	1	plug 1/2" gas
11	2.0112.237.2	4	screw m 8 p.1.25x140
12	2.3359.017.1	1	nosepiece
13	2.3359.016.1	1	nosepiece
14	2.3359.015.1	1	nosepiece
15	2.1310.004.2	1	flat washer 8.4x17
16	2.0112.204.2	1	screw m 8 p.1.25x14
17	0.044.1560.2	1	tube
18	0.046.1531.3	1	tube
19	2.3359.015.1	1	nosepiece
20	0.046.1543.2/10	1	tube
21	2.3339.159.1/10	1	pipe fitting
22	2.0112.207.2	1	screw m 8 p 1.25 x 20
23	2.1310.004.2	1	flat washer 8.4x17
24	2.0112.207.2	1	screw m 8 p 1.25 x 20
25	0.046.1551.0	1	bracket
26	0.046.1550.0	1	bracket
27	2.1011.105.2	1	nut m 8 p.1.25
28	0.042.1513.2	1	dipstick
29	0.034.1551.0	1	gasket
30	0.044.1555.0	1	spacer
31	0.052.1530.0	1	tip
32	0.052.1571.0	1	small piston
33	2.4019.270.1	1	spring 9.7x54x2
34	0.054.1558.0/20	1	stop
35	2.1630.213.0	1	roll pin 3x32
36	2.1480.014.1	2	washer 8
37	2.0112.225.2	1	screw m 8 p.1.25 x 80
38	2.0112.231.2	1	screw m 8 p.1.25 x 110
39	2.1539.065.0	2	special oil seal 8.73 x 1.78

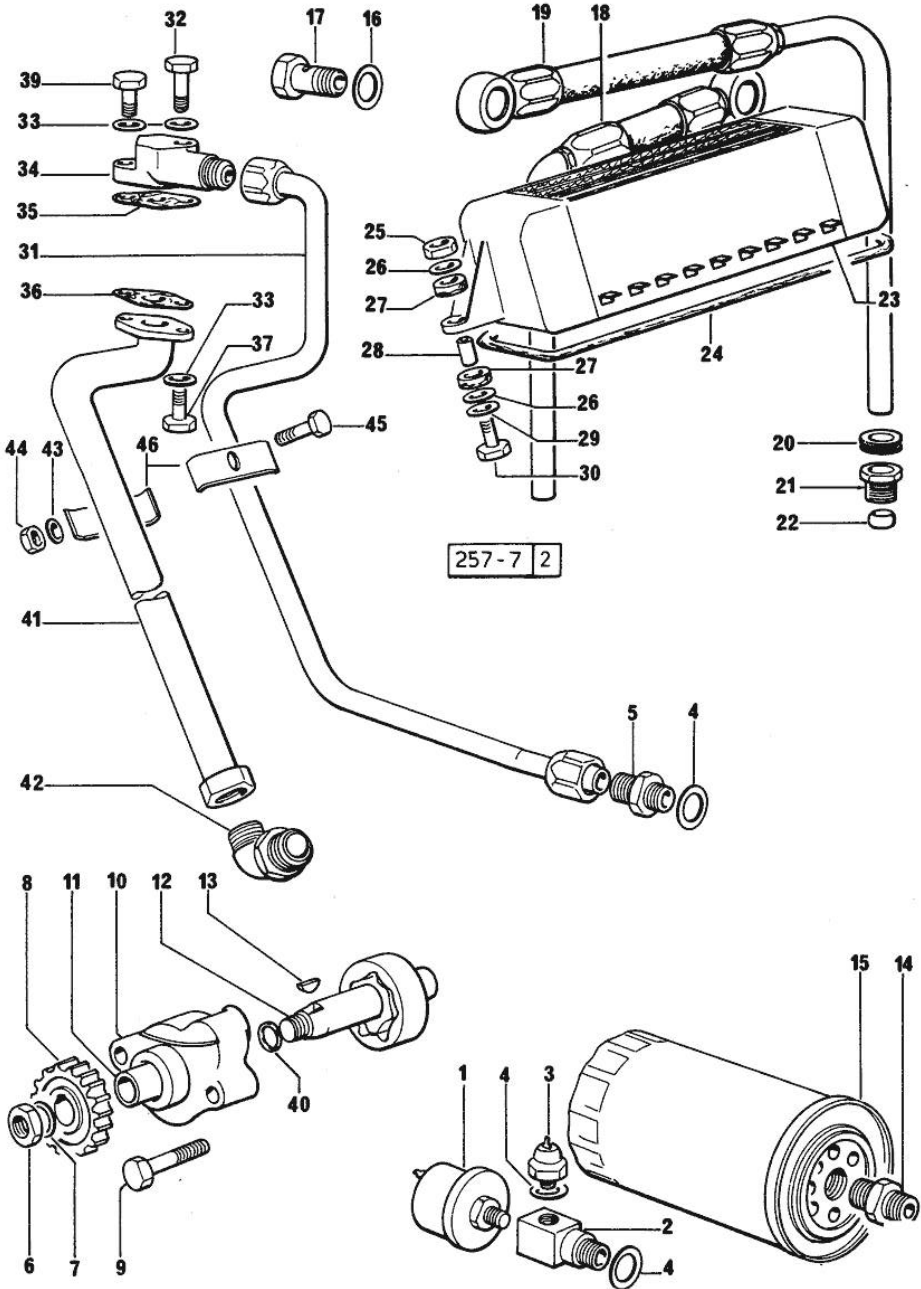


Section: ENGINE  
LUBRICATION

Fig.	P/n	QTY	Name
------	-----	-----	------

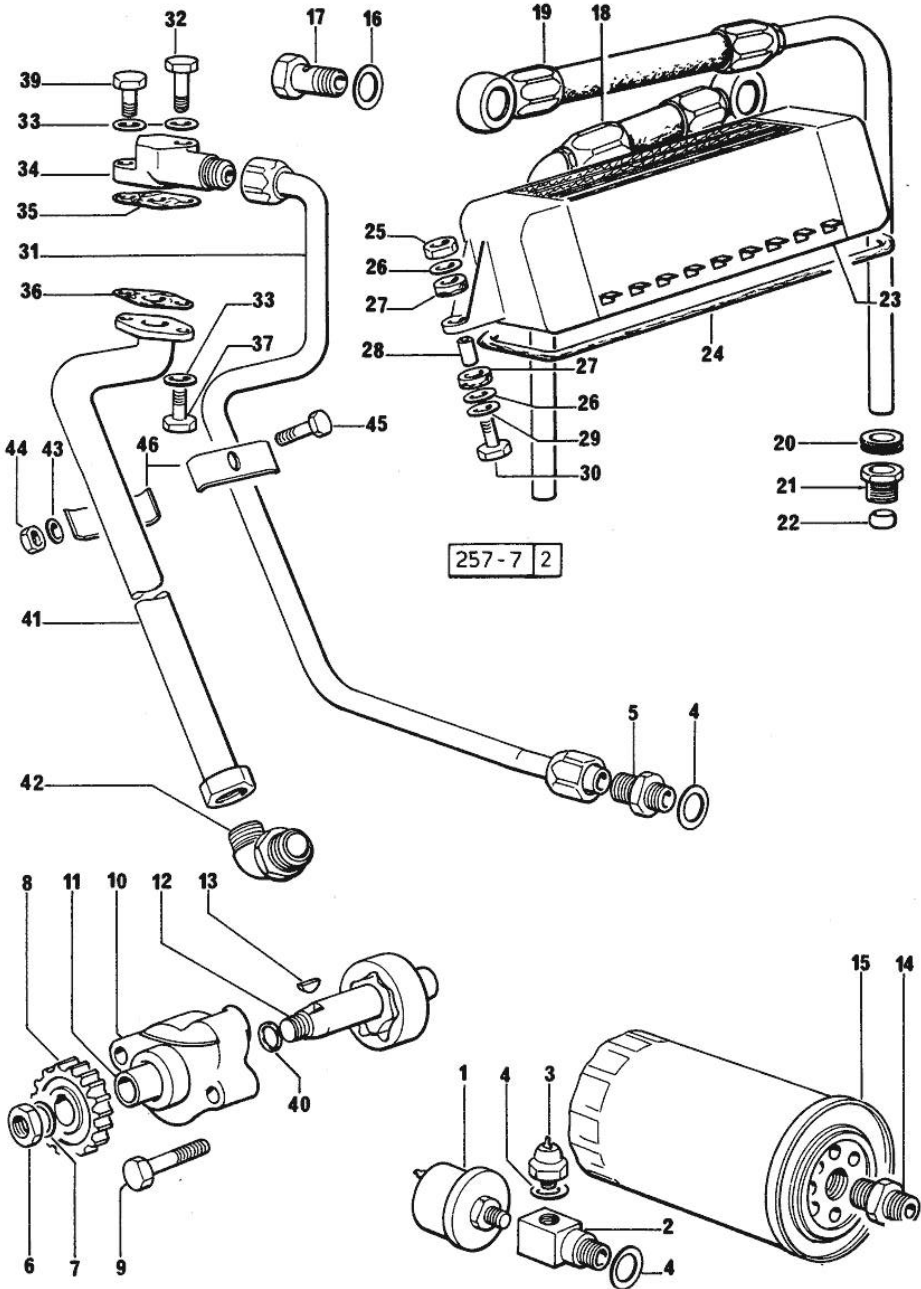
Notes:  
[GALAXI 170]

1	2.7099.270.0	1	device
2	0.071.1554.0	1	pipe fitting
3	2.7099.460.0	1	pressure switch
4	2.1560.008.0	3	gasket 12.2 x 18
5	2.3339.214.2	1	pipe fitting
6	2.1121.109.2	1	self-locking nut m 12 p.1.25
7	2.1310.007.2	1	flat washer 13 x 24
8	0.040.1521.0/10	1	gear z = 27
9	2.0112.219.2	2	screw m 8 p.1.25x55
10	0.071.1524.6	1	oil pump
11	2.1559.166.0	1	special bushing
12	0.071.1524.6	1	oil pump
13	2.1720.005.0	1	key 4x5
14	2.3339.094.1/10	1	pipe fitting m 20 p.1.5-3/4 gas
15	0.052.1565.0	1	oil filter element
16	2.1560.018.0	6	gasket 22.2 x 29
17	2.3339.107.1	2	pipe union m 22
18	0.071.1555.2	1	tube
19	0.071.1556.2/10	1	tube
20	2.6560.013.0	2	wire guide 18x1.5
21	2.3339.167.2	2	pipe fitting
22	2.3359.012.0	2	nosepiece 10x16.8
23	0.074.1540.2	1	oil cooler
24	0.052.1541.0	1	gasket
25	2.1011.105.2	2	nut m 8 p.1.25
26	2.1599.006.2	4	shoulder ring 8.4x25x2
27	0.021.1560.0	4	rubber plug
28	2.1579.159.2	2	spacer 8.8x12x16
29	2.1310.004.2	2	flat washer 8.4x17
30	2.0122.213.2	2	screw m 8 p.1x35
31	0.071.1550.2/10	1	tube 1167 <-
31	0.071.1558.2	1	tube => 1200 - (...) <=
31	0.071.1558.2/10	1	tube (...) <-
31	0.074.1550.2	1	tube -> 1168 1199 <=
32	2.0112.213.2	1	screw m 8 p.1.25 x 35
33	2.1470.004.2	4	lock washer 8
34	0.062.1550.0	1	flange



Section: ENGINE  
LUBRICATION

Fig.	P/n	QTY	Name
35	0.052.1557.0	1	gasket
36	0.052.1558.0/10	1	gasket
37	2.0112.207.2	2	screw m 8 p 1.25 x 20
39	2.0112.207.2	1	screw m 8 p 1.25 x 20
40	2.1530.043.0	1	oil seal 17.13x2.62
41	0.071.1551.3/10	1	tube 1167 <-
41	0.071.1557.3	1	tube -> 1200
41	0.074.1551.3	1	tube -> 1168 1199 <=
42	2.3261.119.2	1	pipe fitting
42	2.3264.125.2	1	pipe fitting
43	2.1470.002.2	1	lock washer 6
44	2.1011.103.2	1	nut m 6 p.1
45	2.0112.013.2	1	screw m 6 p.1 x 35
46	0.9015.270.0	2	bracket



Thank you so much for reading.  
Please click the “Buy Now!”  
button below to download the  
complete manual.



After you pay.

You can download the most  
perfect and complete manual in  
the world immediately.

Our support email:

[ebooklibonline@outlook.com](mailto:ebooklibonline@outlook.com)