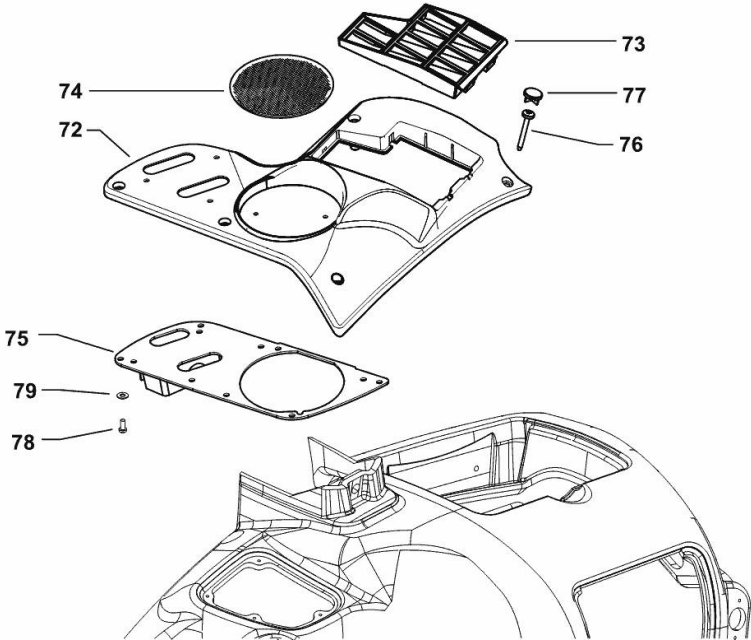


Fig.	P/n	QTY	Name
------	-----	-----	------

Notes:  
[IRON 170 CONTINUO DCR] 10041 <-

72	0.013.2592.0/30	1	console RAL 7046
73	0.012.9096.0/20	1	carrier RAL 7046
74	0.015.9401.0/10	1	sound deadening mat RAL 7012
75	0.013.3025.3	1	support
76	2.0350.509.3	5	screw 4.2x32
77	2.3199.307.0/10	3	plug RAL 7046
78	01144999	8	screw 2.9x9.5
79	2.1310.028.2	8	flat washer

K9\_J8271\_20\_0-B-001



# IRON 170 CONTINUO DCR

Section: G0 - BODYWORK - CAB

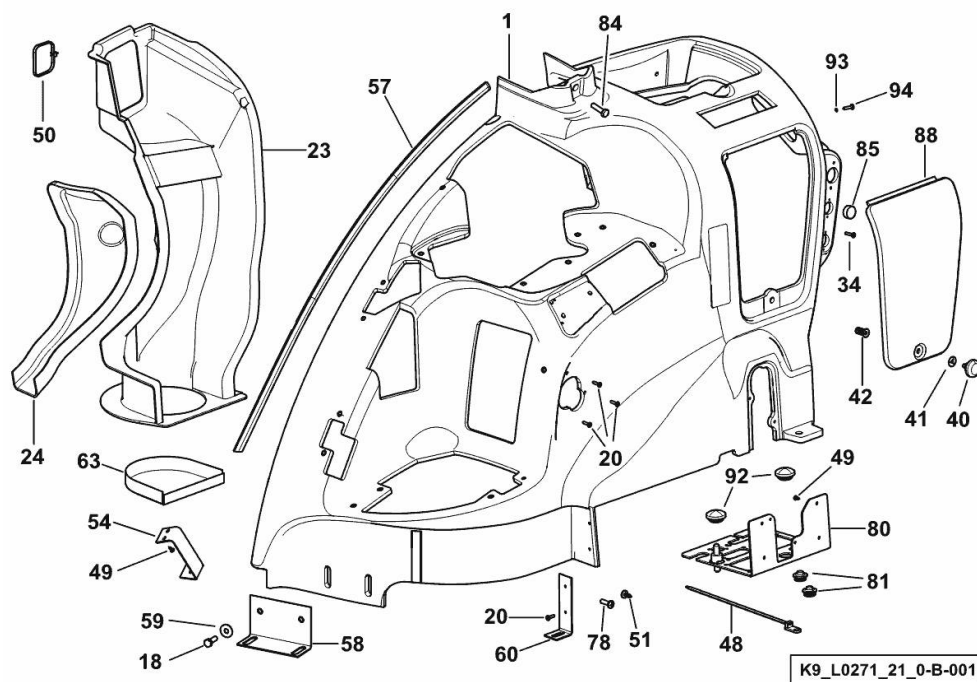
Ref: G0.06.5 (1)

## CONTROL CONSOLE DX/RH/RE

Fig.	P/n	QTY	Name
------	-----	-----	------

### Notes:

[IRON 170 CONTINUO DCR] -> 10042



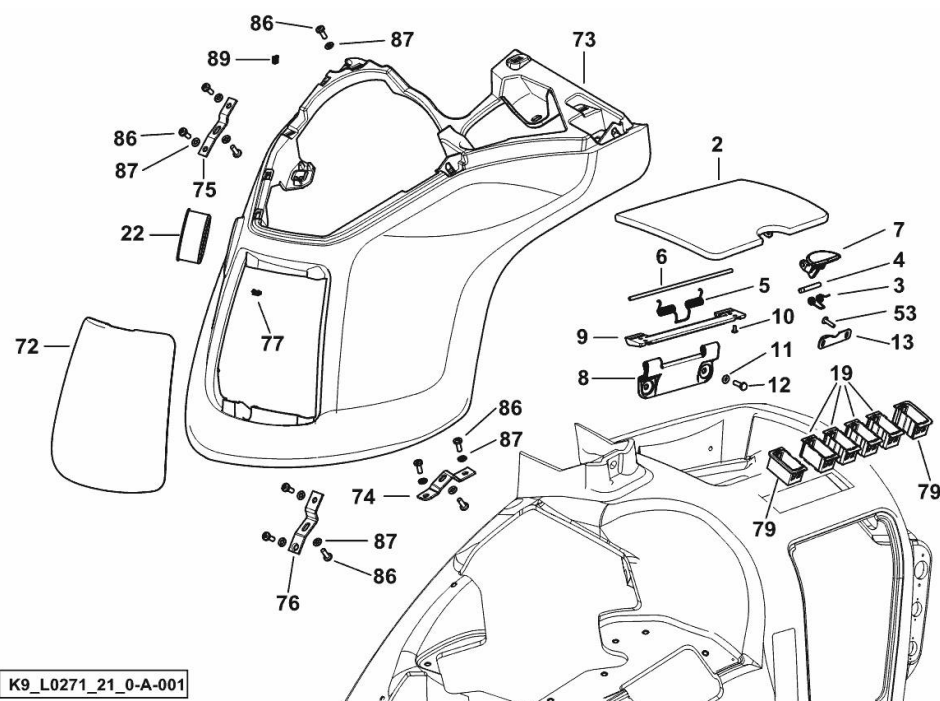
1	0.018.6954.4/10	1	console
18	2.0114.209.2	2	screw m 8 x 25
20	04426906	7	screw 4.2x16
23	0.010.9949.0/20	1	canal dx/rh/re
24	04429269	1	fin
34	04424184	4	screw
40	04425438	1	screw
41	04425756	1	disc
42	2.1143.006.4	2	insert m 6
48	01171694	9	clamp 172X4.6
49	2.0350.253.3	6	screw m 3.5 x 9.5 AB
50	2.6852.203.0	2	clamp 292 x 4.8
51	04453196	14	screw 3.5x8
54	04429841	1	bracket
57	04418723	1	profile
58	0.018.8660.3	1	support
59	2.1549.599.2	2	washer 9x30x3
60	04429758	1	support
63	0.011.5949.0	1	protective mesh
78	01144999	8	screw 2.9x9.5
80	0.015.3739.3/50	1	bracket
81	04424188	3	grommet 16
84	2.0114.211.2	1	screw m 8 x 30
85	04418895	1	plug
88	04429295	1	cover
92	04450940	2	bottom
93	2.1310.028.3	4	washer 4
94	01119630	4	screw m 4 x 16

**CONTROL CONSOLE DX/RH/RE**

Fig.	P/n	QTY	Name
------	-----	-----	------

**Notes:**

[IRON 170 CONTINUO DCR] -&gt; 10042



K9\_L0271\_21\_0-A-001

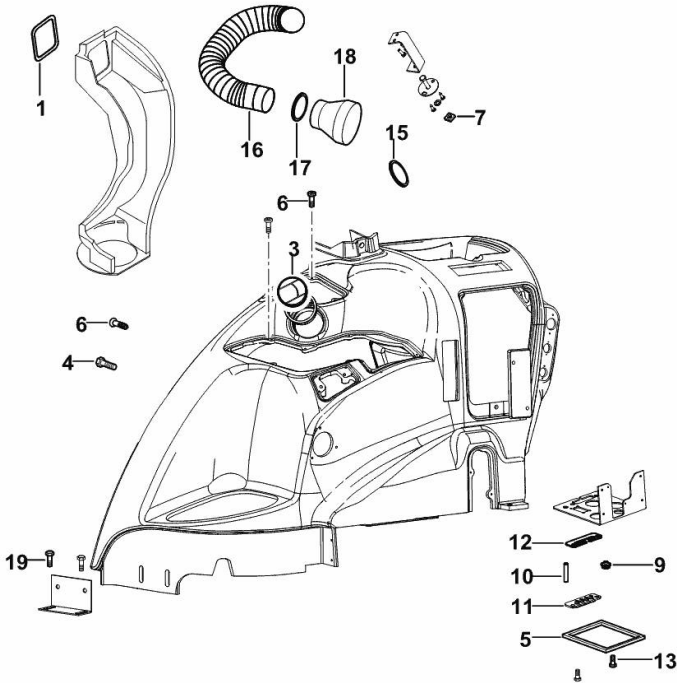
2	04429294	1	cover
3	2.4099.120.3/10	1	spring
4	2.1699.510.2	1	pin
5	2.4099.135.2	1	spring
6	2.1659.520.3	1	pin
7	0.010.9955.0	1	handle
8	0.010.9987.0	1	hinge
9	0.010.9988.0/10	1	hinge
10	04419646	4	self tapping screw
11	2.1312.001.2	2	washer 4
12	2.0114.007.2	2	screw m 6 p.1 x 20
13	04429203	1	support
19	0.012.9681.4/10	4	tip
22	04431564	1	pipe fitting
53	04412976	2	screw 4.8x19
72	0.017.0205.0/10	1	shutter
73	0.017.0206.2/30	1	console
74	0.017.0477.0/10	1	bracket
75	0.017.0475.0	1	bracket
76	0.017.0476.0/10	1	bracket
77	0.013.4283.0	4	clip
79	0.012.9689.4/10	2	shim
86	2.0330.406.2	13	screw m 6 p.1.0 x 16
87	2.1310.002.3	13	flat washer 6.4 x 12 x 1.6
89	2.6999.064.6	3	special nut m 6

CONTROL CONSOLE DX/RH/RE

Fig.	P/n	QTY	Name
------	-----	-----	------

Notes:  
[IRON 170 CONTINUO DCR] 10057 <-

1	0.011.4085.0/20	2	gasket mm 390
3	04428870	2	mixer
4	04424185	4	screw DIN 7983S-ST 4.2X13
5	0.015.6302.0	1	gasket
6	04426906	11	screw 4.2x16
7	04429842	1	special nut
9	04424188	1	grommet 16
10	01396853	5	flexible hose
11	04429293	1	gasket
12	04429437	1	plate
13	2.0114.204.2	2	screw m 8 x 14
15	2.6852.203.0	1	clamp 292 x 4.8
16	04431843	2	flexible hose
17	01137413	1	fascia Ø 32/50
18	04429703/10	1	connection
19	01171763	2	screw m 8 p.1.25 x 20



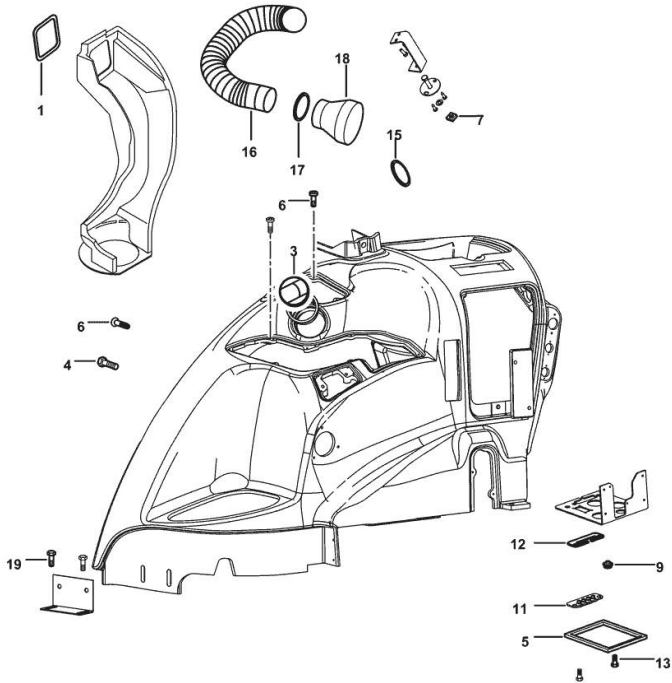
K9\_J2971\_43\_0-A-001

CONTROL CONSOLE DX/RH/RE

Fig.	P/n	QTY	Name
------	-----	-----	------

Notes:  
[IRON 170 CONTINUO DCR]

1	0.011.4085.0/20	2	gasket mm 390
3	04428870	2	mixer
4	04424185	4	screw DIN 7983S-ST 4.2X13
5	0.015.6302.0	1	gasket
6	04426906	11	screw 4.2x16
7	04429842	1	special nut
9	04424188	1	grommet 16
11	04429293	1	gasket
12	04429437	1	plate
13	2.0114.204.2	2	screw m 8 x 14
15	2.6852.203.0	1	clamp 292 x 4.8
16	04431843	2	flexible hose
17	01137413	1	fascia Ø 32/50
18	04429703/10	1	connection
19	01171763	2	screw m 8 p.1.25 x 20



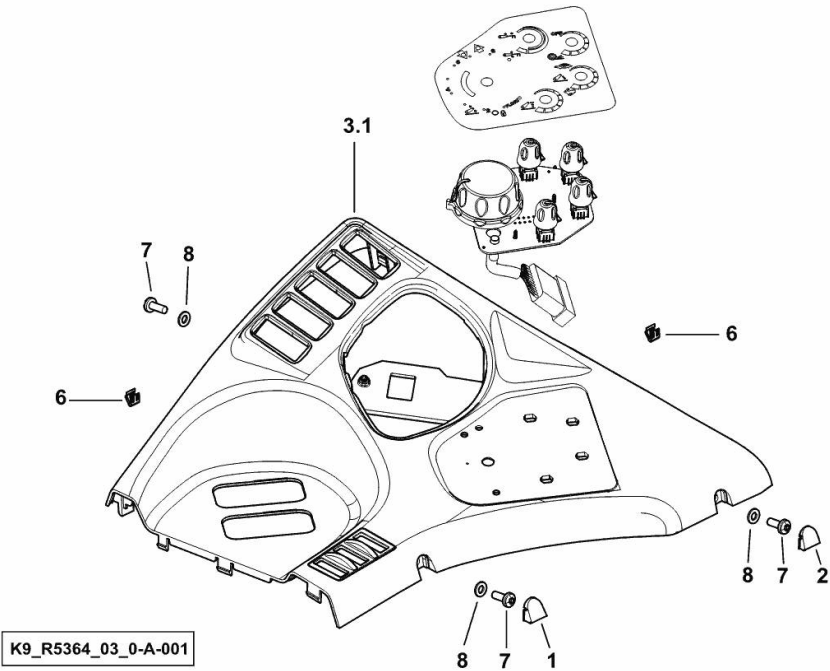
K9\_J2971\_43\_0-A-002

CONTROL CONSOLE DX/RH/RE

Fig.	P/n	QTY	Name
------	-----	-----	------

Notes:  
- FOR TYPES WITHOUT FRONT LIFT AND FRONT QUICK-FIT COUPLERS [IRON 170 CONTINUO DCR] -> 10045

1	0.017.0544.0/10	1	plug
2	0.017.0545.0/10	1	plug
3.1	0.017.0550.2/20	1	front grille
6	0.013.4283.0	4	clip
7	2.0330.406.2	3	screw m 6 p.1.0 x 16
8	2.1310.002.3	3	flat washer 6.4 x 12 x 1.6



# IRON 170 CONTINUO DCR

Section: G0 - BODYWORK - CAB

Ref: G0.06.9 (1)

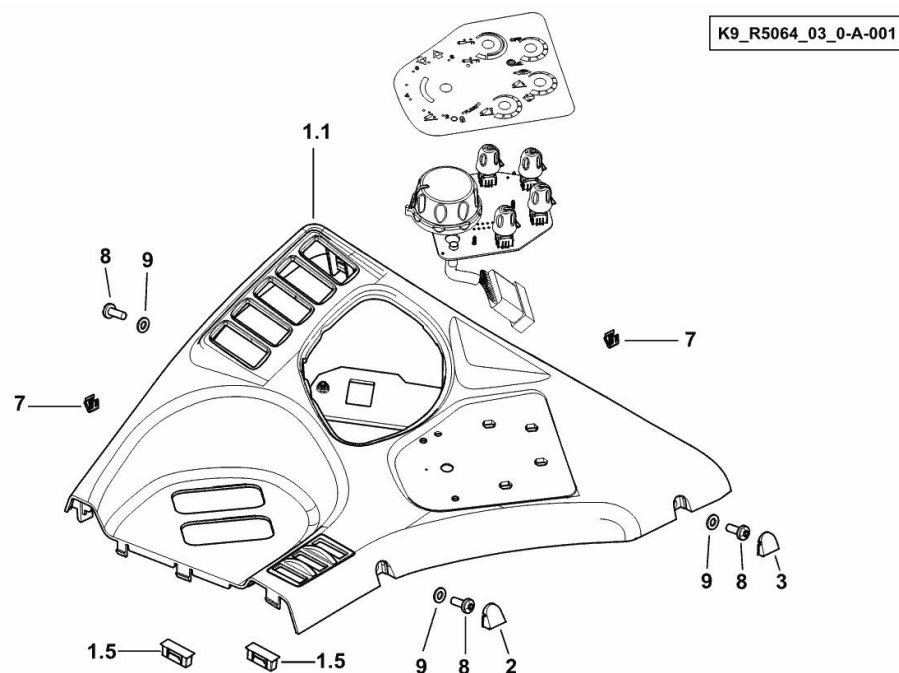
## CONTROL CONSOLE DX/RH/RE

Fig.	P/n	QTY	Name
------	-----	-----	------

### Notes:

- FOR MODELS WITH FRONT LIFT [IRON 170 CONTINUO DCR] -> 10044

1.1	0.017.0543.2/20	1	front grille
1.5	0.017.7398.0	2	plug
2	0.017.0544.0/10	1	plug
3	0.017.0545.0/10	1	plug
7	0.013.4283.0	4	clip
8	2.0330.406.2	3	screw m 6 p.1.0 x 16
9	2.1310.002.3	3	flat washer 6.4 x 12 x 1.6

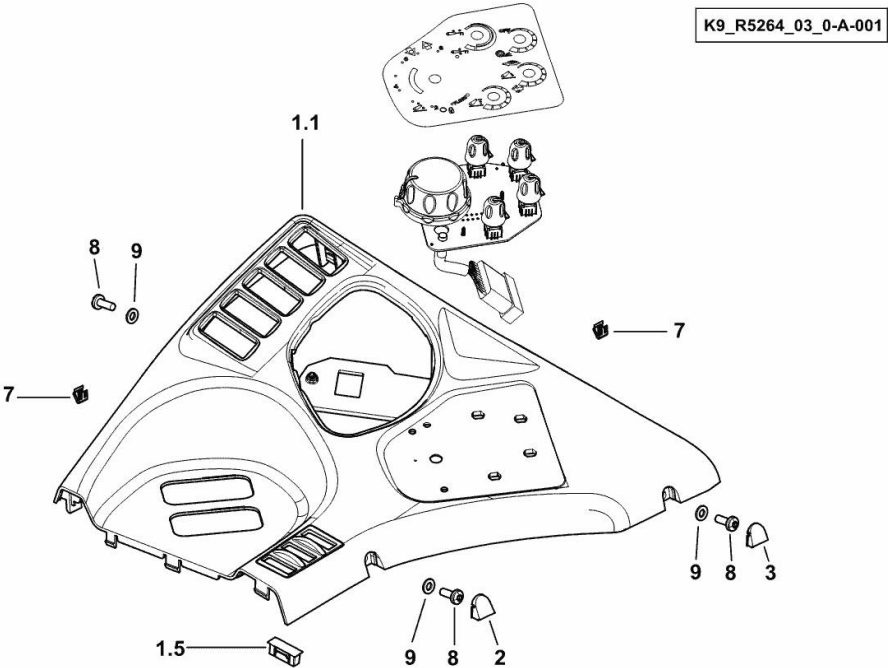


CONTROL CONSOLE DX/RH/RE

Fig.	P/n	QTY	Name
------	-----	-----	------

Notes:  
- FOR TYPES W/ FRONT LIFT AND FRONT QUICK COUPLERS [IRON 170 CONTINUO DCR] -> 10042

1.1	0.017.0543.2/20	1	front grille
1.5	0.017.7398.0	1	plug
2	0.017.0544.0/10	1	plug
3	0.017.0545.0/10	1	plug
7	0.013.4283.0	4	clip
8	2.0330.406.2	3	screw m 6 p.1.0 x 16
9	2.1310.002.3	3	flat washer 6.4 x 12 x 1.6





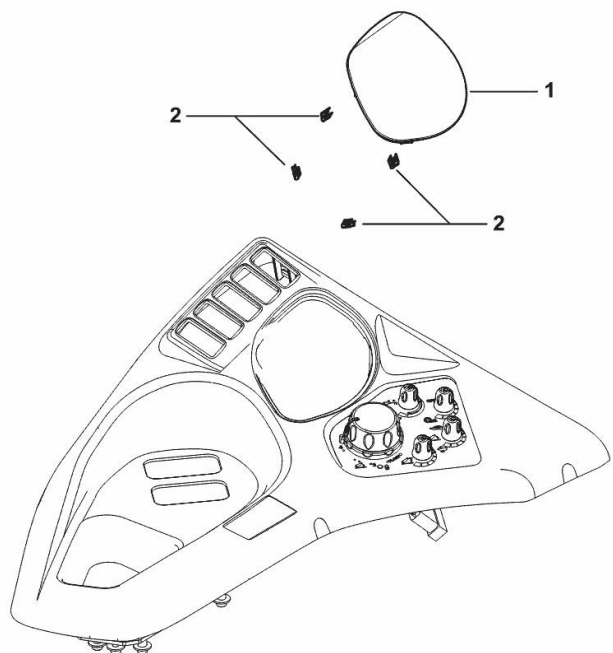
**COVER PLATE**

Fig.	P/n	QTY	Name
------	-----	-----	------

**Notes:**

- FOR TYPES WITHOUT I-MONITOR [IRON 170 CONTINUO DCR] -> 10042

1	0.017.0556.0/10	1	console
2	0.013.4283.0	4	clip



K9\_L0271\_50\_0-A-001

# IRON 170 CONTINUO DCR

Section: G0 - BODYWORK - CAB

Ref: G0.06.12 (1)

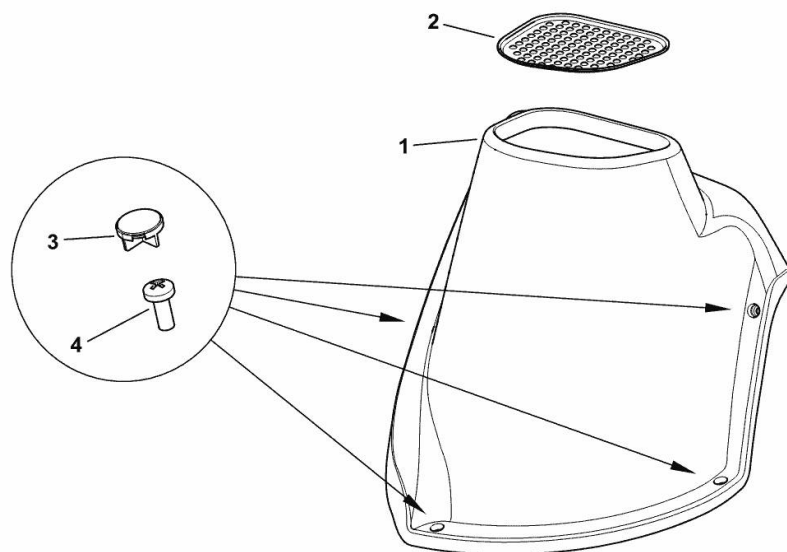
## RIGHT-HAND CONSOLE PARTS KIT

Fig.	P/n	QTY	Name
------	-----	-----	------

### Notes:

[IRON 170 CONTINUO DCR] 10041 <-

1	0.016.1045.3/10	1	cover
2	0.016.1044.0	1	cap
3	2.3199.307.0/10	4	plug RAL 7046
4	2.0332.304.2	4	screw m 5 p.0.8 x 12



K9\_J4271\_21\_0-A-001

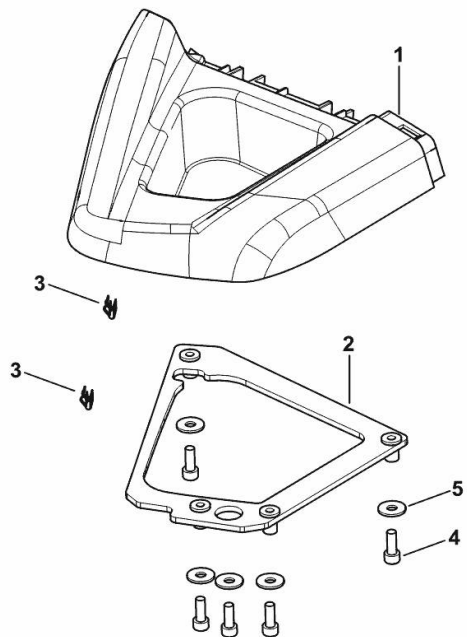
**RIGHT-HAND CONSOLE PARTS KIT**

Fig.	P/n	QTY	Name
------	-----	-----	------

**Notes:**

- FOR TYPES WITHOUT I-MONITOR [IRON 170 CONTINUO DCR] -> 10042

1	0.017.0553.2/20	1	casting holder
2	0.017.0209.2/10	1	bracket
3	0.013.4283.0	1	clip
4	2.0319.017.6	9	screw m 6 p.1.0 x 16
5	2.1312.003.2	9	washer 6



K9\_J4271\_49\_0-A-001

Thank you so much for reading.  
Please click the “Buy Now!”  
button below to download the  
complete manual.



After you pay.

You can download the most  
perfect and complete manual in  
the world immediately.

Our support email:

[ebooklibonline@outlook.com](mailto:ebooklibonline@outlook.com)