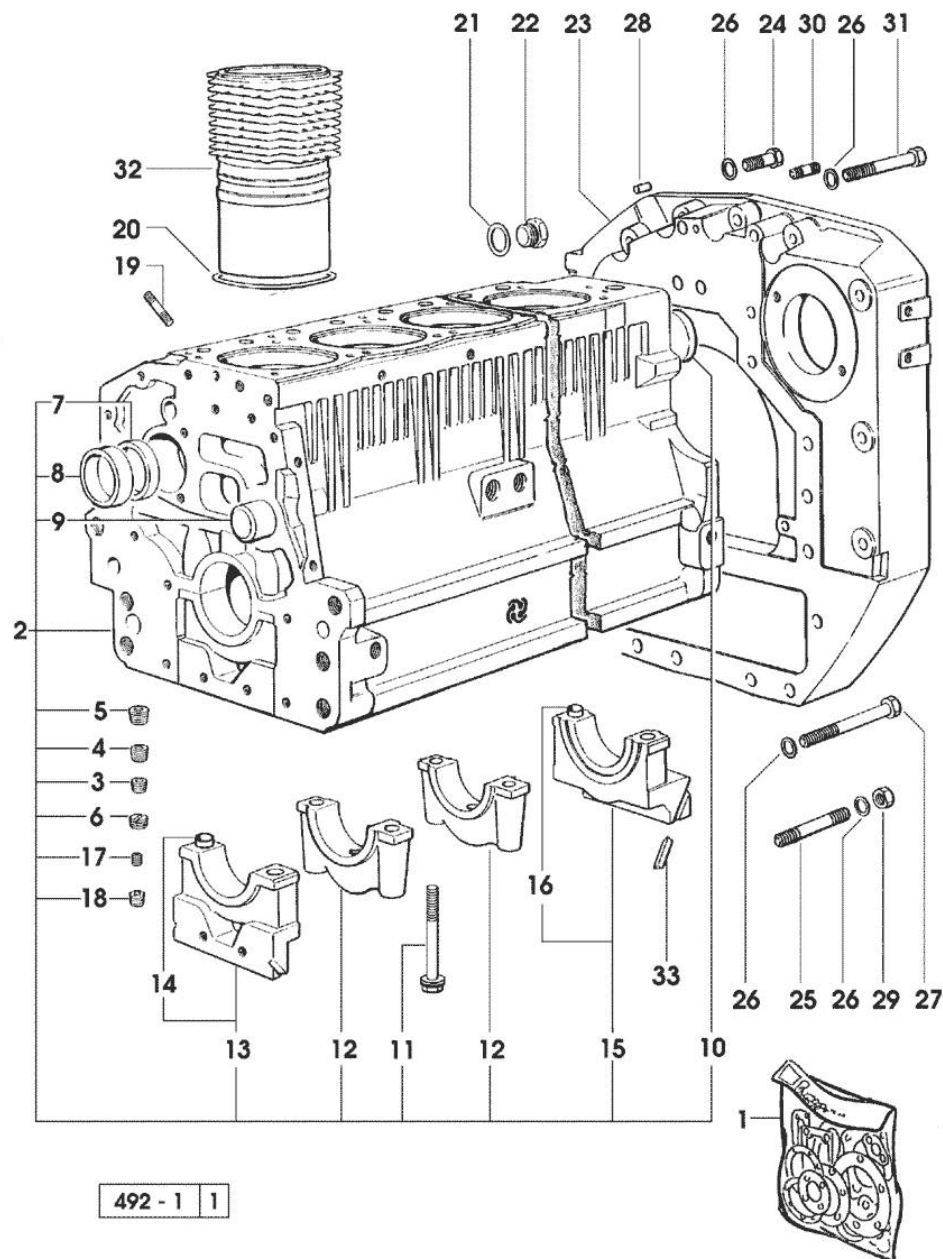


Section: ENGINE

CRANKCASE



492 - 1 | 1

Notes:

2000 <- X TITAN 160 [TITAN 145]

| Fig. | P/n | QTY | Name |
|------|-----------------|-----|----------------------------------------------------------------------------------|
| 1 | 0.336.0050.6 | 1 | gasket set - FOR ENGINE MOUNTING |
| 2 | 0.007.0779.6/20 | 1 | crankcase * 2234 <= X TITAN 160 - 007.0876.0/10 |
| 3 | 2.3130.002.1 | 2 | plug 1/4" gas |
| 4 | 2.3130.003.1 | 7 | plug 3/8" gas |
| 5 | 2.3131.006.0 | 1 | plug m 22 x 1.5 |
| 6 | 2.1324.011.0 | 1 | plug |
| 7 | 0.065.1140.0 | 6 | special bushing 59X55X20 |
| 8 | 0.065.1141.0 | 1 | special bushing 59X55X30 |
| 9 | 0.066.1151.0 | 1 | pin |
| 10 | 2.3179.012.0 | 1 | plug 60 |
| 11 | 0.065.1117.0 | 14 | screw m 12 x 100 |
| 12 | 0.065.1114.0/10 | 5 | support |
| 13 | 0.065.1112.7 | 1 | support |
| 14 | 2.1699.165.0 | 1 | bush 12.3x15x16 |
| 15 | 0.007.0848.3/10 | 1 | support |
| 16 | 2.1699.165.0 | 1 | bush 12.3x15x16 |
| 17 | 2.3199.092.0 | 6 | plug 8 x 12 |
| 18 | 2.3130.001.1 | 15 | plug 1/8" gas |
| 19 | 2.0432.003.7 | 18 | stud bolt m 8 p.1.25 / p.1 x 20 |
| 20 | 2.1539.130.0/10 | 6 | special oil seal 117.07x3.53 |
| 21 | 2.1539.047.0 | 1 | special oil seal 26.7x1.78 |
| 22 | 2.3199.405.2 | 1 | plug m 28 p.1.5 |
| 23 | 0.007.0809.0/20 | 1 | flange * 1370 <- X TITAN 145 * 1395 <- X TITAN 160 - N.4 - 2.1699.448.0 |
| 24 | 2.0112.513.2 | 11 | screw m 14 p.2 x 35 |
| 25 | 2.0432.328.7 | 4 | stud bolt m 14 p.2-1.5x130 |
| 26 | 2.1470.008.2 | 19 | lock washer 14 |
| 27 | 2.0112.534.2 | 2 | screw m 14 p.2x125 |
| 28 | 2.1653.911.0 | 2 | cylindrical plug 12x25 |
| 29 | 2.1011.108.2 | 4 | nut m 14 p.2 |
| 30 | 2.0432.255.7 | 2 | stud bolt m 12 p.1.75-1.25x25 |
| 31 | 2.0312.520.1 | 2 | screw m 14 p.2x70 |
| 32 | 0.007.0762.0/50 | 6 | engine cylinder |
| 33 | 0.066.1152.0/10 | 4 | gasket |

Section: ENGINE

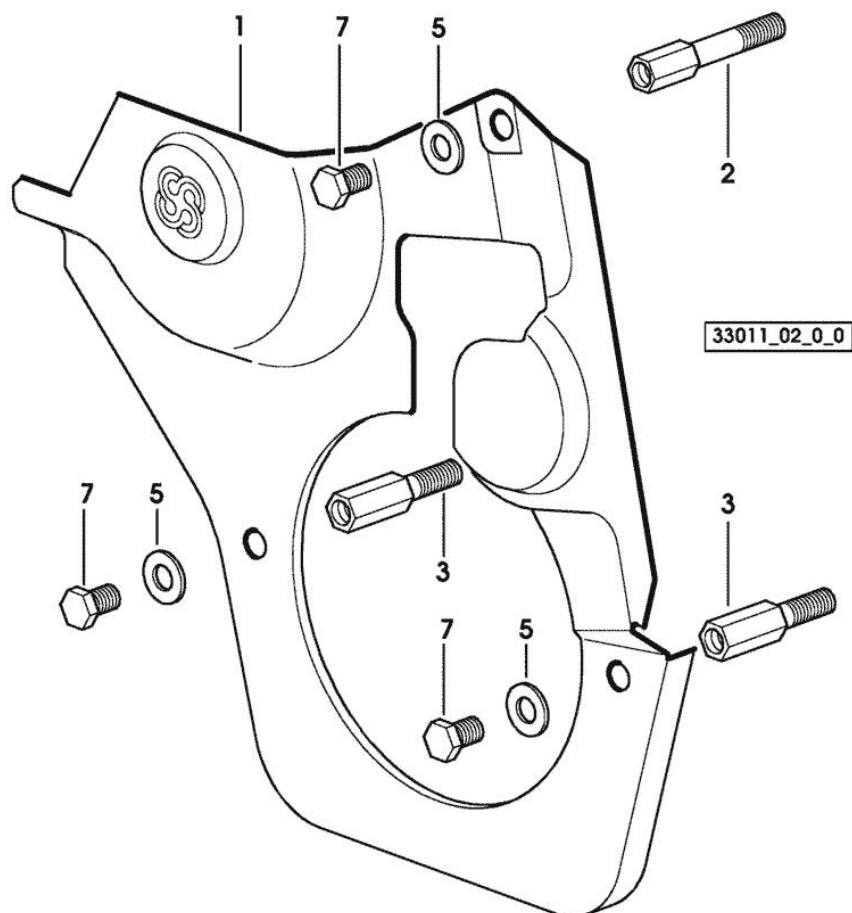
TIMING CASE

| Fig. | P/n | QTY | Name |
|------|-----|-----|------|
|------|-----|-----|------|

Notes:

[TITAN 145]

| | | | |
|---|-----------------|---|-------------------------------------|
| 1 | 0.007.1262.3/50 | 1 | guard |
| 2 | 0.007.1271.0/10 | 1 | small column m 8 p.1.25 / L = mm 60 |
| 3 | 0.007.1272.0/10 | 2 | small column m 8 p.1.25 / L = mm 50 |
| 5 | 2.1310.004.2 | 3 | flat washer 8.4x17 |
| 7 | 2.0112.205.2 | 3 | screw m 8 p.1.25 x 16 |



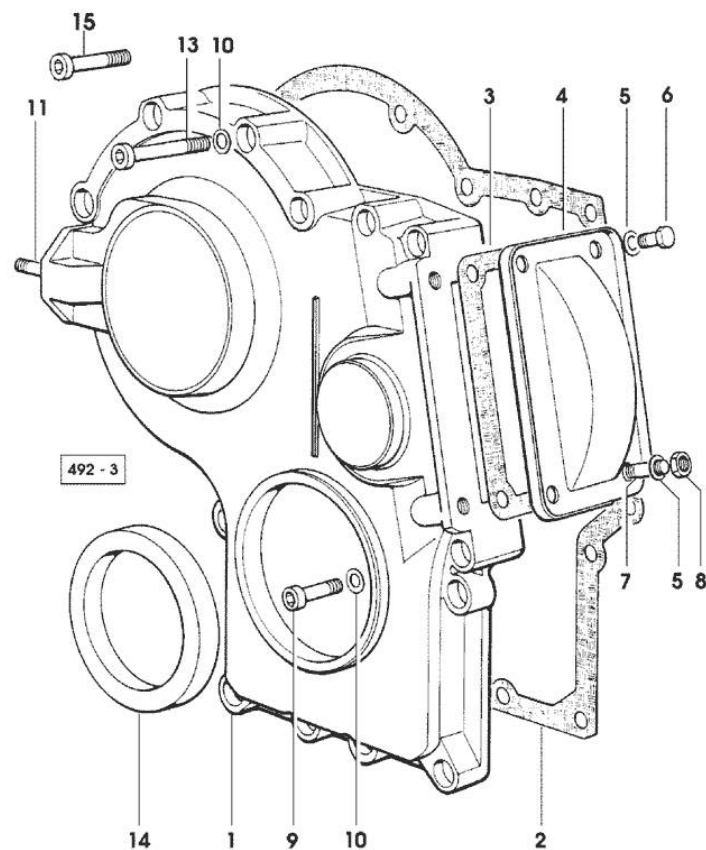
Section: ENGINE

TIMING CASE

| Fig. | P/n | QTY | Name |
|------|-----|-----|------|
|------|-----|-----|------|

Notes:

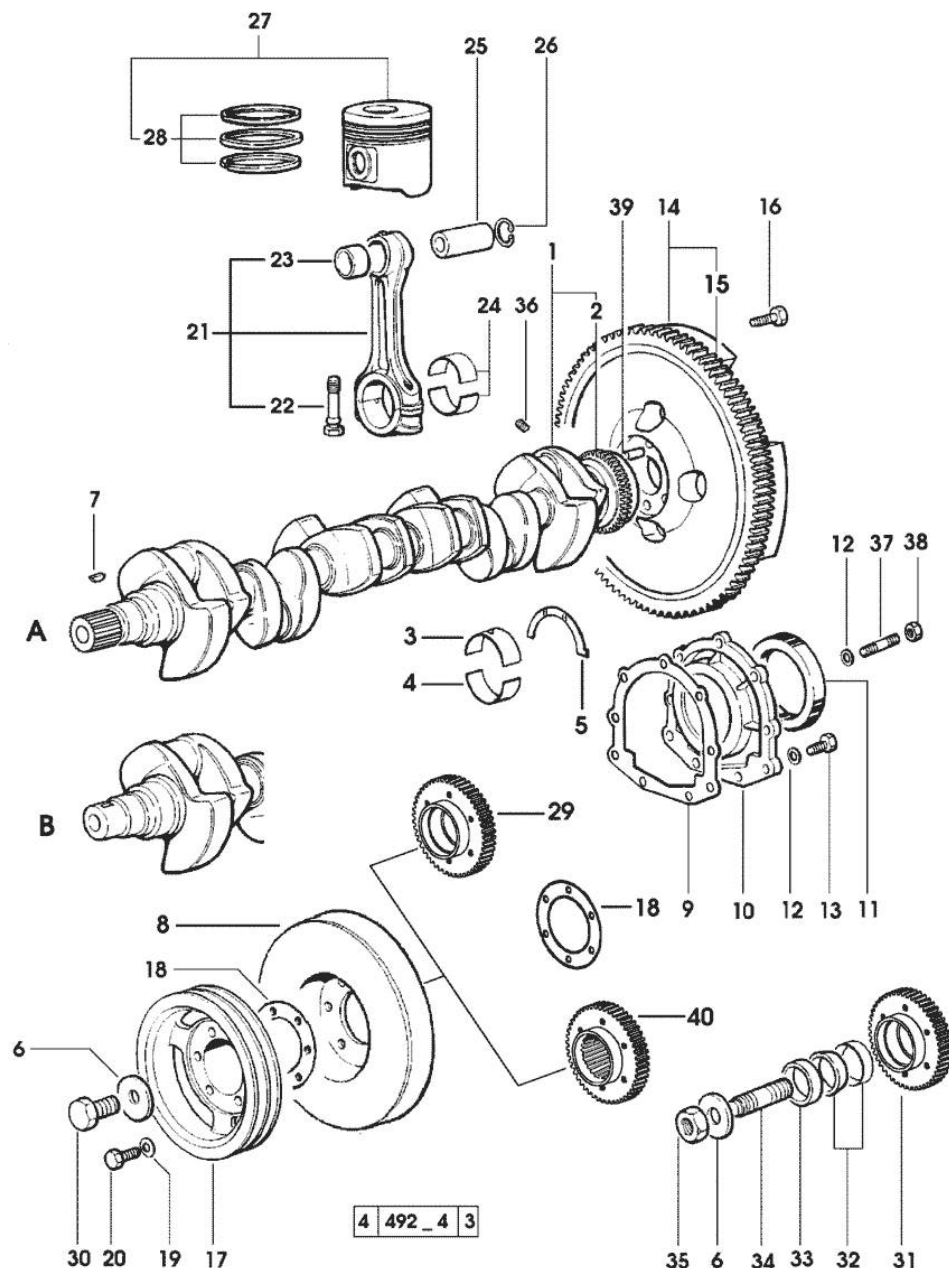
[TITAN 145]



| | | | |
|----|-----------------|----|---------------------------------|
| 1 | 0.065.1132.0/60 | 1 | guard |
| 2 | 0.065.1150.0/30 | 1 | gasket |
| 3 | 0.065.1152.0 | 1 | gasket |
| 4 | 0.065.1151.0 | 1 | cover |
| 5 | 2.1470.004.2 | 4 | lock washer 8 |
| 6 | 2.0112.205.2 | 2 | screw m 8 p.1.25 x 16 |
| 7 | 2.0432.003.7 | 2 | stud bolt m 8 p.1.25 / p.1 x 20 |
| 8 | 2.1011.405.2 | 2 | nut m 8 p.1 |
| 9 | 2.0312.214.1 | 3 | screw m 8 p.1.25 x 40 |
| 10 | 2.1480.014.1 | 15 | washer 8 |
| 11 | 2.0432.003.7 | 2 | stud bolt m 8 p.1.25 / p.1 x 20 |
| 13 | 2.0312.219.2 | 4 | screw m 8 p.1.25x65 |
| 14 | 2.1529.141.0 | 1 | special oil seal |
| 15 | 2.0312.208.2 | 8 | screw m 8 p.1.25 x 25 |

Section: ENGINE

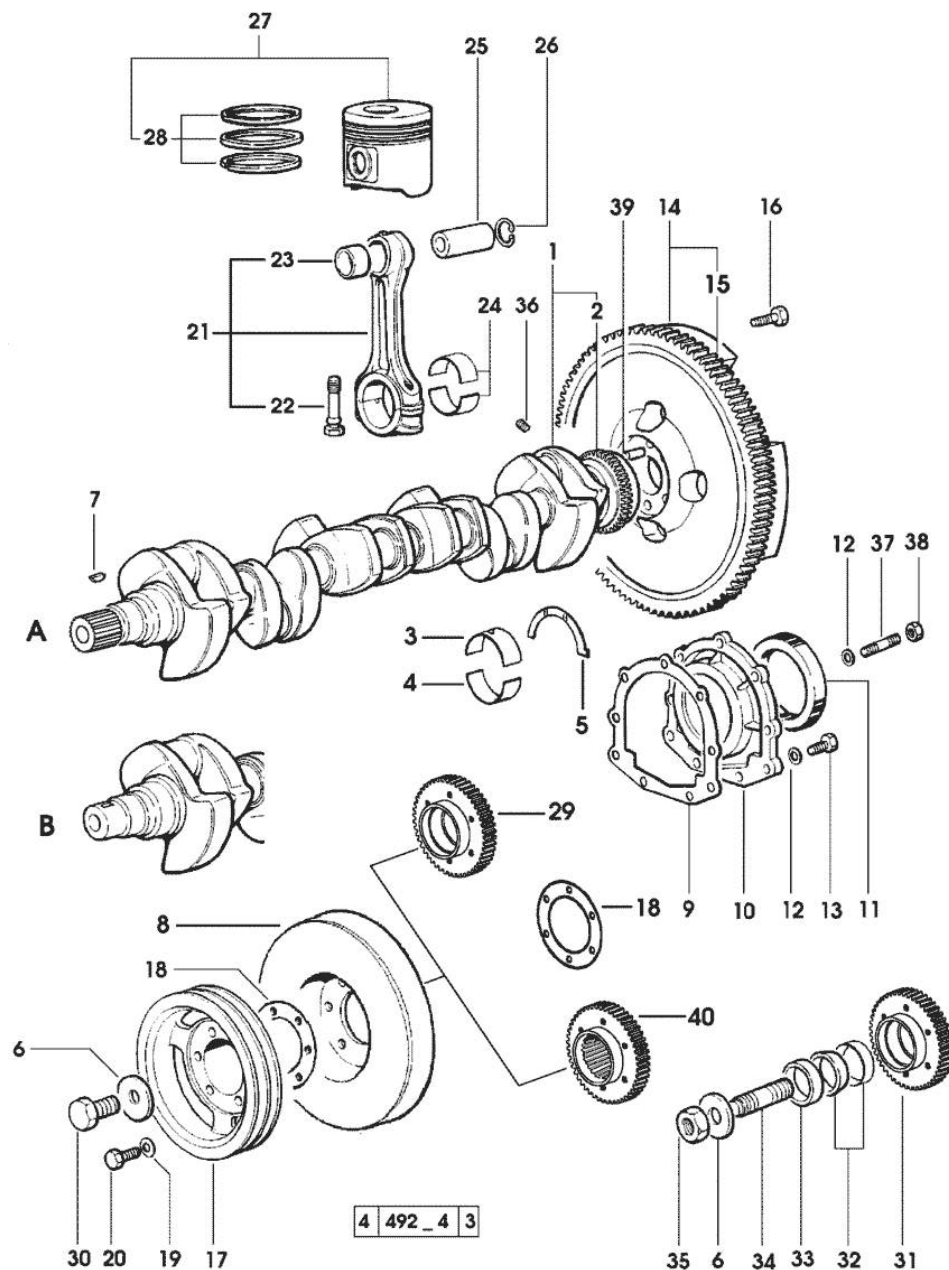
CRANKSHAFT



| Fig. | P/n | QTY | Name |
|-----------------------|-----------------|-----|-----------------------------------------------------|
| Notes: [TITAN 145] | | | |
| 1 | 0.010.4320.3/20 | 1 | crankshaft (...) <= " B " * N.1 011.2206.0/10 |
| 2 | 0.007.0855.0 | 1 | gear |
| 3 | 0.065.1215.0 | 7 | main half bushing STANDARD |
| 3 | 0.065.1215.7 | | main half bushing - mm 0.25 |
| 3 | 0.065.1215.8 | | main half bushing - mm 0.50 |
| 4 | 0.065.1216.0 | 7 | main half bushing |
| 4 | 0.065.1216.7 | | main half bushing - mm 0.25 |
| 4 | 0.065.1216.8 | | main half bushing - mm 0.50 |
| 5 | 0.065.1218.0 | 4 | shim STANDARD |
| 5 | 0.065.1218.7 | | shim + mm 0.10 |
| 5 | 0.065.1218.8 | | shim + mm 0.15 |
| 6 | 2.1599.524.7 | 1 | washer 21x60x12 |
| 7 | 2.1720.006.0 | 1 | key 4x6.5 |
| 8 | 0.007.1010.3 | 1 | antivibration pulley |
| 9 | 0.065.1254.0/20 | 1 | gasket |
| 10 | 0.007.0851.0/10 | 1 | cover |
| 11 | 2.1529.073.0 | 1 | special oil seal 110x130x13 |
| 12 | 2.1474.009.2 | 9 | spring washer 8 |
| 13 | 2.0112.207.2 | 7 | screw m 8 p 1.25 x 20 |
| 14 | 0.007.0655.3/20 | 1 | flywheel |
| 15 | 0.065.1242.0 | 1 | crown wheel Z = 123 |
| 16 | 2.0119.174.0/10 | 6 | screw m 12 p.1.25x45 |
| 17 | 0.007.0962.0/20 | 1 | pulley -> 2001 X TITAN 160 - X TITAN 190 |
| 17 | 0.008.2212.0/60 | 1 | pulley 1239 <= X TITAN 160 |
| 17 | 0.008.2212.0/70 | 1 | pulley => 1240 - 2000 <- X TITAN 160 |
| 18 | 2.1589.136.0 | | shoulder ring 71x110x0.5 |
| 18 | 2.1589.137.0 | | shoulder ring 71x110x1 |
| 19 | 2.1470.006.2 | 6 | lock washer 10 |
| 20 | 2.0112.322.2 | 6 | screw m 10 p.1.5x65 |
| 21 | 0.007.1395.3/20 | 6 | engine connecting rod |
| 22 | 2.0399.213.0 | 12 | screw m 12 p.1.25x61.5 |
| 23 | 2.1559.255.0 | 6 | special bushing 34.60x39.130x34.65 |
| 24 | 0.065.1225.0 | 12 | con.rod half bushing STANDARD - A = 28.75 -> 29.00 |
| 24 | 0.065.1225.7 | | con.rod half bushing - mm 0.25 |
| 24 | 0.065.1225.8 | | con.rod half bushing - mm 0.50 |

Section: ENGINE

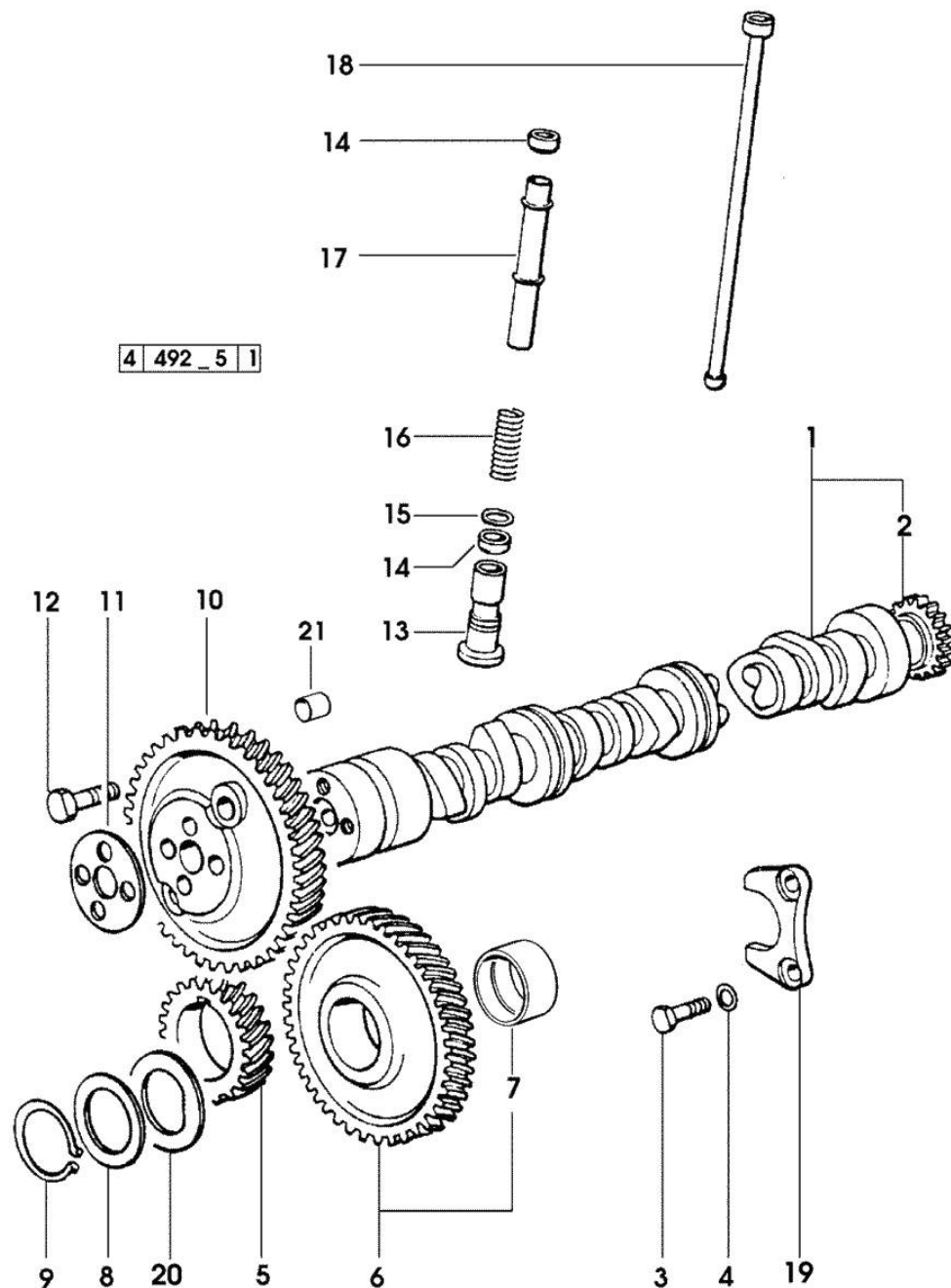
CRANKSHAFT



| Fig. | P/n | QTY | Name |
|------|-----------------|-----|------------------------------------------------------------------|
| 25 | 0.038.1236.0/10 | 6 | piston pin Ø 18 / Ø 35 / L = mm 90 |
| 26 | 2.1411.014.1 | 12 | circlip 35 |
| 27 | 0.340.0060.6/10 | 6 | complete piston |
| 27 | 0.383.0060.6 | 6 | complete piston - X TITAN 160 190 - EXPORT U.S.A. |
| 28 | 0.338.0052.6/10 | 6 | piston ring set |
| 29 | 0.011.2140.0/10 | 1 | hub - X B (...) <= |
| 30 | 2.0399.144.7/10 | 1 | screw m 20 p.1.5x51 |
| 31 | 0.011.2141.0/10 | 1 | hub - FOR MODELS EQUIPPED WITH FRONT P.T.O. - X B (...) <= |
| 32 | 0.035.1263.0 | 2 | ring - X B (...) <= |
| 33 | 2.1579.949.0 | 1 | ring 50.2x56.8x8 - X B (...) <= |
| 34 | 2.0439.195.7 | 1 | stud bolt m 20 p.1.5x80 - X B (...) <= |
| 35 | 2.1019.094.7 | 1 | nut m 20 p.1.5 - X B (...) <= |
| 36 | 2.3130.001.1 | 6 | plug 1/8" gas |
| 37 | 2.0432.003.7 | 2 | stud bolt m 8 p.1.25 / p.1 x 20 |
| 38 | 2.1011.105.2 | 2 | nut m 8 p.1.25 |
| 39 | 2.1652.915.0 | 1 | cylindrical plug 12x35 |
| 40 | 0.011.2206.0/10 | | hub - X A => (...) |

Section: ENGINE

CAMSHAFT

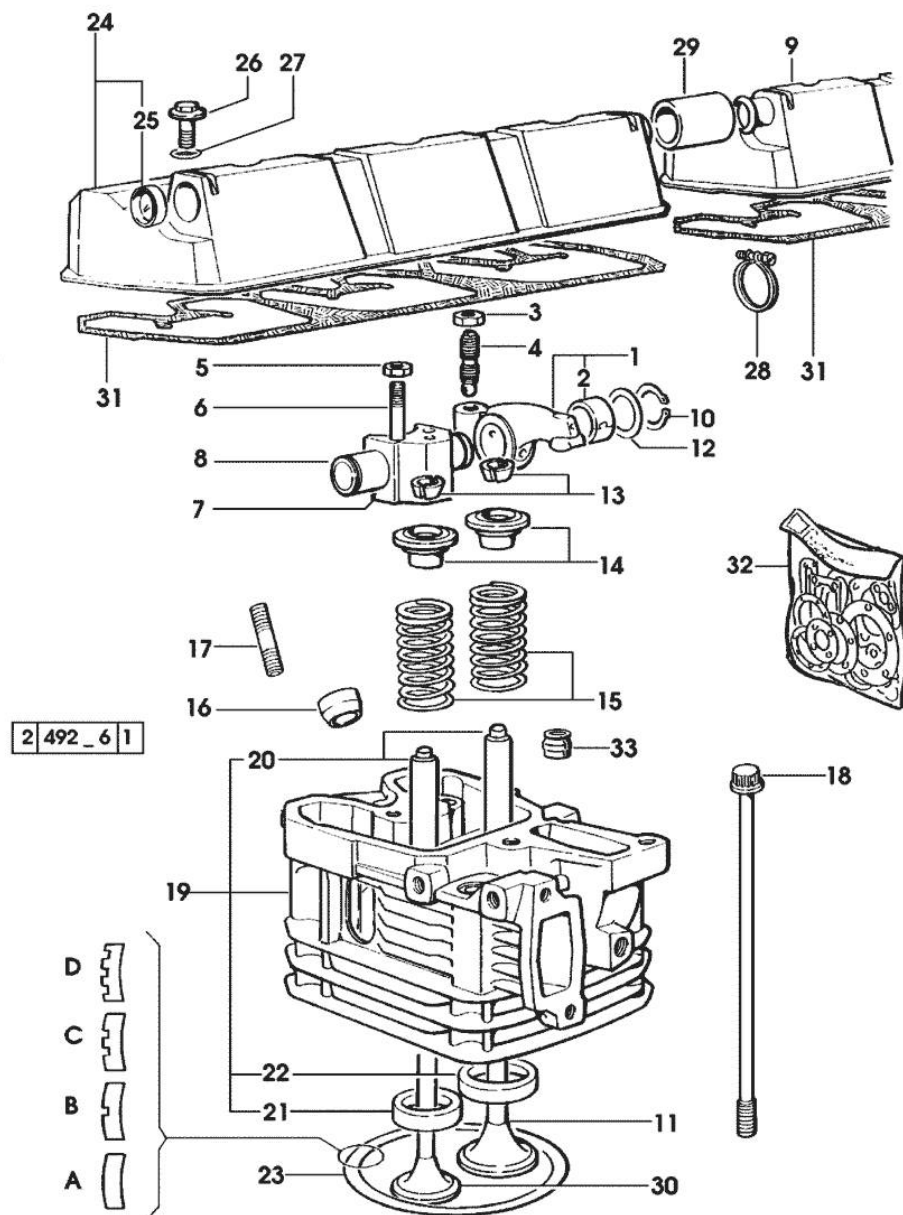


Notes:
[TITAN 145]

| Fig. | P/n | QTY | Name |
|------|-----------------|-----|---------------------------------------------------|
| 1 | 0.010.4968.3/10 | 1 | camshaft - X 190HP - EXPORT U.S.A. |
| 1 | 0.075.1310.3/30 | 1 | camshaft |
| 2 | 0.065.1324.0/10 | 1 | gear Z = 32 |
| 3 | 2.0312.206.2 | 2 | screw m 8 p 1.25 x 20 |
| 4 | 2.1480.014.1 | 2 | washer 8 |
| 5 | 0.007.1188.0/20 | 1 | gear Z = 29 |
| 6 | 0.007.1177.3/10 | 1 | gear z = 57 - WITH RED IDENTIFICATION STAMP |
| 6 | 0.007.1178.3/10 | | gear z = 57 - WITH YELLOW IDENTIFICATION STAMP |
| 6 | 0.007.1179.3/10 | | gear z = 57 - WITH GREEN IDENTIFICATION STAMP |
| 7 | 2.1559.185.0/10 | 2 | bushing |
| 8 | 0.065.1352.0 | 1 | shim |
| 9 | 2.1410.016.1 | 1 | circlip 40 |
| 10 | 0.065.1354.0/20 | 1 | gear z=58 |
| 11 | 0.065.1350.0 | 1 | small disc |
| 12 | 2.0132.207.2 | 4 | screw m 10 p.1 x 25 |
| 13 | 0.065.1330.0 | 12 | tappets |
| 14 | 2.1569.114.0/10 | 24 | gasket 14x18.5x8 |
| 15 | 2.1599.437.0 | 12 | shoulder ring |
| 16 | 2.4019.300.1/10 | 12 | spring 18.5x52x2 |
| 17 | 0.065.1332.0 | 12 | sleeve |
| 18 | 0.065.1331.2 | 12 | rod |
| 19 | 0.065.1353.0 | 1 | small plate |
| 20 | 0.065.1351.0 | 2 | shoulder ring |
| 21 | 2.1559.398.0 | 1 | bushing 10.5x13x12 |

Section: ENGINE

CYLINDER HEAD



Notes:

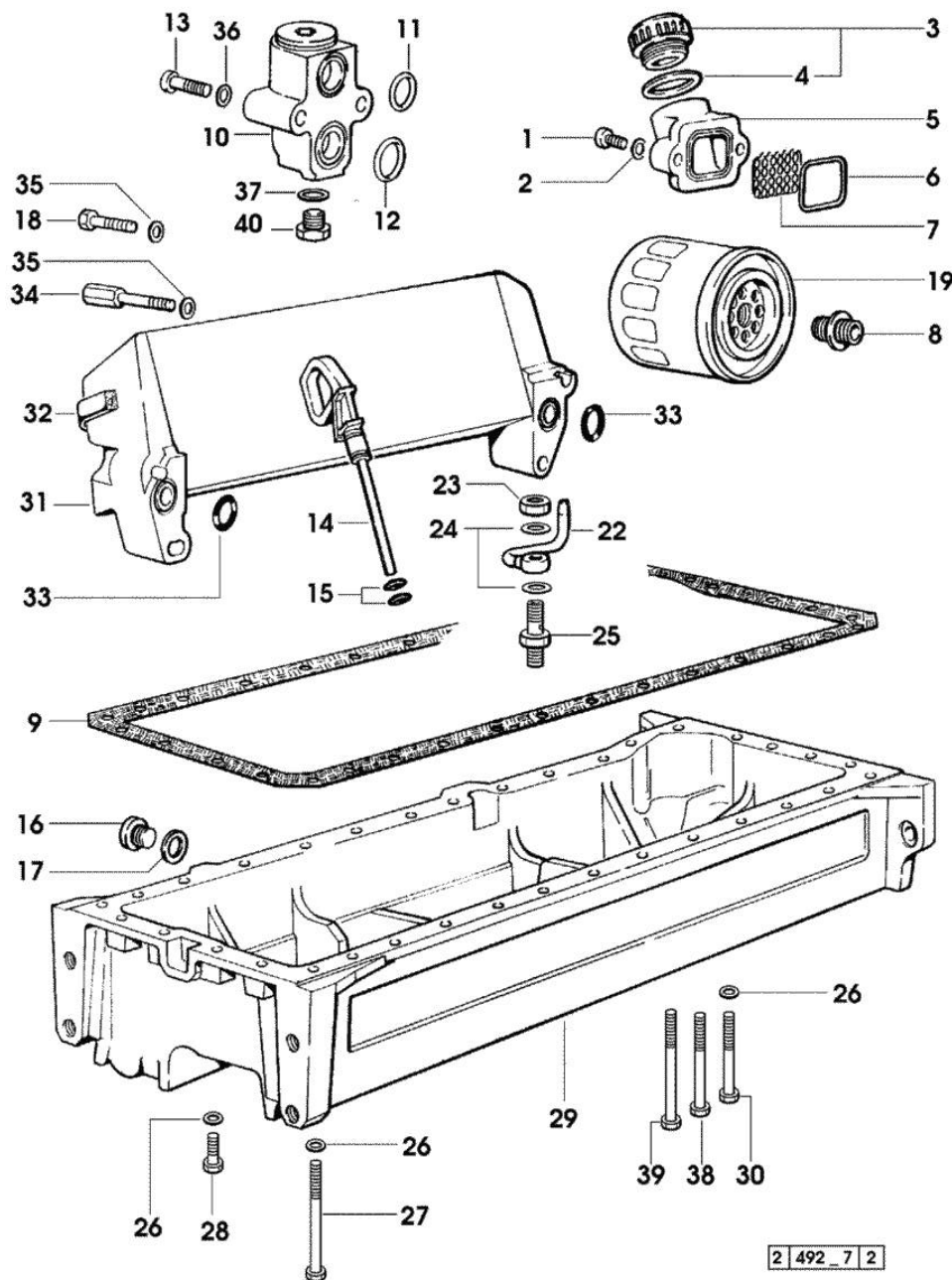
2000 <- X TITAN 160 [TITAN 145]

| Fig. | P/n | QTY | Name |
|------|-----------------|-----|--------------------------------------------------------------|
| 1 | 0.066.1432.0 | 6 | rocker arm |
| 2 | 2.1559.021.0/40 | 6 | bushing 15x19x22 |
| 3 | 2.1011.405.2 | 12 | nut m 8 p.1 |
| 4 | 0.021.1434.0 | 12 | screw |
| 5 | 2.1011.421.2 | 12 | nut m 10 p.1.25 |
| 6 | 2.0432.163.7 | 12 | stud bolt m 10 p.1.5 / p.1.25 x 45 |
| 7 | 0.066.1430.0/10 | 6 | support |
| 8 | 0.066.1431.0 | 12 | pin |
| 9 | 0.078.1450.3 | 1 | cover |
| 10 | 2.1410.055.1 | 12 | circlip 19 |
| 11 | 0.007.1146.0/10 | 6 | inlet valve mm 43.63 / Ø mm 9 |
| 12 | 2.1599.432.0 | 12 | shoulder ring |
| 13 | 0.074.1423.0 | 24 | conical valve cotter |
| 14 | 0.066.1425.0 | 12 | cup |
| 15 | 2.4019.287.0 | 12 | spring |
| 16 | 0.007.1122.0/10 | 6 | bush L = mm 6.4 |
| 17 | 2.0432.161.7 | 6 | stud bolt m 10 p.1.5 / p.1.25 x 40 |
| 18 | 0.065.1443.0/20 | 24 | screw |
| 19 | 0.007.1359.3/50 | 6 | engine head |
| 20 | 0.007.1779.0/10 | 12 | valve guide |
| 21 | 0.066.1427.0 | 6 | valve seat |
| 22 | 0.078.1426.0 | 6 | valve seat |
| 23 | 0.085.1450.0 | 1 | head gasket mm 0.5 -A- |
| 23 | 0.085.1451.0 | 2 | head gasket mm 0.7 -B- |
| 23 | 0.085.1452.0 | 1 | head gasket mm 1.0 -C- |
| 23 | 0.085.1453.0 | 2 | head gasket mm 0.8 -D- |
| 24 | 0.078.1440.3 | 1 | cover |
| 25 | 2.3171.008.4 | 1 | plug 20 |
| 26 | 2.0399.130.2 | 6 | screw m 8 x 30 |
| 27 | 2.1532.035.0 | 6 | oil seal 14x1.78 |
| 28 | 2.6859.052.2 | 2 | clamp |
| 29 | 0.075.1452.0/10 | 1 | sleeve |
| 30 | 0.007.1147.0/10 | 6 | exhaust valve mm 39.1 / Ø mm 9 |
| 31 | 0.009.3877.0/10 | 2 | tappet gasket |
| 32 | 0.336.0057.6 | | gasket set |
| | | | - FOR 1 CYLINDER VALVE GRINDING AND PISTON RINGS REPLACEMENT |
| 33 | 2.1519.117.0 | 12 | special oil seal |

| Fig. | P/n | QTY | Name |
|------|-----|-----|------|
|------|-----|-----|------|

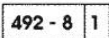
```
2000 <- X TITAN 160 [TITAN 145]
```

| | | | |
|----|-----------------|----|-------------------------------|
| 1 | 2.0312.206.2 | 2 | screw m 8 p 1.25 x 20 |
| 2 | 2.1480.014.1 | 2 | washer 8 |
| 3 | 0.041.1135.4 | 1 | plug 1" gas |
| 4 | 2.1569.072.0 | 1 | gasket 32 x 39.5 x 2 |
| 5 | 0.065.1565.0/10 | 1 | pipe union |
| 6 | 2.1539.042.0 | 1 | special oil seal 47.35x1.78 |
| 7 | 0.065.1567.0/10 | 1 | filter |
| 8 | 2.3339.307.0 | 2 | pipe fitting m 22 p.1.5-3/4" |
| 9 | 0.007.0849.0/10 | 1 | gasket |
| 10 | 0.065.1581.4/20 | 1 | valve |
| 11 | 2.1539.048.0 | 1 | special oil seal 20.35x1.78 |
| 12 | 2.1539.072.0 | 1 | special oil seal 23.52 x 1.78 |
| 13 | 2.0312.215.1 | 2 | screw m 8 p.1.25 x 45 |
| 14 | 0.080.1513.2/10 | 1 | dipstick |
| 15 | 2.1539.065.0 | 2 | special oil seal 8.73 x 1.78 |
| 16 | 2.3199.001.2 | 1 | plug 1/2" gas |
| 17 | 2.1560.054.0 | 1 | gasket 21 x 26 |
| 18 | 2.0112.221.2 | 2 | screw m 8 p.1.25 x 60 |
| 19 | 2.4419.340.0 | 2 | oil filter element |
| 22 | 0.007.0638.2 | 6 | sprayers |
| 23 | 2.1099.108.2 | 6 | special nut m 10 p.1 |
| 24 | 2.1560.006.0 | 12 | gasket 10.2 x 16 |
| 25 | 2.3249.022.2 | 6 | pipe fitting m 10 p.1 |
| 26 | 2.1470.004.2 | 34 | lock washer 8 |
| 27 | 2.0112.237.2 | 2 | screw m 8 p.1.25x140 |
| 28 | 2.0112.215.2 | 25 | screw m 8 p.1.25 x 40 |
| 29 | 0.007.1311.0/10 | 1 | oil sump |
| 30 | 2.0112.229.2 | 3 | screw m 8 p.1.25 x 100 |
| 31 | 0.007.0775.3 | 1 | radiator |
| 32 | 0.007.0878.0 | 2 | gasket |
| 33 | 2.1539.048.0 | 2 | special oil seal 20.35x1.78 |
| 34 | 2.0399.153.2 | 2 | screw m 8 p.1.25 |
| 35 | 2.1480.014.1 | 2 | washer 8 |
| 36 | 2.1480.014.1 | 2 | washer 8 |
| 37 | 2.1560.010.0 | 1 | gasket 14.2 x 20 |
| 38 | 2.0112.235.2 | 2 | screw m 8 p.1.25 x 130 |
| 39 | 2.0112.241.2 | 4 | screw m 8 p.1.25 x 160 |
| 40 | 2.3110.403.1 | 1 | plug m 14 p.1.5x12 |



| Fig. | P/n | QTY | Name |
|------|-----|-----|------|
|------|-----|-----|------|

| | | | |
|----|-----------------|---|-----------------------------------------------------------------------------------------------------------------------------------------|
| 1 | 0.007.1300.3 | 1 | tube |
| 2 | 0.007.1301.3 | 1 | tube |
| 3 | 0.052.1557.0 | 1 | gasket |
| 4 | 0.052.1558.0/10 | 1 | gasket |
| 5 | 2.0312.212.2 | 2 | screw m 8 p.1.25 x 35 |
| 6 | 2.0112.207.2 | 2 | screw m 8 p 1.25 x 20 |
| 7 | 2.1480.014.1 | 2 | washer 8 |
| 8 | 2.1470.004.2 | 2 | lock washer 8 |
| 9 | 2.3339.673.0/10 | 1 | pipe fitting * 1567 <= X TITAN 160 * 1649 <= X TITAN 190 - N.1 - 2.3110.403.7 - 2.1560.009.0 2.1019.129.2/10 - 2.1530.038.0 |
| 10 | 2.3264.021.2 | 1 | pipe fitting m 22 p.1.5 - 1" 1/16 |
| 11 | 0.007.1317.4 | 1 | bracket |
| 12 | 2.3110.403.7 | 1 | plug m 14 p.1.5 |
| 13 | 2.1560.010.0 | 1 | gasket 14.2 x 20 |
| 14 | 2.1019.129.2/10 | 1 | nut m 18 p.1.5x12 |
| 15 | 2.1530.038.0 | 1 | oil seal 15.54x2.62 |

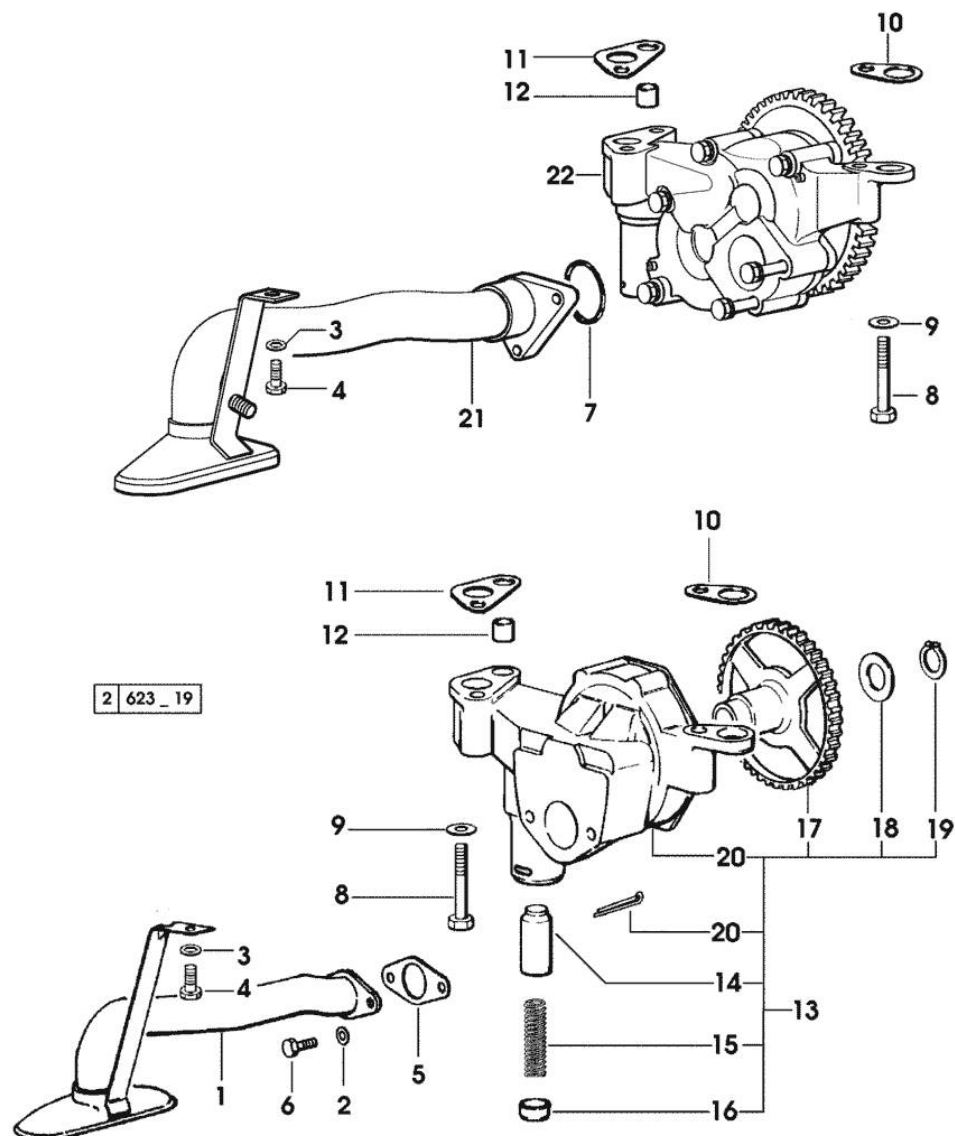


Section: ENGINE
LUBRICATION

| Fig. | P/n | QTY | Name |
|------|-----|-----|------|
|------|-----|-----|------|

Notes:
[TITAN 145]

| | | | |
|----|-----------------|---|---------------------------------------------------------------------------------------|
| 1 | 0.007.1312.3 | 1 | tube (...) <- |
| 2 | 2.1470.004.2 | 2 | lock washer 8 |
| 3 | 2.1470.004.2 | 1 | lock washer 8 |
| 4 | 2.0112.205.2 | 1 | screw m 8 p.1.25 x 16 |
| 5 | 0.007.0997.0 | 1 | gasket (...) <- |
| 6 | 2.0112.207.2 | 2 | screw m 8 p 1.25 x 20 |
| 7 | 2.1539.153.0 | 1 | oil seal 32.99x2.6 -> (...) |
| 8 | 2.0112.322.2 | 3 | screw m 10 p.1.5x65 |
| 9 | 2.1310.006.2 | 3 | flat washer 10.5x21 |
| 10 | 0.007.0972.0 | 2 | shim |
| 11 | 0.007.0973.0 | 2 | shim |
| 12 | 0.007.0867.0 | 1 | bush |
| 13 | 0.000.0000.1 | 1 | cannot be supplied * (...) <- - N.1 - 010.0194.4/30 - 011.0087.4 - 2.1539.153.0 |
| 14 | 0.007.1371.0 | 1 | piston |
| 15 | 0.007.1373.0 | 1 | spring |
| 16 | 0.007.1372.0 | 1 | cup |
| 17 | 0.007.1438.0/10 | 1 | gear |
| 18 | 0.007.1437.0 | 1 | washer |
| 19 | 0.007.1436.0 | 1 | circlip |
| 20 | 0.000.0000.1 | | cannot be supplied |
| 21 | 0.011.0087.4 | 1 | tube -> (...) |
| 22 | 0.010.0194.4/30 | 1 | oil pump -> (...) ☞ 0.010.0194.4/30 ☞ 01.00.40 |



Section: ENGINE

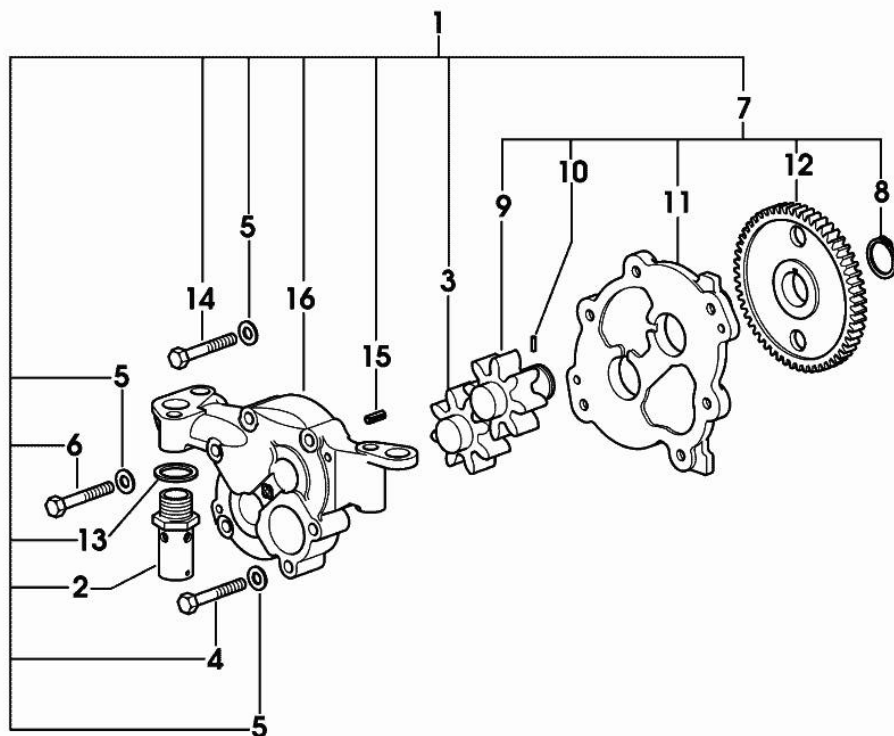
OIL PUMP

| Fig. | P/n | QTY | Name |
|------|-----|-----|------|
|------|-----|-----|------|

Notes:

[TITAN 145]

| | | | |
|----|-----------------|---|-------------------------------|
| 1 | 0.010.0194.4/30 | 1 | oil pump ☞ 0.010.0194.4/30 |
| 2 | 0.007.0866.3/10 | 1 | valve |
| 3 | 0.010.1709.0 | 1 | gear z=8 |
| 4 | 2.0112.220.2 | 2 | screw m 8 p.1.25x55 |
| 5 | 2.1475.002.7 | 6 | washer 8.4 |
| 6 | 2.0112.219.2 | 2 | screw m 8 p.1.25x55 |
| 7 | 0.010.0195.3/20 | 1 | cover |
| 8 | 2.1410.064.7 | 1 | circlip |
| 9 | 0.010.1708.0/20 | 1 | gear z=8 |
| 10 | 2.1651.204.0 | 1 | pin 3x10 |
| 11 | 0.000.0000.1 | | cannot be supplied |
| 12 | 0.000.0000.1 | | cannot be supplied |
| 13 | 2.1560.020.0 | 1 | copper gasket 24.3x32 |
| 14 | 2.0112.217.2 | 2 | screw m 8 p.1.25 x 45 |
| 15 | 2.1630.608.0 | 2 | pin 6x16 |
| 16 | 0.000.0000.1 | | cannot be supplied |

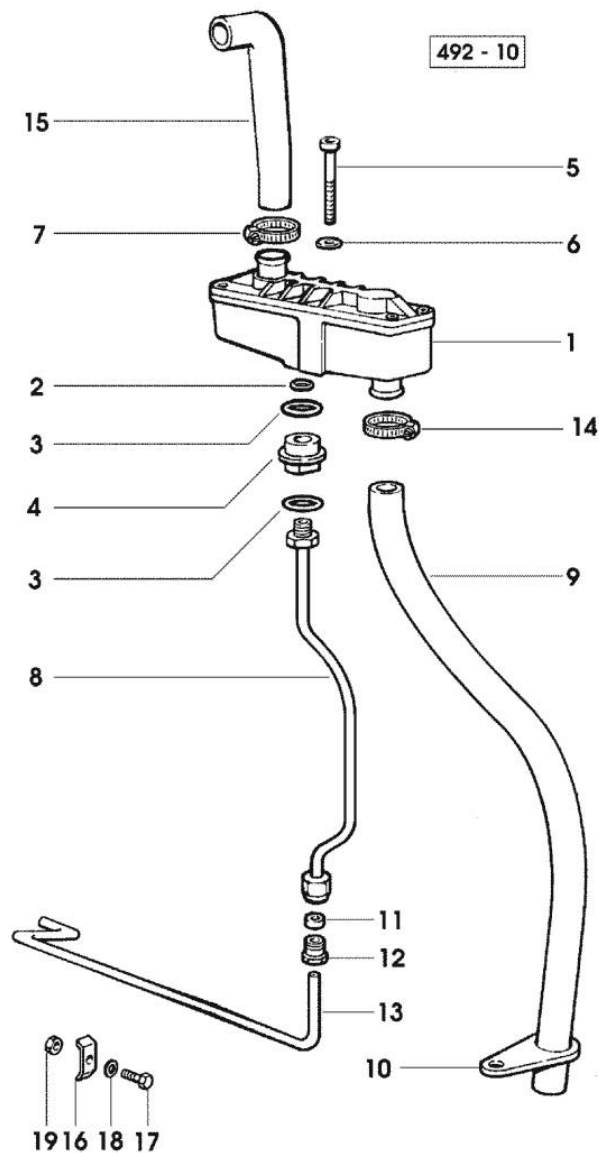


0_010_0194_4_30

Section: ENGINE
LUBRICATION

| Fig. | P/n | QTY | Name |
|------|-----|-----|------|
|------|-----|-----|------|

Notes:
 [TITAN 145]



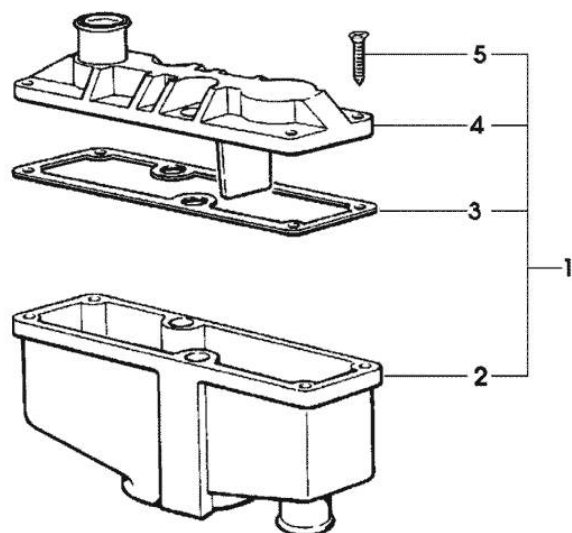
| | | | |
|----|-----------------|---|-------------------------------|
| 1 | 0.075.1557.4 | 1 | sediment bowl |
| 2 | 2.1560.008.0 | 1 | gasket 12.2 x 18 |
| 3 | 2.1539.072.0 | 2 | special oil seal 23.52 x 1.78 |
| 4 | 0.075.1553.0 | 1 | bush |
| 5 | 2.0312.221.2 | 2 | screw m 8 p.1.25x75 |
| 6 | 2.1480.014.1 | 2 | washer 8 |
| 7 | 2.6859.086.0 | 2 | clamp |
| 8 | 0.007.0861.0 | 1 | tube |
| 9 | 0.075.1554.0 | 1 | tube |
| 10 | 0.075.1151.0 | 1 | bracket |
| 11 | 2.3350.003.1 | 1 | nosepiece 8 |
| 12 | 2.3339.418.1 | 1 | pipe fitting m 12 p.1 |
| 13 | 0.007.0970.0 | 1 | tube |
| 14 | 2.6859.086.0 | 1 | clamp |
| 15 | 0.075.1453.0/10 | 1 | tube |
| 16 | 0.002.8816.0 | 1 | small plate |
| 17 | 2.0112.007.2 | 1 | screw m 6 p.1 x 20 |
| 18 | 2.1310.002.2 | 1 | flat washer 6.4x12.5 |
| 19 | 2.1011.103.2 | 1 | nut m 6 p.1 |

OIL VAPORS SEDIMENT BOWL PARTS

| Fig. | P/n | QTY | Name |
|------|-----|-----|------|
|------|-----|-----|------|

Notes:

[TITAN 145]



| | | | |
|---|--------------|---|-----------------|
| 1 | 0.075.1557.4 | 1 | sediment bowl |
| 2 | 0.075.1558.3 | 1 | old part number |
| 3 | 0.075.1559.0 | 1 | gasket |
| 4 | 0.075.1557.3 | 1 | old part number |
| 5 | 2.0351.203.2 | 4 | screw 3.5x9.5 |

| |
|------------|
| 075.1557.4 |
| 492 - 11 |

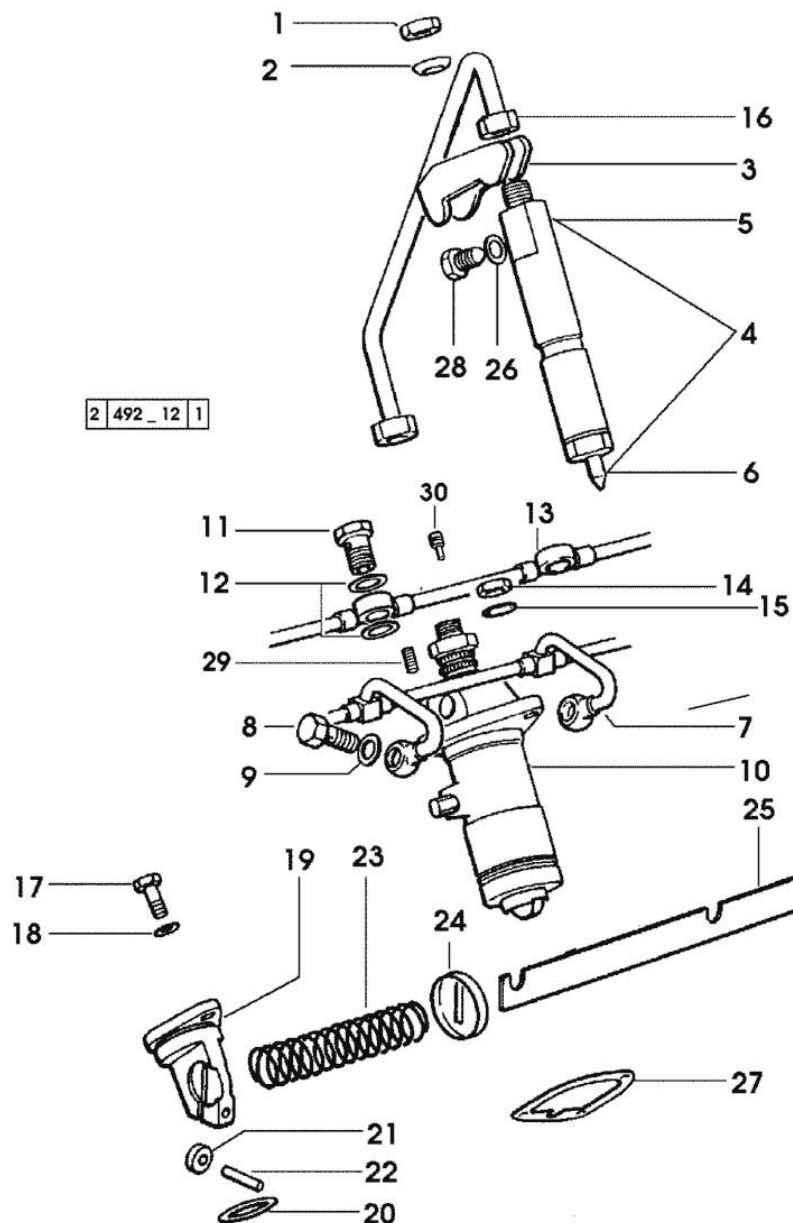
Section: ENGINE

FUEL SUPPLY SYSTEM

| Fig. | P/n | QTY | Name |
|------|-----|-----|------|
|------|-----|-----|------|

Notes:
[TITAN 145]

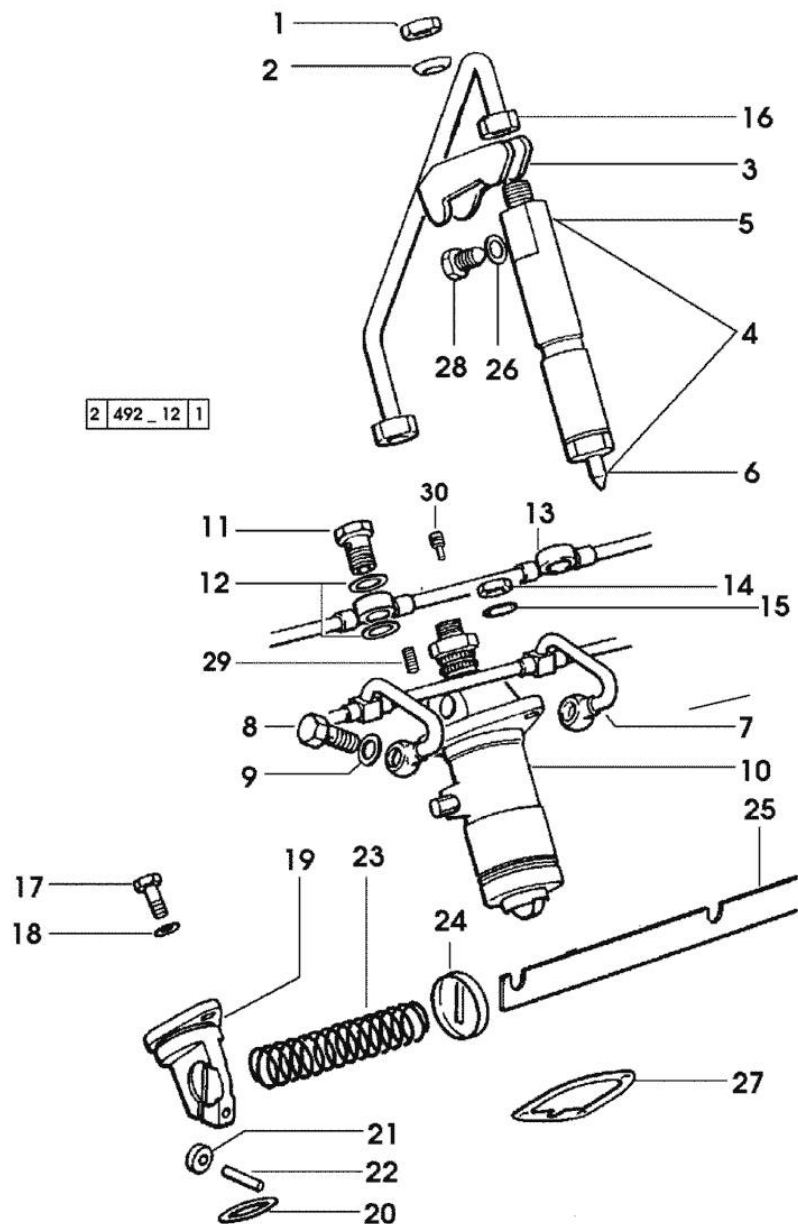
| | | | |
|----|-----------------|----|----------------------------------------------------------------------------------------------------------------------------|
| 1 | 2.1011.421.2 | 6 | nut m 10 p.1.25 |
| 2 | 2.1599.454.0 | 6 | shoulder ring 10.5x17x7.5 |
| 3 | 0.011.5275.0/20 | 6 | bracket |
| 4 | 2.4719.280.0 | 6 | injector assembly BOSCH |
| 4 | 2.4719.330.0 | | injector assembly - X TITAN 160 - TITAN 190 - EXPORT U.S.A. |
| 5 | 2.4719.190.0 | 6 | nozzle holder BOSCH ☞ 2.4719.190.0 ☞ 01.00.73 |
| 6 | 2.4729.140.0 | 6 | nozzle BOSCH |
| 6 | 2.4729.180.0/10 | | nozzle - X TITAN 160 - TITAN 190 - EXPORT U.S.A. |
| 7 | 0.007.1789.3/10 | 1 | tube |
| 8 | 2.3339.001.2 | 6 | pipe union m 10 p.1x27 |
| 9 | 2.1560.005.0 | 12 | copper gasket 10.2 x 14 |
| 10 | 2.4619.060.0/10 | 6 | injector pump * 1408 <= X TITAN 160 * 1516 <= X TITAN 190 - N.1 - 2.0512.102.7 ☞ 2.4619.060.0/10 ☞ 01.00.70 |
| 11 | 2.3339.118.1 | 6 | pipe union m 12 p.1.5 |
| 12 | 2.1560.008.0 | 12 | gasket 12.2 x 18 |
| 13 | 0.007.0091.3 | 1 | tube 2000 <- X TITAN 160 |
| 13 | 0.007.1393.3 | 1 | tube -> 2001 X TITAN 160 - X TITAN 190 |
| 14 | 2.1011.405.2 | 18 | nut m 8 p.1 |
| 15 | 2.1599.458.0/10 | 18 | shoulder ring 8.4x18x2 |
| 16 | 0.078.1650.3 | 6 | tube |
| 17 | 2.0112.207.2 | 3 | screw m 8 p 1.25 x 20 |
| 18 | 2.1470.004.2 | 3 | lock washer 8 |
| 19 | 0.065.1693.0/20 | 3 | support |
| 20 | 2.1530.072.0 | 3 | oil seal 26.70x1.78 |
| 21 | 0.065.1660.0 | 2 | roller |
| 22 | 2.1652.507.0 | 2 | pin 6x16 |
| 23 | 2.4019.314.1/20 | 1 | spring 21.5x76x1 |
| 24 | 0.065.1659.0 | 1 | stop |



Section: ENGINE

FUEL SUPPLY SYSTEM

| Fig. | P/n | QTY | Name |
|------|-----------------|-----|-------------------|
| 25 | 0.075.1613.3/10 | 1 | rod |
| 26 | 2.1560.001.0 | 6 | gasket 6.2x10 |
| 27 | 0.065.1655.0/10 | 12 | shim mm 0.1 |
| 27 | 0.065.1656.0/10 | 24 | shim mm 0.20 |
| 28 | 2.3119.024.2 | 6 | plug m 6 |
| 29 | 2.0512.102.7 | 6 | screw m 6 p.1 x 8 |
| 30 | 2.3199.270.0 | | plug 5.9x7.8 |



Thank you so much for reading.
Please click the “Buy Now!”
button below to download the
complete manual.



After you pay.

You can download the most
perfect and complete manual in
the world immediately.

Our support email:

ebooklibonline@outlook.com