

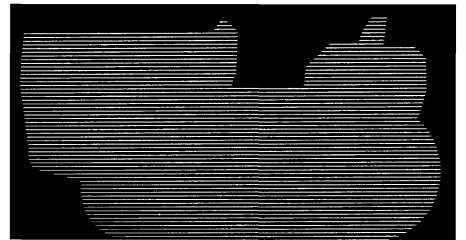
**Fiat**

**55-85 55-85**  

**Operator's Manual**

**60-85**  

**steering-O-matic**



**FIATAGRI**

Reprinted

**06910176**

## **Fiatagri. One exclusive vocation: Agriculture**

The Fiatagri brand name stands today for the most complete and exhaustive line of agricultural machinery products on the market.

FIATAGRI sums up all the image and prestige of the trademarks representing it out in the field: FIAT tractors, Laverda combine harvesters, Hesston hay and forage harvesting machines and Braud multi-purpose trailed and self-propelled grape harvesters.

That is why Fiatagri, with the most complete and advanced full-line in Europe, is a real specialist, responsible for the design, engineering, manufacturing and marketing of all of its product lines.

Being part of the FIAT Group, it avails itself of the accompanying resources and scale economies to achieve always further results in product development.

Experience, tradition and constant innovation are the major features which have made possible for the Fiatagri products to become undisputed, foreline protagonists on the world scene, as witnessed by the high-standing image and preference accorded by farmers everywhere.



**FIAT**

**55-85**

**55-85**



**60-85**

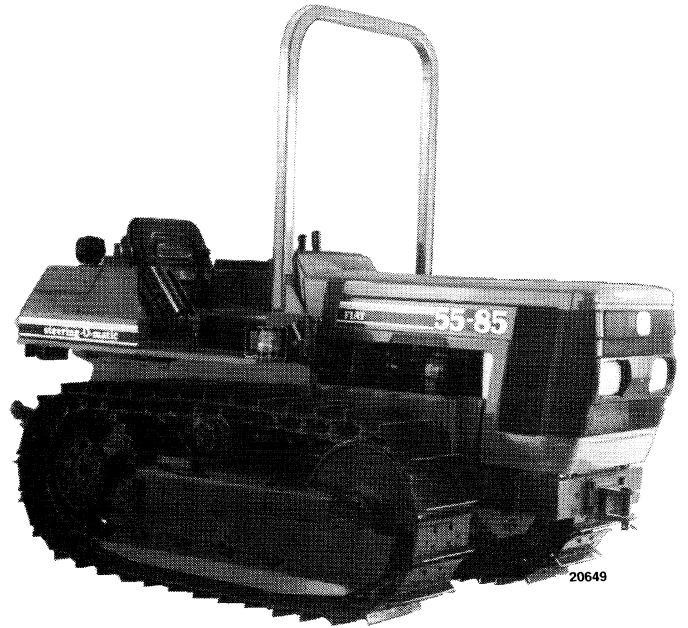


**steering-O-matic**

*OPERATION*

*MAINTENANCE*

*SPECIFICATIONS*



20649

## WORK SAFELY - ALWAYS



This warning sign alerts you about important messages involving your safety.

Read these safety rules attentively and strictly follow suggested precautions designed to avoid any potential danger and safeguard your health and personal safety.

You will find, throughout this Manual, the above warning sign associated with the following keywords:

**CAUTION** - A warning intended to prevent potential damages to the machine which might involve operator's safety.

**DANGER** - Associated with warnings for specific potential danger to the repairman and to any other people directly or indirectly involved.



### **IMPORTANT NOTICES**



This tractor has been designed and manufactured specifically and solely for agricultural use.

Any other application will be considered non compatible with the use envisaged by the Manufacturer, who, consequently, cannot be held responsible for any damage to things or to the machine itself or for any physical injury to people deriving from uses other than agricultural ones. Always consider that with the improper use of this tractor you would also assume the personal responsibility for any consequence associated with it.

The respect of the rules for tractor use, maintenance and repairs given in this Manual is an essential element qualifying the correct use of the machine as envisaged by the Manufacturer. This machine must be used, serviced or repaired only by people previously instructed on its handling features and safety rules besides being specifically authorized to operate it.

The user is always responsible for the strict observance of general safety and accident prevention rules as well as of the traffic regulations if driving the tractor on public or open roads. Any un-authorized and arbitrary modification made on this machine will relieve the Manufacturer of all responsibilities for any deriving damage or injury.

The Manufacturer and all the Organizations associated with its distribution network, including but not limited to national, regional or local distributors, decline any and all responsibilities for damages that may derive from the abnormal performance and behaviour of machine parts or components not specifically authorized by the Manufacturer, including the ones used for the maintenance and/or repair of products fabricated or distributed by the Manufacturer.

In any case, no warranty of any sort is issued or prescribed, regarding products fabricated or distributed by the Manufacturer, against damages deriving from abnormal behaviour of parts and/or components not authorized by the same Manufacturer.

## Spares and after-sales service always close at hand

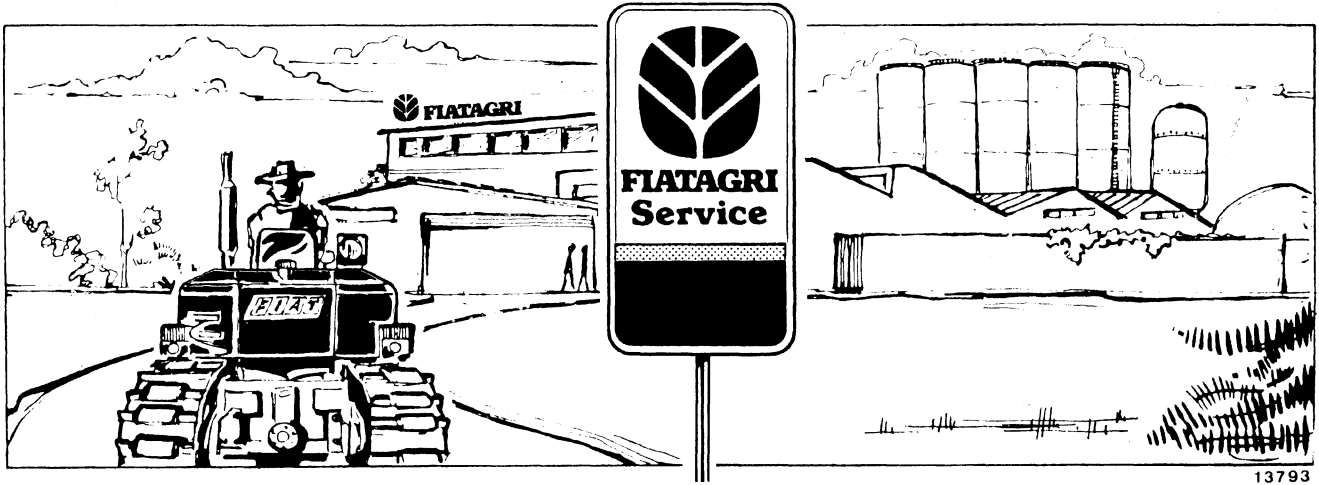
When you buy a Fiatagri agricultural machine, you also get something that does not catch the eye, but may well prove its worth in the future, namely the company's large and efficient after-sales and spares organization. At the San Matteo (Modena) spares center, a highly modern installation with 32,000 m<sup>2</sup> under roof and equipped with electronic

handling and retrieval systems, a total of 21 million spare parts of more than 220,000 different items are held in store. The Center can handle up to 6,000 orders per day.

The superior quality of its original spare parts — added to Fiatagri's efficient organization and fast service — is the quality that ensures that a Fiatagri agricultural machine never loses its value as time goes by.



 **FIATAGRI**



## **Service**

An extended network of **FIATAGRI DEALERS**, equipped with all necessary means to perform any repair and overhaul work, is at your disposal.

Turn to these Dealers in full confidence. You will benefit from the assistance and know-how of skilled servicemen.

FIATAGRI's experience is at your service to help you solve any problem related to tractor operation and use.

## **Spare Parts**

*Use genuine FIATAGRI parts only.  
Failure to do this will:*

- Cost you more.*
- Not result in complete satisfaction.*
- Seriously risk improper functioning of the tractor.  
Original spares are sold by the FIAT Sales and Service  
Organization.*

*In all orders be sure to quote (see page 7):*

- Tractor Model and Frame Number.*
- Engine Type and Number.*
- The Part No. of the spare needed (listed in the Spare  
Parts Catalogue).*

## **Maintenance**

*These tractors were designed with the owner in mind and  
an effort has been made to simplify maintenance.*

*The purpose of this manual is to familiarize the operator  
with the operation and regular servicing of the tractor.*

*Remember that the time spent on maintenance extends the  
life of your tractor.*

*Pay special attention to the instructions covering fuel  
filtering, air cleaner maintenance and lubrication:  
remember that badly filtered fuel results in injection system  
deterioration and irregular air cleaner maintenance leads to  
premature engine wear, and reckon that a tractor oil change  
every 200 hours is equivalent to a truck oil change every  
8,000-9,000 km (5000-5500 mi).*

## **Panelling maintenance**

### **Weathering Protection**

Fiatagri has long since introduced a number of provisions aimed at improving tractor protection against deterioration and corrosion phenomenal, resulting from various external factors, some of which are listed below:

- atmospheric salinity and humidity;
- air pollution (industrial area);
- abrasive action by solid particles;
- use of machine in conditions where organic and/or chemical aggressive agents are present;
- physical damages such as dents, abrasions and deep scoring marks.

The technical remedies adopted were:

- Use of high corrosion resistant zinc-plated steel panels;
- painting systems and products selected to make the tractor meet particular corrosion and abrasion resistance requirements;
- application of adequate hardening plastic protective coatings in all

areas known to be more easily exposed to corrosion factors (sheet metal edges, welded overlaps and joints);

- application of specific waxy products as protectants for tractor outdoor storage.

Unfortunately, the weathering agents react differently in relation to the varying environmental and owner use conditions: for this reason, if you devote adequate care to your machine you can contribute in a determinant way to the preservation of the tractor.

The following points were laid down with this basic concept in mind.

### **Panelling**

When abrasions or deep scoring marks baring the metal underneath are present, immediate remedial action is necessary by paintwork touchups using genuine products, as follows:

- sand area involved accurately;
- apply primer;

- allow to flashoff and sand again, this time lightly;
- apply paint;
- polish to restore original gloss.

Hose down equipment regularly in relation to work conditions and environment. Wash more frequently in seaside and heavily polluted areas, and **immediately** after exposure to organic materials or chemicals.

Use low pressure water hose, sponge down with light detergent solution (2 to 4% in water). Rinse sponge frequently, rinse equipment thoroughly and dry with compressed air, if possible.

Do not wash equipment after prolonged exposure to sunlight or immediately after stopping engine. Allow parts to be washed to cool down, otherwise paintwork gloss will be adversely affected. To preserve gloss, apply a light coat of silicone wax occasionally.

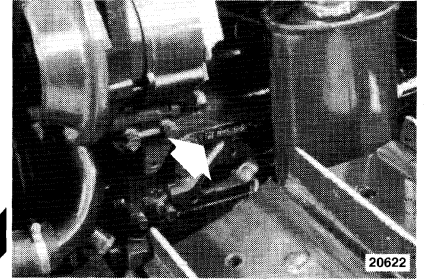
Apply polish to remove traffic film.



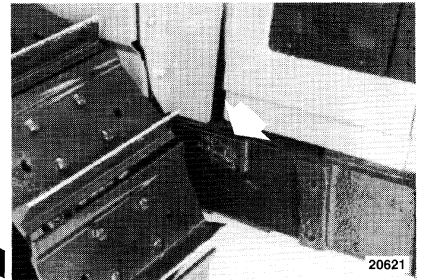
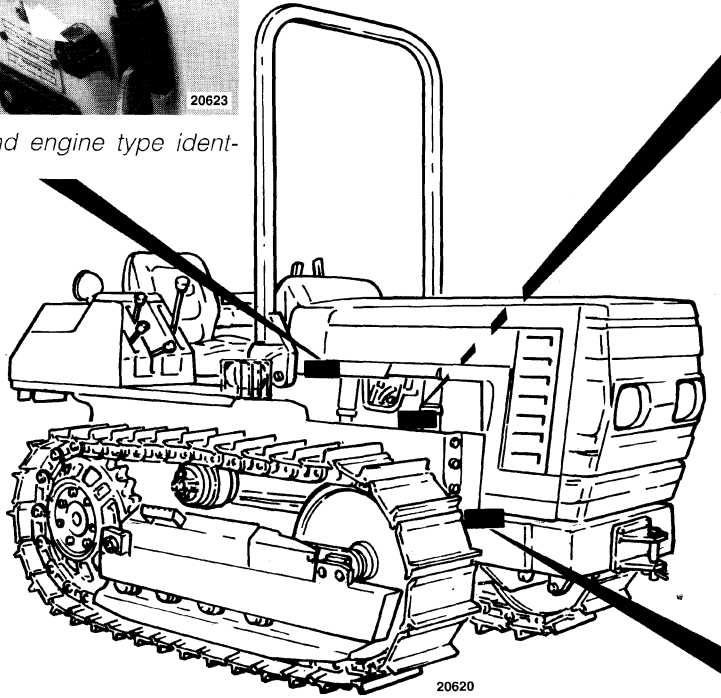


Frame data and engine type identification plate.

## Tractor identification data:



Engine type and serial number.



Frame type and serial number.

Thank you so much for reading.  
Please click the “Buy Now!”  
button below to download the  
complete manual.



After you pay.

You can download the most  
perfect and complete manual in  
the world immediately.

Our support email:

[ebooklibonline@outlook.com](mailto:ebooklibonline@outlook.com)