

# **H/HV Tractors**

## **Operators Manual**

**1004203R4**

Reprinted

**CASE III**



***This symbol means ATTENTION! BECOME ALERT! YOUR SAFETY IS INVOLVED. The message that follows the symbol contains important information about your safety. Carefully read the message. Make sure you fully understand the causes of possible injury or death.***

SB001

IF THIS MACHINE IS USED BY AN EMPLOYEE, IS LOANED, OR IS RENTED, MAKE SURE THAT THE OPERATOR UNDERSTANDS THE TWO INSTRUCTIONS BELOW.

BEFORE THE OPERATOR STARTS THE ENGINE:

1. GIVE INSTRUCTIONS TO THE OPERATOR ON SAFE AND CORRECT USE OF THE MACHINE.
2. MAKE SURE THE OPERATOR READS AND UNDERSTANDS THE OPERATOR'S MANUAL FOR THIS MACHINE.



**IMPROPER OPERATION OF THIS MACHINE CAN CAUSE INJURY OR DEATH.**

BEFORE STARTING THE ENGINE, DO THE FOLLOWING:

1. READ THE OPERATOR'S MANUAL.
2. READ ALL SAFETY DECALS ON THE MACHINE.
3. CLEAR THE AREA OF OTHER PERSONS.

LEARN AND PRACTICE SAFE USE OF MACHINE CONTROLS IN A SAFE, CLEAR AREA BEFORE YOU OPERATE THIS MACHINE ON A JOB SITE.

It is your responsibility to observe pertinent laws and regulations and to follow manufacturer's instructions on machine operation and maintenance.

See your Authorized Case dealer for additional operator's manuals, parts catalogs, and service manuals.

## TO THE OWNER

The purpose of this manual is to assist you in realizing the benefits you anticipated when you purchased this International Harvester product. Literally thousands of people have contributed to the design and production of this product and its delivery to you. They have an interest in its successful performance and have provided this manual to give you the benefit of the experience they have gained through years of field testing and normal usage of this and similar products.

The way you operate and the care you give this product will have much to do with its successful performance. This manual has been carefully prepared and the information arranged and illustrated to make it as easy as possible for you to find the information you wish. It will pay you to read the entire manual carefully before operating and keep it handy for future reference. Your International Harvester Dealer will be glad to answer any further questions you may have on the operation or care of this product.

---

It is the policy of International Harvester Company to improve its products whenever it is possible and practical to do so. We reserve the right to make changes or add improvements at any time without incurring any obligation to make such changes on products sold previously.

---

**All illustrations and descriptive matter in this publication apply to International Harvester products sold under the International, McCormick, McCormick-International, McCormick-Deering, or McCormick-Deering International trade name.**

**IMPORTANT FUEL SYSTEM SAFETY WARNING  
AND  
ANNOUNCEMENT OF FREE, REPLACEMENT GASOLINE CAP**



**CAUTION!** The following information pertains to personal safety. Be sure to read and follow these instructions.

**PROBLEM — Gasoline vapors can build up pressure in your gasoline tank.**

All gasoline fuels are more volatile today than ever before. They vaporize and build up pressure in your gasoline tank more easily than in the past. Winter grade gasoline is especially subject to vaporization and pressure build-up when used on hot Spring or Fall days. If you have a tractor which is out of tune or not properly maintained, it can run hotter and increase vaporization.

**DANGER — Fire and personal injury.**

If the fuel cap is removed when the gasoline tank is hot and vapor pressure has, under certain circumstances, built up in the tank, this sudden release of pressure could force gasoline out of the tank. If the gas cap is not fully secured and tightened, it could come off the tank, and again, gasoline could escape. This sudden eruption of gasoline exposes the operator to, and may cover him with, liquid fuel and vapors and is a clear fire hazard if a source of ignition is present. A running engine is a source of ignition, as are cigarettes, open flames, sparks or a poorly maintained exhaust system. **An immediate fire could occur.** The operator or anyone in the area could be burned and suffer serious injury or even death.

**PRECAUTIONS — Observe the following steps for safe operation:**

- Always tighten gas caps securely.
- Never, under any circumstances, take the gas cap off a hot or running tractor.
- Never hold over Winter gasoline for use in the Spring. Remove any equipment unnecessary for warm weather operations, such as comfort covers, heat housers, or radiator covers.
- Maintain equipment properly and pay particular attention to electrical, exhaust, fuel, and cooling systems. Repair or replace frayed electrical wires; leaky exhaust manifolds, gaskets, pipes and mufflers; damaged carburetors, sediment bowls and fuel lines. Be sure radiators are clean inside and out. Clean off any accumulation of trash, oil or grease.
- Make sure that fuel cap vent holes are not plugged, gaskets are in good condition, and that cap tangs are firmly riveted. Repair worn, bent, or deformed filler necks and damaged heat shields or shield insulation. If your tractor is not equipped with a heat shield or insulation, install such equipment on applicable models.
- Be alert to any unusual sights and sounds during operation. If you suspect overheating or pressure build-up in the fuel system, do not touch the cap. Turn off the engine and allow the tractor to cool before you touch the cap.

**FREE GASOLINE CAP — See your dealer today.**

International Harvester has developed a new gasoline cap designed to improve vapor venting and to inhibit the sudden eruption of liquid fuel if the safety precautions against cap removal are not observed.

New caps will be exchanged **free of charge** with owners of certain models of International Harvester farm tractors. To see whether your tractor already has the new cap or to arrange to obtain one, simply contact your local International Harvester dealer. Also ask him for a free International Harvester brochure "New Facts About Fuels" and for free "Warning" decals for all gasoline equipment.

Gasoline Tractor Models Included in Cap Exchange Program (See Note)			
A	100	*504	2404
AV	130	F-544 Only	2424
B	140	560	2444
BN	200	600	2504
C	230	*606	2544
H	240	650	*2606
HV	300	F-656 Only	2706
M	330	660	2756
MV	340	666	2806
O	350	686	2826
OS	400	706	2856
W	404	756	
WR	424	766	
70	444	806	
86	450	826	
	460	856	

**NOTE:** New cap **will not** fit on any of these tractors,

B-275	I-434
B-276	I-544
I -284	I-656
I -354	I-2656
B-414	

\*New cap **will not** fit on these tractors above serial numbers shown.

F-504 above serial No. 13400
I -504 above serial No. 14272
I -606 above serial No. 6879
I -2606 above serial No. 6879

New cap **will not** fit on any lawn and garden tractor in the Cadet model series or on any tractor with the gasoline tank behind the operator's seat.

# CONTENTS

Description	Page No.
<b>INTRODUCTION</b>	
Delivery report (to be filled in when tractor is delivered).....	Inside
General.....	Front Cover
Serial numbers, engines and chassis.....	2
<b>DESCRIPTION</b>	
Before starting your new tractor.....	7
Instruments and controls.....	4 to 6
Preparing the tractor for each day's work.....	8
Views of the tractor.....	3
<b>OPERATING YOUR TRACTOR</b>	
Driving the tractor.....	14 to 16
Operating a gasoline engine.....	10
Operating a distillate engine on distillate.....	11 to 13
Operating a distillate engine on gasoline.....	13, 14
Operating a kerosene engine.....	13
Operating the belt pulley and power take-off.....	16, 17
Operating the Farmall Hydraulic Lift-All system.....	17 to 19
<b>LUBRICATION</b>	
Engine and chassis lubricant specifications.....	29
General engine lubrication.....	20
Greasing the front wheels.....	30
Lubrication guide.....	22 to 28
Lubricating oil and grease specifications.....	30
Oil filter.....	20, 21
<b>MAINTENANCE</b>	
Adjustable wide front axle.....	64 to 67
Air cleaning system.....	38
Battery ignition unit.....	39 to 42
Brakes.....	59
Carburetor.....	32, 33
Clutch.....	60
Cold weather precautions.....	34
Cooling system.....	35 to 37
Cranking motor.....	49 and 54
Drawbar and hitch.....	60, 61
Fuel strainer.....	32
Generator.....	48 and 52
Hydraulic Lift-All system.....	72, 73
Magneto (tractors so equipped).....	42 to 45
Periodic inspections.....	31, 32
Pneumatic tires.....	70 to 72
Spark plugs and cables.....	39
Starting and lighting equipment (tractors with battery ignition and voltage regulation).....	46 to 51
Starting and lighting equipment (tractors without voltage regulation).....	51 to 55
Storage battery.....	56 to 57
Storing and housing your tractor.....	78
Trouble shooting.....	74 to 77
Valve clearance adjustment.....	58
Wheels.....	61 to 69
Wiring diagrams (starting and lighting).....	50 and 55
<b>SPECIAL EQUIPMENT.....</b>	<b>80 to 94</b>
<b>SPECIFICATIONS.....</b>	<b>95, 96</b>
<b>COMPREHENSIVE INDEX.....</b>	<b>97, 98</b>

# INTRODUCTION

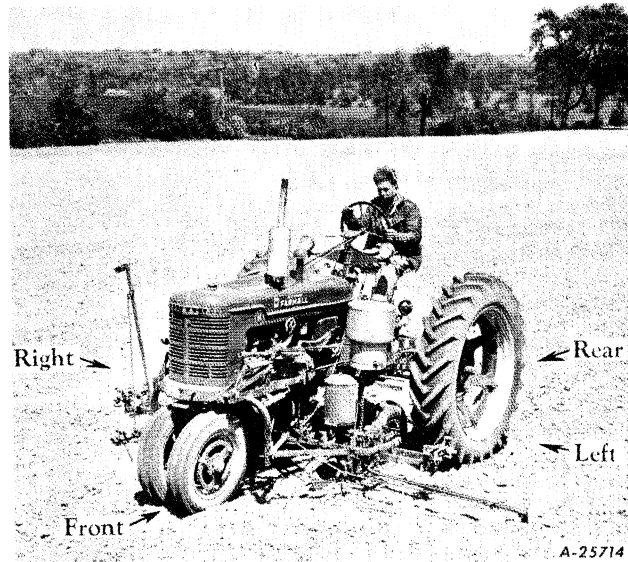
Assembled in this book are operating and maintenance instructions for the Farmall H and HV. This material has been prepared in detail in the hope that it will prove helpful to you in providing a better understanding of the correct care and efficient operation of your tractor.

If you should need information not given in this manual, or require the services of a trained mechanic, get in touch with the International Harvester dealer in your locality. Dealers are kept informed on the latest methods of servicing tractors. They carry stocks of IH parts, and are backed in every case by the full facilities of a nearby International Harvester District Office.

Throughout this manual the use of the terms LEFT, RIGHT, FRONT, and REAR must be understood to avoid confusion when following instructions. LEFT and RIGHT indicate the left and right sides of the tractor when facing forward in the driver's seat. Reference to FRONT indicates the radiator end of the tractor, and REAR the drawbar.

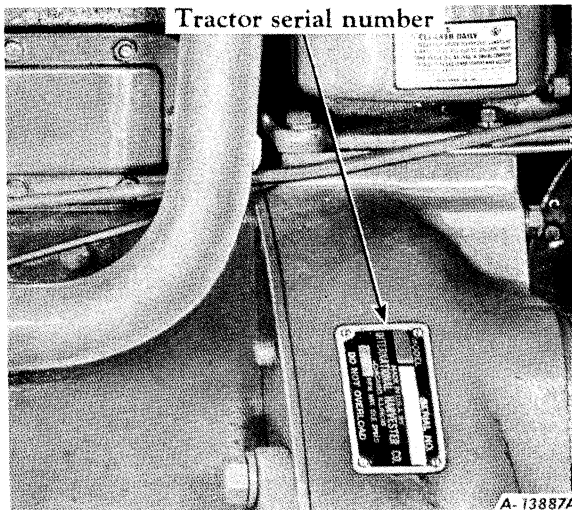
The illustrations in this manual are numbered to correspond with the pages on which they appear; for example, *Illusts. 6 and 6A are on page 6.*

When in need of parts, always specify the tractor and engine serial numbers. The tractor serial number is stamped on a name plate attached on the left side of the clutch housing. The serial number is preceded by the letters FBH for the Farmall H and FBHV for the Farmall HV. *See Illust. 2.* The engine serial number is stamped on the right side

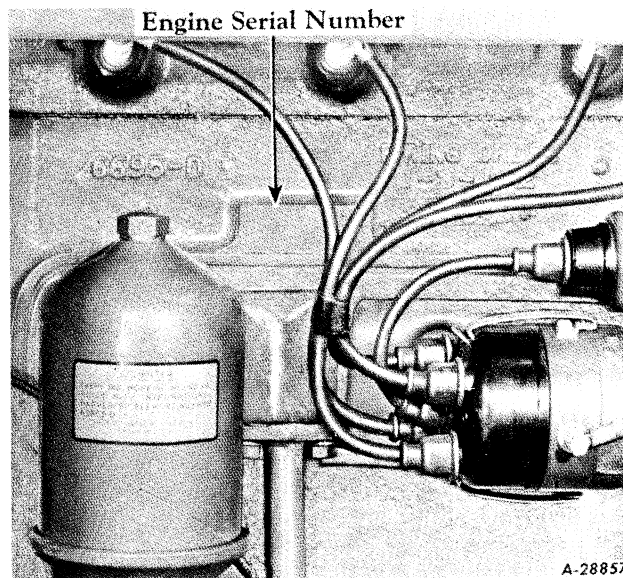


of the engine crankcase above the battery ignition unit. This serial number is preceded by the letters FBHM for the Farmall H and FBHVM for the Farmall HV. *See Illust. 2A.*

For ready reference we suggest that you write these serial numbers in the spaces provided below. The prefix letters printed in the boxes below are for the Farmall H; for the Farmall HV, change them accordingly.

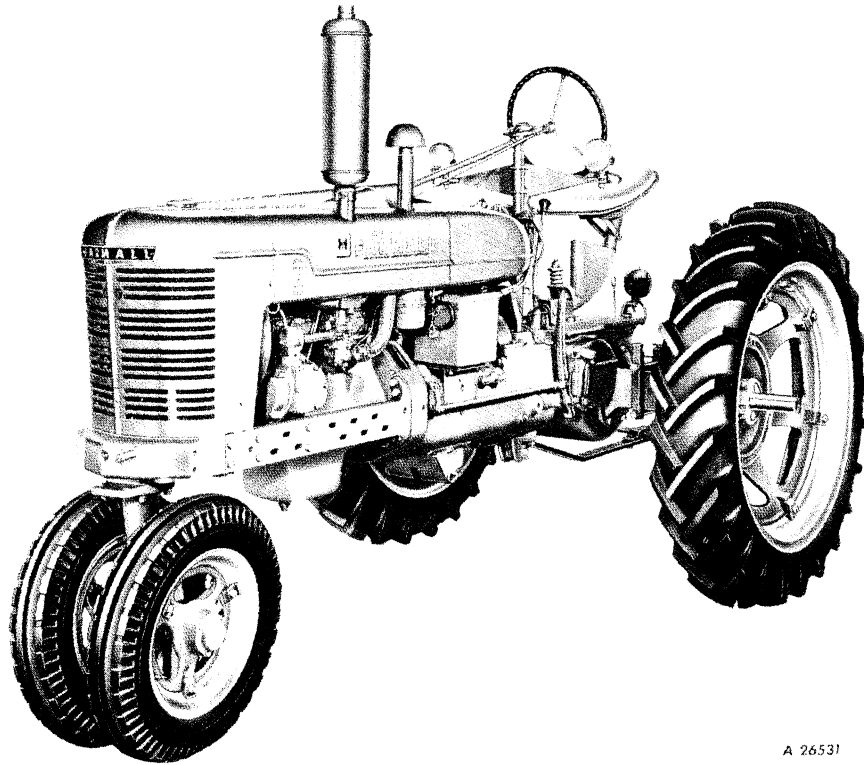


**Illust. 2**  
Location of tractor serial number.



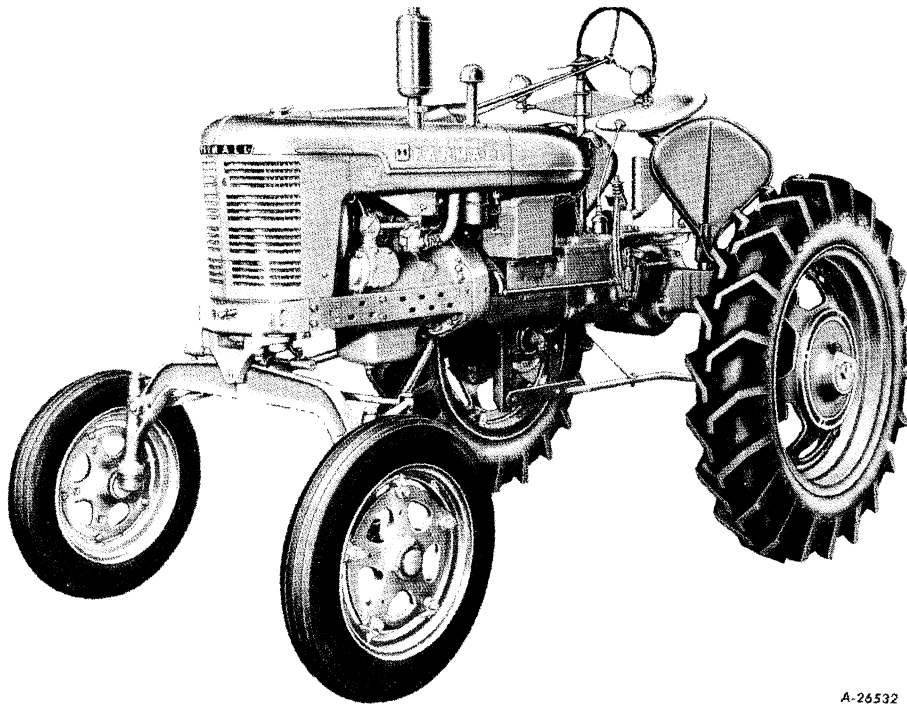
**Illust. 2A**  
Location of engine serial number.

# DESCRIPTION



A 26531

Illust. 3  
Left front view of the Farmall H.



A-26532

Illust. 3A  
Left front view of the Farmall HV.



**Buy Now**



Our support email:

[ebooklibonline@outlook.com](mailto:ebooklibonline@outlook.com)