

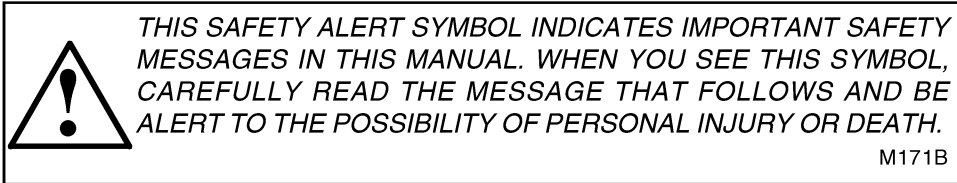
# International 600 Diesel Tractor

## Operators Manual

1004458R1

Reprinted




**CASE III**



If Safety Decals on this machine use the words **Danger, Warning or Caution**, which are defined as follows:

- **DANGER:** Indicates an immediate hazardous situation which if not avoided, will result in death or serious injury. The color associated with Danger is RED.
- **WARNING:** Indicates an potentially hazardous situation which if not avoided, will result in serious injury. The color associated with Warning is ORANGE.
- **CAUTION:** Indicates an potentially hazardous situation which if not avoided, may result in minor or moderate injury. It may also be used to alert against unsafe practices. The color associated with Caution is YELLOW.

If Safety Decals on this machine are ISO two panel Pictorial, decals are defined as follows:

- The first panel indicates the nature of the hazard.
- The second panel indicates the appropriate avoidance of the hazard.
- Background color is YELLOW.
- Prohibition symbols such as   and  if used, are RED.



# WARNING

IMPROPER OPERATION OF THIS MACHINE CAN CAUSE INJURY OR DEATH. BEFORE USING THIS MACHINE, MAKE CERTAIN THAT EVERY OPERATOR:

- Is instructed in safe and proper use of the machine.
- Reads and understands the Manual(s) pertaining to the machine.
- Reads and understands ALL Safety Decals on the machine.
- Clears the area of other persons.
- Learns and practices safe use of machine controls in a safe, clear area before operating this machine on a job site.

It is your responsibility to observe pertinent laws and regulations and follow Case Corporation instructions on machine operation and maintenance.

# *Operator's Manual*



**INTERNATIONAL®**

**600**

**Diesel Tractor**

**INTERNATIONAL HARVESTER COMPANY**

180 North Michigan Ave.

Chicago 1, Illinois, U. S. A.

## TO THE OWNER

The purpose of this manual is to assist you in realizing the benefits you anticipated when you purchased this International Harvester product. Literally thousands of people have contributed to the design and production of this product and its delivery to you. They have an interest in its successful performance and have provided this manual to give you the benefit of the experience they have gained through years of field testing and normal usage of this and similar products.

The way you operate and the care you give this product will have much to do with its successful performance. This manual has been carefully prepared and the information arranged and illustrated to make it as easy as possible for you to find the information you wish. It will pay you to read the entire manual carefully before operating and keep it handy for future reference. Your International Harvester Dealer will be glad to answer any further questions you may have on the operation or care of this product.

---

It is the policy of International Harvester Company to improve its products whenever it is possible and practical to do so. We reserve the right to make changes or add improvements at any time without incurring any obligation to make such changes on products sold previously.

---

All illustrations and descriptive matter in this publication apply to International Harvester products sold under the International, McCormick, McCormick-International, McCormick-Deering, or McCormick-Deering International trade name.

# TECHNICAL PUBLICATIONS AVAILABLE

Your International Harvester Dealer and his factory trained servicemen are best qualified to service your equipment. Up-to-date instructions and adequate special tools are also a part of your Dealer's service facilities.

This Operator's Manual was prepared to instruct you in proper operation and maintenance of your equipment. If you desire additional information you may purchase Service Manuals and/or Parts Catalogs. Additional copies of the Operator's Manual are also available.

Fill out the order blank and forward together with your check or money order in the appropriate amount (U.S. Funds) to:

International Harvester Company

PRINTING AND  
DISTRIBUTION SERVICES

807 Blackhawk Drive

Westmont, Illinois 60559

Attention: Cashier

-----Cut Along This Line-----

Title	Number	Qty.	Price Each
<b>Operator's Manual</b>			
<b>Tractors</b>			
International 600 . . . . .	1 004 457 R1		4.40
International 600 Diesel . . . . .	1 004 458 R1		5.00
<b>Parts Catalogs</b>			
<b>Tractors</b>			
International 600 . . . . .	TC-63		7.70
International 600 Diesel . . . . .	TC-63		7.70
<b>Service Manuals</b>			
<b>Testing and Servicing</b>			
Electrical Equipment . . . . .	GSS-1052-C		3.00
Clutches and Springs . . . . .	GSS-1281-K		2.00
Carburetor Specifications . . . . .	GSS-1309		1.00
<b>Tractor Maintenance</b>			
And Tune-Up . . . . .	GSS-1333-A		2.50
Engine Tune-Up			
Specifications Handbook . . . . .	GSS-1356		4.00
Measuring Fuel Consumption			
Diesel Engine . . . . .	GSS-1393		1.00
Torsion Bar Sensing Hitch			
Adjustments Handbook . . . . .	GSS-1403		1.00

Cut Along This Line

**TOTAL** \_\_\_\_\_

Please Print

Name \_\_\_\_\_

Street Address \_\_\_\_\_

City \_\_\_\_\_

State \_\_\_\_\_

Zip Code \_\_\_\_\_

Date \_\_\_\_\_

Signed \_\_\_\_\_

Do not send cash or stamps

*Prices subject to change without notice.*

# CONTENTS

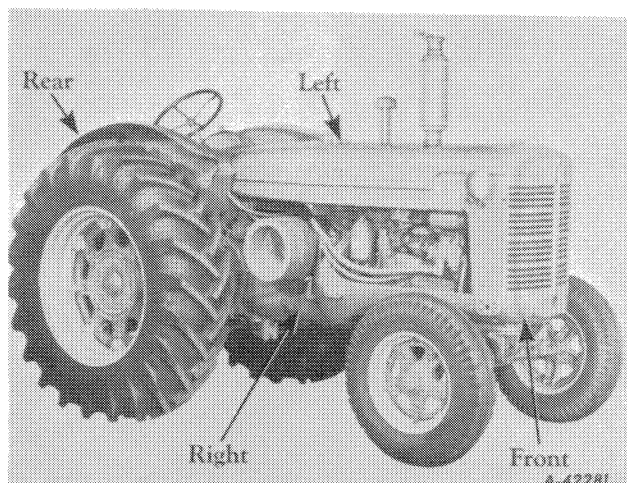
Description	Page No.
<b>Introduction</b>	
Delivery report (to be filled in when tractor is delivered).....	Inside the front cover
General.....	2
Serial numbers, engine and tractor.....	2
<b>Description</b>	
Before starting your new tractor.....	8, 9
Diesel fuel oil specifications.....	11
Instruments and controls.....	4 to 7
Preparing your tractor for each day's work.....	9, 10
Views of the tractors.....	3
<b>Operating Your Tractor</b>	
Driving the tractor.....	14 to 23
Operating the diesel engine.....	12, 13
<b>Lubrication</b>	
General engine lubrication.....	24
Greasing the front wheels.....	26
Lubrication guide.....	30 to 33
Lubrication table.....	29
Lubricating oil and grease specifications.....	27, 28
Oil filter.....	25
<b>Maintenance</b>	
Air cleaning system.....	48
Battery ignition unit.....	50 to 52
Brakes.....	66
Carburetor.....	35, 36
Clutch.....	67, 68
Cold weather precautions.....	43, 44
Cooling system.....	45 to 47
Diesel fuel system.....	37 to 43
Gasoline strainer.....	35
Hydra-Touch system.....	73, 74
Hydraulic power steering.....	74, 75
Magneto (tractors so equipped).....	54 to 56
Minor engine service operations.....	65
Periodic inspections.....	34, 35
Pneumatic tires.....	70 to 72
Spark plugs and cables.....	49
Starting and lighting equipment (tractors with battery ignition).....	57 to 62
Starting and lighting equipment (tractors with magneto).....	61
Starting diesel engines that have been in storage.....	83
Storage battery.....	63, 64
Storing and housing your tractor.....	82
Tachometer drive unit.....	53
Trouble shooting.....	76 to 81
Valve clearance adjustment.....	65
Wheels.....	69
<b>Special Equipment</b> .....	84 to 92
<b>Specifications</b> .....	93, 94

# INTRODUCTION

Assembled in this book are operating and maintenance instructions for the International 600 Diesel Tractor. This material has been prepared in detail in the hope that it will help you to better understand the correct care and efficient operation of your tractor.

If you should need information not given in this manual, or require the services of a trained mechanic, get in touch with the International Harvester dealer in your locality. Dealers are kept informed on the latest methods of servicing tractors. They carry stocks of IH parts, and are backed in every case by the full facilities of a nearby International Harvester District Office.

Throughout this manual the use of the terms LEFT, RIGHT, FRONT, and REAR must be understood to avoid confusion when following instructions. LEFT and RIGHT indicate the left and right sides of the tractor when facing forward in the driver's seat. Reference to FRONT indicates the radiator end of the tractor; to REAR, the drawbar end. See *Illust. 2*.

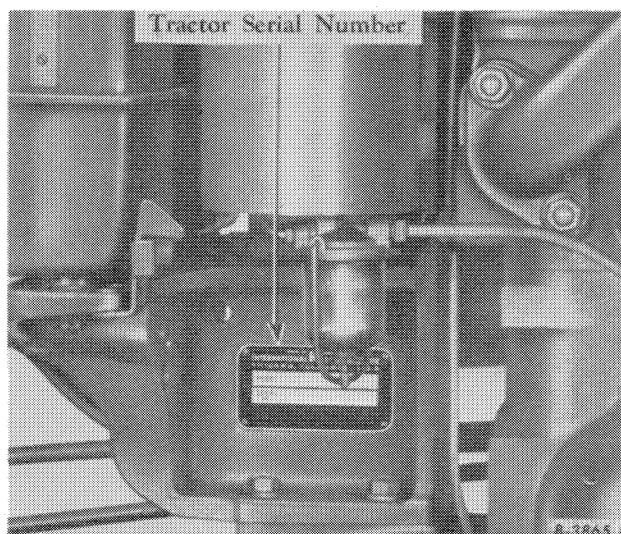


**Illust. 2**  
Terms of location.

The illustrations in this manual are numbered to correspond with the pages on which they appear; for example, *Illusts. 2, 2A, and 2B* are on page 2.

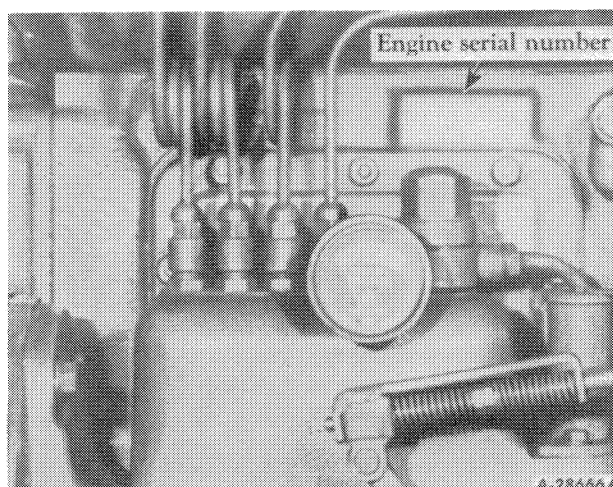
A variety of special equipment is available for use with these tractors. The instructions for operating and maintaining the special equipment have been included in the instructions for operating and maintaining the tractor. Disregard the instructions for special equipment not on your tractor.

When in need of parts, always specify the tractor and engine serial numbers. The tractor serial number is stamped on a name plate attached on the right side of the fuel tank support. See *Illust. 2A*.



**Illust. 2A**  
Location of tractor serial number.

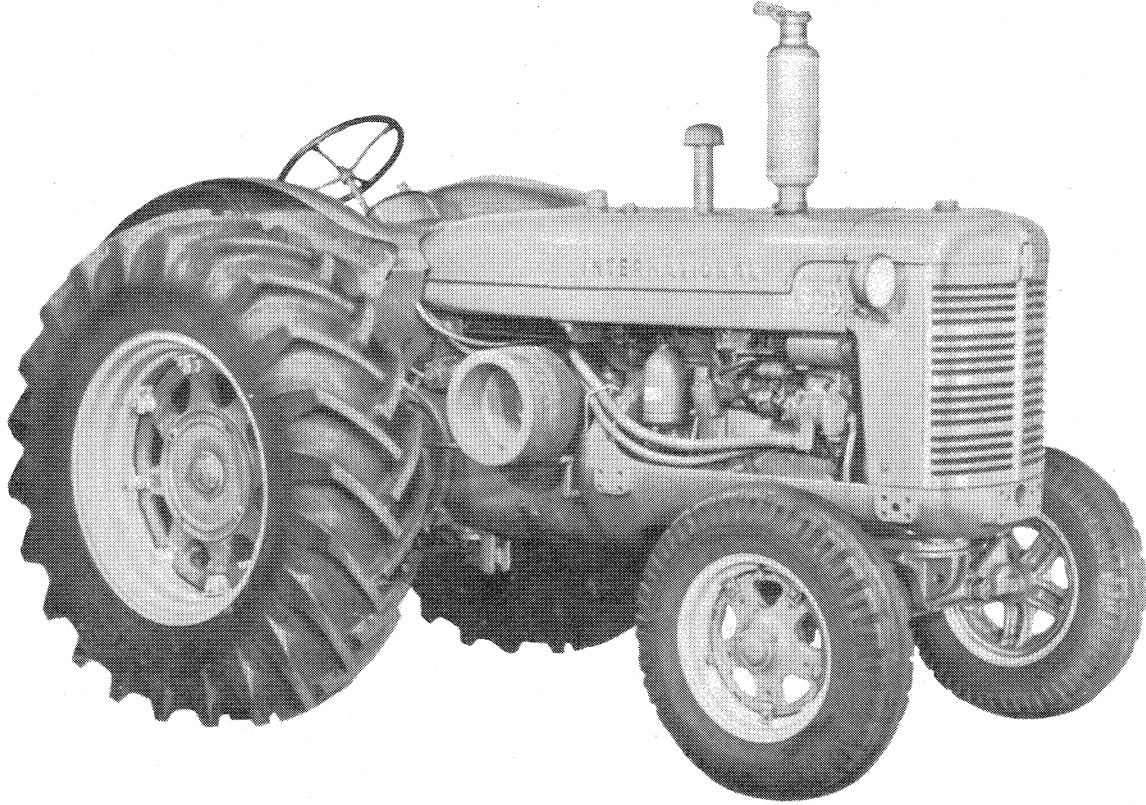
The engine serial number is stamped on the left side of the engine crankcase above the fuel injection pump. See *Illust. 2B*. This serial number is preceded by the prefix D-350, which indicates that it is a diesel engine with a 350-cubic-inch displacement.



**Illust. 2B**  
Location of engine serial number.

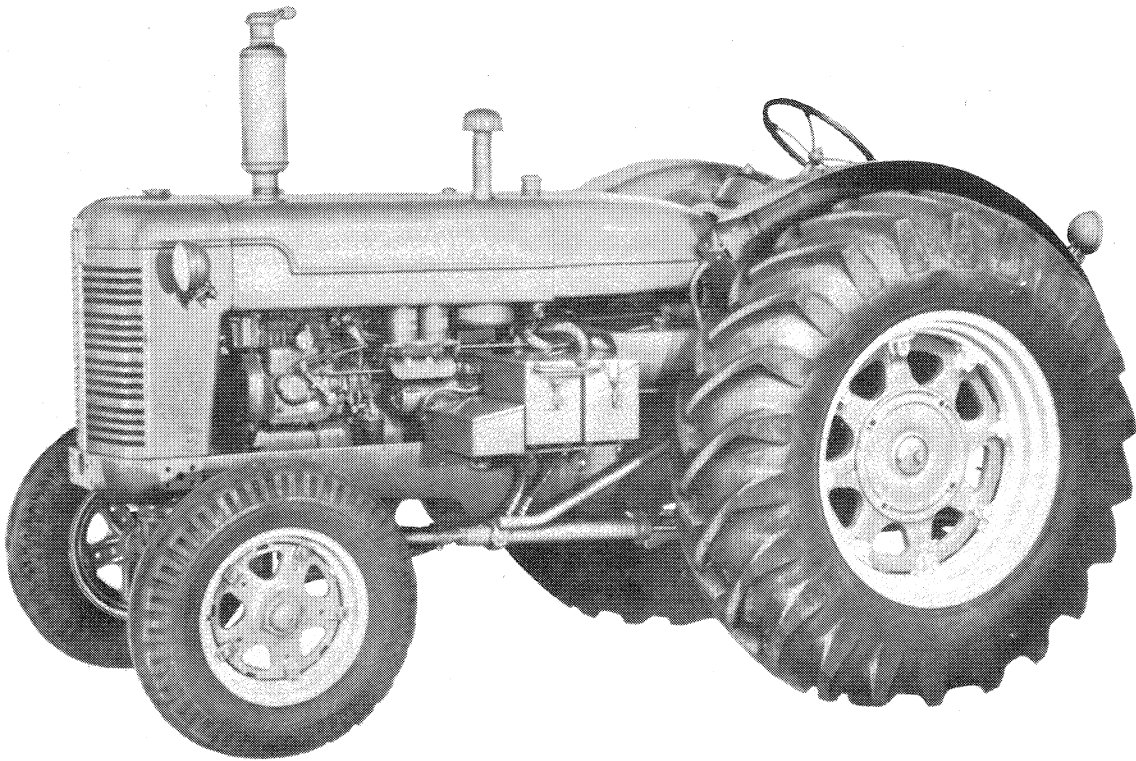
For ready reference, we suggest that you write these serial numbers in the spaces provided on the Delivery Report.

# DESCRIPTION



A-42282

Illust. 3  
Right front view.



A-42283

Illust. 3A  
Left side view.



**Buy Now**



Our support email:

[ebooklibonline@outlook.com](mailto:ebooklibonline@outlook.com)