

Farmall 350 Diesel Tractor

Operators Manual

1004493R2

Reprinted

CASE III



This symbol means ATTENTION! BECOME ALERT! YOUR SAFETY IS INVOLVED. The message that follows the symbol contains important information about your safety. Carefully read the message. Make sure you fully understand the causes of possible injury or death.

SB001

IF THIS MACHINE IS USED BY AN EMPLOYEE, IS LOANED, OR IS RENTED, MAKE SURE THAT THE OPERATOR UNDERSTANDS THE TWO INSTRUCTIONS BELOW.

BEFORE THE OPERATOR STARTS THE ENGINE:

1. GIVE INSTRUCTIONS TO THE OPERATOR ON SAFE AND CORRECT USE OF THE MACHINE.
2. MAKE SURE THE OPERATOR READS AND UNDERSTANDS THE OPERATOR'S MANUAL FOR THIS MACHINE.



IMPROPER OPERATION OF THIS MACHINE CAN CAUSE INJURY OR DEATH.

BEFORE STARTING THE ENGINE, DO THE FOLLOWING:

1. READ THE OPERATOR'S MANUAL.
2. READ ALL SAFETY DECALS ON THE MACHINE.
3. CLEAR THE AREA OF OTHER PERSONS.

LEARN AND PRACTICE SAFE USE OF MACHINE CONTROLS IN A SAFE, CLEAR AREA BEFORE YOU OPERATE THIS MACHINE ON A JOB SITE.

It is your responsibility to observe pertinent laws and regulations and to follow manufacturer's instructions on machine operation and maintenance.

See your Authorized Case dealer for additional operator's manuals, parts catalogs, and service manuals.

TO THE OWNER

The purpose of this manual is to assist you in realizing the benefits you anticipated when you purchased this International Harvester product. Literally thousands of people have contributed to the design and production of this product and its delivery to you. They have an interest in its successful performance and have provided this manual to give you the benefit of the experience they have gained through years of field testing and normal usage of this and similar products.

The way you operate and the care you give this product will have much to do with its successful performance. This manual has been carefully prepared and the information arranged and illustrated to make it as easy as possible for you to find the information you wish. It will pay you to read the entire manual carefully before operating and keep it handy for future reference. Your International Harvester Dealer will be glad to answer any further questions you may have on the operation or care of this product.

It is the policy of International Harvester Company to improve its products whenever it is possible and practical to do so. We reserve the right to make changes or add improvements at any time without incurring any obligation to make such changes on products sold previously.

All illustrations and descriptive matter in this publication apply to International Harvester products sold under the International, McCormick, McCormick-International, McCormick-Deering, or McCormick-Deering International trade name.

CONTENTS

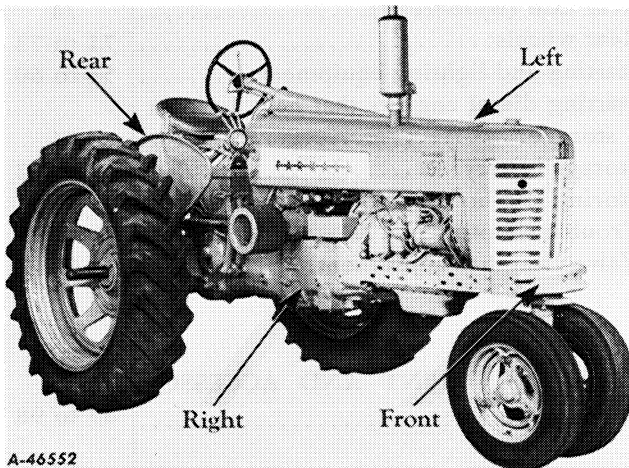
Description	Page No.	Description	Page No.
INTRODUCTION		MAINTENANCE	
General.....	2	Adjustable wide-tread front axle.....	69, 70
Serial numbers, engine and tractor.....	2	Air cleaning system.....	51, 52
DESCRIPTION		Brakes.....	63, 64
Before starting your new tractor.....	7, 8	Clutches.....	65, 66
Diesel fuel oil specifications.....	11	Cold weather precautions.....	47, 48
Instruments and controls.....	4 to 7	Cooling system.....	48 to 51
Preparing your tractor for each day's work.....	9, 10	Diesel fuel system.....	42 to 46
Views of the tractor.....	3	Front wheels.....	68 to 70
OPERATING YOUR TRACTOR		Hydra-Touch system.....	77, 78
Comparative ground speeds with various tires.....	18	Independent power take-off.....	67
Driving the tractor.....	15 to 18	Manifold air restriction valve.....	41
Hitching the tractor to the implement....	20, 21	Minor engine service operations.....	63
Operating the belt pulley.....	19, 20	Periodic inspections.....	40, 41
Operating the diesel engine.....	12 to 14	Pneumatic tires.....	74 to 77
Operating the Hydra-Touch system.....	24 to 27	Rear axle (wide-tread).....	74
Operating the pneumatic tire pump.....	20	Rear wheels.....	71 to 73
Operating the power take-off.....	22, 23	Starting and lighting equipment.....	53 to 60
Operating the torque amplifier.....	19	Starting diesel engines that have been in storage.....	84
LUBRICATION		Storage battery.....	60 to 62
General engine lubrication.....	28	Storing and housing your tractor.....	84
Greasing the front wheels.....	30	Trouble shooting.....	79 to 83
Lubrication guide.....	33 to 39	Valve clearance adjustment.....	62
Lubricating oil and grease specifications..	30 to 32	EXTRA EQUIPMENT AND ACCESSORIES.....	
Lubricating oil filter.....	29	85 to 98	
LUBRICATION		SPECIFICATIONS.....	
		99, 100	
		COMPREHENSIVE INDEX.....	
		101 to 104	

INTRODUCTION

Assembled in this book are operating and maintenance instructions for the Farmall 350 Diesel and 350 Diesel Hi-Clear Tractors. This material has been prepared in detail in the hope that it will help you to better understand the correct care and efficient operation of your tractor.

If you should need information not given in this manual, or require the services of a trained mechanic, get in touch with the International Harvester dealer in your locality. Dealers are kept informed on the latest methods of servicing tractors. They carry stocks of IH parts, and are backed in every case by the full facilities of a nearby International Harvester District Office.

Throughout this manual the use of the terms LEFT, RIGHT, FRONT and REAR must be understood to avoid confusion when following instructions. LEFT and RIGHT indicate the left and right sides of the tractor when facing forward in the driver's seat. Reference to FRONT indicates the radiator end of the tractor; to REAR, the drawbar end. See *Illust. 2*.



Illust. 2
Terms of location.

The illustrations in this manual are numbered to correspond with the pages on which they appear; for example, *Illusts. 2, 2A and 2B are on page 2*.

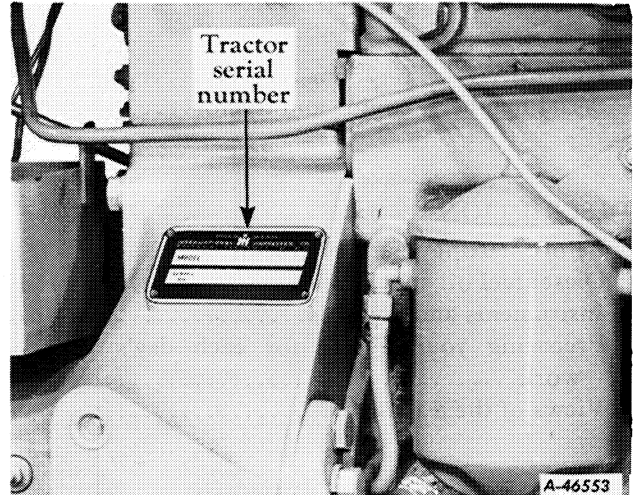
In order to provide a tractor equipped as nearly as possible to suit each customer's needs, a variety of extra equipment and accessories is available.

Many of these items are illustrated and described in the Extra Equipment and Accessories section of this manual.

Where operating and maintaining instruction on these items is required, it is included in the instructions for operating and maintaining the tractor.

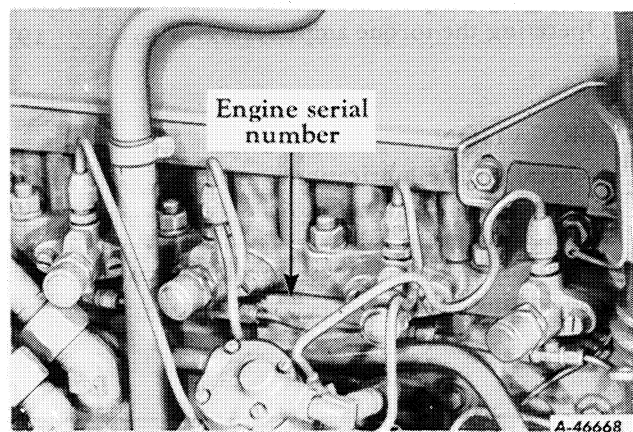
Disregard the instructions for equipment not on your tractor.

When in need of parts, always specify the tractor and engine serial numbers. The tractor serial number is stamped on a name plate attached to the right side of the clutch housing. See *Illust. 2A*.



Illust. 2A
Location of tractor serial number.

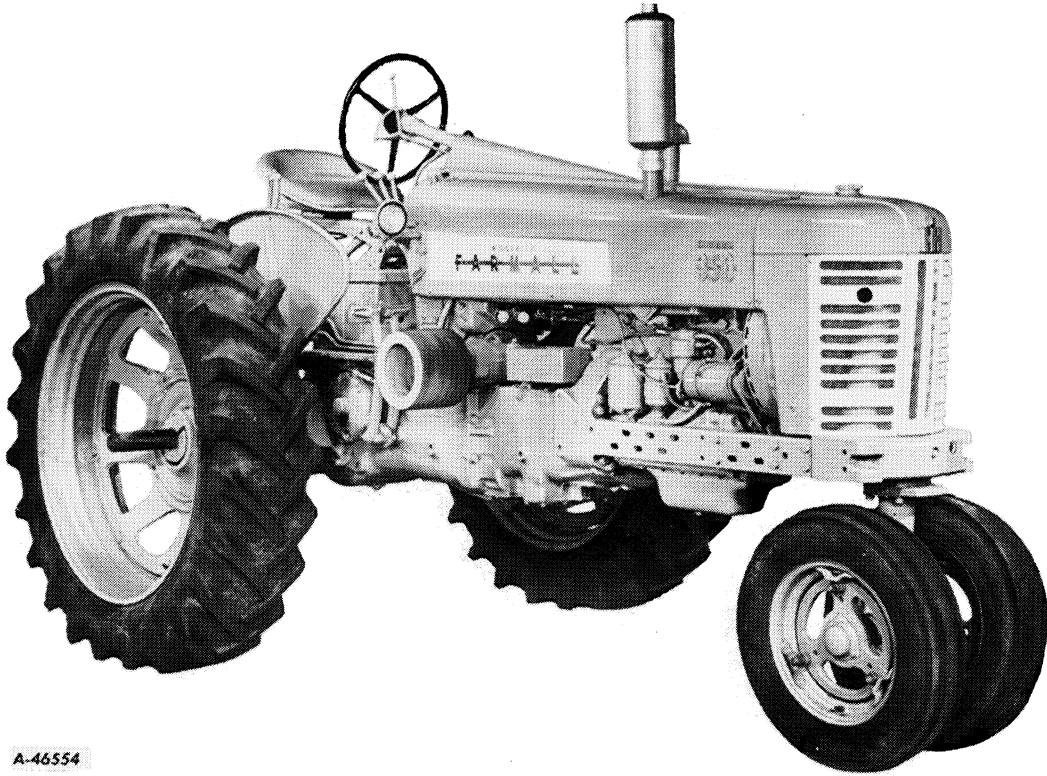
The engine serial number is stamped on the left side of the engine crankcase behind the injection pump. See *Illust. 2B*. This serial number is preceded by the prefix D-193, which indicates that it is a diesel engine with a 193-cubic-inch piston displacement.



Illust. 2B
Location of engine serial number.

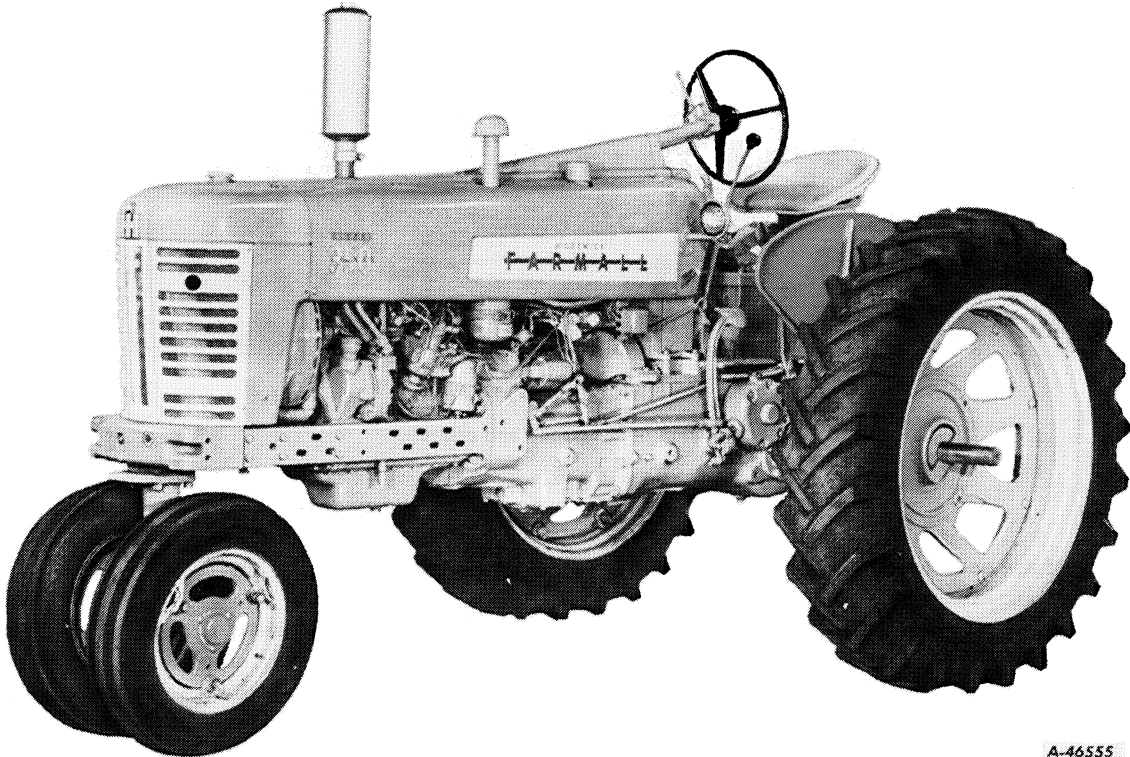
For ready reference, we suggest that you write these serial numbers in the spaces provided on the Delivery Report.

DESCRIPTION



A-46554

Illust. 3
Right front view of the Farmall 350 Diesel.

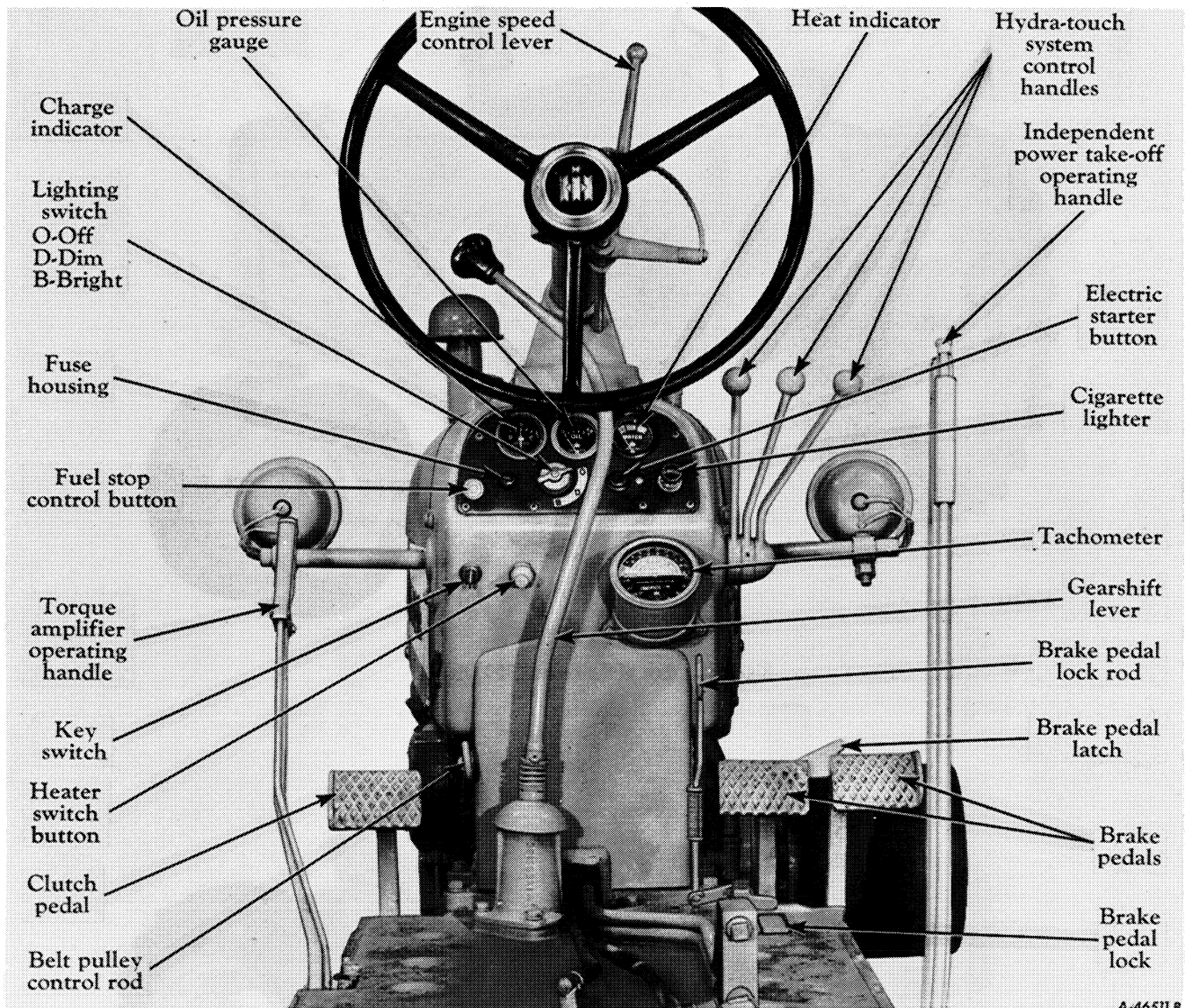


A-46555

Illust. 3A
Left front view of the Farmall 350 Diesel.

DESCRIPTION

Instruments and Controls



Illust. 4

Location of instruments and controls.

Brake Pedals

These pedals are used to stop the tractor, to hold the tractor in a stationary position, or to assist in making sharp turns as outlined below:

To stop the tractor, depress both pedals at the same time. Before driving the tractor in high gear, always latch the pedals together.

To hold the tractor in a stationary position,

latch the pedals together, depress and lock them in this depressed position by using the brake pedal lock.

To assist in making a sharp turn, operate the pedals individually, depressing the pedal on the side toward which the turn is to be made.

The brake pedal latch (*Illusts. 4 and 18*) is used to latch both brake pedals together, causing the brakes to operate simultaneously.

DESCRIPTION



Caution! Always latch the brake pedals together when driving the tractor in high gear (fifth speed). To latch the pedals together, engage the latch (located in back of the left pedal, *Illust. 18*) in the slot in back of the right pedal. When the brake pedals are not latched together, the latch should rest in the slot in back of the left brake pedal.

The brake pedal lock (*Illust. 18*) is used to lock the brake pedals in the depressed position; this prevents the tractor from moving.

Clutch Pedal

This pedal, when depressed all the way, disengages the engine from the transmission.

Fuel Stop Control Button

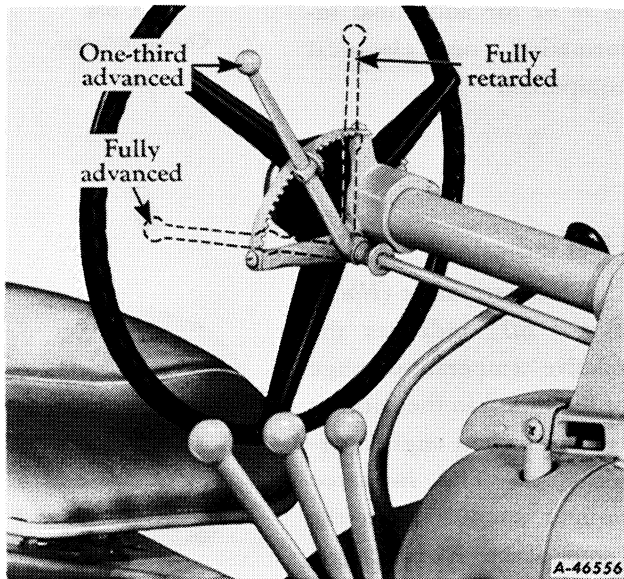
The fuel stop control button is used when starting or stopping the engine. *See Illust. 4.*

Push the button in when starting the engine. Pull it out when stopping the engine.

Radiator Shutter Control Crank

The control crank opens and closes the radiator shutter, controlling the engine temperature. Turn the crank counterclockwise to close the shutter and clockwise to open the shutter. *Refer to pages 13, 14 and 47.*

Engine Speed Control Lever



Illust. 5

Various positions of the engine speed control lever.

This lever controls the speed of the engine and, when set in a given position, will maintain a uniform engine speed even though the engine load may vary.

The rated or maximum full load governed speed is 1,750 r.p.m.; maximum idle speed is approximately 1,925 r.p.m.; minimum idle speed (hand throttle) is approximately 600 r.p.m. with the engine speed control lever fully retarded. *See Illust. 5.* Never operate the engine at more than the regular governed speed. Excessive speeds are harmful.

Lighting Switch

The switch has three positions: "O"—off position, "D"—dim lights, and "B"—bright lights.

Cigarette Lighter

Push the lighter in to make electrical contact. When it pops back it is ready for use.

Key Switch

A key-type switch is located near the left side of the instrument panel and reservoir shroud. Turn the key clockwise to the horizontal position before attempting to start the engine. The key cannot be removed when in this position.

Electric Starter Button

Pushing the electric starter button in completes the electrical circuit between the battery and the cranking motor solenoid and causes the cranking motor pinion to engage the flywheel ring gear, thereby cranking the engine. *Refer to page 13* for starting the engine.

Power Take-Off Shifter Rod (Transmission-Driven)

The shifter rod is used to engage or disengage the power take-off. *See page 23* for operating instructions.

Buy Now



Our support email:

ebooklibonline@outlook.com