

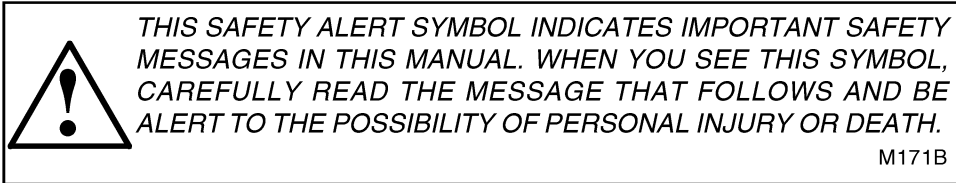
# 350 UTILITY TRACTOR

## Operators Manual

1014022R2

Reprinted




**CASE III**



If Safety Decals on this machine use the words **Danger, Warning or Caution**, which are defined as follows:

- **DANGER:** Indicates an immediate hazardous situation which if not avoided, will result in death or serious injury. The color associated with Danger is RED.
- **WARNING:** Indicates a potentially hazardous situation which if not avoided, will result in serious injury. The color associated with Warning is ORANGE.
- **CAUTION:** Indicates a potentially hazardous situation which if not avoided, may result in minor or moderate injury. It may also be used to alert against unsafe practices. The color associated with Caution is YELLOW.

If Safety Decals on this machine are ISO two panel Pictorial, decals are defined as follows:

- The first panel indicates the nature of the hazard.
- The second panel indicates the appropriate avoidance of the hazard.
- Background color is YELLOW.
- Prohibition symbols such as   and  if used, are RED.



# WARNING

IMPROPER OPERATION OF THIS MACHINE CAN CAUSE INJURY OR DEATH. BEFORE USING THIS MACHINE, MAKE CERTAIN THAT EVERY OPERATOR:

- Is instructed in safe and proper use of the machine.
- Reads and understands the Manual(s) pertaining to the machine.
- Reads and understands ALL Safety Decals on the machine.
- Clears the area of other persons.
- Learns and practices safe use of machine controls in a safe, clear area before operating this machine on a job site.

It is your responsibility to observe pertinent laws and regulations and follow Case Corporation instructions on machine operation and maintenance.

BE SURE THIS OPERATORS MANUAL IS KEPT WITH THIS  
MACHINE AT ALL TIMES, REGARDLESS OF OWNERSHIP.

## TO THE OWNER

The purpose of this manual is to assist you in realizing the benefits you anticipated when you purchased this International Harvester product. Literally thousands of people have contributed to the design and production of this product and its delivery to you. They have an interest in its successful performance and have provided this manual to give you the benefit of the experience they have gained through years of field testing and normal usage of this and similar products.

The way you operate and the care you give this product will have much to do with its successful performance. This manual has been carefully prepared and the information arranged and illustrated to make it as easy as possible for you to find the information you wish. It will pay you to read the entire manual carefully before operating and keep it handy for future reference. Your International Harvester Dealer will be glad to answer any further questions you may have on the operation or care of this product.

---

It is the policy of International Harvester Company to improve its products whenever it is possible and practical to do so. We reserve the right to make changes or add improvements at any time without incurring any obligation to make such changes on products sold previously.

---

All illustrations and descriptive matter in this publication apply to International Harvester products sold under the International, McCormick, McCormick-International, McCormick-Deering, or McCormick-Deering International trade name.

# CONTENTS

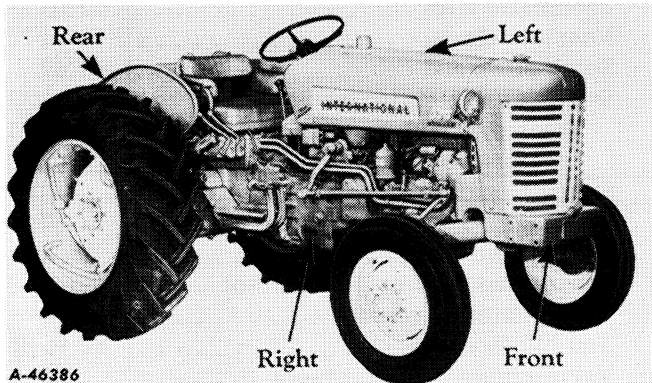
Description	Page No.	Description	Page No.	
INTRODUCTION		MAINTENANCE		
Delivery report (to be filled in when tractor is delivered) . . . . .	<div style="display: flex; align-items: center;"> <span style="font-size: 2em; margin-right: 5px;">{</span> <div style="display: flex; flex-direction: column; gap: 5px;"> <span>Inside</span> <span>Front</span> <span>Cover</span> </div> </div>	Air cleaning system . . . . .	46	
General . . . . .		2	Battery ignition unit . . . . .	48 to 51
Serial numbers, engine and tractor . . . . .		2	Brakes . . . . .	67, 68
DESCRIPTION		Carburetor . . . . .	39 to 41	
Before starting your new tractor . . . . .	7, 8	Clutches . . . . .	68, 69	
Instruments and controls . . . . .	4 to 7	Cold weather precautions . . . . .	41, 42	
Preparing your tractor for each day's work . . . . .	9 to 11	Cooling system . . . . .	42 to 45	
Views of the tractor . . . . .	3	Front wheels . . . . .	71 to 73	
OPERATING YOUR TRACTOR		Fuel strainer . . . . .	39	
Driving the tractor . . . . .	16 to 19	Hydra-Touch system . . . . .	80, 81	
Ground speeds . . . . .	19, 20	Independent power take-off . . . . .	70	
Hitching the tractor to the implement . . . . .	21	Magneto . . . . .	52 to 54	
Operating a distillate engine on distillate . . . . .	14 to 16	Minor engine service operations . . . . .	67	
Operating a distillate engine on gasoline . . . . .	16	Periodic inspections . . . . .	38, 39	
Operating a gasoline engine . . . . .	13 to 15	Pneumatic tires . . . . .	77 to 79	
Operating a kerosene engine . . . . .	16	Rear wheels . . . . .	74 to 76	
Operating the belt pulley . . . . .	24, 25	Spark plugs and cables . . . . .	47	
Operating the Hydra-Touch system . . . . .	26, 27	Starting and lighting equipment		
Operating the pneumatic tire pump . . . . .	25	Tractors with battery ignition . . . . .	55 to 61	
Operating the power take-off . . . . .	22 to 24	Tractors with magneto . . . . .	62	
Operating the torque amplifier . . . . .	20	Starting engines that have been in storage . . . . .	87	
LUBRICATION		Storage battery . . . . .	63, 64	
General engine lubrication . . . . .	28	Storing and housing your tractor . . . . .	86, 87	
Greasing the front wheels . . . . .	30	Tachometer drive unit . . . . .	65	
Lubrication guide . . . . .	32 to 37	Trouble shooting . . . . .	82 to 86	
Lubricating oil and grease specifications . . . . .	30, 31	Valve clearance adjustment . . . . .	66	
Oil filter . . . . .	29	EXTRA EQUIPMENT AND ACCESSORIES . . . . .	88 to 100	
		SPECIFICATIONS . . . . .	101, 102	
		COMPREHENSIVE INDEX . . . . .	103 to 106	

# INTRODUCTION

Assembled in this book are operating and maintenance instructions for the International 350 Utility Tractor. This material has been prepared in detail in the hope that it will help you to better understand the correct care and efficient operation of your tractor.

If you should need information not given in this manual, or require the services of a trained mechanic, get in touch with the International Harvester dealer in your locality. Dealers are kept informed on the latest methods of servicing tractors. They carry stocks of IH parts, and are backed in every case by the full facilities of a nearby International Harvester District Office.

Throughout this manual the use of the terms LEFT, RIGHT, FRONT, and REAR must be understood to avoid confusion when following instructions. LEFT and RIGHT indicate the left and right sides of the tractor when facing forward in the driver's seat. Reference to FRONT indicates the radiator end of the tractor; to REAR, the drawbar end.



Illust. 2

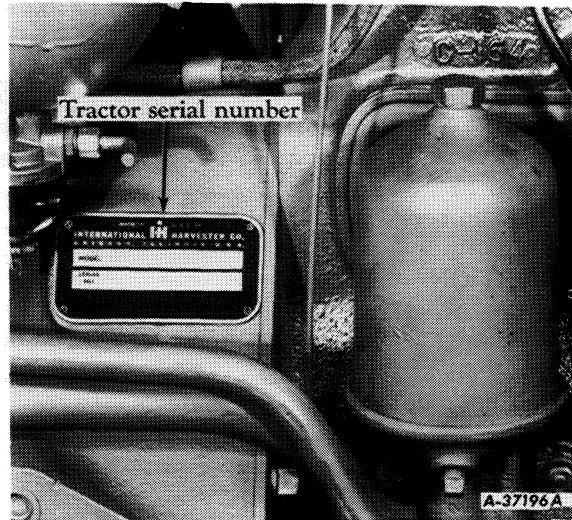
The illustrations in this manual are numbered to correspond with the pages on which they appear; for example, *Illusts. 2, 2A and 2B are on page 2.*

In order to provide a tractor equipped as nearly as possible to suit each customer's needs, a variety of extra equipment and accessories is available.

Many of these items are illustrated and described in the Extra Equipment and Accessories section of this manual.

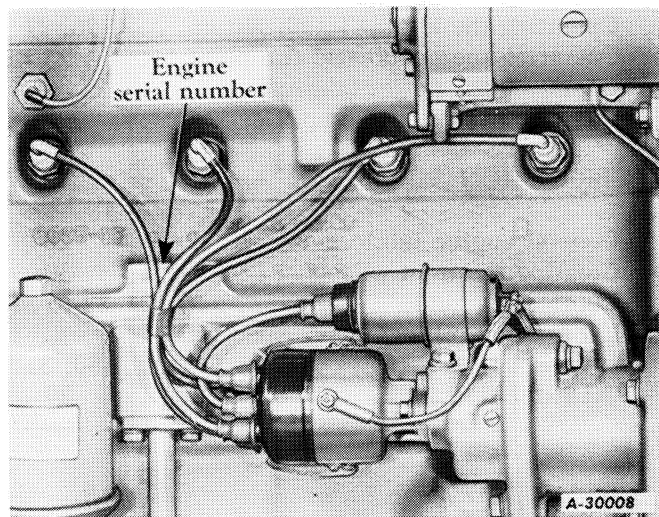
Where operating and maintaining instruction on these items is required, it is included in the instructions for operating and maintaining the tractor. Disregard the instructions for equipment not on your tractor.

When in need of parts, always specify the tractor and engine serial numbers including prefix and suffix letters. The tractor serial number is stamped on a name plate attached to the right side of the clutch housing. *See Illust. 2A.*



Illust. 2A  
Location of tractor serial number.

The engine serial number is stamped on the right side of the engine crankcase above the crankcase breather. *See Illust. 2B.* This serial number is preceded by the prefix C-175 which indicates that it is a carbureted engine with a 175-cubic-inch piston displacement.



Illust. 2B  
Location of engine serial number.

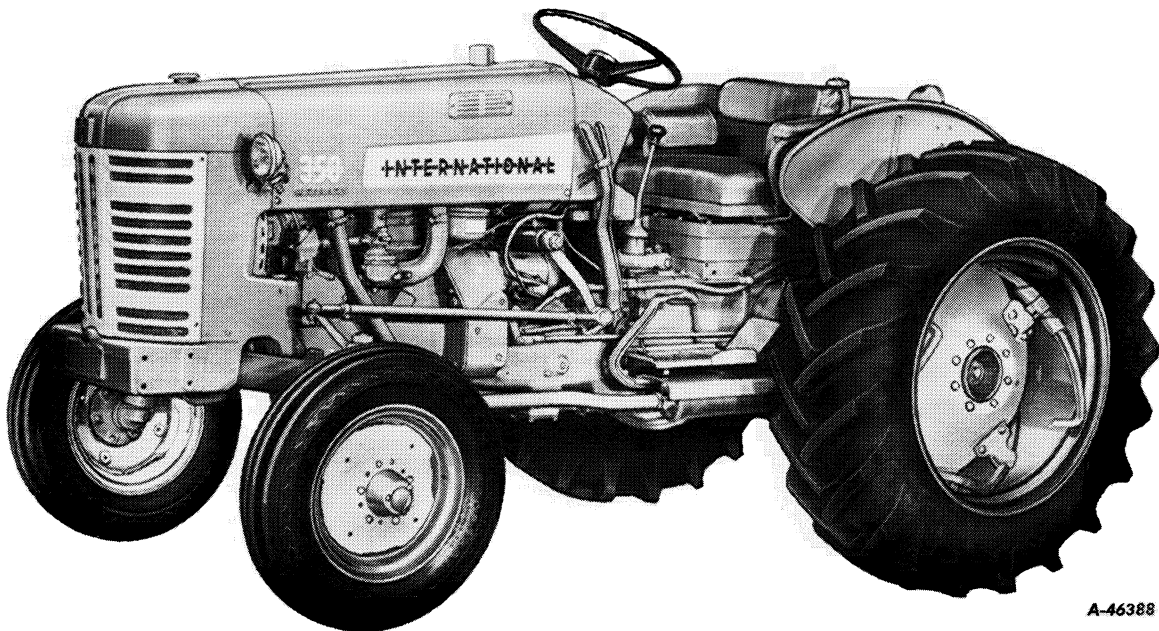
For ready reference, we suggest that you write these serial numbers in the spaces provided on the Delivery Report.

## DESCRIPTION



A-46387

Illust. 3  
Right front view.



A-46388

Illust. 3A  
Left front view.

## DESCRIPTION

### Instruments and Controls

#### Brake Pedals

These pedals are used to stop the tractor, to hold the tractor in a stationary position, or to assist in making sharp turns as outlined below:

To stop the tractor, depress both pedals at the same time. Before driving the tractor in high gear, always latch the pedals together.

To hold the tractor in a stationary position, latch the pedals together, depress and lock them in this depressed position by using the brake pedal lock.

To assist in making a sharp turn, operate the pedals individually, depressing the pedal on the side toward which the turn is to be made.

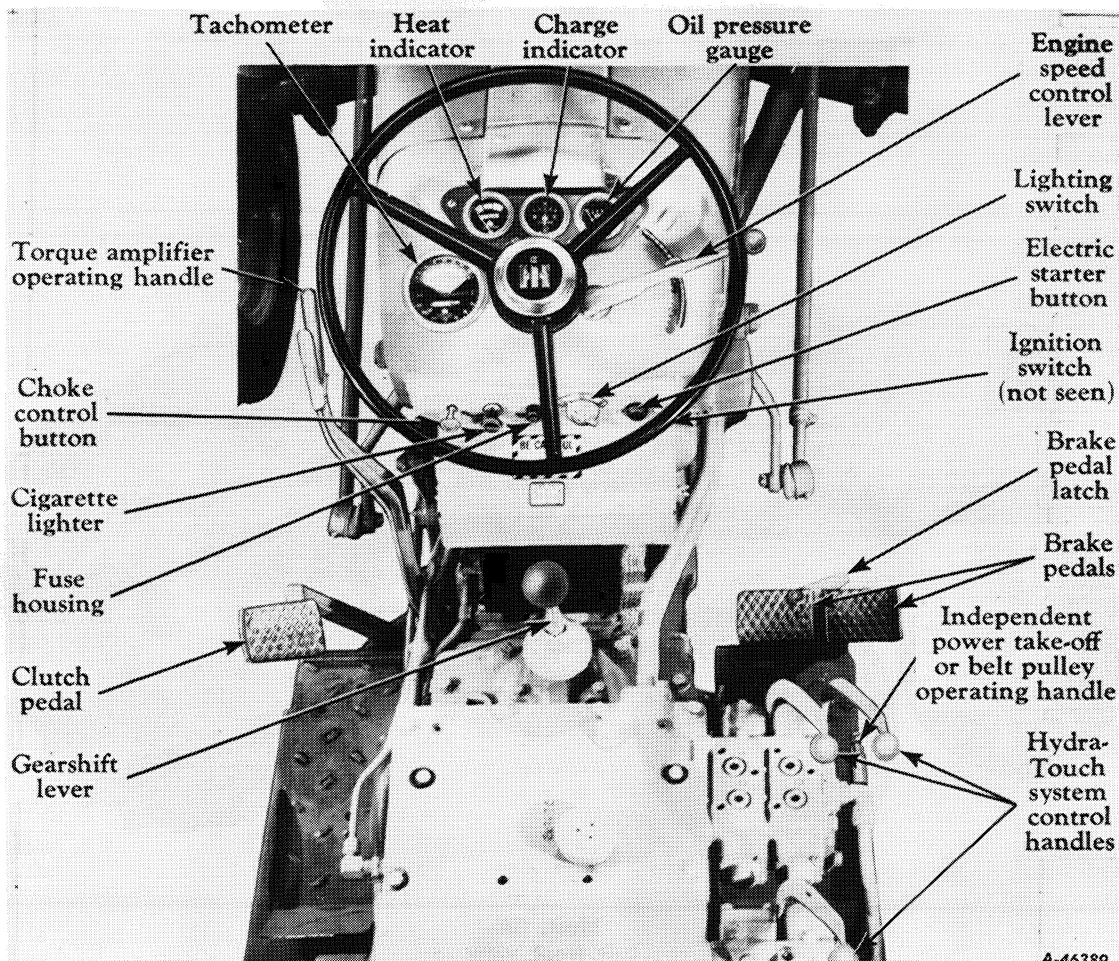
The brake pedal latch (*Illusts. 4 and 18*) is used to latch both brake pedals together, causing the brakes to operate simultaneously.

**Caution!** Always latch the brake pedals together when driving the tractor in high gear (fifth speed). To latch the pedals together, engage the latch (located in back of the left pedal) (*Illust. 18*) in the slot in back of the right pedal. When the brake pedals are not latched together, the latch should rest in the slot in back of the left brake pedal.

The brake pedal lock (*Illust. 18*) is used to lock the brake pedals in the depressed position; this prevents the tractor from moving.

#### Clutch Pedal

This pedal, when depressed all the way, disengages the engine from the transmission.



Illust. 4  
Location of instruments and controls.

## DESCRIPTION

### Choke Control Button

The choke control button makes it possible to regulate the carburetor choke from the driver's seat. Pulling out on the choke control button closes the carburetor choke for starting the engine; pushing it back in opens the choke.

### Radiator Shutter Control Crank

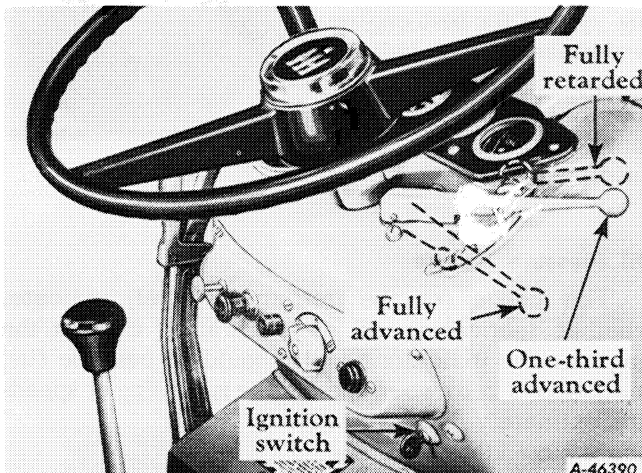
The control crank opens and closes the radiator shutter, controlling the engine temperature. Turn the crank counterclockwise to close the shutter and clockwise to open the shutter.

**Note:** Tractors with gasoline engines are not regularly equipped with this feature.

### Engine Speed Control Lever

This lever controls the speed of the engine and, when set in a given position, will maintain a uniform engine speed even though the engine load may vary.

The rated or maximum full load governed speed is 2,000 r.p.m.; maximum idle speed is approximately 2,200 r.p.m.; minimum idle speed (hand throttle) is 400 to 450 r.p.m. with the engine speed control lever fully retarded. *See Illust. 5.* Never operate the engine at more than the regular governed speed. Excessive speeds are harmful.



**Illust. 5**  
Various positions of the engine speed control lever.

The governor is set at the factory and should require no adjustment. Consult your International Harvester dealer if the governor does not function properly.

### Accelerator Pedal (Not Illustrated)

The accelerator pedal (if so equipped) is used when making frequent changes of tractor speeds. Pressing the pedal down with the heel increases the speed of the engine. The engine speed control lever should be retarded when the accelerator pedal is to be used.

### Lighting Switch

The switch has three positions: "O" – off position, "D" – dim lights, and "B" – bright lights.

### Cigarette Lighter

Push the lighter in to make electrical contact. When it pops back it is ready for use.

### Ignition Switch

A key-type lock ignition switch is located below the right side of the instrument panel. *See Illust. 4.* Turn the key clockwise to a horizontal position to turn on the ignition. The key cannot be removed when in this position.

**Caution!** When the engine is not operating or the engine has stalled and the operator leaves the tractor, the key must be turned to the "off" position to prevent battery discharge.

### Electric Starter Button

Pushing the button in completes the electrical circuit between the battery and the cranking motor solenoid and causes the cranking motor pinion to engage the flywheel ring gear, thereby cranking the engine. *Refer to page 11* for starting the engine.

### Transmission-Driven Power Take-Off or Belt Pulley Shifter Rod

The same shifter rod is used to engage or disengage the power take-off or belt pulley. *See page 22* for power take-off operating instructions *or page 24* for belt pulley operating instructions.

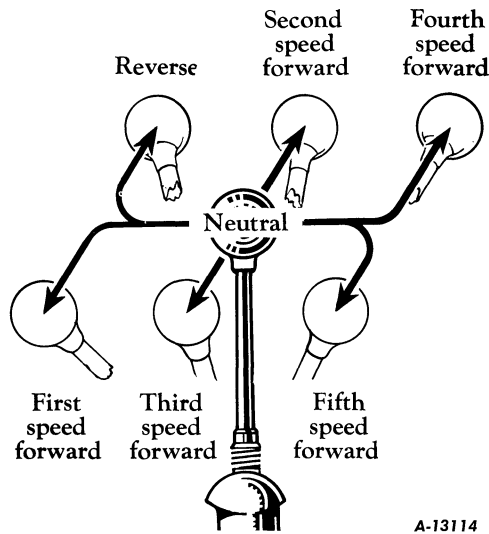
### Independent Power Take-Off or Belt Pulley Operating Handle

The same operating handle is used to engage or disengage the independent power take-off or belt pulley. *See page 23* for independent power take-off *or page 24* for belt pulley operating instructions.



## DESCRIPTION

### Gearshift Lever



Illustr. 6  
Gearshift positions.

This lever is used to select the various gear ratios in the transmission. There are five forward speeds and one reverse speed. See *Illustr. 6*.

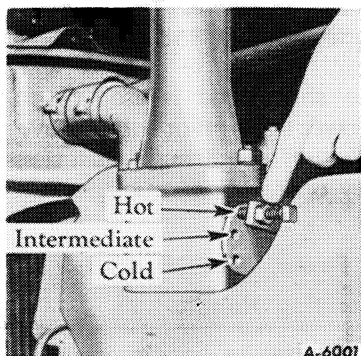
### Hydra-Touch System Control Handle

This handle (*Illustr. 4*) operates the Hydra-Touch Remote Control. It is used to raise, partially raise or lower implements. See *page 26* for operating instructions.

### Torque Amplifier Operating Handle

The torque amplifier operating handle is used to engage or disengage the torque amplifier. See *page 20* for operating instructions.

### Manifold Heat Control Lever

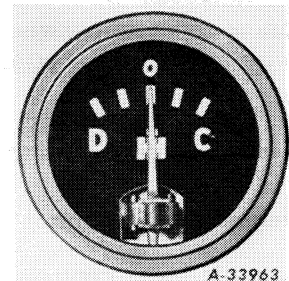


Illustr. 6A  
Heat control lever set in the hot position (distillate or kerosene engines only).

This control lever (*Illustr. 6A*) is used only on distillate or kerosene engines. For normal operation, set the lever in the top notch "H" (hot position). If the distillate or kerosene engine is to be operated on gasoline, set the control lever in the bottom notch "C" (cold position), and remove the manifold shield. For complete instructions see *pages 14 to 16*.

### Charge Indicator

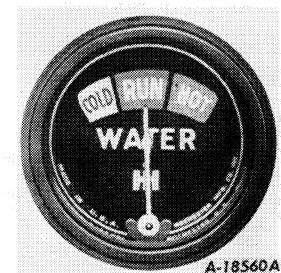
This instrument (*Illustrs. 4 and 6B*) indicates whether the generator is charging or the battery is discharging. If it shows discharge continuously, investigate the cause to avoid completely discharging the battery and possible damage to the generator. See *pages 55 to 64* for additional information on electrical equipment.



Illustr. 6B  
Charge indicator.

### Heat Indicator

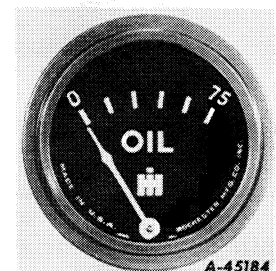
This instrument (*Illustrs. 4 and 6C*) indicates the relative temperature range of the liquid in the cooling system for best engine performance. The indicator pointer should be on the low side of the "RUN" range for engines using gasoline for fuel.



Illustr. 6C  
Heat indicator.

### Oil Pressure Gauge

This gauge (on the instrument panel) indicates whether lubricating oil is circulating through the engine. The indicator needle should be past the first mark above zero when the engine is running at speeds approximately 100 r.p.m. above slow idle speed. See *Illustr. 6D*. If it is not, stop the engine immediately and investigate the cause of oil pressure failure. If you are unable to find the cause, consult your International Harvester dealer before operating the engine.



Illustr. 6D  
Oil pressure gauge.

**Buy Now**



Our support email:

[ebooklibonline@outlook.com](mailto:ebooklibonline@outlook.com)