

460/560 Diesel Tractors

Operators Manual

1014367R2

Reprinted

CASE III



This symbol means ATTENTION! BECOME ALERT! YOUR SAFETY IS INVOLVED. The message that follows the symbol contains important information about your safety. Carefully read the message. Make sure you fully understand the causes of possible injury or death.

SB001

IF THIS MACHINE IS USED BY AN EMPLOYEE, IS LOANED, OR IS RENTED, MAKE SURE THAT THE OPERATOR UNDERSTANDS THE TWO INSTRUCTIONS BELOW.

BEFORE THE OPERATOR STARTS THE ENGINE:

1. GIVE INSTRUCTIONS TO THE OPERATOR ON SAFE AND CORRECT USE OF THE MACHINE.
2. MAKE SURE THE OPERATOR READS AND UNDERSTANDS THE OPERATOR'S MANUAL FOR THIS MACHINE.



IMPROPER OPERATION OF THIS MACHINE CAN CAUSE INJURY OR DEATH.

BEFORE STARTING THE ENGINE, DO THE FOLLOWING:

1. READ THE OPERATOR'S MANUAL.
2. READ ALL SAFETY DECALS ON THE MACHINE.
3. CLEAR THE AREA OF OTHER PERSONS.

LEARN AND PRACTICE SAFE USE OF MACHINE CONTROLS IN A SAFE, CLEAR AREA BEFORE YOU OPERATE THIS MACHINE ON A JOB SITE.

It is your responsibility to observe pertinent laws and regulations and to follow manufacturer's instructions on machine operation and maintenance.

See your Authorized Case dealer for additional operator's manuals, parts catalogs, and service manuals.

TO THE OWNER

We are glad to welcome you as an owner of a product of International Harvester Company. You have a fine product, designed and built to give you many years of efficient operation. The way you operate and the care you give this product will have much to do with its successful performance.

To help you operate your equipment with utmost efficiency we have provided this operator's manual. It has been carefully prepared to give you the benefit of many years of experience gained in field testing and normal usage of this and similar products.

We urge you to study this manual so you will understand your new equipment thoroughly before operating it. We also urge you to take care of your manual so you will have it available for reference when you need it.

If your manual is lost or destroyed, a new copy may be ordered from the International Harvester dealer at a nominal price. Your International Harvester dealer will also be glad to answer any questions you may have on the operation or care of this product.

It is the policy of International Harvester Company to improve its products whenever it is possible and practical to do so. We reserve the right to make changes or add improvements at any time without incurring any obligation to make such changes on products sold previously.

All illustrations and descriptive matter in this publication apply to International Harvester products sold under the International, McCormick, or McCormick-International trade name.

CONTENTS

Description	Page No.
DELIVERY REPORT	1
INTRODUCTION	3
DESCRIPTION	4
INSTRUMENTS AND CONTROLS	5 to 8
BEFORE STARTING YOUR NEW TRACTOR	9, 10
DIESEL FUEL OIL SPECIFICATIONS	10
PREPARING YOUR TRACTOR FOR EACH DAY'S WORK	11
OPERATING THE ENGINE	12 to 14
DRIVING THE TRACTOR	15 to 18
OPERATING THE TORQUE AMPLIFIER	18, 19
OPERATING THE HYDRA-TOUCH SYSTEM	20 to 24
HITCHING THE IMPLEMENT TO THE TRACTOR	25, 26
OPERATING THE INDEPENDENT POWER TAKE-OFF	26, 27
OPERATING THE BELT PULLEY	28, 29
FRONT WHEELS	30, 31
REAR WHEELS	32 to 37
WHEELS	30 to 37
WEIGHTS	38 to 40
PNEUMATIC TIRES	41 to 43
STARTING AND LIGHTING EQUIPMENT	44 to 47
COOLING SYSTEM	48
COLD WEATHER PRECAUTIONS	49, 50
GENERAL ENGINE LUBRICATION	50, 51
LUBRICATING OIL AND GREASE SPECIFICATIONS	51, 52
LUBRICATION TABLE	53
LUBRICATION GUIDE	54 to 58
SPECIFICATIONS	59 to 65
EXTRA EQUIPMENT AND ACCESSORIES	66

A Careful Operator

IS THE BEST INSURANCE

AGAINST AN ACCIDENT

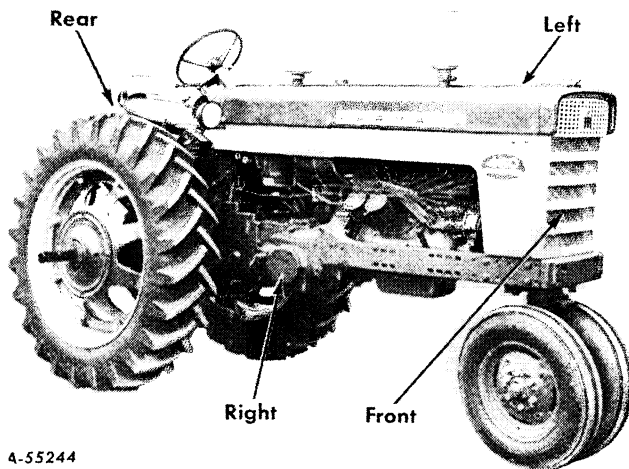
—National Safety Council.

INTRODUCTION

Assembled in this book are operating and lubrication instructions for the Farmall 460 Diesel, 460 Diesel Hi-Clear, 560 Diesel, 560 Diesel Hi-Clear, and International 560 Diesel Tractors. This material has been prepared in detail in the hope that it will help you to better understand the correct care and efficient operation of your tractor.

If you should need information not given in this manual, or in the tractor Preventive Maintenance Manual, or require the services of a trained mechanic, get in touch with the International Harvester Dealer in your locality. Dealers are kept informed on the latest methods of servicing tractors. They carry stocks of IH parts, and are backed in every case by the full facilities of a nearby International Harvester District Office.

Throughout this manual the use of the terms LEFT, RIGHT, FRONT, and REAR must be understood to avoid confusion when following instructions. LEFT and RIGHT indicate the left and right sides of the tractor when facing forward in the driver's seat. Reference to FRONT indicates the radiator end of the tractor; to REAR, the drawbar end. See **Illust. 3.**



4-55244

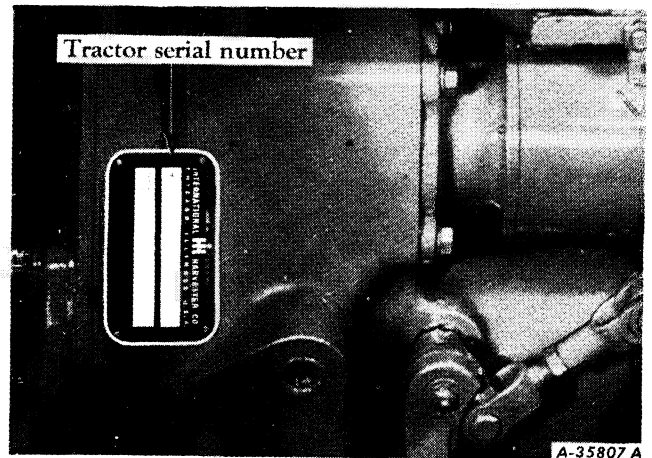
Illust. 3
Terms of location.

The illustrations in this manual are numbered to correspond with the pages on which they appear; for example, **Illusts. 3 and 3A** are on page 3.

In order to provide a tractor equipped as nearly as possible to suit each customer's needs, a variety of extra equipment and accessories is available. For a list of the extra equipment and accessories available, see page 66.

Where operating and maintaining instructions on these items is required, it is included in the instructions in the Operator's or Preventive Maintenance Manual. Disregard the instructions for equipment not on your tractor.

When in need of parts, always specify the tractor and engine serial numbers, including any prefix or suffix letters. On the Farmall 460 Diesel Tractor the tractor serial number is stamped on a plate attached to the right side of the clutch housing. On the Farmall and International 560 Diesel Tractors the tractor serial number is stamped on a plate attached to the left side of the clutch housing. See **Illust. 3A.**

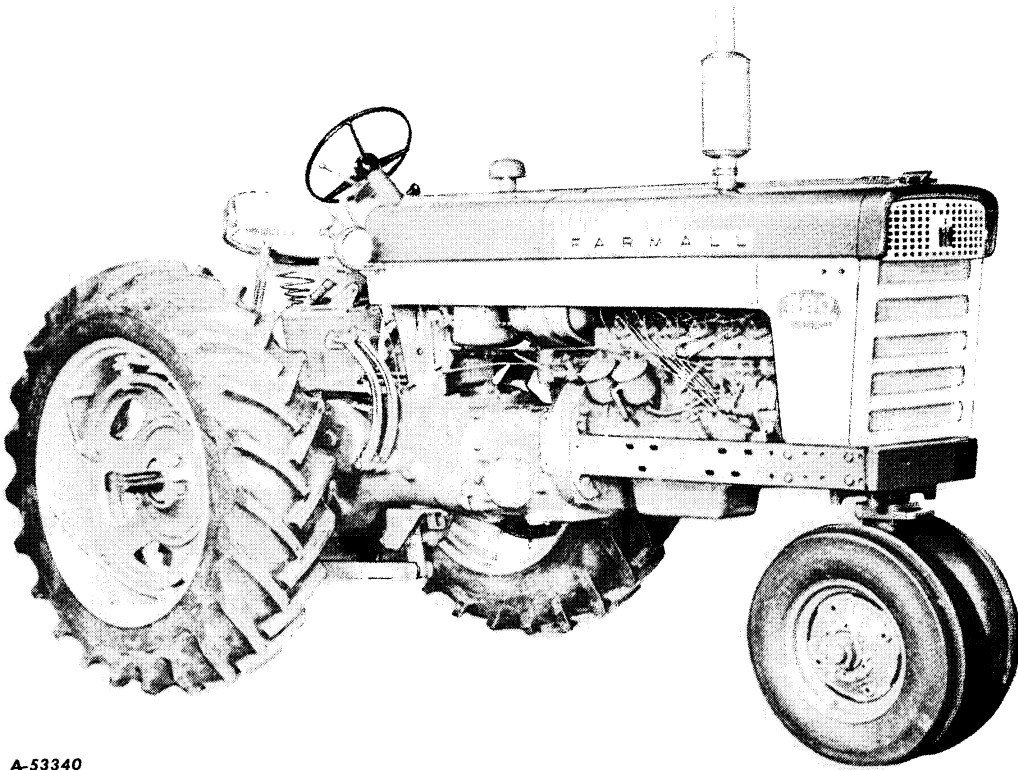


Illust. 3A
Location of the tractor serial number.

The engine serial number is stamped on the left side of the engine crankcase on a pad below the oil pump shaft support. This serial number is preceded by the prefix D-236 or D-282, which indicates that it is a Diesel engine with a 236 or 282 cubic-inch piston displacement.

For ready reference, we suggest that you write these serial numbers in the spaces provided on the Delivery Report.

DESCRIPTION



A-53340

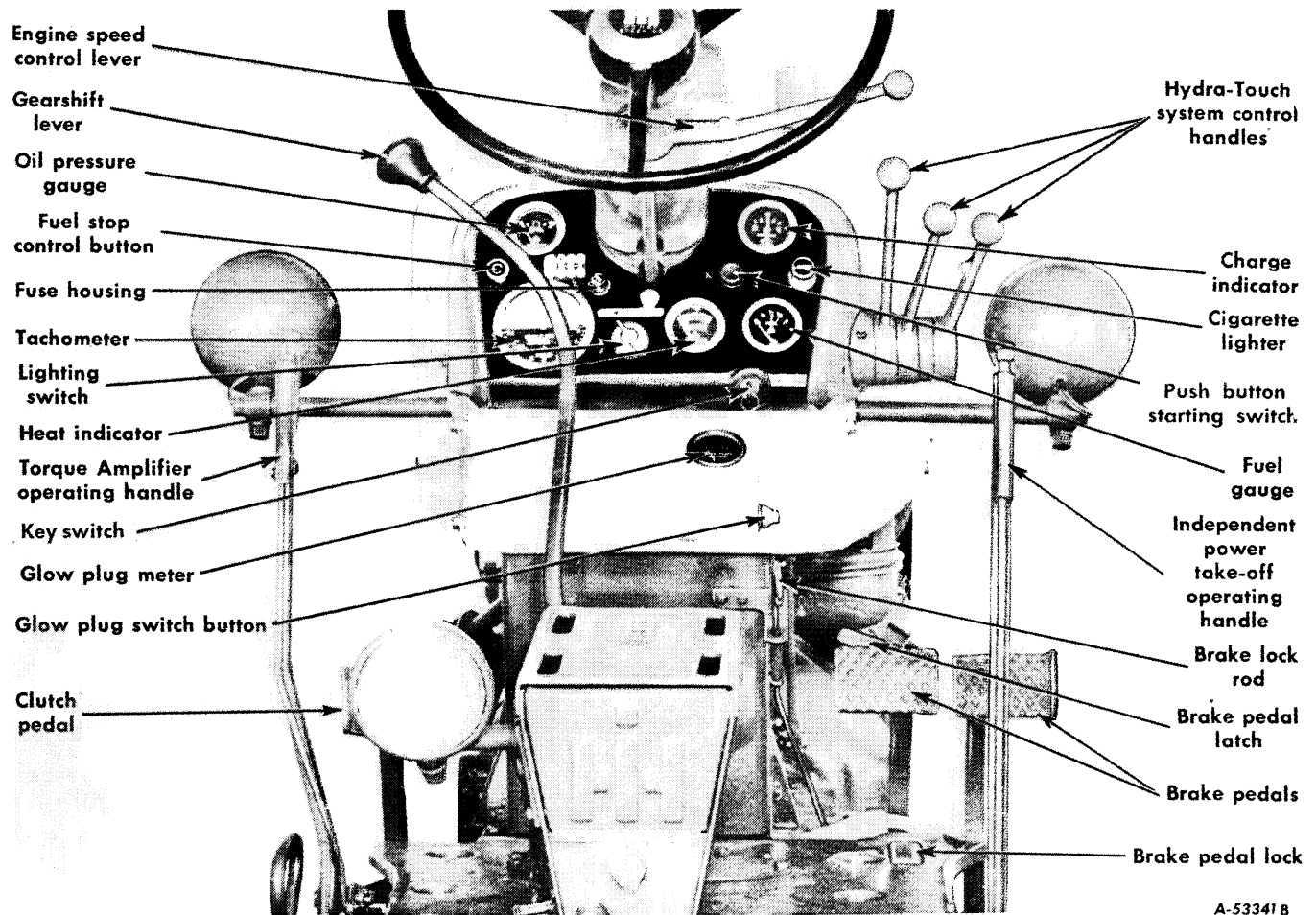
Illust. 4
Right front view of the Farmall 560 Diesel Tractor.



A-55245

Illust. 4A
Right front view of the Farmall 460 Diesel Tractor.

INSTRUMENTS AND CONTROLS



Illust. 5
Instruments and controls on the Farmall 460 and 560 Diesel Tractors.

BRAKE PEDALS

These pedals are used to stop the tractor, to hold the tractor in a stationary position, or to assist in making sharp turns as outlined below:

To stop the tractor, depress both pedals at the same time. Before driving the tractor in high gear, always latch the pedals together.

To hold the tractor in a stationary position, latch the pedals together, depress them, and lock them in this depressed position by using the brake pedal lock.

To assist in making a sharp turn, operate the pedals individually, depressing the pedal on the side toward which the turn is to be made.

The brake pedal latch (Illusts. 5 or 6) is used to latch both brake pedals together, causing the brakes to operate simultaneously.

Caution! Always latch the brake pedals together when driving the tractor in high gear (fifth speed). To latch the pedals

together, engage the latch (in back of the left pedal, Illust. 5 or 6) in the slot in back of the right pedal. When the brake pedals are not latched together, the latch should rest in the slot in back of the left brake pedal.

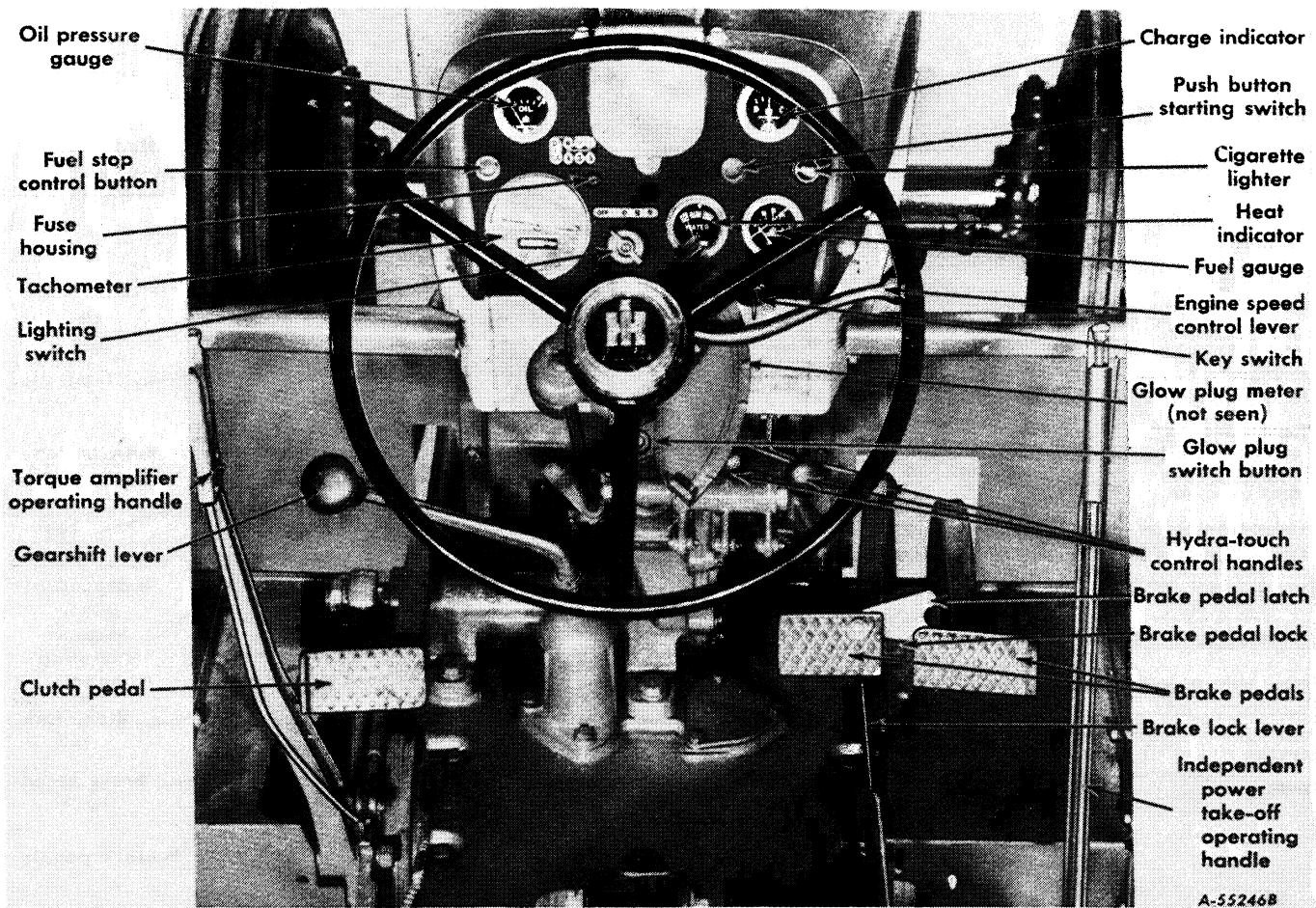
The brake pedal lock (Illusts. 5 or 6) is used to lock the brake pedals in the depressed position; this prevents the tractor from moving.

Clutch and Torque Amplifier Hand Lever International 560 Tractor

The clutch hand lever, for the over center engine clutch, when pulled all the way back, disengages the engine from the transmission.

The torque amplifier button, at the top of the hand lever, is used when selecting torque amplifier drive or direct drive positions. See pages 18 and 19 for operating instructions.

INSTRUMENTS AND CONTROLS



Illust. 6-
Instruments and controls on the International 560 Diesel Tractors.

CLUTCH PEDAL

This pedal, when depressed all the way, disengages the engine from the transmission.

FUEL STOP CONTROL BUTTON

The fuel stop control button is used when starting or stopping the engine. Push the button in when starting the engine. Pull it out when stopping the engine.

FUEL GAUGE

With the key switch turned on, the fuel gauge indicates the level of the fuel in the fuel tank.

PUSH BUTTON STARTING SWITCH

Pushing the button in completes the electrical circuit between the battery and the

cranking motor solenoid and causes the cranking motor pinion to engage the flywheel ring gear, thereby cranking the engine. Refer to pages 13 and 14 for starting the engine.

KEY SWITCH

A key-type lock switch is located near the right side of the instrument panel. Turn the key clockwise to a horizontal position, before attempting to start the engine. The key cannot be removed when in this position.

GLOW PLUG SWITCH BUTTON

Push the button in to energize the glow plugs and bring them up to igniting temperature. The glow plug meter indicates whether or not the glow plug system is working.

INSTRUMENTS AND CONTROLS

LIGHTING SWITCH

The switch has four positions: "Off" position; "D" position for dim headlights, instrument lights, and a red taillight; "B" position for bright headlights, instrument lights, and a red taillight; and "R" position for bright headlights, instrument lights, and a white rear light. The red taillight should always be used when traveling on the highway at night or during times of poor visibility. The white rear light is for field use only and should not be used on the highway.

CIGARETTE LIGHTER

Push the lighter in to make electrical contact. When it pops back it is ready for use.

ENGINE SPEED CONTROL LEVER

This lever controls the speed of the engine and, when set in a given position, will maintain a uniform engine speed even though the engine load may vary.

When the lever is set at the top indicator point (LO), the engine speed is fully retarded. When the lever is at the lower indicator point, the engine speed is fully advanced.

Minimum idle speed (hand throttle) is approximately 650 r.p.m. with the engine speed control lever fully retarded. Never operate the engine at more than the regular governed speed. Excess speeds are harmful. For engine speeds, see "Specifications".

RADIATOR SHUTTER CONTROL CRANK

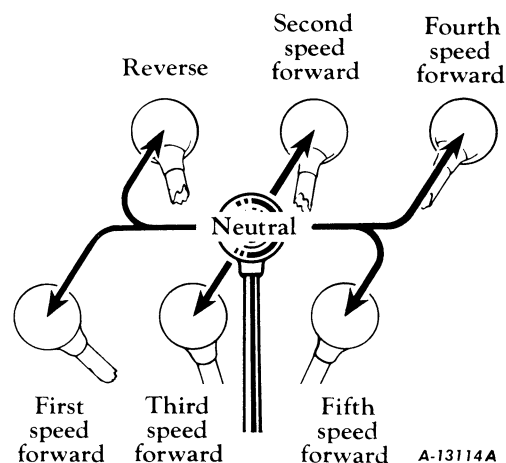
The control crank (on tractors so equipped) opens and closes the radiator shutter, controlling the engine temperature. Turn the crank counterclockwise to close the shutter and clockwise to open the shutter.

SEAT POSITION RELEASE LEVER

This lever is used to hold the seat in the desired position. For additional information, see page 15.

GEARSHIFT LEVER

This lever is used to select the various gear ratios in the transmission. There are five forward speeds and one reverse speed. See Illust. 7.



Illust. 7
Gearshift positions.

Note: The fifth speed is locked out when steel wheels are used; for further instructions, see page 17.

SIDE-MOUNTED BELT PULLEY CONTROL ROD

This rod is used to engage or disengage the side-mounted belt pulley. See page 28 for operating instructions.

INDEPENDENT POWER TAKE-OFF OR REAR-MOUNTED BELT PULLEY OPERATING HANDLE

The same operating handle is used to engage or disengage the independent power take-off or rear-mounted belt pulley. See page 26 for independent power take-off or page 28 for rear-mounted belt pulley operating instructions.

HYDRA-TOUCH SYSTEM CONTROL HANDLES

These handles (Illusts. 5 or 6) operate the Hydra-Touch system. They are used to raise, partially raise or lower direct connected or trailing-type implements. See page 20 for operating instructions.

TORQUE AMPLIFIER OPERATING HANDLE

The torque amplifier operating handle is used to engage or disengage the torque amplifier. See page 18 for operating instructions.

Buy Now



Our support email:

ebooklibonline@outlook.com