

1206 Turbo Diesel Tractor

Operators Manual

1082516R6

Reprinted

CASE III



This symbol means ATTENTION! BECOME ALERT! YOUR SAFETY IS INVOLVED. The message that follows the symbol contains important information about your safety. Carefully read the message. Make sure you fully understand the causes of possible injury or death.

SB001

IF THIS MACHINE IS USED BY AN EMPLOYEE, IS LOANED, OR IS RENTED, MAKE SURE THAT THE OPERATOR UNDERSTANDS THE TWO INSTRUCTIONS BELOW.

BEFORE THE OPERATOR STARTS THE ENGINE:

1. GIVE INSTRUCTIONS TO THE OPERATOR ON SAFE AND CORRECT USE OF THE MACHINE.
2. MAKE SURE THE OPERATOR READS AND UNDERSTANDS THE OPERATOR'S MANUAL FOR THIS MACHINE.



IMPROPER OPERATION OF THIS MACHINE CAN CAUSE INJURY OR DEATH.

BEFORE STARTING THE ENGINE, DO THE FOLLOWING:

1. READ THE OPERATOR'S MANUAL.
2. READ ALL SAFETY DECALS ON THE MACHINE.
3. CLEAR THE AREA OF OTHER PERSONS.

LEARN AND PRACTICE SAFE USE OF MACHINE CONTROLS IN A SAFE, CLEAR AREA BEFORE YOU OPERATE THIS MACHINE ON A JOB SITE.

It is your responsibility to observe pertinent laws and regulations and to follow manufacturer's instructions on machine operation and maintenance.

See your Authorized Case dealer for additional operator's manuals, parts catalogs, and service manuals.



OPERATOR'S MANUAL

McCORMICK®
FARMALL®

and

INTERNATIONAL®

1206

TURBO DIESEL Tractors

OPERATION
MAINTENANCE
LUBRICATION

1
0
8
2
5
1
6
R
G
1



To The Owner

Assembled in this manual are operation, lubrication, and maintenance instructions for the Farmall and International 1206 Turbo Diesel Tractors, including the All-Wheel Drive model. This material has been prepared in detail in the hope that it will help you to better understand the correct care and efficient operation of your tractor.

Your new International Harvester tractor is designed to meet today's exacting operating requirements. The ease and comfort of operation, the ability to match ground speeds to engine power and work requirement, and the effortless versatility of the hydraulic system are intended to lighten your work and shorten your hours on the job.

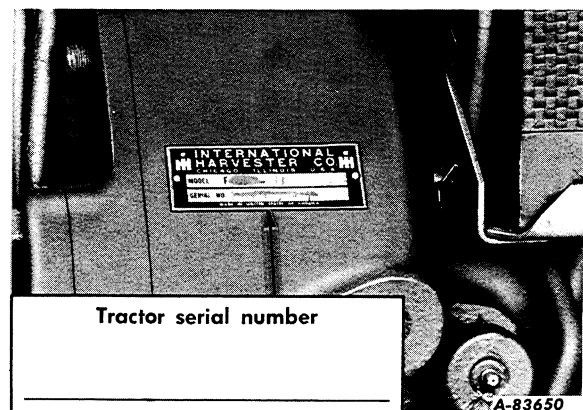
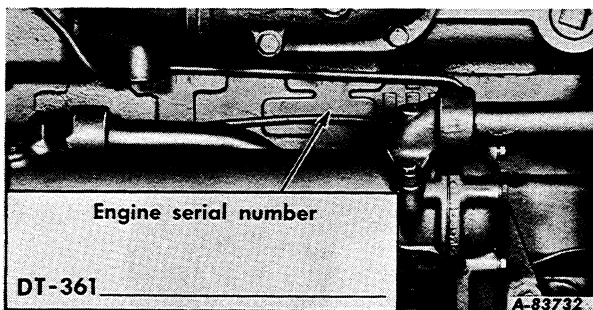
Your local International Harvester dealer is interested in the performance you receive from this tractor. He has factory-trained servicemen, informed in the latest method of servicing tractors, and modern tools, and original-equipment IH service parts which assure proper fit and good performance.

To obtain top performance and assure economical operation the tractor should be inspected, depending on its use, periodically, or at least once a year, by your International Harvester Dealer.

Before you operate the tractor study this manual carefully. It has been prepared to help you operate and maintain your tractor with utmost efficiency. New copies may be ordered from your dealer at a nominal price.

When in need of parts, always specify the tractor and engine serial numbers, including prefix and suffix letters. Write these serial numbers in the spaces provided below.

Note: When transporting a unit equipped with a turbocharger on a high speed carrier, seal the intake and exhaust pipe openings to prevent turbocharger damage.



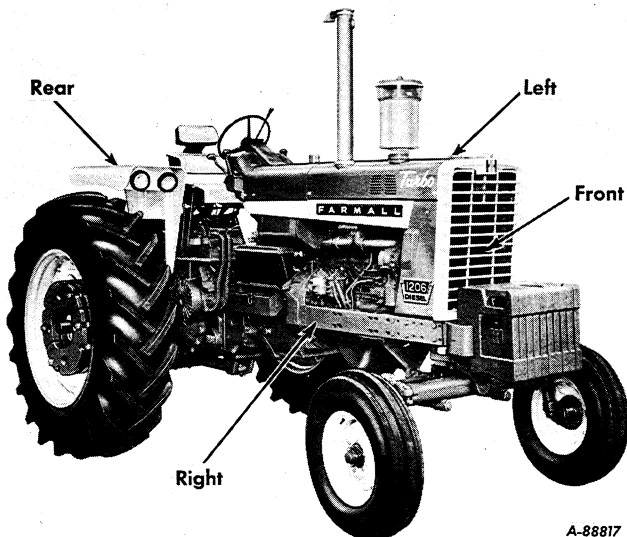
CONTENTS

Description	Page No.
CONTENTS	1
INTRODUCTION	2
INSTRUMENTS AND CONTROLS	3
BEFORE OPERATING YOUR NEW TRACTOR	4
DRIVING THE TRACTOR	4 to 8
ENGINE AND FUEL SYSTEM	8 to 15
TORQUE AMPLIFIER	16
BASIC HYDRAULIC SYSTEM WITH POWER STEERING	17 to 19
HYDRAULIC CONTROLS FOR THREE-POINT FAST-HITCH	19 to 22
THREE-POINT FAST-HITCH	23 to 29
AUXILIARY VALVES AND REMOTE CYLINDERS	30 to 33
HITCHING TRAILING EQUIPMENT TO THE TRACTOR	34, 35
POWER TAKE-OFF	36
COOLING SYSTEM	37 to 39
AIR CLEANING SYSTEM	39 to 43
ELECTRICAL SYSTEM	43 to 55
MINOR ENGINE OPERATIONS	55 to 57
FRONT WHEELS	58 to 60
ALL-WHEEL DRIVE	60, 61
REAR WHEELS	62 to 67
WEIGHTS	68 to 70
PNEUMATIC TIRES	70 to 73
BRAKES	73, 74
ENGINE CLUTCH	75, 76
STORING THE TRACTOR	76, 77
COLD WEATHER PRECAUTIONS	78, 79
TROUBLE SHOOTING	79 to 84
LUBRICATION	84 to 89
LUBRICATION TABLE	89
LUBRICATION GUIDE	90 to 95
PREVENTIVE MAINTENANCE GUIDE	96 to 98
SPECIFICATIONS	98 to 101
EXTRA EQUIPMENT AND ACCESSORIES	102
INDEX	103 to 105

INTRODUCTION



Illust. 2
International 1206 Turbo Diesel Tractor



Illust. 2A
Terms of location

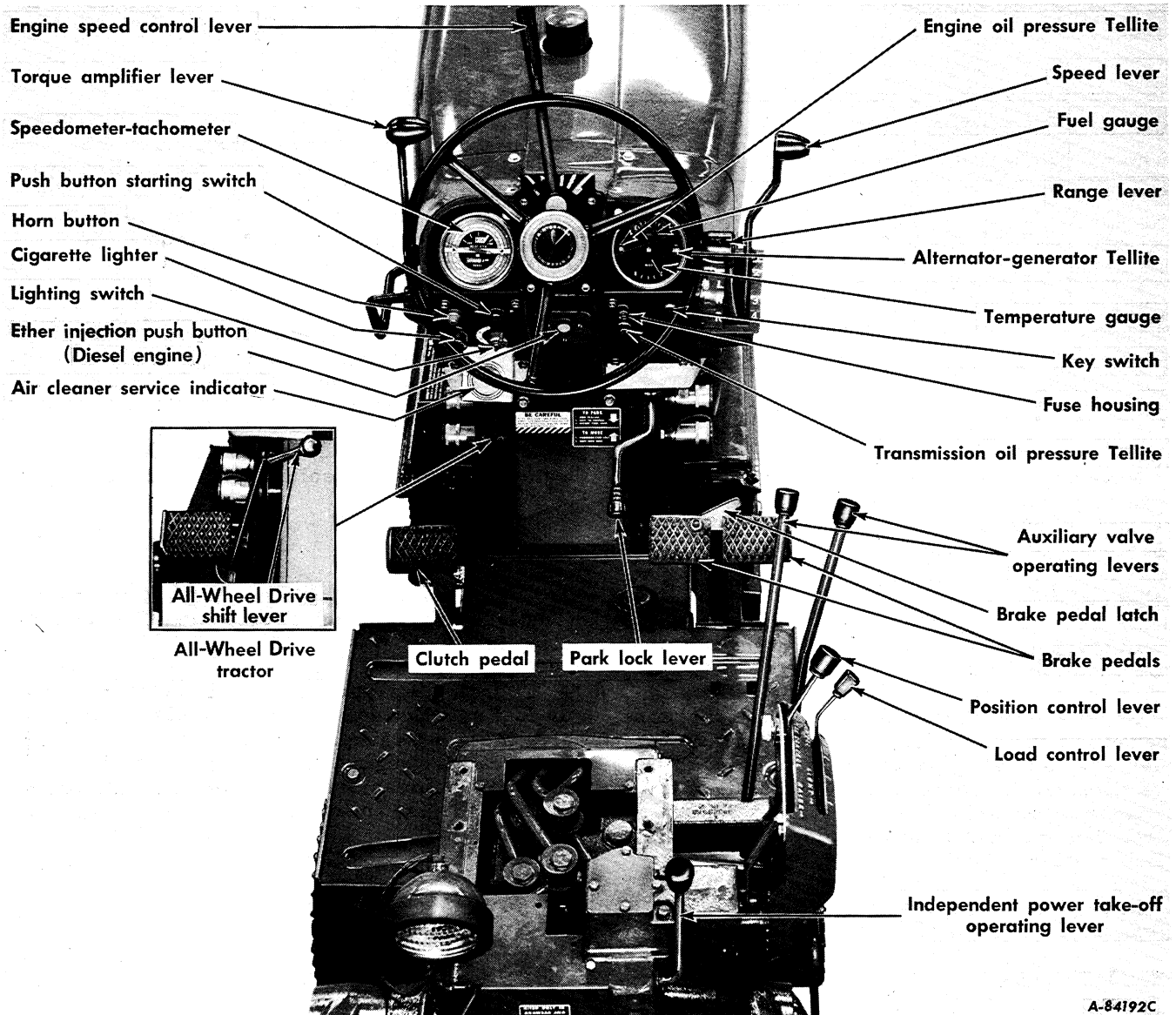
LEFT and RIGHT indicate the left and right sides of the tractor when facing forward in the driver's seat. See Illust. 2A.

The illustrations in this manual are numbered to correspond with the pages on which they appear; for example, Illusts. 2 and 2A are on page 2.

A variety of extra equipment and accessories is available. Refer to page 101. Operating and maintenance instruction on these items is included in the instructions for operating or Maintaining the tractor.

INSTRUMENTS AND CONTROLS

Before attempting to start or operate the tractor, be sure to review all the instructions for the new tractor and thoroughly familiarize yourself with the instruments and controls.



A-84192C

Illust. 3
Location of instruments and controls.

Air cleaner service indicator (page 40)
 Alternator-generator Tellite (pages 11, 53 and 54)
 All-Wheel Drive shift lever (pages 6 and 7)
 Brake pedals (pages 7 and 73)
 Clutch pedals (pages 11, 75 and 76)
 Engine speed control lever (pages 11 and 57)
 Ether starting push-button or remote control knob (page 11)
 Fuel gauge (page 5)
 Hydraulic system control levers (pages 19 to 22)
 Independent power take-off operating lever (page 36)

Key switch (pages 11 and 43)
 Lighting switch (page 52)
 Oil pressure Tellite (pages 9 and 53)
 Park lock lever (pages 6 and 74)
 Push button starting switch (pages 11 and 43)
 Safety starting switch (page 6)
 Speedometer-tachometer (page 6)
 Torque amplifier operating lever (page 8)
 Transmission range and speed levers (page 6 and 11)
 Temperature gauge (page 37)

BEFORE OPERATING YOUR NEW TRACTOR

TRACTOR BREAK-IN PROCEDURE

Never operate an engine immediately under full load, break it in carefully as shown in the table below. Do not overload the engine at any time.

Period	Engine r. p. m.	Load	Remarks
1st hour	3/4 of rated	None	Operate tractor in the higher gears.
2nd and 3rd hours	3/4 of rated	Light	Operate tractor two full gear speeds below normal for load connected to drawbar.
4th through 25th hours	Full	Medium	Operate tractor one full gear speed below normal for load connected to drawbar.

Never operate the engine at more than the regular governed speed. Excessive speeds are harmful. Refer to "Engine Speeds" in the "Specifications" on page 99.

LUBRICATION

Lubricate the entire tractor, using the "Lubrication Guide".

Check the oil levels of the engine crankcase, transmission and differential case, rear axle carriers, and all gear cases to see that they are filled to the correct levels with oil of the proper viscosity for the prevailing temperature. See the "Lubrication Guide" and the "Lubrication Table".

Note: These tractors have a dry-type air cleaner. Do not put oil in the air cleaner.

PNEUMATIC TIRES

Before moving the tractor, check the air pressure in the pneumatic tires and inflate or deflate the pressures recommended in the tables on pages 71 and 72.

DRIVING THE TRACTOR

PREPARING THE TRACTOR FOR EACH DAY'S WORK

Check the level of the coolant in the radiator. See page 37.

Check the oil level in the engine crankcase. Also lubricate the chassis points recommended

AIR CLEANING SYSTEM

Inspect the flexible rubber hose connections the air cleaner and turbocharger. All joints between the air cleaner and turbocharger manifold must be kept tight to prevent dirt from entering the engine.

ENGINE COOLING SYSTEM

Tractors shipped to destinations in the United States and Canada have the cooling system filled with antifreeze solution. Check the coolant level in the radiator. When cold, the coolant level should be 2 inches above the radiator core.

If water is added, use only clean water; soft or rain water is recommended, as it does not contain alkali, which forms scale and eventually clogs the passages.

Never start or operate the engine without water or antifreeze solution in the cooling system.

FUEL SYSTEM

Carefully strain the diesel fuel to be sure it is free from foreign substances. Do not use dirty fuel.

Consult your International Harvester dealer or fuel supplier for the diesel fuels, which will give the most satisfactory performance in your International engine. See the table showing the limiting requirements for diesel fuels recommended for use in International diesel engines on page 10.

PRIMING THE TURBOCHARGER

Before starting a new engine or when the engine has been idle for a month or more, the turbocharger must be primed. To prime the turbocharger, see page 9.

for daily service. See the "Lubrication Guide" and the "Lubrication Table".

Inspect the tires for general condition. See page 70.

DRIVING THE TRACTOR

FUEL GAUGE

When the key switch is turned on, the fuel gauge indicates the level of the fuel in the fuel tank.

Note: The key must be left in the "ON" position while the engine is running so the fuel gauge will function.

FILLING THE FUEL TANK

Caution! Never remove the fuel tank cap or fill the fuel tank when the engine is running, is hot, or when near an open flame. Do not smoke when working around inflammable fuel as the air around the tractor is mixed with highly explosive vapor. When pouring fuel, keep the container or hose nozzle in contact with the metal of the fuel tank to avoid the possibility of an electric spark igniting the fuel.

Fill the fuel tank, preferably at the end of each day's work. This will force out any moisture-laden air and prevent condensation.

The filler cap on the fuel tank has an air vent. This vent should be kept open at all times to assure proper flow of the fuel.

Before starting the tractor for each day's work, open the fuel tank water drain cock on the left side of the tractor to drain off water and sediment. Close the drain as soon as clean fuel appears.

ADJUSTING THE DELUXE CUSHION SEAT

The seat is mounted on an adjustable base, that provides simultaneous height and longitudinal position adjustment.

Before starting the tractor, adjust the seat to provide the most comfortable position for the operator.

The seat is quickly and easily adjusted by means of the seat adjusting handle located at the left side of the seat.

Lift up the handle and move the seat forward or backward to the most comfortable operating position.

Foot Release Lever

The foot release lever provides means of moving the seat from a preset position, rearward out of the operator's way, to place the

seat in the furthest rear position when the operator is driving the tractor from a standing position.

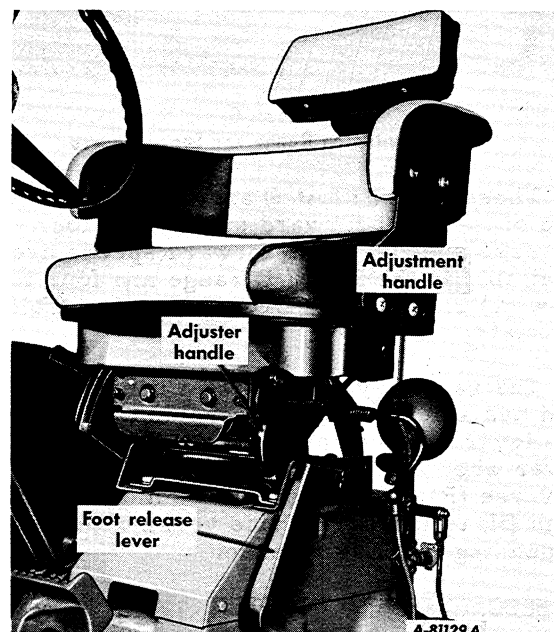
This allows easy access to the platform area, when getting on or off of the tractor. When the operator applies his weight to the seat and moves it forward the linkage returns to the preset position.

Adjusting the Seat to Suit the Operator's Weight

The seat suspension is adjustable to suit the weight of any operator from 100 to 250 pounds. To adjust the suspension, the operator turns an adjuster handle to slide a pointer along a scale until the proper mark is reached.

Turn the adjuster handle (Illust. 5) so the pointer at the front of the seat is set at the number nearest the operator's weight. Place the handle in a near horizontal position after the proper adjustment is made.

The back cushion of the seat can be adjusted to three different positions to the front or rear and three different heights by means of the mounting holes in the back of the cushion support. The back rest extension, is also adjustable to three different heights.



Illust. 5
Seat adjustment controls.

Buy Now



Our support email:

ebooklibonline@outlook.com