

# **154 Lo-Boy Tractor**

## **Operators Manual**

1084151R1

Reprinted

**CASE** 



***This symbol means ATTENTION! BECOME ALERT! YOUR SAFETY IS INVOLVED. The message that follows the symbol contains important information about your safety. Carefully read the message. Make sure you fully understand the causes of possible injury or death.***

SB001

IF THIS MACHINE IS USED BY AN EMPLOYEE, IS LOANED, OR IS RENTED, MAKE SURE THAT THE OPERATOR UNDERSTANDS THE TWO INSTRUCTIONS BELOW.

BEFORE THE OPERATOR STARTS THE ENGINE:

1. GIVE INSTRUCTIONS TO THE OPERATOR ON SAFE AND CORRECT USE OF THE MACHINE.
2. MAKE SURE THE OPERATOR READS AND UNDERSTANDS THE OPERATOR'S MANUAL FOR THIS MACHINE.



**IMPROPER OPERATION OF THIS MACHINE CAN CAUSE INJURY OR DEATH.**

BEFORE STARTING THE ENGINE, DO THE FOLLOWING:

1. READ THE OPERATOR'S MANUAL.
2. READ ALL SAFETY DECALS ON THE MACHINE.
3. CLEAR THE AREA OF OTHER PERSONS.

LEARN AND PRACTICE SAFE USE OF MACHINE CONTROLS IN A SAFE, CLEAR AREA BEFORE YOU OPERATE THIS MACHINE ON A JOB SITE.

It is your responsibility to observe pertinent laws and regulations and to follow manufacturer's instructions on machine operation and maintenance.

See your Authorized Case dealer for additional operator's manuals, parts catalogs, and service manuals.

## To The Owner

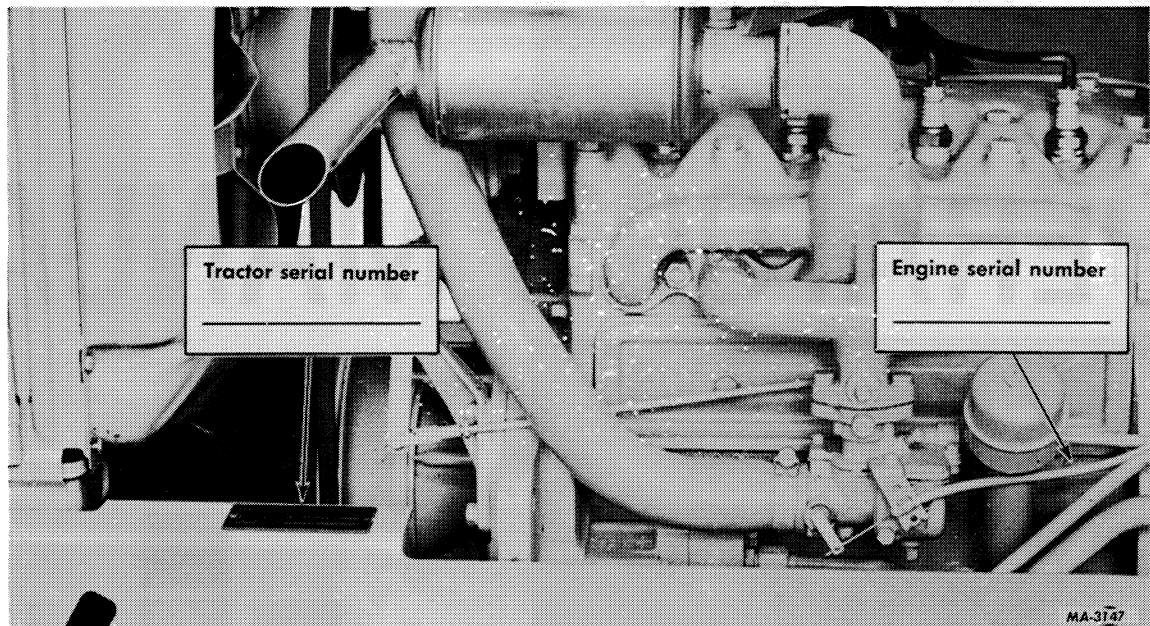
Your new International Harvester tractor is designed to meet today's exacting operating requirements. The ease and comfort of operation, the ability to match ground speeds to engine power and work requirement, and the effortless versatility of the hydraulic system are intended to lighten your work and shorten your hours on the job.

Your local International Harvester dealer is interested in the performance you receive from this tractor. He has factory trained servicemen, informed in the latest method of servicing tractors, and modern tools, and original-equipment IH service parts which assure proper fit and good performance.

To obtain top performance and assure economical operation the tractor should be inspected, depending on its use, periodically, or at least once a year, by your International Harvester Dealer.

Before you operate the tractor, study this manual carefully. It has been prepared to help you operate and maintain your tractor with utmost efficiency. New copies may be ordered from your dealer at a nominal price.

When in need of parts, always specify the tractor and engine serial numbers, including prefix and suffix letters. Write these serial numbers in the spaces provided below.



# CONTENTS

	Page
CONTENTS	1
INTRODUCTION	2
SAFETY INSTRUCTIONS	3
INSTRUMENTS AND CONTROLS	4
BEFORE OPERATING YOUR NEW TRACTOR	5
DRIVING THE TRACTOR	6, 7
GASOLINE ENGINE AND FUEL SYSTEM	8 to 10
HITCHING TRAILING EQUIPMENT TO THE TRACTOR	10
HYDAULIC LIFT	11
THREE POINT HITCH	12 to 15
POWER TAKE-OFF	16, 17
COOLING SYSTEM	17 to 19
AIR CLEANING SYSTEM	20, 21
ELECTRICAL SYSTEM	21 to 30
MINOR ENGINE SERVICE OPERATIONS	31, 32
FRONT AND REAR WHEELS	32
WEIGHTS	33, 34
PNEUMATIC TIRES	34 to 36
BRAKES	36, 37
CLUTCH	38, 39
STORING THE TRACTOR	40, 41
COLD WEATHER PRECAUTIONS	41
TROUBLE SHOOTING	42 to 46
LUBRICATION	46 to 48
LUBRICATION TABLE	49
LUBRICATION GUIDE	50 to 53
PREVENTIVE MAINTENANCE GUIDE	54, 55
SPECIFICATIONS	56, 57
EXTRA EQUIPMENT AND ACCESSORIES	58
INDEX	58, 59

# INTRODUCTION



MA-3148A

**Illust. 2**  
International Cub 154 Lo-Boy Tractor showing terms of location.

Assembled in this manual are operation, lubrication, and maintenance instructions for International Cub 154 Lo-Boy Tractors. This material has been prepared in detail in the hope that it will help you to better understand the correct care and efficient operation of the tractor.

The illustrations in this manual are numbered to correspond with pages on which they appear; for example, **Illust. 4** is on page 4.

Throughout this manual the use of the terms **LEFT**, **RIGHT**, **FRONT**, and **REAR** must be understood to avoid confusion when following instructions. **LEFT** and **RIGHT** indicate the left and right sides of the tractor when facing forward in the driver's seat. Reference to **FRONT** indicates the radiator end of the tractor; to **REAR**; the hitch end. See **Illust. 2**.

# SAFETY SUGGESTIONS

WORK SAFELY -- FOLLOW THESE RULES.



This symbol is used to call your attention to instructions concerning your personal safety. Be sure to observe and follow these instructions.

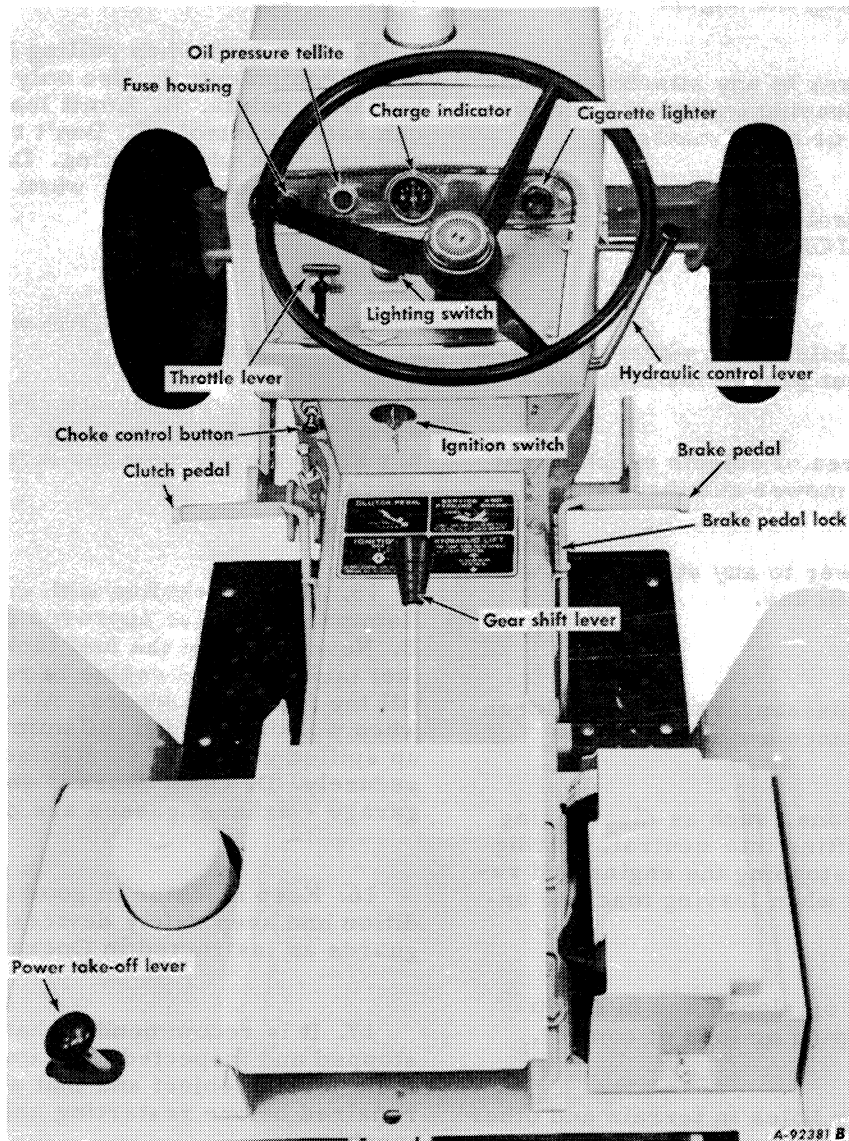
1. Disengage all clutches and shift into neutral before starting the engine.
2. Disengage power to any attachments and stop engine before leaving operator's seat or making any repairs or adjustments.
3. Know the controls and how to stop quickly  
READ THE OPERATOR'S MANUAL.
4. Do not allow children or adults to operate the equipment without proper instructions.
5. Clear work area of objects which might be picked up by the mower and thrown.
6. Disengage power to any attachment when transporting or not in use.
7. Do not carry passengers. Keep children and pets a safe distance away.
8. Take precautions, such as disengaging power take-off, shifting into neutral, setting the parking brake, stopping the engine and removing ignition key when leaving machine unattended.
9. Reduce speed on slopes and in sharp turns to prevent tipping or loss of control.
10. Stay alert for holes in terrain and other hidden hazards.
11. Don't stop or start suddenly when going uphill or downhill.
12. Use care when pulling loads or using heavy equipment: A. Use only approved draw-bar hitch points. B. Limit loads to those you can safely control. C. Don't turn too sharp, and use care when backing. D. Use counter-weight or wheel weights when suggested in Operator's Manual.
13. Watch out for traffic when crossing or near roadways.
14. When using any attachments, never direct discharge of material toward bystanders nor allow anyone near the machine while in operation.
15. Handle gasoline with care - it is highly flammable: A. Use approved gasoline container B. Never remove the fuel tank cap or fill the fuel tank when the engine is running, is hot, or fill the fuel tank indoors. Also, do not smoke when working around inflammable fuel. Wipe up spilled gasoline. C. Replace gasoline cap securely. D. Open doors if engine is in a garage - exhaust gasses are dangerous.
16. Keep machine in good operating condition and keep safety devices in place. Use guards as instructed in Operator's Manual.
17. It is recommended that the machine be stopped and inspected for damage after striking a foreign object and that any damage be repaired before restarting and operating the machine.

## SLOW MOVING VEHICLE (SMV) EMBLEM AND WARNING LAMP

The bracket and socket for a warning lamp and slow moving vehicle emblem must be attached as near to the rear and center of the vehicle as practical. The slow moving vehicle emblem must be in a place perpendicular to the direction of travel (plus or minus 10 degrees) and be placed centrally at the rear of the vehicle, unobscured and two to six feet above the ground measured from the lower edge of the emblem.

# INSTRUMENTS AND CONTROLS

Before attempting to start or operate the tractor, be sure to review all the instructions for the new tractor and thoroughly familiarize yourself with the instruments and controls.



Illust. 4 – Instruments and controls.  
Page references for items shown in Illust. 4.

- |                                |                    |                                   |                  |
|--------------------------------|--------------------|-----------------------------------|------------------|
| Brake pedal . . . . .          | See page 7.        | Gearshift lever . . . . .         | See page 7.      |
| Brake pedal lock . . . . .     | See pages 7,35,36. | Hydraulic control lever . . . . . | See page 11.     |
| Charge indicator . . . . .     | See page 25.       | Ignition switch . . . . .         | See page 29.     |
| Choke control button . . . . . | See page 9.        | Lighting switch button . . . . .  | See pages 26,29. |
| Cigarette lighter . . . . .    | See page 29.       | Oil pressure Tellite . . . . .    | See page 26.     |
| Clutch pedal . . . . .         | See pages 6,37.    | Power take-off lever . . . . .    | See page 16.     |
| Fuse housing . . . . .         | See pages 28,29.   | Throttle lever . . . . .          | See page 7.      |

**Buy Now**



Our support email:

[ebooklibonline@outlook.com](mailto:ebooklibonline@outlook.com)