


**International
674 Tractor
Operators Manual**

1084163R3

Reprinted

CASE III

 ***This symbol means ATTENTION! BECOME ALERT! YOUR SAFETY IS INVOLVED. The message that follows the symbol contains important information about your safety. Carefully read the message. Make sure you fully understand the causes of possible injury or death.*** SB001

IF THIS MACHINE IS USED BY AN EMPLOYEE, IS LOANED, OR IS RENTED, MAKE SURE THAT THE OPERATOR UNDERSTANDS THE TWO INSTRUCTIONS BELOW.

BEFORE THE OPERATOR STARTS THE ENGINE:

1. GIVE INSTRUCTIONS TO THE OPERATOR ON SAFE AND CORRECT USE OF THE MACHINE.
2. MAKE SURE THE OPERATOR READS AND UNDERSTANDS THE OPERATOR'S MANUAL FOR THIS MACHINE.



IMPROPER OPERATION OF THIS MACHINE CAN CAUSE INJURY OR DEATH.

BEFORE STARTING THE ENGINE, DO THE FOLLOWING:

1. READ THE OPERATOR'S MANUAL.
2. READ ALL SAFETY DECALS ON THE MACHINE.
3. CLEAR THE AREA OF OTHER PERSONS.

LEARN AND PRACTICE SAFE USE OF MACHINE CONTROLS IN A SAFE, CLEAR AREA BEFORE YOU OPERATE THIS MACHINE ON A JOB SITE.

It is your responsibility to observe pertinent laws and regulations and to follow manufacturer's instructions on machine operation and maintenance.

See your Authorized Case dealer for additional operator's manuals, parts catalogs, and service manuals.

To The Owner

The International 674 Series Tractors including the Row-Crop Model have synchromesh speed gears with sliding range gears.

Your new International Harvester tractor is designed to meet today's exacting operating requirements. The ease and comfort of operation, the ability to match ground speeds to engine power and work requirement, and the effortless versatility of the hydraulic system are intended to lighten your work and shorten your hours on the job.

The synchromesh transmission will require minimum service if recommended operating and maintenance procedures are followed. Should you have difficulties with the unit consult your International Harvester dealer.

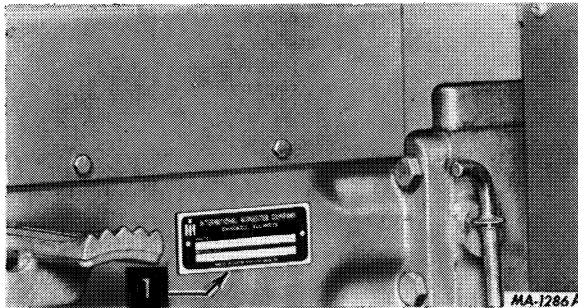
To obtain top performance and assure economical operation the tractor should be

inspected, depending on its use, periodically, or at least once a year, by your International Harvester dealer.

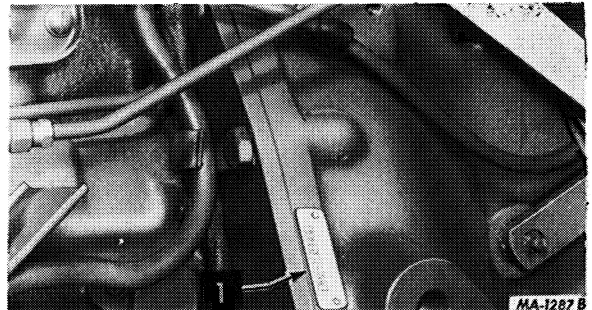
Your local International Harvester dealer is interested in the performance you receive from this tractor. He has factory-trained servicemen, informed in the latest method of servicing tractors, and modern tools, and original-equipment IH service parts which assure proper fit and good performance.

Before you operate the tractor study this manual carefully. It has been prepared to help you operate and maintain your tractor with utmost efficiency. New copies may be ordered from your dealer at a nominal price.

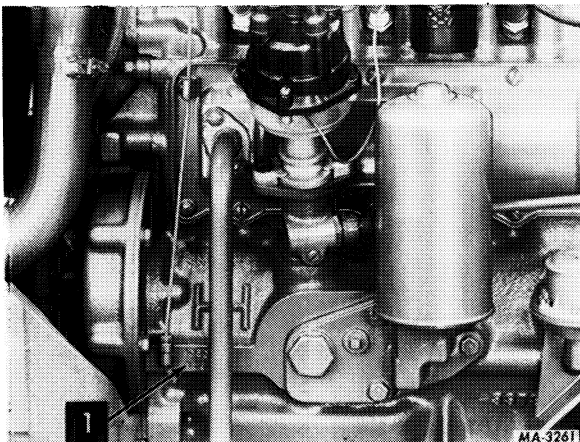
When in need of parts, always specify the tractor and engine serial numbers, including prefix and suffix letters. Write these serial numbers in the spaces provided below.



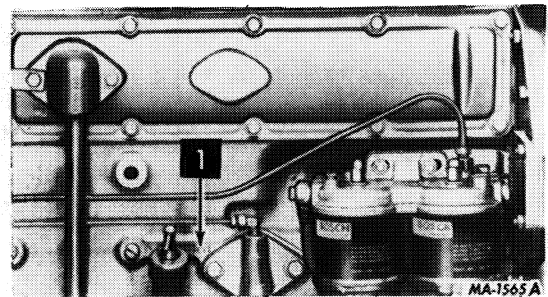
1 - Tractor serial number _____



1 - Skidded unit serial number _____



1 - Gasoline engine serial number
C-200 _____



1 - Diesel engine serial number
D-239 _____

CONTENTS

INTRODUCTION	4, 5	DIESEL ENGINE AND FUEL SYSTEM	21 to 28
WORK SAFELY – FOLLOW THESE RULES	6, 7	Fuel System	22
Servicing and before starting	6	Warranty Notice	22
Starting	6	Venting the Fuel System	22
Transporting	7	Starting the Engine	23
Before Dismounting	7	After the Engine is Running	25
Dismounting	7	Engine Oil Pressure Gauge	26
After an Upset	7	Stopping the Engine	26
INSTRUMENTS AND CONTROLS	8	Changing the Ether Fluid	26
BEFORE OPERATING YOUR NEW TRACTOR	9	Container	26
Tractor Break-in Procedure	9	Fuel Filters	27
Lubrication	9	Fuel Filter Water Drain Valves	28
Tires	9	Fuel Injection Pump and	
Air Cleaning System	9	Nozzles	28
Engine Cooling System	9	Injection Pump Governor	28
Fuel System	9	HYDRAULIC CONTROLS FOR	29 to 33
DRIVING THE TRACTOR	10 to 15	THREE-POINT HITCH	
Preparing the Tractor for		Position Control Lever (Inside	
Each Day's Work	10	Lever)	29
Fuel Gauge	10	Adjustable Stop	30
Filling the Fuel Tank	10	Draft Control (Outside Lever)	30
Suspension Seat	10	Raise Response	32
Steering the Tractor	11	Drop Response	33
Using the Brakes	11	THREE-POINT HITCH	34 to 40
Safety Starting Switch	11	Lift Links and Leveling Cranks	34
Transmission Range and		Hitch Lower Links	35
Speed Levers	12	Hitch Upper Link	35
Accelerator Pedal	12	Restraining Chains	36
Starting the Tractor	12	Stabilizers	37
Differential Lock	13	Power Take-Off	37
Stopping the Tractor	14	Coupling Equipment	37
Park Brake	14	Example of Operating the Three-	
Towing the Tractor	14	Point Hitch with Draft Control	39
Tachometer	15	Uncoupling the Equipment	40
GASOLINE ENGINE AND FUEL SYSTEM	16 to 20	Removing the Three-Point Hitch	
Starting the Engine	17	Linkage	40
After the Engine is Running	18	Installing the Three-Point Hitch	
Engine Oil Pressure Gauge	18	Linkage	40
Stopping the Engine	18	HITCHING TRAILING EQUIPMENT TO	
Cleaning the Fuel Strainer and		THE TRACTOR	41, 42
Sediment Bowl	19	Swinging Drawbar	41
Carburetor	19	Operating Position	42
Solenoid Fuel Shut-Off Valve	20	Storage Position	42

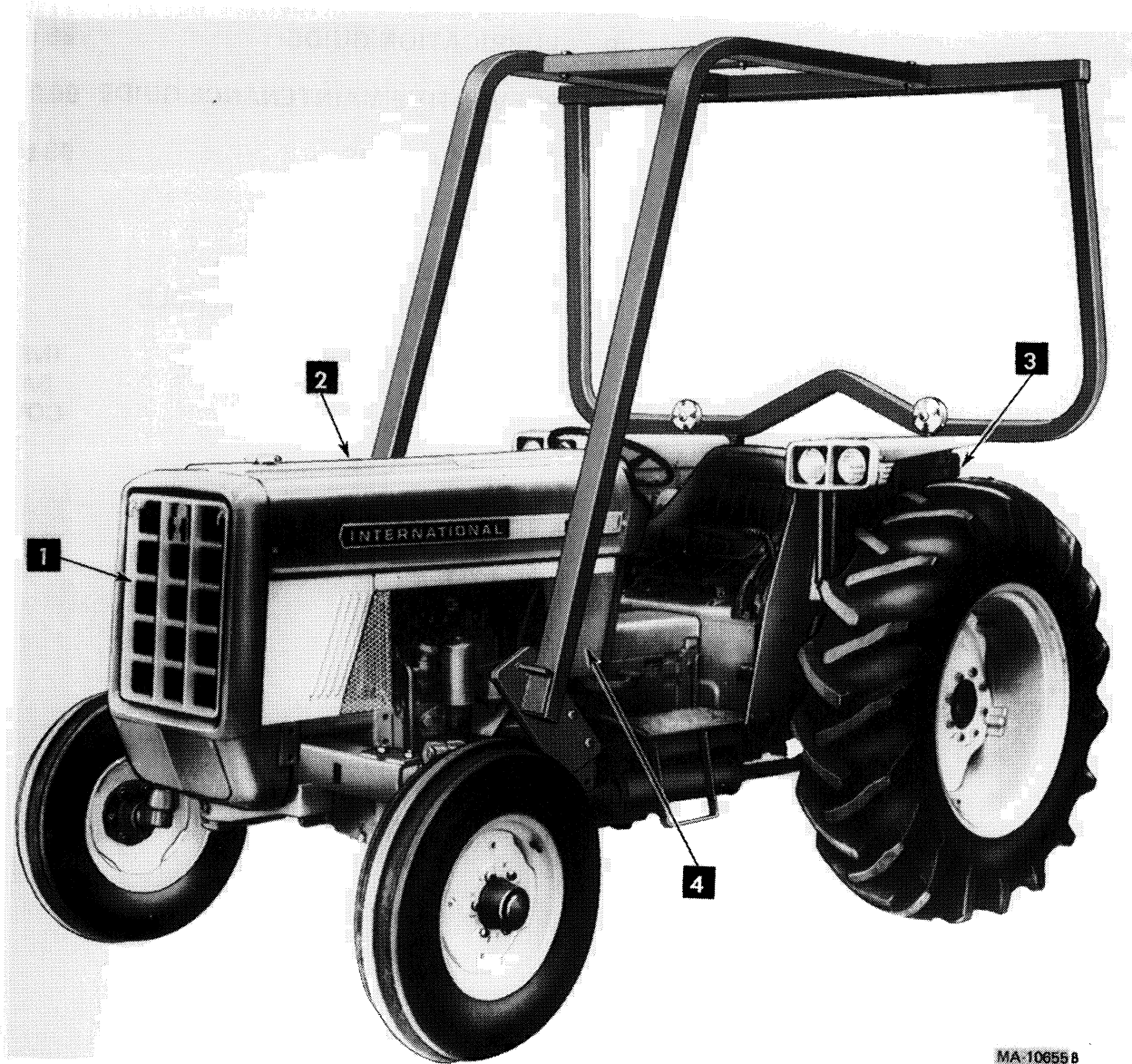
CONTENTS

AUXILIARY VALVE AND REMOTE CYLINDERS	43, 44, 45	Ammeter	57
Connecting Hoses to Junction Ports on Valves	43	Combination Turn Signals and Warning Lights	57
Connecting Hoses to Remote Control Break-Away Couplings at Rear of Tractor	43	Parking Hand Brake Warning Light	57
Thermal Expansion Pressures	44	Fuses	58
General Operation	44	Battery	58
Operating Double-Action Cylinders	44	FRONT WHEELS	60, 61
Operating Single-Action Cylinders	45	Adjusting the Tread Widths	60
Float Lockout	45	Checking the Toe-In	61
Neutral and Float Lockout	45	Adjusting the Front Wheel Toe-In	61
Adding Fluid After Connecting Cylinders and Hoses	45	REAR WHEELS	62 to 68
Air in the Hydraulic System	45	Adjusting the Tread Widths	62
POWER TAKE-OFF	46, 47	Power Adjusted Rear Wheels	64
Operating the Independent Power Take-Off	46	Cast Wheels	66
Engaging or Disengaging the Power Take-Off	47	Adjusting the Tread Widths	66
COOLING SYSTEM	48, 49, 50	Assembling the Rear Wheel Double-Bead Rims	66
Heat Indicator (Coolant)	48	Hub Clamp Bolts	66
Coolants	48	Reversing the Rear Wheels	66
Cooling System Conditioner	48	Disc Wheels	68
Checking the Coolant Level	49	WEIGHTS	69, 70, 71
Draining and Filling the Cooling System	49	Front End Weights	69
Hoses and Clamps	49	Front Wheel Weights	70
Cleaning the Cooling System	49	Rear Wheel Weights (Two-Piece)	70
Thermostat	50	TIRES	72, 73
Cleaning the Radiator Core and Transmission Oil Cooler	50	Front Tires	72
Water Pump, Alternator-Generator, and Fan Belt Tension	50	Rear Tires	72
AIR CLEANING SYSTEM	51, 52	Inflation	73
Dry-Type Air Cleaner	51	Tire Chains	73
Removing the Filter Element	51	ENGINE CLUTCH	74
Automatic Dust Unloader	52	Care and Adjustment of the Engine Clutch	74
ELECTRICAL SYSTEM	53 to 59	STORING THE TRACTOR	75, 76
Charging System for Alternator-Generator	54	Storage	75
Cranking System	54	Removing from Storage	76
Ignition System (Gasoline Engine Only)	54	COLD WEATHER PRECAUTIONS	77
Lighting System	56	Fuel System	77
Lights	56	Electrical	77
Transmission Oil Pressure Tellite	56	Lubrication	77
		Cooling System	77

CONTENTS

LUBRICATION	78 to 83	LUBRICATION TABLE	84
Engine Oil	78	LUBRICATION GUIDE	85 to 89
Gear Lubricant	79	PREVENTIVE MAINTENANCE GUIDE	90,91,92
Lubrication Fitting Grease	80	SPECIFICATIONS	93 to 96
Engine Oil Filter	80	OPTIONAL EQUIPMENT	97
Changing the Engine Oil Filter	81	UNIVERSAL SYMBOLS FOR INSTRUMENTS AND CONTROLS	98
Hydraulic Fluid Filter	81	METRIC (SI) MEASUREMENTS	INSIDE BACK COVER
Lubricating the Front Wheels	83		

INTRODUCTION



MA-10855 B

1 - Front

2 - Right

3 - Rear

4 - Left

Terms of location.

INTRODUCTION

A variety of optional equipment is available. Refer to "Optional Equipment". Operating and maintenance instruction on these items is included in the instructions for operating or maintaining the tractor. Disregard instructions for equipment not on your tractor.

These are a few facts that you should know about your tractor.

To tow the tractor, place the transmission range lever in neutral. Refer to "Towing the Tractor".

Never coast the tractor with the engine shut-off.

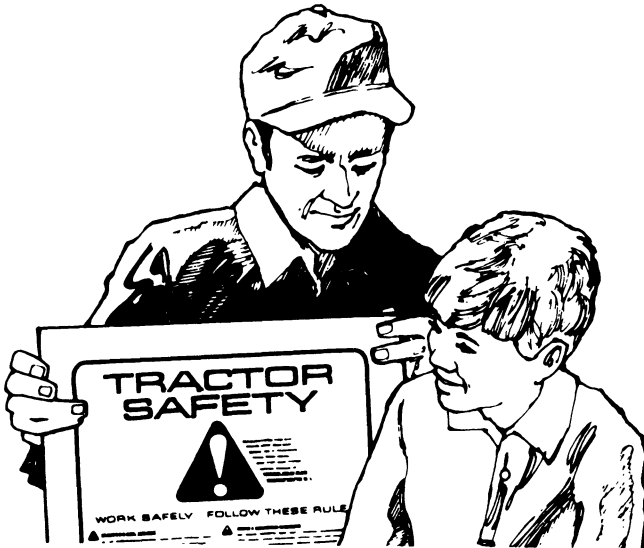
Change the hydraulic fluid filters at the specified interval. See "Lubrication Guide".



WORK SAFELY – FOLLOW THESE RULES

This symbol is used to call your attention to instructions concerning your personal safety. Be sure to observe and follow these instructions.

A CAREFUL OPERATOR IS THE BEST INSURANCE AGAINST AN ACCIDENT



MA-12214

SERVICING AND BEFORE STARTING

Carefully supervise inexperienced operators.

When fueling a tractor, keep any type of open flame away. Do not smoke. Stop the engine and wait for it to cool before removing the fuel cap or refueling.

Be sure that the fuel tank cap is fully tightened against the stop before starting the engine.

Check coolant and engine oil levels, and perform any other necessary services, before starting the engine.

Turn the radiator cap slowly counterclockwise to the pressure release point to allow the pressure or any steam to escape; then press down on the cap and continue to turn until the cap is free to be removed.

Check brakes and clutch pedal for correct operation.

Reduce tipping hazards by spreading wheels as far as your work program permits.

Be sure muffler and exhaust pipe are in place so exhaust gases are discharged above the operator.

Always keep the operator's compartment clean. Keep dirt, trash, and grease from the pedals, steps, mounting handles, steering wheel, and controls.

Always carry a "Charged" fire extinguisher and a first aid kit.

Avoid loose-fitting clothing, which could catch on moving parts.

Mounting assist handles and steps are provided for your safety. Use them when getting on or off the tractor.

STARTING

Know the controls and what they do. Be in the operator's seat and fasten the seat belt. Place the transmission and all other controls in neutral before starting the engine.

Be sure power take-off lever is in the "OFF" or disengaged position before starting the engine. Make sure that the helpers or observers stand clear of the equipment.

Make sure the area is well ventilated.

Power take-off master shield must always be in place on the tractor.

Always keep safety shields in place.

WORK SAFELY – FOLLOW THESE RULES

Only the operator should ride on the tractor. He should sit on the seat with the seat belt fastened.

Keep others, especially children, from riding on steps, fenders, or drawbar, and away from tractor equipment.

Use the drawbar when hitching to a heavy load.

Pull only from drawbar; never hitch to axle housing.

Always keep the tractor in gear when going down hills. A towed implement having a gross weight greater than the weight of the towing tractor must be equipped with its own brakes.

Always avoid sudden starts, excessive speed, and sudden stops.

Check overhead clearance carefully before driving under power lines, guy wires, bridges, low hanging tree branches, entering or leaving building, etc.

To assure the protection provided by design, the protective structure must not be altered by welding, cutting, drilling, or in any other manner.

TRANSPORTING

Before moving on public roads, or from field to field, lock the brake pedals together for simultaneous operation.

Reduce speed when traveling on rough roads, sharp turns, and down steep hills.

Avoid heavily-traveled roads when moving equipment, if at all possible.

Use warning devices (i.e. flags, S.M.V. emblem, lights, etc.) which are approved for use by your local government agencies, when moving equipment on public roads. Keep these devices clean and in good working condition.

When transporting equipment on the highway, it is recommended that a safety chain with a rating greater than the gross load of the towed equipment, be used.

Be sure hitches and/or drawbars are properly stabilized before towing equipment.

Be courteous, have consideration for other traffic using the road.

BEFORE DISMOUNTING

Always wait for the tractor to come to a complete stop, disengage the PTO, lower equipment to the ground, place the transmission and all other controls in the neutral position, engage the park brake so the tractor will not roll, and remove the key to avoid unauthorized operation when leaving the tractor.

DISMOUNTING

Use the assist handles and steps provided, step out of the operator's area backwards.



CAUTION! Do not attempt to step out of the operator's area face forward or you may fall.

AFTER AN UPSET

No attempt should be made to straighten, weld or otherwise repair the protective frame for further service. It must be replaced in its entirety.

NOTE: Do not operate the tractor or run the engine until a thorough inspection has been made to determine that all components, controls, system, etc. are operating correctly. The tractor must be inspected for other damage, preferably, by your International Harvester dealer, and all necessary corrections made.

Buy Now



Our support email:

ebooklibonline@outlook.com