

666 Tractor

Operators Manual

1084168R1

Reprinted

CASE III



This symbol means ATTENTION! BECOME ALERT! YOUR SAFETY IS INVOLVED. The message that follows the symbol contains important information about your safety. Carefully read the message. Make sure you fully understand the causes of possible injury or death.

SB001

IF THIS MACHINE IS USED BY AN EMPLOYEE, IS LOANED, OR IS RENTED, MAKE SURE THAT THE OPERATOR UNDERSTANDS THE TWO INSTRUCTIONS BELOW.

BEFORE THE OPERATOR STARTS THE ENGINE:

1. GIVE INSTRUCTIONS TO THE OPERATOR ON SAFE AND CORRECT USE OF THE MACHINE.
2. MAKE SURE THE OPERATOR READS AND UNDERSTANDS THE OPERATOR'S MANUAL FOR THIS MACHINE.



IMPROPER OPERATION OF THIS MACHINE CAN CAUSE INJURY OR DEATH.

BEFORE STARTING THE ENGINE, DO THE FOLLOWING:

1. READ THE OPERATOR'S MANUAL.
2. READ ALL SAFETY DECALS ON THE MACHINE.
3. CLEAR THE AREA OF OTHER PERSONS.

LEARN AND PRACTICE SAFE USE OF MACHINE CONTROLS IN A SAFE, CLEAR AREA BEFORE YOU OPERATE THIS MACHINE ON A JOB SITE.

It is your responsibility to observe pertinent laws and regulations and to follow manufacturer's instructions on machine operation and maintenance.

See your Authorized Case dealer for additional operator's manuals, parts catalogs, and service manuals.

To The Owner

The International Farmall 666 Series Tractors including the Hi-Clear Model have either a conventional clutch and transmission or a hydrostatic drive.

Your new International Harvester tractor is designed to meet today's exacting operating requirements. The ease and comfort of operation, the ability to match ground speeds to engine power and work requirement, and the effortless versatility of the hydraulic system are intended to lighten your work and shorten your hours on the job.

The hydrostatic drive will require minimum service if recommended operating and maintenance procedures are followed. Should you have difficulties with the unit consult your International Harvester dealer.

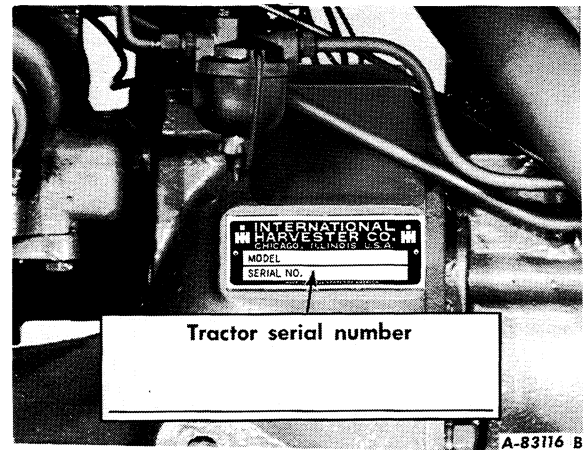
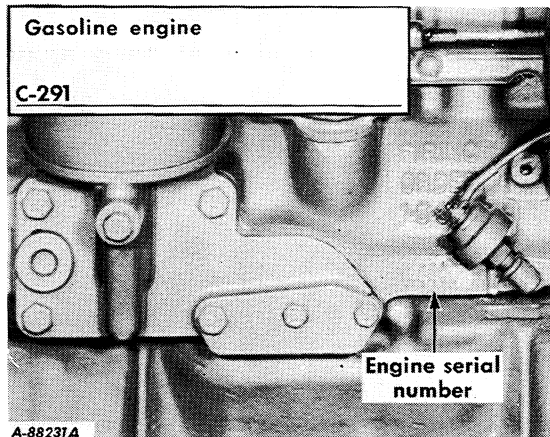
UNDER NO CIRCUMSTANCES SHOULD YOU ATTEMPT TO SERVICE THESE UNITS YOURSELF. Only your dealer is authorized to repair or replace units on the hydrostatic drive under the terms of the warranty.

To obtain top performance and assure economical operation the tractor should be inspected, depending on its use, periodically, or at least once a year, by your International Harvester dealer.

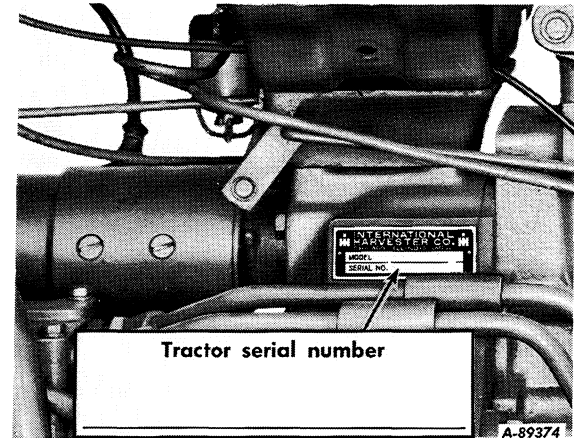
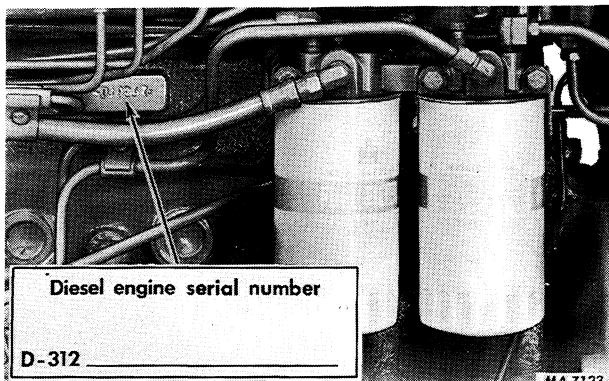
Your local International Harvester dealer is interested in the performance you receive from this tractor. He has factory-trained servicemen, informed in the latest method of servicing tractors, and modern tools, and original-equipment IH service parts which assure proper fit and good performance.

Before you operate the tractor study this manual carefully. It has been prepared to help you operate and maintain your tractor with utmost efficiency. New copies may be ordered from your dealer at a nominal price.

When in need of parts, always specify the tractor and engine serial numbers, including prefix and suffix letters. Write these serial numbers in the spaces provided below.



Tractors with gear drive.



Tractors with hydrostatic drive.

**IMPORTANT FUEL SYSTEM SAFETY WARNING
AND
ANNOUNCEMENT OF FREE, REPLACEMENT GASOLINE CAP**



CAUTION! The following information pertains to personal safety. Be sure to read and follow these instructions.

PROBLEM — Gasoline vapors can build up pressure in your gasoline tank.

All gasoline fuels are more volatile today than ever before. They vaporize and build up pressure in your gasoline tank more easily than in the past. Winter grade gasoline is especially subject to vaporization and pressure build-up when used on hot Spring or Fall days. If you have a tractor which is out of tune or not properly maintained, it can run hotter and increase vaporization.

DANGER — Fire and personal injury.

If the fuel cap is removed when the gasoline tank is hot and vapor pressure has, under certain circumstances, built up in the tank, this sudden release of pressure could force gasoline out of the tank. If the gas cap is not fully secured and tightened, it could come off the tank, and again, gasoline could escape. This sudden eruption of gasoline exposes the operator to, and may cover him with, liquid fuel and vapors and is a clear fire hazard if a source of ignition is present. A running engine is a source of ignition, as are cigarettes, open flames, sparks or a poorly maintained exhaust system. **An immediate fire could occur.** The operator or anyone in the area could be burned and suffer serious injury or even death.

PRECAUTIONS — Observe the following steps for safe operation:

- Always tighten gas caps securely.
- Never, under any circumstances, take the gas cap off a hot or running tractor.
- Never hold over Winter gasoline for use in the Spring. Remove any equipment unnecessary for warm weather operations, such as comfort covers, heat housers, or radiator covers.
- Maintain equipment properly and pay particular attention to electrical, exhaust, fuel, and cooling systems. Repair or replace frayed electrical wires; leaky exhaust manifolds, gaskets, pipes and mufflers; damaged carburetors, sediment bowls and fuel lines. Be sure radiators are clean inside and out. Clean off any accumulation of trash, oil or grease.
- Make sure that fuel cap vent holes are not plugged, gaskets are in good condition, and that cap tangs are firmly riveted. Repair worn, bent, or deformed filler necks and damaged heat shields or shield insulation. If your tractor is not equipped with a heat shield or insulation, install such equipment on applicable models.
- Be alert to any unusual sights and sounds during operation. If you suspect overheating or pressure build-up in the fuel system, do not touch the cap. Turn off the engine and allow the tractor to cool before you touch the cap.

FREE GASOLINE CAP — See your dealer today.

International Harvester has developed a new gasoline cap designed to improve vapor venting and to inhibit the sudden eruption of liquid fuel if the safety precautions against cap removal are not observed.

New caps will be exchanged **free of charge** with owners of certain models of International Harvester farm tractors. To see whether your tractor already has the new cap or to arrange to obtain one, simply contact your local International Harvester dealer. Also ask him for a free International Harvester brochure "New Facts About Fuels" and for free "Warning" decals for all gasoline equipment.

Gasoline Tractor Models Included in Cap Exchange Program (See Note)			
A	100	*504	2404
AV	130	F-544 Only	2424
B	140	560	2444
BN	200	600	2504
C	230	*606	2544
H	240	650	*2606
HV	300	F-656 Only	2706
M	330	660	2756
MV	340	666	2806
O	350	686	2826
OS	400	706	2856
W	404	756	
WR	424	766	
70	444	806	
86	450	826	
	460	856	

NOTE: New cap **will not** fit on any of these tractors.

B-275	I-434
B-276	I-544
I -284	I-656
I -354	I-2656
B-414	

* New cap **will not** fit on these tractors above serial numbers shown.

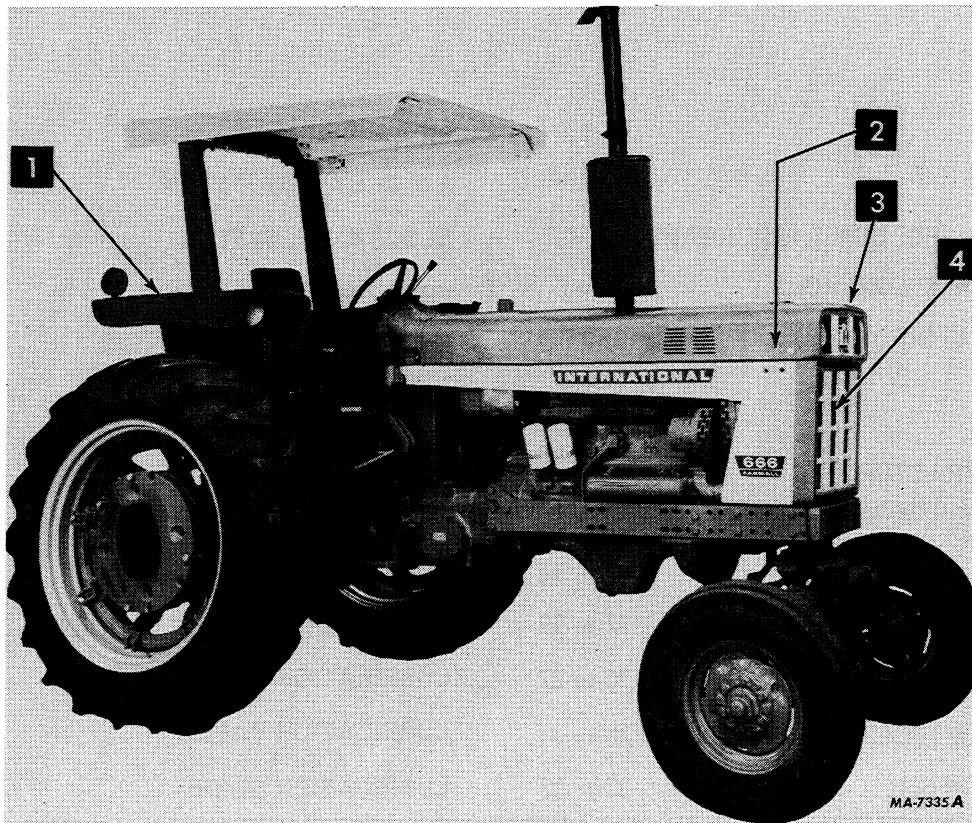
F-504	above serial No. 13400
I -504	above serial No. 14272
I -606	above serial No. 6879
I -2606	above serial No. 6879

New cap **will not** fit on any lawn and garden tractor in the Cadet model series or on any tractor with the gasoline tank behind the operator's seat.

CONTENTS

CONTENTS	1	COOLING SYSTEM	52 to 54
INTRODUCTION	2	AIR CLEANING SYSTEM	54, 55
WORK SAFELY – FOLLOW THESE RULES	3, 4	ELECTRICAL SYSTEM	56 to 61
INSTRUMENTS AND CONTROLS	5 to 7	FRONT WHEELS	62 to 64
BEFORE OPERATING YOUR NEW TRACTOR	8	REAR WHEELS	65 to 68
CLUTCHES	76 to 80	WEIGHTS	69 to 73
DRIVING THE TRACTOR		TIRES	73, 74
Gear drive and Hydrostatic drive	9, 10	BRAKES	75
Gear drive	10 to 12	STORING THE TRACTOR	79, 80
Hydrostatic drive	13 to 16	COLD WEATHER PRECAUTIONS	80
GASOLINE ENGINE AND FUEL SYSTEM	17 to 19	LUBRICATION	81 to 87
DIESEL ENGINE AND FUEL SYSTEM	20 to 27	LUBRICATION TABLE	88
HYDRAULIC CONTROLS FOR HITCHES	28 to 31	LUBRICATION GUIDE	89 to 93
THREE-POINT HITCH	32 to 37	PREVENTIVE MAINTENANCE GUIDE	94, 95
TWO-POINT HITCH	38 to 41	SPECIFICATIONS	96 to 100
HITCHING TRAILING EQUIPMENT TO THE TRACTOR	42 to 45	OPTIONAL EQUIPMENT	101
AUXILIARY VALVES, REMOTE CYLINDERS AND HYDRAULIC OUTLETS	46 to 50	UNIVERSAL SYMBOLS FOR INSTRUMENTS AND CONTROLS	102
POWER TAKE-OFF	50, 51	INDEX	103, 104

INTRODUCTION



1 - Rear 2 - Right 3 - Left 4 - Front

Illust. 2
Terms of location.

LEFT and RIGHT indicate the left and right sides of the tractor when facing forward in the driver's seat. See Illust. 2.

The illustrations in this manual are numbered to correspond with the pages on which they appear; for example, Illusts. 10 and 10A are on page 10.

A variety of optional equipment is available. Refer to "Optional Equipment". Operating and maintenance instruction on these items is included in the instructions for operating or maintaining the tractor. Disregard instructions for equipment not on your tractor.

These are a few facts that you should know about your hydrostatic drive tractor.

You cannot start the engine by towing the tractor, attempts to do so will damage the hydrostatic motor.

To tow the tractor, place the High-Range Selector in neutral. Refer to "Towing Tractor".

Never attempt to effect a high speed coast by putting the speed ratio control lever in neutral or by depressing the Foot-N-Inch pedal.

Never coast the tractor with the engine shut-off.

Change the hydraulic fluid filters at the specified interval. See "Lubrication Guide".

WORK SAFELY—FOLLOW THESE RULES

A CAREFUL OPERATOR IS THE BEST INSURANCE AGAINST AN ACCIDENT

BEFORE STARTING

Know the controls and what they do.

When fueling an engine, keep any type of open flame away. Do Not Smoke! Wait for the engine to cool before refueling it.

Check brakes and clutch for correct adjustments.

Reduce tipping hazards by spreading wheels as far as your work program permits.

Check coolant and engine oil levels, and perform any other necessary services, before starting the engine.

Clean dirt, trash, and grease from operator's platform, pedals, steps, and steering wheel.

Be sure muffler and exhaust pipe extensions are in place so exhaust gases are discharged above operator.

Always carry a "Charged" fire extinguisher and a first aid kit.

Avoid loose-fitting clothing, which could catch on moving parts.

Mounting assist handles and steps are provided for your safety. Use them when getting on or off the tractor.

Put all controls in neutral before starting the engine.

Be sure power take-off lever is in the "OFF" or disengaged position before starting engine.

Before starting engine make sure helpers or observers stand clear of equipment.

Operate the engine only in well ventilated areas.

Release brake completely prior to moving tractor.

DURING OPERATION

Power take-off master shield must always be in place on the tractor.

Use the drawbar in lowest position when hitching to a heavy load, such as manure spreaders, loaded two-wheel trailers, and heavy wagons.

Pull only from drawbar; never hitch to axle housing.

Shift transmission to neutral and set brake before dismounting to hitch equipment.

Keep safety shields in place when using power take-off.

Disengage PTO and shut off the engine before adjusting or unclogging power driven machinery.

Only the operator should ride on the tractor. He should sit on seat or stand on the platform.

Keep others, especially children, from riding on steps, fenders, or drawbar, and away from tractor and equipment.

Continued on next page

WORK SAFELY—FOLLOW THESE RULES

DURING OPERATION - Continued

Reduce speed before making a turn.

Always keep the tractor in gear when going down steep hills.

Avoid . . . sudden starts, excessive speed, and sudden stops . . . when operating on hillside, rough ground, and most off-the-road operations.

Carefully supervise inexperienced operators.

Stop the engine before leaving the tractor, and engage the brakes.

Hydraulic fluid escaping under pressure can have enough force to penetrate the skin. Hydraulic fluid may also infect a minor cut or opening in the skin. If injured by escaping fluid, see a doctor at once. Serious infection or reaction can result if medical treatment is not given immediately. Make sure all connections are tight and that hoses and lines are in good condition before applying pressure to the system. Relieve all pressure before disconnecting the lines or performing other work on the hydraulic system. To find a leak under pressure use a small peice of cardboard or wood. Never use hands.

TRANSPORTING

Reduce speed when traveling on rough roads.

Avoid heavily-traveled roads when moving equipment, if at all possible.

Use warning devices (ie, flags, S.M.V. emblem, lights, etc.) which are approved for use by your local government agencies, when moving equipment on public roads. Keep these devices clean and in good working condition.

Be sure hitches and/or drawbars are properly stabilized before towing equipment.

When moving on public roads, or from field to field, lock brake pedals together for simultaneous operation when making a stop.

Be courteous, have consideration for other traffic using the road.

AFTER OPERATING

Wait for tractor to "STOP" before dismounting.

Lower equipment to ground before leaving tractor.

Shut off engine and remove ignition key.

Lock the brakes so tractor will not roll.

To remove the radiator cap when the engine is "HOT", turn the cap to pressure release point - let pressure and steam escape - then remove it.

Buy Now



Our support email:

ebooklibonline@outlook.com