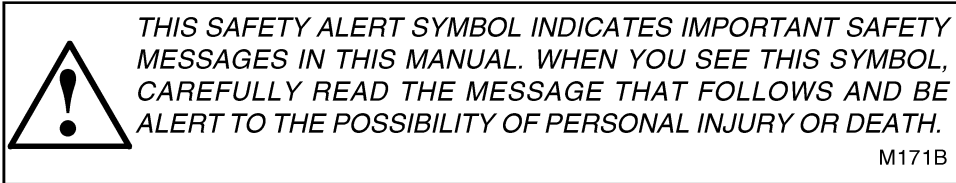


574
International Tractor
Operators Manual

1084225R4

Reprinted




CASE III



If Safety Decals on this machine use the words **Danger, Warning or Caution**, which are defined as follows:

- **DANGER:** Indicates an immediate hazardous situation which if not avoided, will result in death or serious injury. The color associated with Danger is RED.
- **WARNING:** Indicates an potentially hazardous situation which if not avoided, will result in serious injury. The color associated with Warning is ORANGE.
- **CAUTION:** Indicates an potentially hazardous situation which if not avoided, may result in minor or moderate injury. It may also be used to alert against unsafe practices. The color associated with Caution is YELLOW.

If Safety Decals on this machine are ISO two panel Pictorial, decals are defined as follows:

- The first panel indicates the nature of the hazard.
- The second panel indicates the appropriate avoidance of the hazard.
- Background color is YELLOW.
- Prohibition symbols such as   and  if used, are RED.



WARNING

IMPROPER OPERATION OF THIS MACHINE CAN CAUSE INJURY OR DEATH. BEFORE USING THIS MACHINE, MAKE CERTAIN THAT EVERY OPERATOR:

- Is instructed in safe and proper use of the machine.
- Reads and understands the Manual(s) pertaining to the machine.
- Reads and understands ALL Safety Decals on the machine.
- Clears the area of other persons.
- Learns and practices safe use of machine controls in a safe, clear area before operating this machine on a job site.

It is your responsibility to observe pertinent laws and regulations and follow Case Corporation instructions on machine operation and maintenance.

To The Owner

THIS MANUAL IS FOR TRACTORS WITH SERIAL NO. 100,001 AND ABOVE

The International 574 Series Tractors including the Row-Crop Model have synchromesh speed gears with sliding range gears.

Your new International Harvester tractor is designed to meet today's exacting operating requirements. The ease and comfort of operation, the ability to match ground speeds to engine power and work requirement, and the effortless versatility of the hydraulic system are intended to lighten your work and shorten your hours on the job.

The synchromesh transmission will require minimum service if recommended operating and maintenance procedures are followed. Should you have difficulties with the unit consult your International Harvester dealer.

To obtain top performance and assure economical operation the tractor should be inspected, depending on its use, periodically, or at least once a year, by your International Harvester dealer.

Your local International Harvester dealer is interested in the performance you receive from this tractor. He has factory-trained servicemen, in-

formed in the latest method of servicing tractors, and modern tools, and original-equipment IH service parts which assure proper fit and good performance.

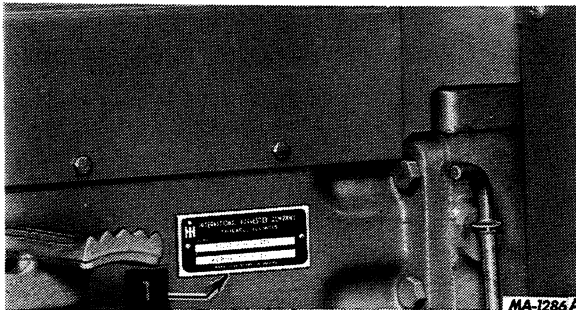
Before you operate the tractor study this manual carefully. It has been prepared to help you operate and maintain your tractor with utmost efficiency. New copies may be ordered from your dealer at a nominal price.

When in need of parts, always specify the tractor and engine serial numbers, including prefix and suffix letters. Write these serial numbers in the spaces provided below.

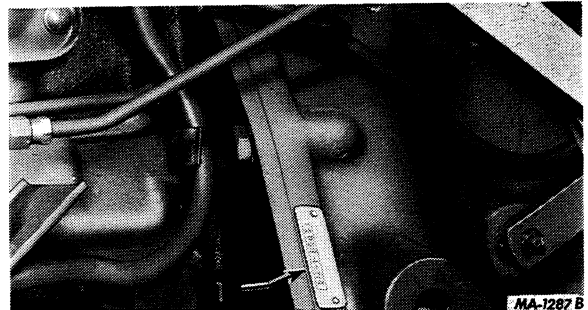


Universal symbols are used to pictorially assist in identification and operation.

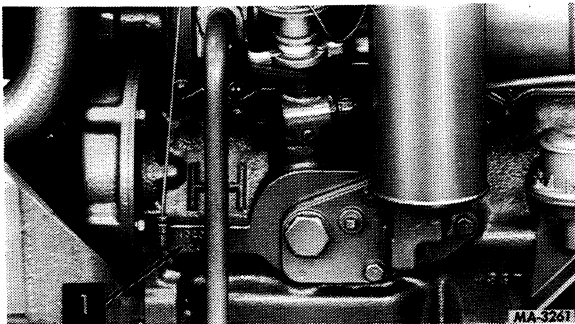
Throughout this manual, an identifying symbol is placed by the instructions like this example for the engine oil pressure gauge. The cylinder block in the symbol represents the engine, the drop signifies oil, and the arrows indicate pressure. Use of this symbol indicates engine oil pressure and is an effort to overcome language differences.



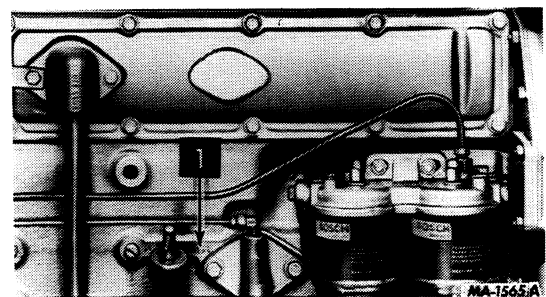
1 - Tractor serial number



1 - Skidded unit serial number



1 - Gasoline engine serial number
C-200 _____



1 - Diesel engine serial number
D-239 _____

CONTENTS

INTRODUCTION	4	DIESEL ENGINE AND FUEL SYSTEM	17 to 22
WORK SAFELY – FOLLOW THESE RULES	5, 6	Fuel System	18
Servicing and Before Starting	5	Warranty Notice	18
Starting	5	Venting the Fuel System	18
During Operation	5	Starting the Engine	18
Transporting	6	After the Engine is Running	20
Before Dismounting	6	Engine Oil Pressure Gauge	20
Dismounting	6	Stopping the Engine	20
After an Upset	6	Changing the Ether Fluid	
INSTRUMENTS AND CONTROLS	7	Container	20
BEFORE OPERATING YOUR NEW TRACTOR	8	Fuel Filters	21
Tractor Break-in Procedure	8	Fuel Filter Water Drain Valves	22
Lubrication	8	Fuel Injection Pump and	
Tires	8	Nozzles	22
Air Cleaning System	8	Injection Pump Governor	22
Engine Cooling System	8	HYDRAULIC CONTROLS FOR THREE-POINT HITCH	23 to 26
Fuel System	8	Position Control Lever (Inside Lever)	23
DRIVING THE TRACTOR	9 to 13	Adjustable Stop	24
Preparing the Tractor for Each Day's Work	9	Draft Control (Outside Lever)	24
Fuel Gauge	9	Raise Response	25
Filling the Fuel Tank	9	Drop Response	26
Suspension Seat	9	THREE-POINT HITCH	27 to 32
Steering the Tractor	10	Lift Links and Leveling Cranks	27
Using the Brakes	10	Hitch Lower Links	28
Safety Starting Switch	10	Hitch Upper Link	28
Transmission Range and Speed Levers	10	Restraining Chains	28
Accelerator Pedal	11	Stabilizers	29
Starting the Tractor	11	Power Take-Off	30
Differential Lock	11	Coupling Equipment	30
Stopping the Tractor	12	Example of Operating the Three-Point Hitch with Draft Control	31
Park Brake	12	Uncoupling the Equipment	32
Towing the Tractor	13	Removing the Three-Point Hitch Linkage	32
Tachometer	13	Installing the Three-Point Hitch Linkage	32
GASOLINE ENGINE AND FUEL SYSTEM	14 to 17	HITCHING TRAILING EQUIPMENT TO THE TRACTOR	33, 34
Starting the Engine	14	Swinging Drawbar	33
After the Engine is Running	15	Operating Position	33
Engine Oil Pressure Gauge	15	Storage Position	34
Stopping the Engine	15		
Cleaning the Fuel Strainer and Sediment Bowl	15		
Carburetor	16		
Solenoid Fuel Shut-Off Valve	17		

CONTENTS

AUXILIARY VALVE AND REMOTE CYLINDERS	34, 35, 36	Combination Turn Signals and Warning Lights	45 46
Connecting Hoses to Junction Ports on Valves	34	Parking Hand Brake Warning Light	46
Connecting Hoses to Remote Control Break-Away Couplings at Rear of Tractor	34	Fuses	46
Thermal Expansion Pressures	35	Battery	46
General Operation	35	FRONT WHEELS	47, 48, 49
Operating Double-Action Cylinders	35	Adjusting the Tread Widths	47
Operating Single-Action Cylinders	36	Checking the Toe-In	49
Float Lockout	36	Adjusting the Front Wheel Toe-In	49
Neutral and Float Lockout	36	REAR WHEELS	49 to 55
Adding Fluid After Connecting Cylinders and Hoses	36	Adjusting the Tread Widths	51
Air in the Hydraulic System	36	Power Adjusted Rear Wheels	51
POWER TAKE-OFF	37, 38	Cast Wheels	53
Operating the Independent Power Take-Off	37	Adjusting the Tread Widths	53
Engaging or Disengaging the Power Take-Off	37	Assembling the Rear Wheel	53
COOLING SYSTEM	38, 39, 40	Double-Bead Rims	53
Heat Indicator (Coolant)	39	Hub Clamp Bolts	53
Coolants	39	Reversing the Rear Wheels	53
Cooling System Conditioner	39	Disc Wheels	55
Checking the Coolant Level	39	WEIGHTS	56, 57, 58
Draining and Filling the Cooling System	40	Front End Weights	56
Hoses and Clamps	40	Front Wheel Weights	56
Thermostat	40	Rear Wheel Weights (Two-Piece)	57
Cleaning the Radiator Core and Transmission Oil Cooler	40	TIRES	59, 60
Water Pump, Alternator-Generator and Fan Belt Tension	40	Front Tires	59
AIR CLEANING SYSTEM	41, 42	Rear Tires	59
Dry-Type Air Cleaner	41	Inflation	60
Removing the Filter Element	41	Tire Chains	60
Automatic Dust Unloader	42	ENGINE CLUTCH	61
ELECTRICAL SYSTEM	42 to 47	Care and Adjustment of the Engine Clutch	61
Charging System for Alternator-Generator	43	STORING THE TRACTOR	62, 63
Cranking System	43	Storage	62
Ignition System (Gasoline Engine Only)	44	Removing from Storage	62, 63
Lighting System	44	COLD WEATHER PRECAUTIONS	63
Lights	44	Cooling System	63
Transmission Oil Pressure Tellite	45	Fuel System	63
Ammeter	45	Electrical	63
		Lubrication	63

CONTENTS

LUBRICATION	64 to 68	LUBRICATION TABLE	69
Engine Oil	64	LUBRICATION GUIDE	70 to 73
Gear Lubricant	64	PREVENTIVE MAINTENANCE GUIDE	74, 75, 76
Lubrication Fitting Grease	65	SPECIFICATIONS	76 to 79
Engine Oil Filter	65	OPTIONAL EQUIPMENT	80
Changing the Engine Oil Filter	66	METRIC (SI) MEASUREMENTS	INSIDE BACK COVER
Hydraulic Fluid Filter	66		
Greasing the Front Wheels	67, 68		



CAUTION

Read the Operator's Manual.

Learn to operate this machine SAFELY.

Be alert. Observe ALL Safety Practices.

Machines can be hazardous in the hands of an UNFAMILIAR, UNTRAINED or COMPLACENT operator.

Don't risk INJURY or DEATH.

MA-10034

INTRODUCTION



MA-7871B

1 - Rear

2 - Right

3 - Left

4 - Front

Terms of location.

LEFT and RIGHT indicate the left and right sides of the tractor when facing forward in the driver's seat.

A variety of optional equipment is available. Refer to **"Optional Equipment"**. Operating and maintenance instruction on these items is included in the instructions for operating or maintaining the tractor. Disregard instructions for equipment not on your tractor.

These are a few facts that you should know about your tractor.

To tow the tractor, place the transmission range lever in neutral. Refer to **"Towing the Tractor"**.

Never coast the tractor with the engine shut-off.

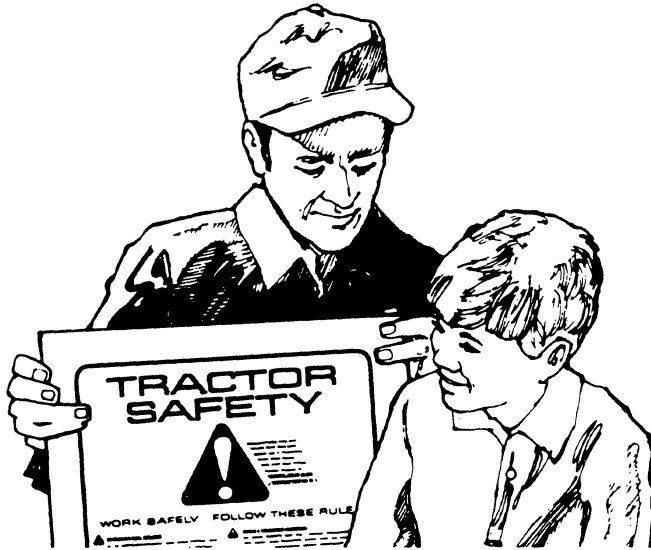
Change the hydraulic fluid filters at the specified interval. **"See Lubrication Guide"**

WORK SAFELY — FOLLOW THESE RULES



This symbol is used to call your attention to instructions concerning your personal safety. Be sure to observe and follow these instructions.

A CAREFUL OPERATOR IS THE BEST INSURANCE AGAINST AN ACCIDENT



MA-12214

SERVICING AND BEFORE STARTING

Carefully supervise inexperienced operators.

When fueling a tractor, keep any type of open flame away. Do not smoke. Stop the engine and wait for it to cool before removing the fuel cap or refueling.

Be sure that the fuel tank cap is fully tightened against the stop before starting the engine.

Check coolant and engine oil levels, and perform any other necessary services, before starting the engine.



Turn the radiator cap slowly counter-clockwise to the pressure release point to allow the pressure or any steam to escape; then press down on the cap and continue to turn until the cap is free to be removed.

Check brakes and clutch pedal for correct operation.

Reduce tipping hazards by spreading wheels as far as your work program permits.

Be sure muffler and exhaust pipe are in place so exhaust gases are discharged above the operator.

Always keep the operator's compartment clean. Keep dirt, trash, and grease from the pedals, steps, mounting handles, steering wheel, and controls.

Always carry a "Charged" fire extinguisher and a first aid kit.

Avoid loose-fitting clothing, which could catch on moving parts.

Mounting assist handles and steps are provided for your safety. Use them when getting on or off the tractor.

STARTING

Know the controls and what they do. Be in the operator's seat and fasten the seat belt. Place the transmission and all other controls in neutral before starting the engine.

Be sure power take-off lever is in the "OFF" or disengaged position before starting the engine. Make sure that the helpers or observers stand clear of the equipment.

Make sure the area is well ventilated.

DURING OPERATION

Carefully supervise inexperienced operators.

Hydraulic fluid escaping under pressure can have enough force to penetrate the skin. Hydraulic fluid may also infect a minor cut or opening in the skin. **If injured by escaping fluid, see a doctor at once.** Serious infection or reaction can result if medical treatment is not given immediately. Make sure all connections are tight and that hoses and lines are in good condition before applying pressure to the system. Relieve all pressure before disconnecting the lines or performing other work on the hydraulic system. To find a leak under pressure use a small piece of cardboard or wood. Never use hands.

Buy Now



Our support email:

ebooklibonline@outlook.com