

**International  
364 Tractor**

Operators Manual

1092916R3

Reprinted

**CASE III**



***This symbol means ATTENTION! BECOME ALERT! YOUR SAFETY IS INVOLVED. The message that follows the symbol contains important information about your safety. Carefully read the message. Make sure you fully understand the causes of possible injury or death.***

SB001

IF THIS MACHINE IS USED BY AN EMPLOYEE, IS LOANED, OR IS RENTED, MAKE SURE THAT THE OPERATOR UNDERSTANDS THE TWO INSTRUCTIONS BELOW.

BEFORE THE OPERATOR STARTS THE ENGINE:

1. GIVE INSTRUCTIONS TO THE OPERATOR ON SAFE AND CORRECT USE OF THE MACHINE.
2. MAKE SURE THE OPERATOR READS AND UNDERSTANDS THE OPERATOR'S MANUAL FOR THIS MACHINE.



**IMPROPER OPERATION OF THIS MACHINE CAN CAUSE INJURY OR DEATH.**

BEFORE STARTING THE ENGINE, DO THE FOLLOWING:

1. READ THE OPERATOR'S MANUAL.
2. READ ALL SAFETY DECALS ON THE MACHINE.
3. CLEAR THE AREA OF OTHER PERSONS.

LEARN AND PRACTICE SAFE USE OF MACHINE CONTROLS IN A SAFE, CLEAR AREA BEFORE YOU OPERATE THIS MACHINE ON A JOB SITE.

It is your responsibility to observe pertinent laws and regulations and to follow manufacturer's instructions on machine operation and maintenance.

See your Authorized Case dealer for additional operator's manuals, parts catalogs, and service manuals.

## CONTENTS

	Page No.
DESCRIPTION ... ..	1
INTRODUCTION ... ..	2
SPECIFICATIONS ... ..	3
INSTRUMENTS AND CONTROLS ... ..	6
FOR BETTER PERFORMANCE AND SAFE OPERATION ... ..	9
BEFORE OPERATING A NEW TRACTOR ... ..	10
OPERATION	
OPERATING THE ENGINE ... ..	12
OPERATING THE TRACTOR ... ..	12
HYDRAULIC SYSTEM ... ..	14
REMOTE CYLINDERS ... ..	16
AUXILIARY CONTROL VALVE ... ..	17
PREPARING THE TRACTOR FOR WORK	
DAILY MAINTENANCE ... ..	18
THREE POINT LINKAGE ... ..	18
CHECK CHAINS ... ..	20
AUTOMATIC HITCH (VARY-TOUCH) ... ..	21
POWER TAKE-OFF ATTACHMENTS ... ..	23
TYRE PRESSURES AND BALLASTING ... ..	25
WHEEL TREAD ADJUSTMENT ... ..	26
PREVENTIVE MAINTENANCE	
LUBRICANT SPECIFICATIONS ... ..	28
LUBRICATION GUIDE ... ..	29
LUBRICATION CHART ... ..	30
HOT WEATHER PRECAUTIONS ... ..	32
COLD WEATHER PRECAUTIONS ... ..	33
ROUTINE SERVICING SCHEDULE ... ..	34
MAINTENANCE	
COOLING SYSTEM ... ..	36
AIRCLEANING SYSTEM ... ..	38
ENGINE SERVICING ... ..	39
FUEL SYSTEM ... ..	41
ENGINE CLUTCH ... ..	43
TRANSMISSION ... ..	45
WHEELS AND STEERING ... ..	46
BRAKES ... ..	47
HYDRAULIC SYSTEM ... ..	48
ELECTRICAL SYSTEM ... ..	49
GENERATOR ... ..	50
STARTING MOTOR ... ..	51
SEALED BEAM UNIT ... ..	52
GLOWPLUGS ... ..	53
WIRING DIAGRAM ... ..	54
LEGEND FOR WIRING DIAGRAM ... ..	55
FAULT TRACING CHART ... ..	59

## CONTENTS - Continued

	Page No.
STORING THE TRACTOR ... ..	61
STARTING THE ENGINE AFTER STORAGE ... ..	61
<b>ATTACHMENTS</b>	
WHEEL WEIGHTS ... ..	62
SUSPENSION SEAT ... ..	62
SELF-SEALING COUPLINGS ... ..	63
BELT PULLEY... ..	63
HAND OPERATED DRUM BRAKES ... ..	64
<b>PETROL ENGINE TRACTOR</b>	
SPECIFICATIONS ... ..	65
INSTRUMENTS AND CONTROLS ... ..	66
OPERATING THE ENGINE ... ..	67
MAINTENANCE ... ..	67
FAULT TRACING CHART ... ..	70
STORING THE TRACTOR ... ..	70
STARTING THE ENGINE AFTER STORAGE ... ..	70
ATTACHMENTS ... ..	71



**DELIVERY SERVICE FOR INTERNATIONAL® HARVESTER EQUIPMENT**

This form must be filled out by the dealer and signed by both the dealer and the customer at the time of delivery.

**OWNER'S COPY**

Equipment and Model No. \_\_\_\_\_  
Serial No. \_\_\_\_\_  
Owner \_\_\_\_\_  
Address \_\_\_\_\_  
Town \_\_\_\_\_  
State \_\_\_\_\_ Zip \_\_\_\_\_  
I have thoroughly instructed the buyer on the above described equipment which review included the Operator's Manual content, equipment care, adjustments, and safe operation. The warranty policy provisions were also explained and reviewed.

DEALER'S SIGNATURE \_\_\_\_\_

DATE \_\_\_\_\_

AUTHORIZED SIGNATURE \_\_\_\_\_

**OWNER'S COPY**

..... *Cut Along This Line* .....

**DELIVERY SERVICE FOR INTERNATIONAL® HARVESTER EQUIPMENT**

This form must be filled out by the dealer and signed by both the dealer and the customer at the time of delivery.

**DEALER'S COPY**

Equipment and Model No. \_\_\_\_\_  
Serial No. \_\_\_\_\_  
Owner \_\_\_\_\_  
Address \_\_\_\_\_  
Town \_\_\_\_\_  
State \_\_\_\_\_ Zip \_\_\_\_\_  
I have thoroughly instructed the buyer on the above described equipment which review included the Operator's Manual content, equipment care, adjustments, and safe operation. The warranty policy provisions were also explained and reviewed.

DEALER'S SIGNATURE \_\_\_\_\_

DATE \_\_\_\_\_

AUTHORIZED SIGNATURE \_\_\_\_\_

**DEALER'S COPY**

DESCRIPTION



Illust. 1 Left Front View of 364 Tractor



Illust. 2 Right Front View of 364 Tractor

## INTRODUCTION

Compiled in this manual are the operating and maintenance instructions for INTERNATIONAL 364 TRACTORS.

This material has been prepared in detail to help the operator to better understand the correct care and efficient operation of the tractor.

Throughout this manual the terms LEFT, RIGHT, FRONT and REAR are to be taken as those applicable to a person seated in the driver's seat facing the radiator.

If information is required that is not given in this manual consult an International Harvester dealer. Dealers are kept informed of the latest methods of servicing machines, they carry stocks of genuine I.H. service parts and are backed in everyway by the full facilities of the International Harvester organisation.

When in need of service parts, always quote the tractor and engine serial numbers. The tractor serial number is stamped on a plate attached to the right side of the clutch housing (Illust. 3). The engine serial number is stamped on the right side of the engine crankcase (Illust. 4). For ready reference record these serial numbers in the space provided above each illustration.

Always use the seat belts, if they are furnished with the unit. However, do not install or use seat belts if the tractor has no protective frame.

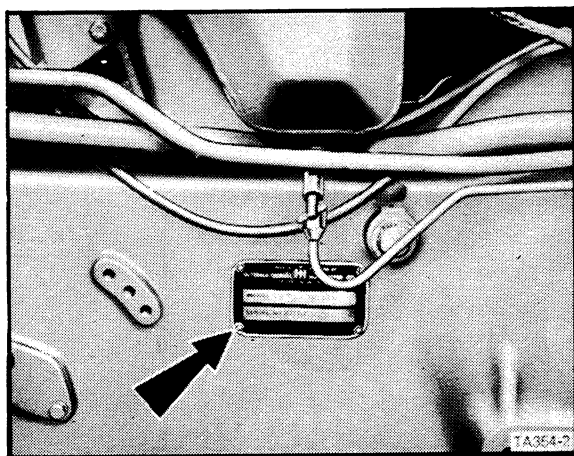
Only the operator should ride on the tractor. He should sit on the seat with the seat belt fastened.

Keep others, especially children, from riding on steps, fenders, or drawbar, and away from tractor equipment.

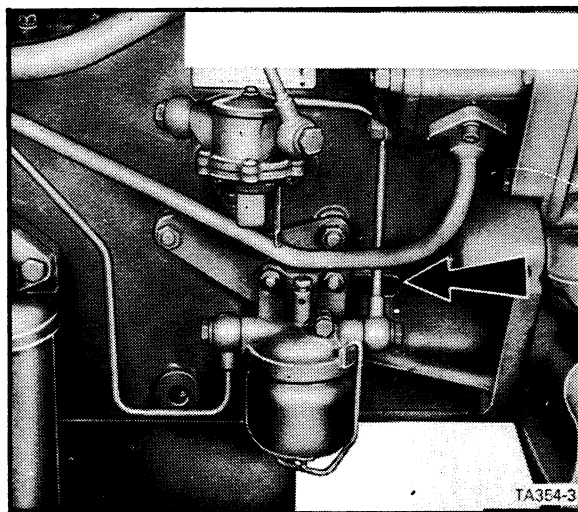
To assure the protection provided by design, the protective structure must not be altered by welding, cutting, drilling, or in any other manner.

### AFTER AN UPSET

No attempt should be made to straighten, weld, or otherwise repair the protective frame or protective cab for further service. It must be replaced in its entirety.



Illust. 3 Tractor Serial Number



Illust. 4 Engine Serial Number

## SPECIFICATIONS

### ENGINE

Make and model	...	...	...	...	...	...	...	...	...	...	...	I.H. BD-154
No. of cylinders	...	...	...	...	...	...	...	...	...	...	...	4
Bore	...	...	...	...	mm (in)	...	...	...	...	...	...	88.9 (3-1/2)
Stroke	...	...	...	...	mm (in)	...	...	...	...	...	...	101.6 (4)
Displacement	...	...	...	...	cm <sup>3</sup> (in <sup>3</sup> )	...	...	...	...	...	...	2524 (154)
Valve clearance (hot)	...	...	...	...	mm (in)	...	...	...	...	...	...	0.508 (0.020)
Firing order	...	...	...	...	...	...	...	...	...	...	...	1, 3, 4, 2
High idle speed	...	...	...	...	rev/min	...	...	...	...	...	...	2310
Low idle speed	...	...	...	...	rev/min	...	...	...	...	...	...	520 to 580
Rated governed speed	...	...	...	...	rev/min	...	...	...	...	...	...	2100

### TRANSMISSION

No. of speeds	...	...	...	...	...	...	...	...	...	...	...	8 forward, 2 reverse
Clutch size												
Standard	...	...	...	...	mm (in)	...	...	...	...	...	...	279.4 (11)
Heavy duty	...	...	...	...	mm (in)	...	...	...	...	...	...	279.4 (11)
Dual-engine	...	...	...	...	mm (in)	...	...	...	...	...	...	279.4 (11)
Dual - P.T.O.	...	...	...	...	mm (in)	...	...	...	...	...	...	228.6 (9)

### TRACTOR SPEEDS, on basic tyres at 2000 engine rev/min

GEAR	STANDARD	
	KPH	MPH
L1	2.3	1.4
L2	3.9	2.4
L3	5.6	3.5
H1	6.6	4.1
L4	8.2	5.1
H2	11.4	7.1
H3	16.3	10.1
H4	24.1	15.0
LOW REVERSE	3.5	2.2
HIGH REVERSE	10.1	6.3

### P.T.O. SPEEDS

Refer to POWER TAKE-OFF ATTACHMENT

### HYDRAULIC SYSTEM

Operating pressure	...	...	...	kg/cm <sup>2</sup> (lb/in <sup>2</sup> )	...	...	...	...	...	155 to 168 (2200 to 2400)
Lift at lower links	...	...	...	kg (lb)	...	...	...	...	...	1180 (2600)
Max. lift force at automatic hitch	...	...	...	kg (lb)	...	...	...	...	...	2495 (5500)

### COOLING SYSTEM

Operating pressure	...	...	...	kg/cm <sup>2</sup> (lb/in <sup>2</sup> )	...	...	...	...	...	0.492 (7)
--------------------	-----	-----	-----	--	-----	-----	-----	-----	-----	-----------



**Buy Now**



Our support email:

[ebooklibonline@outlook.com](mailto:ebooklibonline@outlook.com)