

**6388/6588/6788
Tractors**

Operator's Manual

1258501C4

Reprinted

CASE III



This symbol means ATTENTION! BECOME ALERT! YOUR SAFETY IS INVOLVED. The message that follows the symbol contains important information about your safety. Carefully read the message. Make sure you fully understand the causes of possible injury or death.

SB001

IF THIS MACHINE IS USED BY AN EMPLOYEE, IS LOANED, OR IS RENTED, MAKE SURE THAT THE OPERATOR UNDERSTANDS THE TWO INSTRUCTIONS BELOW.

BEFORE THE OPERATOR STARTS THE ENGINE:

1. GIVE INSTRUCTIONS TO THE OPERATOR ON SAFE AND CORRECT USE OF THE MACHINE.
2. MAKE SURE THE OPERATOR READS AND UNDERSTANDS THE OPERATOR'S MANUAL FOR THIS MACHINE.



IMPROPER OPERATION OF THIS MACHINE CAN CAUSE INJURY OR DEATH.

BEFORE STARTING THE ENGINE, DO THE FOLLOWING:

1. READ THE OPERATOR'S MANUAL.
2. READ ALL SAFETY DECALS ON THE MACHINE.
3. CLEAR THE AREA OF OTHER PERSONS.

LEARN AND PRACTICE SAFE USE OF MACHINE CONTROLS IN A SAFE, CLEAR AREA BEFORE YOU OPERATE THIS MACHINE ON A JOB SITE.

It is your responsibility to observe pertinent laws and regulations and to follow manufacturer's instructions on machine operation and maintenance.

See your Authorized Case dealer for additional operator's manuals, parts catalogs, and service manuals.

TO THE OWNER

BE SURE THIS OPERATOR'S MANUAL IS KEPT WITH THIS MACHINE AT ALL TIMES, REGARDLESS OF OWNERSHIP.

Before you operate the tractor study this manual carefully. It has been prepared to help you operate and maintain your tractor with utmost efficiency.



This symbol is used to call your attention to instructions concerning your personal safety. Be sure to observe and follow these instructions.

Assembled in this manual are operation, lubrication and maintenance instructions for the International 6388, 6588, and 6788 tractors. This material has been prepared in detail in the hope that it will help you to better understand the correct care and efficient operation of your new tractor.

For prompt, efficient service, always specify the tractor model and serial numbers, including prefix and suffix letters. Write these serial numbers in the spaces provided under "Serial Numbers".

The International 6388, 6588, and 6788 four-wheel drive tractors are designed to distribute the tractor weight on the four driving wheels during operation, and thus provide better floatation and less soil compaction.

Your local International Harvester dealer is interested in the performance you receive from these tractors. He has factory-trained servicemen, informed in the latest method of servicing tractors, modern tools, and original-equipment IH service parts which assure proper fit and good performance.

To obtain top performance and assure economical operation the tractor should be inspected, depending on its use, periodically, or at least once a year by your International Harvester Dealer.



Universal symbols are used to pictorially identify various tractor instruments and controls. Throughout this manual, an identifying symbol is placed by the instructions like this example for engine coolant temperature. The waves signify water or coolant and the thermometer indicates temperature. Regardless of the language used in a nation, and without translation, this symbol means water or coolant temperature.

Optional equipment and accessories are available. Disregard the instructions for equipment not on your tractor.

METRIC (SI) MEASUREMENTS

A standard of metric measurement known as International System of Units (SI) has been adopted for world-wide use. English Units followed by Metric Equivalents are used throughout this manual. (Metric Equivalents are given in parenthesis.)



CAUTION

Read the Operator's Manual.

Learn to operate this machine SAFELY.

Be alert. Observe ALL Safety Practices.

Machines can be hazardous in the hands of an UNFAMILIAR, UNTRAINED or COMPLACENT operator.

Don't risk INJURY or DEATH.

MA-10034

CONTENTS

TO THE OWNER	Inside Front Cover	Defroster 24 Air flow Control Louvers 24 Refrigerant Pressure Indicator Light 24 Dome Light 25 Radio Units 25 Windshield Wiper Control 25 Cigarette Lighter and Ash Tray 25 Data Center 26 Data Center Operation 27 Description of Function Pads, Lights and Display 28 Problems and Data Center Reaction 28 Seat Adjustments 29
SERIAL NUMBERS	4	
WORK SAFELY—FOLLOW THESE RULES	5-9	
Servicing and Before Starting	5	
Starting	6	
During Operation	6	
Transporting	7	
Control Center	7	
Before Dismounting	7	
Dismounting	8	
After an Upset	8	
Product Graphics	8	
INCH-METRIC HARDWARE	10	
HARDWARE TORQUE DATA	11-15	
ENERGY CONSERVATION FOLLOW THESE RECOMMENDATIONS	16-17	
INSTRUMENTS AND CONTROLS	18-30	
Instrument Panel and Controls	18	
Right Console Controls	19	
Park Lever	20	
Hydraulic Seat	20	
Gauge and Tellite Cluster	21	
Turn Signal Indicator	21	
Engine Oil Pressure Gauge	21	
Coolant Temperature Gauge	21	
Fuel Gauge	21	
Voltmeter	22	
Tellites	22	
Transmission Oil Pressure Tellite	22	
Brake Wear Tellite	22	
Coolant Level Tellite	22	
Air Cleaner Service Tellite	22	
Control Center	23	
Blower Control	23	
Air Conditioner Control	23	
Heater Control	23	
Air Recirculation Control	23	
		BEFORE OPERATING YOUR TRACTOR 31
		OPERATING THE TRACTOR 31-39
		Neutral Starting Switch 31
		Starting the Engine 31
		Tractor Break-In Procedure With the Engine Running 33
		Stopping the Engine 34
		Steering the Tractor 34
		Driving the Tractor 35
		Hydraulic Powered Clutch Control 35
		Stopping the Tractor 35
		Selecting Ground Speed 35
		Park 37
		Hood Release 38
		Emergency Hood Release Lever 38
		Auxiliary Step 38
		Tool Box 38
		Frame Lock Pin 38
		Towing the Tractor 39
		ENGINE AND FUEL SYSTEM 40-43
		Warranty Notice 41
		Fuel System 41
		Fuel Injection Pump and Nozzles 43
		Priming the Turbocharger 43

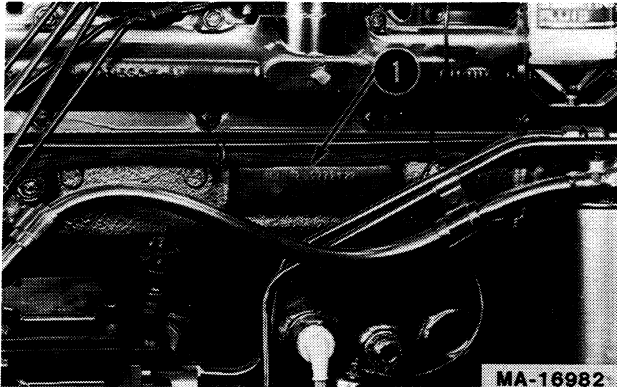
CONTENTS

COOLING SYSTEM	44-47	THREE-POINT HITCH	61-66
Coolants and Coolant System		Lift Links and Turnbuckles	61
Conditioners	44	Hitch Upper Link	62
Checking the Coolant Level	44	Telescoping Lower Links	62
Draining and Filling the		Lateral Limiter	63
Cooling System	45	Coupling the Equipment	64
Coolant System Filter		Hitch Category Chart	64
Conditioner	45	Uncoupling the Equipment	65
Hoses and Clamps	46		
Thermostat	46	OPERATING THE THREE-POINT	
Cleaning the Radiator,		HITCH WITH DRAFT CONTROL	66-67
Transmission Oil Cooler			
and Condenser Core Fins	46	HITCHING TRAILING	
Water Pump, Alternator-		EQUIPMENT	
Generator and Fan Belt		TO THE TRACTOR	67-70
Tension	47	Safety Chain	67
		Swinging Drawbar for Tractors	
AIR CLEANING SYSTEM	48-50	Without Three-Point Hitch	68
General Precautions	48	Swinging Drawbar for Tractors	
Removing and Cleaning the		With Three-Point Hitch	69
Primary Filter Element	48		
Inspection	49	AUXILIARY VALVES,	
Secondary Filter Element	49	REMOTE CYLINDERS	
		AND HYDRAULIC OUTLETS	71-78
ELECTRICAL SYSTEM	50-55	Flow Control Lever	71
Instrument Light Dimmer		Color Code	71
Switch	51	Motor Valve	74
Rocker Switches	51	Hydraulic Motor Operation	
Turn Signal Indicators	51	Using the Motor Valve	74
Charging System for		Connecting Hoses to the	
Alternator-Generator	51	Rear Hydraulic Outlets	75
Cranking System	51	Check Valves	77
Lighting System	51	Operating Double-Acting	
Lights	52	Cylinders	77
Combination Turn Signals		Operating Single-Acting	
and Warning Lights	52	Cylinders	77
Tellites	52	Neutral Lock	77
Fuse	53	Float Lockout	77
High Current Fuses	53	Adding Fluid After	
Batteries	54	Connecting Cylinders	
Electrical Connector	55	and Hoses	77
Implement Auxiliary Wire	56	Freeing the System of	
		Trapped Air	78
HYDRAULIC CONTROLS FOR		Simultaneous Raise	78
THREE POINT HITCH	57-60	POWER TAKE-OFF	79-81
Position Control	57	Operating the Independent	
Position Control Lock Lever	57	Power Take-Off	79
Adjustable Stop	58		
Draft Control	58		
Run Range	59		
Raise Rate Control	59		
Hitch Drop Rate Adjustment			
Attachment	60		

CONTENTS

DIFFERENTIAL LOCK	81	PREVENTIVE MAINTENANCE GUIDE	113-115
WHEELS	82-97	CONTROL CENTER EQUIPMENT	
Adjusting the Tread Widths	82	PREVENTIVE MAINTENANCE	116-119
Assembling the Double-Beaded Rims Onto the Wheels	82	Outside Air Filter	116
Reversing the Wheels	82	Recirculation Air Filter	116
Wheels with Double-Beaded Rims	83	Air Conditioner Condenser	117
Oscillation Stop Mounting	84	Air Conditioner System Pressures	117
Mean Tread Limits	84	Evaporator Drain Valves	114
Single Wheel Treads	85	Adjusting the Compressor Belt Tension	117
Inner Dual Wheel Treads	87	Compressor Pulley and Clutch	118
Outer Dual Wheel Treads	88	Compressor Shaft Seal	118
Maximum Front Wheel Tread	90	Compressor Oil Level	118
Articulation Angle	90	Heater Coolant Shut-Off	118
Wedge Wheels	91	Electrical	119
Double Wedge Wheels	95	Miscellaneous	119
Dual Wheels	96		
TIRES	98-99	SPECIFICATIONS	120-127
Inflation	98	FRONT CHEMICAL TANKS	128
Front and Rear Tire Inflation Pressure	98	OPTIONAL EQUIPMENT	129
BALLASTING THE TRACTOR	100-101	METRIC (SI) MEASUREMENTS	Inside Back Cover
Liquid Weight of Tractor Tires	101		
COLD WEATHER PRECAUTIONS	101		
Fuel System	101		
Electrical	101		
Lubrication	101		
Cooling System	101		
STORING THE TRACTOR	102-103		
Storage	102		
Removing From Storage	102		
LUBRICATION	104-106		
Engine Oil	104		
Gear Lubricant	104		
Hydraulic Fluid Filters	105		
Lubrication Fitting Grease	106		
Engine Oil Filter	106		
Miscellaneous Lubrication	106		
LUBRICATION TABLE	107		
LUBRICATION GUIDE	108-112		

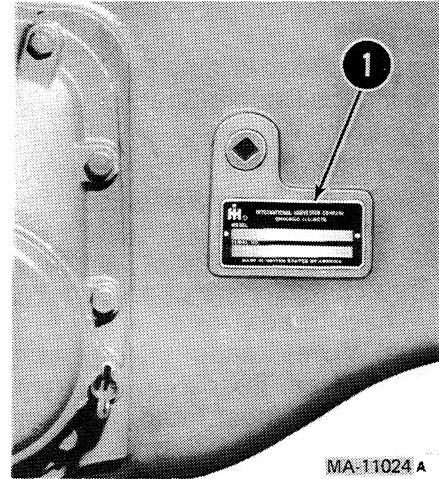
SERIAL NUMBER



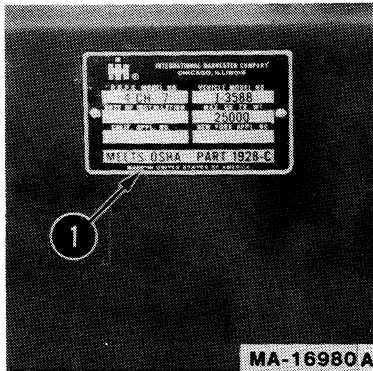
1 - Engine (Left side of crankcase)

6388 Tractor DT-436B

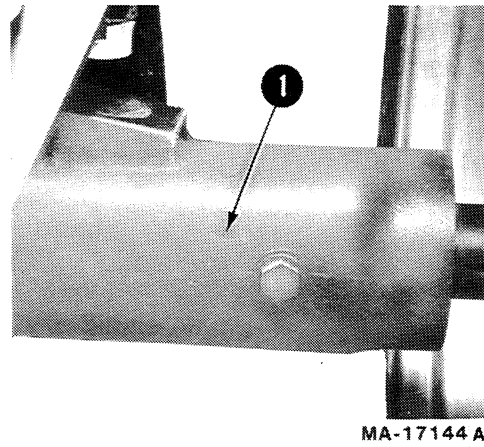
6588 and 6788 Tractor DT-466B



1 - Chassis (Right side of rear frame)



1 - Control Center or ROPS (Right side)



1 - Front Axle (Left front side of front axle)

Data center (Back of data center)

WORK SAFELY — FOLLOW THESE RULES



Instructions given with this symbol are for personal safety. Be sure you and your workers follow them.

A CAREFUL OPERATOR IS THE BEST INSURANCE AGAINST AN ACCIDENT



Before handling ANY equipment, READ the OPERATORS MANUAL.

MA-16875

SERVICING AND BEFORE STARTING

Make sure that everyone is clear of machinery before starting the engine or operation.

Carefully supervise inexperienced operators.

Misuse or modification of this machine can cause:

- mechanical breakdown,
- property damage,
- injury or death.

Always use proper safety precautions. Tell your workers how to work safely.

Shut off the engine before working on equipment.

Never enter the hinge or pivot area of the tractor without using the frame lock pin.

When fueling a tractor, keep any type of open flame away. Do not smoke. Stop the engine and wait for it to cool before removing the fuel cap or refueling.

Check coolant and lubricant levels, including the engine, front axle, transfer case, and rear frame.

The coolant level should be checked at the coolant recovery reservoir.



Turn the radiator cap slowly counterclockwise to the pressure release point to allow the pressure or any steam to escape; then press down on the cap and continue to turn until the cap is free to be removed.

Check brakes and clutch pedal for correct operation.

Reduce tipping hazards by spreading wheels as far as your work program permits.

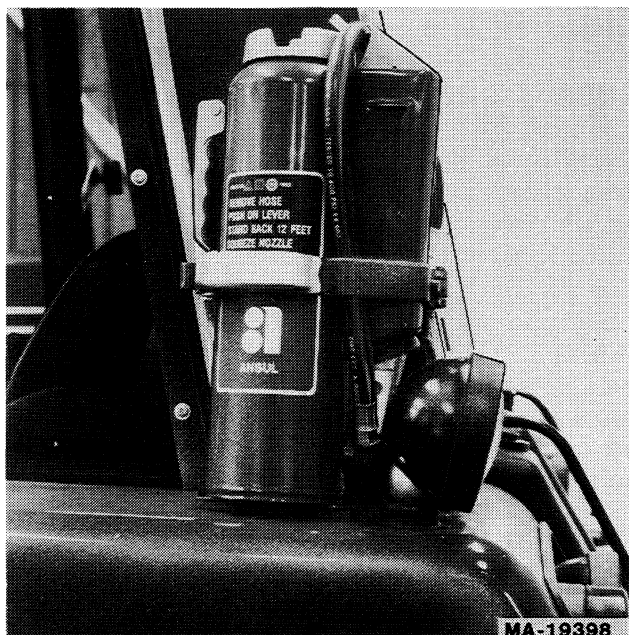
Be sure muffler and exhaust pipe are in place so exhaust gases are discharged above the operator.

Use only metric tools on metric fasteners. Refer to the "Inch-Metric Hardware" section.

Always keep the operator's compartment clean. Keep dirt, trash, and grease from the pedals, steps, mounting handles, steering wheel, and controls.

Always carry a "Charged" fire extinguisher and a first aid kit.

WORK SAFELY — FOLLOW THESE RULES



Fire extinguisher mounting.

Avoid loose-fitting clothing, which would catch on moving parts.

Mounting assist handles and steps are provided for your safety. Use them when getting on or off the tractor.

STARTING

Always sit in the tractor seat to start the engine. Never try to do it from the ground. Know the controls and what they do. Place the range transmission lever in the "N" (neutral) position, engage the park lock lever and place all other controls in neutral before starting the engine.

Make sure the area is well ventilated.

DURING OPERATION

NO RIDERS!

Only the operator should ride on the tractor. He should sit on the seat with the seat belt fastened.

Carefully supervise inexperienced operators.

Hydraulic fluid escaping under pressure can have enough force to penetrate the skin. Hydraulic fluid may also infect a minor cut or opening in the skin. **If injured by escaping fluid, see a doctor at once.** Serious infection or reaction can result if medical treatment is not given immediately. Make sure all connections are tight and that hoses and lines are in good condition before applying pressure to the system. Relieve all pressure before disconnecting the lines or performing other work on the hydraulic system. To find a leak under pressure use a small piece of cardboard or wood. Never use hands.

Shut off the engine and wait for all movement to stop before servicing or unplugging power driven equipment.

Make certain that every one is clear of machinery before starting the engine or operating.

Keep all shields in place.

Use the drawbar when hitching to a heavy trailing load.

Pull only from the drawbar or hitch. Never hitch to rear axle housing or front axle.

Always avoid sudden starts, excessive speed, and sudden stops.

When possible, avoid operating the tractor near ditches, embankments and holes. Stay off slopes too steep for safe operation. Watch where you are going, especially at row ends, on roads, and around trees.

Buy Now



Our support email:

ebooklibonline@outlook.com