

**3088,3288,3488,3688
Hydro Tractors**

Operators Manual

1258513C5

Reprinted

CASE III



*This symbol means **ATTENTION! BECOME ALERT! YOUR SAFETY IS INVOLVED.** The message that follows the symbol contains important information about your safety. Carefully read the message. Make sure you fully understand the causes of possible injury or death.*

SB001

IF THIS MACHINE IS USED BY AN EMPLOYEE, IS LOANED, OR IS RENTED, MAKE SURE THAT THE OPERATOR UNDERSTANDS THE TWO INSTRUCTIONS BELOW.

BEFORE THE OPERATOR STARTS THE ENGINE:

1. GIVE INSTRUCTIONS TO THE OPERATOR ON SAFE AND CORRECT USE OF THE MACHINE.
2. MAKE SURE THE OPERATOR READS AND UNDERSTANDS THE OPERATOR'S MANUAL FOR THIS MACHINE.



IMPROPER OPERATION OF THIS MACHINE CAN CAUSE INJURY OR DEATH.

BEFORE STARTING THE ENGINE, DO THE FOLLOWING:

1. READ THE OPERATOR'S MANUAL.
2. READ ALL SAFETY DECALS ON THE MACHINE.
3. CLEAR THE AREA OF OTHER PERSONS.

LEARN AND PRACTICE SAFE USE OF MACHINE CONTROLS IN A SAFE, CLEAR AREA BEFORE YOU OPERATE THIS MACHINE ON A JOB SITE.

It is your responsibility to observe pertinent laws and regulations and to follow manufacturer's instructions on machine operation and maintenance.

See your Authorized Case dealer for additional operator's manuals, parts catalogs, and service manuals.

TO THE OWNER

Be sure this operators manual is kept with the machine at all times, regardless of ownership.

Before you operate the tractor study this manual carefully. It has been prepared to help you operate and maintain your tractor with utmost efficiency.



This symbol is used to call your attention to instructions concerning your personal safety. Be sure to observe and follow these instructions.

Assembled in this manual are operation, lubrication and maintenance instructions for the International 3088, 3288, 3488-HYDRO and 3688 tractors. This material has been prepared in detail in the hope that it will help you to better understand the correct care and efficient operation of your new tractor.

For prompt, efficient service, always specify the tractor model and serial numbers, including prefix and suffix letters. Write these serial numbers in the spaces provided under "Serial Numbers".

Your new International Harvester tractor is designed to meet today's exacting operating requirements. The ease and comfort of operation, the ability to match ground speeds to engine power and work requirement, and the effortless versatility of the hydraulic system are intended to lighten your work and shorten your hours on the job.

Your local International Harvester dealer is interested in the performance you receive from these tractors. He has factory-trained servicemen, informed in the latest method of servicing tractors, modern tools, and original-equipment IH service parts which assure proper fit and good performance.

To obtain top performance and assure economical operation the tractor should be inspected, depending on its use, periodically, or at least once a year by your International Harvester Dealer.



Universal symbols are used to pictorially identify various tractor instruments and controls. Throughout this manual, an identifying symbol is placed by the instructions like this example for engine coolant temperature. The waves signify water or coolant and the thermometer indicates temperature. Regardless of the language used in a nation, and without translation, this symbol means water or coolant temperature.

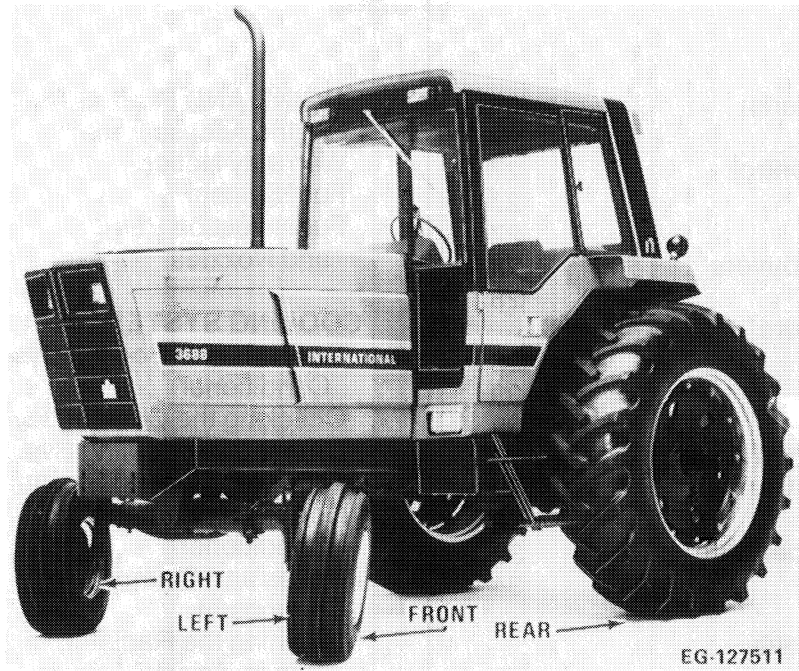
Optional equipment and accessories are available. Disregard the instructions for equipment not on your tractor.

METRIC (SI) MEASUREMENTS

A standard of metric measurement known as International System of Units (SI) has been adopted for worldwide use. English Units and Metric Units are used throughout this manual. (Equivalentents are given in parenthesis.)



CAUTION: Some photographs in this manual may show shields or cover panels removed for purposes of clarity. **NEVER OPERATE** Unit without all shields and cover panels in place.



3688 with optional equipment

CONTENTS

TO THE OWNER	Inside Front Cover	INSTRUMENTS AND CONTROLS	18-35
SERIAL NUMBERS	5	Tractors Equipped with Speedometer-Tachometer	18
WORK SAFELY—FOLLOW THESE RULES	6-10	Tractors Equipped with Data Center	19
Servicing and Before Starting	6	Seats	21
Starting	7	Power Take Off, Hitch, Hydraulic Valves and Transmission Controls	22
During Operation	7	Transmission Controls	23
Transporting	7	Park Lock Control	23
Tractors with Control Centers	8	Gauge and Tellite Cluster	24
Tractors without ROPS	8	Turn Signal Indicator	24
Before Dismounting	8	Engine Oil Pressure Gauge	24
Dismounting	8	Coolant Temperature Gauge	24
After an Upset	8	Fuel Gauge	24
Product Graphics	9	Voltmeter	25
INCH-METRIC HARDWARE	11	Tellites	25
HARDWARE TORQUE DATA	12-16	Brake Wear Tellite	25
ENERGY CONSERVATION—FOLLOW THESE RECOMMENDATIONS	17	Air Cleaner Service Tellite	25
		Transmission Oil Pressure Tellite (Gear Drive)	25
		Transmission Oil Pressure Tellite (Hydrostatic Drive)	25
		Transmission Oil Temperature Tellite (Hydrostatic Drive)	25
		Speedometer-Tachometer	26

CONTENTS

Control Center Interior	27	ENGINE AND FUEL SYSTEM	46-51
Blower Control	27	Engine Access Panels	48
Air Conditioner Control	27	Warranty Notice	49
Heater Control	27	Fuel System	49
Air Recirculation	27	Fuel Injection Pump and Nozzles	51
Air Flow Control Louvers	28	COOLING SYSTEM	52-55
Defroster	28	Coolants and Cooling System Conditioner	52
Refrigerant Pressure Indicator Light	28	Checking the Coolant Level	52
Dome Light	29	Draining the Cooling System	54
Radio	29	Filling the Cooling System	54
Cigarette Lighter and Ashtray	29	Coolant System Filter Conditioner	54
Windshield Wiper Control	30	Hoses and Clamps	55
Data Center	30	Thermostat	55
Exhaust Gas Temperature	33	Cleaning the Radiator, Transmission Oil Cooler and Condenser Core Fins	55
Seat Adjustments	34	Water Pump, Alternator- Generator and Fan Belt Tension	55
BEFORE OPERATING YOUR TRACTOR	36	AIR CLEANING SYSTEM	56-59
OPERATING THE TRACTOR	36-45	Aspirated Air Cleaner	56
Neutral Starting Switches	36	Automatic Dust Unloader	56
Starting the Engine	36	General Precautions	56
Break-In Procedure	38	Removing and Cleaning the Primary Element	57
With the Engine Running	38	Inspection	58
Stopping the Engine	39	Removing the Secondary Element	58
Steering the Tractor	39	ELECTRICAL SYSTEM	60-65
Driving the Tractor (Gear Drive)	39	Fuses	60
Hydraulic Powered		Instrument Light Dimmer Switch	61
Clutch Control	40	Turn Signal Indicators	61
Selecting Ground Speeds (Gear Drive)	40	Charging System for Alternator-Generator	61
Stopping the Tractor (Gear Drive)	41	Cranking System	62
Park	42	Lighting System	62
Driving the Tractor (Hydrostatic Drive)	42	Lights	62
Foot-n-inch Pedal (Hydrostatic Drive)	42	Combination Turn Signals and Warning Lights	62
Selecting Ground Speeds (Hydrostatic Drive)	43	Tellites	63
Stopping the Tractor (Hydrostatic Drive)	44	Batteries	63
Park	44	Electrical Connector	65
Starting Procedure for Hydrostatic Drive Tractors After Transporting on Truck or Flatcar	44	Implement Auxiliary Wire	65
Towing the Tractor	45		

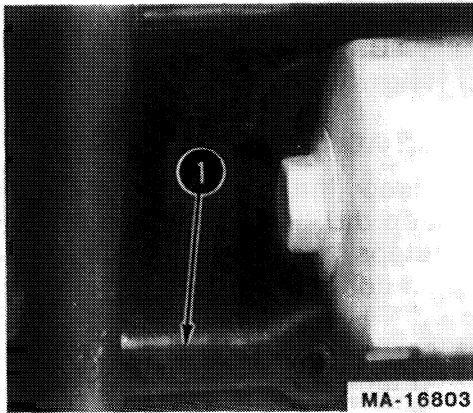
CONTENTS

HYDRAULIC CONTROLS FOR THREE POINT HITCH OPEN CENTER HYDRAULIC SYSTEM	66-68	AUXILIARY VALVES, REMOTE CYLINDERS AND HYDRAULIC OUTLETS — OPEN CENTER HYDRAULIC SYSTEM	91-97
Position Control	66	Color Code	91
Position Control Lock Lever	66	Connecting Hoses to the Rear Hydraulic Outlets	94
Adjustable Stop	67	Check Valves	96
Draft Control	67	Operating Double-Acting Cylinders	96
Run Range	68	Operating Single-Acting Cylinders	96
HYDRAULIC CONTROLS FOR THREE POINT HITCH POWER PRIORITY HYDRAULIC SYSTEM	69-72	Neutral Lock	96
Position Control	69	Float Lockout	96
Position Control Lock Lever	69	Adding Fluid After Connecting Cylinders and Hoses	97
Adjustable Stop	70	Freeing the System of Trapped Air	97
Draft Control	70	Simultaneous Raise	97
Run Range	71	Sequential Raise	97
Raise Rate Control	71	Valve Detents and Unlatching Continuous or Long Term Hydraulic Application	97
Hitch Drop Rate Adjustment	72		
THREE-POINT HITCH	73-84	AUXILIARY VALVES, REMOTE CYLINDERS AND HYDRAULIC OUTLETS— POWER PRIORITY HYDRAULIC SYSTEM	98-105
Hitch Upper Link	75	Flow Control Lever	98
Telescoping Lower Links	75	Color Code	98
Claw Lower Links	76	Motor Valve	101
Lift Links and Turnbuckles	76	Hydraulic Motor Using the Motor Valve	101
Lateral Limiter	77	Connecting Hoses to the Rear Hydraulic Outlets	101
Cam Sway Limiter	79	Check Valves	104
Coupling the Equipment	80	Operating Double-Acting Cylinders	104
Uncoupling the Equipment	84	Operating Single-Acting Cylinders	104
OPERATING THE THREE- POINT HITCH WITH DRAFT CONTROL	85	Neutral Lock	104
		Float Lockout	104
HITCHING TRAILING EQUIPMENT TO THE TRACTOR	86-90	Adding Fluid After Connecting Cylinders and Hoses	104
Safety Chain	86	Freeing the System of Trapped Air	105
Swinging Drawbar for Tractors with Three-Point Hitch	87	Simultaneous Raise	105
Swinging Drawbar for Tractors without Three-Point Hitch	90	Valve Detents and Unlatching Continuous or Long Term Hydraulic Application	105

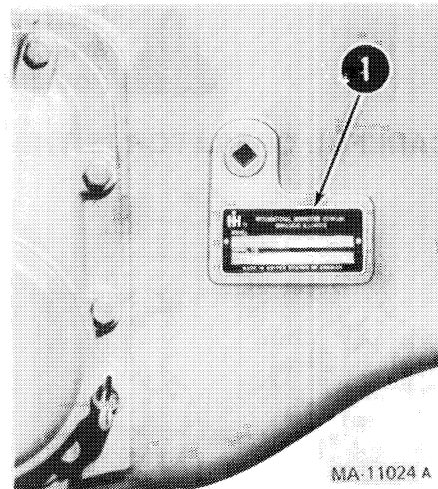
CONTENTS

POWER TAKE-OFF	106-108	LUBRICATION	135-138
Operating the Independent Power Take-Off	107	Engine Oil	135
DIFFERENTIAL LOCK	108	Gear Lubricant	135
FRONT WHEELS	109-111	Lubrication Fitting Grease	136
Adjustable Wide Tread Front Axle	109	Engine Oil Filter	136
Farmall Hi-Clear, Adjustable Front Axle	109	Hydraulic Fluid Filters	136
Adjusting the Front Axle for Tread Width	109	Lubricating the Front Wheels	138
Adjusting the Toe-In	111	Miscellaneous Lubrication	138
ALL-WHEEL DRIVE	112-115	LUBRICATION TABLE	139-140
Adjusting Tread Width	113	LUBRICATION GUIDE	141-147
Adjusting Toe-In	115	PREVENTIVE MAINTENANCE GUIDE	148-151
REAR WHEELS	116-123	CONTROL CENTER EQUIPMENT	
Adjusting the Tread Widths	116	PREVENTIVE MAINTENANCE	152-156
Reversing the Rear Wheels	116	Outside Air Filter	152
Tractors with Hub Clamp Wheels	116	Recirculation Air Filter	152
Assembling the Rear Wheel: with Double Beaded Rims	116	Air Conditioner Condenser	153
Wheels with Double Beaded Rims	117	Air Conditioner System Pressures	153
Tractors with Wedge Wheels	118	Evaporator Drain Valves	153
Dual Rear Wheels	121	Adjusting the Compressor Belt Tension-3088 and 3288	
TIRES	124-127	Tractors with Reciprocating Piston Compressors	153
Inflation	124	Adjusting the Compressor Belt Tension-3088 and 3288	
Front Tire Inflation Pressures	125	Tractors with Rotary Vane Compressors	154
Rear Tire Inflation Pressures	126	Adjusting the Compressor Belt Tension-3488 Hydro & 3688	
BALLASTING THE TRACTOR	128-133	Tractors with Reciprocating Piston or Rotary Vane Compressors	154
Front Ballasting	130	Compressor Pulley and Clutch-Reciprocating Piston Compressor	155
Additional-All-Wheel Drive	130	Compressor Pulley and Clutch-Rotary Vane Compressors-	155
Liquid Ballast	131	Compressor Shaft Seal	155
Weight Table	131	Compressor Oil Level	156
Front-end Weight Hold Down and Locking Device	132	Heater Coolant Shut-Off	156
Rear Wheel Weights	133	Electrical	156
COLD WEATHER PRECAUTIONS	133	Floodlights	156
Fuel System	133	Miscellaneous	156
Electrical System	133	SPECIFICATIONS	157-166
Lubrication	133	FRONT CHEMICAL TANKS	167
Cooling System	133	OPTIONAL EQUIPMENT	168
STORING THE TRACTOR	134		
Storage	134		
Removing From Storage	134		

SERIAL NUMBERS

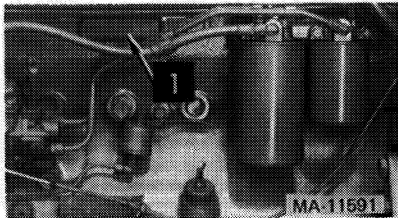


**Engine (Right side)
3088 and 3288 Tractors**



Right side of rear frame

1 - Tractor serial number



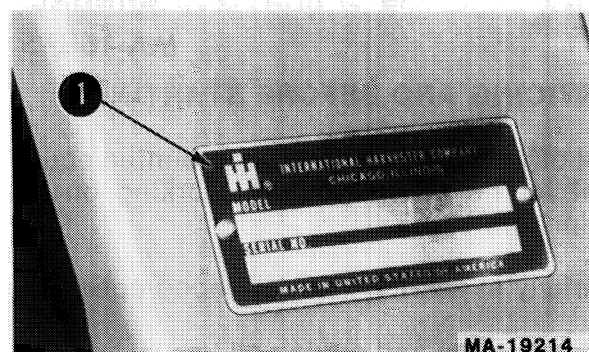
**Engine (Left side)
3488-HYDRO and 3688 Tractors**

1-Engine serial numbers

**3088 and 3288 Tractors
with D-358 engine**

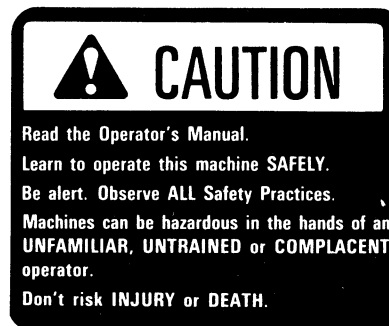
**3488-Hydro Tractor
with D-466 engine**

**3688 and 3688 Hi-Clear Tractors
with D-436 engine**



Right side of control center or ROPS

**1 - Control center or ROPS model and serial
number**



Buy Now



Our support email:

ebooklibonline@outlook.com