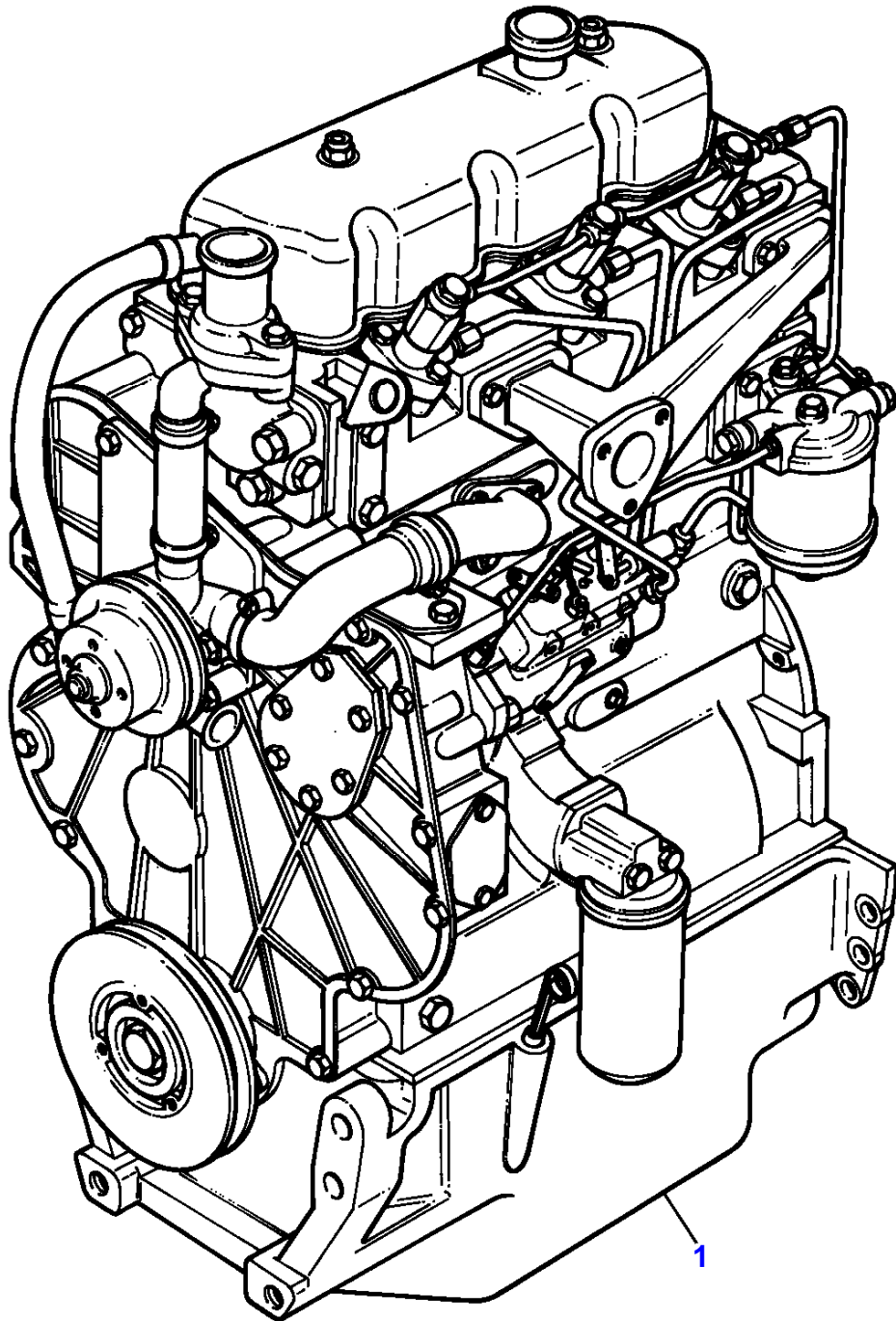


Page Title	Page Number
ENGINE - AD3.152 ENGINE	1
CYLINDER BLOCK - AD3.152 ENGINE	2
CRANKSHAFT, PISTONS AND CONNECTING RODS - AD3.152 ENGINE	3
CYLINDER HEAD - AD3.152 ENGINE	4
ROCKER SHAFT - AD3.152 ENGINE	5
TIMING GEAR AND CAMSHAFT - AD3.152 ENGINE	6
FUEL INJECTION EQUIPMENT (DIESEL) - AD3.152 ENGINE	7
LUBRICATING OIL SUMP - AD3.152 ENGINE	8
LUBRICATING OIL FILTER AND INTEGRAL COOLER - AD3.152 ENGINE	9
WATER PUMP, THERMOSTAT AND HEAT EXCHANGER - AD3.152 ENGINE	10
LOW PRESSURE FUEL SYSTEM - AD3.152 ENGINE	11
AIR INDUCTION AND EXHAUST SYSTEM - AD3.152 ENGINE	12
ALTERNATOR POSITIONER - AD3.152 ENGINE	13
JOINTS AND GASKETS - AD3.152 ENGINE	14
ALTERNATOR - VALEO TYPE	15
ALTERNATOR-LUCAS	16
STARTER MOTOR	17
COOLING SYSTEM-ENGINE - FAN AND HOSES	18
COOLING SYSTEM - RADIATOR AND BRACKET	19
FUEL SYSTEM-FUEL FILTER	20
FUEL SYSTEM-FUEL FILTER	21
FUEL SYSTEM-FUEL TANK AND ATTACHMENTS	22
AIR FILTER-OIL BATH AIR FILTER	23
EXHAUST SYSTEM-VERTICAL	24
EXHAUST SYSTEM-VERTICAL	25
THROTTLE CONTROLS	26
ELECTRICAL WIRING	27
BATTERY	28
INSTRUMENT PANEL AND INSTRUMENTS	29
SINGLE CLUTCH - P.&V. - 10	30
SINGLE CLUTCH - B.&B. - 10	31
CLUTCH-DUAL CLUTCH - LUK - 11	32
CLUTCH-DUAL CLUTCH - O.M.G. - 11	33
CLUTCH CONTROL	34
CLUTCH CONTROL	35
CLUTCH CONTROL - CLUTCH SHAFT BRAKING SISTEM	36
CENTRE AXLE HOUSING AND TRANSMISSION HOUSING	37
TRANSMISSION-GEAR TRAIN	38
TRANSMISSION-GEAR TRAIN	39
SHIFT LEVERS-12 SPEED TRANSMISSION	40
PTO SHAFT - STANDARD	41
PTO SHAFT - 540/750/1000 R.P.M.	42
REAR AXLE-HOUSING - FINAL DRIVE	43
BRAKE AND CONTROLS	44
BRAKES-HANDBRAKE	45
STEERING CLUTCH	46
TRACK ADJUSTER	47
TRACK CHAIN - TRACK CHAIN	48
SUSPENSION - FRONT - REAR	49
SUSPENSION - TRACK CARRIER	50
UPPER ROLLER - UPPER TRACK ROLLER	51
LOWER ROLLER	52
HYDRAULIC LIFT PIPINGS	53
HYDRAULIC PUMP - HYDRAULIC LIFT	54
HYDRAULIC LIFT VALVE	55
HYDRAULIC LIFT-LIFT ARMS	56
REAR CONTROLS-DRAFT AND POSITION	57
REAR CONTROLS-DRAFT AND POSITION	58
AUXILIARY HYDRAULIC VALVE LINES	59
AUXILIARY HYDRAULICS VALVE - STANDARD	60
AUXILIARY HYDRAULICS VALVE - FLOATING	61
HYDRAULICS EQUIPMENT-VALVE	62
LIFT HITCH - WITH THREE POINT LINKAGE CAT I	63
HOOD AND GRILLE	64
SHEET METAL-PANELS - BRACKETS AND ASSEMBLING PARTS	65
DECALS	66

TABLE OF CONTENT		00
FENDERS AND PLATFORM	67	
GUARDS - TRACK ROLLERS GUARDS	68	
SAFETY FRAME	69	
SEAT-SABLE - STANDARD	70	
SEAT-SABLE - LUX TYPE	71	
LIGHTING EQUIPMENT	72	
WEIGHT FRAME AND WEIGHTS - FRONT HOOK	73	
REAR HOOK-ADJUSTABLE - FOR ITALY	74	
DRAWBAR	75	
TOOL KIT	76	

C-0011-22M-A



MASSEY FERGUSON

MF 234 CF CRAWLER - 3310807

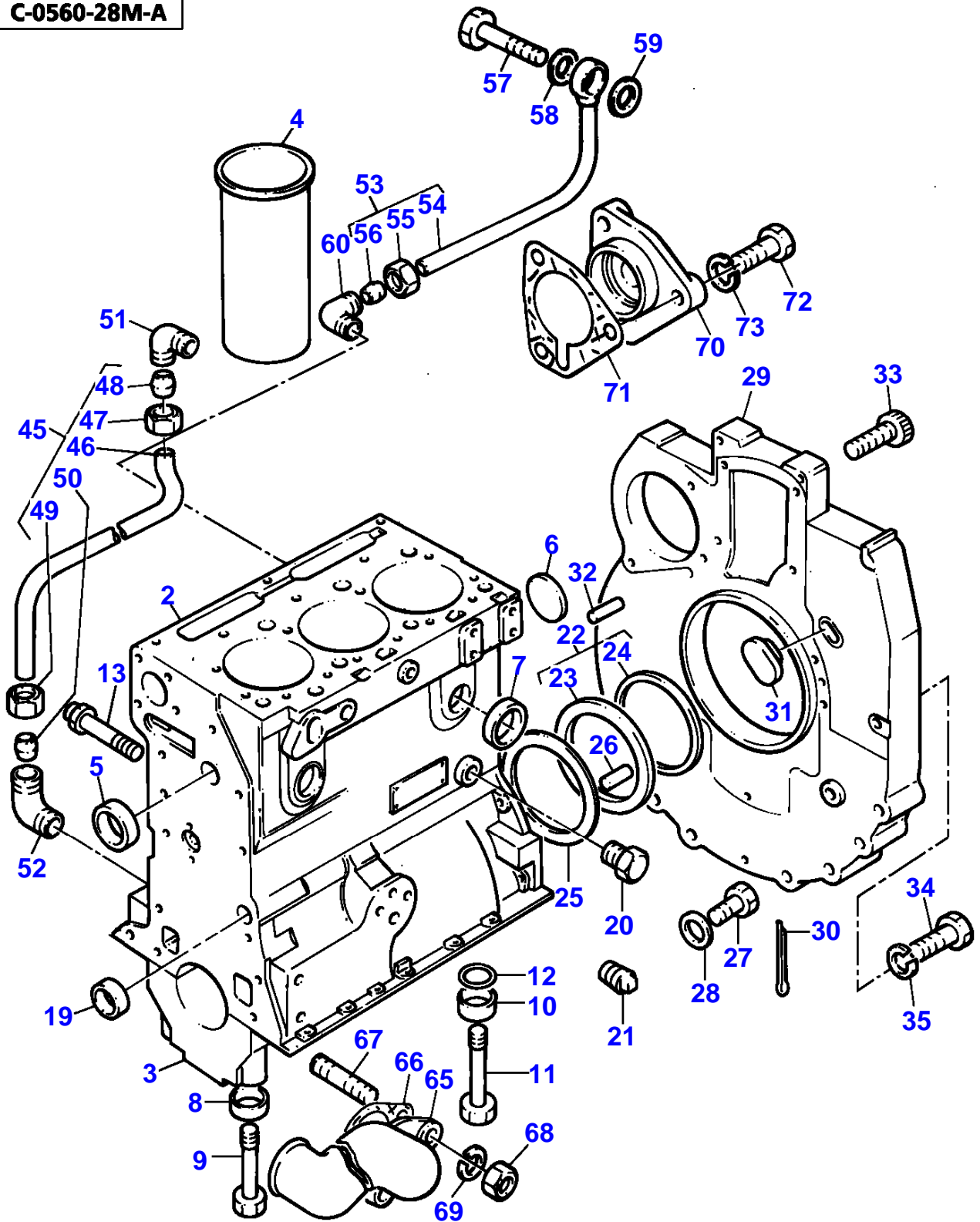
3310807

ENGINE - AD3.152 ENGINE

1

Item	Part Number	Qty	Description	Comments
				AD3.152 ENGINE
1	CE31169	X	Parts Book	

C-0560-28M-A



Item	Part Number	Qty	Description	Comments
				AD3.152 ENGINE
1	ZZ 50170	1	Kit,Cyl.Block	
2		1	Cylinder Block	(1) Not serviced, order REF.1
3		4	Bearing Cap	(1) Not serviced, order REF.1
4	31358323	3	Liner	(1) (A)
4	31358345	X	Liner	(1) (B)
4	31358384	X	Liner	Thickness (+)0.010" Thickness (+)0.25MM
4	31358357	X	Liner	Thickness (+)0.030" Thickness (+)0.76MM
5	0650710	1	Plug	(1)
6	0650692	1	Plug	(1)
7	0650710	4	Plug	(1)
8	33137408	6	Thimble	(1)
9	32181441	6	Screw	(1)
10	33137408	2	Thimble	(1)
11	32181442	2	Screw	(1)
12	2415608	2	O Ring	(1)
13	2485A204	1	Plug	(1)
19	0650566	2	Plug	
20	32161114	1	Plug	
21	0650594	1	Plug	
22	4142V002	1	Housing	
23		1	Housing	(22) Not serviced, order REF.22
24	2418F475	1	Seal	(22)
25	33826111	1	Joint	
26	0350015	2	Dowel	
27	0746255	9	Setscrew	
28	0920003	9	Washer	
29	37147975	1	Plate	
30	0610045	1	Pin	
31	37813113	1	Plug	
32	0350016	2	Dowel	
33	0720798	2	Screw	
34	0746454	6	Setscrew	
35	0920054	6	Washer	
45	35352404	1	Pipe,Oil	
46		1	Pipe	(45) Not serviced, order REF.45
47	0576111	1	Nut	(45)
48	0566002	1	Olive	(45)
49	0576111	1	Nut	(45)
50	0566002	1	Olive	(45)
51	0201047	1	Connection	
52	0201047	1	Connection	
53	35568109	1	Pipe,Oil	
54		1	Pipe	(53) Not serviced, order REF.53
55	0576111	1	Nut	(53)
56	0566002	1	Olive	(53)
57	0095350	1	Bolt	
58	0920106	1	Washer	
59	0920106	1	Washer	
60	0201047	1	Connection	
65		1	Connection	See Page - Reference Number 10/33
66		1	Joint	See Page - Reference Number 10/34
67		2	Stud	See Page - Reference Number 10/35
68		2	Nut	See Page - Reference Number 10/36
69		2	Washer	See Page - Reference Number 10/37
70	37146753	1	Plate	
71	36862511	1	Joint	
72	0826201	3	Stud	
73	0920053	3	Washer	

MASSEY FERGUSON

MF 234 CF CRAWLER - 3310807

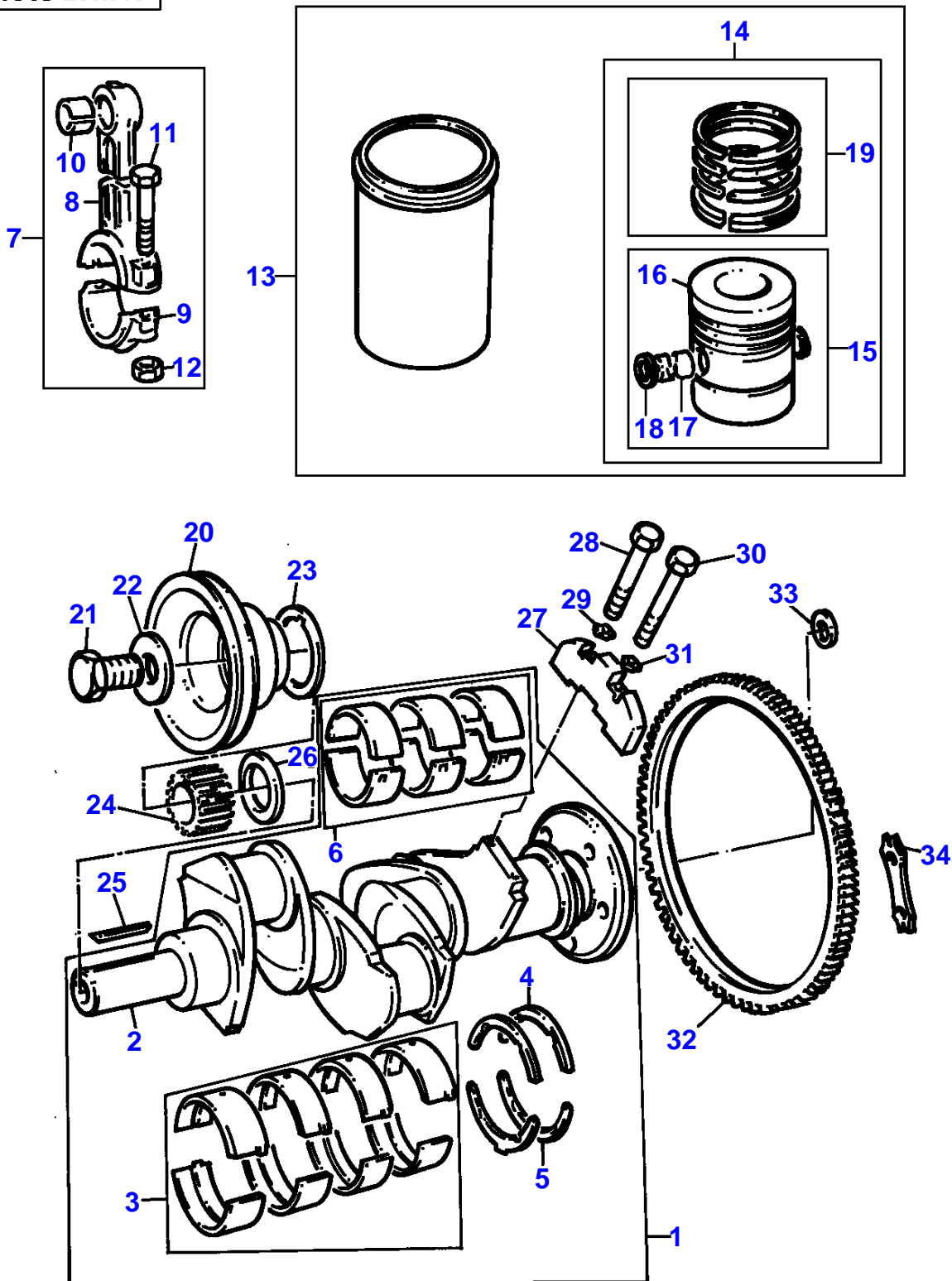
3310807

CYLINDER BLOCK - AD3.152 ENGINE

2

Item	Part Number	Qty	Description	Comments
				(A) PRESS FIT
				(B) SLIP FIT

C-0563-27M-A





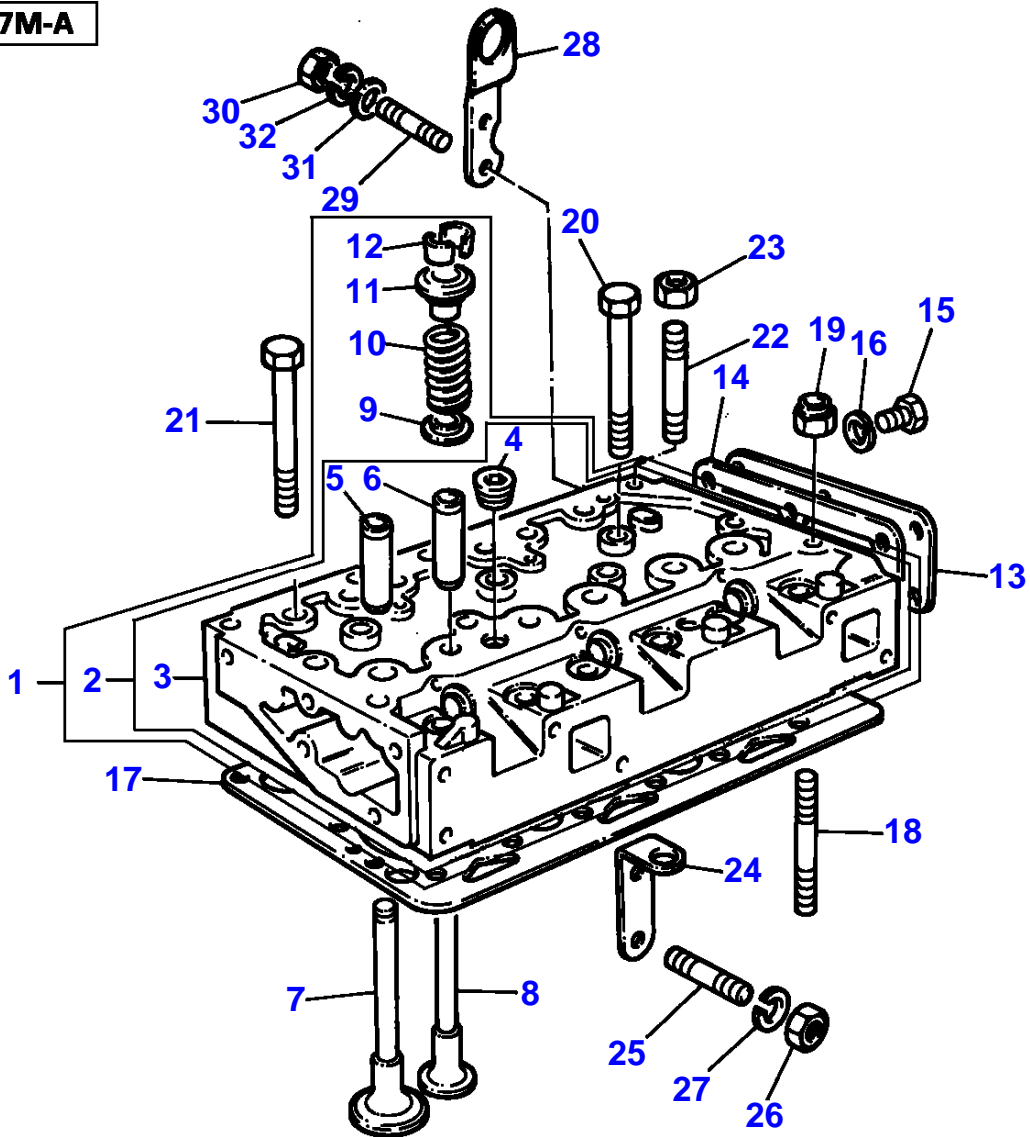
CRANKSHAFT, PISTONS AND CONNECTING RODS - AD3.152 ENGINE

Item	Part Number	Qty	Description	Comments
				AD3.152 ENGINE
1	ZZ 90078	1	Kit, Crankshaft	Repairs and replaces ZZ90122
2		1	Crankshaft	(1) Not serviced, order REF.1
3	68084	1	Kit, Bearing	(1) (A)
3	68084A	X	Kit, Bearing	(A) Thickness (-)0.25MM Thickness (-)0.010"
3	68084B	X	Kit, Bearing	(A) Thickness (-)0.50MM Thickness (-)0.020"
3	68084C	X	Kit, Bearing	(A) Thickness (-)0.75MM Thickness (-)0.030"
4	31137211	2	Thrust Washer	(1)
	31137212	X	Washer	Thickness (+)0.19MM Thickness (+)0.0075"
5	31137221	2	Thrust Washer	(1)
	31137222	X	Washer	Thickness (+)0.19MM Thickness (+)0.0075"
6	85036	1	Kit, Bearing	(1) (A)
6	85036A	X	Kit, Bearing	(A) Thickness (-)0.25MM Thickness (-)0.010"
6	85036B	X	Kit, Bearing	(A) Thickness (-)0.50MM Thickness (-)0.020"
6	85036C	X	Kit, Bearing	(A) Thickness (-)0.75MM Thickness (-)0.030"
7	ZZ 90010	1	Kit, Conrod	
8		1	Conrod	(7) Not serviced, order REF.7
9		1	Cap	(7) Not serviced, order REF.7
10	31134151	1	Bush	(7)
11	0095250	2	Bolt	(7)
12	33221327	2	Nut	(7)
13	U5MK0034	X	Kit, Cylinder	(B)
	U5MK0035	X	Kit, Cylinder	(C)
14	68504	X	Kit, Piston	(13)
15	68331	1	Kit, Piston	(D)
	68332	1	Kit, Piston	(14) (E)
16		X	Piston	(15) Not serviced, order REF.15
17		X	Pin	(15) Not serviced, order REF.15
18	0170001	2	Circlip	(15)
19	41158057	3	Kit, Piston Ring	(14)
20	31147788	1	Pulley,Crank	
21	32162312	1	Screw	
22	33125112	1	Washer	
23	33176137	1	Washer	
24	0410132	1	Gear,Crankshaft	Number of teeth/spines 25T
25	36271704	1	Woodruff Key	
26	0330811	1	Spacer	
27	31328242	2	Weight	(F)
28	2185189	2	Screw	
29	31731515	2	Washer	Right Hand
30	2185189	2	Screw	
31	31731516	2	Washer	Left Hand
32	0410236	1	Starter Ring	
33	33117127	6	Washer	Repairs and replaces 33117121
34	0921062	3	Tab Washer	

(A)

Item	Part Number	Qty	Description	Comments
				PRE-FINISHED
				(B) SLIP FIT
				(C) PRESS FIT
				(D) UNTOPPED
				(E) PRE-TOPPED
				(F) REPLACES 31328241 IN ENGINE SETS ONLY(QTY 2).

C-0566-27M-A

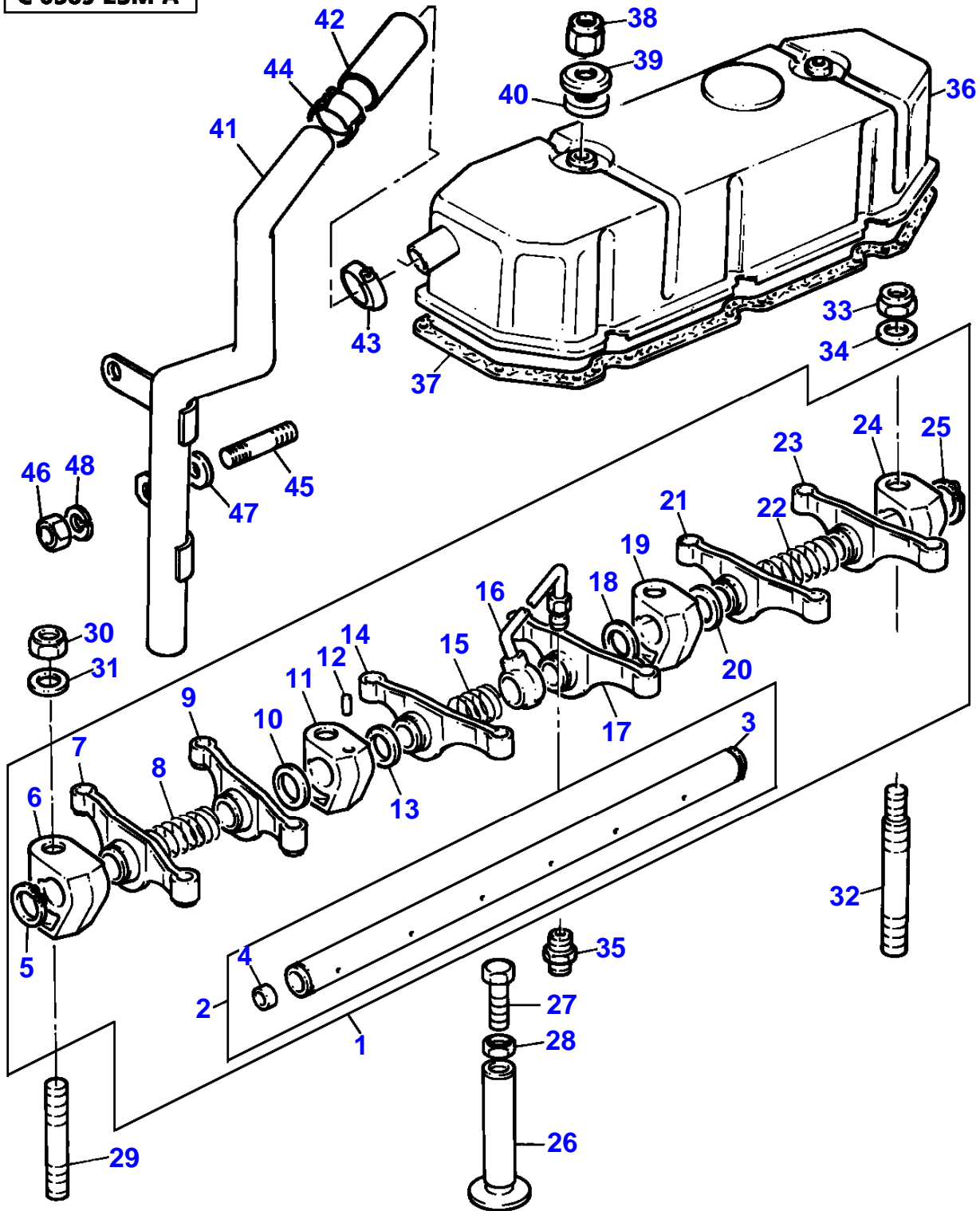


CYLINDER HEAD - AD3.152 ENGINE

Item	Part Number	Qty	Description	Comments
				AD3.152 ENGINE
1	ZZ 80082	1	Kit, Cyl. Head	
2	ZZ 80017	X	Kit, Cyl. Head	(1)
3		1	Cylinder Head	(2) Not serviced, order REF.2
4	2431154	1	Plug	(2)
5	33261723	3	Guide	(2)
6	33261723	3	Guide	(2)
7	31431681	3	Valve Inlet	(1)
8	3142A081	3	Valve Exhaust	(1) Repairs and replaces 31431031
9	33415133	6	Washer	(1)
10	0780006	6	Spring	(1)
11	33423148	6	Cap	(1)
12	0230001	12	Cotter	(1) (A)
13	3612M002	1	Plate	
14	0490485	1	Joint	
15	0746254	6	Setscrew	
16	0920053	6	Washer	
17	3681E015	1	Gasket	Repairs and replaces 3681E006
18	32524132	2	Stud	
19	33221329	2	Nut	
20	32181457	4	Screw	
21	32181458	9	Screw	
22	32524148	3	Stud	
23	33221329	3	Nut	
24	36531408	1	Plate	
25	0826462	2	Stud	
26	0576051	2	Nut	
27	0920054	2	Washer	
28	36456321	1	Plate	
29	2216194	2	Stud	
30	0576051	2	Nut	
31	0920004	2	Washer	
32	0920054	2	Washer	

(A)  
SERVICED IN PAIRS

C-0569-23M-A



Item	Part Number	Qty	Description	Comments
				AD3.152 ENGINE
1	4115R805	1	Rocker Shaft Ass	
2	ZZ 90047	1	Rocker Shaft	(1)
3		1	Shaft	(2) Not serviced, order REF.2
4	0650507	2	Plug	(2)
5	0170033	2	Circlip	(1)
6	0101138	1	Bracket	(1)
7	3737A101	1	Lever	(1) Right Hand
8	0780005	1	Spring	(1)
9	3737A101	1	Lever	(1) Right Hand
10	0330505	1	Spacer	(1)
11	37521212	1	Bracket	(1)
12	2112A066	1	Pin	(1)
13	0330505	1	Spacer	(1)
14	3737A091	1	Lever	(1) Left Hand
15	0780175	1	Spring	(1)
16	35568352	1	Pipe,Oil	(1)
17	3737A101	1	Lever	(1) Right Hand
18	0330505	1	Spacer	(1)
19	0101138	1	Bracket	(1)
20	0330505	1	Spacer	(1)
21	3737A091	1	Lever	(1) Left Hand
22	0780005	1	Spring	(1)
23	3737A091	1	Lever	(1) Left Hand
24	0101138	1	Bracket	(1)
25	0170033	1	Circlip	(1)
26	0860012	6	Tappet	
27	32151116	6	Screw	
28	0576052	6	Nut	
29	2214209	2	Stud	
30	2211283	2	Nut	
31	0920004	2	Washer	
32	32754435	2	Stud	
33	2211283	2	Nut	
34	0920004	2	Washer	
35	0206002	1	Union	
36	37188557	1	Cyl.Head Cover	
37	36811115	1	Joint	
38	0576102	2	Nut	
39	3314P004	2	Washer	
40	3381A003	2	Washer	
41	35732479	1	Pipe,Breather	
42	0202058	1	Hose	
43	21825195	1	Clip	Repairs and replaces 2481863
44	21825195	1	Clip	Repairs and replaces 2481863
45	2217572	1	Stud	
46	0576002	1	Nut	
47	0920460	1	Spacer	
48	0920053	1	Washer	

**Buy Now**



Our support email:

[ebooklibonline@outlook.com](mailto:ebooklibonline@outlook.com)