

Page Title	Page Number
ENGINE - AD3.152 ENGINE	1
CYLINDER BLOCK - AD3.152 ENGINE	2
CRANKSHAFT, PISTONS AND CONNECTING RODS - AD3.152 ENGINE	3
CYLINDER HEAD - AD3.152 ENGINE	4
ROCKER SHAFT - AD3.152 ENGINE	5
TIMING GEAR AND CAMSHAFT - AD3.152 ENGINE	6
FUEL INJECTION EQUIPMENT (DIESEL) - AD3.152 ENGINE	7
LUBRICATING OIL SUMP - AD3.152 ENGINE	8
LUBRICATING OIL FILTER AND INTEGRAL COOLER - AD3.152 ENGINE	9
WATER PUMP, THERMOSTAT AND HEAT EXCHANGER - AD3.152 ENGINE	10
LOW PRESSURE FUEL SYSTEM - AD3.152 ENGINE	11
AIR INDUCTION AND EXHAUST SYSTEM - AD3.152 ENGINE	12
ALTERNATOR POSITIONER - AD3.152 ENGINE	13
JOINTS AND GASKETS - AD3.152 ENGINE	14
ALTERNATOR-LUCAS	15
ALTERNATOR - VALEO TYPE	16
STARTER MOTOR - UP TO SERIAL NUMBER- R37033.	17
STARTER MOTOR - FROM SERIAL NO R37034.	18
STARTER MOTOR - FROM SERIAL NO R37034.	19
COOLING SYSTEM-ENGINE - FAN AND HOSES	20
COOLING SYSTEM - RADIATOR AND BRACKET	21
FUEL SYSTEM-FUEL FILTER	22
FUEL SYSTEM-FUEL FILTER	23
FUEL SYSTEM-FUEL TANK AND ATTACHMENTS	24
AIR FILTER-OIL BATH AIR FILTER	25
EXHAUST SYSTEM-VERTICAL	26
THROTTLE CONTROLS	27
THROTTLE CONTROLS	28
ELECTRONIC HARNESS-INSTRUMENT PANEL	29
ELECTRICAL WIRING - FRONT	30
BATTERY	31
INSTRUMENT PANEL AND INSTRUMENTS	32
INSTRUMENT PANEL AND INSTRUMENTS	33
CLUTCH-DUAL CLUTCH - O.M.G. - 11	34
CLUTCH-DUAL CLUTCH - LUK - 11	35
CLUTCH-DUAL CLUTCH - LUK - 11	36
CLUTCH-DUAL CLUTCH - O.M.G. - 11	37
CLUTCH PEDAL AND LINKAGE	38
CENTRE AXLE HOUSING AND TRANSMISSION HOUSING	39
TRANSFER GEAR BOX	40
12 SPEED TRANSMISSION	41
12 SPEED TRANSMISSION	42
SHIFT LEVERS-12 SPEED TRANSMISSION	43
SHIFT LEVERS-12 SPEED TRANSMISSION	44
REDUCER - FOR SHUTTLE VERSION ONLY.	45
REDUCER CONTROL - FOR SHUTTLE VERSION ONLY.	46
REDUCER - OVERDRIVE AND SHUTTLE VERSION	47
REDUCER CONTROL - OVERDRIVE AND SHUTTLE VERSION	48
REDUCER - OVERDRIVE AND UNDERDRIVE VERSION	49
REDUCER CONTROL - OVERDRIVE AND UNDERDRIVE VERSION	50
REDUCER - UNDERDRIVE AND SHUTTLE VERSION	51
REDUCER CONTROL - UNDERDRIVE AND SHUTTLE VERSION	52
REDUCER - SHUTTLE AND CREEPER VERSION	53
REDUCER CONTROL - SHUTTLE AND CREEPER VERSION	54
REDUCER - OVERDRIVE AND CREEPER VERSION	55
REDUCER CONTROL - OVERDRIVE AND CREEPER VERSION	56
REDUCER - UNDERDRIVE E CREEPER VERSION	57
REDUCER CONTROL - UNDERDRIVE E CREEPER VERSION	58
PTO SHAFT - STANDARD	59
PTO SHAFT - 540/750/1000 R.P.M.	60
PTO SHAFT - STANDARD	61
PTO SHAFT - 540/750/1000 R.P.M.	62
TRANSFER GEAR BOX-4 WHEEL DRIVE - CONTROL SHAFT	63
REAR AXLE-DIFFERENTIAL	64
REAR AXLE-HOUSING	65
BRAKE AND CONTROLS - STANDARD	66

TABLE OF CONTENT

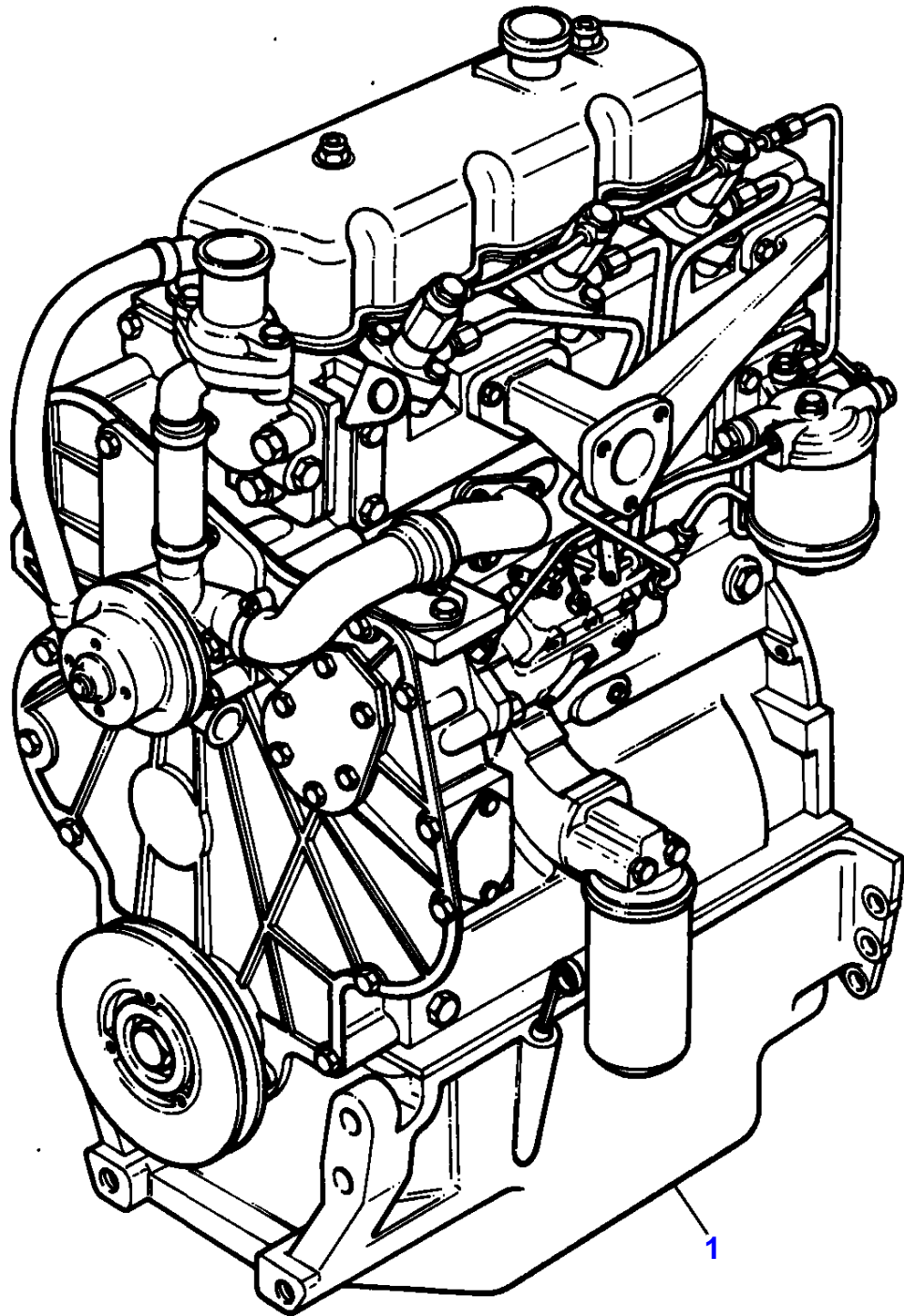
BRAKE AND CONTROLS - WITH BRAKES INDEPENDENTS	67
BRAKES-HANDBRAKE - WITH BRAKES INDEPENDENTS	68
BRAKES-HANDBRAKE - STANDARD	69
BRAKE AND CONTROLS	70
REAR AXLE-DIFFERENTIAL LOCK MECHANISM - HYDRAULIC CONTROL	71
REAR AXLE-DIFFERENTIAL LOCK MECHANISM - HYDRAULIC CONTROL	72
TRAILER BRAKES-PIPES AND FITTINGS	73
REAR WHEELS	74
FRONT WHEELS	75
FRONT AXLE 2 WHEEL DRIVE-AXLE SUPPORT	76
FRONT AXLE 4 WHEEL DRIVE-DIFFERENTIAL	77
FRONT AXLE 4 WHEEL DRIVE-DIFFERENTIAL - WITH HYDRAULIC BLOCKING	78
FRONT AXLE 4 WHEEL DRIVE-FINAL DRIVE	79
FRONT AXLE 4 WHEEL DRIVE-DIFFERENTIAL LOCK MECHANISM - WITH HYDRAULIC BLOCKING	80
FRONT AXLE 4 WHEEL DRIVE-FINAL DRIVE - WITH- FRONT BRAKING	81
STEERING HYDRAULIC LINES	82
STEERING ORBITROL UNIT - 2 WHEEL DRIVE	83
STEERING ORBITROL UNIT - 4 WHEELS DRIVE	84
STEERING-STEERING PUMP - UP TO SERIAL NUMBER- R31000	85
STEERING-STEERING PUMP - FROM SERIAL NO- R31001.	86
STEERING CYLINDER-2 WHEEL DRIVE	87
STEERING CYLINDER-4 WHEEL DRIVE	88
HYDRAULIC LIFT PIPINGS - UP TO SERIAL NUMBER- P06076.	89
HYDRAULIC LIFT PIPINGS - FROM SERIAL NO- P06077.	90
HYDRAULIC PUMP - UP TO SERIAL NUMBER- P06076.	91
HYDRAULIC PUMP - FROM SERIAL NO- P06077.	92
HYDRAULIC PUMP - FROM SERIAL NO- P06077.	93
HYDRAULIC LIFT VALVE	94
HYDRAULIC LIFT-LIFT ARMS	95
REAR CONTROLS-DRAFT AND POSITION	96
REAR CONTROLS-DRAFT AND POSITION	97
HYDRAULIC LIFT-EXTERNAL POSITION CONTROL	98
STABILISER-TELESCOPIC	99
AUXILIARY HYDRAULIC VALVE LINES - TILL TYPE	100
AUXILIARY HYDRAULIC VALVE LINES - TILL TYPE	101
AUXILIARY HYDRAULIC VALVE LINES	102
AUXILIARY HYDRAULIC VALVE LINES	103
AUXILIARY HYDRAULIC VALVE LINES - ADDITIONAL POWER OUTLET UNIT	104
AUXILIARY HYDRAULICS VALVE - STANDARD	105
AUXILIARY HYDRAULICS VALVE - FLOATING	106
AUXILIARY HYDRAULICS VALVE - STANDARD	107
AUXILIARY HYDRAULICS VALVE - FLOATING	108
CONTROL VALVE-VALVE	109
LINKAGE CAT 2 - STANDARD	110
LINKAGE CAT 2 - WITH WINTERCHANGEABLE BALLJOINT	111
SHEET METAL-HOOD	112
SHEET METAL-PANELS	113
DECALS	114
DECALS	115
DECALS	116
FENDERS - FRONT	117
SEAT-GRAMMER	118
TRACTOR CAB-FENDERS AND PLATFORM	119
TRACTOR CAB-FENDERS AND PLATFORM	120
TRACTOR CAB-FENDERS AND PLATFORM - FENDER EXTENSION	121
TRACTOR CAB-FRAME	122
TRACTOR CAB-FRAME	123
TRACTOR CAB-ROOF	124
TRACTOR CAB-DOORS	125
TRACTOR CAB-WINDOWS - WINDSCREEN	126
TRACTOR CAB-WINDOWS	127
TRACTOR CAB-WINDOWS - REAR	128
TRACTOR CAB-ELECTRICAL EQUIPMENT	129
TRACTOR CAB-WINDSCREEN WIPER	130
TRACTOR CAB-CAB INSULATION	131
TRACTOR CAB-HEATER	132
LIGHTING EQUIPMENT-REAR	133
LIGHTING EQUIPMENT-REAR	134

TABLE OF CONTENT

00

LIGHTING EQUIPMENT-REAR	135
LIGHTING EQUIPMENT	136
WEIGHT FRAME AND WEIGHTS	137
HITCH CONNECTIONS	138
REAR HOOK-ADJUSTABLE	139
REAR HOOK-ADJUSTABLE	140
REAR HOOK-ADJUSTABLE - WITH 6 POSITIONS	141
REAR HOOK-ADJUSTABLE - WITH 6 POSITIONS	142
REAR HOOK-ADJUSTABLE - WITH 6 POSITIONS	143
REAR HOOK-ADJUSTABLE - WITH 7 POSITIONS	144
DRAWBAR	145
DRAWBAR - HEAVY DUTY	146
DRAWBAR - HEAVY DUTY	147
TOOL KIT	148

C-0011-12M-A



MASSEY FERGUSON

MF 353 S TRACTOR - 3311419

3311419

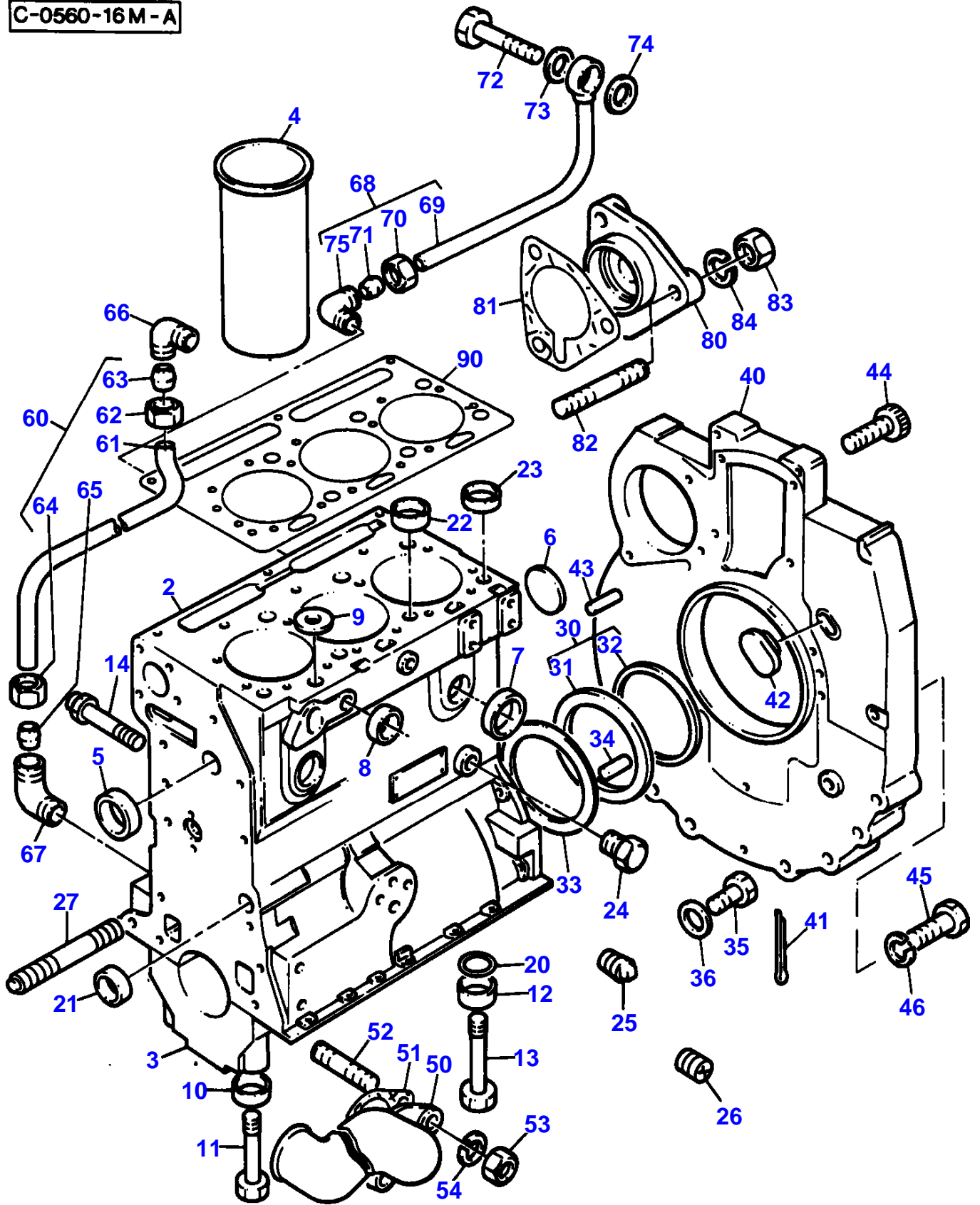
ENGINE - AD3.152 ENGINE

1

Item	Part Number	Qty	Description	Comments
------	-------------	-----	-------------	----------

1	CE31197	X	Parts Book	AD3.152 ENGINE
---	---------	---	------------	----------------

C-0560-16M-A



MASSEY FERGUSON

MF 353 S TRACTOR - 3311419

3311419

CYLINDER BLOCK - AD3.152 ENGINE

2

Item	Part Number	Qty	Description	Comments
				AD3.152 ENGINE
1	ZZ 50172	1	Kit,Cyl.Block	Repairs and replaces ZZ50119
2		1	Cylinder Block	(1) Not serviced, order REF.1
3		4	Bearing Cap	(1) Not serviced, order REF.1
4	31358356	3	Liner	(1) (A)
4	31358358	X	Liner	(1) Thickness (+)0.76MM Thickness (+)0.030"
5	0650710	1	Plug	(1)
6	0650692	1	Plug	(1)
7	0650710	4	Plug	Repairs and replaces 0650664 (1)
8	32417163	2	Plug	Repairs and replaces 0650563 (1)
9	33141124	1	Plug	Repairs and replaces 32417115 (1)
10	33137408	6	Thimble	(1)
11	32181441	6	Screw	(1)
12	33137408	2	Thimble	(1)
13	32181442	2	Screw	(1)
14	2485A204	1	Plug	(1)
20	2415608	2	O Ring	
21	0650566	2	Plug	
22	33157142	2	Plug	
23	33157143	2	Plug	
24	32161114	1	Plug	
25	0650594	1	Plug	
26	32114472	2	Plug	
27	32537404	1	Stud	
30	4142V002	1	Housing	
31		1	Housing	(30) Not serviced, order REF.30
32	2418F475	1	Seal	(30)
33	33826111	1	Joint	
34	0350015	2	Dowel	
35	0746255	9	Setscrew	
36	0920003	9	Washer	
40	37147975	1	Plate	
41	0610045	1	Pin	
42	37813113	1	Plug	
43	0350016	2	Dowel	
44	0720798	2	Screw	
45	0746454	6	Setscrew	
46	0920054	6	Washer	
50	3765T011	1	Connection	
51	0490486	1	Joint	
52	2217072	2	Stud	
53	0576002	2	Nut	
54	0920053	2	Washer	
60	35352404	1	Pipe,Oil	
61		1	Pipe	(60) Not serviced, order REF.60
62	0576111	1	Nut	(60)
63	0566002	1	Olive	(60)
64	0576111	1	Nut	(60)
65	0566002	1	Olive	(60)
66	0201047	1	Connection	
67	0201047	1	Connection	
68	35568109	1	Pipe,Oil	
69		1	Pipe	(68) Not serviced, order REF.68
70	0576111	1	Nut	(68)
71	0566002	1	Olive	(68)
72	0095350	1	Bolt	
73	0920126	1	Washer	
74	0920126	1	Washer	

MASSEY FERGUSON

MF 353 S TRACTOR - 3311419

3311419

CYLINDER BLOCK - AD3.152 ENGINE

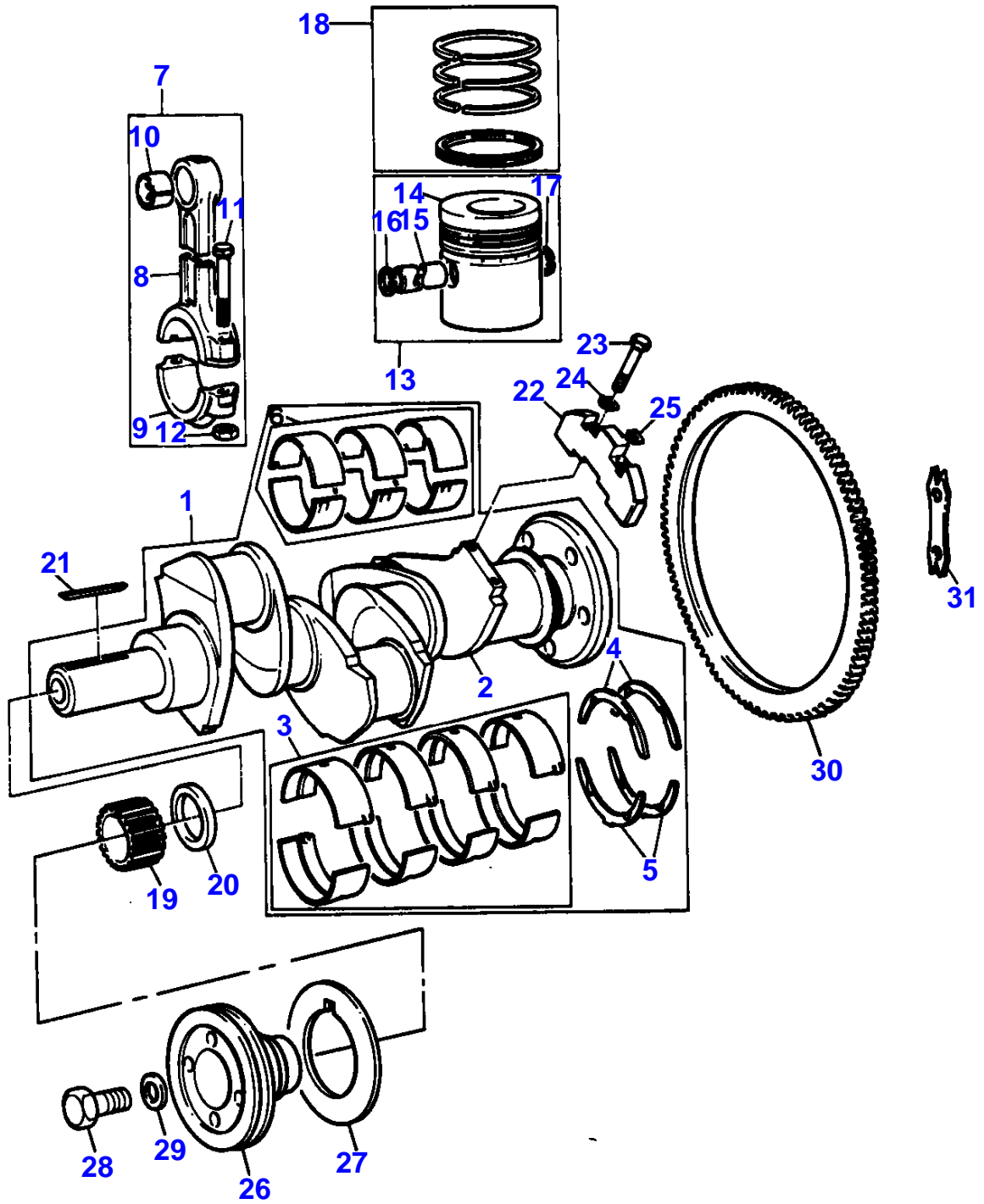
2

Item	Part Number	Qty	Description	Comments
75	0201047	1	Connection	
80	37416753	1	Plate	
81	36862511	1	Joint	
82	0826201	3	Stud	
83	0576002	3	Nut	
84	0920053	3	Washer	
90	3681E015	1	Gasket	Repairs and replaces 3681E006

(A)  
PRESS FIT PARALLEL LINER.



C-0563-15M - A



CRANKSHAFT, PISTONS AND CONNECTING RODS - AD3.152 ENGINE

Item	Part Number	Qty	Description	Comments
				AD3.152 ENGINE
1	ZZ 90078	1	Kit, Crankshaft	Repairs and replaces ZZ90122 Repairs and replaces U5BG0027 Repairs and replaces ZZ90019
2		1	Crankshaft	(1) Not serviced, order REF.1
3	68084	X	Kit, Bearing	(A)
	68084A	X	Kit, Bearing	(A) Thickness (-)0.25MM Thickness (-)0.010"
3	68084B	X	Kit, Bearing	(A) Thickness (-)0.50MM Thickness (-)0.020"
3	68084C	X	Kit, Bearing	(A) Thickness (-)0.75MM Thickness (-)0.030"
4	31137211	2	Thrust Washer	(1)
	31137212	X	Washer	Thickness (+)0.19MM Thickness (+)0.0075"
5	31137221	2	Thrust Washer	(1)
	31137222	X	Washer	Thickness (+)0.19MM Thickness (+)0.0075"
6	85036	1	Kit, Bearing	(1) (A)
6	85036A	X	Kit, Bearing	(A) Thickness (-)0.25MM Thickness (-)0.010"
6	85036B	X	Kit, Bearing	(A) Thickness (-)0.50MM Thickness (-)0.020"
6	85036C	X	Kit, Bearing	(A) Thickness (-)0.75MM Thickness (-)0.030"
7	ZZ 90010	1	Kit, Conrod	
8		1	Conrod	(7) Not serviced, order REF.7
9		1	Cap	(7) Not serviced, order REF.7
10	31134151	1	Bush	(7)
11	0095250	2	Bolt	(7)
12	33221327	2	Nut	(7)
13	68302	3	Kit, Piston	(B)
	89214	3	Kit, Piston	(C)
14		1	Piston	(13) Not serviced, order REF.13
15		1	Pin	(13) Not serviced, order REF.13
16	0170001	1	Circlip	(13)
17	0170001	1	Circlip	(13)
18	41158065	3	Kit, Piston Ring	
19	0410132	1	Gear,Crankshaft	Number of teeth/spines 25
20	0330811	1	Spacer	
21	36271704	1	Woodruff Key	
22	31328242	2	Weight	(D)
23	2185189	4	Screw	
24	31731515	2	Washer	
25	31731516	2	Washer	
26	31147788	1	Pulley,Crank	
27	33176137	1	Washer	
28	32162312	1	Screw	
29	33125112	1	Washer	
30	0410236	1	Starter Ring	Number of teeth/spines 115
31	0921062	3	Tab Washer	

(A)  
PRE-FINISHED

(B)  
UNTOPPED

MASSEY FERGUSON

MF 353 S TRACTOR - 3311419

3311419

CRANKSHAFT, PISTONS AND CONNECTING RODS - AD3.152 ENGINE

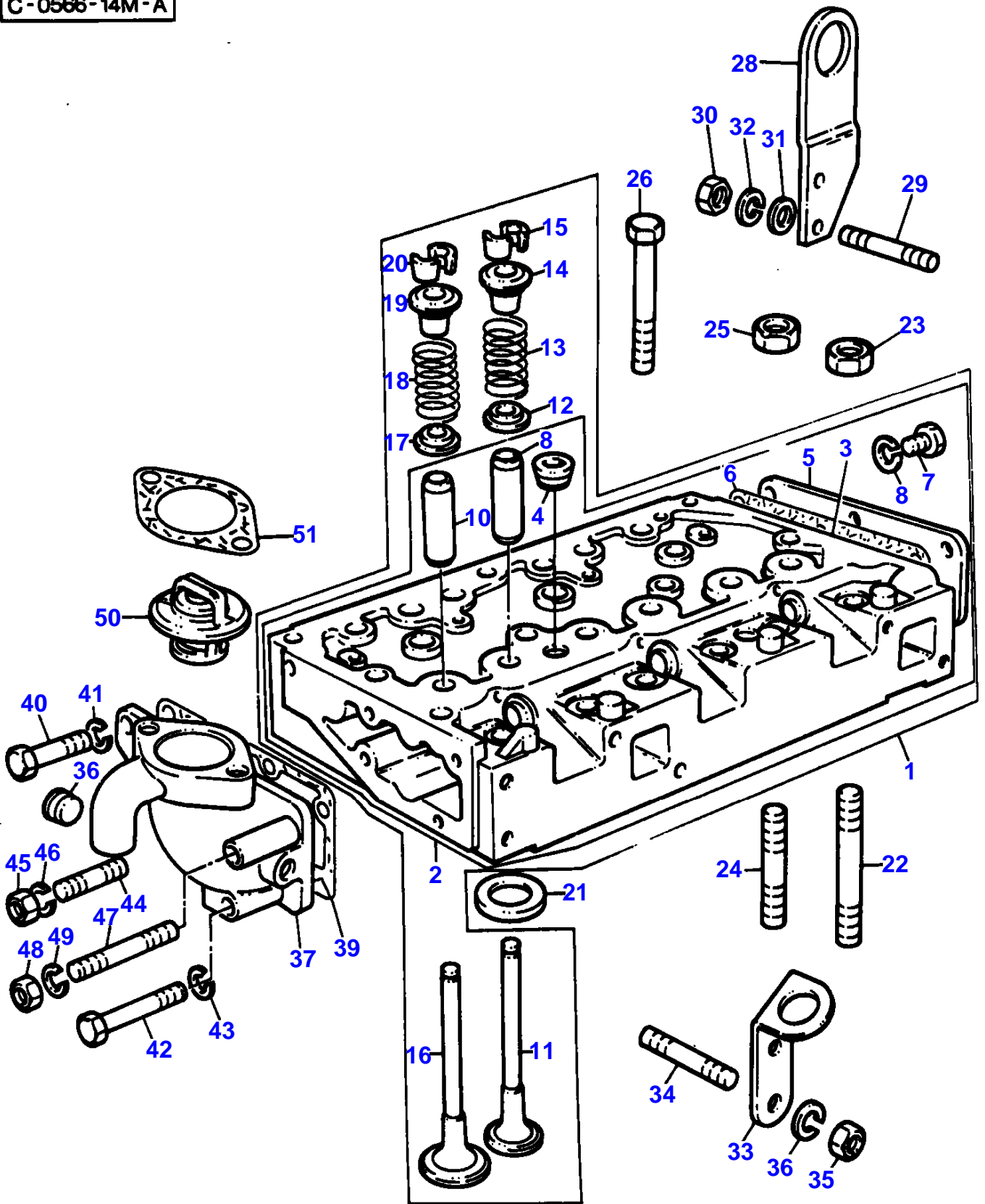
3

Item	Part Number	Qty	Description	Comments
------	-------------	-----	-------------	----------

(C)  
PRE-TOPPED

(D)  
REPLACES 31328241 IN ENGINE SETS ONLY(QTY 2).

C-0566-14M-A



Item	Part Number	Qty	Description	Comments
				AD3.152 ENGINE
1	ZZ 80082	1	Kit, Cyl. Head	
2	ZZ 80017	1	Kit, Cyl. Head	(1)
3		1	Cylinder Head	(2)
				Not serviced, order REF.2
4	2431154	2	Plug	(2)
5	3612M002	1	Plate	(2)
6	0490485	1	Joint	(2)
7	0746254	6	Setscrew	(2)
8	0920053	6	Washer	(2)
9	33261723	3	Guide	(2)
10	33261723	3	Guide	(2)
11	3142A081	3	Valve Exhaust	(1)
				Repairs and replaces 31431011
12	33415133	3	Washer	(1)
13	0780012	3	Spring	(1)
				(A)
13	0780006	3	Spring	(B)
14	33423148	3	Cap	(1)
15	0230001	6	Cotter	(1)
				(C)
16	31431681	3	Valve Inlet	(1)
17	33415133	3	Washer	(1)
18	0780012	3	Spring	(1)
				(D)
18	0780006	3	Spring	(E)
19	33423148	3	Cap	(1)
20	0230001	6	Cotter	(1)
				(C)
21	33124428	3	Insert	
22	32524132	1	Stud	
23	33221329	1	Nut	
24	32524148	3	Stud	
25	33221329	3	Nut	
26	32181457	5	Screw	
27	32181458	9	Screw	
28	36531408	1	Plate	
29	2216194	1	Stud	
30	0576051	2	Nut	
31	0920004	2	Washer	
32	0920054	2	Washer	
33	36456321	1	Plate	
34	0826462	2	Stud	
35	0576051	2	Nut	
36	0920054	2	Washer	
37	37766363	1	Body	
38	2431A054	1	Plug	
39	0490482	1	Joint	
40	0746255	2	Setscrew	
41	0920053	2	Washer	
42	0096437	1	Bolt	
43	0920054	1	Washer	
44	2217072	1	Stud	
45	0576002	1	Nut	
46	0920053	1	Washer	
47	2215178	1	Stud	
48	0576051	1	Nut	
49	0920054	1	Washer	
50	2485666	1	Thermostat	
51	0490184	1	Joint	

(A)  
REMOVE AND FIT 0780006

(B)  
FITTED IN PLACE OF EXHAUST VALVE SPRINGS SUPPLIED WITH CYLINDER HEAD ASSEMBLY

MASSEY FERGUSON

MF 353 S TRACTOR - 3311419

3311419

CYLINDER HEAD - AD3.152 ENGINE

4

Item	Part Number	Qty	Description	Comments
				(C) SERVICED IN PAIRS
				(D) REMOVE AND FIT 0780006
				(E) FITTED IN PLACE OF INLET VALVE SPRINGS SUPPLIED WITH CYLINDER HEAD ASSEMBLY

**Buy Now**



Our support email:

[ebooklibonline@outlook.com](mailto:ebooklibonline@outlook.com)