

Page Title	Page Number
ENGINE - T3.152.4 ENGINE	1
CYLINDER BLOCK - T3.152.4 ENGINE	2
CRANKSHAFT, PISTONS AND CONNECTING RODS - T3.152.4 ENGINE	3
CYLINDER HEAD - T3.152.4 ENGINE	4
ROCKER SHAFT - T3.152.4 ENGINE	5
TIMING GEAR AND CAMSHAFT - T3.152.4 ENGINE	6
FUEL INJECTION EQUIPMENT (DIESEL) - T3.152.4 ENGINE	7
LUBRICATING OIL SUMP - T3.152.4 ENGINE	8
LUBRICATING OIL FILTER AND INTEGRAL COOLER - T3.152.4 ENGINE	9
WATER PUMP, THERMOSTAT AND HEAT EXCHANGER - T3.152.4 ENGINE	10
LOW PRESSURE FUEL SYSTEM - T3.152.4 ENGINE	11
TURBOCHARGER - T3.152.4 ENGINE	12
TURBOCHARGER-INLET AND EXHAUST MANIFOLD - T3.152.4 ENGINE	13
TURBOCHARGER-PIPES AND HEAT SHIELDS - T3.152.4 ENGINE	14
ALTERNATOR POSITIONER - T3.152.4 ENGINE	15
JOINTS AND GASKETS - T3.152.4 ENGINE	16
ALTERNATOR-LUCAS	17
ALTERNATOR - VALEO TYPE	18
STARTER MOTOR - UP TO SERIAL NUMBER- R37033.	19
STARTER MOTOR - FROM SERIAL NO R37034.	20
STARTER MOTOR - FROM SERIAL NO R37034.	21
COOLING SYSTEM-ENGINE - FAN AND HOSES	22
COOLING SYSTEM - RADIATOR AND BRACKET	23
FUEL SYSTEM-FUEL FILTER	24
FUEL SYSTEM-FUEL FILTER	25
FUEL SYSTEM-FUEL TANK AND ATTACHMENTS	26
AIR FILTER-OIL BATH AIR FILTER	27
EXHAUST SYSTEM-VERTICAL	28
THROTTLE CONTROLS	29
THROTTLE CONTROLS	30
ELECTRONIC HARNESS-INSTRUMENT PANEL	31
ELECTRICAL WIRING - FRONT	32
BATTERY	33
INSTRUMENT PANEL AND INSTRUMENTS	34
INSTRUMENT PANEL AND INSTRUMENTS	35
CLUTCH-DUAL CLUTCH - O.M.G. - 11	36
CLUTCH-DUAL CLUTCH - LUK - 11	37
CLUTCH-DUAL CLUTCH - LUK - 11	38
CLUTCH-DUAL CLUTCH - O.M.G. - 11	39
CLUTCH PEDAL AND LINKAGE	40
CENTRE AXLE HOUSING AND TRANSMISSION HOUSING	41
TRANSFER GEAR BOX	42
12 SPEED TRANSMISSION	43
12 SPEED TRANSMISSION	44
SHIFT LEVERS-12 SPEED TRANSMISSION	45
SHIFT LEVERS-12 SPEED TRANSMISSION	46
REDUCER - FOR SHUTTLE VERSION ONLY.	47
REDUCER CONTROL - FOR SHUTTLE VERSION ONLY.	48
REDUCER - OVERDRIVE AND SHUTTLE VERSION	49
REDUCER CONTROL - OVERDRIVE AND SHUTTLE VERSION	50
REDUCER - OVERDRIVE AND UNDERDRIVE VERSION	51
REDUCER CONTROL - OVERDRIVE AND UNDERDRIVE VERSION	52
REDUCER - UNDERDRIVE AND SHUTTLE VERSION	53
REDUCER CONTROL - UNDERDRIVE AND SHUTTLE VERSION	54
REDUCER - SHUTTLE AND CREEPER VERSION	55
REDUCER CONTROL - SHUTTLE AND CREEPER VERSION	56
REDUCER - OVERDRIVE AND CREEPER VERSION	57
REDUCER CONTROL - OVERDRIVE AND CREEPER VERSION	58
REDUCER - UNDERDRIVE E CREEPER VERSION	59
REDUCER CONTROL - UNDERDRIVE E CREEPER VERSION	60
PTO SHAFT - STANDARD	61
PTO SHAFT - 540/750/1000 R.P.M.	62
PTO SHAFT - STANDARD	63
PTO SHAFT - 540/750/1000 R.P.M.	64
TRANSFER GEAR BOX-4 WHEEL DRIVE - CONTROL SHAFT	65
REAR AXLE-DIFFERENTIAL	66

TABLE OF CONTENT

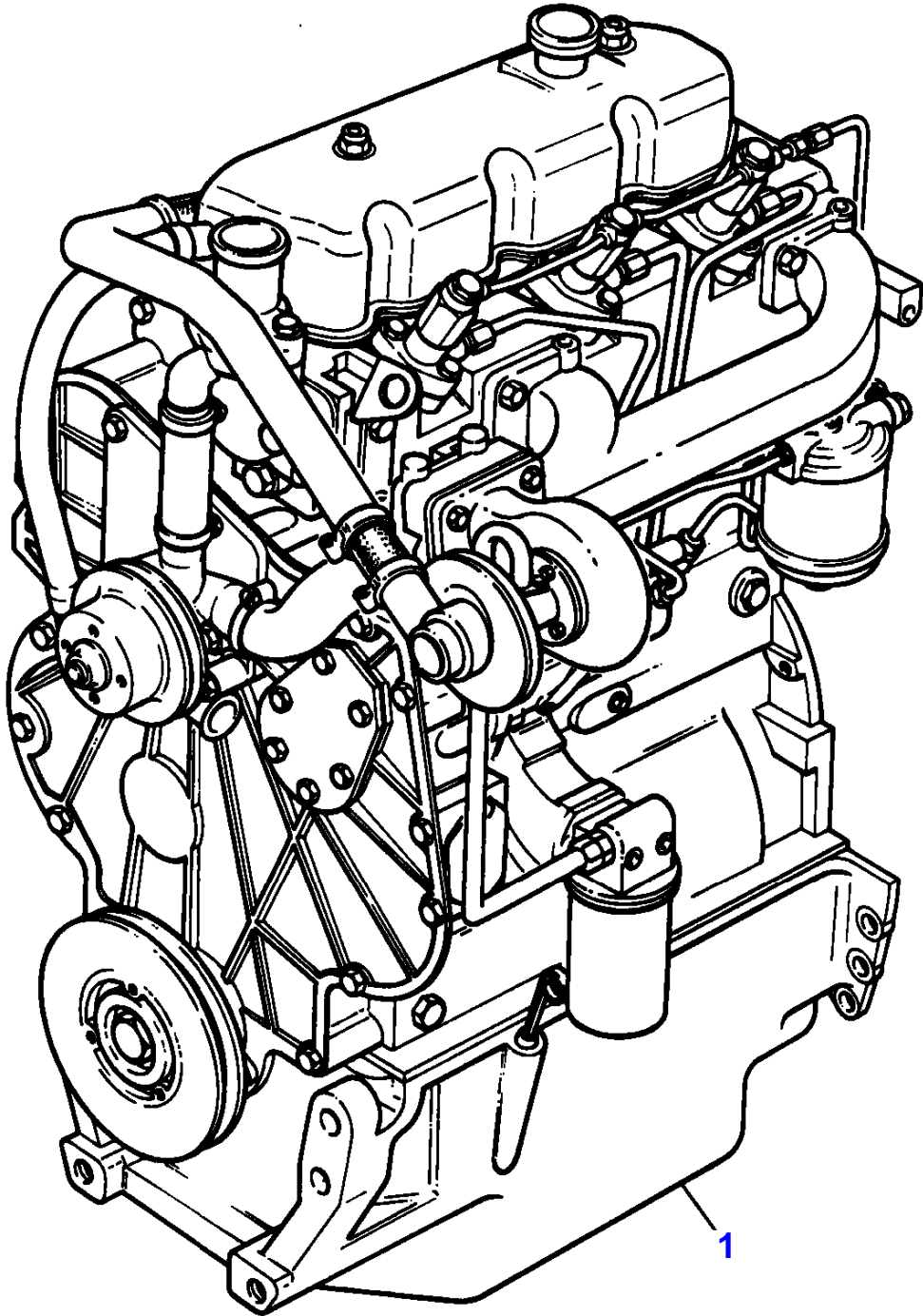
REAR AXLE-HOUSING	67
BRAKE AND CONTROLS - STANDARD	68
BRAKE AND CONTROLS - WITH BRAKES INDEPENDENTS	69
BRAKES-HANDBRAKE - WITH BRAKES INDEPENDENTS	70
BRAKES-HANDBRAKE - STANDARD	71
BRAKE AND CONTROLS	72
REAR AXLE-DIFFERENTIAL LOCK MECHANISM - HYDRAULIC CONTROL	73
REAR AXLE-DIFFERENTIAL LOCK MECHANISM - HYDRAULIC CONTROL	74
TRAILER BRAKES-PIPES AND FITTINGS	75
REAR WHEELS	76
FRONT WHEELS	77
FRONT AXLE 2 WHEEL DRIVE-AXLE SUPPORT	78
FRONT AXLE 4 WHEEL DRIVE-DIFFERENTIAL	79
FRONT AXLE 4 WHEEL DRIVE-DIFFERENTIAL - WITH HYDRAULIC BLOCKING	80
FRONT AXLE 4 WHEEL DRIVE-FINAL DRIVE	81
FRONT AXLE 4 WHEEL DRIVE-DIFFERENTIAL LOCK MECHANISM - WITH HYDRAULIC BLOCKING	82
FRONT AXLE 4 WHEEL DRIVE-FINAL DRIVE - WITH- FRONT BRAKING	83
STEERING HYDRAULIC LINES	84
STEERING ORBITROL UNIT - 2 WHEEL DRIVE	85
STEERING ORBITROL UNIT - 4 WHEELS DRIVE	86
STEERING-STEERING PUMP - UP TO SERIAL NUMBER- R31000	87
STEERING-STEERING PUMP - FROM SERIAL NO- R31001.	88
STEERING CYLINDER-2 WHEEL DRIVE	89
STEERING CYLINDER-4 WHEEL DRIVE	90
HYDRAULIC LIFT PIPINGS - UP TO SERIAL NUMBER- P06076.	91
HYDRAULIC LIFT PIPINGS - FROM SERIAL NO- P06077.	92
HYDRAULIC PUMP - UP TO SERIAL NUMBER- P06076.	93
HYDRAULIC PUMP - FROM SERIAL NO- P06077.	94
HYDRAULIC PUMP - FROM SERIAL NO- P06077.	95
HYDRAULIC LIFT VALVE	96
HYDRAULIC LIFT-LIFT ARMS	97
REAR CONTROLS-DRAFT AND POSITION	98
REAR CONTROLS-DRAFT AND POSITION	99
HYDRAULIC LIFT-EXTERNAL POSITION CONTROL	100
STABILISER-TELESCOPIC	101
AUXILIARY HYDRAULIC VALVE LINES - ADDITIONAL POWER OUTLET UNIT	102
AUXILIARY HYDRAULIC VALVE LINES - TILL TYPE	103
AUXILIARY HYDRAULIC VALVE LINES	104
AUXILIARY HYDRAULIC VALVE LINES	105
AUXILIARY HYDRAULIC VALVE LINES - ADDITIONAL POWER OUTLET UNIT	106
AUXILIARY HYDRAULICS VALVE - STANDARD	107
AUXILIARY HYDRAULICS VALVE - FLOATING	108
AUXILIARY HYDRAULICS VALVE - STANDARD	109
AUXILIARY HYDRAULICS VALVE - FLOATING	110
CONTROL VALVE-VALVE	111
LINKAGE CAT 2 - STANDARD	112
SHEET METAL-HOOD	113
SHEET METAL-PANELS	114
DECALS	115
DECALS	116
DECALS	117
FENDERS - FRONT	118
SEAT-GRAMMER	119
TRACTOR CAB-FENDERS AND PLATFORM	120
TRACTOR CAB-FENDERS AND PLATFORM	121
TRACTOR CAB-FENDERS AND PLATFORM - FENDER EXTENSION	122
TRACTOR CAB-FRAME	123
TRACTOR CAB-FRAME	124
TRACTOR CAB-ROOF	125
TRACTOR CAB-DOORS	126
TRACTOR CAB-WINDOWS - WINDSCREEN	127
TRACTOR CAB-WINDOWS	128
TRACTOR CAB-WINDOWS - REAR	129
TRACTOR CAB-ELECTRICAL EQUIPMENT	130
TRACTOR CAB-WINDSCREEN WIPER	131
TRACTOR CAB-CAB INSULATION	132
TRACTOR CAB-HEATER	133
LIGHTING EQUIPMENT-REAR	134

TABLE OF CONTENT

00

LIGHTING EQUIPMENT-REAR	135
LIGHTING EQUIPMENT-REAR	136
LIGHTING EQUIPMENT	137
WEIGHT FRAME AND WEIGHTS	138
HITCH CONNECTIONS	139
REAR HOOK-ADJUSTABLE	140
REAR HOOK-ADJUSTABLE	141
REAR HOOK-ADJUSTABLE - WITH 6 POSITIONS	142
REAR HOOK-ADJUSTABLE - WITH 6 POSITIONS	143
DRAWBAR - HEAVY DUTY	144
REAR HOOK-ADJUSTABLE - WITH 7 POSITIONS	145
DRAWBAR	146
DRAWBAR - HEAVY DUTY	147
DRAWBAR - HEAVY DUTY	148
TOOL KIT	149

C-0011-13M-A



MASSEY FERGUSON

MF 363 S TRACTOR - 3311420

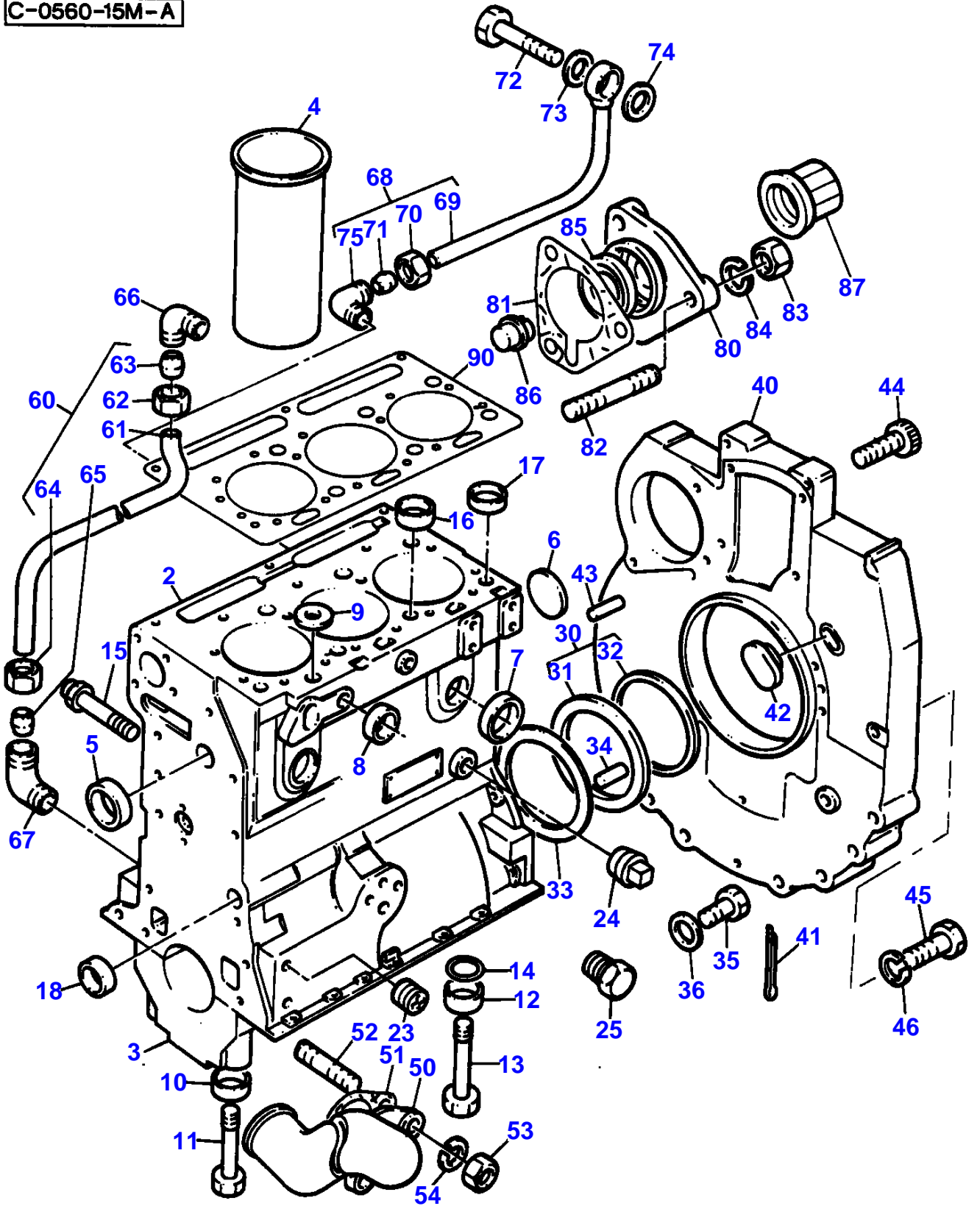
3311420

ENGINE - T3.152.4 ENGINE

1

Item	Part Number	Qty	Description	Comments
				T3.152.4 ENGINE
1	CN31198	X	Parts Book	

C-0560-15M-A



MASSEY FERGUSON

MF 363 S TRACTOR - 3311420

3311420

CYLINDER BLOCK - T3.152.4 ENGINE

2

Item	Part Number	Qty	Description	Comments
				T3.152.4 ENGINE
1	ZZ 50172	1	Kit,Cyl.Block	Repairs and replaces ZZ50173
				Repairs and replaces ZZ50133
2		1	Cylinder Block	(1)
				Not serviced, order REF.1
3		4	Bearing Cap	(1)
				Not serviced, order REF.1
4	31358356	3	Liner	(1)
				(A,B)
4	31358358	X	Liner	(1)
				(B)
				Thickness 0.030".76MM
				O/S
4	31358323	3	Liner	(1)
				(C,D)
4	31358345	X	Liner	(C,E)
5	0650710	1	Plug	(1)
6	0650566	1	Plug	(1)
7	0650710	4	Plug	(1)
8	32417115	2	Plug	(1)
9	33141124	1	Plug	(1)
10	33137408	6	Thimble	(1)
11	32181441	6	Screw	(1)
12	33137408	2	Thimble	(1)
13	32181442	2	Screw	(1)
14	2415608	2	O Ring	(1)
15	2485A204	1	Plug	(1)
16	33157142	2	Plug	(1)
17	33157143	2	Plug	(1)
18	0650566	1	Plug	(1)
23	32114472	2	Plug	
24	0650594	1	Plug	
25	32161114	1	Plug	
30	4142V002	1	Housing	
31		1	Housing	(30)
				Not serviced, order REF.30
32	2418F475	1	Seal	(30)
33	33826111	1	Joint	
34	0350015	2	Dowel	
35	0746255	9	Setscrew	
36	0920003	9	Washer	
40	37147975	1	Plate	
41	0610045	1	Pin	
42	37813113	1	Plug	
43	0350016	2	Dowel	
44	0720798	2	Screw	
45	0746454	6	Setscrew	
46	0920054	6	Washer	
50	3765T011	1	Connection	
51	0490486	1	Joint	
52	2217072	2	Stud	
53	0576002	2	Nut	
54	0920053	2	Washer	
60	35352404	1	Pipe,Oil	
61		1	Pipe	(60)
				Not serviced, order REF.60
62	0576111	1	Nut	(60)
63	0566002	1	Olive	(60)
64	0576111	1	Nut	(60)
65	0566002	1	Olive	(60)
66	0201047	1	Connection	
67	0201047	1	Connection	
68	35568109	1	Pipe,Oil	
69		1	Pipe	(68)
				Not serviced, order REF.68
70	0576111	1	Nut	(68)
71	0566002	1	Olive	(68)
72	0095350	1	Bolt	
73	0920126	1	Washer	

MASSEY FERGUSON

MF 363 S TRACTOR - 3311420

3311420

CYLINDER BLOCK - T3.152.4 ENGINE

2

Item	Part Number	Qty	Description	Comments
74	0920126	1	Washer	
75	0201047	1	Connection	
80	37416753	1	Plate	
81	36862511	1	Joint	
82	0826201	3	Stud	
83	0576002	3	Nut	
84	0920053	3	Washer	
90	3681E015	1	Gasket	Repairs and replaces 3681E006

(A)
PRESS FIT PARALLEL LINER.

(B)
USED ONLY WITH ZZ50133

(C)
USED ONLY WITH ZZ50173

(D)
PRESS FIT

(E)
SLIP FIT

Item	Part Number	Qty	Description	Comments
				T3.152.4 ENGINE
1	ZZ 90106	1	Kit, Crankshaft	Repairs and replaces U5BG0043
2		1	Crankshaft	(1) Not serviced, order REF.1
3	U5MB0008	X	Kit, Bearing	(A)
	U5MB0008A	X	Kit, Bearing	(A) Thickness (-)0.25MM Thickness (-)0.010"
3	U5MB0008B	X	Kit, Bearing	(A) Thickness (-)0.50MM Thickness (-)0.020"
3	U5MB0008C	X	Kit, Bearing	(A) Thickness (-)0.75MM Thickness (-)0.030"
4	31137211	2	Thrust Washer	(1)
	31137212	X	Washer	Thickness (+)0.19MM Thickness (+)0.0075"
5	31137221	2	Thrust Washer	(1)
	31137222	X	Washer	Thickness (+)0.19MM Thickness (+)0.0075"
6	U5ME0005	1	Kit, Bearing	(1) (A)
6	U5ME0005A	X	Kit, Bearing	(A) Thickness (-)0.25MM Thickness (-)0.010"
6	U5ME0005B	X	Kit, Bearing	(A) Thickness (-)0.50MM Thickness (-)0.020"
6	U5ME0005C	X	Kit, Bearing	(A) Thickness (-)0.75MM Thickness (-)0.030"
7	ZZ 90010	1	Kit, Conrod	
8		1	Conrod	(7) Not serviced, order REF.7
9		1	Cap	(7) Not serviced, order REF.7
10	31134151	1	Bush	(7)
11	0095250	2	Bolt	(7)
12	33221327	2	Nut	(7)
13	U5LP0029	3	Kit, Piston	(B)
	U5LU0023	3	Kit, Piston	(C)
14		1	Piston	(13) Not serviced, order REF.13
15		1	Pin	(13) Not serviced, order REF.13
16	2721A022	1	Circlip	(13)
17	2721A022	1	Circlip	(13)
18	4181A017	3	Kit, Piston Ring	
19	31147788	1	Pulley,Crank	
20	32162312	1	Screw	
21	33125112	1	Washer	
22	33176137	1	Washer	
23	0410132	1	Gear,Crankshaft	Number of teeth/spines 25
24	36271704	1	Woodruff Key	
25	0330811	1	Spacer	
26	31328242	2	Weight	(D)
27	2185189	2	Screw	
28	31731515	2	Washer	Right Hand
29	2185189	2	Screw	
30	31731516	2	Washer	Left Hand
31	0410236	1	Starter Ring	Number of teeth/spines 115
32	33117127	6	Washer	Repairs and replaces 33117121 (A) PRE-FINISHED (B) UNTOPPED

MASSEY FERGUSON

MF 363 S TRACTOR - 3311420

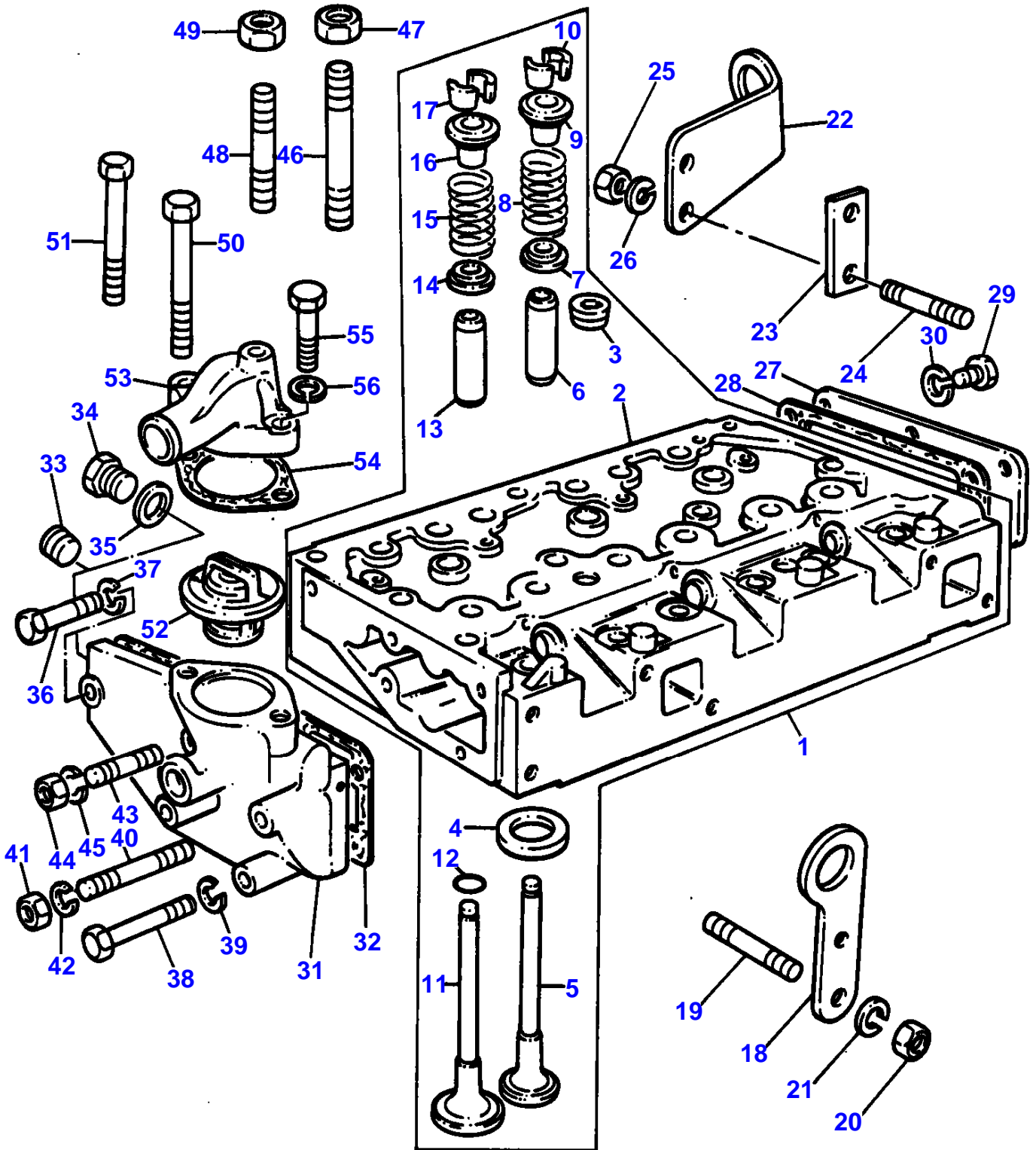
3311420

CRANKSHAFT, PISTONS AND CONNECTING RODS - T3.152.4 ENGINE

3

Item	Part Number	Qty	Description	Comments
				(C) PRE-TOPPED
				(D) REPLACES 31328241 IN ENGINE SETS ONLY(QTY 2).

C - 0566 - 13M - A

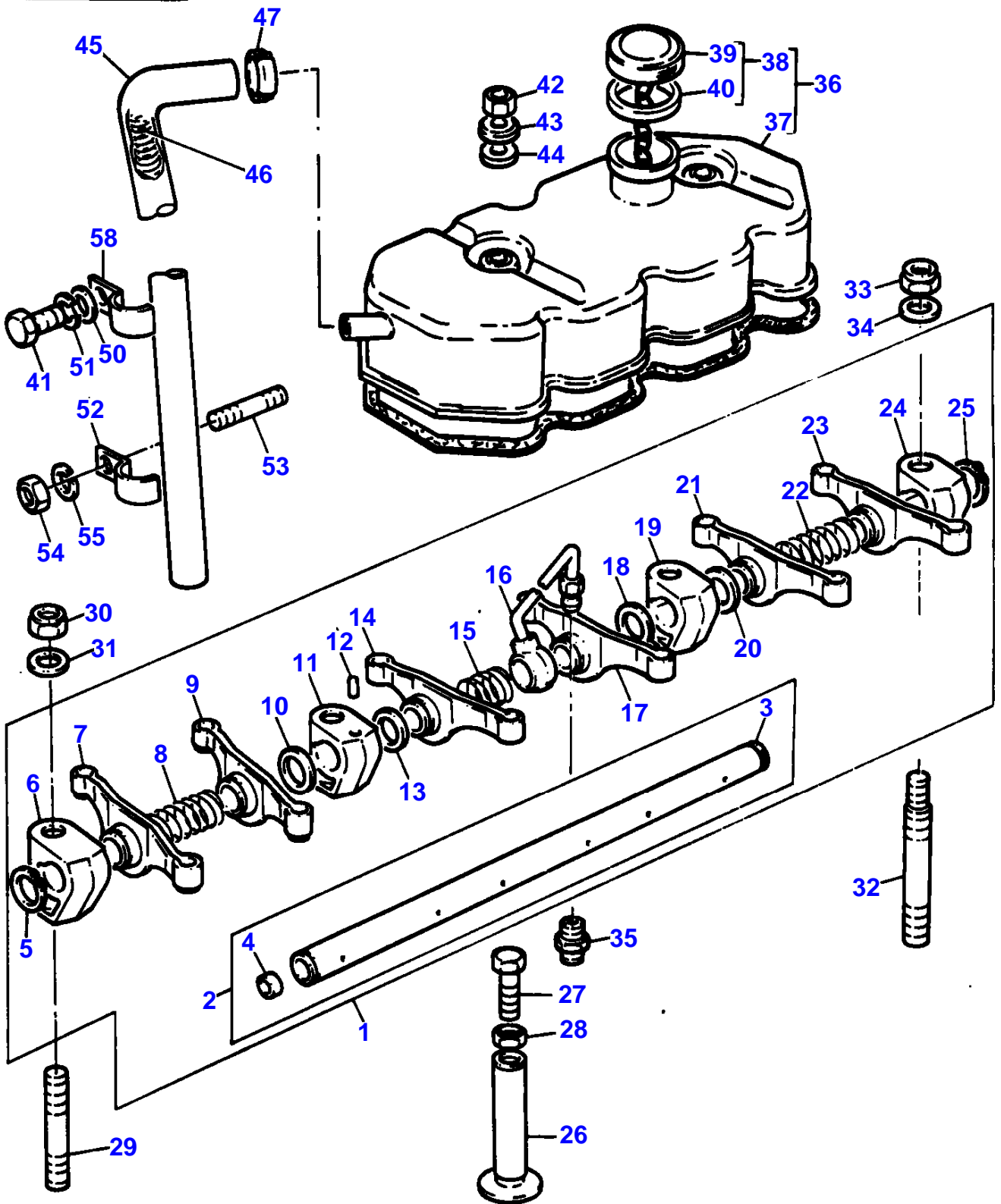


Item	Part Number	Qty	Description	Comments
				T3.152.4 ENGINE
1	ZZ 80113	1	Kit, Cyl. Head	
2		1	Cylinder Head	(1) Not serviced, order REF.1
3	2431154	2	Plug	(1)
4	3314A005	3	Insert	(1)
5	3142A081	3	Valve Exhaust	(1)
6	3313E011	3	Guide	(1)
7	33415133	3	Washer	(1)
8	0780006	3	Spring	(1)
9	33423148	3	Cap	(1)
10	0230001	6	Cotter	(1) (A)
11	31431121	3	Valve Inlet	(1)
12	2415258	3	Seal	(1)
13	3313E011	3	Guide	(1)
14	33177518	3	Washer	(1)
15	0780006	3	Spring	(1)
16	33423148	3	Cap	(1)
17	0230001	6	Cotter	(1) (A)
18	3624V004	1	Plate	
19		2	Stud	See Page - Reference Number 13/10
20		2	Nut	See Page - Reference Number 13/11
21		2	Washer	(B)
22	3645T003	1	Plate	
23	3611E003	1	Spacer	
24	2216165	2	Stud	
25	0576051	2	Nut	
26	0920054	2	Washer	
27	3612M002	1	Plate	
28	0490485	1	Joint	
29	0746254	6	Setscrew	
30	0920053	6	Washer	
31	3771K072	1	Therm. Housing	Repairs and replaces 3771K071
32	3685A004	1	Joint	
33	2431A054	1	Plug	
34	0650203	1	Plug	
35	2411157	1	Washer	
36	0096213	2	Bolt	
37	0920053	2	Washer	
38	0096442	1	Bolt	
39	0920054	1	Washer	
40	2215179	1	Stud	
41	0576051	1	Nut	
42	0920054	1	Washer	
43	2217072	1	Stud	
44	0576002	1	Nut	
45	0920053	1	Washer	
46	32524132	1	Stud	
47	33221329	1	Nut	
48	32524148	3	Stud	
49	33221329	3	Nut	
50	32181457	5	Screw	
51	32181458	9	Screw	
52	2485613	1	Thermostat	
53	3764A041	1	Connection	
54	0490184	1	Joint	
55	0096433	2	Bolt	
56	0920054	2	Washer	

(A)
SERVICED IN PAIRS

(B)
NOT REQUIRED FOR THIS APPLICATION

C-0569-09M-A



Buy Now



Our support email:

ebooklibonline@outlook.com