

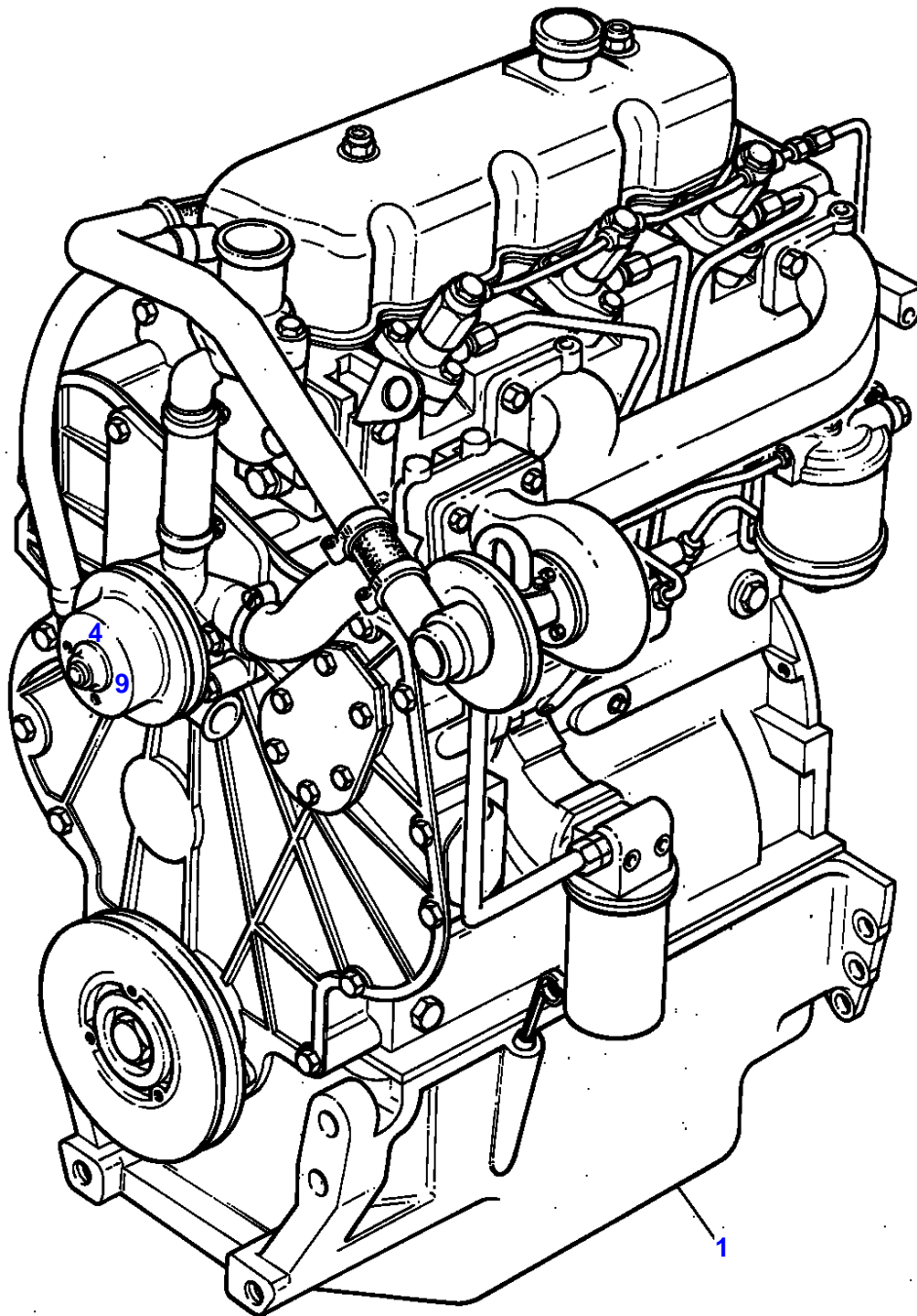
Page Title	Page Number
ENGINE - T3.152.4 ENGINE	1
CYLINDER BLOCK - T3.152.4 ENGINE	2
CRANKSHAFT, PISTONS AND CONNECTING RODS - T3.152.4 ENGINE	3
CYLINDER HEAD - T3.152.4 ENGINE	4
ROCKER SHAFT - T3.152.4 ENGINE	5
TIMING GEAR AND CAMSHAFT - T3.152.4 ENGINE	6
FUEL INJECTION EQUIPMENT (DIESEL) - T3.152.4 ENGINE	7
LUBRICATING OIL SUMP - T3.152.4 ENGINE	8
LUBRICATING OIL FILTER AND INTEGRAL COOLER - T3.152.4 ENGINE	9
WATER PUMP, THERMOSTAT AND HEAT EXCHANGER - T3.152.4 ENGINE	10
LOW PRESSURE FUEL SYSTEM - T3.152.4 ENGINE	11
TURBOCHARGER - T3.152.4 ENGINE	12
TURBOCHARGER-INLET AND EXHAUST MANIFOLD - T3.152.4 ENGINE	13
TURBOCHARGER-PIPES AND HEAT SHIELDS - T3.152.4 ENGINE	14
ALTERNATOR POSITIONER - T3.152.4 ENGINE	15
JOINTS AND GASKETS - T3.152.4 ENGINE	16
ACCESSORIES - JUNCTION HOURMETER	17
ALTERNATOR - VALEO TYPE	18
ALTERNATOR-LUCAS	19
STARTER MOTOR	20
COOLING SYSTEM-ENGINE - FAN AND HOSES	21
COOLING SYSTEM - RADIATOR AND BRACKET	22
FUEL SYSTEM-FUEL FILTER	23
FUEL SYSTEM-FUEL FILTER	24
FUEL SYSTEM-FUEL TANK AND ATTACHMENTS	25
AIR FILTER-OIL BATH AIR FILTER	26
EXHAUST SYSTEM-VERTICAL	27
EXHAUST SYSTEM-VERTICAL	28
THROTTLE CONTROLS	29
SENSORS HARNESS	30
BATTERY	31
INSTRUMENT PANEL AND INSTRUMENTS	32
ELECTRONIC HARNESS-INSTRUMENT PANEL	33
SINGLE CLUTCH - P.&V. - 10	34
SINGLE CLUTCH - B.&B. - 10	35
CLUTCH-DUAL CLUTCH - LUK - 11	36
CLUTCH-DUAL CLUTCH - O.M.G. - 11	37
CLUTCH CONTROL - NORMAL	38
CLUTCH CONTROL - WITH DUAL CLUTCH	39
CLUTCH CONTROL - CLUTCH SHAFT BRAKING SISTEM	40
CENTRE AXLE HOUSING AND TRANSMISSION HOUSING	41
TRANSMISSION-GEAR TRAIN	42
TRANSMISSION-GEAR TRAIN	43
SHIFT LEVERS-12 SPEED TRANSMISSION	44
PTO SHAFT - STANDARD	45
PTO SHAFT - 540/750/1000 R.P.M.	46
REAR AXLE-HOUSING - FINAL DRIVE	47
BRAKE AND CONTROLS	48
BRAKES-HANDBRAKE	49
STEERING CLUTCH	50
TRACK ADJUSTER	51
TRACK CHAIN - TRACK CHAIN	52
SUSPENSION - FRONT - REAR	53
SUSPENSION - TRACK CARRIER	54
UPPER ROLLER - UPPER TRACK ROLLER	55
LOWER ROLLER	56
HYDRAULIC LIFT PIPINGS	57
HYDRAULIC PUMP - HYDRAULIC LIFT	58
HYDRAULIC LIFT VALVE	59
HYDRAULIC LIFT-LIFT ARMS	60
REAR CONTROLS-DRAFT AND POSITION	61
REAR CONTROLS-DRAFT AND POSITION	62
AUXILIARY HYDRAULIC VALVE LINES	63
AUXILIARY HYDRAULICS VALVE - STANDARD	64
AUXILIARY HYDRAULICS VALVE - FLOATING	65
HYDRAULICS EQUIPMENT-VALVE	66

TABLE OF CONTENT

00

LIFT HITCH - WITH THREE POINT LINKAGE CAT 1	67
LINKAGE CAT 2	68
HOOD AND GRILLE	69
SHEET METAL-PANELS - BRACKETS AND ASSEMBLING PARTS	70
DECALS	71
FENDERS AND PLATFORM	72
GUARDS - TRACK ROLLERS GUARDS	73
SAFETY FRAME	74
SEAT-SABLE - STANDARD	75
SEAT-SABLE - LUX TYPE	76
LIGHTING EQUIPMENT-REAR	77
ELECTRICAL WIRING - NEUTRAL SAFETY STARTING AND STOP	78
LIGHTING EQUIPMENT	79
WEIGHT FRAME AND WEIGHTS - FRONT HOOK	80
REAR HOOK-ADJUSTABLE - FOR ITALY	81
DRAWBAR	82
TOOL KIT	83

C-0011-16M-A



MASSEY FERGUSON

MF 364 CF CRAWLER - 3311688

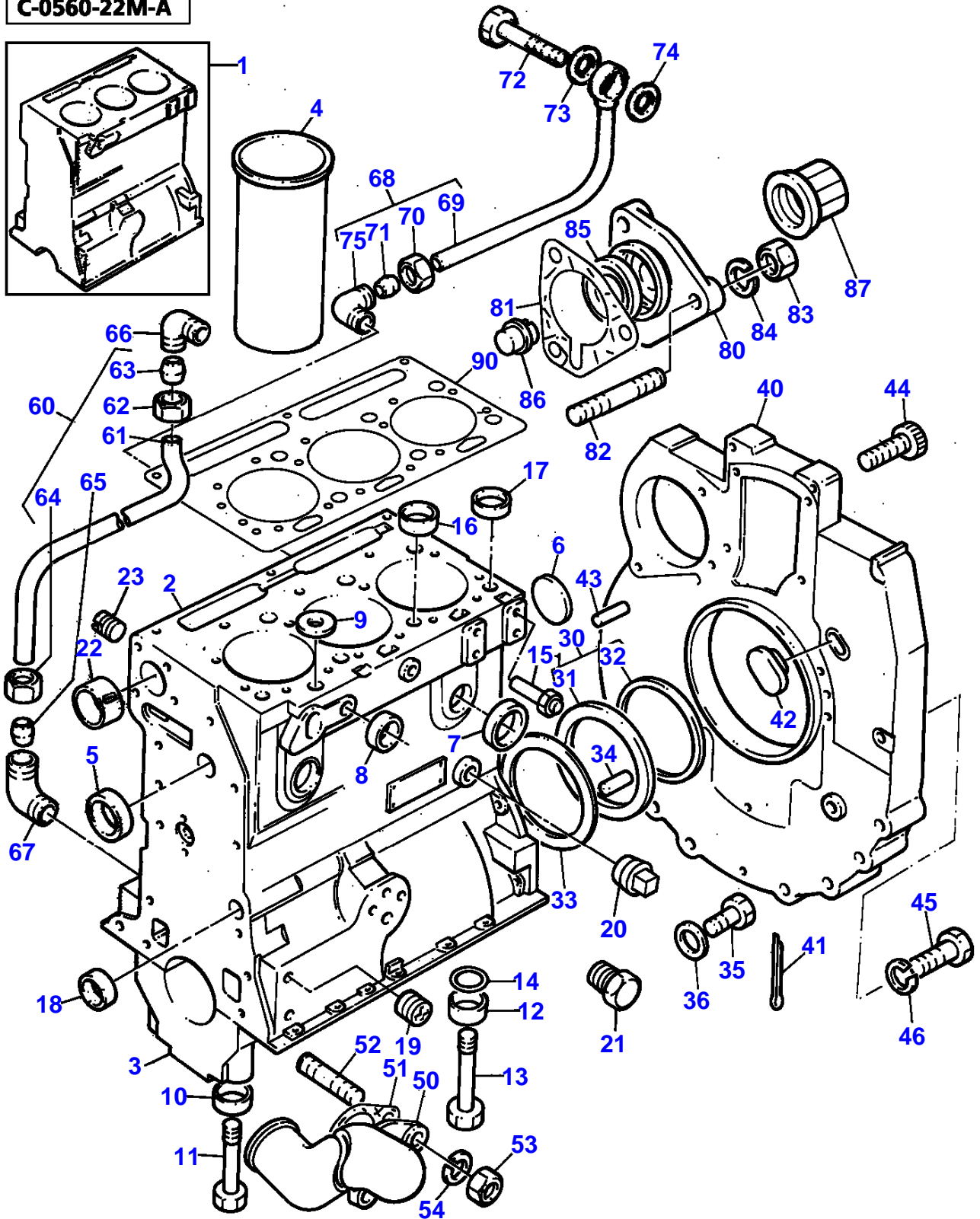
3311688

ENGINE - T3.152.4 ENGINE

1

Description	Comments
	T3.152.4 ENGINE

C-0560-22M-A



Thank you so much for reading.
Please click the “Buy Now!”
button below to download the
complete manual.



After you pay.

You can download the most
perfect and complete manual in
the world immediately.

Our support email:

ebooklibonline@outlook.com