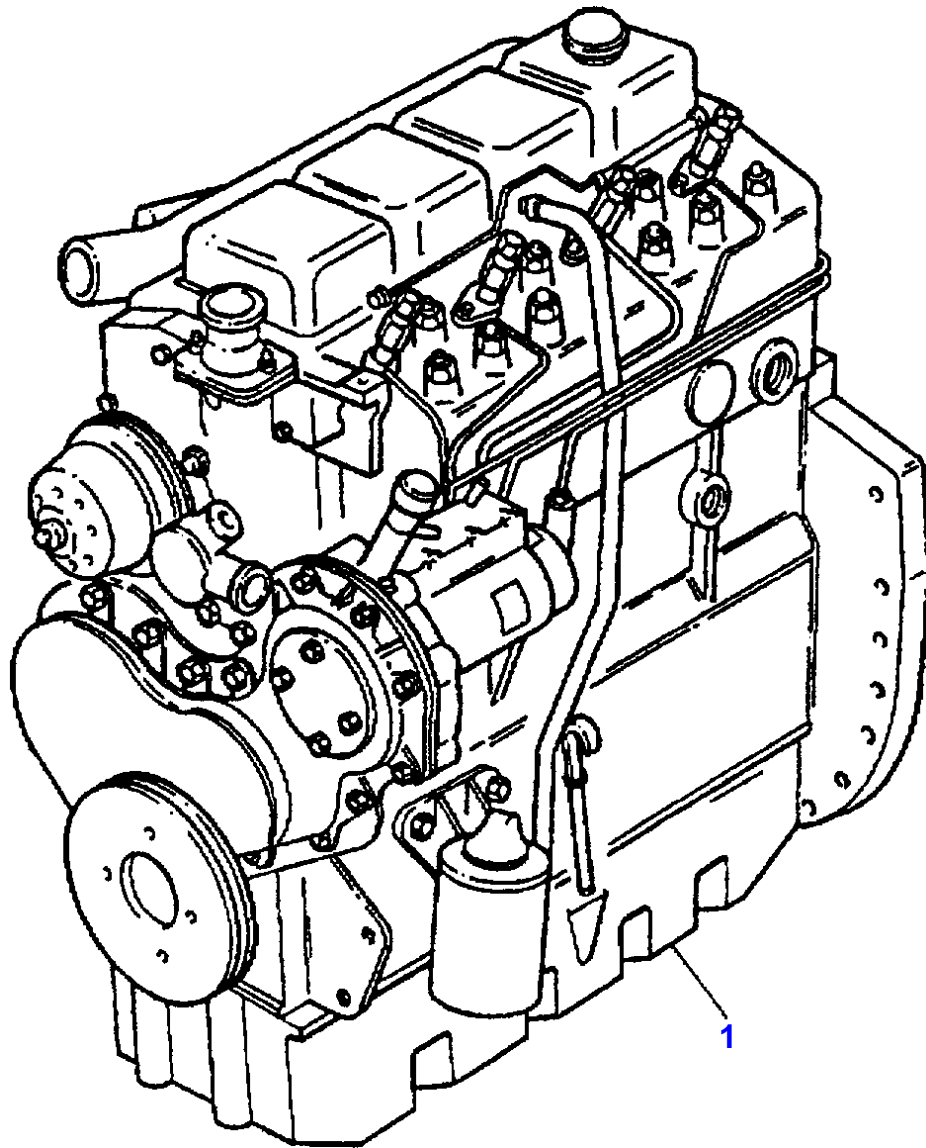


Page Title	Page Number
ENGINE ASSEMBLY-A4.236 ENGINE	1
SHORT ENGINE-A4.236 ENGINE	2
CYLINDER BLOCK-A4.236 ENGINE	3
CRANKSHAFT, PISTONS AND CONNECTING RODS-A4.236 ENGINE	4
CYLINDER HEAD-A4.236 ENGINE	5
ROCKER SHAFT-A4.236 ENGINE	6
TIMING GEAR AND CAMSHAFT-A4.236 ENGINE	7
BALANCER UNIT-A4.236 ENGINE	8
FUEL INJECTION EQUIPMENT-A4.236 ENGINE	9
LUBRICATING OIL SUMP-A4.236 ENGINE	10
LUBRICATING OIL FILTER AND INTEGRAL COOLER-A4.236 ENGINE	11
WATER PUMP, THERMOSTAT AND HEAT EXCHANGER-A4.236 ENGINE	12
FUEL SYSTEM AND FILTER-A4.236 ENGINE	13
AIR INDUCTION AND EXHAUST SYSTEM-A4.236 ENGINE	14
ALTERNATOR POSITIONER-A4.236 ENGINE	15
JOINTS AND GASKETS-A4.236 ENGINE	16
ALTERNATOR-LUCAS	17
ALTERNATOR-VALEO TYPE	18
ALTERNATOR-ISKRA TYPE	19
STARTER MOTOR-MARELLI	20
STARTER MOTOR-ISKRA TYPE	21
STARTER MOTOR-BOSCH	22
COOLING SYSTEM-FAN AND HOSES	23
COOLING SYSTEM-RADIATOR AND BRACKET	24
FUEL SYSTEM	25
FUEL TANK-TANK STD	26
AIR FILTER	27
DRY AIR FILTER-DRY AIR CLEANER	28
EXHAUST SYSTEM	29
THROTTLE CONTROLS	30
INSTRUMENT PANEL-CENTRAL ELECTRICAL EQUIPEMENT.	31
INSTRUMENT PANEL-POINTERS	32
BATTERY BATTERY CASE	33
ELECTRONIC HARNESS-CENTRAL ELECTRICAL EQUIPEMENT.	34
ELECTRICAL WIRING-REAR	35
ELECTRICAL WIRING-REAR	36
SENSORS HARNESS-FRONT	37
LIGHTING EQUIPMENT-LIGHTS	38
CLUTCH-LUK - 11	39
CLUTCH-O.M.G. - 11	40
CLUTCH-VALEO - 12	41
CLUTCH-LUK - 12	42
CLUTCH-O.M.G. - 12	43
CLUTCH PEDAL AND LINKAGE	44
CLUTCH PEDAL AND LINKAGE-CLUTCH SHAFT BRAKING SISTEM WITH STANDARD TRAN	45
CLUTCH PEDAL AND LINKAGE-CLUTCH SHAFT BRAKING SISTEM WITH SHUTTLE VERSI	46
CENTRE AXLE HOUSING AND TRANSMISSION HOUSING	47
CENTRE AXLE HOUSING AND TRANSMISSION HOUSING	48
TRANSFER GEAR BOX-CONTROL COVER	49
TRANSMISSION	50
TRANSMISSION	51
TRANSMISSION CONTROL-DRIVING LEVER AND COVER HOUSING	52
TRANSMISSION CONTROL-STANDARD VERSION	53
TRANSMISSION-SHUTTLE AND CREEPER VERSION	54
REDUCER CONTROL OPZIONS-SHUTTLE AND CREEPER VERSION	55
TRANSMISSION CONTROL-SHUTTLE AND CREEPER VERSION	56
TRANSMISSION-OVERDRIVE AND SHUTTLE VERSION	57
REDUCER CONTROL OPZIONS-OVERDRIVE AND SHUTTLE VERSION	58
TRANSMISSION CONTROL-OVERDRIVE AND SHUTTLE VERSION	59
PTO SHAFT-STANDARD TYPE	60
PTO SHAFT-540/750/1000 R.P.M.	61
REAR AXLE	62
BRAKE AND CONTROLS	63
BRAKE AND CONTROLS	64
STEERING CLUTCH	65
STEERING CLUTCH-PIPINGS	66

TABLE OF CONTENT

STEERING CLUTCH	67
STEERING CLUTCH-DRIVING LEVER	68
STEERING CLUTCH-PIPINGS	69
ACCESSORIES MISCELLANEOUS	70
BRAKES	71
TRACK ADJUSTER	72
TRACK CHAIN-TRACK CHAIN	73
SUSPENSION TRACK CHAIN-FRONT - REAR	74
SUSPENSION TRACK CHAIN-TRACK CARRIER	75
UPPER ROLLER	76
LOWER ROLLER	77
HYDRAULIC EQUIPMENT	78
HYDRAULIC EQUIPMENT-HEAT EXCHANGER	79
HYDRAULIC PUMP-BOSCH	80
HYDRAULIC PUMP-TUROLLA	81
HYDRAULIC LIFT VALVE	82
HYDRAULIC LIFT	83
HYDRAULIC LIFT	84
MECHANICAL CONTROL LIFT	85
MECHANICAL CONTROL LIFT	86
HYDRAULIC INSTALLATION-AUXILIARY-WITH AUXILIARY PUMP	87
HYDRAULIC INSTALLATION-AUXILIARY-WITH AUXILIARY PUMP	88
HYDRAULIC PUMP	89
AUXILIARY HYDRAULIC VALVE LINES-OMC TYPE UP TO SERIAL NO. C07070	90
AUXILIARY HYDRAULIC VALVE LINES-2 OR 3 DISTRIBUTORS	91
AUXILIARY HYDRAULIC VALVE LINES-WITH 4 OR 5 DISTRIBUTORES	92
CONTROL VALVE-O.M.C. TYPE	93
AUXILIARY HYDRAULICS VALVE-STANDARD TYPE	94
AUXILIARY HYDRAULICS VALVE-FLOATING	95
AUXILIARY HYDRAULIC VALVE LINES-FROM SERIAL NO. C07071	96
AUXILIARY HYDRAULIC VALVE LINES-2 OR 3 DISTRIBUTORS	97
AUXILIARY HYDRAULIC VALVE LINES-WITH 4 OR 5 DISTRIBUTORES	98
CONTROL VALVE-HIDROIRMA TYPE.	99
AUXILIARY HYDRAULICS VALVE STANDARD-HIDROIRMA TYPE.	100
AUXILIARY HYDRAULICS FLOATING-HIDROIRMA TYPE.	101
LINKAGE	102
SHEET METAL-UP TO SERIAL NUMBER B08111	103
SHEET METAL-FROM SERIAL NO. B08112	104
SHEET METAL-UP TO SERIAL NUMBER B08111	105
SHEET METAL-FROM SERIAL NO. B08112	106
SHEET METAL-BRACKETS AND ASSEMBLING PARTS	107
DECALS	108
DECALS	109
SUPPORTS PLATFORM	110
PLATFORM WITHOUT PILLARS	111
GUARDS-TRACK ROLLERS GUARDS	112
REAR SHEET METAL	113
SAFETY FRAME	114
SEAT-STANDARD TYPE	115
SEAT-LUX TYPE	116
SEAT-STANDARD VERSION	117
SEAT-LUX TYPE	118
WEIGHT FRAME AND WEIGHTS W-FRONT HOOK	119
REAR HOOK-FOR ITALY	120
DRAWBAR-	121
TOOL KIT-	122



MASSEY FERGUSON

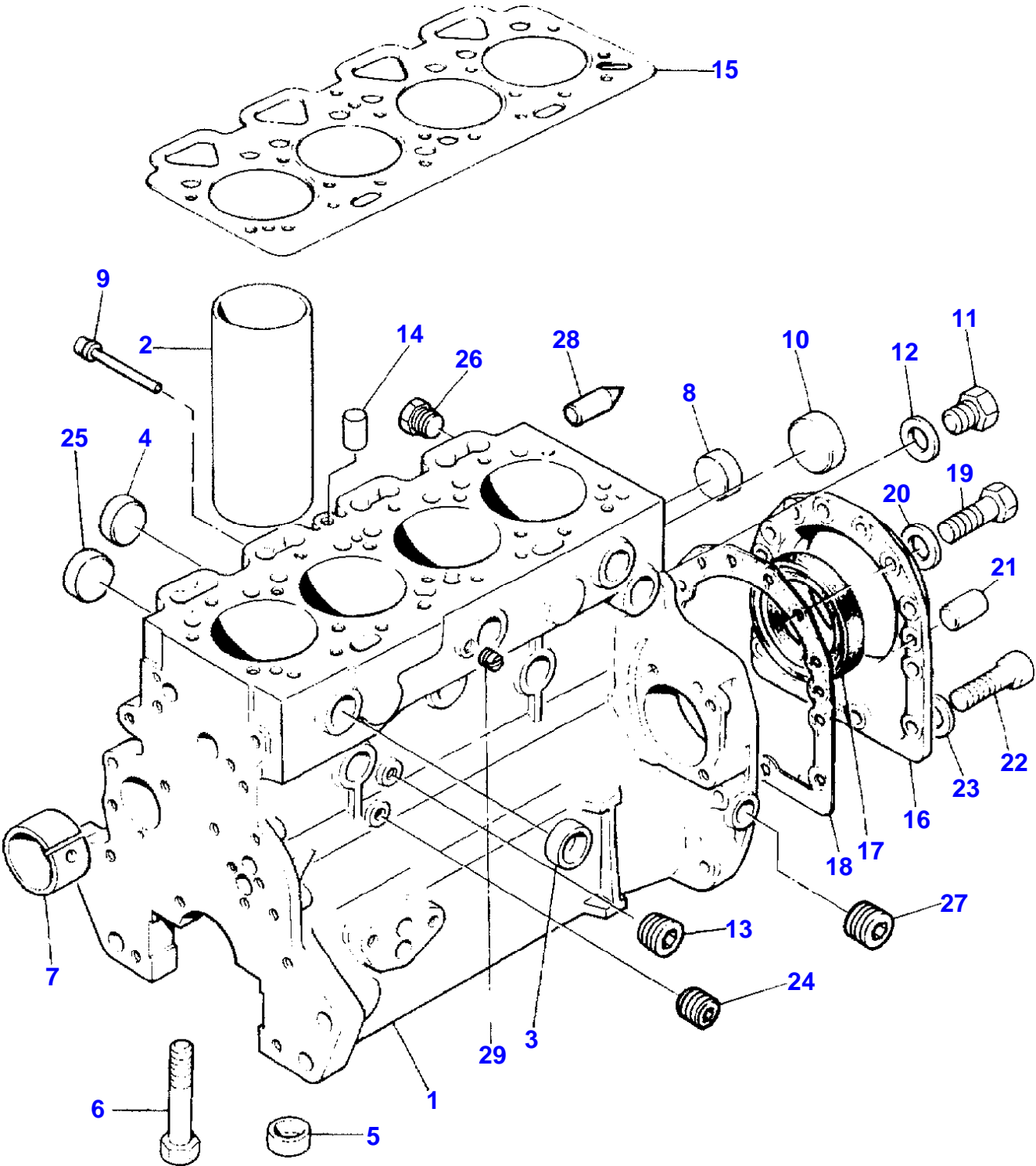
MF 376 C CRAWLER - 3311793

3311793

ENGINE ASSEMBLY-A4.236 ENGINE

1

Item	Part Number	Qty	Description	Comments
1	3553122M91	1	Engine	"LD31200" PK



MASSEY FERGUSON

MF 376 C CRAWLER - 3311793

3311793

CYLINDER BLOCK-A4.236 ENGINE

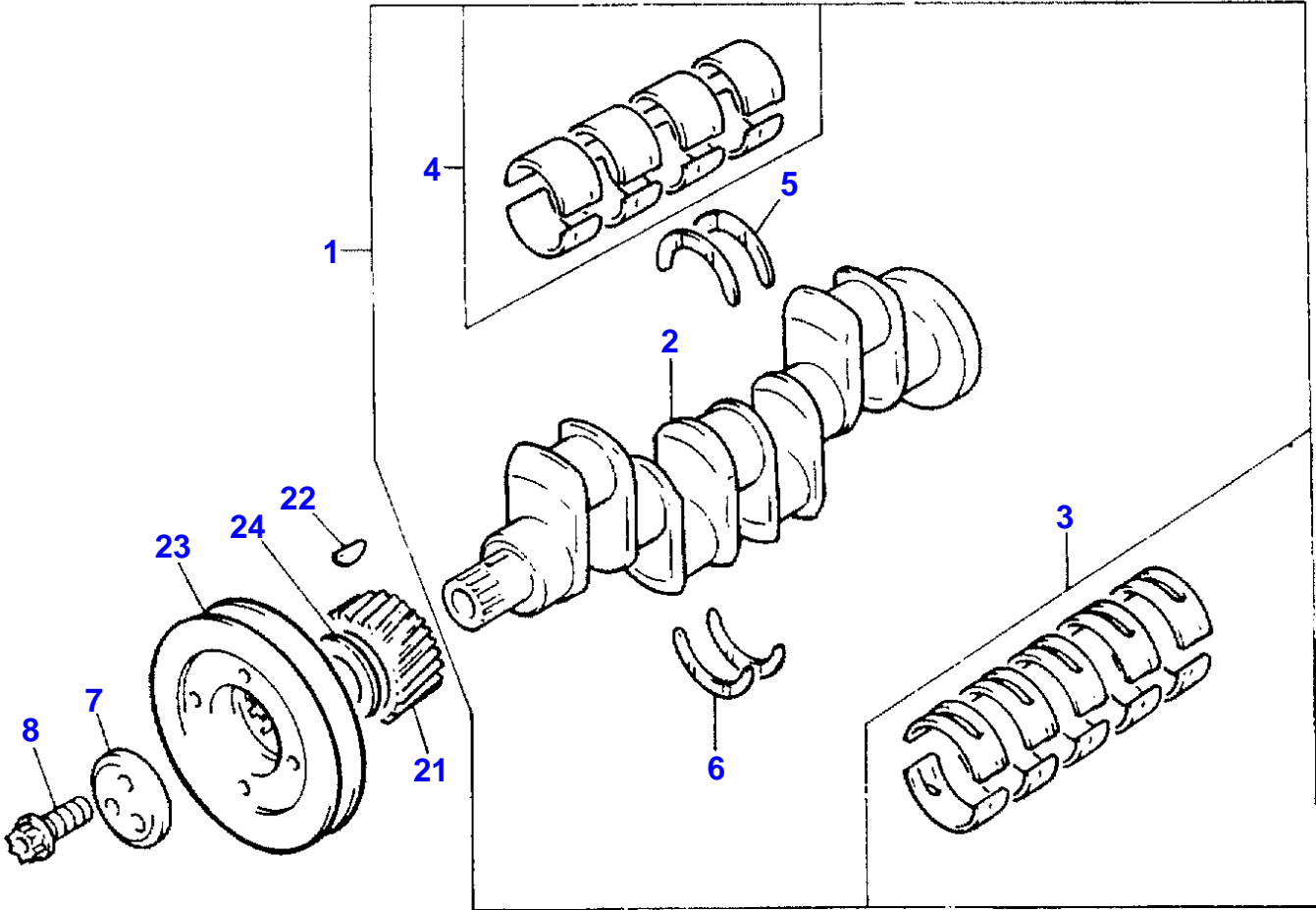
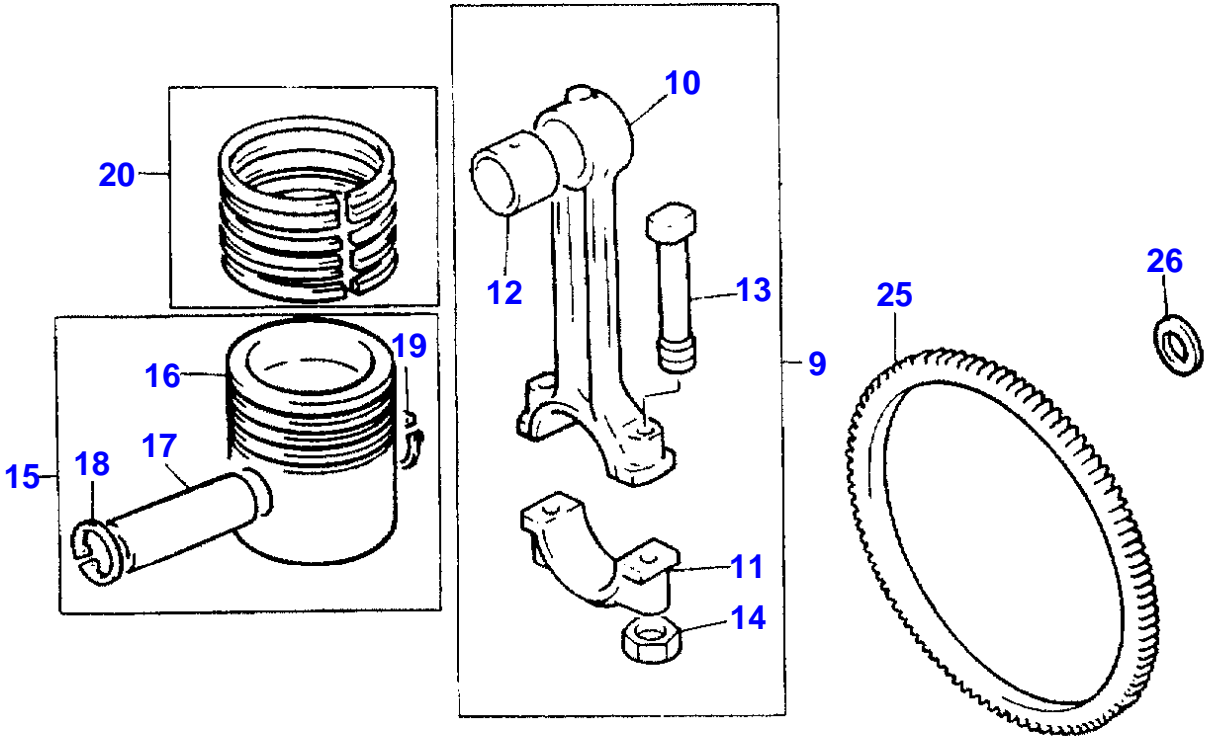
3

Item	Part Number	Qty	Description	Comments
1	ZZ50226	1	KIT	
2	3135X031	4	Liner	[A, X] (1) . 4. 8. 16
2	3135X032	1	Liner	[B, X] . 4. 4. 8
3	0650710	6	Plug	(1)
4	32418122	4	Plug	(1)
5	33142111	10	Thimble	(1)
6	32166329	10	Bolt	(1)
7	31134165	1	BUSH	(1)
8	0650710	2	Plug	(1)
9	2485A204	1	Plug	(1)
10	32416119	1	PLUG	(1)
11	32168212	1	PLUG	(1)
12	3311R003	1	Washer	(1)
13	0650588	2	Plug	(1)
14	32417134	1	Plug	
15	3681E034	1	GASKET	[X] . 1. 2. 4
16	4142V066	1	FLANGE	
17	2418F475	1	Seal	[X] (16) . 1. 2. 4
18	3681T012	1	GASKET	
19	0746211	12	Bolt	
20	390972X1	12	Washer Metric	
21	0350009	2	Dowel	
22	2172530	2	Capscrew	
23	33112111	2	Washer	
24	0650594	1	Plug	
25	32416118	4	PLUG	
26	32161114	2	Plug	
27	0650588	1	Plug	
28	32452113	1	Pointer	
29	32114143	1	Plug	

[A]
PRESS FIT

[B]
SLIP FIT

[X]
QTY PER TRACTORS SOLD (AA.BBB.CCC.DDD) (AA) FOR 1 ,(BBB) 2-10 (CCC)
11-25 (DDD) 26-50



CRANKSHAFT, PISTONS AND CONNECTING RODS-A4.236 ENGINE

Item	Part Number	Qty	Description	Comments
1	ZZ90081	1	Kit, Crankshaft	[X] . 0. 0. 1
2		1		(1) Not serviced, order REF.1
3	81558	1	Kit, Bearing	[A, X] (1) . 1. 2. 3
3	81558A	X	Kit, Bearing	[A] Thickness (-)0.25MM Thickness (-)0.010
3	81558B	X	Kit, Bearing	[A] Thickness (-)0.50MM Thickness (-)0.020
3	81558C	X	Kit, Bearing	[A] Thickness (-)0.75MM Thickness (-)0.030
4	85042	1	Kit, Bearing	[A, X] (1) . 0. 1. 2
4	85042A	X	Kit, Bearing	[A] Thickness (-)0.25MM Thickness (-)0.010
4	85042B	X	Kit, Bearing	[A] Thickness (-)0.50MM Thickness (-)0.020
4	85042C	X	Kit, Bearing	[A] Thickness (-)0.75MM Thickness (-)0.030
5	31137551	2	Thrust Washer	[X] (1) . 0. 2. 4
5	31137312	X	Thrust Washer	Thickness (+)0.19MM Thickness (+)0.0075
6	31137561	2	Thrust Washer	[X] (1) . 0. 2. 4
6	31137322	X	Thrust Washer	[X] Thickness (+)0.19MM Thickness (+)0.0075 . 1. 2. 4
7	3242T001	1	Thrust Block	[D]
8	32186139	3	Screw	[D]
9	ZZ90009	4	Kit, Conrod	[X] . 0. 4. 8
10		1	CONROD	(9) Not serviced, order REF.9
11		1		(9) Not serviced, order REF.9
12	31134123	1	Bush	[X] (9) . 4. 8. 16
13	32762145	1	SCREW	[X] (9) . 4. 8. 16
14	33221328	1	Nut	[X] (9) . 4. 8. 16
15	U5LU0025	4	Kit, Piston	[B, X] . 4. 8. 16
15	U5LP0035	4	Kit, Piston	[C, X] . 4. 8. 16
16		1	PISTON	(15) Not serviced, order REF.15
17		1		(15) Not serviced, order REF.15
18	0170002	1	Circlip	(15)
19	0170002	1	Circlip	(15)
20	41158041	4	Kit, Piston Ring	[X] . 4. 8. 16
21	31171681	1	Gear,Crankshaft	[X] Number of teeth/spines 28 . 1. 2. 4
22	0500012	1	Woodruff Key	
23	31148798	1	Pulley,Crank	
24	33125416	1	Washer	[E]
25	3552228M1	1	CROWNWHEEL	Number of teeth/spines 115
26	33117127	6	Washer	

MASSEY FERGUSON

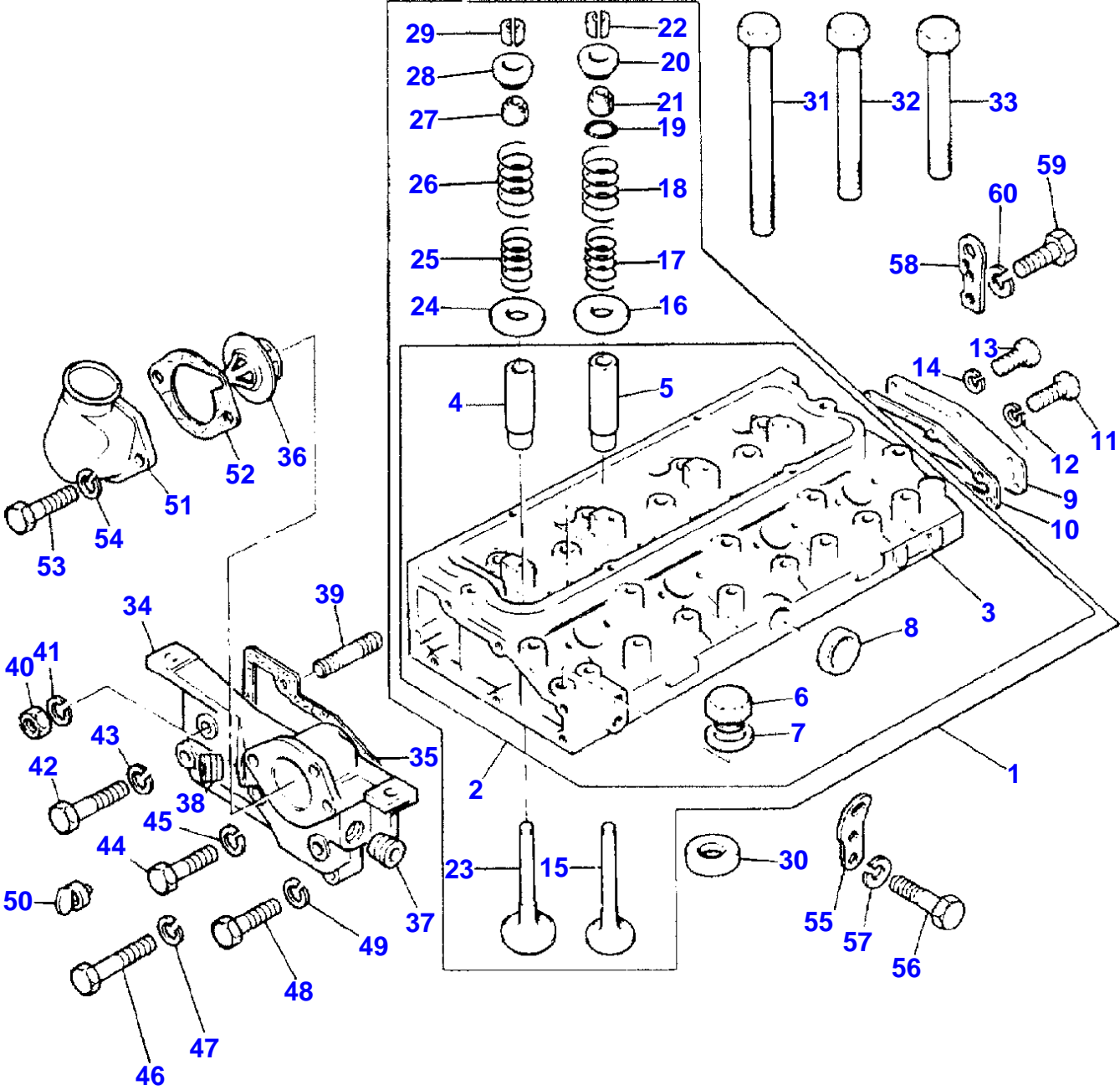
MF 376 C CRAWLER - 3311793

3311793

CRANKSHAFT, PISTONS AND CONNECTING RODS-A4.236 ENGINE

4

Item	Part Number	Qty	Description	Comments
				[A] PRE-FINISHED
				[C] PRE-TOPPED
				[B] UNTOPPED
				[X] QTY PER TRACTORS SOLD (AA.BBB.CCC.DDD) (AA) FOR 1 ,(BBB) 2-10 (CCC) 11-25 (DDD) 26-50
				[D] NOT SUPPLIED WITH ASSEMBLY
				[E] USED ONLY WITH 31148797



CYLINDER HEAD-A4.236 ENGINE

Item	Part Number	Qty	Description	Comments
1	ZZ80175	1	CYLINDER HEAD	[X] . 0. 0. 1
2	ZZ80176	1	CYLINDER HEAD	[F] (1) (2) Not serviced, order REF.2
3		1		
4	3343F031	4	GUIDE	[C, X] (2) . 0. 4. 8
5	3343F031	4	GUIDE	[C, X] (2) . 0. 4. 8
6	0650203	1	Plug	(2)
7	2411157	1	Washer	(2)
8	0650710	1	Plug	(2)
9	3623K007	1	Plate	
10	3687M018	1	GASKET	
11	0746452	2	Setscrew	
12	0920054	2	Washer	
13	2183205	4	Screw	
14	0920053	4	Washer	
15	31431881	4	Valve Exhaust	[D, G, X] Alternative 31431886 . 4. 8. 16
15	3142A052	4	Valve Exhaust	[C, H, X] (1) . 0. 4. 8
15	31431882	X	Valve Exhaust	[B, G, X] Thickness (+) 0,003 . 4. 8. 16
15	3142A053	X	Valve Exhaust	[B, H] Thickness (+) 0.003
15	31431883	X	Valve Exhaust	[B, G] Thickness (+) 0,015
15	3142A054	X	Valve Exhaust	[B, H] Thickness (+) 0,015
15	31431884	X	Valve Exhaust	[B, G] Thickness (+) 0,030
15	3142A055	X	Valve Exhaust	[B, H] Thickness (+) 0,030
16	33415118	4	Washer	[X] (1) . 4. 8. 16
17	31744131	4	Spring	[J, X] (1) . 4. 8. 16
17	31744133	4	Spring	[K] (1)
18	31745121	4	Spring	[J, X] (1) . 4. 8. 16
18	31745122	4	Spring	[K] (1)
19	2415B201	4	O Ring	[J, X] (1) . 4. 8. 16
20	33423147	4	Cap	[J, X] (1) . 4. 8. 16
20	33424107	4	Cap	[K] (1)
21	33817117	4	Seal	[X] (1) . 4. 8. 16
22	33173108	8	Cotter	[A, X] (1) . 4. 8. 16
23	31431641	4	Valve Inlet	[D, X] (1) . 0. 4. 8
23	31431315	4	Valve Inlet	[E] (1)
	31431401	X	Valve Inlet	[B, D, X] Thickness (+) 0.003 . 4. 8. 16
23	31431316	X	VALVE	[B, E] Thickness (+) 0.003
23	31431402	X	Valve Inlet	[B, D] Thickness (+) 0,015
23	31431317	X	VALVE	[B, E] Thickness (+) 0,015
23	31431403	X	Valve Inlet	[B, D] Thickness (+) 0,030
23	31431318	X	VALVE	[B, E]

CYLINDER HEAD-A4.236 ENGINE

Item	Part Number	Qty	Description	Comments
24	33415118	4	Washer	Thickness (+) 0,030 [X] (1) . 0. 4. 8
25	31744131	4	Spring	[J, X] (1) . 4. 8. 16
25	31744133	4	Spring	[K] (1)
26	31745121	4	Spring	[J, X] (1) . 0. 4. 8
26	31745122	4	Spring	[K] (1)
27	33817117	4	Seal	[X] (1) . 0. 4. 8
28	33423147	4	Cap	[J, X] (1) . 0. 4. 8
28	33424107	4	Cap	[K] (1)
29	33173108	8	Cotter	[A, X] (1) . 0. 4. 8
30	33152153	4	Insert	[X] (1) . 1. 2. 6
31	32166337	2	Screw	
32	32166338	12	Bolt	
33	32166339	8	Screw	
34	37762705	1	Body	
34	3545576M1	1	BODY	[B]
35	3685F005	1	GASKET	[X] . 2. 4. 8
36	2485659	1	Thermostat	[X] . 1. 2. 6
37	2431154	1	Plug	
38	2431154	1	Plug	
39	2217202	1	Stud	
40	2188135	1	Nut	
41	0920054	1	Washer	
42	0096238	1	Bolt	
43	0920053	1	Washer	
44	0096439	1	Bolt	
45	0920054	1	Washer	
46	2183205	2	Screw	
47	0920053	2	Washer	
48	0746459	2	SCREW	
49	0920054	2	Washer	
50	2485791	1	Pin	
51		1		[I]
52	36862225	1	GASKET	[X] . 2. 4. 16
53	0746458	2	SCREW	
54	0920054	2	Washer	
55	3648C004	1	Plate	
56	353537X1	2	Screw Unf	
57	0920054	2	Washer	
58	36177111	1	Plate	
59	353537X1	2	Screw Unf	
60	0920054	2	Washer	

[A]
SERVICED IN PAIRS
[X]
QTY PER TRACTORS SOLD (AA.BBB.CCC.DDD) (AA) FOR 1 ,(BBB) 2-10 (CCC)
11-25 (DDD) 26-50
[G]
USED ONLY WITH ZZ80015/ZZ80072 ..
[B]
WITH CONDITIONED AIR
[E]
USED ONLY WITH ZZ80062/ZZ80072 (CYLINDER HEAD)
[K]
USED ONLY WITH ZZ80072
[F]
MINOR ASSEMBLY
[C]
REMOVE AND FIT 31431881

Item Part Number Qty Description

Comments

[D]

FITTED IN PLACE OF EXHAUST VALVES SUPPLIED WITH CY LINDER HEAD ASSEMBLY

[I]

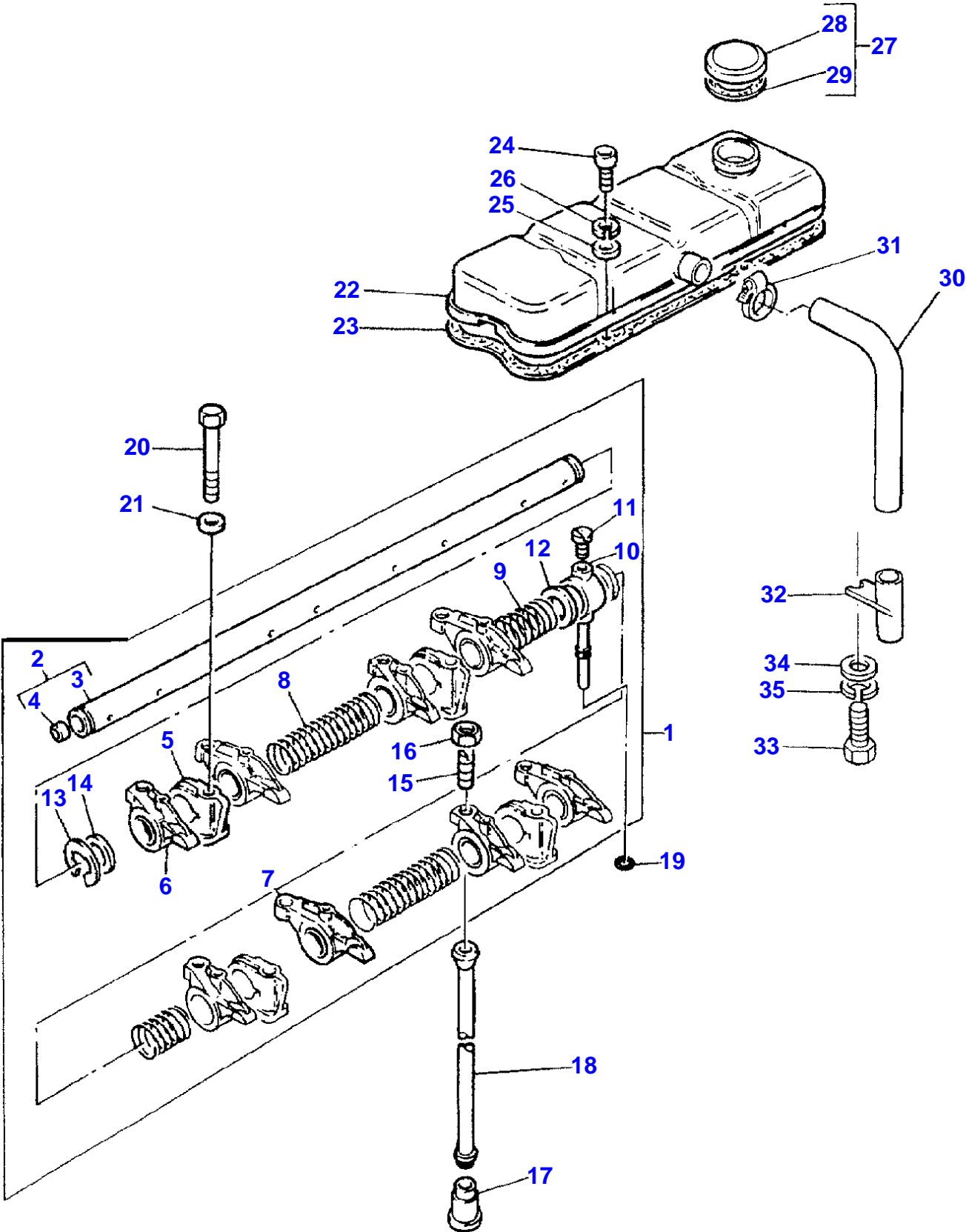
NOT SUPPLIED BY PERKINS ENGINES LIMITED.

[J]

USED ONLY WITH ZZ80015/ZZ80062

[H]

USED ONLY WITH ZZ80062



Buy Now



Our support email:

ebooklibonline@outlook.com