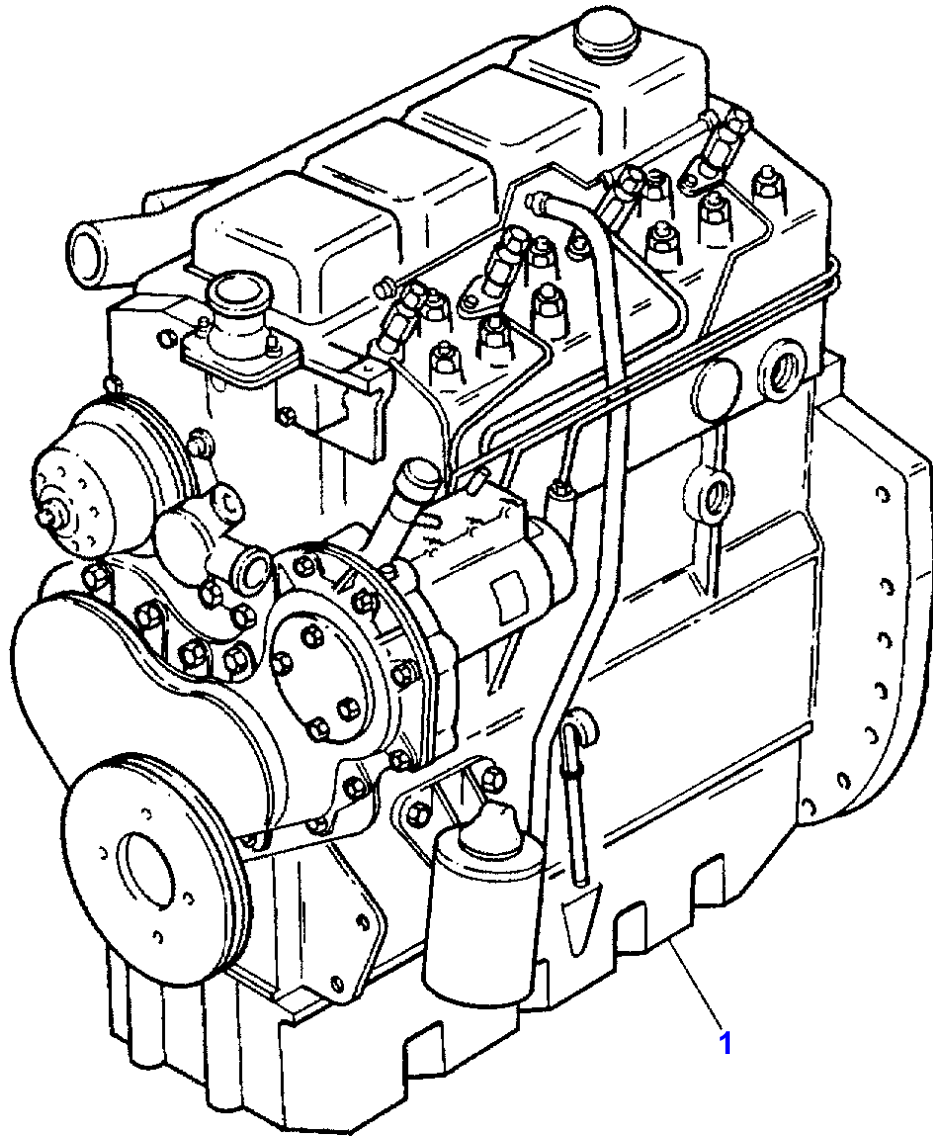


Page Title	Page Number
ENGINE ASSEMBLY-A4.248 ENGINE	1
SHORT ENGINE-TABLE PK ACEL9308	2
CYLINDER BLOCK-A4.248 ENGINE	3
CRANKSHAFT, PISTONS AND CONNECTING RODS-A4.248 ENGINE	4
CYLINDER HEAD-A4.248 ENGINE	5
ROCKER SHAFT-A4.248 ENGINE	6
TIMING GEAR AND CAMSHAFT-A4.248 ENGINE	7
BALANCER UNIT-A4.248 ENGINE	8
FUEL INJECTION EQUIPMENT-A4.248 ENGINE	9
LUBRICATING OIL SUMP-A4.248 ENGINE	10
LUBRICATING OIL FILTER AND INTEGRAL COOLER-A4.248 ENGINE	11
WATER PUMP, THERMOSTAT AND HEAT EXCHANGER-A4.248 ENGINE	12
FUEL SYSTEM AND FILTER-A4.248 ENGINE	13
AIR INDUCTION AND EXHAUST SYSTEM-A4.248 ENGINE	14
ALTERNATOR POSITIONER-A4.248 ENGINE	15
JOINTS AND GASKETS-A4.248 ENGINE	16
ALTERNATOR-LUCAS	17
ALTERNATOR-VALEO TYPE	18
ALTERNATOR-ISKRA TYPE	19
STARTER MOTOR-MARELLI	20
STARTER MOTOR-ISKRA TYPE	21
STARTER MOTOR-BOSCH	22
COOLING SYSTEM-FAN AND HOSES	23
COOLING SYSTEM-RADIATOR AND BRACKET	24
FUEL SYSTEM	25
FUEL TANK-TANK STD	26
AIR FILTER	27
DRY AIR FILTER-DRY AIR CLEANER	28
EXHAUST SYSTEM	29
THROTTLE CONTROLS	30
INSTRUMENT PANEL-CENTRAL ELECTRICAL EQUIPEMENT.	31
INSTRUMENT PANEL-POINTERS	32
BATTERY BATTERY CASE	33
ELECTRONIC HARNESS-CENTRAL ELECTRICAL EQUIPEMENT.	34
ELECTRICAL WIRING-REAR	35
ELECTRICAL WIRING-REAR	36
SENSORS HARNESS-FRONT	37
LIGHTING EQUIPMENT-LIGHTS	38
CLUTCH-VALEO - 12	39
CLUTCH-LUK - 12	40
CLUTCH-O.M.G. - 12	41
CLUTCH PEDAL AND LINKAGE	42
CLUTCH PEDAL AND LINKAGE-CLUTCH SHAFT BRAKING SISTEM WITH STANDARD TRAN	43
CLUTCH PEDAL AND LINKAGE-CLUTCH SHAFT BRAKING SISTEM WITH SHUTTLE VERSI	44
CENTRE AXLE HOUSING AND TRANSMISSION HOUSING	45
CENTRE AXLE HOUSING AND TRANSMISSION HOUSING	46
TRANSFER GEAR BOX-CONTROL COVER	47
TRANSMISSION	48
TRANSMISSION	49
TRANSMISSION CONTROL-DRIVING LEVER AND COVER HOUSING	50
TRANSMISSION CONTROL-STANDARD VERSION	51
TRANSMISSION-SHUTTLE AND CREEPER VERSION	52
REDUCER CONTROL OPZIONS-SHUTTLE AND CREEPER VERSION	53
TRANSMISSION CONTROL-SHUTTLE AND CREEPER VERSION	54
TRANSMISSION-OVERDRIVE AND SHUTTLE VERSION	55
REDUCER CONTROL OPZIONS-OVERDRIVE AND SHUTTLE VERSION	56
TRANSMISSION CONTROL-OVERDRIVE AND SHUTTLE VERSION	57
PTO SHAFT-STANDARD TYPE	58
PTO SHAFT-540/750/1000 R.P.M.	59
REAR AXLE	60
BRAKE AND CONTROLS	61
BRAKE AND CONTROLS	62
STEERING CLUTCH	63
STEERING CLUTCH-PIPINGS	64
STEERING CLUTCH	65
STEERING CLUTCH-DRIVING LEVER	66

TABLE OF CONTENT

STEERING CLUTCH-PIPING	67
ACCESSORIES MISCELLANEOUS	68
BRAKES	69
TRACK ADJUSTER	70
TRACK CHAIN-TRACK CHAIN	71
TRACK CHAIN-TRACK CHAIN WITH LUBRICATOR	72
SUSPENSION TRACK CHAIN-FRONT - REAR	73
SUSPENSION TRACK CHAIN-TRACK CARRIER	74
UPPER ROLLER	75
LOWER ROLLER	76
HYDRAULIC EQUIPMENT	77
HYDRAULIC EQUIPMENT-HEAT EXCHANGER	78
HYDRAULIC PUMP-BOSCH	79
HYDRAULIC PUMP-TUROLLA	80
HYDRAULIC LIFT VALVE	81
HYDRAULIC LIFT	82
HYDRAULIC LIFT	83
MECHANICAL CONTROL LIFT	84
MECHANICAL CONTROL LIFT	85
HYDRAULIC INSTALLATION-AUXILIARY-WITH AUXILIARY PUMP	86
HYDRAULIC INSTALLATION-AUXILIARY-WITH AUXILIARY PUMP	87
HYDRAULIC PUMP	88
AUXILIARY HYDRAULIC VALVE LINES-OMC TYPE UP TO SERIAL NO. C0700	89
AUXILIARY HYDRAULIC VALVE LINES-2 OR 3 DISTRIBUTORS	90
AUXILIARY HYDRAULIC VALVE LINES-WITH 4 OR 5 DISTRIBUTORES	91
CONTROL VALVE-O.M.C. TYPE	92
AUXILIARY HYDRAULICS VALVE-STANDARD TYPE	93
AUXILIARY HYDRAULICS VALVE-FLOATING	94
AUXILIARY HYDRAULIC VALVE LINES-FROM SERIAL NO. C0701	95
AUXILIARY HYDRAULIC VALVE LINES-2 OR 3 DISTRIBUTORS	96
AUXILIARY HYDRAULIC VALVE LINES-WITH 4 OR 5 DISTRIBUTORES	97
CONTROL VALVE-HIDROIRMA TYPE.	98
AUXILIARY HYDRAULICS VALVE STANDARD-HIDROIRMA TYPE.	99
AUXILIARY HYDRAULICS FLOATING-HIDROIRMA TYPE.	100
LINKAGE	101
SHEET METAL-UP TO SERIAL NUMBER B08111	102
SHEET METAL-FROM SERIAL NO. B08112	103
SHEET METAL-UP TO SERIAL NUMBER B08111	104
SHEET METAL-FROM SERIAL NO. B08112	105
SHEET METAL-BRACKETS AND ASSEMBLING PARTS	106
DECALS	107
DECALS	108
SUPPORTS PLATFORM	109
PLATFORM WITHOUT PILLARS	110
GUARDS-TRACK ROLLERS GUARDS	111
REAR SHEET METAL	112
SAFETY FRAME	113
SEAT-STANDARD TYPE	114
SEAT-LUX TYPE	115
SEAT-STANDARD VERSION	116
SEAT-LUX TYPE	117
WEIGHT FRAME AND WEIGHTS W-FRONT HOOK	118
REAR HOOK-FOR ITALY	119
DRAWBAR-	120
TOOL KIT-	121



MASSEY FERGUSON

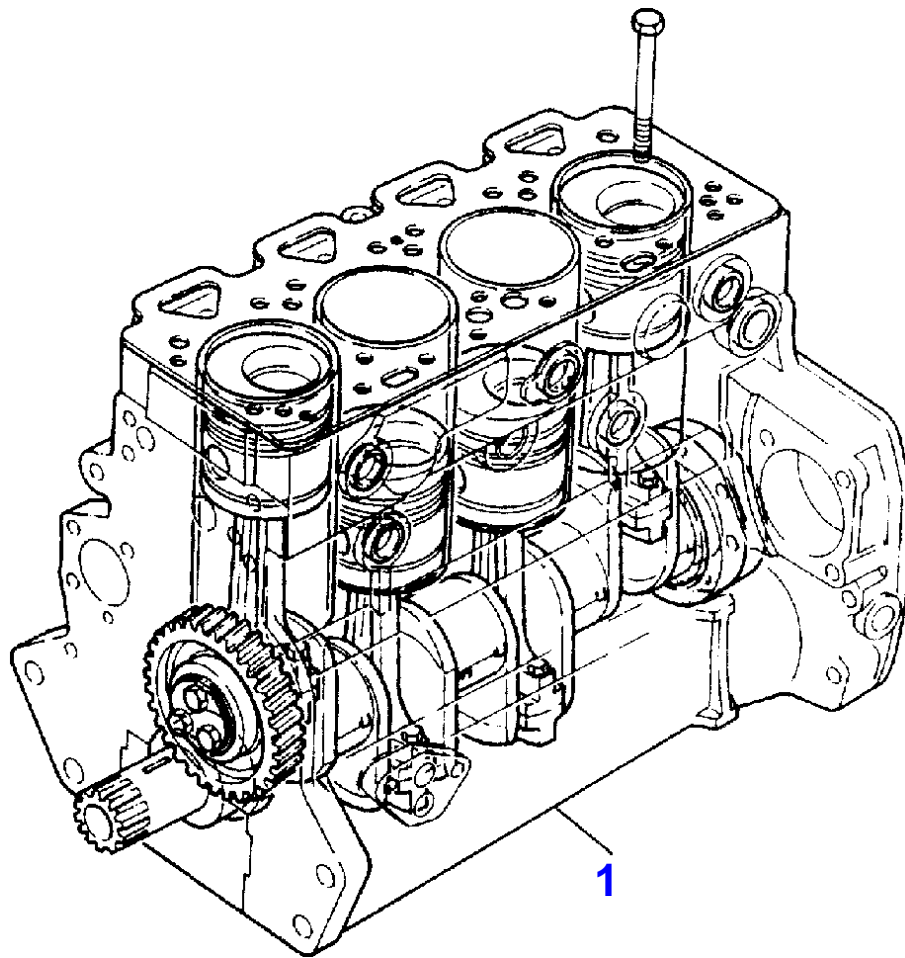
MF 396 C CRAWLER (IT) - 3311794

3311794

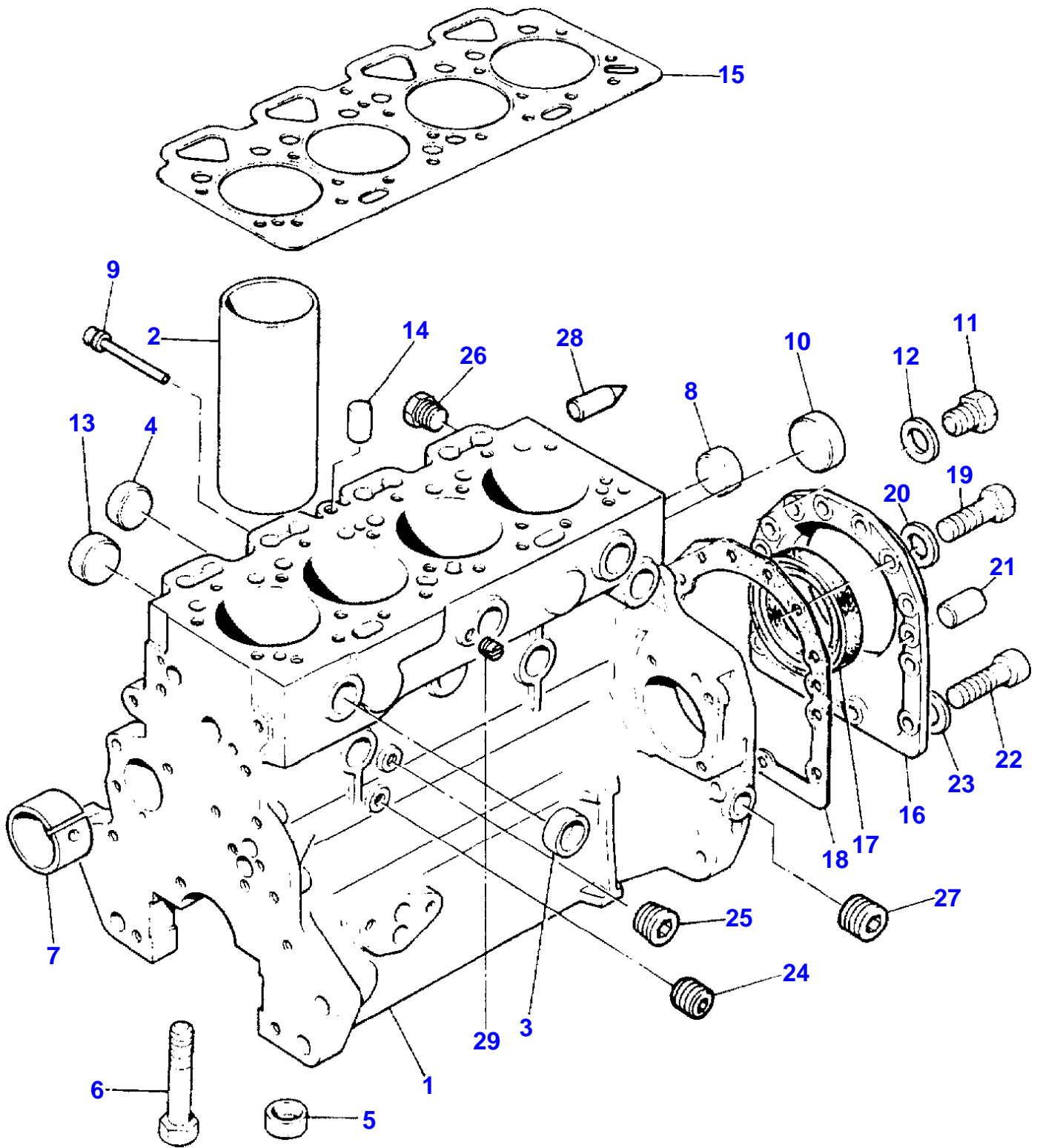
ENGINE ASSEMBLY-A4.248 ENGINE

1

Item	Part Number	Qty	Description	Comments
1	3553132M91	1	Engine	"LF31204"



Item	Part Number	Qty	Description	Comments
1	LF39335	1	SHORT ENGINE	
2		1		[A] (1)
		4		(1)
		1		(1)
		4		(1)
		4		(1)
		4		(1)
		10		(1)
		8		(1)
		4		(1)
		1		(1)
		1	HOUSING	(1)
		22		(1)
		1		(1)
				[A]
				COMPLETE WITH PLUGS



CYLINDER BLOCK-A4.248 ENGINE

Item	Part Number	Qty	Description	Comments
				[X] . 1. 2. 4
1	ZZ50227	1	Cylinder Block	
2	3135X033	4	Liner	[A, X] (1) . . 4. 8
2	3135X034	X	Liner	[B, X] . 4. 4. 8
3	0650710	6	Plug	(1)
4	32418122	4	Plug	(1)
5	33142111	10	Thimble	(1)
6	32166329	10	Bolt	(1)
7	31134165	1	BUSH	(1)
8	0650710	2	Plug	(1)
9	2485A204	1	Plug	(1)
10	32416119	1	PLUG	(1)
11	32168212	1	PLUG	(1)
12	3311R003	1	Washer	(1)
13	32416118	4	PLUG	(1)
14	32417134	1	Plug	(1)
15	3681E034	1	GASKET	[X] . 1. 2. 4
16	4142V064	1	Housing	
17	2418F475	1	Seal	[X] (16) . 1. 4. 8
18	3681T012	1	GASKET	
19	0746211	10	Bolt	
20	390972X1	10	Washer Metric	
21	0350009	2	Dowel	
22	2172530	2	Capscrew	
23	33112111	2	Washer	
24	0650594	1	Plug	
25	0650588	2	Plug	
26	32161114	2	Plug	
27	0650588	1	Plug	
28	32452113	1	Pointer	
29	32114143	1	Plug	

[A]

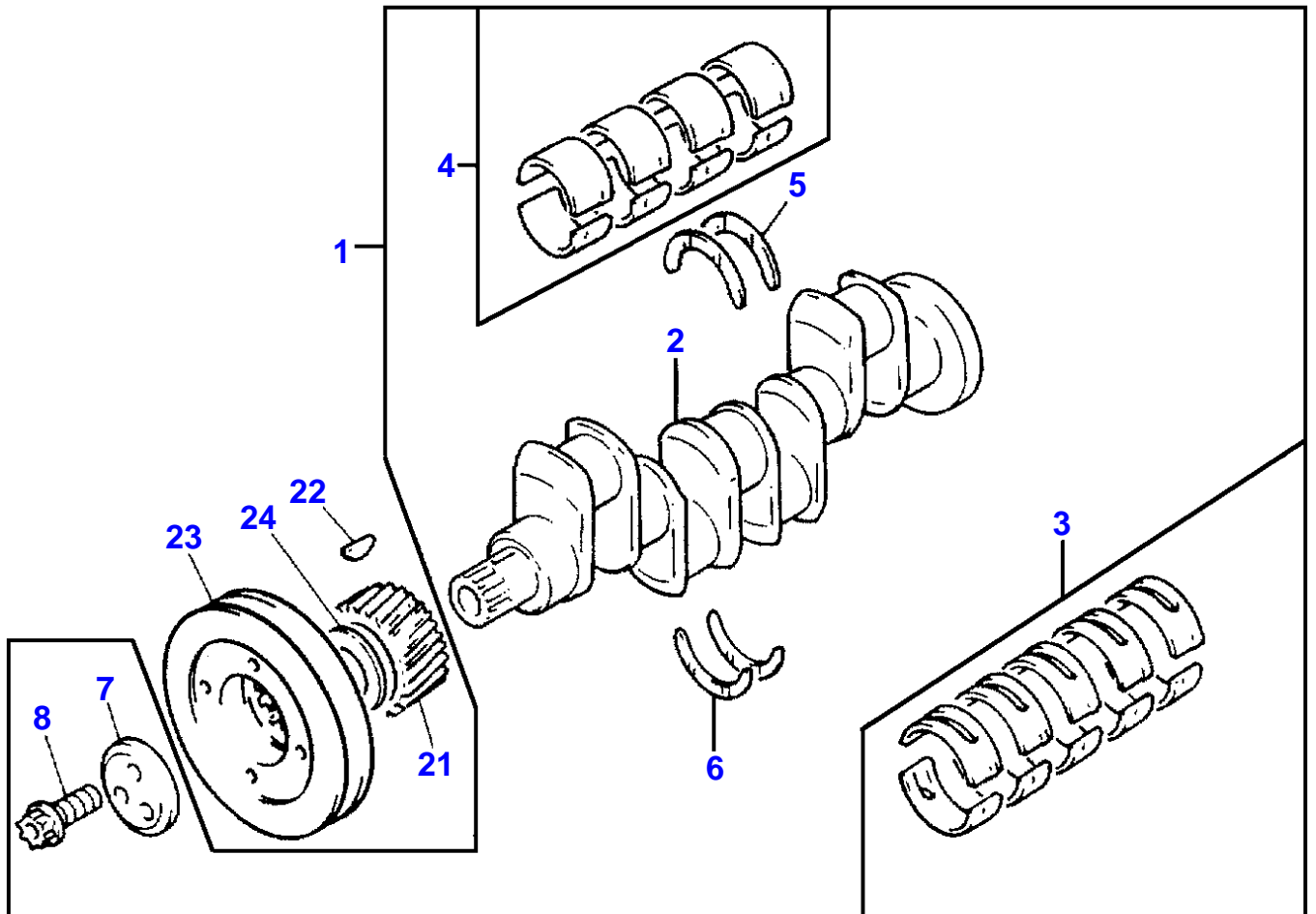
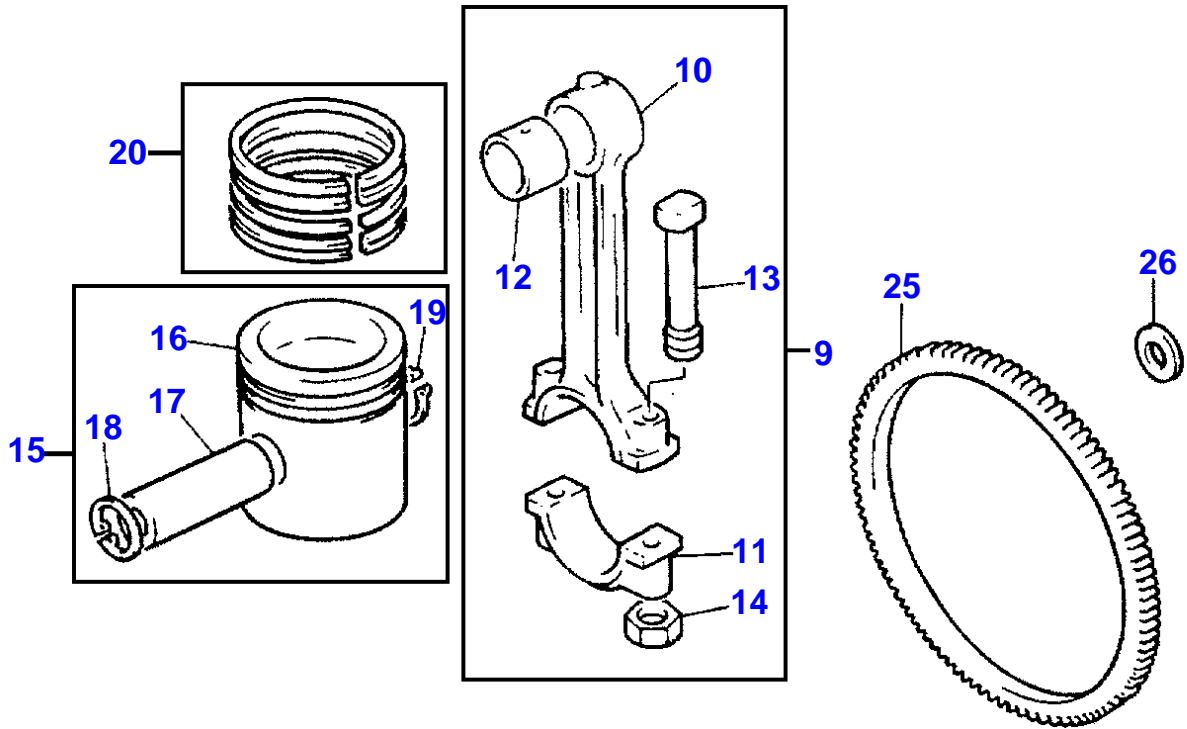
PRESS FIT

[B]

SLIP FIT

[X]

QTY PER TRACTORS SOLD (AA.BBB.CCC.DDD) (AA) FOR 1 ,(BBB) 2-10 (CCC)
11-25 (DDD) 26-50



CRANKSHAFT, PISTONS AND CONNECTING RODS-A4.248 ENGINE

Item	Part Number	Qty	Description	Comments
1	ZZ90081	1	Kit, Crankshaft	[X] . 0. 0. 1
2		1		[X] (1) Not serviced, order REF.1 . 0. 0. 1
3	81558	1	Kit, Bearing	[A, X] (1) . 0. 1. 2
3	81558A	X	Kit, Bearing	[A] Thickness (-)0.25MM Thickness (-)0.010
3	81558B	X	Kit, Bearing	[A] Thickness (-)0.50MM Thickness (-)0.020
3	81558C	X	Kit, Bearing	[A] Thickness (-)0.75MM Thickness (-)0.030
4	85042	1	Kit, Bearing	[A, X] (1) . . 1. 2
4	85042A	X	Kit, Bearing	[A] Thickness (-)0.25MM Thickness (-)0.010
4	85042B	X	Kit, Bearing	[A] Thickness (-)0.50MM Thickness (-)0.020
4	85042C	X	Kit, Bearing	[A] Thickness (-)0.75MM Thickness (-)0.030
5	31137551	2	Thrust Washer	[X] (1) . 0. 2. 4
5	31137312	X	Thrust Washer	Thickness (+)0.19MM Thickness (+)0.0075
6	31137561	2	Thrust Washer	[X] (1) . 0. 2. 4
6	31137322	X	Thrust Washer	Thickness (+)0.19MM Thickness (+)0.0075
7	3242T001	1	Thrust Block	[D]
8	32186139	3	Screw	[D]
9		4		[X] . 0. 4. 8
10		1	CONROD	[X] (9) Not serviced, order REF.9 . 0. 4. 8
11		1		(9) Not serviced, order REF.9
12	31134123	1	Bush	[X] (9) . 0. 4. 8
13	32762144	2	Bolt	[X] (9) . 0. 8. 16
14	33221328	2	Nut	[X] (9) . 0. 8. 16
15	U5LU0005	4	Kit, Piston	[B, X] . 0. 4. 8
15	U5LP0009	4	Kit, Piston	[C] (15) Not serviced, order REF.15
16		1	PISTON	(15) Not serviced, order REF.15
17		1		(15) Not serviced, order REF.15
18	0170002	1	Circlip	(15)
19	0170002	1	Circlip	(15)
20	41158022	4	Kit, Piston Ring	[X] . 0. 4. 8
21	31171681	1	Gear,Crankshaft	[X] Number of teeth/spines 28 . 1. 2. 4
22	0500012	1	Woodruff Key	
23	31148798	1	Pulley,Crank	
24	33125416	1	Washer	
25	3552228M1	1	CROWNWHEEL	Number of teeth/spines 115
26	33117127	6	Washer	

MASSEY FERGUSON

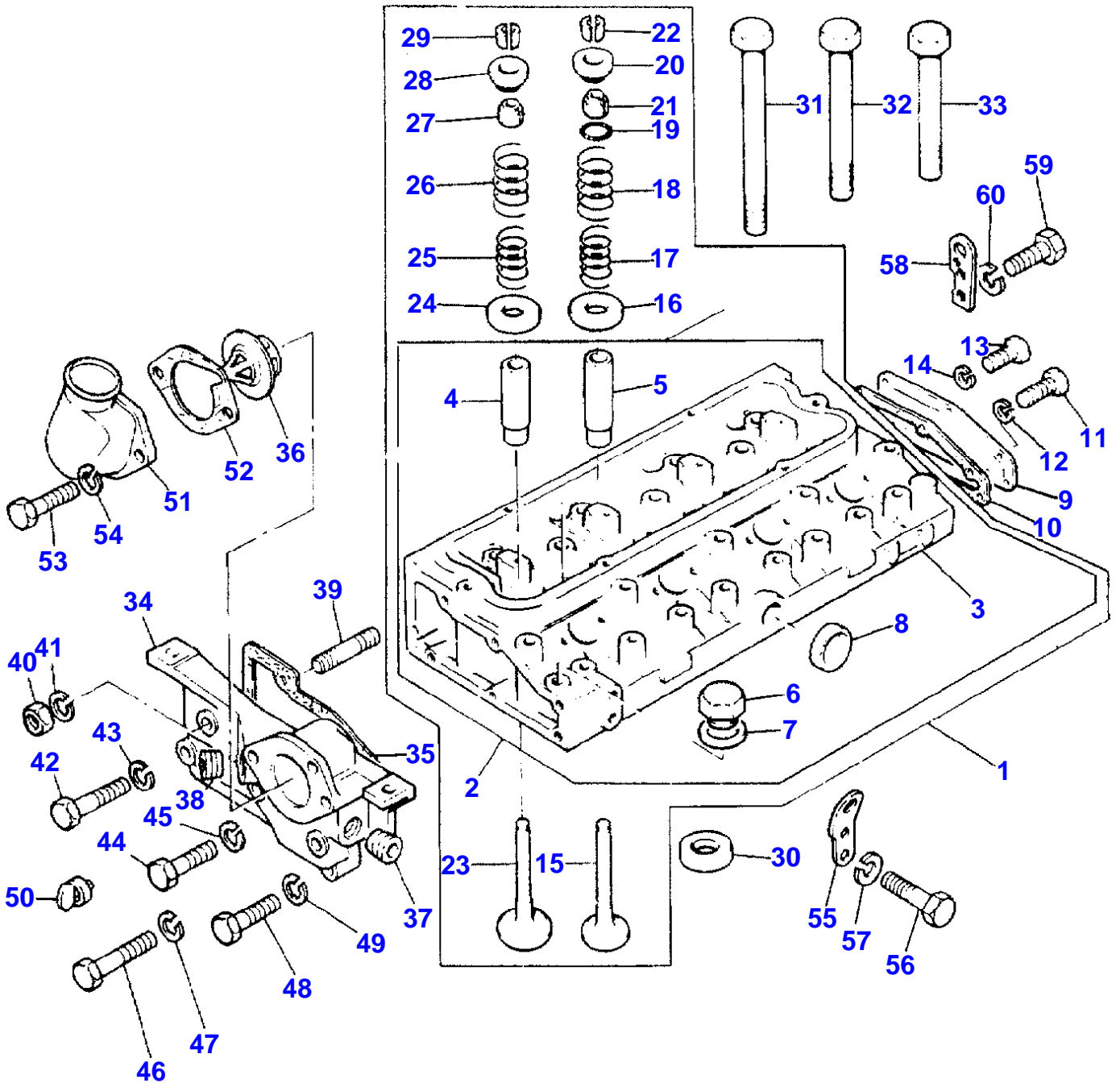
MF 396 C CRAWLER (IT) - 3311794

3311794

CRANKSHAFT, PISTONS AND CONNECTING RODS-A4.248 ENGINE

4

Item	Part Number	Qty	Description	Comments
				[A] PRE-FINISHED
				[C] PRE-TOPPED
				[B] UNTOPPED
				[X] QTY PER TRACTORS SOLD (AA.BBB.CCC.DDD) (AA) FOR 1 ,(BBB) 2-10 (CCC) 11-25 (DDD) 26-50
				[D] NOT SUPPLIED WITH ASSEMBLY



CYLINDER HEAD-A4.248 ENGINE

Item	Part Number	Qty	Description	Comments
1	ZZ80175	1	CYLINDER HEAD	
2	ZZ80176	1	CYLINDER HEAD	[X] (1)
3		1		. 0. 0. 1 (2) Not serviced, order REF.2
4		4		(2)
5	3343J002	4	Guide	. 0. 4. 8 [X] (2) . 0. 4. 8
6	0650203	1	Plug	[X] (2)
7	2411157	1	Washer	(2)
8	0650710	1	Plug	(2)
9	3623K007	1	Plate	
10	3687M018	1	GASKET	
11	0746452	2	Setscrew	
12	0920054	2	Washer	
13	2183205	4	Screw	
14	0920053	4	Washer	
15	31431881	4	Valve Exhaust	[D, X] Alternative 31431886 . 0. 4. 8
15	3142A052	4	Valve Exhaust	[C] (1)
16	33415118	4	Washer	[X] (1) . 4. 8. 16
17	31744131	4	Spring	[X] (1) . 4. 8. 16
18	31745121	4	Spring	[X] (1) . 4. 8. 16
19	2415B201	4	O Ring	[X] (1) . 0. 4. 8
20	33817117	4	Seal	[X] (1) . 0. 4. 8
21	33423147	4	Cap	[X] (1) . 0. 4. 8
22	33173108	8	Cotter	[A, X] (1) . 0. 4. 8
23	31431641	4	Valve Inlet	[X] (1) . 0. 4. 8
24	33415118	4	Washer	[X] (1) . 0. 4. 8
25	31744131	4	Spring	[X] (1) . 0. 4. 8
26	31745121	4	Spring	[X] (1) . 0. 4. 8
27	33817117	4	Seal	[X] (1) . 0. 4. 8
28	33423147	4	Cap	[X] (1) . 0. 4. 8
29	33173108	8	Cotter	[A, X] (1) . 0. 4. 8
30	33152153	4	Insert	[X] . 1. 2. 6
31	32166337	2	Screw	
32	32166338	12	Bolt	
33	32166339	8	Screw	
34	37762705	1	Body	
35	3545576M1	1	BODY	[E]
35	3685F005	1	GASKET	[X] . 2. 4. 8
36	2485659	1	Thermostat	[X] . 1. 2. 6
37	2431154	1	Plug	
38	2431154	1	Plug	
39	2217202	1	Stud	
40	2188135	1	Nut	
41	0920054	1	Washer	
42	0096238	1	Bolt	
43	0920053	1	Washer	

CYLINDER HEAD-A4.248 ENGINE

Item	Part Number	Qty	Description	Comments
44	0096439	1	Bolt	
45	0920054	1	Washer	
46	2183205	2	Screw	
47	0920053	2	Washer	
48	0746459	2	SCREW	
49	0920054	2	Washer	
50	2485791	1	Pin	
51		1		[B]
52	36862225	1	GASKET	[X] . 2. 4. 16
53	0746458	2	SCREW	
54	0920054	2	Washer	
55	3648C004	1	Plate	
56	353537X1	2	Screw Unf	
57	0920054	2	Washer	
58	36177111	1	Plate	
59	353537X1	2	Screw Unf	
60	0920054	2	Washer	

[A]
SERVICED IN PAIRS
[X]
QTY PER TRACTORS SOLD (AA.BBB.CCC.DDD) (AA) FOR 1 ,(BBB) 2-10 (CCC)
11-25 (DDD) 26-50
[E]
WITH CONDITIONED AIR
[C]
REMOVE AND FIT 31431881
[D]
FITTED IN PLACE OF EXHAUST VALVES SUPPLIED WITH CY LINDER HEAD
ASSEMBLY
[B]
NOT SUPPLIED BY PERKINS ENGINES LIMITED.

Buy Now



Our support email:

ebooklibonline@outlook.com