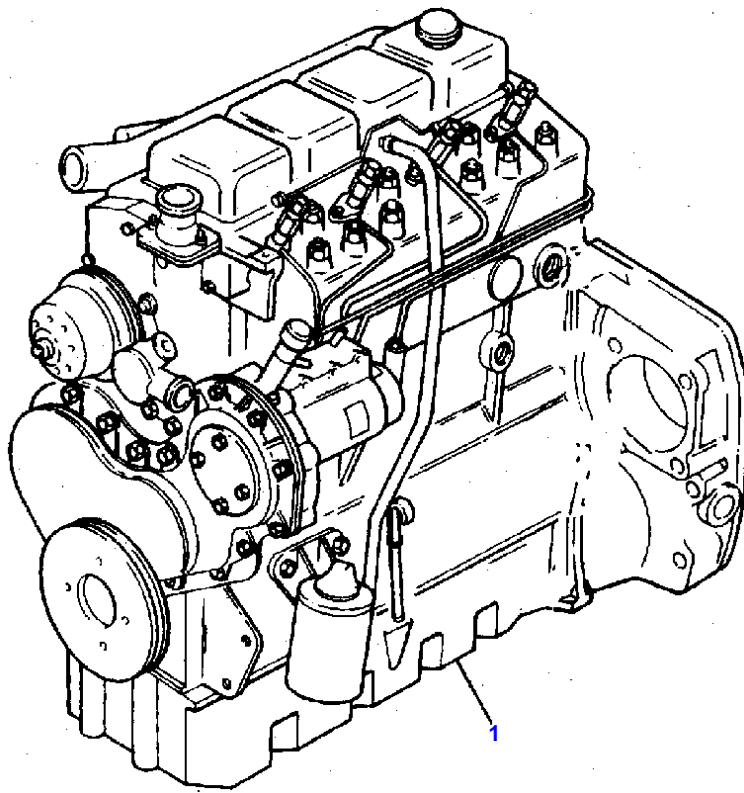


Page Title	Page Number
ENGINE ASSEMBLY-T4.236 ENGINE	1
SHORT ENGINE-T4.236 ENGINE	2
KIT ENGINE OVERHAUL	3
CYLINDER BLOCK-T4.236 ENGINE	4
CRANKSHAFT, PISTONS AND CONNECTING RODS-T4.236 ENGINE	5
CYLINDER HEAD-T4.236 ENGINE	6
ROCKER SHAFT-T4.236 ENGINE	7
TIMING GEAR AND CAMSHAFT-T4.236 ENGINE	8
FUEL INJECTION EQUIPMENT-T4.236 ENGINE	9
BALANCER UNIT-T4.236 ENGINE	10
LUBRICATING OIL SUMP-T4.236 ENGINE	11
LUBRICATING OIL FILTER AND INTEGRAL COOLER-T4.236 ENGINE	12
WATER PUMP, THERMOSTAT AND HEAT EXCHANGER-T4.236 ENGINE	13
FUEL SYSTEM AND FILTER-T4.236 ENGINE	14
TURBOCHARGER-T4.236 ENGINE	15
TURBOCHARGER-T4.236 ENGINE	16
TURBOCHARGER-T4.236 ENGINE	17
ALTERNATOR-VALEO TYPE	18
ALTERNATOR-ISKRA TYPE	19
STARTER MOTOR-MARELLI	20
STARTER MOTOR-ISKRA TYPE	21
STARTER MOTOR-BOSCH	22
COOLING SYSTEM-FAN AND HOSES	23
COOLING SYSTEM-RADIATOR AND BRACKET	24
FUEL SYSTEM	25
FUEL TANK-TANK STD	26
DRY AIR FILTER	27
EXHAUST SYSTEM	28
THROTTLE CONTROLS	29
INSTRUMENT PANEL-CENTRAL ELECTRICAL EQUIPEMENT.	30
INSTRUMENT PANEL-POINTERS	31
BATTERY BATTERY CASE	32
ELECTRONIC HARNESS-CENTRAL ELECTRICAL EQUIPEMENT.	33
ELECTRICAL WIRING-REAR	34
ELECTRICAL WIRING-REAR	35
SENSORS HARNESS-FRONT	36
LIGHTING EQUIPMENT-LIGHTS	37
CLUTCH-VALEO - 12	38
CLUTCH-LUK - 12	39
CLUTCH-O.M.G. - 12	40
CLUTCH PEDAL AND LINKAGE	41
CLUTCH PEDAL AND LINKAGE-CLUTCH SHAFT BRAKING SISTEM WITH STANDARD TRAN	42
CLUTCH PEDAL AND LINKAGE-CLUTCH SHAFT BRAKING SISTEM WITH SHUTTLE VERSI	43
CENTRE AXLE HOUSING AND TRANSMISSION HOUSING	44
CENTRE AXLE HOUSING AND TRANSMISSION HOUSING	45
TRANSFER GEAR BOX-CONTROL COVER	46
TRANSMISSION	47
TRANSMISSION	48
TRANSMISSION CONTROL-DRIVING LEVER AND COVER HOUSING	49
TRANSMISSION CONTROL-STANDARD VERSION	50
TRANSMISSION-SHUTTLE AND CREEPER VERSION	51
REDUCER CONTROL OPZIONS-SHUTTLE AND CREEPER VERSION	52
TRANSMISSION CONTROL-SHUTTLE AND CREEPER VERSION	53
TRANSMISSION-OVERDRIVE AND SHUTTLE VERSION	54
REDUCER CONTROL OPZIONS-OVERDRIVE AND SHUTTLE VERSION	55
TRANSMISSION CONTROL-OVERDRIVE AND SHUTTLE VERSION	56
PTO SHAFT-STANDARD TYPE	57
PTO SHAFT-540/750/1000 R.P.M.	58
REAR AXLE	59
BRAKE AND CONTROLS	60
BRAKE AND CONTROLS	61
STEERING CLUTCH	62
STEERING CLUTCH-PIPINGS	63
STEERING CLUTCH	64
STEERING CLUTCH-DRIVING LEVER	65
STEERING CLUTCH-PIPINGS	66

TABLE OF CONTENT

ACCESSORIES MISCELLANEOUS	67
BRAKES	68
TRACK ADJUSTER	69
TRACK CHAIN-TRACK CHAIN	70
TRACK CHAIN-TRACK CHAIN WITH LUBRICATOR	71
SUSPENSION TRACK CHAIN-FRONT - REAR	72
SUSPENSION TRACK CHAIN-TRACK CARRIER	73
UPPER ROLLER	74
LOWER ROLLER	75
HYDRAULIC EQUIPMENT	76
HYDRAULIC EQUIPMENT-HEAT EXCHANGER	77
HYDRAULIC PUMP-BOSCH	78
HYDRAULIC PUMP-TUROLLA	79
HYDRAULIC LIFT VALVE	80
HYDRAULIC LIFT	81
HYDRAULIC LIFT	82
MECHANICAL CONTROL LIFT	83
MECHANICAL CONTROL LIFT	84
HYDRAULIC INSTALLATION-AUXILIARY-WITH AUXILIARY PUMP	85
HYDRAULIC INSTALLATION-AUXILIARY-WITH AUXILIARY PUMP	86
HYDRAULIC PUMP	87
AUXILIARY HYDRAULIC VALVE LINES-OMC TYPE UP TO SERIAL NO. C07070	88
AUXILIARY HYDRAULIC VALVE LINES-2 OR 3 DISTRIBUTORS	89
AUXILIARY HYDRAULIC VALVE LINES-WITH 4 OR 5 DISTRIBUTORES	90
CONTROL VALVE-O.M.C. TYPE	91
AUXILIARY HYDRAULICS VALVE-STANDARD TYPE	92
AUXILIARY HYDRAULICS VALVE-FLOATING	93
AUXILIARY HYDRAULIC VALVE LINES-FROM SERIAL NO. C07071	94
AUXILIARY HYDRAULIC VALVE LINES-2 OR 3 DISTRIBUTORS	95
AUXILIARY HYDRAULIC VALVE LINES-WITH 4 OR 5 DISTRIBUTORES	96
CONTROL VALVE-HIDROIRMA TYPE.	97
AUXILIARY HYDRAULICS VALVE STANDARD-HIDROIRMA TYPE.	98
AUXILIARY HYDRAULICS FLOATING-HIDROIRMA TYPE.	99
LINKAGE-UP TO SERIAL NUMBER C32117.	100
LINKAGE-FROM SERIAL NO C32118	101
SHEET METAL-UP TO SERIAL NUMBER B08111	102
SHEET METAL-FROM SERIAL NO. B08112	103
SHEET METAL-UP TO SERIAL NUMBER B08111	104
SHEET METAL-FROM SERIAL NO. B08112	105
SHEET METAL-BRACKETS AND ASSEMBLING PARTS	106
DECALS	107
DECALS	108
SUPPORTS PLATFORM	109
PLATFORM WITHOUT PILLARS	110
GUARDS-TRACK ROLLERS GUARDS	111
REAR SHEET METAL	112
SAFETY FRAME	113
SEAT-STANDARD TYPE	114
SEAT-LUX TYPE	115
SEAT-STANDARD VERSION	116
SEAT-LUX TYPE	117
WEIGHT FRAME AND WEIGHTS W-FRONT HOOK	118
REAR HOOK-FOR ITALY	119
DRAWBAR-UP TO SERIAL NUMBER C32117.	120
DRAWBAR-FROM SERIAL NO C32118	121
TOOL KIT-.	122



MASSEY FERGUSON

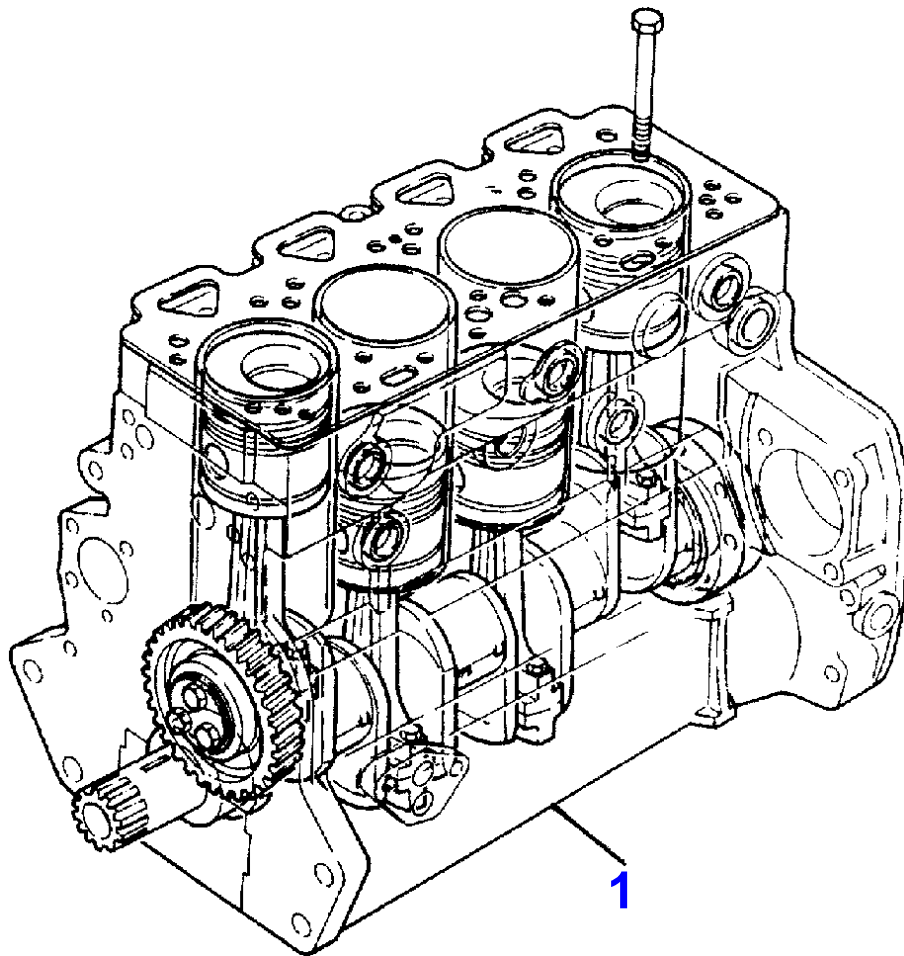
MF 396 CT CRAWLER (IT) - 3540397

3540397

ENGINE ASSEMBLY-T4.236 ENGINE

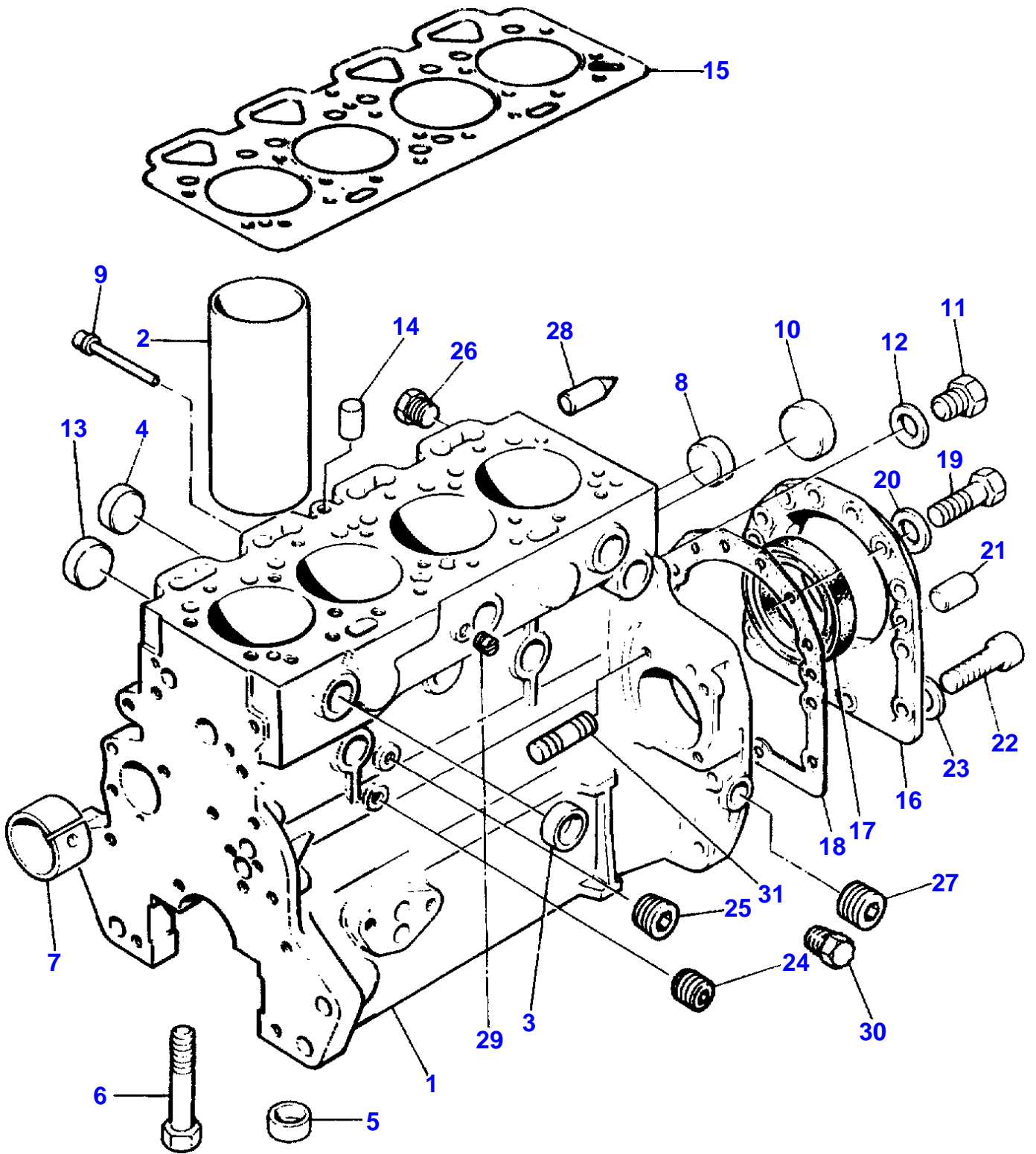
1

Item	Part Number	Qty	Description	Comments
1	3553130M91	1	Engine	"PK-LJ31229"



SHORT ENGINE-T4.236 ENGINE

Item	Part Number	Qty	Description	Comments
1	LJ39305	1	SHORT ENGINE	
2		1		[A] (1)
		4		(1)
		1		(1)
		4		(1)
		4		(1)
		4		(1)
		10		(1)
		8	BUSH	
		4		
		1		(1)
		1	HOUSING	(1)
		22		(1)
		1		(1)
				[A]
				COMPLETE WITH PLUGS



CYLINDER BLOCK-T4.236 ENGINE

Item	Part Number	Qty	Description	Comments
1	ZZ50112	1	Kit,Cyl.Block	
2	3135X031	4	Liner	[A, X] (1) 0. 4. 8
2	3135X032	X	Liner	[B, X] . 4. 4. 8
3	0650710	6	Plug	(1)
4	32418122	4	Plug	(1)
5	33142111	10	Thimble	(1)
6	32166329	10	Bolt	(1)
7	31134165	1	BUSH	(1)
8	0650710	2	Plug	(1)
9	2485A204	1	Plug	(1)
10	32416119	1	PLUG	(1)
11	32168212	1	PLUG	(1)
12	3311R003	1	Washer	(1)
13	32416118	4	PLUG	(1)
14	32417134	1	Plug	(1)
15	3681E034	1	GASKET	[X] . 1. 4. 8
16	4142V066	1	FLANGE	[C]
17	2418F475	1	Seal	[X] (16) . 1. 2. 4
18	3681T018	1	GASKET	
19	0746211	10	Bolt	[D]
	0746211	12	Bolt	[E]
20	390972X1	10	Washer Metric	
	390972X1	12	Washer Metric	[E]
21	0350009	2	Dowel	
22	2172530	2	Capscrew	
23	33112111	2	Washer	
24	0650594	1	Plug	
25	0650588	2	Plug	
26	32161114	1	Plug	
27	0650588	2	Plug	(1)
28	32452113	1	Pointer	
29	32114143	1	Plug	
30	32161114	1	Plug	
31	0826481	3	Stud	

[A]  
PRESS FIT

[B]  
SLIP FIT

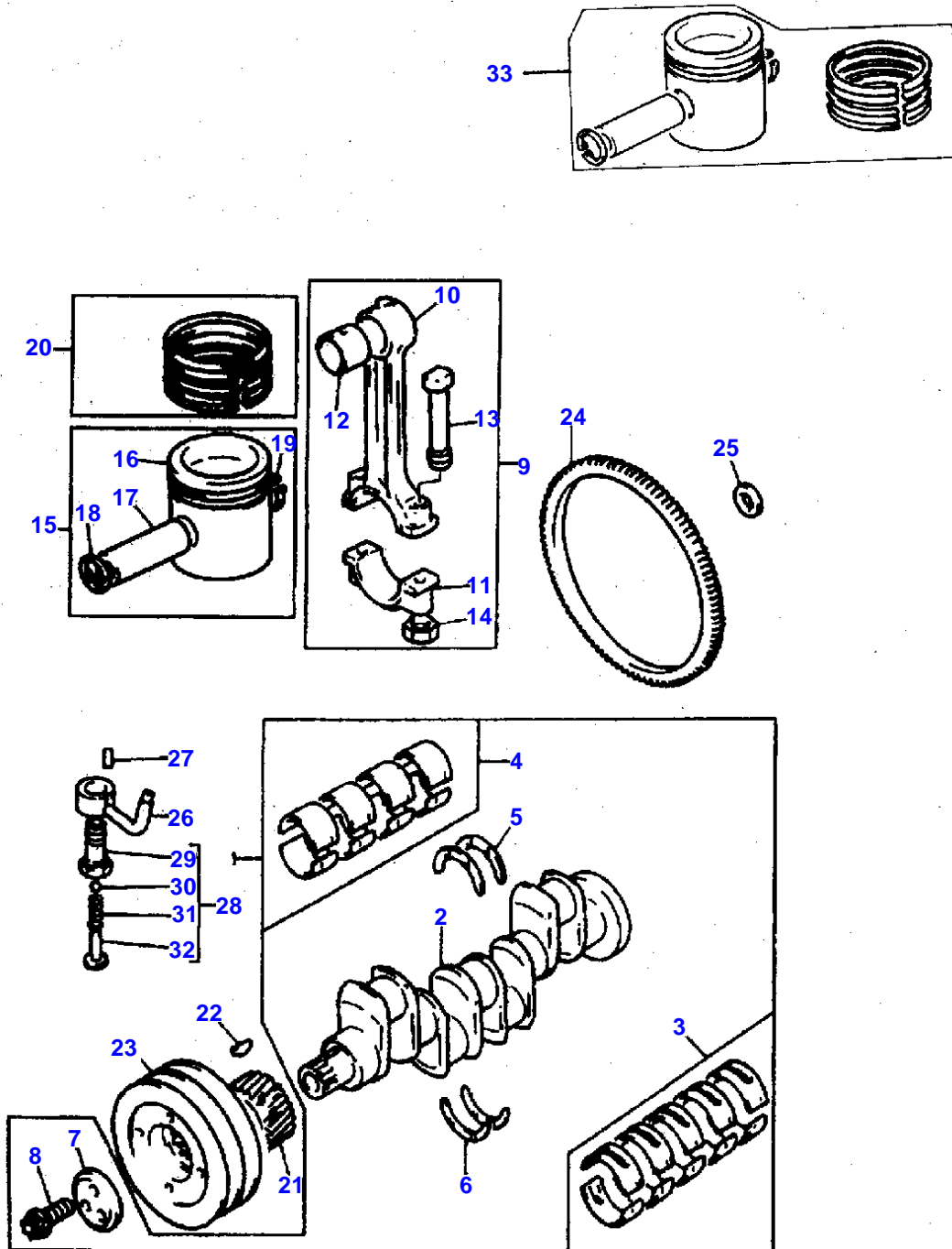
[X]  
QTY PER TRACTORS SOLD (AA.BBB.CCC.DDD) (AA) FOR 1 ,(BBB) 2-10 (CCC) 11-25 (DDD) 26-50

[C]  
USE 4142V066/36817181/0746211 X 2 0920003 X 2 +362 7P012

[D]  
USED ONLY WITH 4142V064/4142V061

[E]  
USED ONLY WITH 4142V066.



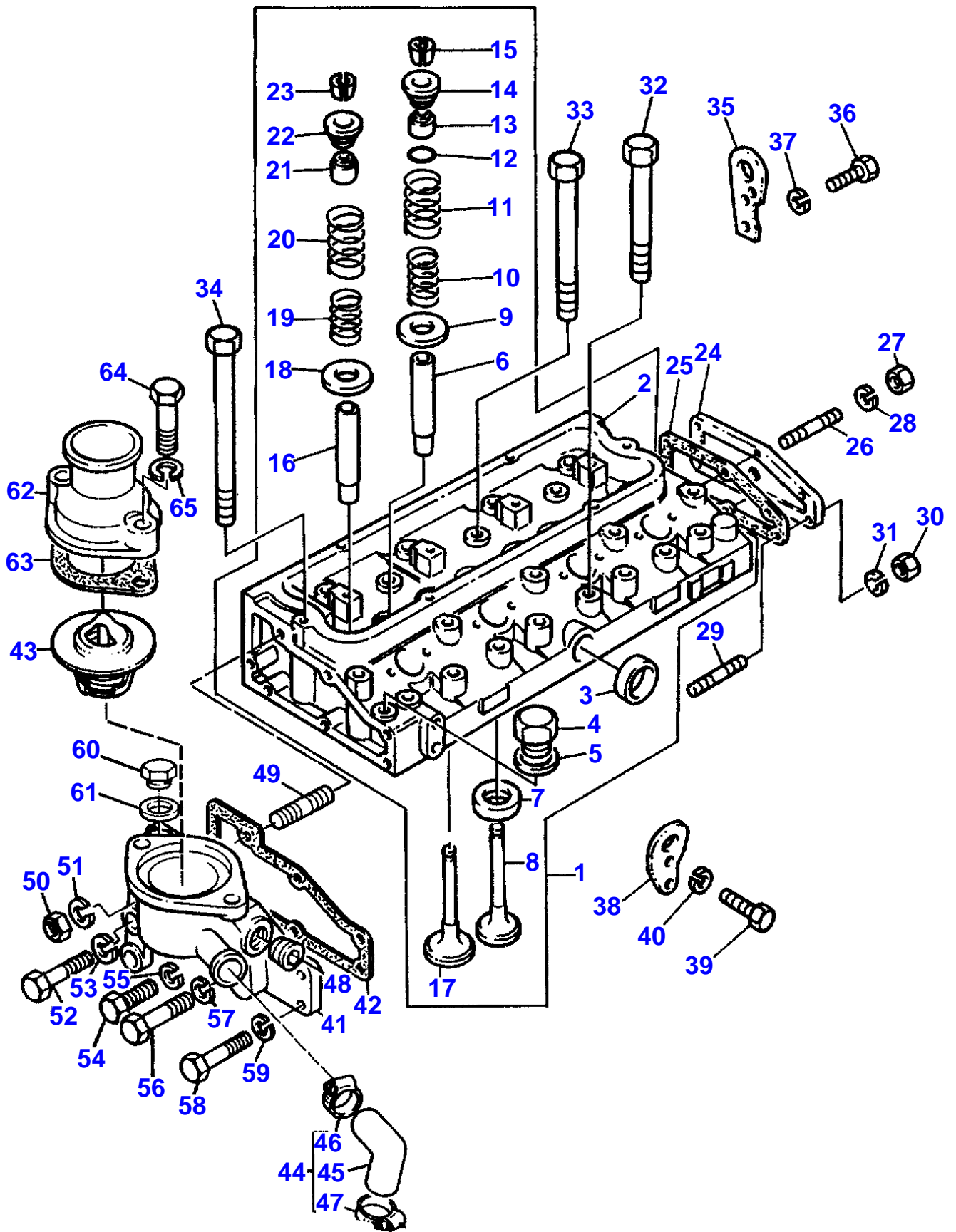


CRANKSHAFT, PISTONS AND CONNECTING RODS-T4.236 ENGINE

Item	Part Number	Qty	Description	Comments
1	ZZ90082P	1	SHAFT	
2		1	SHAFT	(1) Not serviced, order REF.1
3	81558	1	Kit, Bearing	[A, X] (1) . 1. 2. 4
3	81558A	X	Kit, Bearing	[A] Thickness (-)0.25MM Thickness (-)0.010"
3	81558B	X	Kit, Bearing	[A] Thickness (-)0.50MM Thickness (-)0.020"
3	81558C	X	Kit, Bearing	[A] Thickness (-)0.75MM Thickness (-)0.030"
4	85042	1	Kit, Bearing	[A, X] (1) . 1. 2. 4
4	85042A	X	Kit, Bearing	[A] Thickness (-)0.25MM Thickness (-)0.010"
4	85042B	X	Kit, Bearing	[A] Thickness (-)0.50MM Thickness (-)0.020"
4	85042C	X	Kit, Bearing	[A] Thickness (-)0.75MM Thickness (-)0.030"
5	31137551	2	Thrust Washer	[X] (1) . 1. 2. 4
5	31137312	X	Thrust Washer	Thickness (+)0.19MM Thickness (+)0.0075"
6	31137561	2	Thrust Washer	[X] (1) . 1. 2. 4
6	31137322	X	Thrust Washer	Thickness (+)0.19MM Thickness (+)0.0075"
7	3242T001	1	Thrust Block	[N] (1)
	33125124	1	Washer	[M]
8	32186139	3	Screw	[N] (1)
	32162331	1	Screw	[M]
9	ZZ90013	4	Kit, Conrod	[X] . 4. 8. 16
10		1	CONROD	(9) Not serviced, order REF.9
11		1		(9) Not serviced, order REF.9
12	31134131	1	Bush	[X] (9) . 0. 4. 8
13	32762145	2	SCREW	(9)
14	33221328	2	Nut	(9)
15	U5LU0020	4	Kit, Piston	[B, E, K, X] . 4. 8. 16
15	U5LU0028	4	Kit, Piston	[B, E, K]
	U5LP0022	X	Kit, Piston	[C, E, K]
	U5LP0046	X	Kit, Piston	[C, E, K]
	U5LU0004	4	Kit, Piston	[B, D]
	U5LP0006	X	Kit, Piston	[C, D]
16		1	PISTON	(15) Not serviced, order REF.15
17		1		(15) Not serviced, order REF.15
18	2721A029	1	Circlip	(15)
19	2721A029	1	Circlip	(15)
20	41158005	4	Kit, Piston Ring	[D, X] . 4. 8. 16
20	4181A022	4	Kit, Piston Ring	[E, F] Up to Serial or Engine Number U391618U
20	4181A022	4	Kit, Piston Ring	[G, H] From Serial or Engine Number U391619U
21	31171681	1	Gear,Crankshaft	[X] Number of teeth/spines 28 . 1. 2. 4
22	0500012	1	Woodruff Key	

CRANKSHAFT, PISTONS AND CONNECTING RODS-T4.236 ENGINE

Item	Part Number	Qty	Description	Comments
23	31153242	1	Pulley,Crank	
24	3552228M1	1	CROWNWHEEL	Number of teeth/spines 115
25	0921062	3	Tab Washer	
26	3536V001	4	Jet	[J]
27	2116A023	4	Dowel	[L]
28	4138A017	4	Valve	
29		1		(28) Not serviced, order REF.28
30		1		(28) Not serviced, order REF.28
31		1		(28) Not serviced, order REF.28
32		1		(28) Not serviced, order REF.28
33	U5PR0024	4	KIT	[B, K]
33	U5PR0041	4	KIT	[B, K]
33	U5PR0025	4	KIT	[C, K]
33	U5PR0042	4	Kit, Piston	[C, K]
				[A] PRE-FINISHED
				[C] PRE-TOPPED
				[B] UNTOPPED
				[X] QTY PER TRACTORS SOLD (AA.BBB.CCC.DDD) (AA) FOR 1 ,(BBB) 2-10 (CCC) 11-25 (DDD) 26-50
				[F] MAY BE REPLACED BY 4181A022 IN ENGINE SETS ONLY .
				[G] FROM ENGINE NO. U391619U (IN ENGINE SETS ONLY)
				[H] WAS 41158145 USE 4181A022-USE IN ENGINE SETS ONLY .
				[N] USED ONLY WITH CRANKSHAFTS U5BG0022/U5BG0023/U5BG0024/U5BG0025/U5BG0026/ZZ90081/ZZ90082
				[J] WAS 3531P004 USE 3536V001/2116024
				[L] USED ONLY WITH 3536V001
				[D] UP TO ENGINE NO U027773M. SEE ALSO SERVICE BULLETIN NO.21
				[E] FROM ENGINE NO U027774M. SEE ALSO SERVICE BULLETIN NO.21
				[M] USED ONLY WITH CRANKSHAFTS 68609/94434/U5BG0008/U5BG0009/U5BG0019.
				[K] SEE PETERBOROUGH SERVICE BULLETIN NO.41



CYLINDER HEAD-T4.236 ENGINE

Item	Part Number	Qty	Description	Comments
1	ZZ80077P	1	CYLINDER HEAD	[X]
				. 0. 0. 1
2	ZZ80087	1	HEAD	(1)
3	0650710	1	Plug	(2)
4	0650203	1	Plug	(2)
5	2411107	1	Washer	(2)
6	3343J021	4	GUIDE	[K, X] (1)
				. 4. 8. 16
7	33152153	4	Insert	(2)
8	3142A052	4	Valve Exhaust	[X] (1)
				. 4. 8. 16
8	3142A054	X	Valve Exhaust	[J]
				Thickness (+)0,015"
8	3142A055	X	Valve Exhaust	[J]
				Thickness (+)0,030"
9	33123117	4	Washer	[G, X] (1)
				. 0. 4. 8
9	33415118	4	Washer	[H, X] (1)
				. 4. 8. 16
10	31744131	4	Spring	[X] (1)
				. 4. 8. 16
11	31745121	4	Spring	[X] (1)
				. 4. 8. 16
12	2415B201	4	O Ring	[P, X] (1)
				. 4. 8. 16
12		4		[L]
13	33817117	4	Seal	[X] (1)
				. 4. 8. 16
14	33423147	4	Cap	[X] (1)
				Up to Serial or Engine Number U907032K
				. 0. 4. 8
14	33423147	4	Cap	[E, X] (1)
				From Serial or Engine Number U907033K
				. 4. 8. 16
15	33173108	8	Cotter	[A, X] (1)
				. 4. 8. 16
16	3343F041	4	GUIDE	[K, X] (1)
				. 4. 8. 16
17	3142H002	4	Valve Inlet	[X] (1)
				. 4. 8. 16
17	3142H003	X	Valve Inlet	[J]
				Thickness (+)0,003"
17	3142H004	X	Valve Inlet	[J]
				Thickness (+)0,015"
17	3142H005	X	Valve Inlet	[J]
				Thickness (+)0,030"
18	33123117	4	Washer	[G, X] (1)
				. 0. 4. 8
18	33415118	4	Washer	[H] (1)
19	31744131	4	Spring	[X] (1)
				. 0. 4. 8
20	31745121	4	Spring	[X] (1)
				. 0. 4. 8
21	33817117	4	Seal	[X] (1)
				. 0. 4. 8
22	33423147	4	Cap	(1)
				Up to Serial or Engine Number U907032K
22	33423147	4	Cap	[E] (1)
				From Serial or Engine Number U907033K
23	33173108	8	Cotter	[A, X] (1)
				. 0. 4. 8
24	3623K007	1	Plate	
25	3687M018	1	GASKET	
26	0746452	2	Setscrew	Up to Serial or Engine Number 07/88
				Length 25MM
26	2183205	2	Screw	Up to Serial or Engine Number 07/88
	0826244	4	Stud	From Serial or Engine Number 07/88
27	353916X1	4	Nut Unf	From Serial or Engine Number 07/88
28	0920053	4	Washer	

CYLINDER HEAD-T4.236 ENGINE

Item	Part Number	Qty	Description	Comments
29	0826428	2	STUD	From Serial or Engine Number 07/88
30	0576052	2	Nut	From Serial or Engine Number 07/88
31	0920054	2	Washer	
32	32166219	8	Bolt	[B, M]
32	32166337	2	Screw	[N]
33	32166221	12	Bolt	[M]
33	32166338	12	Bolt	[N]
34	32166222	2	Screw	[M]
34	32166339	8	Screw	[N]
35	36177111	1	Plate	
36	353537X1	2	Screw Unf	
37	0920054	2	Washer	
38	3648C004	1	Plate	
39	353537X1	2	Screw Unf	
40	0920054	2	Washer	
41	37766917	1	Therm. Housing	[C]
42	3685F005	1	GASKET	
43	2485613	1	Thermostat	[X] . 2. 4. 16
44	U5MH0023	1	PIPE	
45		1		(44) Not serviced, order REF.44
46	21825197	1	Clip	(44)
47	21825197	1	Clip	(44)
48	2431154	1	Plug	
49	2217178	1	Stud	
50	2188135	1	Nut	
51	0920054	1	Washer	
52	0096438	1	Bolt	
53	0920054	1	Washer	
54	2183205	2	Screw	
55	0920053	2	Washer	
56	0096242	1	Bolt	
57	0920053	1	Washer	
58	0746456	2	SCREW	
59	0920054	2	Washer	
60	0650203	1	Plug	
61	2411157	1	Washer	
62	37464611	1	Connection	
63	36834152	1	GASKET	[X] From Serial or Engine Number U792123H . 2. 4. 16
64	0746424	2	Bolt	
65	0920054	2	Washer	
66	1440314X1	2	Washer	

[A]  
SERVICED IN PAIRS  
[X]  
QTY PER TRACTORS SOLD (AA.BBB.CCC.DDD) (AA) FOR 1 ,(BBB) 2-10 (CCC) 11-25 (DDD) 26-50  
[B]  
6 OFF UP TO ENGINE NO. U874811J  
[J]  
OVERSIZE VALVES CAN ONLY BE USED WIYH CYLINDERHEAD S WHEN VALVE GUIDES ARE N  
[P]  
USED ONLY WITH ZZ80056  
[K]  
USED ONLY WIYH HEADS MACHINED TO ACCOMODATE VALVE GUIDES DE VALVE.  
[L]  
NO LONGER REQUIRED  
[E]  
USED ONLY WITH 31745121  
[G]  
USED ONLY WITH U5BD0026 (CYLINDER HEAD)  
[H]  
USED ONLY WITH ZZ 80056 (CYLINDER HEAD)  
[M]

**Buy Now**



Our support email:

[ebooklibonline@outlook.com](mailto:ebooklibonline@outlook.com)