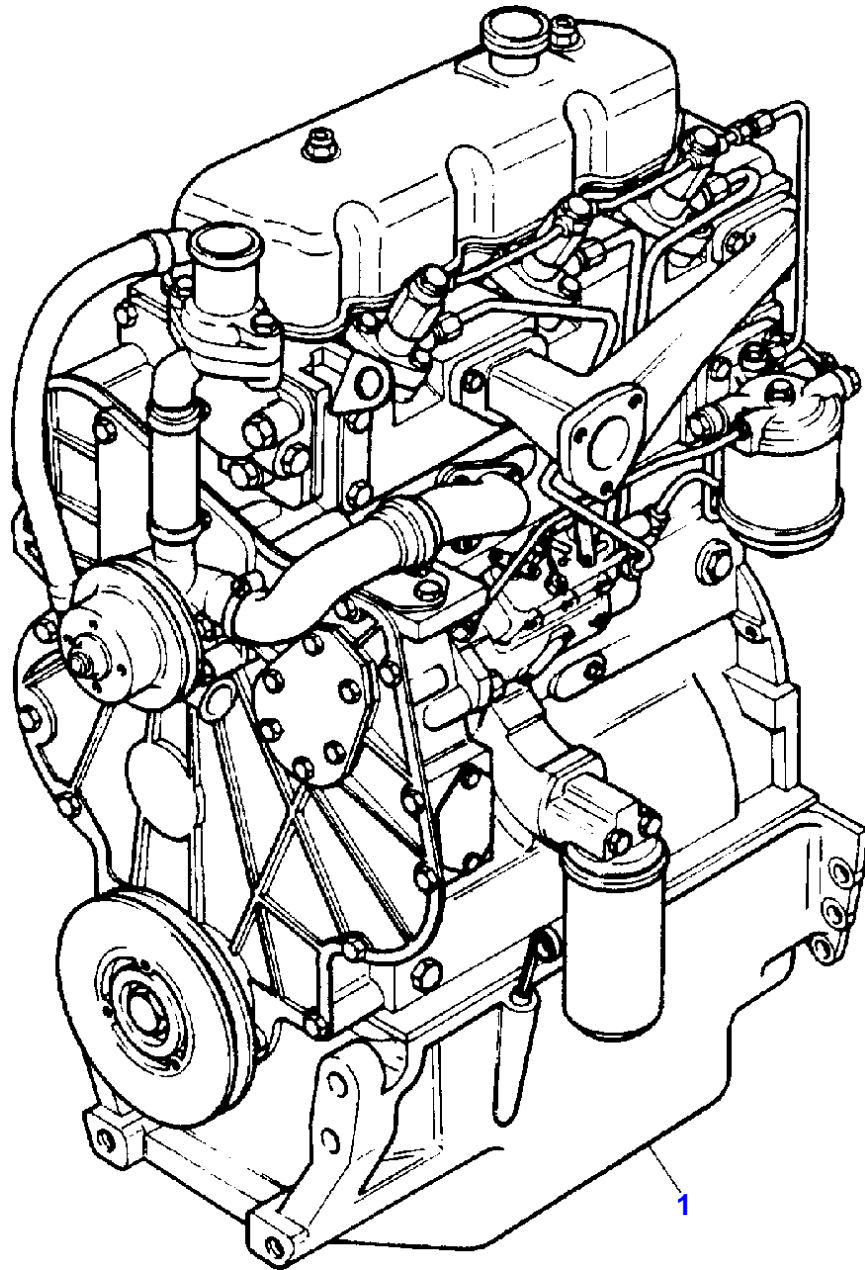


| Page Title | Page Number |
|---|-------------|
| ENGINE ASSEMBLY-AD3.152 ENGINE | 1 |
| SHORT ENGINE-TABLE PK ACEC9106 | 2 |
| CYLINDER BLOCK-AD3.152 ENGINE | 3 |
| CRANKSHAFT, PISTONS AND CONNECTING RODS-AD3.152 ENGINE | 4 |
| CYLINDER HEAD-AD3.152 ENGINE | 5 |
| ROCKER SHAFT-AD3.152 ENGINE | 6 |
| TIMING GEAR AND CAMSHAFT-AD3.152 ENGINE | 7 |
| FUEL INJECTION EQUIPMENT-AD3.152 ENGINE | 8 |
| LUBRICATING OIL SUMP-AD3.152 ENGINE | 9 |
| LUBRICATING OIL FILTER AND INTEGRAL COOLER-AD3.152 ENGINE | 10 |
| WATER PUMP, THERMOSTAT AND HEAT EXCHANGER-AD3.152 ENGINE | 11 |
| FUEL SYSTEM AND FILTER-AD3.152 ENGINE | 12 |
| AIR INDUCTION AND EXHAUST SYSTEM | 13 |
| ALTERNATOR POSITIONER-AD3.152 ENGINE | 14 |
| JOINTS AND GASKETS-AD3.152 ENGINE | 15 |
| HEATER KIT-COLD CLIMATE | 16 |
| ALTERNATOR | 17 |
| ALTERNATOR | 18 |
| ALTERNATOR-ISKRA TYPE | 19 |
| STARTER MOTOR-MARELLI TYPE | 20 |
| STARTER MOTOR-ISKRA TYPE | 21 |
| STARTER MOTOR-BOSCH | 22 |
| COOLING SYSTEM-FAN AND HOSES | 23 |
| COOLING SYSTEM-RADIATOR AND BRACKET | 24 |
| FUEL SYSTEM | 25 |
| FUEL TANK | 26 |
| DRY AIR FILTER-DRY AIR CLEANER | 27 |
| EXHAUST SYSTEM | 28 |
| THROTTLE CONTROLS | 29 |
| THROTTLE CONTROLS | 30 |
| BATTERY | 31 |
| INSTRUMENT PANEL AND INSTRUMENTS | 32 |
| INSTRUMENT PANEL AND INSTRUMENTS | 33 |
| ELECTRONIC HARNESS | 34 |
| ELECTRICAL WIRING-FRONT | 35 |
| ELECTRICAL WIRING-REAR | 36 |
| LIGHTING EQUIPMENT | 37 |
| LIGHTING EQUIPMENT | 38 |
| CLUTCH-O.M.G. - 11 | 39 |
| CLUTCH-LUK - 11 | 40 |
| CLUTCH PEDAL AND LINKAGE | 41 |
| LOWER CLUTCH P.T.O. | 42 |
| CENTRE AXLE HOUSING AND TRANSMISSION HOUSING | 43 |
| CENTRE AXLE HOUSING AND TRANSMISSION HOUSING | 44 |
| TRANSMISSION | 45 |
| TRANSMISSION | 46 |
| SHIFT LEVERS | 47 |
| GEAR BOX-FOR SHUTTLE VERSION ONLY. | 48 |
| REDUCER OPTION-FOR SHUTTLE VERSION ONLY. | 49 |
| GEAR BOX-FOR SHUTTLE VERSION ONLY. | 50 |
| GEAR BOX-FOR SPECIAL OPTIONS VERSION ONLY | 51 |
| REDUCER OPTION-OVERDRIVE AND SHUTTLE VERSION | 52 |
| REDUCER OPTION-OVERDRIVE AND UNDERDRIVE VERSION | 53 |
| REDUCER OPTION-OVERDRIVE AND CREEPER VERSION | 54 |
| REDUCER OPTION-UNDERDRIVE AND SHUTTLE VERSION | 55 |
| REDUCER OPTION-UNDERDRIVE E CREEPER VERSION | 56 |
| REDUCER OPTION-SHUTTLE AND CREEPER VERSION | 57 |
| PTO SHAFT-STANDARD | 58 |
| PTO SHAFT-540/750/1000 R.P.M. | 59 |
| PTO-CONTROL-STANDARD | 60 |
| PTO-CONTROL-540/750/1000 R.P.M. | 61 |
| TRANSFER GEAR BOX AND DRIVE SHAFT: | 62 |
| 4 WHEEL DRIVE CONTROLS | 63 |
| REAR AXLE | 64 |
| REAR AXLE | 65 |
| DIFFERENTIAL LOCK MECHANISM | 66 |

TABLE OF CONTENT

| | |
|--|-----|
| DIFFERENTIAL LOCK MECHANISM | 67 |
| BRAKE AND CONTROLS-PEDALS | 68 |
| BRAKE AND CONTROLS-PIPINGS | 69 |
| BRAKES AND CONTROLS | 70 |
| BRAKES | 71 |
| MASTER CYLINDER-BRAKE PUMP | 72 |
| BRAKE CYLINDER | 73 |
| TRAILER BRAKES-FRANCE TYPE | 74 |
| REAR WHEELS | 75 |
| WHEELS FRONT | 76 |
| FRONT AXLE 2 WHEEL DRIVE | 77 |
| FRONT AXLE 4 WHEEL DRIVE | 78 |
| FRONT AXLE 4 WHEEL DRIVE-WITH DISCBRAKES | 79 |
| FRONT AXLE 4 WHEEL DRIVE | 80 |
| FRONT AXLE 4 WHEEL DRIVE | 81 |
| FRONT AXLE 4 WHEEL DRIVE | 82 |
| STEERING HYDRAULIC LINES | 83 |
| STEERING HYDRAULIC LINES | 84 |
| STEERING ORBITROL UNIT-2 WHEEL DRIVE | 85 |
| STEERING ORBITROL UNIT-4 WHEELS DRIVE | 86 |
| STEERING-PUMP-TUROLLA | 87 |
| STEERING-PUMP-BOSCH | 88 |
| STEERING CYLINDER-TRACTOR FP - GE | 89 |
| STEERING CYLINDER | 90 |
| HYDRAULIC EQUIPMENT-HIDRAULIC LINES STD. | 91 |
| HYDRAULIC EQUIPMENT-WITH REAR AND FRONT CONTROL VALVE | 92 |
| HYDRAULIC PUMP-TUROLLA | 93 |
| HYDRAULIC PUMP-BOSCH | 94 |
| HYDRAULIC PUMP-TUROLLA | 95 |
| HYDRAULIC PUMP-BOSCH | 96 |
| HYDRAULIC LIFT VALVE-WITH MECANICS RISER | 97 |
| HYDRAULIC LIFT-WITH MECANICS RISER | 98 |
| HYDRAULIC LIFT-WITH ELECTRONIC LIFT | 99 |
| HYDRAULIC LIFT - DETAILS | 100 |
| ELECTRICAL WIRING-WITH ELECTRONIC LIFT | 101 |
| ELECTRICAL WIRING-WITH ELECTRONIC LIFT | 102 |
| ELECTRICAL WIRING-CONTROL PANEL ELECTRONIC LIFT | 103 |
| HYDRAULIC LIFT VALVE-WITH ELECTRONIC LIFT | 104 |
| HYDRAULIC LIFT CYLINDER | 105 |
| MECHANICAL CONTROL LIFT | 106 |
| MECHANICAL CONTROL LIFT-INTERMIX | 107 |
| MECHANICAL CONTROL LIFT | 108 |
| AUXILIARY HYDRAULIC VALVE LINES-TILL TYPE | 109 |
| AUXILIARY HYDRAULIC VALVE LINES-TILL TYPE | 110 |
| AUXILIARY HYDRAULICS-CONTROL FOR 1.0 DDISTRIBUTOR | 111 |
| AUXILIARY HYDRAULICS-CONTROL WITH 1.0 AND 2.0 DISTRIBUTOR. | 112 |
| AUXILIARY HYDRAULICS VALVE STANDARD-UP TO SERIAL N.B32126 | 113 |
| AUXILIARY HYDRAULICS VALVE STANDARD-FROM SERIAL N.B32127 | 114 |
| AUXILIARY HYDRAULICS FLOATING-UP TO SERIAL N.B32126 | 115 |
| AUXILIARY HYDRAULICS FLOATING-FROM SERIAL N.B32127 | 116 |
| AUXILIARY HYDRAULIC VALVE LINES-WITH 1.0 DISTRIBUTOR | 117 |
| AUXILIARY HYDRAULIC VALVE LINES-WITH 2.0 DISTRIBUTORES | 118 |
| AUXILIARY HYDRAULIC VALVE LINES-WITH 3.0 DISTRIBUTORES | 119 |
| AUXILIARY HYDRAULIC VALVE LINES-THIRD DISTRIBUTOR | 120 |
| AUXILIARY HYDRAULICS-CONTROL WITH 1.0 AND 2.0 DISTRIBUTOR. | 121 |
| AUXILIARY HYDRAULICS-CONTROL FOR 3.0 DISTRIBUTOR - HIDROIRMA | 122 |
| CONTROL VALVE-HIDROIRMA TYPE FOR REAR CONTROL VALVE | 123 |
| CONTROL VALVE-HIDROIRMA TYPE FOR REAR AND FRONT CONTROL VAL | 124 |
| AUXILIARY HYDRAULICS VALVE STANDARD-HIDROIRMA TYPE STANDARD | 125 |
| AUXILIARY HYDRAULICS VALVE STANDARD-HIDROIRMA TYPE STANDARD | 126 |
| AUXILIARY HYDRAULICS FLOATING-HIDROIRMA TYPE FLOATING | 127 |
| AUXILIARY HYDRAULICS FLOATING-HIDROIRMA TYPE FLOATING | 128 |
| .-HIDROIRMA TYPE. | 129 |
| .-HIDROIRMA TYPE. | 130 |
| UPPER AND LOWER LINKS AND RELATED PARTS | 131 |
| LINKAGE-QUICK ATTACH | 132 |
| LINKAGE-QUICK ATTACH | 133 |
| LINKAGE-QUICK ATTACH-DETAILS | 134 |

| | | |
|------------------------------------|-----|----|
| TABLE OF CONTENT | | 00 |
| SHEET METAL | 135 | |
| SIDE COVER-SHIELD FAN | 136 | |
| SHEET METAL | 137 | |
| SHEET METAL | 138 | |
| SHEET METAL | 139 | |
| SHEET METAL-CLADDING PLATFORM | 140 | |
| BALE EJECTOR KIT | 141 | |
| BALE EJECTOR KIT | 142 | |
| BALE EJECTOR KIT | 143 | |
| SUPPORTS PLATFORM | 144 | |
| SHEET METAL-CLADDING PLATFORM | 145 | |
| SHEET METAL-CHASSIS AND SUSPENSION | 146 | |
| FENDERS - FRONT-4 WHEEL DRIVE | 147 | |
| SEAT | 148 | |
| SEAT | 149 | |
| SEAT | 150 | |
| SEAT | 151 | |
| DRIVER SEAT | 152 | |
| TRACTOR CAB | 153 | |
| TRACTOR CAB-FRONT - WINDSCRENN | 154 | |
| TRACTOR CAB-LOWER FIXED COMPONENTS | 155 | |
| TRACTOR CAB | 156 | |
| TRACTOR CAB-REAR AND BRACKET | 157 | |
| TRACTOR CAB-LEFT SIDE - RIGHT SIDE | 158 | |
| TRACTOR CAB-OUTSIDE AND INTERNAL | 159 | |
| ROTATING LIGHT | 160 | |
| WEIGHT FRAME AND WEIGHTS W | 161 | |
| REAR HITCH | 162 | |
| REAR HOOK-STANDARD | 163 | |
| DRAWBAR-HEAVY DUTY | 164 | |
| TOOL KIT | 165 | |



MASSEY FERGUSON

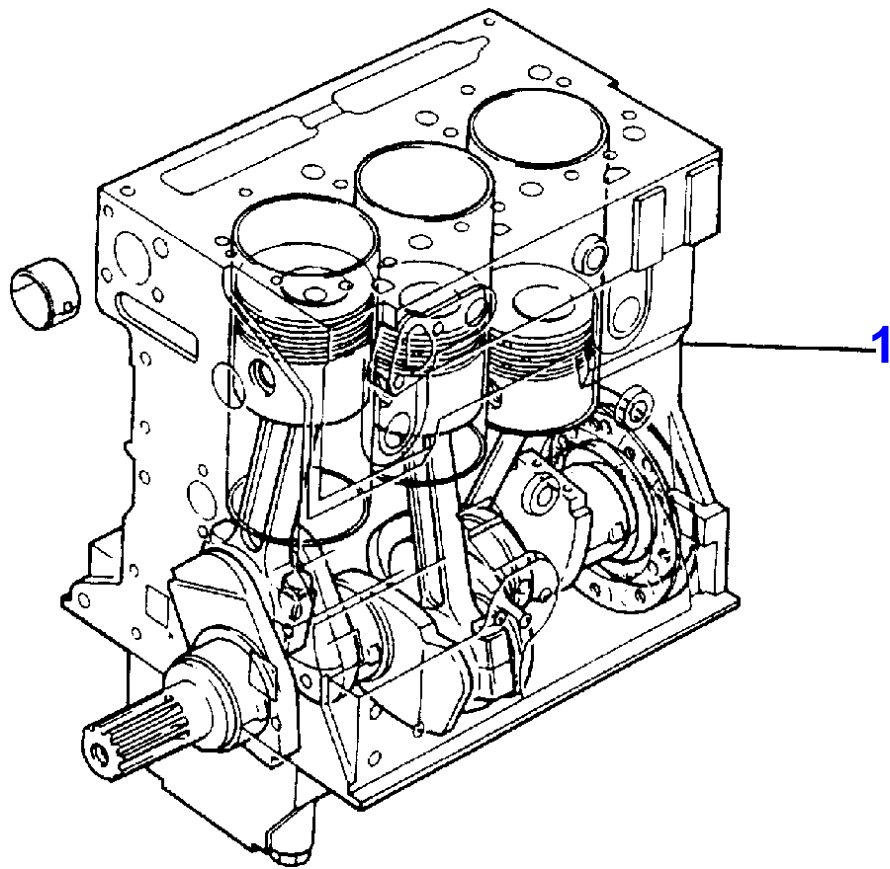
MF 354 SQ CAB TRACTOR - 3540964

3540964

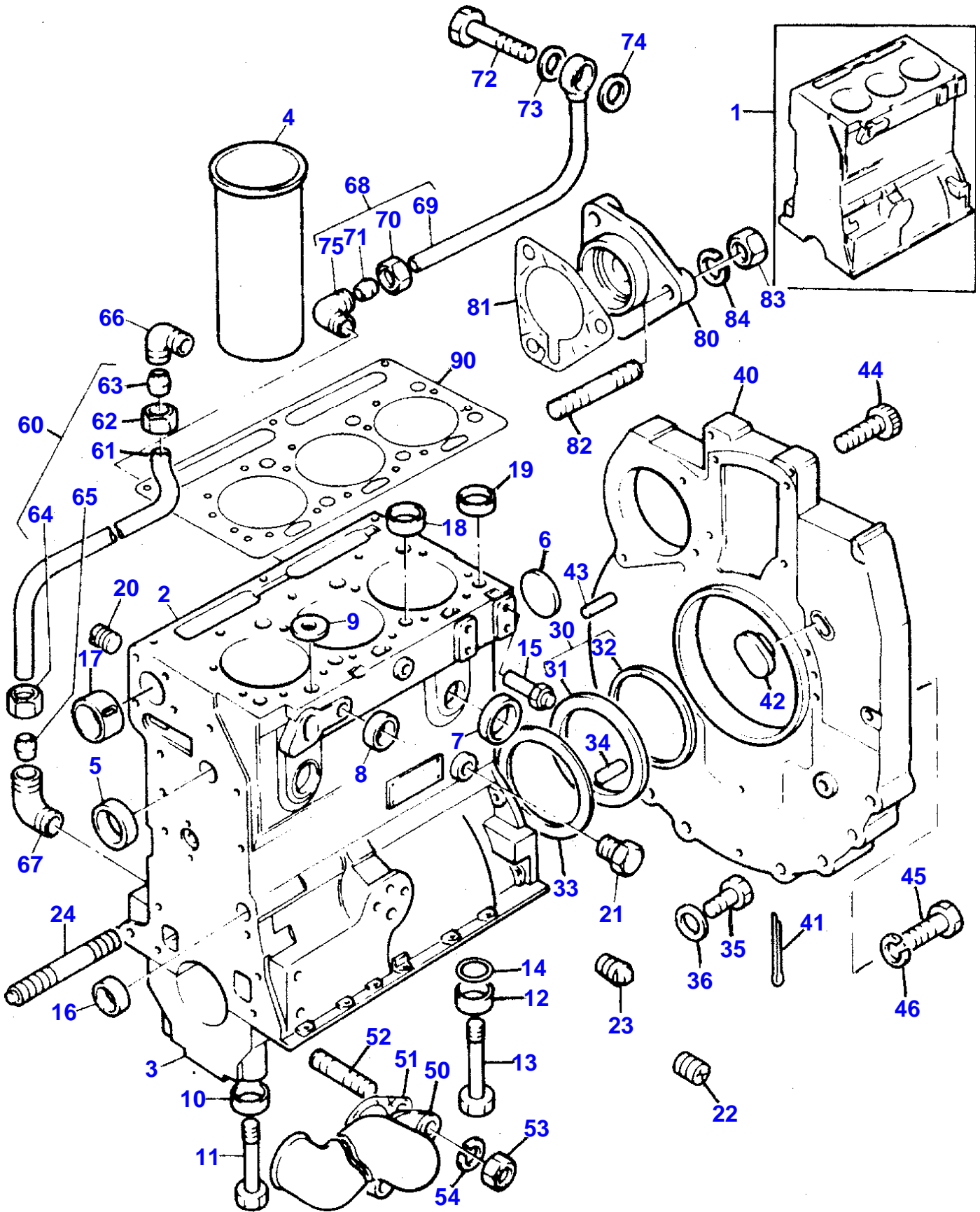
ENGINE ASSEMBLY-AD3.152 ENGINE

1

| Item | Part Number | Qty | Description | Comments |
|------|-------------|-----|-------------|-------------------------------|
| 1 | 3553118M91 | 1 | Engine | [A] "CE31197" |
| 1 | 3553128M91 | 1 | ENGINE | [B] "CE31212" |
| | | | | [A] STD.HYDRAULIC LINES |
| | | | | [B] SINGLE HYDRAULIC LINES |



| Item | Part Number | Qty | Description | Comments |
|------|-------------|-----|----------------|----------------------------|
| 1 | CE39124 | 1 | ENGINE | [A] "39116" |
| 2 | | 1 | CYLINDER BLOCK | [B] (1) |
| | | 3 | LINER | (1) |
| | | 1 | CRANKSHAFT | (1) |
| | | 2 | WEIGHT | (1) |
| | | 1 | BEARING | (1) |
| | | 3 | PISTON | (1) |
| | | 3 | SEGMENT | (1) |
| | | 3 | CONROD | (1) |
| | | 1 | BEARING | (1) |
| | | 4 | WASHER | (1) |
| | | 1 | SEAL | (1) |
| | | 1 | HOUSING | (1) |
| | | | | [A] LIP SEAL |
| | | | | [B] COMPLETE WITH PLUGS |

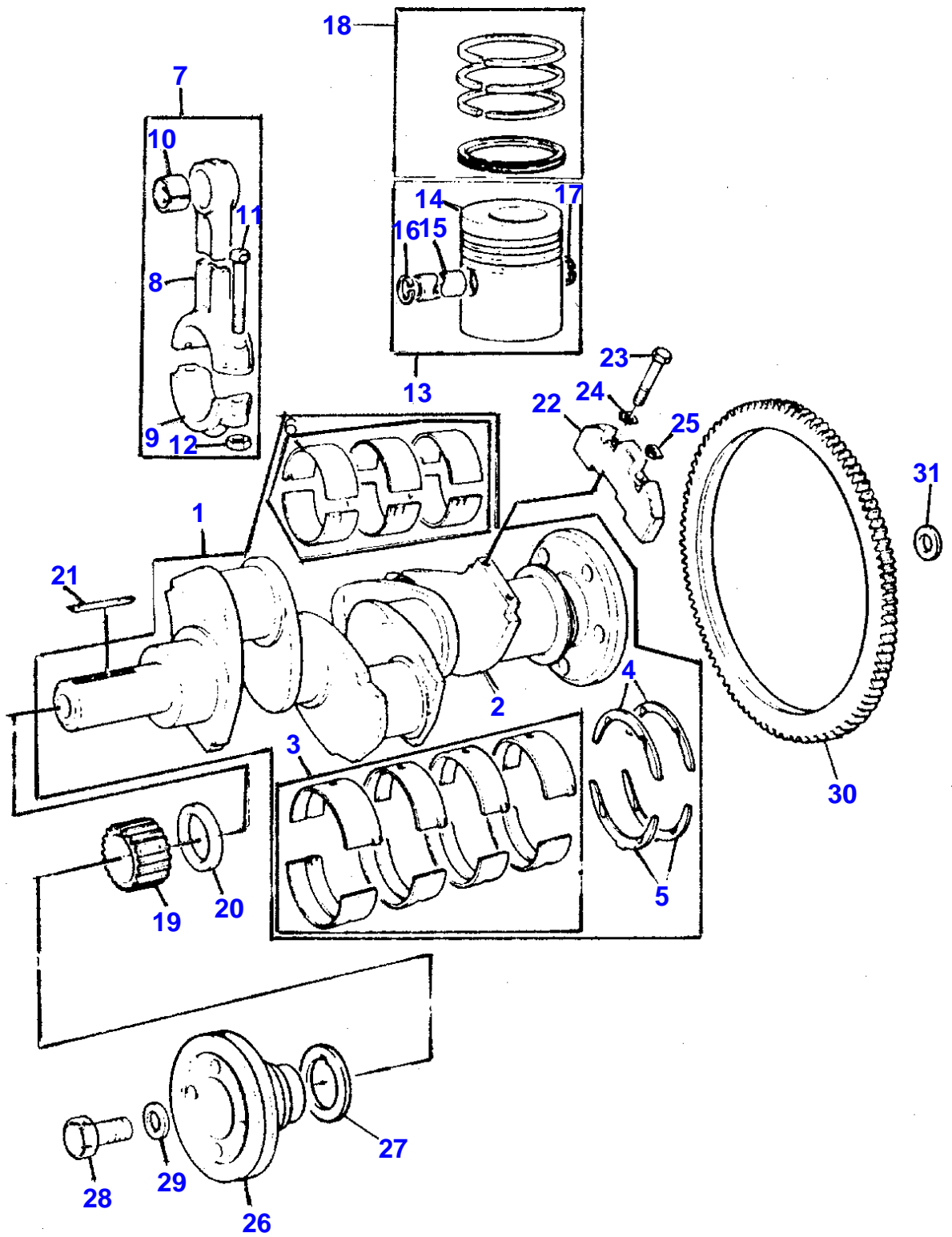


CYLINDER BLOCK-AD3.152 ENGINE

| Item | Part Number | Qty | Description | Comments |
|------|-------------|-----|-------------------|--|
| 1 | ZZ 50206 | 1 | BLOCK | |
| 2 | ZZ 50133 | 1 | BLOCK | Up to Serial or Engine Number |
| | | 1 | CYLINDER BLOCK | (1) |
| 3 | | 4 | SUPPORT | Not serviced, order REF.1 (1) |
| 4 | 31358323 | 3 | Liner | Not serviced, order REF.1 [A, X] (1) |
| 4 | 31358345 | X | Liner | . 3. 3. 6 [B] |
| | 31358357 | X | Liner | [B] Thickness (+) 0.76MM Thickness (+) 0.030 |
| 5 | 0650710 | 1 | Plug | (1) |
| 6 | 0650692 | 1 | Plug | (1) |
| 7 | 0650710 | 4 | Plug | (1) |
| 8 | 32417163 | 2 | Plug | (1) |
| 9 | 33141124 | 1 | Plug | (1) |
| 10 | 33137408 | 6 | Thimble | (1) |
| 11 | 32181441 | 6 | Screw | (1) |
| 12 | 33137408 | 2 | Thimble | (1) |
| 13 | 32181442 | 2 | Screw | (1) |
| 14 | 2415608 | 2 | O Ring | (1) |
| 15 | 2485A204 | 1 | Plug | (1) |
| 16 | 0650566 | 2 | Plug | (1) |
| 17 | 31134128 | 1 | Bush | (1) |
| 18 | 33157142 | 2 | Plug | (1) |
| 19 | 33157143 | 2 | Plug | (1) |
| 20 | 32114143 | 1 | Plug | (1) |
| 21 | 32161114 | 1 | Plug | (1) |
| 22 | 32114472 | 3 | Plug | (1) |
| 23 | 0650593 | 1 | Plug | (1) |
| 23 | 0650594 | 1 | Plug | Up to Serial or Engine Number U726816K |
| 24 | 32537404 | 1 | Stud | From Serial or Engine Number U726817K |
| 30 | 4142V002 | 1 | Housing | [X] . 1. 2. 8 |
| 31 | | 1 | HOUSING | (30) Not serviced, order REF.30 |
| 32 | 2418F475 | 1 | Seal | (30) |
| 33 | 33826115 | 1 | GASKET | [X] . 1. 2. 8 |
| 34 | 0350015 | 2 | Dowel | [X] . 1. 2. 8 |
| 35 | 2183205 | 9 | Screw | |
| 36 | 390972X1 | 9 | Washer Metric | |
| 40 | 37147975 | 1 | Plate | |
| 41 | 0610045 | 1 | Pin | |
| 42 | 37813113 | 1 | Plug | |
| 43 | 0350016 | 2 | Dowel | |
| 44 | 0720798 | 2 | Screw | |
| 45 | 0746454 | 6 | BOLT | |
| 46 | 0920054 | 6 | Washer | |
| 50 | 37736243 | 1 | UNION | [E] |
| 51 | 3686J003 | 1 | GASKET | [F] |
| | 3686J003 | 1 | GASKET | [G] |
| 52 | 2183205 | 2 | Screw | |
| 53 | 0576002 | 2 | Nut | |
| 54 | 0920053 | 2 | Washer | |
| 60 | 35352404 | 1 | Pipe,Oil | |
| 61 | | 1 | PIPE | (60) Not serviced, order REF.60 |
| 62 | 0576111 | 1 | Nut | (60) |
| 63 | 0566002 | 1 | Olive | (60) |
| 64 | 0576111 | 1 | Nut | (60) |
| 65 | 0566002 | 1 | Olive | (60) |
| 66 | 0201047 | 1 | Connection | |
| 67 | 0201047 | 1 | Connection | |
| 68 | 35568109 | 1 | Pipe,Oil | |
| 69 | | 1 | PIPE | (68) |

CYLINDER BLOCK-AD3.152 ENGINE

| Item | Part Number | Qty | Description | Comments |
|------|-------------|-----|---------------|--|
| | | | | Not serviced, order REF.68 |
| 70 | 0576111 | 1 | Nut | (68) |
| 71 | 0566002 | 1 | Olive | (68) |
| 72 | 0095350 | 1 | Bolt | |
| 73 | 2411118 | 1 | Washer | |
| 74 | 2411118 | 1 | Washer | |
| 75 | 0201047 | 1 | Connection | |
| 80 | 37556191 | 1 | Plate | |
| 81 | 36862605 | 1 | GASKET | |
| 82 | 2183205 | 3 | Screw | (80) |
| 83 | 390972X1 | 3 | Washer Metric | |
| 90 | 3681E024 | 1 | GASKET | [X] 00.001.004.016 |
| | | | | [A] PRESS FIT |
| | | | | [B] SLIP FIT |
| | | | | [E] WAS 37736242 USE 37736243 WITH 3686J002 |
| | | | | [F] USED ONLY WITH 37736242 |
| | | | | [G] USED ONLY WITH 37736243 |
| | | | | [X] QTY PER TRACTORS SOLD (AA.BBB.CCC.DDD) (AA) FOR ,(BBB) 2-10 (CCC) 11-25 (D DD) 26-50 |



CRANKSHAFT, PISTONS AND CONNECTING RODS-AD3.152 ENGINE

| Item | Part Number | Qty | Description | Comments |
|------|-------------|-----|------------------|--|
| 1 | ZZ90150 | 1 | CRANKSHAFT | |
| 2 | | 1 | SHAFT | (1) Not serviced, order REF.1 |
| 3 | 68084 | X | Kit, Bearing | [A] (1) |
| | 68084A | 1 | Kit, Bearing | [A, X] Thickness (-)0.25MM Thickness (-)0.010 . 1. 2. 3 |
| 3 | 68084B | X | Kit, Bearing | [A] Thickness (-)0.50MM Thickness (-)0.020 |
| 3 | 68084C | X | Kit, Bearing | [A] Thickness (-)0.75MM Thickness (-)0.030 |
| 4 | 31137211 | 2 | Thrust Washer | (1) |
| | 31137212 | 1 | Washer | [X] Thickness (+)0.19MM Thickness (+)0.0075 . 1. 2. 3 |
| 5 | 31137221 | 2 | Thrust Washer | (1) |
| | 31137222 | 1 | Washer | [X] Thickness (+)0.19MM Thickness (+)0.0075 . 1. 2. 3 |
| 6 | 85036 | 1 | Kit, Bearing | [A] (1) |
| | 85036A | 1 | Kit, Bearing | [A, X] Thickness (-)0.25MM Thickness (-)0.010 . 1. 2. 3 |
| 6 | 85036B | X | Kit, Bearing | [A] Thickness (-)0.50MM Thickness (-)0.020 |
| 6 | 85036C | X | Kit, Bearing | [A] Thickness (-)0.75MM Thickness (-)0.030 |
| 7 | ZZ90010 | 1 | Kit, Conrod | [X] . 3. 6. 18 |
| 8 | | 1 | CONROD | (7) Not serviced, order REF.7 |
| 9 | | 1 | SUPPORT | (7) Not serviced, order REF.7 |
| 10 | 31134151 | 1 | Bush | (7) |
| 11 | 0095250 | 2 | Bolt | (7) |
| 12 | 33221327 | 2 | Nut | (7) |
| 13 | 68302 | 3 | Kit, Piston | [B] |
| | 89214 | 3 | Kit, Piston | [C, X] 00.003.006.018 |
| 14 | | 1 | PISTON | (13) Not serviced, order REF.13 |
| 15 | | 1 | PIN | (13) Not serviced, order REF.13 |
| 16 | 0170001 | 1 | Circlip | (13) |
| 17 | 0170001 | 1 | Circlip | (13) |
| 18 | 41158065 | 3 | Kit, Piston Ring | [X] . 3. 6. 18 |
| 19 | 31163495 | 1 | GEAR | [X] Number of teeth/spines 25 . 1. 2. 3 |
| 20 | 33125151 | 1 | SPACER | |
| 21 | 36271704 | 1 | Woodruff Key | |
| 22 | 31328242 | 2 | Weight | [D] |
| 23 | 2185189 | 4 | Screw | |
| 24 | 31731515 | 2 | Washer | |
| 25 | 31731516 | 2 | Washer | |
| 26 | 31147788 | 1 | PULLEY | |
| 27 | 33176137 | 1 | Washer | |
| 28 | 32162331 | 1 | Screw | |
| 29 | 33125112 | 1 | Washer | |
| 30 | 3552228M1 | 1 | CROWNWHEEL | Number of teeth/spines 115 |
| 31 | 33117127 | 6 | Washer | |

MASSEY FERGUSON

MF 354 SQ CAB TRACTOR - 3540964

3540964

CRANKSHAFT, PISTONS AND CONNECTING RODS-AD3.152 ENGINE

4

| Item | Part Number | Qty | Description | Comments |
|------|-------------|-----|-------------|--------------------|
| 32 | 31137235 | 1 | WASHER | (1) |
| 32 | 31137236 | X | WASHER | Thickness (+)0.007 |
| 33 | 31137245 | 1 | WASHER | (1) |
| 33 | 31137246 | X | WASHER | Thickness (+)0.007 |

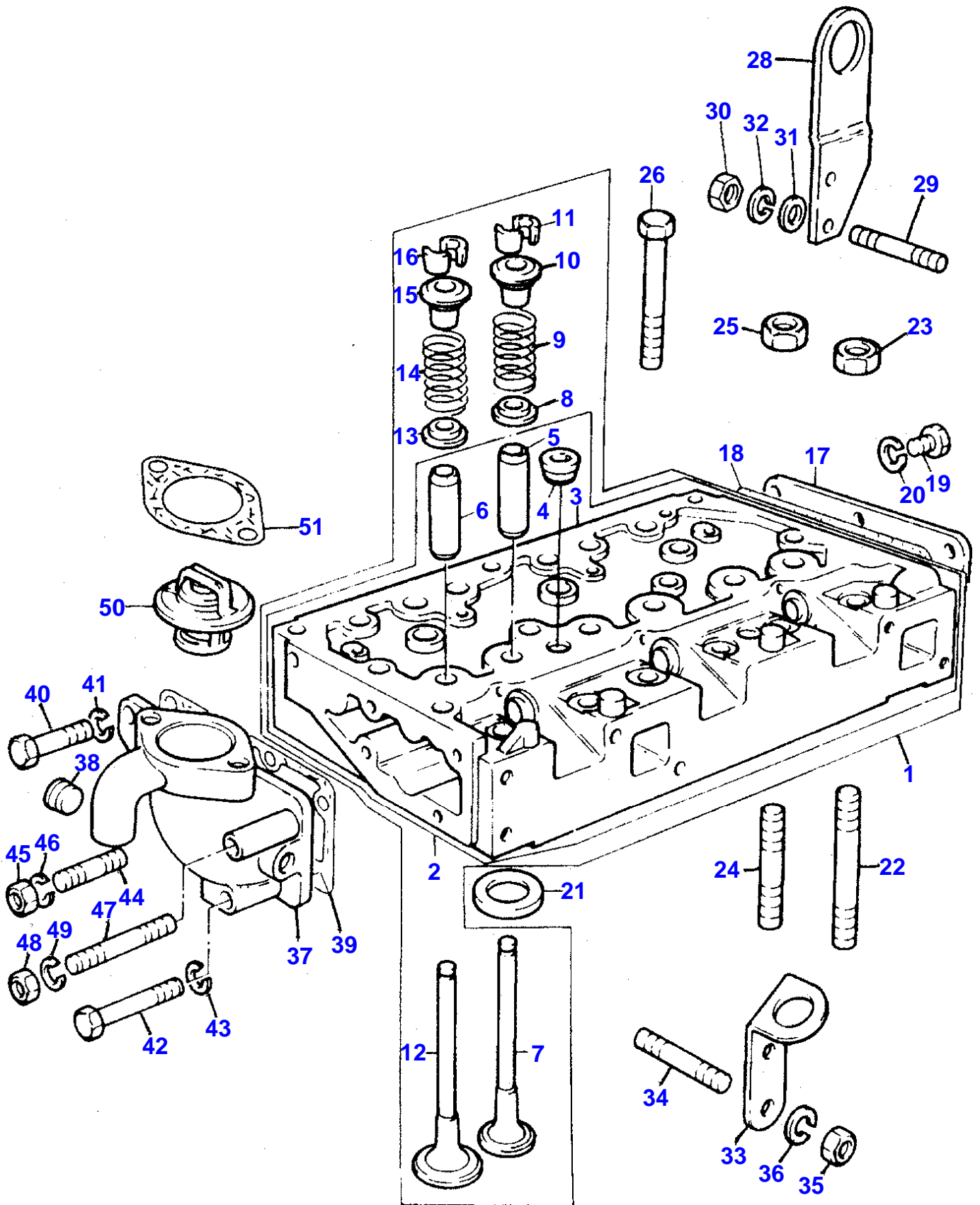
[A]
PRE-FINISHED

[B]
UNTOPPED

[C]
PRE-TOPPED

[D]
REPLACES 31328241 IN ENGINE SETS ONLY(QTY 2).

[X]
QTY PER TRACTORS SOLD (AA.BBB.CCC.DDD) (AA) FOR ,(BBB) 2-10 (CCC)
11-25 (D DD) 26-50



Buy Now



Our support email:

ebooklibonline@outlook.com