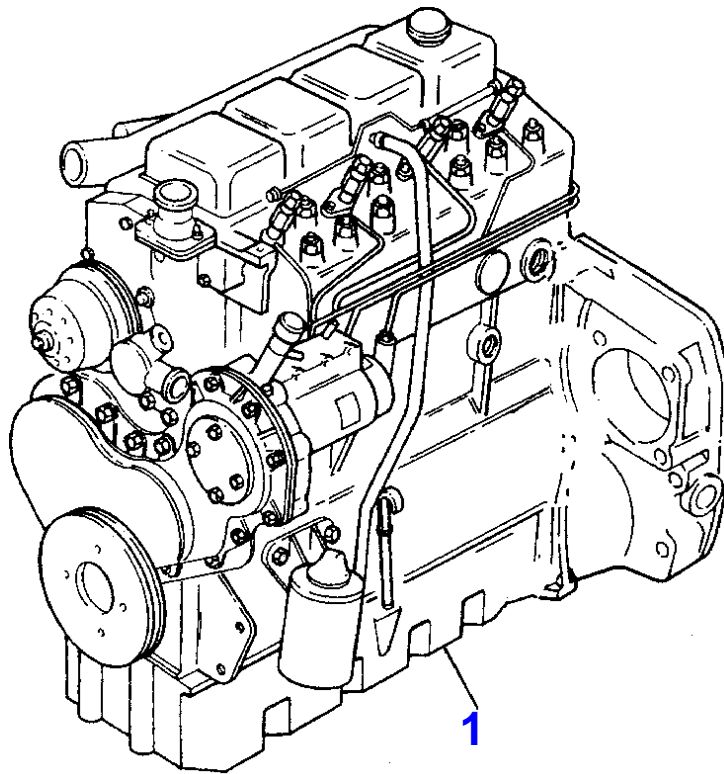


Page Title	Page Number
ENGINE ASSEMBLY - "1004-42"GREEN ENGINE	010-0001
SHORT ENGINE - "1004-42"GREEN ENGINE	010-0002
CYLINDER BLOCK - PLATE F - "1004-42"GREEN ENGINE	010-0003
CRANKSHAFT,PISTONS AND CONNECTING RODS - PLATE B - "10 - 04-42"GREEN ENGINE	010-0004
CYLINDER HEAD - PLATE C - "1004-42"GREEN ENGINE	010-0005
ROCKER SHAFT - PLATE A - "1004-42"GREEN ENGINE	010-0006
TIMING GEAR AND CAMSHAFT - PLATE B - "1004-42"GREEN EN - GINE	010-0007
BALANCER UNIT - PLATE A - "1004-42"GREEN ENGINE	010-0008
FUEL INJECTION EQUIPMENT (DIESEL) - PLATE A - "1004-42 - "GREEN ENGINE	010-0009
LUBRICATING OIL SUMP - PLATE D - "1004-42"GREEN ENGINE	010-0010
LUBRICATING OIL FILLER AND BREATHER - PLATE E - "1004- - 42"GREEN ENGINE	010-0011
HEAT EXCHANGER AND LUBRICATING OIL FILTER - PLATE Q - - "1004-42"GREEN ENGINE	010-0012
WATER PUMP,THERMOSTAT AND HEAT EXCHANGER - PLATE C - " - 1004-42"GREEN ENGINE	010-0013
WATER PUMP,THERMOSTAT AND HEAT EXCHANGER - PLATE E - " - 1004-42"GREEN ENGINE	010-0014
FAN AND EXTENSION - PLATE A - "1004-42"GREEN ENGINE	010-0015
GEAR DRIVE AUXILIARY DRIVE OPTIONS - PLATE A - "1004-4 - 2"GREEN ENGINE	010-0016
INDUCTION MANIFOLD - PLATE H - "1004-42"GREEN ENGINE	010-0017
EXHAUST MANIFOLD - PLATE D - "1004-42"GREEN ENGINE	010-0018
LOW PRESSURE FUEL SYSTEM - PLATE W - "1004-42"GREEN EN - GINE	010-0019
HEATER/STARTER SWITCH - PLATE B - "1004-42"GREEN EN - E	010-0020
FUEL STYSTEM - PLATE A - "1004-42"GREEN ENGINE	010-0021
JOINTS AND GASKETS-TOP SERVICE KIT - PLATE C - "1004-4 - 2"GREEN ENGINE	010-0022
JOINTS AND GASKETS-BOTTOM SERVICE KIT - PLATE C - "100 - 4-42"GREEN ENGINE	010-0023



Massey Ferguson

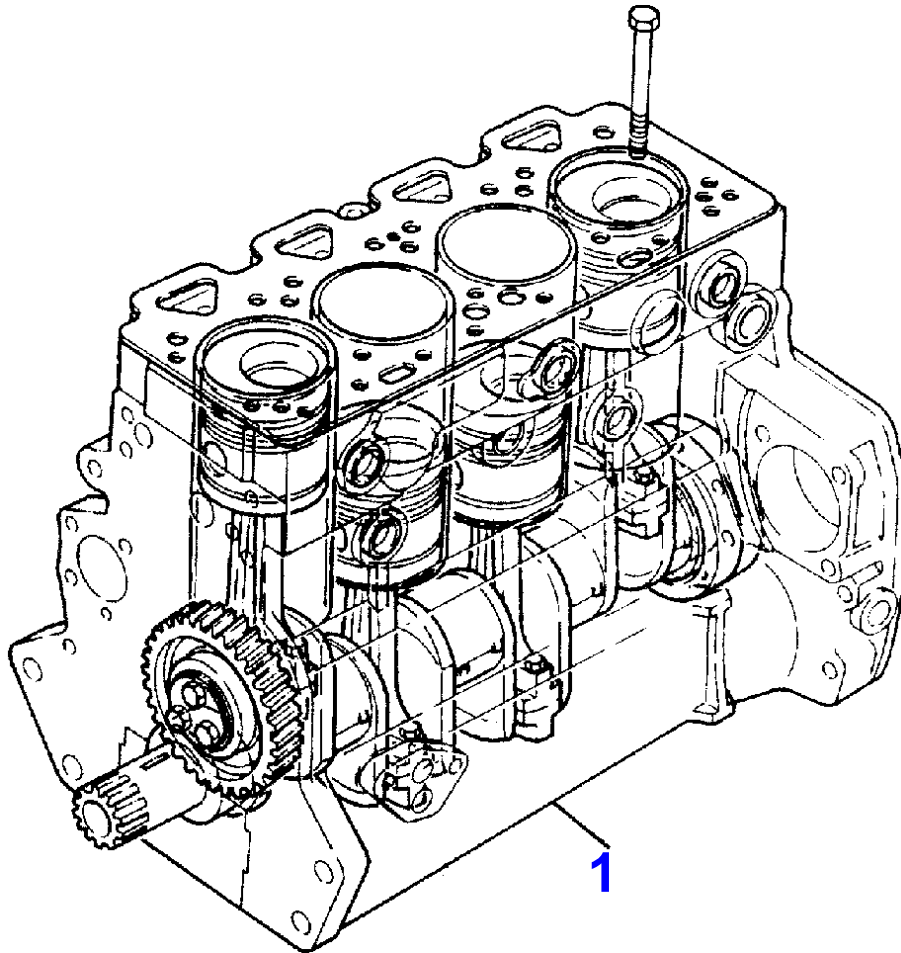
MF 3340 C-FL CRAWLER-TYPE TRACTOR - 3670138

3670138

ENGINE ASSEMBLY - "1004-42"GREEN ENGINE

Page010-0001

Item	Part Number	Qty	Description	Comments
1	3649723M92	1	ENGINE	AS81011



Massey Ferguson

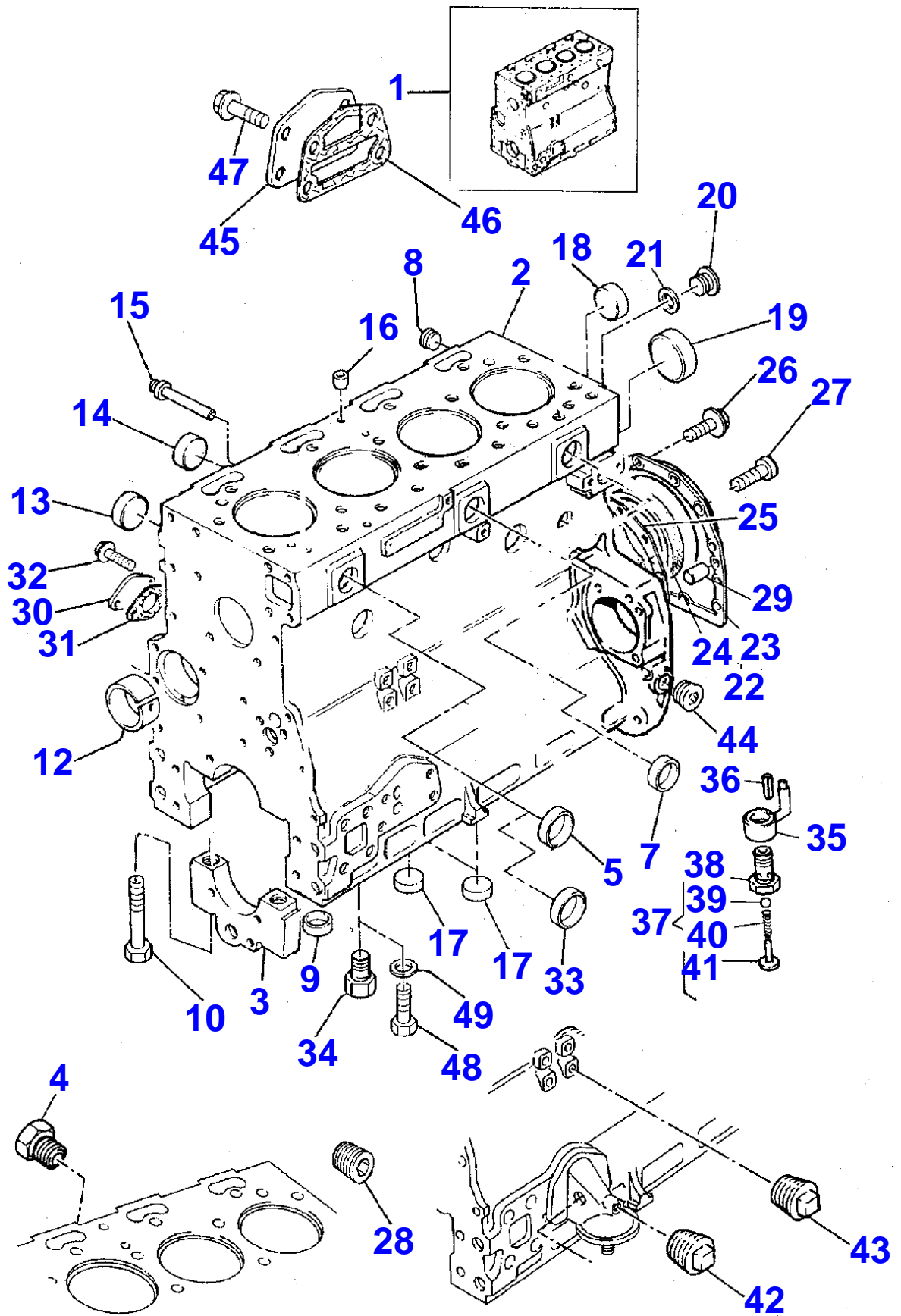
MF 3340 C-FL CRAWLER-TYPE TRACTOR - 3670138

3670138

SHORT ENGINE - "1004-42"GREEN ENGINE

Page010-0002

Item	Part Number	Qty	Description	Comments
1	AR39773	1	SHORT ENGINE	AR39790 (1)



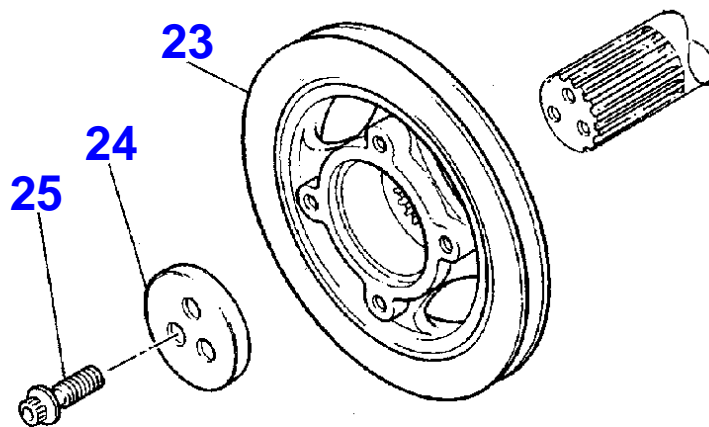
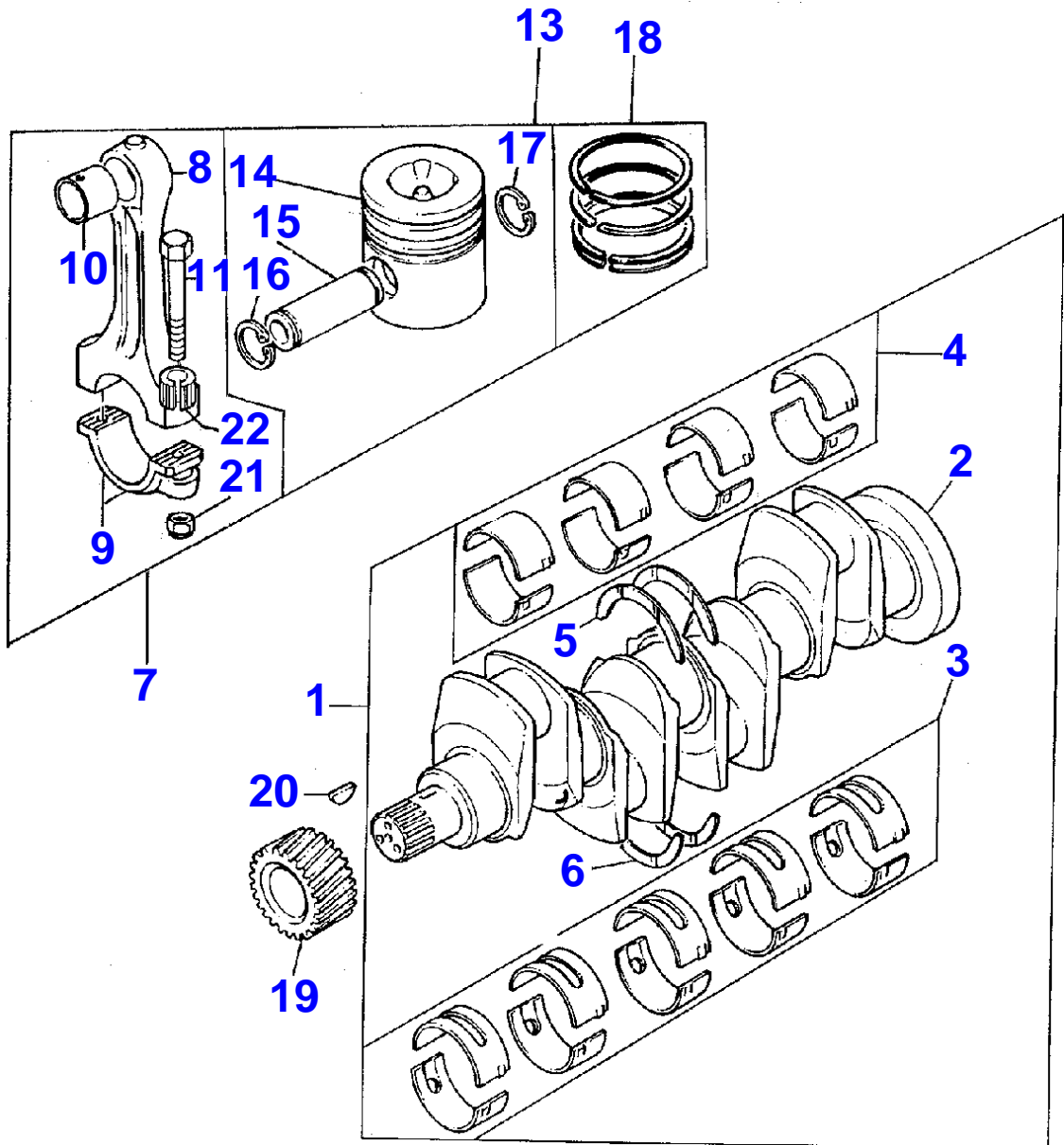
Item	Part Number	Qty	Description	Comments
1	ZZ50281	1	CYLINDER BLOCK	ZZ50300 (1)
2		1	BLOCK	REF.N.1 1
3		5	CAP	REF.N.1 1
4	32161114	1	PLUG	
5	0650710	5	PLUG	[C] 1
7	0650710	1	PLUG	[E] 1
8	0650588	2	PLUG	[C,D] 1
9	33142111	10	MANICOTT	1
10	32166329	10	SCREW	1
12	31134165	1	BUSH	1
13	32418122	4	PLUG	[D] 1
14	32416118	4	PLUG	[F] 1
15	2485A204	1	PLUG	[G] 1
16	32417134	1	PLUG	[H] 1
17	32161114	1	PLUG	[A] 1
18	32418122	2	PLUG	[J] 1
19	32416119	1	PLUG	[M] 1
20	0650582	1	PLUG	[N] 1
21	3311R003	1	WASHER	[N] 1
22	2418F701	1	SEAL	2415D108 (1) U176357H
	4142V066	1	FLANGE	U176356H
23		1	COVER	REF.N.22 22 U176356H
24	2418F475	1	SEAL	22 U176356H
25	3681T018	1	SEAL	
26	2314H003	12	SCREW	
27	3212V002	2	SCREW	
28	2431154	3	PLUG	[B]
29	0350009	2	DOWEL	
30	36171131	1	PLATE	1
31	36832144	1	GASKET	1
32	2314H032	2	SCREW	1
33	3314A103	1	PLUG	1
34	2487001	4	PLUG	1
35	3861A027	1	JET	1 NO. 1 CYLINDER
36	2116A022	1	DOWEL	35
37	4138A017	1	VALVE	1 NO. 1 CYLINDER
38		1	BODY	REF.N.37 37
39	2538753	1	BALL	37
40	3174A004	1	SPRING	37
41	3271A003	1	RETAINER	37
42	0650594	1	PLUG	
43	0650594	1	PLUG	
44	0650588	1	PLUG	1
45	3623H008	1	PLATE	1
46	3686T006	1	SEAL	1
47	2314J033	4	SCREW	1
48	2182110	3	SCREW	1
49	376616X1	3	SPACER	1

FOOTNOTE [A] CYLINDER BLOCK WATER DRAIN LEFT HAND SIDE

FOOTNOTE [B] APPLICATION MISCELLANEOUS AND AUXILIARIES

Item	Part Number	Qty	Description	Comments
FOOTNOTE	[C]		WATER JACKET LEFT HAND SIDE	
FOOTNOTE	[D]		WATER JACKET, RIGHT HAND SIDE	
FOOTNOTE	[E]		WATER JACKET LEFT HAND SIDE TOP CENTRE HOLE	
FOOTNOTE	[F]		TAPPED CHAMBER .	
FOOTNOTE	[G]		ROCKER OIL FEED DRILLING, RIGHT HAND SIDE .	
FOOTNOTE	[H]		ROCKER OIL FEED DRILLING, TOP FACE .	
FOOTNOTE	[J]		WATER JACKET, REAR FACE	
FOOTNOTE	[M]		CAMSHAFT CHAMBER, REAR END .	
FOOTNOTE	[N]		LUBRICATING OIL PRESSURE RAIL, REAR END	

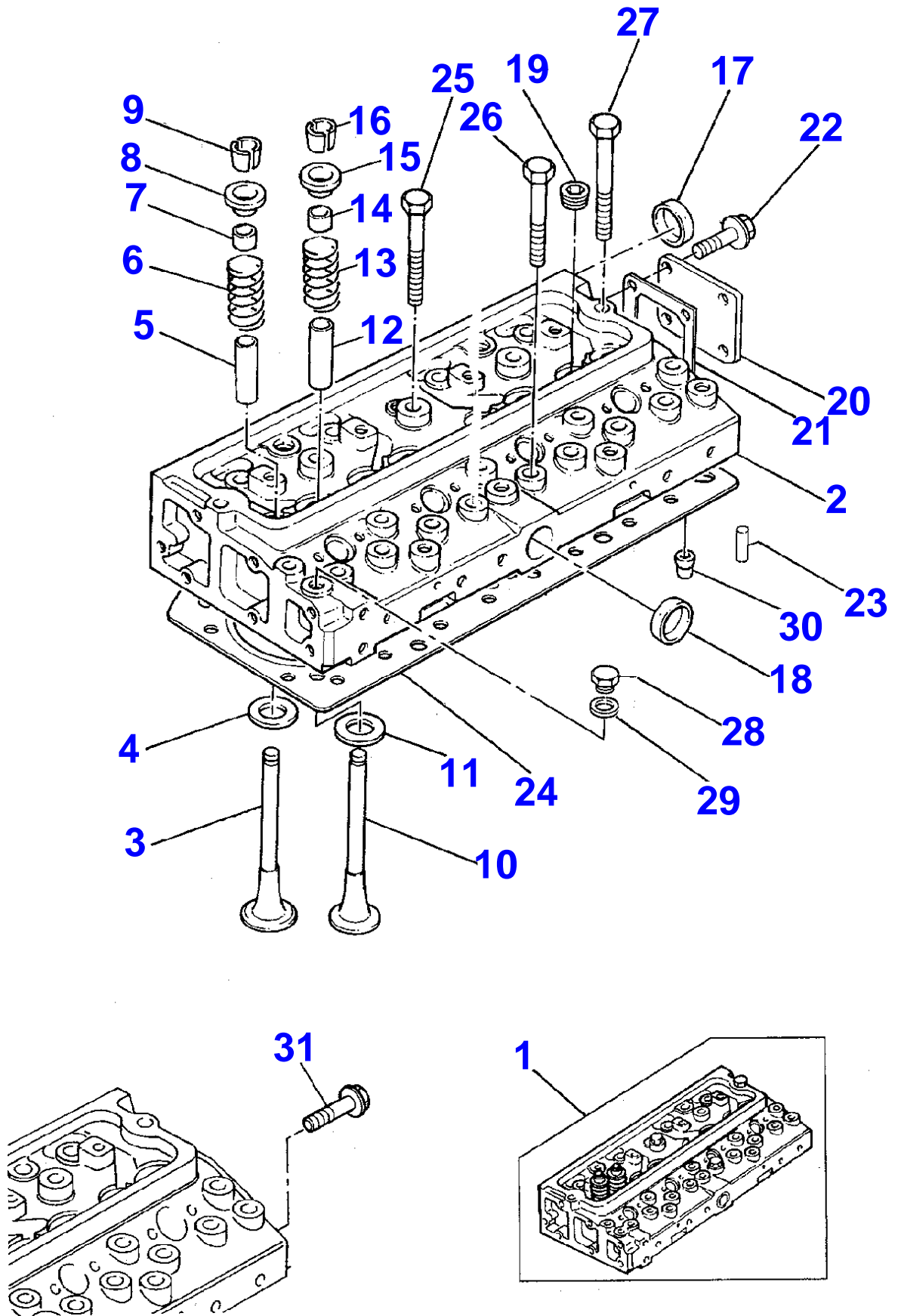




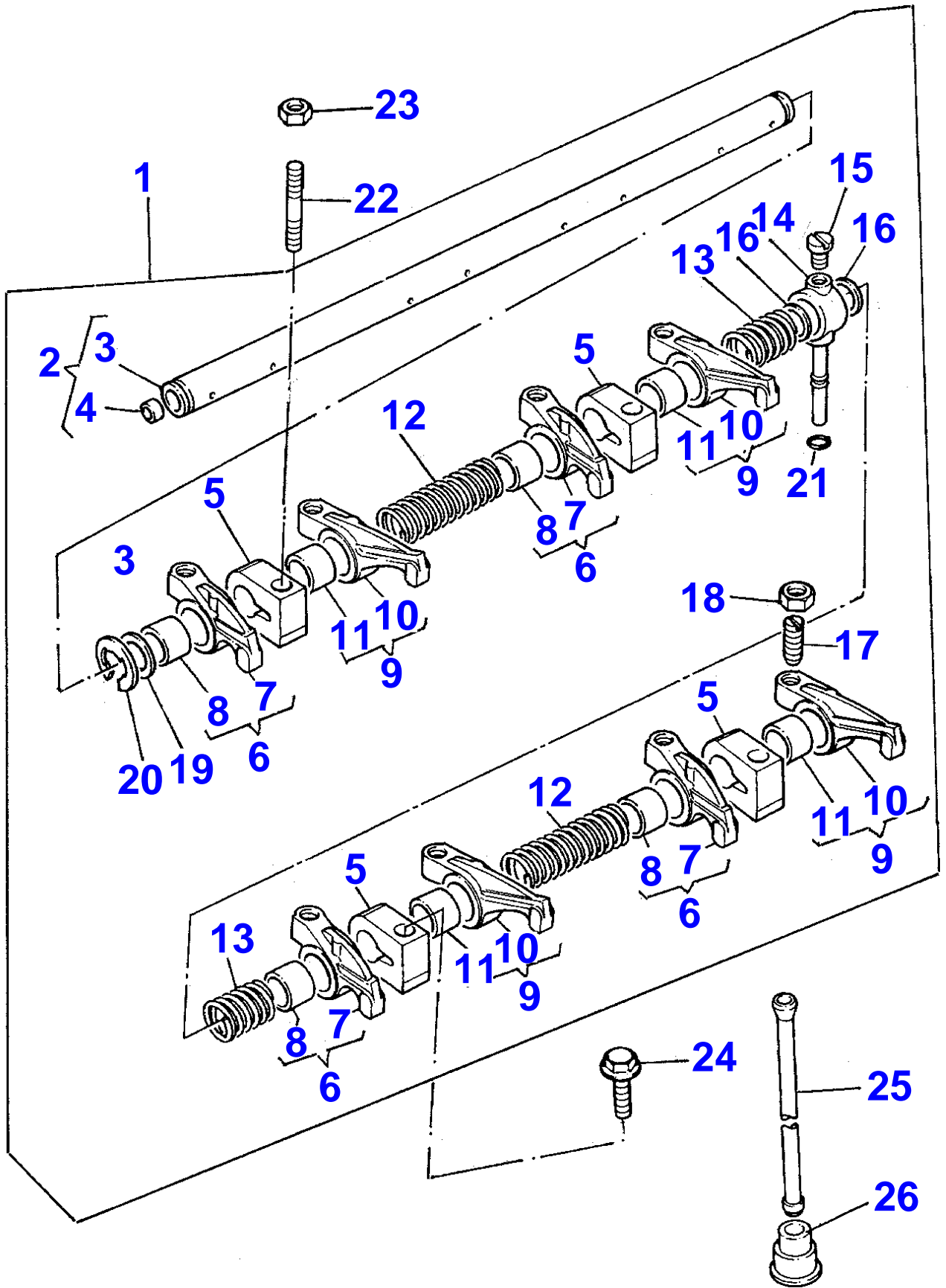
Item	Part Number	Qty	Description	Comments
1	ZZ90202	1	SHAFT	
2		1	SHAFT	REF.N.1 1
3	81558	1	BEARING	[A] 1
	81558A	999	BEARING	[A] (-)0,25MM
	81558B	999	BEARING	[A] (-)0,50MM
	81558C	999	BEARING	[A] (-)0,75MM
4	U5ME0006	1	KIT	[A] 1
	U5ME0006A	999	CUSCINET	[A] (-)0,25MM
	U5ME0006B	999	KIT	[A] (-)0,50MM
	U5ME0006C	999	CUSCINET	[A] (-)0,75MM
5	31137312	999	RING	(+)0,19MM
	31137551	2	WASHER	1
6	31137322	999	RING	(+)0,19MM
	31137561	2	WASHER	1
7	ZZ90188	4	KIT	[C] HIGH GRADE 4115C334 (1)
	ZZ90189	4	KIT	[C] INT.GRADE 4115C335 (1)
	ZZ90190	4	KIT	[C] INT.GRADE
	ZZ90191	4	KIT	[C] LOW.GRADE
8		1	CONROD	REF.N.7 7
9		1	CAP	REF.N.7 7
10	3112E011	1	CUSHION	[C] 7
11	32762145	2	SCREW	7
13	U5LP0058	4	KIT	STD.
	U5LP0058B	4	KIT	0,5MM
	U5LP0058D	4	KIT	1,0MM
14		1	PISTON	REF.N.13 13
15		1	PIN	REF.N.13 13
16	2721332	1	RING	13
17	2721332	1	RING	13
18	U4181A045	4	KIT	STD.
	U4181A046	4	KIT	0,5MM
	U4181A047	4	KIT	1,0MM
19	31171681	1	GEAR	
20	0500012	1	KEY	
21	33221328	2	NUT	7
22	2135A001	2	THIMBLE	7
23	3114V012	1	PULLEY	
24	3242T001	1	RING	
25	32186139	3	SCREW	

FOOTNOTE [A] ENDED

FOOTNOTE [C] SEE PERKINS SERVICE BULLETIN N.81



Item	Part Number	Qty	Description	Comments
1	ZZ80256	1	CYLINDER HEAD	
2		1	CYLINDER HEAD	REF.N.1
				1
3	3142H041	4	VALVE	1
4	3314A101	4	INSERT	1
5	3313A012	4	INSERT	1
6	3174P412	4	SPRING	1
7	2418M507	4	SEAL	1
8	3342N011	4	CAP	1
9	3142W004	8	COTTER	1
10	3142D061	4	VALVE	1
11	3314A102	4	INSERT	1
12	3318A705	4	GUIDE	1
13	3174P412	4	SPRING	1
14	2418M505	4	SEAL	1
				EXHAUST
15	3342N011	4	CAP	1
16	3142W004	8	COTTER	1
17	32418122	1	PLUG	1
18	0650710	1	PLUG	1
19	2431A054	4	PLUG	1
				0650586 (1)
20		1	COVER	A-01 14
21		1	GASKET	A-01 14 11
22		4	SCREW	A-01 14 18
23	U3244A009	2	DOWEL	3244A009 (1)
24	3681E042	1	GASKET	
25	3218J303	8	SCREW	
26	3218J606	12	SCREW	
27	3218J607	2	SCREW	
28	0650203	1	PLUG	1
29	2411157	1	WASHER	1
30	29990001	2	DOWEL	1
31	2314H002	3	SCREW	



Item	Part Number	Qty	Description	Comments
1	ZZ90171	1	AXLE	
2	ZZ90172	1	AXLE	1
3		1	SHAFT	REF.N.2 2
4	0650507	2	PLUG	2
5	3818X901	4	POPPET	1
6	4115R005	4	LEVER	1 4115R007 (1)
7		1	LEVER	REF.N.6 6
8	31134166	1	BUSH	6 3112A003 (1)
9	4115R006	4	LEVER	1 4115R008 (1)
10		1	LEVER	REF.N.9 9
11	31134166	1	BUSH	9 3112A003 (1)
12	31744123	2	SPRING	1
13	31743108	2	SPRING	1
14	3775E012	1	UNION	1
15	2233022	1	SCREW	1
16	33117426	2	SHIM	1 3311K015 (1)
17	32114145	8	SCREW	1
18	0576052	8	NUT	1
19	3311K012	2	WASHER	1
20	0170151	2	RING	1
21	376525X1	1	SPINNER	1
22	2313H331	3	STUD	
23	2318A605	3	NUT	
24	2314J607	1	SCREW	
25	31434307	8	ROD	
26	3142U031	8	TAPPET	3142U991 (1)

**Buy Now**



Our support email:

[ebooklibonline@outlook.com](mailto:ebooklibonline@outlook.com)